

OMUKWETU





Omayooloko gokupanga momagumbo nomoshipangelo

Ei oyange mwene

Mokudiladila oulinawa womunhu, ohandi koneke eembinga dopavali - fiku handi hakulwa nda teka, nda tuwa, handi vele omutwe, ombuda, onhulo, ei ndishi oinima itai dulu okukelelwa noupu?

Ndelenee ongahelipi ngenge handi hakulwa oupuka eshi handi nu omeva inaa fuluka, handi vele medimo alushe, molwoikulya handi i teleke nouhefi, oT. B. itai veluka nande, omolwokunwa oikolwifa. Omona wange ta kukuta alushe, eshi ha li oikulya italala ile ta koshwa nomeva matalala pefimbo lii ndishi aishe ei oi li kombinga yange mwene ngashi handi li tonatele mwene?

Omikifi yo ngashi dimwe hadi nyonauna oidalelo nokuxulika oiwana, ndishi ohadi etwa yo omafimbo amwe kouhasha wokuwapeka olutu nomadiladilo? Ovanamambo ove fike peni mbela moshiwana shetu ovo hava twala oimaliwa yavo koihakulilo efiku keshe omolwoinima ya tya ngaha?

Okutema omulilo ashike nokufulukifa omeva u nwe, ndishi oshipu shi dule okukufa ofilinga keshe efiku u ka hakulwe oupuka. Ofewa yofilinga imwe mofitola u likoshe olutu alushe, ndishi ombibiliha shi dule okutwala ofilinga kovenda yefiku keshe moule woivike ivali ile itatu? Pamwe hatu kwatelele mo yo ouhaku woshiponga shoshihauto inashi shingwa noshisho, oipute yomunhu a dengwa ile a tuwa eshi ta shindi ovanhu, ile eenghwengu douvela womatimba inaa hepaululwa.

Hano tete natu itavele, kutya oshihakulilo hasho onhele yotete yokulikelela omikifi detu, nde okutu kwafa kwaasho she tu nyenge momambo etu, ile momikunda detu.

Onkulundunge kombinga yeitaalo okwiitaala omavu oya talwa ya yooloka kokule meitaalodhiladhilo lyopauongononi wuunamiti woshinanena. linenenima iyali meitaalo lyoshipagani oyo okugalikana oombepo dhaasi nokutila uumpulile.

Oompango niidhila yoshipagani ya kwatelelwa mo, oya tungu ngaaka eitaalo lya kola tali uvanekele aantu mboka ye li itaala ekwatho mokukalamwenyo kwesiku kehe. Omolwasho aantu oya tala kutya oombepo dhaakuluyonale otadhi ningitha evi etoye, ewanawa, uundjolowele wolutu niikwawo ya fa mbyoka. Komeho gaayihe aakwanezimo yanakusa ye na okwiitha koompango dhaasi nokuvulika kudho mokutsakanitha ehalo lyaowo, opo ya pewa aniwa elago nuwanawa kuyo.

Momimvomathele 19 eitaalo ndika olya tameke okutelagana momadhiladhilo goyendji yomiigwana yOwambokavango wo. Nonando okugalikana aathithi kwa fa ngaa kwa si miigwana mbika, onkene ngaa eitaalo nuunganga wo wene inau ethiwa nando; onkene ngaa wa kala u na oonkondo momadhiladhilo gaantu. Inaa itaala nando kutya uuvu tashi vulika u holoke pwaa na ngoka e u eta nenge pamwe omolwombuto yasha, aawe, oya tala nokwiitaala kutya aathithi nenge aalodhi oyo ya eta aluhe omavu neso. Ihe ngele ya nyengwa okumona ngoka ta talwa oye omweeti guuvu, nena kwa dhiladhilwa kutya Kalunga Oye ngaa a eta uuvu, onkene omuvu ngoka inashi vulika we a kwathwe nomukalo gwontumba.

Eitaalo lyuumpulile olya kwatathanithwa nomavu, eso nomavalo gaanona ga gamekwa meitaalo lyoshipagani moka mu udha umbanda tau zi moompango dha pingathana noshu tuu miidhila. Ihe ngele inapu monika ekwatho lyasha nonando oompango nomalombwelo ga tsakanithwa nawa, nena aantu ya matukile natango koonganga dhoshipagani ndhoka kwa li hadhi gandja omayambo koombepo dhaasi noompulile, nenge okugandja iigwanga komuvu. Osho sha kala noshili sigo onena oonganga odhi na oonkondo dhasha ndhoka hadhi tidhitha nadho uuvu maantu.

Aatumwa yotango sho ya thiki kOwambo 1870, omadhiladhilo goshipagani mombinga yuunamiti oga vundakana mumwe nomadhiladhilo gopashingolo muunamiti.

lilonga yuunamiti sho ya taandele, omiti dhoshinanena odhe ya wo melongitho momimvomathele 20, unene tuu pethimbo lyomutumwa B. Pettinen ngoka iilonga ye wo ya yalulwa yi na esindano. Kombinga yomiyalu dhaavu ya pangwa momimvomathele dha ka pita ope na owala ontseyo onshona.

Omutumwa Omundowishi omusamane Hugo Hahn sho a hiya Aasoomi ya tameke oshilongatumo mOwambo, okwa li wo a tengeneke onkalo yomavu mOwambo na okwa li wo a gandja onduge yuunamiti tayi pumbiwa. Omolwasho aatumwa yotango oya kala ye na owino mombinga yuupangi; onkene oya vulu okukwatha; ano ya uvitha evangeli noya panga omalutu.

Omwaaludhi gwotango maatumwa Aasoomi a tseyika oye K. L. Tolonen, ngoka a li wo a sindi einekelo lyaShikongo Shakalulu,

omukwaniilwa gwaNdonga, nepango lye lyopanamiti dhoshingolo. Aatumwa Aasoomi yalwe ngashi T. Reijonen, G. Skoglund na M. Rautanen oya longo ongaandohotola ya Kambonde, omulanduli gwaShikongo.

Omolwokugandja ekwatho lyomiti, ndyoka lya dhimbululwa, aatumwahongi mbeyaka oya mono ompito okwiimonena ookuume maanenentu: nuukuume mbuka wa kolo ethimbo nethimbo. Omukwaniilwa sho kwi inekele aatumwahongi, nena osha vulika wo nuupu aapangelwa ye ya pangwe nuupu. Nonando ontseyo mombinga yuunamiti maatumwahongi ya li mo onshona, onkene tuu okupanga kwawo sho kwa li taku kwatha aantu, naamboka wo ya pangwa koonganga dhoshipagani sho ye ya ya konge ekwatho kaahongi, oya pangwa noya aluka shili, okupanga kwaatumwa oye ku simanekelwa shili noonkondo. Uunganga woshipagani wa dhinika ihe okuza uuna lumwe sho onganga ya li ya panga omuvu nosho ya nyengwa okwaaludha omupangwa gwayo gumwe oye ya komuhongi T. Reijonen okupula onduge. Reijonene sho a thiki okwa adhele po onganga dha gongala nosho dhe mu mono odhe mu lombwele a gandje oondjambo Reijonen ini ipula nayo okwa tameke okupanga omuvu pamukalo gwe.

Konima yomasiku omuvu ngoka okwa aluka nokwa mono uukolele wa gwana. Shika osha li nee esindano enene mondjila yuunamiti woshinanena. Petameko, ano momumvo 1870, aapangwa yaatumwahongi oya zile unene mongundu yoohepele mboka kwa li kaaye na sha okufutula epango lyoonganga dhakashiludhe. Nokuli momumvo 1880 onkalo yaantu oya lunduluka naamboka kwa li ya dhimbulula ekwatho lyomiti dhopashingolo oya zile moongundu adhihe - ha oohepele we ayeke ya pangwa.

Ekwatho lyomiti lya gandjwa kaatumwahongi Aasoomi, olya lundulula onkalo yaawambo kashona na kashona okwiinekela aahongi nokweetha po kashona na kashona unamiti wakashiludhe. lilonga yuunamiti yaatumwa yopetameko okwa li yi na epango ndyoka lyombinga.

ESHI OSHINIMA SHETWENI

Ovalumenhu vanekandangala lombandje, ovakongi vongombe ya-haivinga, vanashitaishiyala, vane-kombo laNambinga. Vamati vange! Oita ovamati, ongulungu ovanyeu-mbo, omwa lesa tuu moshifo shOkwetu omo mwa tongwa eengalo dokOushimba? Owa kuma ko tuu? Ovanyaasha vakwetu oshilonga eshi oshetweni. Otwe shi pewa ku-Kalunga ketu tu shi longe twa mana mo. Tu longeleni Omwene, naava mwe mu liteeka, ileni tu mu longeleni manga pe na efimbo. Longela Kalunga nomake oye. Ngenge ino mona omufita ile omweevangeliste, tuma ongalo oyo komufita wovanyasha Kleopas Dumeni, Posbus 25, Oshakati.

Ev. F. Nghihlua

OMWENE OYE OUYUUKI WETU

Eendjovo daKalunga otadi ti kutya kaku na omuyuuki nando umwe, aveshe va puka mo mondjila yOmwene, Omwene oye ouyuuki wetu, mufye otwa nyengwa tu kale ovayuuki Rom. 10:4, Mark. 10:17-23.

Ombibeli oyo okanya kaKalunga ta popifa oiwana nomapupi taa landula. Okuhapwilikina Kalunga ta popi mOmbibeli, meudifo levangeli, osho okukala kokule nai, omunhu

IYALOO, NDA PANDULA

Ehe, Ovambadja va tumhakanifa, eshi va hanga nda tilyaaneka omawu, okwa li ve shi ekundu la pya. Nde eshi va totela nge ova dimbulukwa nge keemhadi eshi handi ende.

Ta, Hakunodolo yoshikombo, ye yonhanga ehe na apa te i hange, hanga a ehena popepi neumbo la Namhongo pombada pe! Namhongo Kalunga ketu ye ta ti:

“Hakunokadolo, opo manga, efimbo tali ya shito, u kulukile koonyokokulu.”

Opo manga, elaka olo onde li uda moonakutalela nge po. Olwimbo lameme Justina Haufiku, mOvenduka, nounona vaye, ola holola Jesus Oye aeke. Meme Dumeni, Oshakati, okwa ti: “Tala, ino tila, eshi outeku wOmwene, opo u kale u na oukolele wokomwenyo, oto veluka.”

Moshipangelo onda ya mo ombadilila eti-15.4.70. Omufitaongalo Oskar Shamwe mOvenduka, eshi a mana okupa nge Ouvalelo Uyapuki, okwa ti: “Owa xupifilwa ko omafiku amwe, opo u udife natango evangeli laKristus.”

Manga ndi li mombete yange, Ovaherero 19 nOvadamara 10 ova fininika nge ndi va udifile. Onde va udifila lu-6 fimbo nda li nda nangala ongali melaka lOshihherero, opo nge hai ka ya keumbo laNamhongo, ndi ye nda longifa oshitalenti nde shi pewa nomOuvalelo Uyapuki nde u pewa pombete.

Hai ti: Hakunodolo yoshikombo! Edina eli olokweetela omunhu onghai, shapu ame Haikuti yaNangongo, a tala nawa metiti, a tale nge mu na omwai, nge mu na a velele.

Pombete yange onda ilikana ngaha: “Omwene ava va li apa, ova ti Omwene oku na eenghono ote ku velula, owa uda ko tuu eshi va tonga? Ame, ohai teelee eveluko meke loye.”

Ohandi pandula onye eongalo la-

waKalunga a shuna monima, nOmbibeli otai ti:

“Omwenyo wange itau mu hokwa.”

Omuyuuki oo kwa li ha yuka mOmbibeli, mOngerki, kowandaha, meilikano, paife okwa fya, a fiilila Mat. 24:10-12. Kristus okwe u ya po tu kale tu na omwenyo, tu kale twa wanenena.

Melongelokalunga hatu hokolola meitavelo lovakriste kutya:

“Oku li omutumba kolulyo laXe.” Hano Jesus oku li kwinya ta hondamene momaongalo omounyuni omukriste keshe. NaJehova osho kwa li nale ta hondamene meongalo lomuSion, ndele ina mona ko omunandunge nande umwe, ile umwe ta kongo Kalunga, ahowe, aveshe va nyono nai. Ps. 14:2-3.

Omwene okwa longikida a dime po ovanhu vomounyuni ou ombelela aishe. Ndelene eshi a kala e hole ounyuni, okwa lundulula etokolo laye Joh. 3:16. Okwa tula po ouyuuki ou womouyapuki oKristus, oshoongoti keonga laKalunga ou ta poleke ehandu laKalunga Heb.12:29.

Omwene Oye ouyuuki wetu moshilongo shetu, meumbo letu, moshilonga shetu, meongalo letu, mokomboni yetu, Ehol. 22:11.

Hai ti, ou li mondjila i lipipo? Omwene ota ti: “Ouyuuki weni nge nge kau dule wOvafarisayi novanongo vomikanda, moshilongo shaKalunga itamu i mo.” Venya okwa li ve na omikanda dikulu 39, na mefimbo linya Kristus ina holoka manga. Omapupi etu okwa lesa Ombibeli aishe, otwa mona Kristus mwene.

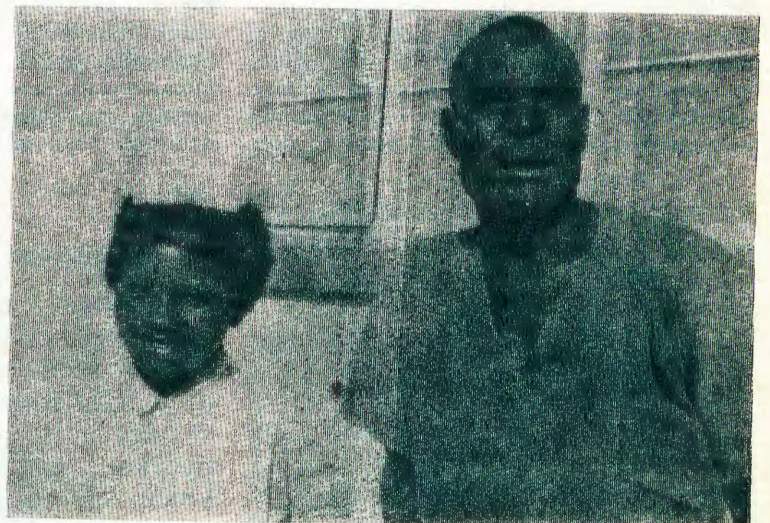
Omuyuuki omunhu ou ha ende a yukilila kwaau te mu ifana. Hai ti, omumwameme, ovanhu vakweni oho va yukifa peni? Ohatu ka ifanwa ketokolo. Shimbungu okwa ifanwa novanahambo vakwao va twale eengobe di ka dane omaludi, Shimbungu okwe uya nomhedi aike, dikwao e di lya po.

Omukwetu, owa pewa oufita waKalunga ovanhu vaye u va yukife kuye, kongerki yaKristus. Ou va kwete po tuu opo, ile we va lya po nale? Kepangulo oto ka twaalela ko tuu ovalunde ovo we va ulikila Kristus Omuxupifi? Lungamena okulya po oshiwana shohamba, u he shi mbebeleke, u he shi nyateke. Ngenge hatu nyonene owina, katu na ekufilo lomatimba.

Omwene Oye ouyuuki wetu.

Jonas Nengola

KRISTUS OYE OMBILI YETU PUKALUNGA



Omufitaongalo tatekulu Malakia Hauuanga ou e li paife moilonga yaye moshihakulilo shaNgela omo a nangekwa omafiku aa eshi a aluka koshihakulilo shaVenduka oko a li ko ta vele. Apa ota fikama naumwe womovahakuli ovo va kala tave mu hakula

Shakati, eongalo lOvawambo nOvaherero, mOvenduka, eshi mwa yakula nge. Nanye yo Ovashomeva nOvambaye naamushe ookaume.

Eendjayi doshiwana shetu mwa li ovawiliki voita oyo hai lwifa Kristus, nanye oonakutikulula, taleni nawa, nawa, Jesus Oye ondjila ye uya pomulunde. Ovanaudu vakwetu tu taleni ominwe dovau-

difi oonaku tu talela po moihakulilo. Taleni Odjona yaKalunga oyo tai humbata po omatimba ounyuni. Omwene ota uhala povalunde te va kongo.

Handi mu halele eyambeko lOmwene onye eendudu novahakuli noonakwiilikanena nge amushe.

Malakia Hauuanga

NATU KALATHANENI ANO NGIINI?

Ngiika kape na ngoka ta tseya nuupu oku-kalathana kwe nayalwe, manga inaa tseya oohapu dhaKalunga nkene dhe mu kaleke. Omukonakoni gwiinima yopankalathano Rev. Festus Ashipala moshigongi shomumvo shaapangi sha gongalele 1970 mOnandjokwe okwa popile ngeyi:

Uuyuni wongashingeyi ou lyaathane popepi shi vulithe nale mevi lyetu. Pu na iiyenditho ye endelega mbyoka tayi fupipike omalweendo omale ngoka ga endwa nale komalupadhi. Oondjila oombwanawa tadhi opalekwa opo omuntu a endelega nuupu. Uushiinda wonale inau fa wongashingeyi, oshoka ngashingeyi aantu oye lyaathane popepi unene okudhila-dhila omalukanda pokati komagumbo negumbo.

Oku na wo iilongelo noosikola moka oongundu dhaantu tadhi kala pamwe. Osho wo iilonga kayi shi we yegumbo limwe ashike ngashi twa longo nale omapyi, ihe ngashingeyi opu na iilonga yi ili moka aantu taa kala pamwe.

Ihe nando aantu ya hedhithanithwa ngeyi popepi, pethimbo lyetu aantu oye lyaathane kokule pamwenyo shi vule shito. Otaa tilathana paumbanda wopashipagani nopaumbanda wopanandunge, onke onkalathano otayi pula oshindji omuntu gwongashingeyi. Ota konakona uukwatya wi ili nowi ili pethimbo ndika, opo onkalathano yi opalekwe. Omakonakono ohaga ningwa muukwamwenyo womuntu wo wene nomekwatathano lyopasosiale.

Shika tashi landula mpaka osho omadhiladhilo gomundohotola gumwe gwaavu yopamwenyo M. Paloheimo, naashoka sha gwedhelwa po iinima yontumba mbyoka ya dhimbululwa yi na ekwatathano nonkalo tayi dhimbululwa mokati ketu.

Okukalamwenyo kwetu ngele okuwanawa, nenge okuwinayi oku na ekwatathano neko-ko lya za kokule. Ekoko ndika olyo ndyoka lya popiwa kaatseyimwenyo nokaapangimwenyo ayehe yethimbo lyetu. Oya popi ehumokomeho nenge ekoko lyokanona. liningwanima ayihe oyi na ekwatathano nako palutu nopamwenyo. liningwanima mbyoka ya longo mekoko ndika lyokanona itayi vulu okuuthwa nuupu nokushaangoka, oshoka otayi zi moo-



Saara Nehale omulongi gwoskola yaaposi mEngela

OSHIVILO SHOUDIAKONI MENDOLA

Oshoondaha yeti-23.8.1970, oya li youdiakoni mongerki aishe. Ovakulupe, eehepele, ovapofi noingudu ova ongelwa moshivilo shavo eshi. Ova kwafwa opo va fike ile va kale pelongelokalunga lavo.

Ova mona onghenda ngaha, vamwe va etwa noihauto, vamwe keembashikela, vamwe onoutemba no-sho tuu. Moshivike shelongekido, omudiakoni Likius Neumbo, okwe li hepeka momikunda okukonga ehanga lapyi, opo a monene ovaufanwa ounima vasha.

Eshi nee ve uya mongerki, opa li nee pe niwe ehafo linene, eshi va mona omhito okukala mongerki pamwe neendjolowe. Mongerki omwa li eekuwolo dovanyasha, nomaudano ounona neekuwolo davo. Konima yelongelokalunga ova tulilwa po okapyu nokamungome nouxupinima womidjalo noukaya. Eshi oshe va etela efimaneko laKalunga, eshi nani navo yo va talika ovaholike vaKalunga.

Kalunga na kwafe omaongalo a dimbulukwe ovanhu ve li ngaha.

A. M.

mbinga odhindji. Olwindji okwa popiwa ashike iiningwanima yokombanda nenge yomudhiingoloko, ihe omakonakono gaatseyimwenyo nomepango lyuuvu womwenyo, otapa holoka kutya opu na sha sha pumbiwa mantu nompumbwe ndjika oya tameke methimbo lyuunona. Mboka ishewe ye li nawa noye na uuthikepamwe noye li nawa monkalathano noya kola mokukalamwenyo kwawo, otaku ndhindhilikwa kutya ekoko lyawo momathimbo ga piti okuza muunona oya li ya mono onkalathano ombwanawa pokati kawo naantu, nonkalathano ndjika oyo ye ya ningi aanelago noya kale ya gwana miinima iyihe.

Taku tsikilwa

Mounyuni omu na oluhodi

Onghalelo yomalimbililo oya etela nge ouwi momwenyo wange. Nomefimbo eli lounyasha ola kala lidjuu momadiladilo ange, onghe eshi ndi udite ngaha omwenyo wange kau na ombili, netulumuko. Onde shi itavela shili kutya, mounyuni omu na oluhodi.

Nghi na nande eshi hai dulu okuninga, nghi na ombili. Ouwa ounda hala okulonga ihandi u longo, ndelenee ouwi ou ine hala oo handi longo nondi na ekwatafano nao. Opo nee onda dimbuluka kutya, mboli onawa okukala pe na ookaume hava pukulula momapuko, ndee naashi yo inashi kwafa sha. Nani umwe auke. oo ha kongo eemwenyo oye kaumelela Jesus Omona



Omusamane T. Negumbo gwomoskola yaaposi kEngela

"YALOO KOMPITO NDJIKI"

Enongelo lyaayakuligongalo:

Ote pandula Kalunga tate sho nda mono ompito ndjika okukala moskola yetu yaaposi mEngela. Onda mono mo oshindji shoka nda li inaandi shi tegelela, noinandi shi dhiladhila. Ano nandi popye mpaka ngashi

Okulesha mwene, okushanga mwene, okuyalula mwene, okutungwa iimbamba, okulunga iikombe nayilwe. Ngashi tamu tala mefano sho ndi na embo, otandi lesa ngaaka. Pepandja ndyoka omwa nyolwa "Kalunga ohole."

Ohatu lesa ngeyi: Ominwe dhokolulyo otadhi gumu oondanda ndhoka dha fa iipulu, manga dhokolumoho tadhi fatula naanaa. Tashi ti, ominwe dhokolulyo omiwiliki, manga dhokolumoho omitumbuli.

Otu li mo 18, yamwe 15 oyongerki yetu, gumwe ina shashwa, yaali oyegongalo lya-Anglikani kOdibo. Otatu tekulwa nawa kolutu nokomwenyo. Otu uvite nawa. Ohatu nyanyukilwa wo aatafelipo yetu, mboka taa zi koombinga noombinga. Nangoye wo ila u tale opo waa lombwelwe owala.

Otatu indile aaleshi amuhe yOmukwetu, mu tu galikanene, Kalunga e tu humithe nawa komeho esiku kehe meilongo lyetu. Omusindalongo aguhe gumwe ngaa, eyooloko oondanda ashike. Kalunga na hambelelwe sigo oompaka.

Kundweni kukuume keni,
Tobias Negumbo, Eheke.
Omukwathi melundululo ndika
Ev. St. liteua

waKalunga. Natu mu konge eemwenyo detu di mone etulumuko mounyuni omu naamwinya.

Tomas Neko

EHANGANO LOVALIHONGI OVAKRISTE

Ehangano eli oshike noli na oshilonga shashike? Ohali tumbulwa luhapu medina loshingolo "The student's Christian Movement," (S. C.M.). Elalakano lehangano eli ola shivika mounyuni aushe. Fye mOwambo ole tu dilila kuS.A., oko le uya ko pokati kefelemudo etimulongo nanhano nane.

Oli na ombelewa yalo muPreto-ria. Ehangano eli otali monika meefikola adishe dOvalaule nodOvatitlyaane. Nande omadina a yooloka, elalakano limwe alike. Osha ningwa notashi ningwa natango momadu mahapu kutya, Oholomende shaa tai file oshisho eputuko nehongo loshiwana moshilongo, ohai lalakanene ashike unene eputuko leendunge nolutu, hamunhu aushe; olutu, eendunge, nomhepo.

Ehangano eli oli na sha noukriste nokukalamwenyo kwomulihongi, oku mu tunga pamhepo, oku mu longekidila eeprograma dopakriste. Onghe ovaitaveli neengerki da tala osha pumbiwa meefikola mu kale elinyengo eli ekwakriste. Oli na omhepo youkumwe (Eku-menisme). Kali na ondjoolola yee-ngerki. Olo ngashi edina lalo tali shi holola, **Ehangano lovalihongi ovakriste**

Moitwa tai landula tamu kwate-lwa elalakano lehangano eli. Olo a) okukwafa ovalihongi va diinine eitavelo lavo muKalungakatatu-mwe pahongo lOmbibeli, vo va kale ovahongwa vaJesus voshili.

b) Okukulika okukala kwovalihongi kwopamhepo moku va pendulila ohokwe yokulesha Ombibeli, Ondjovo Iyapuki yaKalunga, nehalo lokuliyapula.

c) Okuxwameka ovalihongi ve liyandje mokutandavelifa oshilongo

shaKalunga momudingonoko wavo nounyuni aushe, mokulonga oshilonga shohole nomokukala taku holola eenghono devangeli muvo.

d) Okupendulila ovalihongi oudiini meitavelo leengerki davo no-kuva tula meilikano nomoilonga okudimbulukwa eilikanano laKristus. "Aveshe opo va kale vamwe."

Eedula kedihapu da pita po sha dimbulukiwa kutya, elinyengo la tya ngaha, otali pumbiwa yo meefikola detu muS.W.A. mefimbo eli omhepo yetumo tai xupipala meefikola. Momudo 1968 oshikandjo shelongo nomikalo. Dept. van Bantoe-onderwys, paidilo ya yandja edimino ehangano eli li dikwe yo omu, fye tu hangane noitai yaS. C.M. muS.A. Oitai yehangano eli moshikandjo shaS.W.A. oya dikwa meefikola edi:

Okahao, Odibo, Onandjokwe, Oshigambo, Oshakati nOngwediva.

Oilyo yehangano eli meefikola edi otai hapupala alushe. Moshoo- ngalele sheshakeno omo oilyo yoi- tai ya tumbulwa pombada ya sha- kena, omwa li ovalihongi ve dule omafele ane omudo wa ya. Meefi- kola dimwe muS.W.A. elinyengo laS.C.M tali monika kanini. Mu- dimwe itali monika nokuli. Oma- hangano ovanyasha opangerki taa kwafele okuninga eeprograma dopakriste meefikola edi.

Apá ohandi holola paxupi oshikalimo shefiku lovalihongi leilikanano nohandi indile omaongalo aeshe aKristus, ootate noomeme meitavelo va kale pamwe nafye meilikanano efiku eli.

1. Ohatu hambelele nokupandula Kalunga:

-molwohole yaye eshi a yandja Omona omolwexupifo lounyuni.

- molwomapuniko mahapu opa- mhepo hatu a pewa meyakulo longerki, mokulesha eendjovo da- ye, momahangano opakriste ngaa- shi ehangano lovalihongi ovakri- ste, oyongalele yovanyasha, ou- kongindjila, eenhanda nosho tuu.

- molweemwenyo dovanyasha va- hapu da ehenifwa kuKristus momahangano aa.

- molwoufemba wokukala moma- longelokalunga nowokulongela Kalunga nopuhe na omashiliko, ngaashi momadu amwe.

- molweemhumbwe dopalutu-oipa- lwifa, omidjalo, omhito yokuli- honga, ovakulunhu, ovamwame- me nookaume have tu kwafa.

2. **Ohatu kuwile Kalunga:**
- opo ovalihongi medu letu nomou- nyuni aushe va pewe omhepo yeidilululo nova tambule Kristus ngOmuxupifi weemwenyo davo.

- opo ovalihongi va kale nohole yeendjovo daKalunga, have di leshe efiku keshe nohave liufa kudo.

- opo ovalihongi va kale eendo- mbwedi tadi hokolola Kristus opo va ete vakwao mouhamba weulu.

- opo ovalihongi va nyanyale kee- mwenyo davo oumbwada woiku- nwa, woluhaelo nowoulunde ke- she.

- opo ovalihongi va pite nawa omakonakono avo noneudo.

- opo ovanyasha aveshe va puni- kwe pamhepo momahangano avo opakriste, ohole i monike nou- kumwe u pangele.

3. **Ohatu ilikanene:**
- eefikola medu letu.

- ovalongi novakulunhu vetu naa- veshe ovo ve na sha neputuko letu lopalutu nolopamhepo.

- ovawiliki aveshe vehangano lo- valihongi ovakriste meefikola no- moikandjo.

- ovawiliki vovanyasha moongerki detu.

- ovalongwa vakwetu momadu ou- komunisi, tava hepekelwa eita- velo lavo.

Ohatu pumbwa yo ekwafo loi- maliwa opo tu shakenife eemhu- mbwe dimwe domoyoongalele yetu tadi pumbwa oimaliwa.

Pamwe nomuyapostoli Paulus o- hatu ingida kovaitaveli vakwetu muKristus: "Ovamwameme, kaleni noku tu ilikanena", 1Tess.5:25.

Omukulunhu wEhangano lovaliho- ngi ovakriste mOwambo,
Apoljos Kaulinge



Omulongwasita Matti Amadhila ngoka ti ilongo kOtjimbingwe pamwe neefolo lye Anna nokasheelikadhona kawo

INO ENDA MOSHINYANYA- NGIDHO, INO TALA

Paife ondi li omunyashalela, nde okudja kwange keedula odo, onda kala ashike handi udu Oshinyanyangido ngokatana komoiya, nokuli kanda li ndi na onghwa nasho oku shi mona.

Odula oyo tuu ei 1970, mujuni omo ehalo la penduka mwaame ndi ka tale onhele ei hai tu dilile omambo okulesha, noifo Omukwetu nEhangano. Ta, mokuya mo onda li shili nda kumwa neenghono mowoilonga yamo iwa notai kumwifa. Elao lange okwa li la fa la fewa kombabi, osheshi omulongi wamo tate Sebulon Ekandjo, omo naanaa nde mu hangele, nde onda li nde mu pandula eshi okwa nyamukula ashishe nda li nde shi pula. Okwa ulikila nge yo aishe nghe tai longo.

Onda pula nghe ha hovele okulongekida eembilive detweni mOmukwetu, nonghe ha mono oudjuu ile ha mono ehafo mokushininga, aishe ei okwe yelifa nawa, nonda dja moupofi nda li mo. Shimwe sha kumwifa nge unene osho ondada, nefiya lokuteleka eendada. Oixuna shili, osheshi ngenge ino enda mo nale nde to hange ondada imwe pedu, oto i kupulashi ashike moimbodi, to ti okatenda kongaho. Okaima oko, shiimba oke na oule wodeimi imwe, ka nyolwa nee ondada koxu'lo yako kwii nde to kumwa.

Onda ulukilwa yo omambo nghee taa ningwa, taa tulwa kumwe neshina limwe tali hondjo. Tala ko nee keshina eli la kula, tamu i eembapila dinene da yela ndee mokudjamo ombapila oya ninga Omukwetu wa wana po.

Onhele ya tya ngaha, oi na shili oilonga na otai pumbwa omunhu ou ta ifanwa nde za itavele, ta yofwa a tye shoo, ye a kupulwe ngaa nde ta ti depa!

Onda pula kutya aveshe ava tava longo omu, ovaendele po nee moshikola ya tya ngaha? Enyamukulo nda pewa: "Ahowe, ova ulukilwa ashike ndele va shiiva oku shi ninga."

Ohandi halele ovalongekidili vetu vomambo noifo elao nouwa aushe. Kristus Oye eenghono detu.

**Maria Ngh. Nenghwanya
Nakayale-Hospitaal**

A KANA MONDJALA 1915

Kaaleshi amuhe yOmukwetu otatu kongo Ndiyakupi yAluvilu a zile Mombalantu kondjala onene yomumvo 1915. Okwa ka hupa ondjala kUushimba. Ano pethimbo ndiyaka oye omukadhona omunene. Omahokololo otaga ti, okwa fa a li muTsumeb. Kombalantu okwa thigile ko aamwayina mbaka Nalukale lwAluvilu na onkelo yawo Kashuupulwa Amhindo.

Ano ngele ope na ngoka wa tseye Ndiyakupi Aluvilu, nenge pamwe oku na oyana ya Ndiyakupi ye li mUushimba nenge palwe, nyolela omusitagongalo Titus Heita, Nakayale, Pk. Ombalantu Owambo, Suidwes-Afrika.



Omufitaongalo Elia Nghikembwa oo e li monena odiploma yaye kuSuid-Afrika

VA PEWA EEDIPLOMA

Eti-27. 11. 1969 okwa li efiku linene mofikola youteologi yokombada yaMapumulo, muSuid-Afrika, eshi ovo va longekidilwa oshilonga shoufitaongalo oule weedula nhe kumwe naavo ve li ovafita nale va mona eediploma davo mouteologi.

Ovapiti ovo kumwe novalongi vavo, ova enda momukweyo oo wa li wa dingililwa kongudu yovanafikola vakwao nokovaenda voshivilo, okuya mongulu omo mwa ningilwa oshivilo eshi. Omuprofessor A. Van Selms a twala mo oshivilo eshi nokwa popifa oovene vasho kutya:

"Nye omwa kala mekondjo efimbo lile nomomaudjuu mahapu mokulihonga kweni, ndele nena omu na ehafo linene eshi tamu mono oimati yoshilonga sheni shelihongo. Konima yomaudjuu oku na ehafo. Nye otamu tumwa n.u ka yakule ovanhu vaKalunga.

Ooyene yiilongo, omo tuu mu li miilongo yeni?

One omalenga gaKalunga e mu pa elelo lyaantu ye, kombanda yevi. Ndishi owa ndhindhlike nga kutya oshinima shika omolwehalo lyaKalunga ou li po noto tegwa u gwanithe ehalo lyaanguka e ku pa e pangelo. Kalunga okwa hala u mu simaneke, oshoka Oye e ku holle noye e ku hogolola.

Ano sho u na okathimbo kowala okukala kombanda yevi, dhimbulukwa Omushiti gwoye. Holoka aluhe melongelokalunga moka aantu ayehe taa hempulula oondjo dhawo koshipala shaKalunga. Ino hala okuhekelekwa kiilonga iidhigu u yi na moshigwana nokumona oonkondo oompe? Kalunga okwe ku pa esiku lyevululu ko nota tegelele u li yapule aluhe.

Aapangeli yamwe otaa monika aluhe mongerki oshoka oyo ya tseye ashike ye shi na osha zi kuKalunga uulenga, eliko noonkondo ayihe oya zi kuYe. Oonke ano oya hala okusimaneka Kalunga pamwe noshigwana ashike. Notaa gandja wo oshiholelwa oshivanawa kumboka ye ya inekela nokaanegumbo lyaowo. Onawa sho haa shi ningi nyanyu.

D. Aludhilu

Otamu ka shakenekelewa yo nokomaudjuu ndele mwaaishe Omwene Jesus oku li pamwe nanye moilonga yeni."

Konima yokupewa eendombwedi, ovaenda aveshe va yakulwa nawa noikulya, nokonima oshivilo sha xulifwa nelongelokalunga mongerki yomofikola ei komukulunhu wofikola, Rev. A. I. Berglund.

Kalunga na hambelelwe eshi ta tumu ovalongi mepya laye.

Umwe waavo va pewa eediploma,

Rev. Elia Nghikembwa



Ongundu yaa-sita mboka ya li ya pewa oodiploma moMapumulo

EKWATHO KONGERKI

Nepandulo enene Epangelongerki lya taamba R100.00 dha gandjwa kongerki onkwaevangeli paLuther yaAandowishi mUushimba (DELK.) nedhiladhilo lyokuyakula oshilonga shaamati yetu mUushimba. Epangelongerki lya utha iimaliwa mbika yi longithwe mokufuta ondjambi yomuyevangeliste Petrus Matheus, Keetmanshoop, ndjoka ya gu po ombadhilila.

EFANEKO LOVANYASHA

Helsinki, muSoomi- Ovanyasha muSoomi, unene ovo hava popi elaka lOshisweden moshitayingerki shaPorvoo, ova faneka ngaha kutya ehoololo lomumbishofi nali kale ko alushe moule weedula nhano moitaingerki aishe oyo yeengerki eenghwaevangeli paLuther domuSoomi. Opwa fanekwa natango kutya omumbishofi ina kala ngeno moilonga yombelewa efimbo li dule eedula omulongo, novapedjulwa moilonga ya tya ngaha nava kale va hanga oukulunhu womido 70.

Information

Oti ilongele uualithi

Osikola yaapangi mOnandjokwe oya taamba numvo omupangi a za kUushimba, okwii-longa oshilonga shuualithi. Meme Else Ndjavera, Usakos, okwa pitile osikola yuupangi 1969, moshipangelo shaH. F. Verwoerd, Pretoria, nonkatu yopombanda, nomoluudhiginini we mokwiilonga, okwa pewa osipela yesindano, ndjoka yi na okupewa ashike ngoka aadha omwaalu gwopokati noopelesenda 80 dhiilongwa ye ayihe momakonakono gatatu.

Omupangi Ndjavera, Omuherero, oye gwahugunina a longwa muSuid-Afrika, a za kuS.W.A., Pamwe naye mosikola ndjoka okwa li naErnestina Uumati, ayehe ya pitile Matrika 1965, mOkahandja. Mosikola ya li mo omo moka aanasikola aatiligane haa longelwa.



Omupangi Else Ndjavera e li mOnandjokwe ngashingeyi



Omusitagongalo Kristof Shuuya ngoka a galuka kuSoomi

VOLKSWAGEN

Omuholike, ilandela Volkswagen kombiliha. Andiya manga omodela 1968, oomayila 32500, ondando R1250. Pula kuD. J. COETZEE S.A.Polisie. Oshakati, uunene kuA. J. J. NAKANJALA, ondjukithi ndjoka.

SHIKWAYA A YA KUPAULINUM

Omolwoluhepo lwaasita moshitayingerki shaKavango, nopapopilo lyaasita yaKavango, Epangelongerki lya utha omuyevangeliste Oiva Shikwaya a ka tameke osikola yuusita kOtjimbingwe petameko lyaSeptemba numvo.

AME NDA NINGILWA OINIMA INENE

(tala oshifo No.15, epandja 7)

Eumbo laina yomulongwapangi Klaudia Nghishiilenhapo, ou a fila omafiku aa mekandomo loshihauto, ola pya po filu inaku xupa nande sha. Meme Johanna Kaunongwa, ina yanakufya, ota shiivifile ovaleshi vOmukwetu aveshe ta ti: "Ame nda ningilwa oinima inene, osheshi konima yeefya, eumbo letu ola pya po filu, nde edina lOmwene nali hambelelwe. Meme Johanna ove li mEndola, Omundudu.

A GALUKA KOSOOMI

Omusitagongalo Kristof Shuuya ngoka a kala kOsoomi oomvula ne ngashingeyi okwa galukile kOwambo. Okwa vulu okudhana pamwe natse oshituthihambeleso mOmandongo. Tate Shuuya hwiya okwa yile ko omolwoowino dhiilonga ngele yiikaha nenge yeyakulo lyiilyo yongerki paudiakoni mongerki yetu. Komunwe gwe oku na okalinga edhindhiliiko lyekondjo ewanawa meilongo lye nomuthika gwopombanda muuteologi, M. D. nkoka tate Shejavali wo e ka na.

Otatu hambelele unene Kalunga tate kehukumokomeho ewanawa lya tya ngeyi maayakulingerki yetu. Tate Shuuya ota yakula manga mokuvangelitha momagongalo peha lya-tate Efraim Angula, ngoka e li natango muSoomi. Komeho iilonga ye mbyoka e na oku yi longa nehalla lye, otayi ka uthwa.

Tomas Nuunyango, Khan Min, Outjo, -Ota tseyithile aayakuli ayehe yongerki mUushimba nomOwambo kutya, yo oye na ondjala onene yoohapu dhaKalunga oshoka pehala ndyoka ye li po inali tseyika nawa, onkee ihali talelwa po wo kaasita nenge kaayevangeliste- "Etalelopo lyeni otali tu etele ombili. Inashi gwana sho hatu iningile owandaha nenge elongelokalunga, ihe otwe mu pumbwa one aakuluntu yongerki," osho ye mwenne a nyola kOmukwetu.



Meme Johanna Kaunongwa

uzerere wononkango deparuro lyo-
nomwenyo detu.

Uuzerere una wiza pomuhowoho-
wo kOwambo ntantani ana wiza oku
kwetu eyi vatumwa vana wiza mo-
Kavango. Ose tuna kara norupandu
morwasirugana esi sezoworo lyova-
ntu navenye. Mpandu Hompa, nke-
nda zoge tai tu kwama, nomomu-
ndema tu minikire naMpepo Mu-
pongoki ipo tu sike kembo lyana-
runye.

EPANDURO

Vanavamali tatu hamberere Hompa
Jesus e yi konkenda zendi nose tatu
vuru kuzigida edina lyendi meka-
nderero.

Ose twa kere monomundema dou-
pagani nye Jesus Kristu ana tu pe

OMAUFORMHANGO EHangano LOVALIDILIKI MONGERKI ONGHWAEVANGELI PALUTHER YOMOWAMBOKAVANGO

1§

Edina lehangano olo: **EHangano LOVALIDILIKI VOIKOLWIFA.**

2§

Ehangano eli otali longo apeshe opo Ongerki Onghwaevangeli paLuther yomOwambo-
kavango tai longo. Otali longo ongoshitayi shOngerki ei.

3§

Elalakano lEhangano olo okukwafa ovakriste vOngerki ei mokukala kwavo, unene mo-
kukondjela oukoshoki wokomwenyo.

- 1) Otali koleke oukumwe waavo va tokola okweefa oikolwifa aishe noku va koleka
mekondjo eli lavo.
- 2) Otali shiivifile ovakriste novanhu avesho elao loulidiliki, tali longifa oufo ou-
traktate nomapukululo amwe e lili noku lili moyoongalele n.sh.t.
- 3) Otali nyolele membo oilyo yaavo vo vene va tokola okweefa oikolwifa, nde tali
kwafa shili ovo ya tila oupika woikolwifa.

4§

Omukwashilyo shEhangano eli oye omukriste keshe a hala okukondjela oukoshoki
womwenyo nokukwafa oshilonga shEhangano shi tandavele.

Hamushanga wEhangano ota tambula omadina ovalidilikifi mEhangano nokutambula
oiyandjiwa neengalo nomayambo yo.

Oshilyo keshe shEhangano otashi teelelwa shi diinine shili kekwafo laKalunga omala-
lakaneno Ehangano eli.

5§

Opo Ehangano li wanife oshilonga shalo nawa, otali hoolola mokati koilyo yalo
Omuwilikindjovo naHamushanga tava longo omido nhano nopo taku hoololwa vape ile
tava hoololulwa.

6§

Ehangano otali lelwa kEwilikongudu omo mu noilyo ei:-

- a) Omuwilikindjovo wEhangano
- b) Hamushanga wEhangano
- c) Oshilyo shimwe sha hoololwa koshooongalele shEhangano
- d) Oilyo ivali ya hoololwa kEpangelongerki
- e) Oilyo oi nokukala i na yo novaponhele vayo.

7§

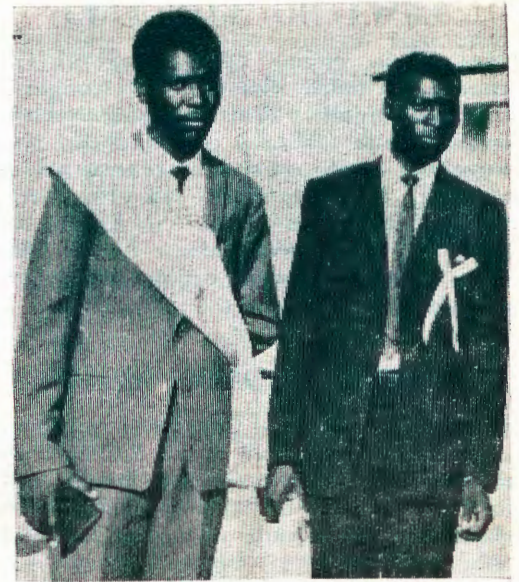
Oshilonga shEwilikongundu osho okutala omaufomhango Ehangano a longifwe payuu-
ki noukoshoki wokomwenyo u diininwe.

8§

Oshilonga shOmuwiliki osho okuwilika oyoongalele nokukwatela komesho oilonga
yEhangano alishe.

9§

- Oilonga yaHamushanga oyo:
- a) Okukala Hamushanga moyoongalele.
 - b) Okudiinina embo lovalidiliki.
 - c) Okutumina Epangelongerki eh-
kololo lomudo.



Ovapati ava ove li yandjela moilo-
nga keshe yeyakulo meongalo lavo
nomokati koshiwana shavo.

EPUKULULO

Onda hala okupukulula oshigwana shetu
shAawambo ashishe. Taleni aakwetu nge-
le tapu holoka oshiponga pegumbo lyo-
ntumba nomwa hala omunegumbo gwe-
ni e li mUushimba e ye mbala, inamu
mwiithana nondelekelama yokopoosa,
ihayi endelelitha omuntu nando. Nokuli
oyi lile po ashike okutseyitha shoka
sha holoka po haku kutha omuntu mii-
longa nokuya kOwambo ngashi a halika.

Uuna wa hala okwiithana omuntu
mUushimba e ye neulumo longitha o-
ndekekelama yakomufala, opo ta pewa
epitikilo e ye mbala ngashi wa hala. U-
nene tuu huka kOlange osha pumbiwa
noonkondo shili. Amuhe mwa hala o-
kwiithana aantu mUushimba, longitheni
omukalo nguka gwondelekelama yaandja
komufala opo mu pewe aanegumbo lye-
ni mbala pethimbo. Kotokeni mwaa he-
peke iimaliwa yeni mokudhenga ondele-
kelama yokopoosa, ihe mu longithe ndjo-
ka yakomufala. Samuel Simeon

OMUKWETU

Oshifo shOngerki onkwaevangeli paLuther
yomOwambokavango
Die Tydskrif van die Evangeliese Lutherse
Ovambokavangokerk
Oha zi mOniipa,
Omukuluntu gwoshifo/Hoofredakteur Om-
mbisofi Dr. Leonard Auala,
Amushanga / redakteur Sebulon Ekanjo
Ondando komumvo mOwambo 70c kUushimba
nOkavango 90c
Kombanda yomafuta R1.30.
Oondando nomambestelo naga tumwe
kOmukwetu,
Oniipa, P/B. 2015 Ondangwa, S. W. A.
Oshinyolwa shuule
wondeimi 1 otashi futilwa R1.00
oondeimi 2 " " " R1.90
oondeimi 3 " " " R2.70
oondeimi 4 " " " R3.40
oondeimi 5 " " " R5.00
Oto vulu okutuma efano lyaashoka wa hala
shi tseyithwe nomatumbulo wo gasha ngele
ope na.

The Finnish Mission Press Oniipa
P/B 2015 Ondangwa S. W. A.