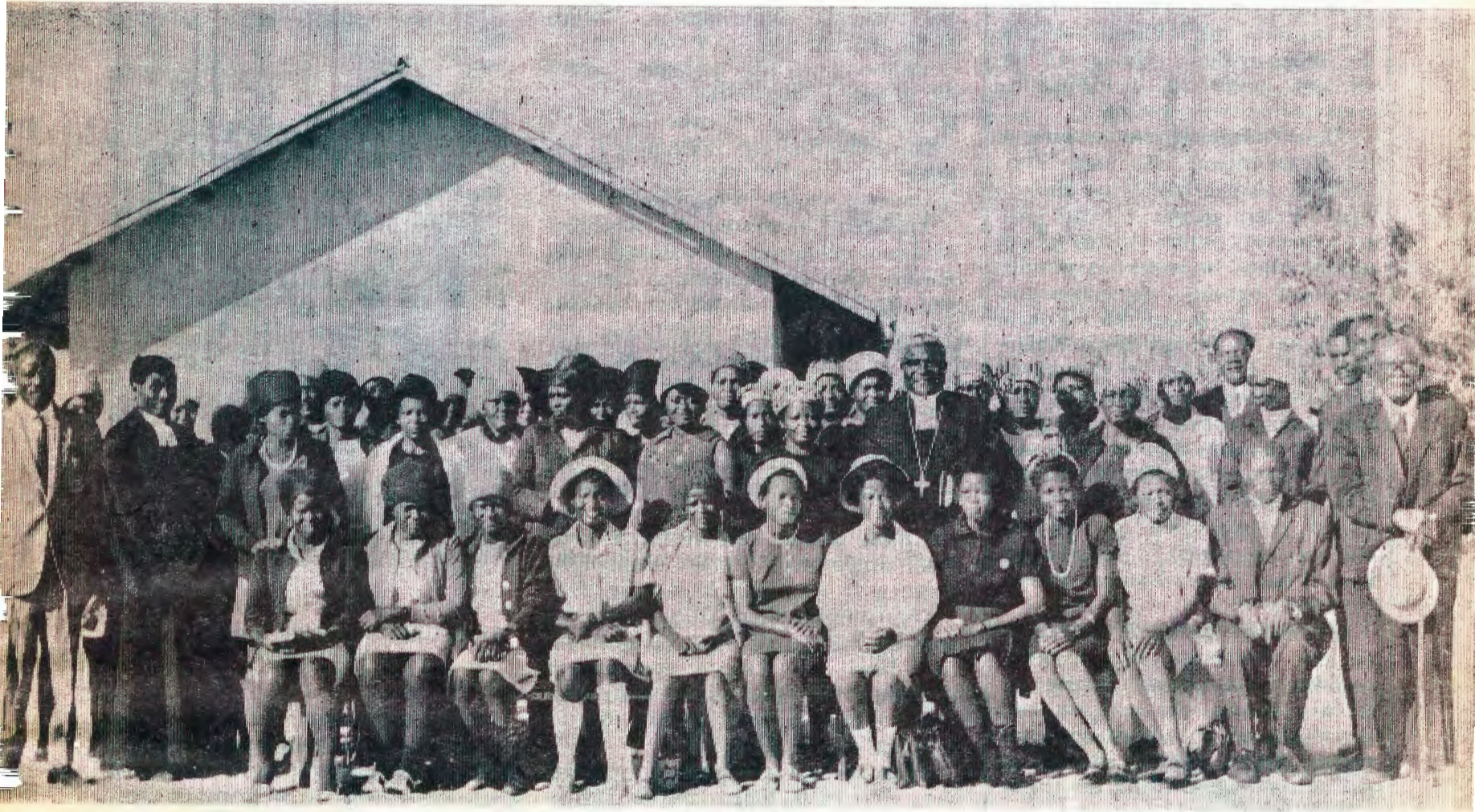


# OMUKWETU



## Oomvula ethele

Itashi gwana okukoona ko shoka sha longwa muule wethimbo lyoomvula 100, naashoka tashi tu penduthile ehambelelo omolwethimbo li thike mpoka, ihe itatu idhimbike wo okutumbula shoka tu na ompito yoku shi tumbula omolwethimbo ndyoka.

Ehambelelo limwe otali penduthwa mutse sho tatu dhiladhila nkene oshilonga shevangeli inashi mona eimbo lye-tidhaganwo nenge lyekelelwo ngashi sha monika olwindji momavi ogendji, momapangelo gamo. Emanguluko lyokugalikana lyokutumbula Kalunga ta hupitha mOmwana Kristus, nenge emanguluko lyokuholola oshili yi pangele mokati kaantu ngashi tashi pulwa kevangeli, shika kashi shi nando oshinima shesiku kehe. Osho ompumbwe ya gwanihilwa omuntu kuKalunga kwa li kee na oonkondo dhoku yi adha.

Ookuume ketumo taa talele po oshilonga sha longwa mpaka, inaa hokwa unene okutala shono sha ningwa po, ihe shono shi shi okuningwa natango. Shika oshi li mondjila, oshoka okudhiladhila emanguluko lyevangeli ndyoka lya kala mpaka uule woomvula 100, otali thikamenwa aluhe kiinima yontumba nenge yongandi mbyoka yi na omandhindhiliko taga tilitha omuntu.

Tse otatu mono nuupu ehologo lyondhinokalunga lyuuhasha moohapu dhaKalunga lyokwaaipula nuulunde, nenge lyokuholela yalwe muulunde, ihe kashona kowala nenge itatu ipula nokuli iyimati yihuna ayihe mbyoka nondjahi yaKalunga kombanda yayo. Kalunga ita talalekwa kethimbo twa kala noohapu dhe, ihe ota vululukithwa nkene oohapu dhe tu li nadho, padho. Opo kaatu kutithwe kushoka sha ningwa po, nату ipule ngeyi: Ethele etiyali lya tamekwa koshigwana shika, otali ke shi etela shike? "Etegameno lyiigwana oKristus."

## OVA SHUNA NEHAFO LINENE

"O, Owambo oyo onhele inene, nde onde lihonga mo shihapu shi dule eshi kwa li ndi yiudite ashike," osho umwe wovaenda Ovasoomi va talela po Afrika omafiku aa a tonga.

Ongudu ei yomilongo 71, oya enda moilongo imwe yaAfrika nde mOwambo ova fikile mo eti-12.6. 1970. Ova enda mewiliko lakaume kOvawambo omushamane Matti Koponen nameme V.Rannikko.

Fimbo inava fika pOnaipa, ongudu inene yovanashilonga meongalo laNiipa, ove va shakaneka nomaimbilo ehambelelo pOmandongo, ponhele tuu oyo ovatumwa votete va fikila eshi veuya kOwambo.

Mongudu yavo omu na ovalongi, ovafita, navamwe yo voilonga ilili nai lili. Ova dja keembinga neembinga doshilongo shaSoomi, notashi wapalele elalakano lokutalela po Owambo, ile lokwenda peenhele ngashi va enda po keembinga adishe dOwambo, unene momapya etumo.

"Ngenge odila yetu tai ka tengela pokapale kaHelsinki, i lambele, ohandi kala ndi na omukumo kutya paife otu na vali ovalongi vape voshilongatumo," osho omuwiliki wavo a to nga tate M.Koponen.

Omuwambo okwa tile: "Omwoonngo ho lilile oyoyu hau ku kumini-ne." Ehafo oli fike peni ngenge shili ongudu i fike opo i hole oshiwana eshi ya talifwa eemhumbwe dokeembinga adishe dongerki?

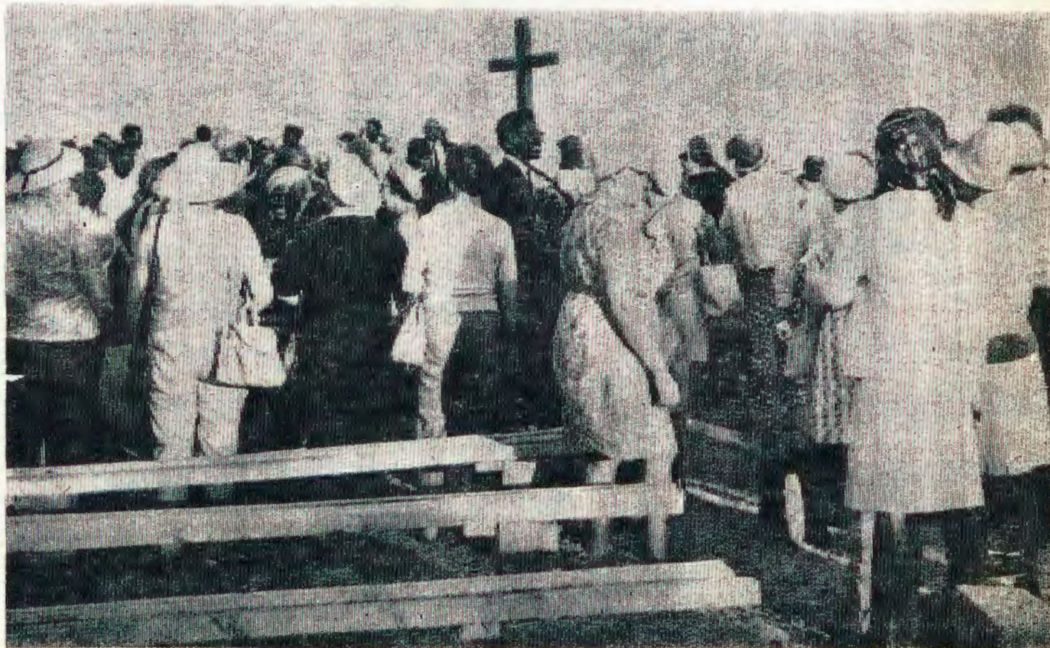
POnamutuni ova landela ovamati vetu ovo hava longo opo omaimbilo. POniipa ova kunda oshoongalele shovafita neeranda 76.14,

mokafimbo ashike oko va kundana kutya, ope na oshoongalele sha tya ngaho. Katu shi natango eshi tava ka longo kwinya, nde hatu shi linekele, otashi ka hambelelifa Kalunga nomedu eli letu. Omwene ne tu kolekele moukumwe ou.



Omukwathi mosikola yaaposi Lukas Hamunyela

Aayenda Aasoomi mEngela - Oku shi yeleka nomahala ogendji ngoka aayenda ya talelepo ngiika kape na ehala lyi inyengitha oomwenyo dhawo lya fa ndyoka lyoskola yaaposi mEngela.



Ongudu yaayenda Aasoomi otayi minikwa kAawambo pOmandongo.

# Esilohenda IyaKalunga nonkalelo ye

**Dr. Martin Rautanen** momumvo 1926 okwa li a nyola euvitho tali landula mpaka moshifo shO mukwet u, shoka tashi ithanwa ethimbo ndiyaka Osoondaha.

Esilohenda lyoye Kalunga otatu li dhimbulukwa, omeni lyontempeli yoye. Ngaashi edhina lyoye Kalunga, ongaashi wo esimano lyoye, ndongo komahulilo guuyuni. Olulyo lwoye olu udha uuyuki.

Omupsalmi, nakusimaneka Jehova Kalunga kalsrael, sho ta popi ontampeli ota popi onkalelo yaKalunga. Otempeli yo yenyene nenge onkalelo yaKalunga oyo egulu IyaKalunga. Nongashi sho tatu galikana, nongashi Omukulili gwetu sho kwe tu nongeke okugalikana, okwa ti: Tate megulu. Kalunga mwene ta popi ta ti: Egulu oyo onkwaniilwapundi yandje nda kuutumba mo, nevi oyo oshipundi shoompadhi dhandje nde li lyata.

Otempeli yo yenyene efululo lyayo otayi ti ongulu ya tungilwa Kalunga. Otempeli ya li ya simana mAisrael nomaapagani ndjoka yoshilando shaJerusalem. Motempeli ndjiyaka omwa li mu na owalitali.

Aasaseri nokutya, aayakuli yiilonga yajehova Kalunga, oyo ayeke ya li ya pewa eha motempeli okuuvithila Aisrael oohapu dhaKalunga. Oyo ya li ya lombwelwa omayambo goondjo nogomahambeleso.

Muuyuni wetu wEtestamendi Epe Iyajesus Kristus, egongalo lye mboka ya shashelwa medhina IyaKalungakatatugumwe, oyo onkalelo yaKalunga ketu. Nongashi Omuwa esiku a londo a yi megulu, okwa lomwele aatumwa ye: "Ogame ndi li pune omasiku agehe." Oohapu ndhoka kwe dhi lombwele aapulakeni ye, okwe dhi lombwele ayehe, natse wo. Okehe omwiitaali oye onkalelo yaKalunga.

Egongalo IyaKristus oyo onkalelo yaKalunga He nOmwana nOmbepo Ondjapuki. Jesus sho kwe tu kulile muupika wasatana, okwe tu taamba notwa ningi aantu ye. Nongashi Omupsalmi ta simaneke esimano IyaKalunga, natse wo osho tu na okusimaneka esilohenda lyOmukulili gwetu sho kwe tu silohenda, sho kwa zile megulu lye nokwe ya muuyuni, a valwa, ngashi aantu ayehe haa valwa, e tu hepekelwa nokwe tu sile komushigakana molwetu. Otse otwa li tu na okuka ya mekano omolwoondjo dhetu.

Olye ta vulu okupikula nokunongela ohole ndjika yOmuwa nesilohenda lye? Aawe, kape na nando gumwe. Ano sho twa shashelwa ngeyi medhina lye mwene tu kale ngiini ando inatu gandja esimano lye noku mu iigandjela.

Omupsalmi sho ta ti: Ngaashi edhina lyoye, ongashi wo esimano lyoye tali ka ya sigo okomahulilo guuyuni. Natse wo

twakala ko kiilongo yetu yi ikalela, kokule nuukwakristus. Oye okwe tu sile ohenda shili, onke tu na oku mu simaneka.

Oohapu dhetu, iilonga yetu, omikalo dhetu, ayihe tu na oku yi simanekithitha Omukulili gwetu. Tu kaleni twi iyoolola muupagani nomomikalo dhawo, tse tu kaleni onkalelo ye, ha kala mutse. Nesiku tatu ka ilwa mo, Oye ne tu fale megulu lye, tu ke mu simanekele motempeli yuuyelele, aluheluhe.

(paOsoondaha)

## AANDOHOTOLA INAA PITIKWA OKUYA KUSUIDWES NOKULONGA MOWAMBO

Okwa tseyithwa kutya aandohotola yaali, Dr. Jarno Laine nosho wo Dr. Helene von Schantz mboka ya li ya longo nale kOnandjokwe inaa pitikwa we kEpagelo IyaSuid-Afrika okuya kuSuidwes nokulonga mOnandjokwe. Tashi ti aandohotola mbeyaka itaa vulu okugalukila mOwambo nokuyakula oshigwana shika. Dr. Laine okwa li a tegelelwa a tameke iilonga momwedhi gwajuni nokuli na Dr. Helene von Schantz omuSeptemba - ihe ngashingeyi sho itaaya vulu we okuya nkuka ope na owala oluhodhi olunene.

Ngashingeyi mOnandjokwe otamu tiwa ngaaka kutya oshipangelo itashi vulu we okutaamba aavu oyendji omolwoluhepo nduka lwaandohotola. Onkene ano aavu oyendji ye na okutuminwa koshipangelo oshinene shaShakati, ope ya ya kulwe nkwiya.

## Biskop Auala Fonds

Ombilive yomulongi Abednego Nghifikua, Eenhana, ndjoka kwa li e yi nyolele kuamushanga gwomumbisofi, tate Petrus Shipena, oya kundathanwa moshigongi shomumvo shaasitagongalo yongerki mOniipa, nomadhiladhilo gomuyo oga kolekwa kutya, oge shi okulongithwa. Ehuku lyayo olya li ngeyi:-

"Ndishi osha holoka kutya, aantu yomongerki yetu oya nyanyukwa noonkondo sho omumbisofi gwetu a galulilwa ishewe ukolele we. Ngame omadhiladhilo gandje inaga hulila owala mokunyanyukwa. Onda thaneka ando pu ningwe sha, shoka tashi holola enyanyu lyiilyo yongerki yetu moshinima shika. Onda dhiladhila ando ku totwe oshiketha "Biskop Auala Fonds." Ando kehe ngoka ta hambelele Kalunga molwealuko IyaDr. Auala, oku na ompito okutula mo moshiketha shoka patokolo lye mwene. Ondi inekela otatu ka mona oonakwiitula mo oyendji."

"limaliwa yomoshiketha shoka ando otayi ka kala ihe hayi longithwa sha tashi ka kwatha ongerki ayihe; tu tye nando okuputudhila omusitagongalo gumwe oshilonga shontumba mongerki."

"A. Nghifikua."

Ngele ope na omapulo gasha omolwasho nenge pe na ngoka e na ehalo lyokutula mo sha, onawa a tume manga kombelewangerki, shoka kape na manga eutho lyasha li ili moshinima shika.



Omusitagongalo omuwiliki mO-nayena Malakia Ntinda



Mokutaamba omutumwagwo-ngerki yetu Magdaleena Namalenga, ngoka a kala mei-longo kuSoomi omimvo 4 omumbisofi okwa tumbula epandulo, sho Ongerki yetu ya pewa omagano, ookuume

yomuSoomi sho ye tu putudhile omugundjuka ngoka gwtango a putudhila oshilonga shihikomwa mOngerki. Magdaleena a holola wo epandulo lye koshipala shaKalunga sho a mono ompito yokwiilonga nomolwomagalikaneno, nomolwashoka omadhiladhilo gEpagelongerki ga tsakanithwa kuKalunga.

## OMAGANO GEHAMBELELO

Omolvoshituthi shoovula 100, yaali oya gandja omagano gehambeleso ndyoka ye li dhimbulula moomwenyo dhawo, noye ga tumu kewilikongundu lyoshituthi shika.

L.A.Max naLahja Nhinda oya gandja .....R 4.00

Nima ya Nima okwa gandja ..... 0.30

Kalunga ne ya indjipalithile oshindji yo ya kale inaa hepa sha. Ngiika ngoye oto ti wa tokelwa? Aawe, natango otu na ethimbo lyokuholola ehambelelo lyetu. Tameka ashike nena.

## IYIMATI YOSHILONGA

Omadhiladhilo omanene oga li ngoka okwoopaleka ondjila ombwana-wa mokulonga omapya. Ihe moshinima shika omikalo dhuukulu woshigwana shika odha imbi noshishona showala sha ningwa. Iiyimati noomboga dhoshingolo odha tamekwa okweetwa mo, osho wo oshipululo shoka she eta elunduluko enene mokulonga omapya mOwambo. Onkambadhala yokutsika iihwa yiilugu noku yi longa, oyo owala inaayi pita. Opwa li wo euvaneko lyokudhika osikola yomapya mOngwediva, ihe



**Omukuluntutumwa, nale, V. Alho  
Elongelokumwe lyayinangerki  
nomwanangerki**

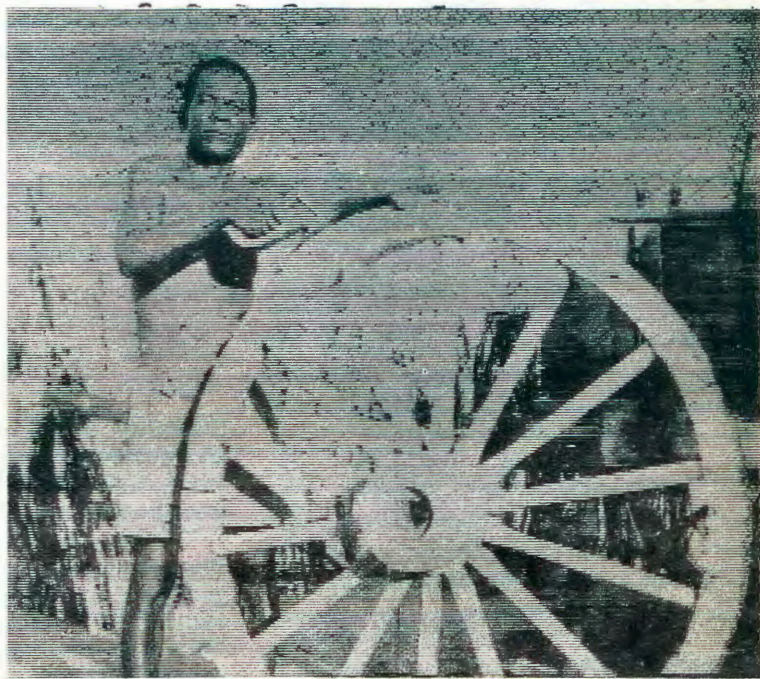
Ekoko lyongerki otali ulikwa kiilonga nokiiimpwiyu iipe mbyoka tayi taamba. Moshigongingerki sha gongalele mOkahao omwa li mwa leshwa omauvathano gelongelokumwe pokati kongerki yaElok nEhanganotumo lyaSoomi, nomadhiladhilo kutya opo omauvathano ngaka ga vule okulongithwa petameko lyomumvo nguka 1970. Shimwe shomomauvathano ngaka osho shoka, aatumwa ayehe taa longo mOngerki ndjika oyo ayeke mboka yi indilwa kongerki, noya ziminwa kEhanganotumo lyaSoomi. Omwa kwatelelwa mboka ya longo nale mpaka nenge mboka aape inaa kala shito mpaka. Shika oshilonga oshiye kongerki.

Omutumwa Vaino Simojoki ngoka a lele ethimbo ele Enongelo lyayakuligongalo mEngela, okwa ithanwa ishewe kEpangelongerki, opo a vule okutsikila oshilongatumo momapya gomuninginino, ngashi sha li tashi longwa kutate Toivo Pentikäinen. Tate Simojoki ota kala omutumba kuTsandi. Okwe tu etele omakundo taga ti ngeyi:-

“Otse aatumwa otatu shi tala kutya Kalunga okwa gamena oshigwana shika ethimbo ele uule woomvula 100. MuSoomi ngashingeyi omwa holoka omandhindhiliko tage tu tilitha. Ngiika esiku lyOmuwa li li popepi. Otaa pumbwa omagalikaneno geni. Otaye mu kundu unene.”



**Rev. Vaino Simojoki**



**Okugulu kwetemba**

etungo inali tsakanithwa. Osho wo pwa kala omadhiladhilo gokuhika iipa.

Kombinga yosikola yiilonga etumo lyaSoomi konyala li ninge oshindji, mOngwediva omwa kala omupepo, oshihongelo, okuhinga oshihauto, nAawambo oyendji aasamane naamati oyi ilongo miilonga mbyoka. Miilonga yaavalelwamo ngashi yoontungwa etumo olya gandja omukumo, nokekawho lyoosikola dhuugumbo opwa holoka epapudhuko enene miilonga yiikaha, nosha taneke nawa oshilonga.

Ongomugandji gwiilonga, Etumo nuunene ongerki yOwambokavango oyi shi okudhimbulukiwa moshinima shika, oshoka puyo Aawambo yeyovi limwe pamwe nomagumbo gawo oya longelelepo oshikwiila shawo shesiku kehe. Oshinima shika shiilonga osha kala shi na omauwana omanene gopaali nokuyeleka noompito dhilwe dha li dhe ya egulukila.

Shotango: ondjambi poompito odhindji ohayi zi miimaliwa yAawambo yo yene notayi futu Aawambo ooyakwawo. Noshitiyali, komukalo nguka inaku kala uupyakadhi monkalathano nomomikalo we etwa ketembu lyiilonga andola.

Iiyimati yoshilonga shetumo otayi monika mokukalamwenyo akuhe. Pethimbo lyuupagani, uugeyi, iifundja omangwandjagulathano nuumbanda oya li tayi pangele. Aawambo oya tilathana, omukwiilongo kehe, na kale ogwoludhi luni, okwa talika omutondi naanaa. Aalumentu inaa iiyendela noinaa enda inaa homata. Osho wo aakiintu inaa iyendela, to hala okutya, esiku kehe aantu oya hingilathana iita.

Shika osha lundululwa kevangeli lyombili nolyokumanga kumwe, etumwalaka lyohole yopakalunga. Epangelo sho lya tameke okupangela mpaka, tashi ti: konima yEtumo sho lya longo etata lyethelemumvo, oshigwana osha adhika nale sha ninga oshigwana shombili.

Uukriste owe eta wo elunduluko mokukalamwenyo kwondjokana yOshiwambo, Peha lyokuhokana aakulukadhi oyendji, omadhiladhilo omape oga holoka kutya, omulumentu gumwe ota kala nomukiintu gumwe ashike. Elunduluko ndika kAawambo olya li edhigu noonkondo, ihe uukriste owa sindana, nokuli ngashingeyi oye na ashike omukiintu gumwe, noyendji oyu uvite ohoni ngele ye na aakiintu oyendji. Mpaka opwa monika omadhiladhilo omape gelago lyomondjokana.

Etumo lyaSoomi, omolwomukanka gwelago lyOmbimbeli, olya tameke wo okukondjitha iikunwa. Naashika osha li oshidhigu nesindano o-

## SHE HANGANOTUMO LYASOOMI

Iya fa kali lwetike manga, ihe shono sha yela osho shoka kutya, Aawambo mboka taa nu ngashingeyi, otaye shi ningi neiuvo inaali yela. Oyu uvite naana oye na ngashingeyi omadhiladhilo gopakriste, noyendji she ya kwatha oku shi lalakanena.

Elunduluko enene twe li mono Etumo mokukalamwenyo kwAawambo, osho shoka Ongerki sho ya tameke okwiilela yo yene. Miilyo yayo mbyoka konyala yi li po etata lyoshigwana ashihe, osha ningi oshinima shi na oonkondo, shoka epangelo lyoshilongo kehe nolyAatiliganenge na oku shi simaneka.

Hamoluukwambepo wayo ashike, nando u li po uunene tuu shili, ihe Ongerki ndjika oyi na uukumwe woshigwana shika ashihe. Mboka ya tseyana nawa Aaluudhe otaa koneke kutya, oshigwana shika momayooloko gasho, oshi na ondjuulukwe onene yokukala kumwe nokukokeka ombepo yawo. Epangelo lyOngerki nando Iya li po eshona manga, osha li elago enene Aawambo ye na Ongerki yawo yene, moka taa taamba iilonga yi ili noyi ili, noye na emanguluko okweenditha eilelo lyawo.

Elunduluko momuthika gwomukiintu gOmuwambo, osho ontopolwa tayi iinyolelwa. Pamithigululwakalo dhoshipagani, omukiintu Omuwambo omukwathi ashike gwomulumentu gwe, nenge ongoshilongitho showala shomepya nenge shomegumbo. Omolwashika eputuko lyomukiintu olya kala pevi nonkoondo. Nando elongo lyopakriste otali longo omukiintu a vulike komulumentu gwe, otali longo wo uuthike pamwe we nomulumentu gwe. Shika osha yelekelwa wo nomOwambo, uuna aakadhona naakulukadhi ya pewa eputudho ketumo naanaa ngashi aalumentu wo ye li pewa. Nomoluusita nokuya kwokondhalate, aalumentu inaa mona we oosikola, neputuko lyaakiintu ngashingeyi olya ya pombanda li vule lyaalumentu. Oshikumitha osho shoka kutya, omukulukadhi Omuwambo omukriste ota vulu okukala megumbo lye awike mohole nomu-



Kaasita yongerki, aatumwa, aagundjuka nooitaali ayehe, omusitagongalo Mika Shifula, Ongwediva ote ya halele eyambeko lyaKalunga moshituthihambelelo. Ota ti, "Ondi'li pethimbo ndyo lya lombwelwa Petrus." Sho wa li omugundjuka, owi izaleke nowa yi nkoka wa hala, ihe ngele to koko gulwe te ku zaleke....." Oku li nawa ngashingeyi.

## Oudjuu wovapaani

Oshili oshihakulifi komunhu ngenge u li poima noto hepaululilwa omunhu a li ta ende nondjila ndele taku tiwa a puka nokwa kana. Onghee ekano ngenge otali hakulifa omunhu, kombinga yetu omunyasha omukwetu ou udite ngahelepi eshi to udifilwa luhapu elaka tali hokolola ovanhu vakweni ovannyasha, ovakulupe nounona ve li momilaulu va teelela okukana?

Eenghono detu odixupi okulonga nokuya metumo nokuhanga apa pe na ovo va hepa ekwafo. Ndelenee Omwene wetu okwe tu fiila elaka liwa "Indileni Omwene weteyo a tume ovalongi meteyo laye."

Ongula yOsoondaha oyo ya longekidilwa ongalo yetumo ino i hepeka vali nokukonga etatapeni, osheshi itali kwafa sha, ndele inda monduda yoye idila po oshivelo ndele to ilikana, opo Omwene a kwate omake aavo ve na sha, opo va ete shihapu sha wana kongulu yaye. Eilikano otali dulu ounghendabala voye aveshe u va kwete. Ino efa ovamwanyoko va fye ino va udifila ou e va kulila. Tu kune ombuto ei yomwenyo waalushe, nande tapa kala omaudjuu tu ka hafele eteyo.

Ndevaama N. Ndevaetela



Osho Aawambo ya li yi igamene ngaaka kaantu ooyakwawo noki likama.



Egumbo lyopakriste lyu uvite elago

## EKUNDO KEPANGELONGERKI

Otandi pandula Kalunga molwEpangelongerki lyetu sho lya li lya pendje ompito yokwiilonga. Kalunga kaNangombe okwa kwatha ndje mokwiilonga kwandje sigo a thikitha ndje pehulilo lyeilongo lyandje. Oshili Kalunga oku na omwenyo nota pangele; edhina lye nali hambelelwe, lyo li simanekwe. Omakonakono gandje agehe onde ga mana. Oshinyolwa shandje "Eputudho lyuusita mongerki Owambokavango 1922-1968" onde shi mana.

Aakonakoni yoshinyolwa shika shandje sho ye shi lesa noye shi konakona oya pe ndje musho onomola yopokati (cum laude approbatur). Esiku eti-28.5.1970 onda pewa ihe onkatu muuteologi no sho wo uumasteri. Kalunga na hambelelwe.

Nampongo ngele oku na aantu, ongame nezimo lyandje otatu ka thikama ko huka esiku eti-30.6. 1970.

I. Kristof Shuuya

dhiginini, noku shi, a gwana okutonatela eputuko alihe lyegumbo lye.

Shito okwa kala oshilonga shimwe ashike shomukiintu mokukalamwe-nyo kwawo mOwambo, osho elugo, ihe etumo olye ya egululile oshiye-lo oshipe, sho taa vulu okuninga alongisikola, aapangi, nenge miilonga yilwe ngashi yokunyanyangidha. Naamboka kaye na iilonga ya tya ngeyi, otaa vulu okutaneka omaliko gawo nokutunga oontungwa.

Mongerki oye na einyengo enene miilonga ngashi mokulonga olwiimbo, okuwilika oongundumbimbeli, niigongi yaagundjuka, oosikola dhosoondaha nosho tuu. Oyo aakuluntu yomagongalo, aadiakoni, otaa kala iilyo moshigongingerki, nopwa li ethimbo limwe omuyevangeliste omukiintu. Shika otashi ulike Etumo lyaSoomi nkene lya ya mo moshini-ma shika, oshoka aakiintu muSoomi ya manguluka ye vule palwe.

Aatumwa olwindji oya mono ompito uule woomvula dhontumba okukala momudhingoloko gwoshigwana shoka inaaye shi tseya nenge pamwe ye shi tseya ashike kashona kowala, noyendji oya longitha ompito yokugongela iikonakonwa ya simana. Onkene tashi uvika ko nawa kutya, ngashi ondjokonona yoshigwana pamwe nelaka oya yambapalekwa kuyo. Ondjokonona yoshigwana ndjoka ya gongelwa kuRev. August Pettinen oya nyanyangidhwa nale nokuli. Manga ndjoka ya gongelwa kuDr. Martin Rautanen naRev. Liljeblad yi li natango melongekidho. Omayeletumbulo gOshiwambo 2,025, melongekidho lyameme Helmi Haapanen olya pwa nale.

Manga Aandowishi nAaingilisa (aatumwa) yi ipyakidhila nelaka lyOshikwanyama, yo aatumwa yaAasoomi otaa longo Oshindonga. Omambo ogendji gogramatika gOshindonga moshimpwiyu shomusamane Toivo Tirronen oga holoka nale, nokambo kelaka mOshiafrikaansa oka pwa. Ishewe okwa ningwa wo okambo kiitya.



E. Närhi



Nestor Wäänänen

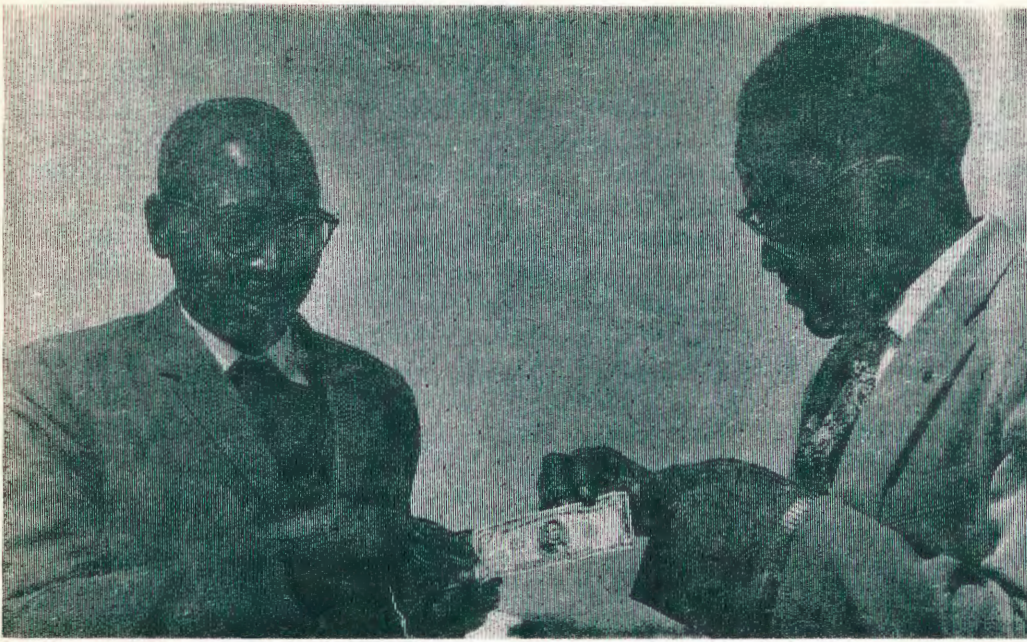


Uno Paunu

Etumo lyaSoomi naatumwa yalyo oya kala yi ikeelela aluhe muupolitika nowino. Omukalo nguka ogwa ziminwa wo kepangelo, notaye shi simanekelwa sho ya vulu okutsikila oshilonga shawo, nuuna oshilongo shawo sha li sha thikamenathana noRepublika yaS.A. Ihe oshilonga shetumo osha li shi na wo iiyimati muupolitika mbyoka yi iyeta yo yene, iiyimati mbyoka tatu vulu okutumbula molupandu nomenyanyu.

Shotango shomiikwawo otwe shi tumbula nale kutya: ombili ndjoka tayi pangele moshilongo shika ye etwa ketumwalaka lyenyanyu. Ngashi tu li po Etumo lyopaLuther, osho wo tatu tula omuthindo koshipango nomoonkondo ndhoka Kalunga e dhi gandja kepangelo.

Esindano enenenene ndyoka tali ulike kutya, Aasoomi inaa ndopa mokukala aadhiginini yombili mpaka olyo ndyoka lya ningwa poshipo-tha shAaherero. Rev. A. Savola pamwe naalongi naye, oye shi vulikitha sigo oponkantu yahugunina okukeelela Aawambo moshipotha.



Aaluudhe, ngashingeyi ya tameke okwiitala oyo oshigwana shimwe. Omuntu to hala oku tya mpoka pwa popiwa nale kutya, Aandonga, Aakwanyama, Aakwambi nenge iilongo yilwe, ngashingeyi otaku tumbulwa oshinima shimwe ashike **Aawambo**. Ando kwa li hashilonga shetumo, ando shika inashi vulika nando.

Nge tatu dhiladhila iiyimati yiilonga yi ili noyi ili yoshilonga shetumo mOwambo, nokudhimbulukwa naanaa nkene yo yi li po iihohela ashike yilwe, nena otu shi wo okuzimina pamwe nomukwaniilwa David kutya:

“Ongame olye noshigwana shandje tu ulike okuhala kwetu, oshoka otse oondjendi naakwiilongo koshipala shoye, ongashi ootate ya kala. Omuwa, Kalunga ketu, uuyamba auhe mbuka owa zi moshikaha shoye naayihe oyoye. Onke Kalunga ketu, otatu ku hambelele nokusimaneka edhina lyoye lya simana.”

Omuwaniilwa David okwa dhiladhila omwana Salomo ethimbo ndiyaka nokwa galikana, opo a pewe omutima omwaanawa okudhiginina omahokololo ge niipango ye nokutunganga egumbo lyaKalunga ndyoka David kwa li a longekidha.

Otse Etumo lyaSoomi otu na omadhiladhilo ga fa ngoka komwanangerki yEvangeli paLuther mOwambo nOkavango, nehalelo ewanawa lyokomitima, nge taa pewa natango ethimbo lyokukala monyama, iilonga yoshilonga shawo yi indjipale noyi simane shi vule nale omolwesimano enene lyOmuwa gwetu. “Oshoka muye, nomolwe, ayihe oya shi-twa noyi li ko. Esimano olye, aluheluhe.”



**Omusitagongalo Festus Ambinga, Oniimwandi, ota kundu aayenda yoshituthi shehambelelo naaleshi yO-mukwetu ta ti: “Aamwandje holathani ngashi Kristus kwa li e mu hoole.” Tatekulu Ambinga sho a te-kele ngashingeyi ote ende ye mwene.**



**Omusi Elias J. Pentti negumbo lye**

## ONGERKI NOLUHEPO

Ngiika iilyo oyindji momagongalo oya dhi-mbulula nale okweenda kashona kweyakulo lyopamwenyo kombinga yUulalelo Uuyapuki. Oshigongi shaasita yongerki shomumvo sha gongala mujuni osha li sha kundathana omaluhepo ogendji gongerki palutu nopamwenyo. Kombinga yompumbwe yomaviinu gUulalelo okwa hololwa ngeyi kutya; Omolwoompango nomautho noondjila dhehangano lyomaviinu ndhoka itaadhi tsakanithwa aluhe kongerki yetu, osha eta wo oluhepo lwa tya ngaaka mongerki. Ohenda onene oyi li mpoka sho oomwenyo dhooitaali otadhi nanga.

Shika kashi shi onkatu yahugunina, ongerki otayi kambadhala natango okuninga ookambadhala dhilwe yi tale ngele genongo taga fe tuu gongombe, opo oluhepo nduka lu kandulwe po.

Oshinima oshitiyali sha kwata ongerki yaKristus pothingo osho oluhepo lwiimaliwa. Inapa pita ethimbo ele sho ilgandjwa yaakwanegongalo ya li ya gwedhelwa nelalakano kutya uudhigu mbuka u kandulwe po, ihe inashi tya sha nando. Omadhina gaakriste ogu udha oongunga natango miinyangagongalo, omagano gomahambelelo nogomapandulo Kalunga sigo oompoka inaga holoka. limaliwa niilya niimuna noondjuhwa nomakunde mbyoka yi na ando okuyoololelwa Omuwa omumvo kehe, inayi falwa ko kongulu ye.

Shika osha fala sigo oompoka aayevangeliste momagongalo naalongi yi ili noyi ili ya thige po oshilonga shika, opo ya ka konge oondjambi dhawo. liyimati yaashika oyo mbyoka sho oomwenyo dhaakriste otadhi talala kashona nakashona, oshoka kape na we uupyu wevangeli. Aantu otaa thiki poshikako shoka ya dhimbwe Omushiti gwawo naa shoka te ya pula. Osho iinima oyindji tayi ende tayi tsikilathana ngeyi sigo ....

Shika otashi tu thiminike tu shune kOmbimbeli tu yi pule shoka twe shi kanitha mokukalamwenyo kwetu, nonkene tatu shi adha ishewe. Olye ta vulu okugongela sha ngele Kalunga ine mu pa? Sha gwana metiti omukuluntu e shi gandja.

**Efano pombanda: limaliwa yoshiyAmerika nOshisoomi mbyoka ya zi mongalo oya li ya hili uotalambambi woyendji. Rev. Matias Ngipandulua naRev. Armas Amukugo, otaa konakona odolar yoshiyAmerika.**

# “OMUSIKA YETULUMUKO”



**Omulongi Paavo Hasheela**, okwa longa efimbo lile oshilonga shoulongi, nde okwa tambula vali oshilonga eshi shipe shokutuma eendaka momhepo. Vahapu va pwilikina ondaka yaye iwa moradio.

Opolokalama ei “MUSIKA YETULUMUKO” oyo imwe yomepolokalama hadi udika mOradio Owambo. Oho i udu mOradio yoye okudja 8.30-9.30 ongula keshe yOsoondaha. Opolokalama ei yomusika aishe oyo tai wapalele efiku letulumuko. Muyo ohamu leshwa yo eevelise domOmbibeli. Oya diladililwa yo omakundo. Oto dulu okukunda ovo wa hala u kunde nomakundo taa wapalele efiku letulumuko. Oto dulu yo okukoleka ovaitaveli vakweni neendjovo domOmbibeli, ile omapukululo mawa e likwatelela kOmbibeli.

Fiyo opapa omakundo ohaa ningwa ashike komulongekidi wopolokalama ei. Eshi osha dja apa eshi ihaku monika eembilive dovapwilikini ovo tava tu ovaitaveli vakwao omukumo ile tava tumine omakundo komaongalo avo, mefiku letulumuko.

Keshe omupwilikini wOradio Owambo, ota dulu okuninga sha ko-

mbinga yopolokalama ei. Oto dulu okushanga eembilive tadi pandula osho wa mona mo ile to penge oushima osho ino panda. Eembilive adishe otadi yakulwa nehafo.

Osho to tu pe, ohatu ke shi tumamomhepo notashi ka udika kuvahapu keembinga neembinga no-sho ngaha yo u na omhito yokuholola Kristus moshilongo ashishe. Ovaitaveli inamu xutwifa omhito ei. Longifeni yo omhito ei okuhokololela vakweni Kristus.

Nge ou na okakola oto dulu yo oku tu tumina omakundo oye nondaka yoye mwene i li mokapaya (tipe). Ino tuma omaimbilo. Nge to kwata ondaka, lukila okakola koye konhapo yo 15 r.p.m. ile 7 1/2 r.p.m. Nge twa kufamo ondaka yoye, hatu ku shunifile okapaya koye. Ito futu sha ove ito futwa sha.

Ondjukifi yetu oyei. “OMUSIKA YETULUMUKO” (S.A.B.G.) P/B 13243, WINDHOEK. **Paavo Hasheela**

## ONDI SHI OKU YI LONGA

Kombinga yomashina gokuhondja, yoradio ngele oya yonuka, ondi shi oku yi longa. Ngoka u na eshina lyokuhondja lya yonuka otandi vulu oku li pangela nawa. Ngele lya za iitenda yimwe ohandi yi tula mo. Ondi na iitenda yoludhi kehe lweshina lyokuhondja, nge nde li pangele otali ka hondja ngashi shito. Ngele oto ti omutoto, yelekela u tale u li ete. Ngoka u li popepi oto vulu okupukululwa paandjetu, naangoka u li kokule tumina ndje ombapila opo ndi ye kaandjeni e tatu uvathana nawa ihe.

Tomas Nangombe, Ombata, Eheke.



**Tomas Nangombe**

## OSHITAYINGERKI SHANDONGA

1. Wa yelele uyelele  
Muupagani thoko  
Tse twa kala mo  
Wa yala mutse uyelele  
Tu lyeni ngeyi muyelele  
koor: Ja zi kokulekule  
Aatumwa yetu mbo  
Oshike ye eta mbo  
Elaka etoye ndyo lyevangeli  
Tu ninge aavangeli
2. Jesus mwene uyelele  
We ya mOndonga wo  
Tse twa kala mo  
Goyi lyajuli ndyo  
MOmandongo uyelele wa yelele  
koor: Ya zi kokule.....
3. Siku lyonena etoye ndyo  
Omimvothele sho dha pi tipo  
Elaka etoye sho twa etelwa  
Tuhambeeleni Omuwa  
Mwenyo gwaaluhe twa etelwa  
Ekulilo lya pwa twa longelwa  
Tu nyanyukilweni omusindani  
Omuwa gwetu omusindani.

## YA TEGITHWA MANGA

Oshipangelo shaNgela shoka sha li sha taamba nehwo enene omusitagongalo Malakia Hauuanga ongomuyakuli gwasho, osha tegithwa manga neifupipiko sho tate Malakia a akukilwa kuuweheme manga nokuli ando ngongula kushe ya ninge oshituthi she-taambo lye. Tate Malakia okwa falwa mbalambala koshipangelo kOshakati, nokonima Aashakati kaya li we ye shi lwetele omutumba oye mu tumu kOvenduka.

Omatengeneko otaga ti kutya, tate Malakia sho a gwile kokapapaka nale mOshomeya, pamwe a gumwa koshiponga shoka koshitishanathigo. Omutoto hagu zi kOvenduka otagu tu talaleke kutya ota hwepopala po esiku kehe nope na etegameno a tsikile nantango oshilonga she moshipangelo mEngela. Mu galikanena.

## OMUKWETU

Oshifo shOngerki onkwaevangeli paLuther yomOwambokavango  
Die Tydskrif van die Evangeliese Lutherse Ovambokavangokerk  
Oha zi mOniipa,  
Omukuluntu gwoshifo/Hoofredakteur Omumbisofi Dr. Leonard Auala,  
Amushanga / redakteur Sebulon Ekandjo  
Ondando komumvo mOwambo 70c kUushimba nOkavango 90c  
Kombanda yomafuta R1.30.  
Oondando nomambestelo naga tumwe kOmukwetu,  
Oniipa, P/B. 2015 Ondangwa, S. W. A.  
Oshinyolwa shuule  
wondeimi 1 otashi futilwa R1.00  
oondeimi 2 -"- -"- R1.90  
oondeimi 3 -"- -"- R2.70  
oondeimi 4 -"- -"- R3.40  
oondeimi 5 -"- -"- R5.00  
Oto vulu okutuma efano lyaashoka wa hala shi tseyithwe nomatumbulo wo gasha ngele ope na.

The Finnish Mission Press Oniipa  
P/B 2015 Ondangwa S. W. A.