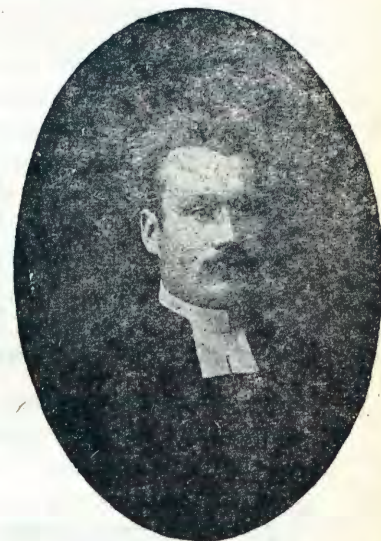


OMUKWETU



Omwene nata-ngo kwafenge

Wa indila nale u fike moshivilo eshi shongerki. Paife Kalunga okwe ku yeululila nee omhito ei inai monika kuvahapu. Oshike nee to ka ninga mo? Eepulanda doye odi na omalalakano a tya ngaheleli? Shiimba oto pumbwa natango eilikano eli; "Natango Omwene kwafenge."

Oshivilo osha kula unene, shi yadi ovanhu va fimana ile inava fimana, ovakulunhu nounona, vokokule novopopepi, Ovalaule nOvatilyaane. Membwilikita li fike apa oto pulwa shihapu nee sheenghedi doye, sheendunge doye, sheitavelo loye, shounhu woye u limonikife kutya ove omunhu mokupopya nomeengeda doye.

Dimbulukwa kutya, enota otali ka kala shiimba enene, na vahapu shiimba tave ke litalaleka mo, opo vati va ye mokati kovanhu ve lwete ko. Panghedi ei vahapu opo nee tava ka kanifila onghatu younhu opo. Haave mwene to ke limona ndelenee vakweni ove ku lwete ashike.

Lungama ovaenda ngenge tava ka shuna vehe ku twaalele momupopyo mwii. Okulifimaneka ove mwene osho yo okufimanekifa oshiwana shoye. Okulihumbata nawa kwoye, osho eameno loye koiponga nokodino, nde osho eameno yo lovamwanyoko.

Elifimaneko kali fi efeitatalalo. Omesho oye naa pashuke u mone keshe umwe a pumbwa ekwafo, ove u tale oto mu kwafa ngahelipi. Hano kala we lilongekida alushe. Konga ouwa wawakweni komesho yokukonga tete woye. Eyakulo eli otali ka kala lokafimbo kaxupi ndele litula mo neenghono, hamolovanhu, ndelenee osho ehalo laKalunga e li hala kufye. Ashishe eshi shi twaalela koshivilo, shi punikwe mo-woye.

Omumbisofi Dr.Leonard Auala okwa taamba oondelekelama mbali dhomeendelelo tadhi koleke elunduluko lyoshigongi oshititano shongongahangano yaakwaLuther shoka sha li shi na okugongala muBrazil, Amerika.

Oshigongi shika tashi tameke eti-14.7.70, oshi ipulwa ethimbo ele ngele tashi vulu tuu shili okugongala moshilongo sha nika ekuyunguto lyuupolitika, sigo nomanga nokuli ku na omwedhi gumwe aguke oshigongi shi tameke, epulo ndika olya kundathana noonkondo sigo lwahugunina kwa thikwa metokolo shi lundulukile palwe. Ano ngashingeyi otashi ka kala muSwetserland moka mu na ombelwa onene yongongahangano ndjika.

Shika osha gandja ishewe elongekidho epe lyoopasport kiilyo yOngerki yetu opo dhi longekidhilwe ishewe kuSwetserland, hakuAmerika we. Ngiika shika oshishona noku shi yeleka nongerki yomuBrazil ndjoka ya adhika ya taamba elongekidho lyegongi ndyoka nokuli uule woomvula dhi vule ndatu. Oya kanitha oshindji shili. Otatu inekele natango Omuwa mwene gwOngerki taka enditha ayihe nawa.



Egumbo Iya Kaipiainen

Onghundana ya dja muPaulinum

Amushe mwa fa mwe shi shiiva nale nokuli kutya, omuhongi Urho Poikolainen (Mutyoty) neumbo laye, okwa shuna nale oudwaali kuSoomi. Okushuna kwaye okwe tu fiila omhumbwe yomuhongi muPaulinum. Ndele Kalunga a fila oshisho eemhumbwe detu. Ponhele yomuhongi Poikolainen otwa tuminwa kEhanganotumo laSoomi ovanyasha: omufita Juhani (Johannes) Kaipiainen naefolo laye, omuteolohi Sirkku Kaipiainen. Juhani Kaipiainen okwa mana elihongo laye louteolohi modula 1964 nomo a yapulilwa oufita. Efolo S. Kaipiainen a mana elihongo laye modula 1966. Aveshe ove lihonga mouniversiti yaHelsinki muSoomi.

Juhani Kaipiainen eshi a ninga omufita, okwa kala omufitakwafi meongalo lomoshilando Pieksämäki eedula mbali. Konima va ya koshilando Juvaskylä, oko Juhani a kala omufita wovalihongi vomeeshkundofikola novomuuniveristi, naefolo laye okwa li omuyakuli meongalo limwe lomoshilando tuu osho Juvaskylä. Naako yo ova longo ko eedula mbali.

Modula 1968, ova hovela ofikola yEtumo muHelsinki. Eshi va pita, ova tumwa kuIngiland, oko va kala etata lomudo okulihonga Oshingilisha. Konima yefimbo olo, va alukila kuSoomi nova punikilwa oshilonga shoutumwa komuwilikitumi Alpo Hukka eti-21 laSeptem-

mba 1969. Mohani oyo tuu oyo va londa odila nova fika kuKaapstad. Oko va kala konyala oule weemwedi heyali, tave lihongo Oshiafrikaansa.

Pexulilo laApilili va fika muPaulinum nova hovela oilonga moshikakofikola oshitivali, okudja pehovele laMai. Aveshe otava yandje oilongwa. Ehafo letu linene eshi twa mona ovo ohatu humbata navo omutengi.-

Sirkku naJuhani, havo aveke ve uya. Ova etelela outumwa vatatu vanini tava monika mefano povakulunhu vavo, okudja kolumosho: Sari (5), Marjo (4) naTiina (1). Ponhele yofamili yaye, omuhongi ou Juhani Kaipiainen ote mu halele onye amushe ovakriste vOngerki yOwambokavango kutya, eshi tava yandje kovahongwa vetu muPaulinum, ovahongwa va dule oku shi fikifa kunye, sho shi ye nokawi. Juhani a pandjula Ombibeli yaye, nde te mu kundu ngaha: "Ndele Kalunga wetelelo ne mu yadife nehafo alishe nombili omeitavelo, opo mu kale mwa wana pombada elinekelelo okeenghono dOmhepo Iyapuki," (Rom.15:13).

Nafye yo ohatu halele Juhani Kaipiainen pamwe neumbo laye, eke laKalunga lefilonghenda li kale kombada yavo noli va wilike moilonga inene tave i longele Ongerki yetu. Unene omailikaneno etu otaa pumbiwa shili.-

A. Shejvali

Ove murongwa gwalye?

Joh. 1:45-51

Mosiruwo esi santantani vantu ntenene kapi va lidiva nare pokulimorora, awo ku litongonona va lidiwe. Esi nkedi zongwa. Ose vakriste ngano atu gwedako yuma melitongonono eli lyokulidiva. Tu li sanseke asi ose varongwa vaJesus.

Filippus age ana sanseke tupu oyo ana mono. Siwa unene ose varongwa vaJesus mokulitongonona tu li sanseke asi ose vaKristus. Mombudi zetu tu horore asi ngapi tuna kara varongwa.

Elihororo lyomurongwa lyapita tali moneka moyirugana. Ose ngano tu litongonone ngaJohannes Mukuhi Joh.1:23.

Vakwangali kwa hara kulitongonona asi ame nyame ngandi kezimo lyetu nimukwangadi. Sirugana somurongwa gwaJesus kusanseka erongoparu, kuzigida awo vahana kudiwa Jesus ipo va ya mu mone noku mu zuva.

Esi kwa si tu pa ose vakriste natuvenye kusanseka Jesus Kristus ige Muzowoli. Kovele vakriste vamwe tava litongonona asi, ame murongwa gwa muhongi ngandi, kapi si gwamusita, 1Kor. 3:4-6.

Ose murongi gwetu gumwe tupu, Kristus. Tu mu sanseke tu zigide wopeke kwendi. Moku si ninka kapi tatu hepa mafwaturu gomanzi. Owo tava wiza tava ya zuvu sosinzi kwa mwene. Tara si Natanael kuna kutumbura ngesi; "Rabbi, ove Muna gwaKarunga, ove ohompa gwaIsrael."

Ezuviso lyaFilippus nampili esupi lina kara nomulyo unene. "Ose tuna mono Jesus wiza oya tare." Ezigido eli ewa.

Tara ogu ga kuhara, tara Jesus, tara Muzowoli goge, tara ogu ga kufira kosilivindakano, tara omu va mu zerwira nonzo doge. Nampili wayipa omudona, vulika kezigido eli. Nampili wa humwa zerura meho goge o tare kogo va zerura koshilivindakano ove to paruka.

Owo tava dini ezigido eli awo kutupu erago, kutupu mwenyo. Tava gendi monzira zonomfa. Pura-kena hena rumwe ezigido eli nampili to gendi nonzira ezi zondona. Wiza oya tare, tara Jesus, Jesus nage a ku tare, a ku kwafe a ku fire nkenda. **Natanael Sirongo**

Efano kombanda aapagani ya gongalele pongulu yetumo omolwondjala.

OMPANGO YOSHITUTHI

Okangundutonateloshituthi oka fanekele oshituthihambeleso kOmandongo ompango ndjoka tayi lalakanene elandulathano nuuwanawa woshituthi ashihe. Ompango ndjoka oya kolekwa kewilikongundu lyoshituthi, yi kale ngashi tayi landula mpaka:

Kaayenda amuhe aasimanekwa yongerki yaELOK mboka mwa tokola okuthika kOmandongo nokukala moontanda omasiku gatatu, tu dhimbulukweni kutya oshituthi shika osho shotango mongerki yetu nomoshigwana shAawambo nAakavango. Oshituthi shika otashi ka kala wo sha hugunina, (pamwe okwaayehe nokuli) mboka ye na omwenyo ngashingeyi. Otu na enyanu nehambeleso sho moshituthi shika tamu kala aayenda ya simana, taa zi kondje yOwambo noKavango, ya hambelele pamwe natse omolu esilohenda lyaKalunga shoka lye shi longo miilongo mbika yaAawambo nAakavango muule wethimbo lyoomvula 100 dha tsakana. Onkee one amuhe mboka tamu ya, otamu indilwa mu simaneke Kalunga moshituthi shika. To indilwa wo u simanekithe oshigwana shoye, sho to landula elandulathano lyoshituthi mokweenda nomokukala kwoye moshituthi.

Elandulathano olyo ompango ya Kalunga ketu, oshoka okwa nyolwa: **"Kalunga ke shi kevundakano, aawe, Oye Kalunga kelandulathano."**

Oye li muSoomi

Aasita yane nomuyevangeliste Shiininge oye li ngashingeyi mu Soomi taa dhana iituthi namemengerki peha lyetu. Oyo tate Ismael Ninda, tatekulu David Shihepo, tate Gideon Muremi natate Gerson Max.

Oya adha ko nale tate Efraim Angula ngoka i ithanwa kehanganonyaanangeshefa muSoomi, naye wo omolwiituthi yetumo. Otaa ka kala ngiika ethimbo lyoomwedhi ntano nenge hamano nokuli. Otatu ya halele ukolele moondjenda dhawo dhesiku kehe.

Oya ya pamwe naagundjuka yaali yongerki yetu omusitagongalo Tomas Shivute pamwe nomukulukadhi gwe nokanona kawo komvula yimwe. Tate Tomas ota ka tsikila uuteologi muSoomi nameme Hilja Shivute ota ka kala meilongekidho lyoshilonga shosikola yOsoondaha. Kalunga ne ya pe oma-yele muayihe taye yi pumbwa.

Ombili ombwanawa opo yi kale moshituthi, naantu ya silwe nawa oshimpwiyu, opwa ithanwa aana-angeshefa yamwe, yi inekelelwa elongekidho lyiikulya okuyakula nayo aayenda ayehe yoshituthi, opo pwaa kale ngoka ta hepa, oshoka pokuma mpaka opwowala, kape niikulya.

Shaa ngoka ou na ihe ompito yokwiilandela iikulya, u lye. Ihe opo eyakulo li tsakane nuupu, pwaa kale omadhikathano, **otaku indilwa omunashituthi kehe, u etelele iilongitho yoye moka to tulilwa iikulya u lile mo. Ino dhimbwa ano okweetelela okayaha, okasindo, olufoloko noshimbele nokakopi koye kokunwina mo.**

Mboka ayeke ya zimininwa molugumbo lwoshituthi opo ya yakule aantu niikulya, oyo ayeke aana-angeshefa ye nompito ndjoka. Ikolitha inayi zimininwa yi etwe koshituthihambeleso shika. Osho wo omunangeshefa ngoka a zimininwa molugumbo, ina zimininwa okweetelela mukwawo monkwapa.

Ompango ndjika yoshituthi nelandulathano ndyoka omuntu te li pitula posheelo pondunda yomatseyitho, nali landulwe kukehe, ye omuntu na kambadhale a kale palyo. Ihe ngoka ti in'ingile elandulathano lye li ili, nota eta epiyagano nuukolokoshi, ota ka geelwa wo pampango yoshilongo naanaa ngashi aayonimpangoshilongo haa geelwa.



Omuyevangeliste Samuel Shiininge oye omuna gwomutumwa gwtango kOkavango omusamane Mateus Shiininge, omulongi, ngashingeyi a mana oondjenda. Tate Samuel okwa longa oomvula omulongo mokati kAadhimba nAandongona kEtunda.

Inashi yela manga kutya otashi ya pula ethimbo li thike peni.

I I Y I M A T I Y O S H I L O N G A T U M O



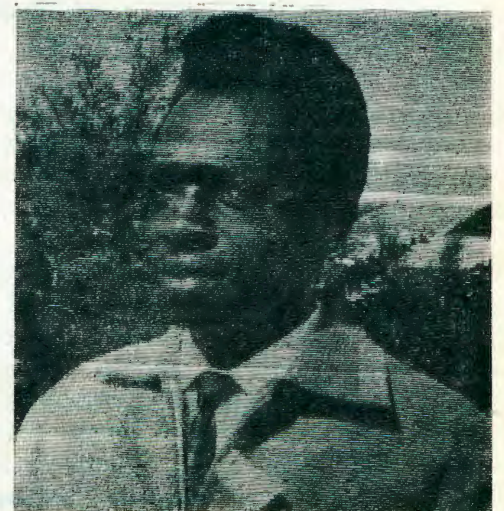
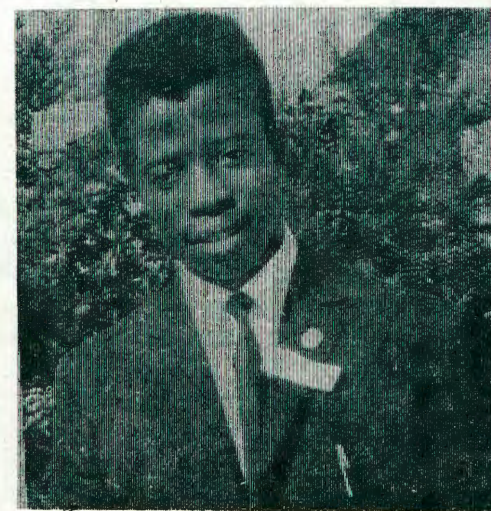
Pomathimbo nomathimbo aatumwa oya konakona evi niimeno yalyo.

Shoka sha ningwa 1965

- 13.8. Dr. Florin, oshilyo miilonga yongongahangano yaakwa Luther a talele po ongerki ya Elok.
- 27.8. Amushanga gwomapya gEtummo lyAasoomi muAfrika omusamane Olavi Ojamper a talele po wo ongerki.
- 27.9. Omusitagongalo Abisai Henok a hulitha oondjenda dhe mOnandjokwe.
 - Ewilikongundu lyosikola yokombanda mOshigambo lya hogololwa kEpangelongerki.
 - Aamatilika yotango yane mOshigambo ya nyola omakona-kono gawo noya piti nawa.



Omutaleli gwelongo lyOmbimbeli moosikola Rev. Hosea Nampala.



Ombinga yi shi okutalwa nesimaneko mehumo komeho lyelongo oyo ehanganano lyaaalongi aakriste ndyoka lya tamekwa wo nomOwambo, moosikola dhokombanda. Aktofel Uushona nalgnatius Haipingo oya li ya kala numvo moshigongi shehangano lyawo mOkahao.

Shono etumo lyaSoomi lye shi longo mOwambo itashi gwanene okutumbulwa mpaka ashike, ihe oshinima tashi pula embo lyasho ngaashi wo tatu ke li mona mbala moshituthi sho shene. Mpaka twa hala ashike okutumbula wo yimwe yomuyo pafupi ngaashi ya li ya etwa kuna-kusa Elias J. Pentti moshituthi shetumo shoovvula 99.

Iiyimati yoshilonga shetumo yo yene otayi monika sha yela unene moshinima shelongo nosheputudho. MOwambo omatumo galwe ga longo wo oshinima shika, ihe ombinga onene oyo ndjoka ya longwa ketumo lyaSoomi, nenge komwanangerki ongerki yOwambokavango.

Shono aatumwa ye shi lalakanene tango miilonga yawo osho okulonga aapagani ya tseye okulesha. Osho sha li ehalondjuulukwe lyawo ndyono ya li ye li tameke nokuli ethimbo ndiyaka manga ka kwa li sha shokuleshwa. Ihe omoluudhiginini wawo neidhidhimiko, oye shi tsakanitha.

Okupopya mokana omuntu oto hala okutya ando oshilyo kehe sho-miilyo yongerki mbyono yi vule 100,000, oshi shi okulesha, ihe muushili hasho nando. Ihe omwaalu gwoopelesenda ngoka hagu gandjwa gwa tseye okulesha omunene gu vule ngoka gwa tseyika muSuid-Afrika nenge muSuidwes.

Oshilonga inashi kala ashike shokulonga okulesha. Nonale manga epangelo inaali pangela omusindalongo ngoka gu na okulandulwa, lyo etumo olya adhika lya longo nale iilongwa yi ili noyi ili kAawambo oku ya pupalekela ondjila yawo yuukriste. Olwindji tu uvu taku tumbulwa kutya Aawambo aantu ye na omikalo omiwanawa, ihe mboka taa popi ngawo, itaa dhimbulukwa nande kutya osha zi muuwanawa woshilonga shetumo lyaSoomi.

Ano konima yoomvula omulongo dha piti manga epangelo inaali kutha ko oshilonga ashihe shoosikola momake getumo, okwa adhikile ku na oosikola dhongerki dhaanona ndhoka dha ziminwa kepangelo 90 mOwambo. Nongele taku gwedhwa oosikola dhomashasho nomakoleko otashi ti konyala aanona 20,000 oye li metonatelo lyaalongi aavalelwa mo 600. Osho wo taku gwedhwa natango aalongwa 800, aamati naakadhona mboka ya li moosikola dhaamati nomuugumbo, no inaa putudhilwa andola oshilonga shuulongi ashike, ihe oya pewa eputudho lya-kehe esiku. Okwa adhika natango ku na osikola yaapangi nambali dhaalongi pamaludhi gadho.

Mundhoka dhaalongi odha adhithwa omuthika gwadho ponkatu ya St.VI. nando kasha li eutho lyepangelo manga, ihe etumo olya kutha wo moongundu ndhoka yamwe mboka ya adhithwa oshikako shaJuniolo, naashonashona ya kwathwa okwiilonga sigo ando Matrika. Ihe omukalo kutya haatumwa we ya kala yi itula moshilonga shokulonga, ihe aavalelwa mo yo yene mboka ya putudhwa nawa, osha ulike kutya oshilonga shelongo osha holola nawa iiyimati yasho. Naampoka mOwambo

LYASOOMI MOWAMBO

to adha aanona taa longwa kAawambo ooyakwawo, metonatelo lyaatalisikola aavalelwamo, nena oto zimine kutya etumo lyaSoomi olya humitha nawa oshilonga sheputudho komeho mokati kaavalelwamo yo yene.



Eyakulo lyomiti mokati kaapagani olya longo oshilonga oshinene noshuhupitho lyoomwe-nyo dhawo, onkee shaa mpoka aatumwa ya yi po, oya faalele po wo omiti. Jesus mwene okwa longo aluhe oshilonga shika shokwaaludha omalutu nomwe-nyo. Mefano otamu monika mboka ya kalakokule niipangelo nenge nevangeli.

OSHILONGA SHETUMO OTASHI HOVELE PENI?

Ofye ovanyasha ovalihongi otu na ehalo nomukumo okulonga oshilonga shEtumo. Luhapu otwa ninga omaindilo etu, oku ka longa mEtumo, ndelenee otwa fa twa dimbwa ko eenhele dimwe ile onhele imwe oyo ya pumbwa yo ekwafo letu. Oyo omukunda wetu, eumbo letu, osheshi omwa pumbwa ekwafo lange. Fye ovanyasha otu na omaumbo a fya eewandaha, ihadi ningwa vali. Otu li momaumbo hamu longwa mOyoondaha. Ovanafikola have li xulu ashike eewandaha, keefikola, efudo ngenge le uya navo ova efa owandaha.

Otu na vali ovakulupe ve li pomikunda detu tava pumbwa ekwafo letu, ndelenee ihatu va longele sha. Omukwetu omunyasha, hovela oshilonga shetumo meumbo, momukunda nosho tuu poushiinda. Aishe ohatu i dulu ngenge hatu kongo ekwafo pomushiakano wa-Kristus, ou a hepekwa omolwetu. Omukumo ohatu u pewa ngaha:

“Aishe ohandi i dulu mu ou ta koleke nge,” Fil. 4: 13.

Omuhongi mOseminali
Tuyenikelao Valyange

Tu indileni ehalo lyOmuwa li gwanithwe wo nomutse

Ohatu tumbula olwindji kutya ehalo lyoye nali gwanithwe, notwa hala andola li gwanithwe shili mokati ketu. Oyendji otaa gwanitha ehalo lyawo yene. Inaa koneka ehalo lyOmuwa otali ti shike kuyo. Omupisalmi ota holola esimaneko lyehalo lyOmuwa sho ta ti: “Okugwanitha ehalo lyoye Omuwa okwo enyanyu lyandje.” Omimvo dhethele odha piti po oohapu dhaKalunga tadhi uvithilwa maantu, ihe sigo onena inadhi sinda omahalo goyendji, onke natu indile wo ehalo lyOmuwa li gwanithwe nokutse wo.

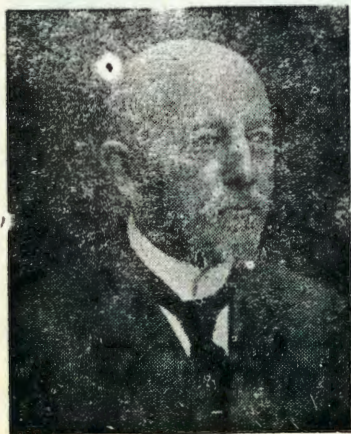
Taapopi Amoomo

Methimbo lyoshitine shethelemumvo, ompumbwe yokulonga elaka li-mwe lyomomalaka gepangelo sho ya tameke, nomOwambo wo, etumo lyaSoomi olya hogolola Oshiafrikaansa, omolwomatompelo gi ili nogi ili. Aatumwa tuu mboka nayo yene ya li kaye na ontseyo ya gwana melaka ndika, oyi itula mo noonkondo dhawo adhihe, nokekwa lyiimaliwa yetumo oya nyola okambo etameko lyOshiafrikaansa noye ka nyanyangidhitha. Nokuli oshifo shOshiafrikaansa “Ons vriend” osha kala wo ethimbo ele hashi topelelwa aalongi Aawambo opo yi idheule melaka. Ngashi to tseyo kutya oku na omatumo ogendji muSuid-Afrika nomuSuidwes ngoka inaaga hogolola elaka ndika, ihe ya kutha Oshiingilisa, tse etumo lyaSoomi, oshe tu yelesa ngashingeyi kutya ehogololo lyetu olya li mondjila.

Okumona uunene nuule womayooloko ngoka ga etwa po koshilonga sheputudho shehanganotumo lyaSoomi, omuntu owa li u na okweenda nomagumbo gAawambo u tale mboka inaa mona nando elongo lyasha, nenge inaa mona ekwatathano noshilonga shetumo. Oshilonga shetumo osho okukonakona okakololo kehe koshilongo.

Mekwatathano noshilonga shelongo, opwa kala wo oshilonga shelaka lyAawambo shoka sha ningwa kaatumwa Aasoomi. Osha popiwa nale kutya sho ya tameke elongo inaya adha ko sha shokulesha, ihe unene ka kwa li elaka. Kakele ashike koshipilili shomalaka shono sha kala wo shi na omayooloko. Osho sha li elalakano lyaatumwa Aandowishi nAa-Soomi ya ninge omalaka ngoka gaali Oshindonga nOshikwanyama, ga vule okunyolwa. Aatumwa yaSoomi oya nyanyangidhitha okambo melaka lyOshindonga, nale manga aashashwa yotango Aawambo inaa shashwa. Nembo lyEimbilo lya holoka wo manga egongalo lyotango inaali dhi-kwa. Nokuza tuu mpoka Eimbilo lya holoka li thike pOmaimbilo 200, ogendji gomugo ogopalongelokalunga, ihe omakwawo ogopaputudho ashike. Oshigwana shAawambo sha ningi wo oshileshi, ngashi tashi monika nomokutaamba oshifo shOmukwetu iifo 6000, omwedhi kehe ethimbo ndiyaka.

Nesimaneko enene otatu tumbula nokusimaneka Dr. Martin Rautanen



Omuhongi
August
Wulfhorst
(Ashipala)
a longo mU-
ukwanyama

pamwe naalongi pamwe naye ngoka a lundulula Embo Eyapuki Ombimbeli petameko lyethelemumvo 19. Oshilonga oshikwawo oshinene osho elundululo lyEtestamendi Ekulu mOshikwanyama. Elundululo lyOmbimbeli itali talikila ashike muunongo wokulonga, ihe otashi ti wo kutya onkatu onde mehumokomeho lyelaka ndyoka, sho tali talika lya koka.

Aalongi yetumo lyaSoomi aluhe oya kambadhala koonkondo dhawo adhihe okulongitha Oshiwambo mondjila nopauyamba washo, nokukumika wo Aawambo, yo yene ya kokithe elaka lyawo noye li gamene. Omokulundululo omambo noku ga tota, omambo gi ili nogi ili oga holoka ogendji, guuimbilo waanona, gomahistoli gongerki, goondjokana nogomaudhano gaanona. Pethimbo ndiyaka Omayeletumbulo gAawambo oga li opo ga holoka nEfatululo lyevangeli paMarkus.

Oshinima oshipe tashi nyanyudha mehumokomeho osho shoka sho aanyolimambo Aawambo ya tameke okuholoka. Omambo gomahokolo goparoman oga tameke okuholoka. Elaka ndika lyOshiwambo olya tameke okuputuka nomelongitho lyomafatulo giityafutiko. Omayeletumbulo giitya otaga holoka esiku kehe notaga kokitha ehumokomeho. Sigo konima yoomvula omulongo dha piti ngashingeyi edhiginino, etungo nekokitho lyelaka olya kala moshimpwiyu shaatumwa Aasoomi. Olwindji etumo olya kondjo epangelo li dhike wo tuu ando okangundu kelaka, ihe osima yowala. Oshoka etumo olya li lya hala naamboka taa longo mepangelo, okwiilonga elaka lyaavalelwamo ye shi tale oshinakugwanithwa shawo wo ngashi naana Aasoomi ye shi tala.

Kombinga yuukalinawa eyakulo lyetumo olya kala lya ziminwa papangelo. Opo ku kondjithwe oonganga dhoshipagani, uupangelogona owa dhikwa komahala nomahala ketumo neyakulo eshona lyaapangi olya tameke nkoka. Aavu ye vule 1,000 oya pangwa esiku kehe, konyala aavu 500 ohaa lala muupangelo mboka aapangi aavalelwa oya longwa opo ya kwathe oondohotola naapangi aatumwa Aasoomi. Ihe oyendji yomuyo oya li ye na okulonga meithikameno komikunda dhokokule. Ngoka e na owino woshilonga shika oye awike tu uvu ko



Aavalelwamo oya taamba mbala oshilonga sheyakulo lyegongalo momake gaatumwa.



Gumwe gwo-maatumwa ya landula ko Skoglund



Omupangi Leefa Shikongo, Eenhana o kwa monene yo omhito yokukala moshongalele shavo neudo.

Hileni lingula Onankali, ota dhibulutha natango ookuume kEtu-mo kutya, ngashi mwa li po mu hole oshilonga shEtu-mo, okuhola Aayelele noku ya yakula niikaha yeni, nomaliko geni, nomagalikane-no geni, osho wo natango dhigini-neni shili inamu loloka. Iita yaKalunga otayi kondjo pamwe niita yasatana. "Inamu etha oshilonga shEtu-mo shi kulupe," osho a ti ngeyi.

ekwatho lyomiti kAawambo muule womimvo dhi vule 90.

Osha yela nawa kutya oku na oyendji mboka taa pandula etumo omolwoomwenyo dhawo dha hupithwa. Aaposi yamwe oya monoko, iilema yimwe oye ende, yamwe ya aluka komalaria, yamwe ya li ye na okusa pokuvalwa oya hupithwa. Nokuli oondjokana odhindji odha mono omayambeko gaanona omolwomiti dhe ya kwatha.

Olwindji osha tumbulwa kutya oshipangelo shaNgela osha dhikwa ketumo pethimbo uuvu wiivalitho wa li u na okukomba po oshigwana ashike shUukwanyama, ihe oya hupithwa. Eso lyuunona olya shonopala wo molwoshilonga shetumo, noshigwana shAawambo otashi tana ngashingeyi. Eso mokati kuunona inali fupipala ashike sho uunona wa pangwa nawa, ihe naashoka wo uukwanambwiyu ihaau dhipagwa we, noothigwa ohadhi mono esiloshimpwiyu lyopakriste. Na ishewe, aakulu-



Esiloshimpwiyu lyuunona olya kala ombinga ya simana moshilonga shuupangi

kadhi oyendji oya longwa okusila uunona wawo oshimpwiyu manga inaa ya moondjokana. Ngiika iiyimati yoshilonga shetumo otayi monika sha yela moshinima shuukalinawa.

Uuna omagumbo otaga kombwa, oonguwo, iiyaha noontungwa noosindo nomaluko otayi yogwa nawa. Oondhi, oomwe noombuku otayi kondjithwa aluhe, naakriste Aawambo yo yene ya kala nesimaneko ewanawa, nosha humitha elago lyoshilongo shawo komeho. Ayihe mbika oye yi iilongo peni ngele haketumo?

Etumo lyaSoomi inali ya mpaka okukonga iimaliwa, ihe nando ongeyi, oshilonga shalyo oshe eta iiyimati nomiilikolomwa, hamolwalyo lyene, ihe omoluwanawa woshigwana. Mpoka epangelo tali monika ngashingeyi tali gandja noonkondo omeya niyenditho, tayi endithwa nawa itashi ka dhimbitha nando kutya Etumo lyaSoomi olyo omulogindjila gwotango moshilonga shika, nolyo lya hupitha omithima odhindji. Aatumwa ngashi ye endebele okugandja ekwatho kaavu, osho wo inaa kwatakwata okukwatha mboka taa si enota, noluhopo mevi ndika. Momathimbo nomathimbo oya dhiladhila nkene ya kwathe ngiini okwopaleka eliko lyAawambo.



Aapangi ye vule 70 oya li ya gongalele moshigongi shawo shomumvo mOnandjokwe eti-4 sigo 8. 5. 70, moka ya kundathana omaudhigu gi ili nogi ili gomiilonga yawo. Oya kala wo ye na ootundi dhomaidhimbulukitho nodhokutala Ombimbeli shoka tayi ti kuyo. Okukonakona onkalathano yaantu naantu muuyeleele woohapu dha Kalunga.

Waa pandula noyaka

Otse aagundjuka yomOmukuyugwemanya, otatu gandja omalupandu getu kaamwaameme mbaka: kAashiindiema, mewiliko lya M.A. Neshuku osho wo kAalindili mewiliko lya J.Madhiya. Iikwatha yeni mwe yi tu tumine oya thika kutse.

Tangi unene. Omakundo geni,
Eps. 100. S. Elago



Pokati kootundi aalongi oya kala ye na uthimbo wokuvululukwa po.

To ilongekidha tuu?

Sha mana omumvo omasiku, ye Omukwanyama gumwe okwa tile kutya: "Eedula otadi likweya ko," hinga no-shituthi shetu nashi ka ninga ngaa omahepu gowala. Ashike inandi hala u ye ko inaandi ku londodha nande. Kokuma otaku ka kala iinima iivanawa tayi talwa yo tayi pulakenwa, noyindji to ka hala oku yi ilikolela. Ano uumaliwa wajuni u kwata nawa, opo waa kiilye ominwe.

Mpaka otu na po okambo kotango, ABD. melaka tali ku kutula, ihe lwa-huginina moku ka lesa omwenyo gwoye otagu ende. Dhiladhila nawa, okambo oka nyanyangidhwa ashike konima yoomvula hamano aatumwa sho ya thiki mpaka mOwambo. Ito shi uvu ko ngiika nawa oshoka ou na ngashingeyi omambo ogendji ga nyolwa mOshiwambo. Ihe uuna ka kwa li elaka, ka kwa li eutho lyomupopyo, shila oshipilili shiikwelengi tashi uvika owala, omo aamati yaKalunga ya tungu olupe lwelaka moka, li vule okuleshwa, nevangeli li uvike ko nuupu.

Ano okambo nkaka otaka monika kOstora yOmambo notaka ka monika ishewe kOmandongo, molupe lwako ngashi naanaa ka li 1876, inamu kuthwa sha, mo inamu gwedhwa sha, shila okafatululo kowala okafupi ke li kepeko. Elalakano u ki ilandele hakwii-longa ando okulesha, ihe u kale u na uthiga womambo gongerki gotango. Ai, ongunga yetu komusamane Pietari Kurvinen otatu yi futu na shike sho kwa li e tu iyambele moshilonga shi thike mpaka? Omambo galwe wo otaga ka monika nkoka. Ngashi embo lyehistori, Kalunga ngele ta enditha omalongekidho goshituthi ndongo twa thiki mo.

"...notandi mu pe evululuko."

Ngashi oshipalanyolo tashi ulike, osho naanaa sha li po elalakano lyoshigongi shaalongi yomUukwambi shoka sha gongalele eti-17-19.3. 1970, muElim.

Aalongi ye vule ethele limwe oya li ya zi koombinga noombinga dhoshilongo shaElim ya vululukwe poompadhi dhaKalunga. Ootundimbimbeli nokukundathana omaudhigu gomoshilonga oya li iinene-nima moshigongi shika. Oshigongi osha talelwa po kaayenda ya simana ngashi amushanga gweputudho lyopakriste Rev. Matti Seppälä, omukuluntutumwa Rev. Mikko Ihämäki, osho wo meme Saija Kyrönseppä nomutaleli gwelongo lyOmbimbeli moosikola dhoshigwana Rev. Hosea Nampala.

Ayehe oya li ye etele oshigongi oowino wopailonga yawo nosha yambapaleke oshigongi ashike.

Risto Kweenda

KuRepublika otu na gumwe ti iilongele uundohotola: N. Hamata.



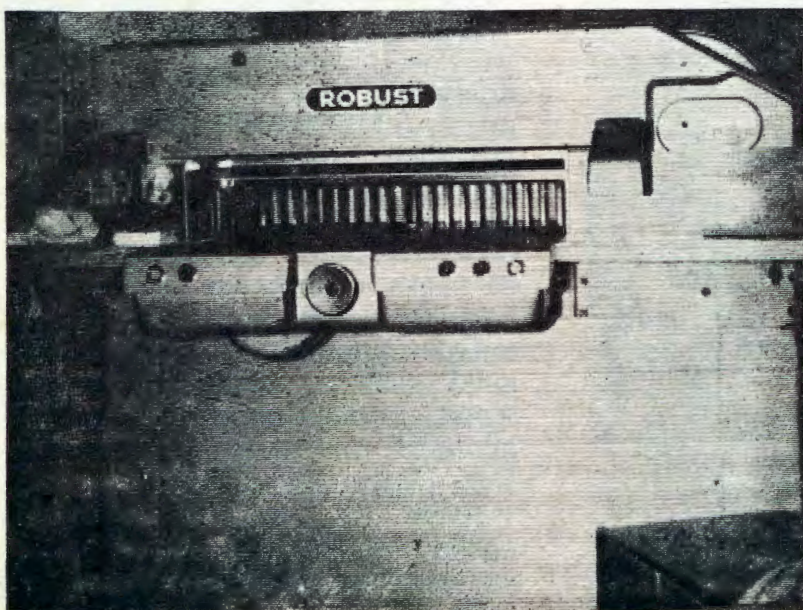
Mbaka ayehe aapangi aalumentu ya li moshigongi shawo. Okuza kolumoho: Alfeus Kalumbu, Kleopas Naingwendje. Linekela Hauala, naEino Nuuyoma.

RUSIA OTA KWAFWA EGIPITI

Israel okwa hokolola omafiku aa dja ko kutya, Rusland okwa tuma paife ovashingi veedila 100 kuEgipiti, nosha kolekwa yo komupopyo waye eshi a tile kutya, otaka koleka diva omatanga ovakwaita yaEgipiti.

Israel okwa ti yo kutya, natango Egipiti oku na nale Ovarusia 10,000 ovo tava yandje eendunge mokulwa, nomoilongo 80 lwaapo otava hongo Ovaegipiti okushinga eedila doita.

Wilhelm B. Kantalelo, Oshakati, ota tseyitha kwaayehe ye mu limbililwa natango notaa dhiladhila kutya oku li po natango omupolosi gwiineya, kutya hasho nando. Ye miilonga mbyoka okwa pita mo thilu, nota longo iilonga yi ililela ngashingeyi, nando nayo wo omOshakati yi li. "Ohandi yandje ombili kunye amushe mwa kala mu na elimbililo," osho ye mwene a popi.



Natango oshinyanyangidho osha taamba omuyakuli omwaanawa ha longo neendelelo mokuteta oombapila. Eshina ndika olya gwa iimaliwa oyindji. Otu shi shi Kalunga ota sile oshimpwiyu oshilonga she shi vule okuhuma komeho.

IIHAUTO TAYI LANDITHWA
LAND ROVER STASIEWA shomvula 1966, sha hingwa oomaila 40.000, tashi pula R1100.00. tashi monika pombelewangerki, Oniipa.
FORD BAKKIE 4 x 4 (tashi hili nomagulu agehe) shomvula 1968, sha hingwa oomaila 55.000, tashi pula R1850.00. Oshihauto otashi monika kOniipa.

Omagano gehambelelo lyoshituthi

Nopondje yOwambo otaku monika oyendji ngashingeyi mboka ya hala okuligola pamwe nOngerki yaElok omolwoshituthihambelelo shomimvo 100. Ongerki oya taamba omagano omanene kookuume mbaka ngashi taa landula:

Dawson & Sons Ltd. Cape Town R 50.00
Aamati taa longo pokapale kodhila kaVenduka 4.00
Metje & Ziegler Ltd. Otjiwarongo, iipilangi yooranda 200.00
Otatu inekele kutya, ngele ehambelelo neyiyambo li thike mpaka tali monika pondje yOwambo, ngele ooshono tashi longekidhwa meni itashi umbwa ondhimbo otayi teka owala. Omasiku hago nga taga endebele.

Omukuluntu gwokoshuise

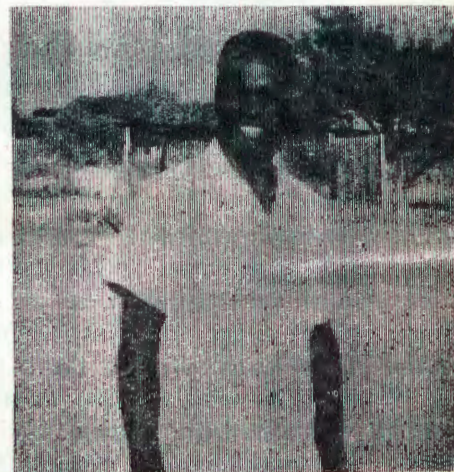
Ompumbwe ya kala po nale okumona omukwathi omuvalelwamo miilonga yakuku Helmi Haapanen, oya yamukulwa ngashingeyi.

Mestela Jona Hitula, Engela, okwa langekwa miilonga mbika yetonate-lo lyoosikola adhihe dhopoongulu (koshuise) mOwambo noKavango. Omaudhigu gomoosikola ndhika 13, inaamu yalulilwa oKavango noompumbwe dhadho, ngashingeyi otadhi konakonwa kukuku Haapanen nomupeha gwe Hitula.

Otaa ningi wo ehokololo lyomiyalu ndyoka taye li tumine epangelo ndyoka hali gandja wo oompumbwe adhihe koosikola ndhika. Omusamane Hitula okwa pitile Juniolo 1967, nokonima okwa kala omukuluntu gwosikola yaamati mEngela. Omugundjuka, opo a hokana notaa tegelele okanona kawo nenyanyu. Kalunga ne mu pe oowino adhihe te dhi pumbwa moshilonga she oshipe.

OKAHAUTO

Holden Station Wagon Model 1964, taka landithwa kOandjokwe. Omapulo kombinga yokahauto otaga yamukulwa komundohotola H. Kyronseppa.



Mestela Jona Hitula

OMUKWETU

Oshifo shOngerki onkwaevangeli paLuther yomOwambokavango
Die Tydskrif van die Evangeliese Lutherse Ovambokavangokerk
Oha zi mOniipa,
Omukuluntu gwoshifo/Hoofredakteur Omumbisofi Dr. Leonard Auala,
Amushanga / redakteur Sebulon Ekandjo
Ondando komumvo mOwambo 70c kUushimba nOkavango 90c
Kombanda yomafuta R1.30.
Oondando nomambestelo naga tumwe kOmukwetu,
Oniipa, P/B. 2015 Ondangwa, S. W. A.
Oshinyolwa shuule
wondeimi 1 otashi futilwa R1.00
oondeimi 2 "- "- R1.90
oondeimi 3 "- "- R2.70
oondeimi 4 "- "- R3.40
oondeimi 5 "- "- R5.00
Oto vulu okutuma efano Iyaashoka wa hala shi tseyithwe nomatumbulo wo gasha ngele ope na.

The Finnish Mission Press Oniipa
P/B 2015 Ondangwa S. W. A.