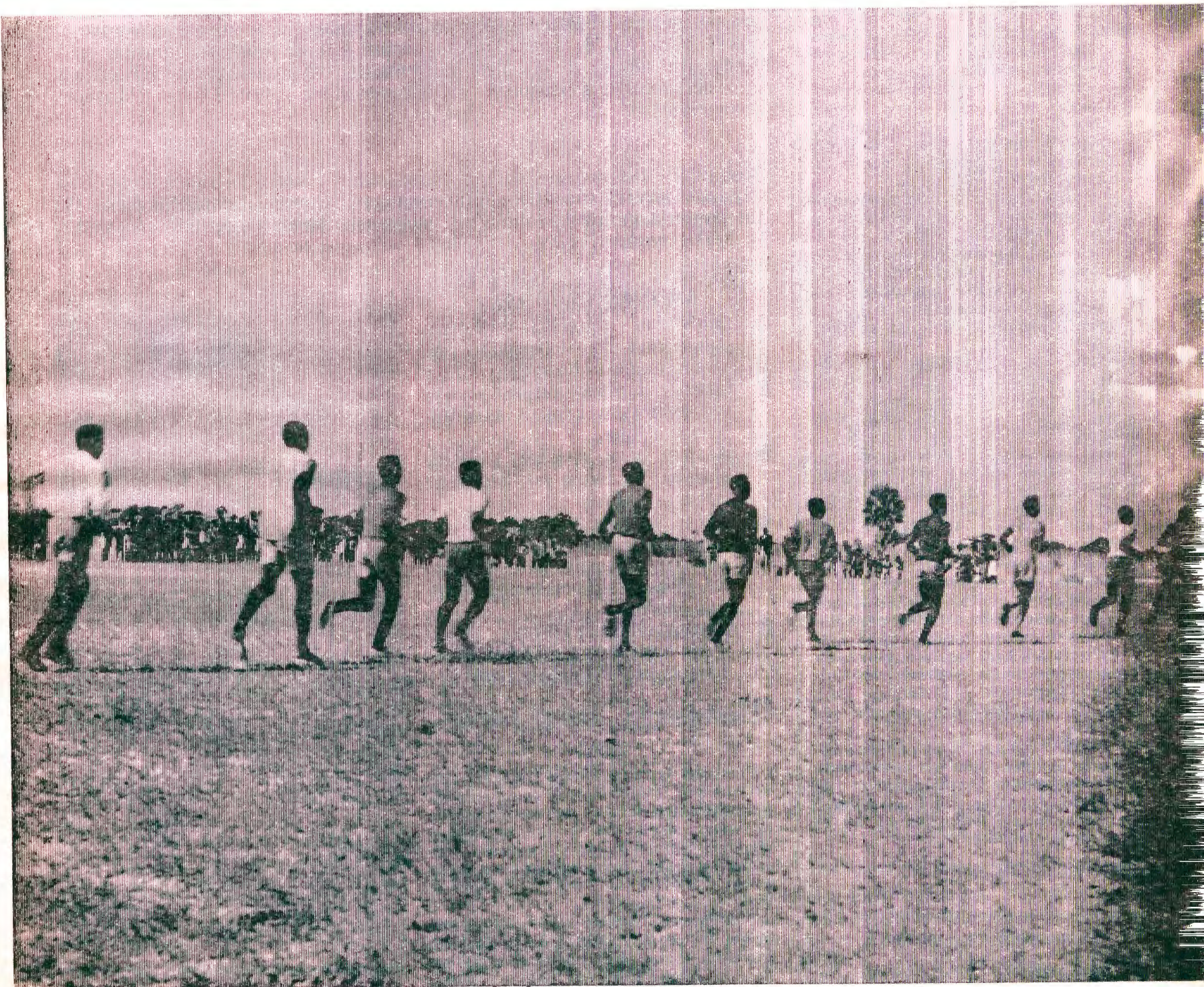


OMUKWETU





OONTOKOLWA DHEPANGELONGERKI

1

Aatumwa yamwe mboka taa ka fudha ngashingeyi kuSoomi, Epangelongerki lya tokola ya galukile keyakulo lyongerki ndjika konima yefudho lyawo, mboka Epangelongerki tali ya tumine ombilive yeithano.

2

Epangelongerki lya thikithilwa onkundana yenyanyu kutya, Ongongahangano yaakwaLuther ya gandja ekwatho lyiimaliwa yokugwedhela po omatungo ngoka ga pumbiwa natango mEnongelo lyaayakuligongalo mEngela. Ekwatho ndika olya taambwa nepandulo.

3

Omulongwasita Heikki Gideon Ausiku ngoka a li a uthwa mEpangelongerki lyeti-27.1.70, oshitokolitho oshiti-2 a ye mosikola yuusita kO-tjimbingwe nokwa yi ko, ihe molweindilo lye nomolwepopilo lyaalongi ye a mangululwe a katsikile mOsekundosikola opo a adhe Matriek. Epangelongerki olya zimine eindilo lye.

4

Omukuluntutumwa koKavango omusamane Pentti Toivanen a lalekwa kEpangelongerki sho ta ka fudha manga kuSoomi. Epangelongerki lye mu pandula molwomayakulo ge nolye mu halele oonkondo neyambeko lyaKalunga.

SHOKA SHA NINGWA MONGERKI 1964

- Ombelewa yongerki noshinyanyangidho ya hanagulwa po koshikungulu shombepo.
- Oshigongi shaagundjuka yongerki ayihe sha gongala tangotango muElim.
- Aasitalongwa yongerki yomUushimba ya talele po lwotango ongerki yaElok.
- Aatonateli yitayingerki shUuninginino noshUukwanyama ya taamba omagano ga zi kuSoomi giuhauto okutsakanitha iilonga yawo.
- Omusitagongalo Tomas Nakanyala a kuthwa oshilonga shuusitagongalo kEpangelongerki.

Oongunga dhaanashilonga

Pethimbo lyetu oongunga dhependji otadhi holoka omolwiilonga nomolwiinaku-gwanithwa lipe mbyoka tayi holoka muuyuni wetu. Ngele ndi li muuhamushanga, muusita, miilonga yuupangeli wiihauto, mOradio, nena ondi lwete kandi na we ongunga yasha, nonda fa oshilongitho shontumba tashi kalelele sigo aluhe.

Twa fa tatu dhimbwa nokuli kutya, miilonga otu li mo pakutopolelwa iitalenti, hamolwa shoka ando tse tu na oondunge tu vule mboka kaaye na oshilonga shoka. Uuyuni wetu ou uka komeho notau pumbwa mboka yu uka wo komeho muuwanawa hamuwinayi. Naamboka ya thigalapo nayo wo onkene ngaa kaye na elipopilo nenge kaye li kondje yongunga ndjika, oshoka Kalunga ta tegelele kehe gumwe a kambadhale koonkondo ndhoka e dhi mu pa.

Ano tu taleni nawa kutya oshigwana shetu, uunene otseni mbaka aagundjuka, otatu shi faleni peni. Otatu shi humitheni komeho uuna tatu itangeleni oondunge dhetu, ne-



Meekulu Lady Baden-Powell, tala kep. 4.

nge iilonga yetu, nenge uuna tatu hempulula kutya: "Ngame omukaleli omuhethi inandi longa shoka nda li ndi na oku shi longa."

Kehe gumwe oku lile po ngoka e mu ithana moshilonga, katu shi yetu yene. Ngele shika otatu shi dhimbweni kaku na ngoka ta vulu okushonopeka oondjo dhe pamukalo nguka.

Kundweni nawa, Josaphat Shangala

Ove omutumwa walye?

Lambalala oundjila vanini, vahapu ve na nokuli eeshoholo nomakitya okutwa ombasikela yoye. Oundjila ovo ove na omafululu nomalambo a kenyeneka. Nge we va shikula oto ka hanga nee oko ihaku liwa eembototo, omeva okunwa a kaka neenghono, yo noikutu yoye yomodoolopa otai kake diva.

Ngege to popi novanhu vaako, efimbo loye otali pupo ashike, osheshi itava popi pashinadoolopa ndelenee opashinaxulo, hano ihaku talwa kovili ngege ya denga, osheshi kai shiivike ko oko.

Vahapu ovapaani, ovashunimoni naava va faduka po nale evangeli novakondwa. Oko ve li keexulo domaongalo ongerki yaElok, luhapu ve li eemaila 20 fiyo 30 kokule noihakulilo, neendjila diwa, neefitola, nomeva mawa, neembelwa ileeepoosha nosho yo eefikola nokuli.

Oinima ei oya ninga ekuma lihe na ekende, nde ovanhu itava dulu okumona olutu laKristus eli tali hepele meengaba omo. Fiyo opaapa ovafitaongalo novaevangeliste vomeengaba doitukulwa oyo, ovo ve lineekelelwa oshilonga eshi. Shiimba va ninga ashishe tava dulu, ndelenee oluhepo otali tane alushe. Oitaingerki nongerki shiimba inai pewa omhito iwa okukwafa moshinima eshi. Okukwafa ovanhu ava, okumanguluka meendjila diwa, okutala oshilonga eshi kutya oshetumo, okukufa okukalamwenyo kwopaxumokomesho mekolo ngashi kwa fatulwa pombada nokudjala olupe laKristus leixupipiko. Omutumwa waKalunga aeke te shi dulu, ndelenee wovanhu ota katwa.

Shiimba ongerki oi shii okwiilikana pamwe naJulius Disseldorff, Omundowishi kutya: Jesus tu pa elixupipiko shili, yadifa eemwenyo onghenda nombili, fye tu ku fe mohole nomoshili.

ONGERKI TAYI HIYA

Epangelongerki otali hiya omagongalo agehe mOngerki yetu ga kuge onkugo koshipala shaKalunga megalikano, okwiindila Kalunga a lokithe omvula yOmbepo Ondjapuki, a papudhule omwenyo dhetu. Epangelongerki olya utha omagongalo agehe ge shi ninge mesiku eti-11.10.1970, tu pewe epapudhuko mongerki yetu nomoomwenyo dhetu.

LITEKURURA

Megaununo eli Hompa Jesusu kuna kupuka elitekururo. Kulitekurura kunwa maruha gopatatu.

- a) Kulitekurura,
- b) kuhuguvara,
- c) ehampurukururo lyomoMpepo.

Maruha aga nagenye gopatatu kuhoroka posiruwo tupu sooso muntu ana kuligava melitekururo.

Elitekururo kuvhura tupu ngano kutumba konkango ezi azi **kudivisa**. Pamwe to pura nge asi: Kudivisa yinke? Elimbururo lyangesi yilyo; kudivisa **nzo**. Bibeli tazi tu rongo asi, nzo yizo etuguruko lyoveta. Nzo yizo murwisi nomulihapi gononkondo daKarunga. Nzo yizo tupu zozina zagwene Adamu naEva mospata saEdeni.

Udona tupu wina yiwo wa va pukisire va zapuke monzira zaKarunga zouhunga. Kutunda tupu kezuya lina, uhungu wa lihanenene mouzuni naunye. Muyapostoli Paulusa kuna kutumbura ngesi; "Navenye vana zono awo kapi vana kara hena nepayimo lyaKarunga." Rom. 3:23.

Nzo kutugusa megwaneno lyetu naKarunga. Azo hena kupiyaganeke egwanekero lyetu novakwetu. Kapisi vakwetu velike, nye nanyamwetu. Nzo kugusa po mbili zetu naKarunga. Yimo hena tazi gusa po mbili novakwetu mouzuni nanyamwetu nsene kapi tuna litekurura. Yininke eyi ngaunga Karunga tayi pwaga mo mwetu nsene tuna kara monzira zononzo.

Jesusu kapi ta ndindire muntu a sanseke nzo zonene zelike makura, nye **nononzo nadinye hena**. Tatu vhuru kudivisa uzuni nyama zetu nomuzonaguli. Nye mokugwanesa eyi muntu tahepa eharo. Eharo lyokuhara Jesusu Kristusa. Tasi tanta asi, kulivangeka kuninka udona.

Muntu ntene ana kara neharo, kapi hena a hapayike udona wendi. Momati gazumbana kapi ana hapa nzo zendi.....

Poruveze rwantaantani nkango ezi elitekururo kapi hena zina kara nomulyo momatwi govakriste. Nkango ezi zina duduka momapongerero getu. Vamwe nokuli kapi vana hara hena kuzi zuvha momatwi gawo, yeeyi tazi va sipageda. Nkango zomuhowo ezi gatumbwire Hompa Jesusu mezuvhiso lyomuhoverera yizo "Litekurureni, yeeyi sirongo seguru sina henyene popepi." Mark. 1:15.

Asser Lihongo

Oho mono tuu oshifo shoye?

Otandi pandula kehwamo lyoshigwana shetu nokuli mokwiikongela iifo yokulesha. Kombinga yaambesteli yOmukwetu opwa fa pe na mboka ihaa si oshimpwiyu shokutala iifo yawo ngele ya thiki ko koshinyanga shaandjawa.

Iifo oyindji sho ya kala ethimbo ele moshinyanga ndishi pamwe oya halakana owala, nenge ya pewa ngoka ihee ku mono aluhe, nenge ishe-we komukalo gulwe gwa fa ndhoka. Onke inashi thika nando we shi tegelele aluhe.

Sa ano oshimpwiyu u ye aluhe koshinyanga nenge u tume ko ngoka wa tseye nawa e ku kwathe. Oyendji ethimbo ndika oya humu komeho noyi ikongele uuketha mopoosa wawo yene, nopoosa yawo otaye yi mono komukalo omwaanawa. Shika oshi shi ishewe okuholelwa.

Otandi indile mboka inaa iinyolitha natango oshifo shOmukwetu, ye shi ninge, nenge oshifo shEhangano. Iifo mbika iwanawa unene, ngo-ye wo onzapoyandje mushika.

J. J. Kangonga

OOLYELYE TAVE UYA

Ongudu inene yovatalelipo tava di kOsoomi otwe i teelela vali mohani ei pehovelu. Osho osheendo shovanhu 72 ookaume ketu noketumo. Apa mOwambo pOniipa otava ka fika eti-12.6. nde otava kala fiyo 18. 6. Onghenda inene eshi ovaenda vetu ihatu dulu okukala navo fiyo omoshivilo shoovene muJuli, nde nande ongaha, olweendo lavo mokati ketu kali fi Oshimha. Ohashi tu dimbulukifa natango ookaume ketumo kwa li ve tu talela po omudo waya, muJuni, eshi va ka shuna konima otwe ke shi dimbulukwa shili kutya ova endele po.

Ongudu ei otai ka talela po eenhele dihapu mOwambo amuke, ngashi Oshigambo, Kongo, Engela, Onguediva, Okahao, nomapya etumo mouninginino. Naava yo otava ka tukulwa eengudu nhatu momalweendo avo naanaa ngashi venya. Ou u li popepi neenhele da tumbulwa oto ke va mona. Ou u li kokule nado hangika hano wa ehena popepi naimwe yaado. Mokatikavo omu na ovo twa shiiva nawa tate Jalmari Martunen natate Matti Koponen. Ovo aveshe ohatu va halele epuniko lihapu mokati ketu.

Daniel Nashilunda, Walvisbaai, ota ti: Aamwameme, otatu mu dhi-mbulutha mu simaneke mboka haye mu longo nohaye mu kwatele komeho nohaye mu pukulula, mu ya hole shili omolwoshilonga shawo. Ne mu kale nombili mokati keni.

Ihe Kalunga kombili oye mwene ne mu yapule uuntu auhe omwe-nyo nombepo nolutu lu gamenwe lwaa noshipo sigo okugaluka kwOmuwa gwetu Jesus Kristus. Nguka he mu ithana oye omudhiginini note shi gwanitha wo.



Jeremia Kangonga okwa longa ethimbo ele pomashina gokunyanyangidha Omukwetu nomambo niinyolwa ayihe hayi piti moshinyanyangidho. Ota kundu aatambi yOmukwetu ayehe.

HAI TI!

Oho li shike? ohashi telekwa ngahelipi? Mofitola yomamho paife omu na omuhongindunge meteleko, embo liwa la mana, ola shangwa kumeme Kaarina Poikolainen. Pwilikina u tale Mestela Erastus Shame-na ou e li leshe eshi te li popile, ta ti:-

"Eli olo nee embo la pumbiwa lela, nola pumbiwa meendelelo nokuli. Omukaa wa teka filu nondjala ya ninipala, osheshi omukaa oo ondjala. Paife ohatu ka mona yo oshitivali noshititatu momaumbo ovadalelwamo vopufye. Ola shangwa melaka liwa neenghono."

Momapandja alo 77 mu na yo eenghedi dokukosha oikutu noku i kangula pamaludi e lili noku lili. Oli na yo ondado iwa yeesenda 60 ashike. Endelela hano u lilandele fimbo inali pwa po, to lilwa oshitivali noshititatu, kuvakweni.



Onhanda yovakongindjila avesho kumwe oukadona novamati mOshatotwa, Onandjokwe

EUVANEKO LYETU

Tse oontetango dhaNiipa
tu li nena mongerki
Okugandje uvaneko
tu kambadhale tuu
okuenda ongakongindjila.

2.

Otu nepandela lyetu
ndyoka tu li hole
Oyo endhindhiliko lyetu
tu kambadhale tuu
okuenda ongakongindjila.

3.

Shilonga shi sheyakulo
oshidhigu sha simana
Twa hala oku shi tameka
tu kambadhale tuu
okuenda ongakongindjila.

4.

Otatu pandula etumo
lyaSoomi ndyo li tu hole
Lya longa lya papula
tu kambadhale tuu
okuenda ongakongindjila.

Oukongindjila woukadona

“Kaleni ovakongindjila vawa, tamu xumu nawa komesho, nohandi ka hafa eshi handi ka uda omuvalu womatanga ovawiliki voukongindjila tau hapupala meduleni, Kalunga ne mu yambeke”, osho meekulu Lady Baden-Powell a lekela ovakongindjila mOvenduka neudo.

Meekulu Lady Baden-Powell eshi a talela po lumwe Suidwes-Afrika, okwa li a shakenekwa keengudu adishe dovakongindjila muSuidwes pamwe novawiliki vavo. KOwambo yo okwa dile osheendo shoukadona 16 va dja mOnandjokwe, Okahao nokuNkongo, mewiliko lame me Raija Salmi. Kwinya otwa shakena ko neengudu dihapu da dja keembinga neembinga, fiyo kOlange.

Oshe tu kumwifa kanini osheshi kwinya fye ava twa dja kOwambo ofye atuke twa li ko Ovalaule, ndelenee avesho Ovatililyaane nEembasitela. Ashike nande ongaha, ekwatafano okwa li liwa unene.

Otwa kala omutumba mougudu nakeshe etanga ole lilongekida nawa osho tali ulikile vakwao shoilo-

nga yokomake, notwa teelega nee meekulu. Eshi ngo a fika mokati ketu, otwe mu fimaneka nokufikama noku mu kunda nomaimbilo avali. Opo nee ye okwa popifa eengudu adishe, ndele a kuminwa unene etanga letu ava twa dja kOwambo.



Onyudu yEenhetango otai tambulilwa monhele yovakongindjila

Okwe tu halela omahalelo mawano noku tu twa omukumo tu diinine natango opo oshilonga eshi shoukongindjila shi tandavele yo nomOwambo.

Shiimba ito hale oku shi itavela kutya, eshi kwa konakonwa oilonga yomake etanga lokOniipa olo la lukwa **The 1st Cadet**, ola wina avesho. Eshi okwa li shi tu uditife



Etanga lovakongindjila kOwambo otali fikama apa ponhele yalo mOvenduka

nawalela, osheshi mboli onunona o-tu shi ngaha okudja po. Oshe tu wedela vali ehalo liwa okudiinina oilonga yetu.

Lady Baden-Powell, omufiekadi waRobert Baden-Powell, omudiki wehangano loukongindjila mounyuni, tete movamati opo nee moukadona. Lady okwa twikila oshilonga eshi mouidiinini fiyo onena nande oku li womido 81. Oye paife omutwe woshilonga eshi shoukongindjila mokati koukadona mounyuni aushe.

Oha endaenda noilongo ihapu okupendula ovawiliki voshilonga eshi noshe mu fimanekifa unene mounyuni aushe, osheshi kape na vali mounyuni omukainhu a enda ngaye.

Olweendo laye lopaike kuSuidwes olutivali eshi lwotete a li ko momudo 1927. Oilongo 87 oya tambula oukongindjila, noilyo yomehangano eli paife oi fike peemiliyona 6½. Elalakano eli meekulu Lady Baden-Powell okwa ti kutya, **okumona ovanhu vawa**. Oye okwa enda pamwe nomona waye, omwalikadi, naye yo omuwiliki moshilonga eshi, noshitenya shaye.

Kombinga yovakainhu mOwambo okwa kendabaliwa neenghono okukonga ovawiliki veengudu dovakongindjila. Elalakano oli li opo kutya, ngenge kwa monika ovawiliki va wana, va pya moshilonga eshi nova pita nawa eenghatu adishe tadi pumbiwa mewiliko eli, otaku hovelwa nee ovakongindjila voo venevene.

Eengudu domelinyengo eli, otadi tukulwa meengudu nhatu. Yotete oukadona vepupi leedula 7-11, tava ifanwa **Eenhetango**. Onhivali okuhovela peedula 11-16 tava ifanwa **Ovakongindjila** noyaxuuninwa

okudja peedula 16 - fiyo komesho tai ifanwa **Ovaendindjila**.

Olwotete mongerki aishe yaElok



Apa Lady novayakuli vaye tava tale oilonga yOvawambo

eshi etanga olo Eenhetango la hovela eti - 22. 2. 1970 nova fikama mongerki yomOniipa ongo tava indile omailikaneno keongalo mwasho ve shi hovela. Okangudu aka kounona 24 oke li mewiliko lameme Ester Amaambo, nameme Selma Mumbala, omukwafi waye.

Oshoondaha keshe konima yelangelokalunga ove na eetundi.

Oku na yo okangudu kewiliko loshitai shoukongindjila shokOwambo, haka ongala luhapu



Meme Aase Geel omuwiliki omukulunhu muS.W.A. ota kundu ovaenda voshongalele

okukundafana osho shi na okuningwa po mehanganano eli. Oka hoololwa koshoongalele shomudo sha ongalele eti-11.10. 1969 mOshatotwa, Onandjokwe omo mu na oilyo ei;

oomeme:

Raija Salmi Onandjokwe, omuwiliki
Laina Kivela Oniipa, hamushanga
Katrina Auala Onandjokwe
Ester Amaambo Oniipa, omuniiniwe
Riitta Honkanen, Okahao
Rakel Shekunyenge, Nkongo
naViktoria Kanhalelo Oshakati

Ewilikongudu eli ola ongala lwotete eti-10.3.1970. Omaundjuu aeshe otaa etelwa okangudu aka, nongenge ope na osho shinene tashi nyengana, ohaka taunhukifa kOvenduka kumeme Aase Geel, omuwiliki omukulunhu woshilonga eshi muSuidwes alishe. Okwa talela po Owambo luvali nokuli, nokwa teelwa vali neudo pexulilo lomudo.

Okutumbula paxupi ashike ngenge hatu eta oshilalakanenwa shoshilonga eshi nomongerki yetu, ohatu dimbulukwa ashike osho sha tongwa komuwiliki omukulunhu mounyuni aushe, meekulu Lady Baden-Powell, kutya, otashi tekulile oshiwana ovanhu vawa, hava duli-ka kuKalunga nokovanhu.

Elise Shilongo



Ongudu yEenhetango oi li mofikola, tala nhumbi tava ulike nomunwe wa kula

Egwedhelo mewilikongundu

Miilyo yEwilikongundu lyaagundjuka Epangelongerki lya utha mu kale omuwiliki gwaakongindjila Katrina Lugodhi Auala, peha lya Eero Kervinen ngoka a ka fudha po mangakuSoomi.

OSHILONGA SHETUMO LYASOOMI MOWAMBO

Osha li uusiku weti-30 lyaDesemba 1868 sho osikepa yothaila "Cape City" ya li tayi ukilile metulilo lyoo-sikepa lyaTafelbaai, nomokati kaayendifuta omwa li aalumentu 9 aagundjuka ya za kokule kuumbangalantu waEuropa. Oyo ya li aatumwa Aasoomi yotango mboka ya li ya tumwa kuAfrika kEhanganotumo lyaSoomi okweeta uyelele wevaangeli mokati kaapagani.

Elalakano lyawo olya li okuthika kOwambo, evi lyaapagani ndyoka ethimbo ndiyaka inaali tseyika manga. Ngiika aatetekeli mbaka oya li ye na okuyamukula omapulo ngaka ngashi wo haga pulwa aalanduli yawo kutya: "Oshike shi na oku mu fala kokulekule nevi lyeni ngaaka kape na nando aapagani puushiinda wevi lyeni?"

Ihe ngashi naanaa sha li eyamukulo lyawo osho wo tashi kala eyamukulo nolyonena: Kutya medhiko lyEhanganotumo lyaSoomi, konyala oomvula 10 dha piti manga aatumwa yotango inaa tumwa, okwa kala elalakano lyokuya kiigwana yaapagani ya kala handiyaka yuuzilo waSoomi, ihe omupangeli gwaRusland, ethimbo ndiyaka okwa keelele oshilonga shetumo shi longe moongamba dhoshilongo she.

Manga ihe ehanganotumo tali kongo ehala lyokulongela mo oshilongatumo, olya tameke okukoleka omahanganotumo gomiilongo yilwe. Omolweindilo lyaKarl Hugo Hahn, omutumwa gwehanganotumo lyAandowishi mokati kAaherero, Ehanganotumo lyaSoomi olya tokola okulonga mOwambo ongehala lyetumo lyawo.

Omusamane Hahn okwa li a nyola ngeyi:

"Medhina lyaKalunga, nomedhina lyaapagani omayovi mboka Omuwa he ya egululile osheelo, otandi he-dha kune megalikano, taagulukileni kutse mu tu kwathe."

Omolwegalikano tali inyengitha omutima lya tya ngeyi, Aasoomi oya tala osho egalikano lyawo Omuwa e ya egululile osheelo, noshinima sho sha konakonwa nawa, Owambo oya taambwa noya talwa ongehala lyetumo lyawo, na ishewe omusamane Hugo sho a koleke kutya osha zi keindilo lyaakwaniilwa ya hala Aatumwa.

Onkene kasha li unene oshikumithi kuShikongo shaKalulu mwene gwoshilongo shaNdonga pethimbo ndiyaka Aatumwa 9 sho ya thiki mOwambo. Aatumwa 9 sho ya thiki, Shikongo okwe ya kundu ye mwene nesiku eti-9 lyaJuli 1870 okwe ya ulukile ehala lyopOmandongo ongomukalo gwawo. Opo mpoka ya li ya kutulula omatamba gawo goongombe popepi netsali ndyoka lya dhikilwe po kaakongo yoondjamba.

Eti-10 lyaJuli numvo otali ka kala esiku lyokudhimbulukwa etameko lyelongelokalunga lyopakriste muule woomvula ethele limwe mOwambo. Tango Aasoomi yi ilongo Oshiherero mOtjimbingwe]manga inaa thika mOwambo, noshilongatumo ye shi tameke melaka ndika. Omadhi-na gaambaka omugoyi ogo ngaka:

B. Bjorkulund, M. Rautanen, K. A. Weikkolin, P. Kurvinen, K. L. Tolonen, K. A. Juvelin, J. Heimonen, E. Juntunen, naA. Piirainen ngoka a longo unene mOmaruru ongomushingithi.

Oshilongo, ombepo, aantu, elaka naashihe osha li oshinima oshikwii-longo kuyo. Ihe eidhidhimiko aluhe olyo ekota lyuukwatya womutumwa nosho olwindji emakelo kuye.

Omaliiko gawo ga yakwa po, oomwenyo dhawo dha tilithwa esiku ke-he omavu gomombepo ompe yuupyu ge ya hulike po nosho tuu. Osho ayehe omulongo nagumwe yaamboka yotango oya sile methelemumvo 18 kuuvu wamalaria. Andola hakeitaalo lya kola lyomuKalunga omugandji omunene gwoshilonga, nenge elalakano lyehalo ewanawa okukwatha aapagani, ando sha nyengana okukala ethimbo lyoomvula 13 dhotango moka inaamu monika nando iiyimati yoshilonga shawo. **Kep. tali landula**



"Kaleni aayifupipiki, i-ndeni ano nuupenda ne mu gwanithe oshimpwiyu sheni shi nondilo okukala aatumwa peha lya-Kristus," osho okangu-ndu kaatumwa mbaka ka li ka laleka poshi-yambelo megongalo lya-Helsinki komumbisofi L. Schauman eti-10 lya-Juni 1868. Eti-24 lyomwedhi tuu ngoka olyo esiku ya li ya ti: "Hei-heei" kooyina noohe, kaamwayina, kookuume nokohole yoshilongo shawo noyu ukilile ko kuAfrika. Nani oshili kutya: "Otaa iitaale ngiini ngele itakutumwa?"



Kolumoho aatumwa yotangotango Aasoomi ngashi ya thikile mOwambo. Oya li ya kundwa kookuume kawo ya tya ngaaka ngashi taa monika mefano kolulyo. Ngiika oya dhiladhila shike okutsakaneka lwotango mokukalamwenyo kwawo aantu ya tya ngaaka? Kape na ngoka ta vulu okuhunganeka oshinima shika.

Kakele ashike kiilonga yokutunga, oya longo wo petamekolela elongo lyuukriste. Konima yoomvula 13 aaitedhululi yotango oya shashwa. Olya li esiku lyenyanyu sho aalumentu Aawambo 6, ya shashwa pongulu yetumo pOmulonga eti- 6 lyaJanuali 1883.

Iiyimati yotango ya monika nga, ihe nando ongaaka pwa kala omaudhigu nomaipulo ogendji, onkene ngaa oshilonga osha taandele. Osho wo kwa tokolwa petameko lyethelemumvo 19 aakiintu aagundjuka nayo wo ya tumwe kepya lyetumo ongaapangi nenge aalongi. Momumvo 1908 omundohotola gwtotango omugundjuka Selma Rainio okwe ya kOwambo nokwa tungitha Onandjokwe.

Opwa kala ompumbwe onene yomambo gokulonga Aawambo, naatumwa oya kondjo oku ga holola po. Okambo kotango ye ka nyanyangidhitha oko okaA.B.D., nkoka ka landulwa kokatekisa okashona nokomahokololo gomOmbimbeli. Nokuli 1903 Etestamendi Epe olya holoka wo melaka lyOshindonga.

Oshilonga shelundululo lyOmbimbeli ayihe otashi simanekelwa unene ependa Martin Rautanen, ngoka wo a talwa "Omuyapostoli gwAawambo." Omambo omakwawo oga nyanyangidhwa wo muSoomi, ihe omumvo 1901 oshinyanyangidho osha dhikwa mOniipa, nosha gandja ehumokomeho enene mokutaandelitha omambo gopakriste nenge omakwawo gosikola. Noshilonga shika shoshinyanyangidho osha kwatelwa komeho ngashingeyi ethimbo ele kAawambo yo yene.

Osoomi oya kala kokule niimaliwa yetumo ihayi monika nuupu, onkene osha thiminike ompumbwe yaavalelwa mo yo yene ya putudhilwe oshilonga opo ya kwathe mokuhumbata oshimpwiyu shiilonga yomokati kawo. Mo 1913 ano okwa dhikwa oseminali yaalumentu ndjoka ya landulwa kosikola yaakadhona konima yoomvula omilongo mbali. Mpaka aakadhona oya egululilwa wo ompito yokulongwa nokuputudhwa ongaalongi naapangi. Osikola yaasita ya tameke 1922 pOniipa, naasita yotango oya yapulilwa oshilonga shuusitagongalo 1925.

Osho sha li olweedhe oluwanawa komukulupe gwomimvo 80 Martin Rautanen okukala mesiku ndika, noye mwene a yapula aayapulwa mba-ka 7, manga inaa mana oondjenda dhe.

Gumwe gwawo: Sakeus Iihuhua e na natango omwenyo. Oshilonga sha taandele okuza mOndonga shu uka muuninginino. Pethimbo lyiita yotango yuuyuni, aatumwa yetumo lyAandowishi ndyoka lya kala tali longo mUukwanyama, oye shi etha po omolwomaudhigu gamwe, ihe Aasomi oye shi kutha po noya tungile komukanka gwAandowishi ngashi ye gu tameke.



Omusamane Hugo Hahn



Aalongi yotango yoseminali otaa monika mpaka momumvo 1923. Kuku Emilie Ninda oye gumwe gwaalongi yotango omukiintu. Ota monika konima kolulyo.

OKavango ka talelwa po kaatumwa 1926. Nkoka oya adha ko Aakavango oyendji ya longwa uukriste kaantu mboka ya longo nale mUushimba noya shashelwa mo. Metalelo po ndika Aakavango oya holola ondjulukwe yawo yokushashwa noye shi ningilwa. Methimbo efupi lyoomvula dha landula omahala ogendji getumo oga dhikwa komunkulo gwomulonga gwaKavango.

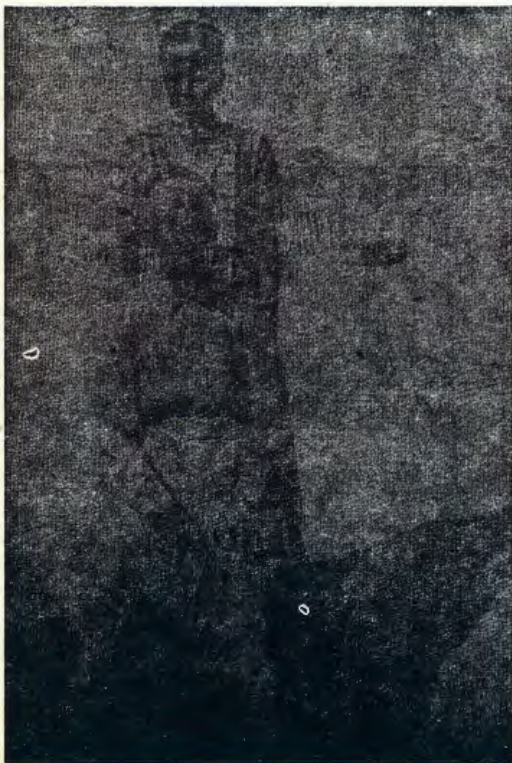
Iita yuuyuni oya tula aatumwa muudhigu owindji wopambepo nosho tuu wopailikolwa, omoluukokule wongerki yawo nevi lyawo. Ihe nando ongeyi oshilonga osha humu ngaa komeho, nuunene molwomagongalo gamwe ga mono omukanka gweithikameno opwa ningwa oshindji shi vule shono sha dhiladhilwa.

Ihe ondjila ndjika oya yele 1957 uuna ongerki yOwambokavango oya nyolwa mepangelo ongongerki yi ithikamena. Nomethimbo lya landula epangelo lyaS.W.A. olya tameke okugandja omakwatho koshilonga shoosikola noshiipangelo. Shika osha fala epangelo monkatu yokukutha po oshilonga ashike shomoosikola nomiipangelo neyambidhidho lyetumo alihe olya hulithwa po thilu ngashingeyi noholomende ayike tayi longo. Shika osha eta uupu wokulongitha iimaliwa yetumo nosha ningitha ompito ombwanawa yokuhumitha nawa oshilonga shevangeli komeho.

MuJuli 1963 okwa ningwa oshituthi, oshinene shenyanyu mOniipa ongerki ongundjuka sho ya hogolola omumbisofi Leonard Auuala, ngoka kwa li nale omuwilikongerki. Moshituthi shika oshinene sheyapulo lyomumbisofi, shoka Dr. Martin Rautanen inee shi yaguma nando esiku limwe, omwa kala omwanakadhona Johanna Rautanen.

Ngashingeyi ongerki yOwambokavango oyi na omumbisofi, aasita 92, aayevangeliste 142, aalongi yoskola yosoondaha 160 naalongi ooyakwawo oyendji taa longo nokwiigandja kiilongayakulo yi ili noyi ili nehalo ewanawa momagongalo 46.

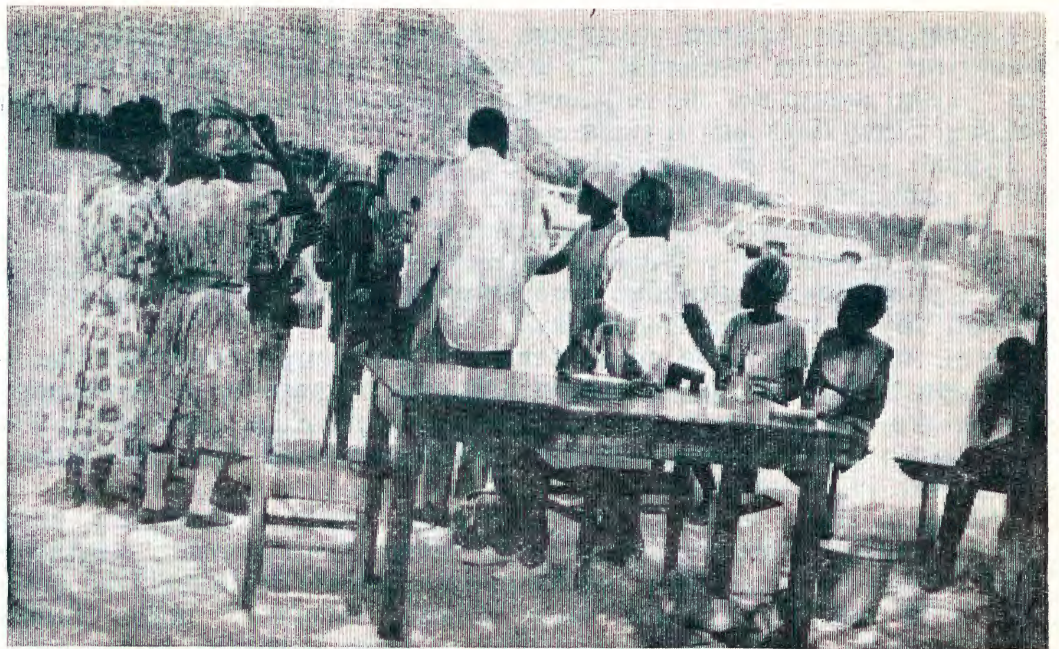
Tala kep. tali landula



Omugundjuka Johanna Nakambale na yina Frida.

OMUKUMO GWONGERKI MOSHILONGA SHETUMO

1. Kalunga okwa lombwele
Ee aatumwa aamati ye
Kukala kwawo miilonga
Yii tule omukumo muye
Ituleni omukumo aamwandje
Ikoleleni aamwandje
Ndi mu na ongame nda gwana.
2. Omukumo gwawo gwa monika
Ee miilonga mongerki yetu
Nando ya longo nuudhigu
Omukumo yi ikumika
Ngolongo miigwana yetu
Aantu yi itedhulula
Nena omagongalo nga
Kuhe taga monika.
3. Eeno tse tu kaleni wo
Ee nomukumo ngaatumwa mba
Opo tu tsakanitheni wo
Shilonga shOmuwa metumo
Twaalimbililwe we kusha
Twaatile Omuwa e tu na
Nonena Kalunga ongo
Te tu lombele tu ye ko
4. KAayeleele yokuKongo
Evangeli li tondoke
KAayeleele kUutsathima
Naa hoka wo li tsakane
Etoto Tjivanatj' aakwetu
Omapya getumo ngo
Tunda-Miindamba puushinda
Hapu dhOmuwa dhi thike tuu.
5. Shilonga shetu aakwetu
Ee shilonga sha simana
Tuningeni an' aakwetu
Tu longe tse twiinekela
Twii koleleni omOmuwa
Shigwana shi hupithwe
Ngolongo tatu ka pewa
Shishani shesindano mpee
megulu mpee.



Mpaka otapa monika nkene oshituthi shEtumo sha dhanenwe me-gongalo IyaNiipa. Osho eulukilo lyoshilonga shomundohotola kuku Selma Rainio. Ongundu onene tayi monika mpaka oyaasindjala ye ya okukonga iikulya

Aasitagongalo yotangotango yaheyali otaa monika pevi okuza kolumoho: Nabot Manasse, Gideon litula, Sakeus lihuhua, Obadja lihuhua, Paulus Hamutenja, Juuso Ngaikukwete naSimson Shituaa.



Yaali yomuyo ayeke ye na omwenyo, S. lihuhua na Gideon litula

OSHILONGATUMO - - - - -

Ongerki otayi longo wo oshilongatumo shayo muuzilo nomuuningini- no moKavango unene mokati kAakwankala. Nena aatumwa Aasoo- mi otaa tala konima nepandulo enene notaa dhimbulula kutya:

“Osha zi kOmuwa nosha ningi iikumitha momemo getu.”

Natango ongerki oyi na omakwatathano noongerki dhilwe wo muA- frika nenge muEuropa. Oyo oshilyo shongongahangano yaakwaLuther muuyuni auhe (L.W.F.) nomumbisofi Auala oye oshilyo shongundu o- mpitithinpango mehanganano ndyoka okuza 1963.

Ongerki otayi longo wo oshilonga shelundululo lyOmbimbeli melo- ngelokumwe nehangano lyOmbimbeli IyaSuid-Arika, pamwe noongerki dhopuushiinda wayo: ongerki yaKatolika noyaAnglikani.

Natango ehanganotumo IyaSoomi olya uvaneka okukwatha ongerki ongundjuka mpoka ekwatho tali pumbiwa, ihe osho wo oshilalakane- nwa nenge oshinakugwanithwa shomutumwa kehe iiyambele oshilonga shekwatho.

Numvo 1970 pOmando otapu ka dhanwa oshituthi shoovvula ethele uukriste sho we ya mOwambo naampoka lwotango aalumentu 9 ya dhikile oothayila dhawo. Mpoka oshigwana shAawambo pamwe naaye nda yasho otaa ka tala notaa ka uva oshilonga shetumo noshongerki muule woomvula 99 dha piti.

Kirsti Ihamaki

OMUKWETU

Oshifo shOngerki onkwaevangeli paLuther yomOwambokavango
Die Tydskrif van die Evangeliese Lutherse Ovambokavangokerk
Oha zi mOniipa,
Omukuluntu gwoshifo/Hoofredakteur Omu- mbisofi Dr. Leonard Auala,
Amushanga / redakteur Sebulon Ekandjo
Ondando komumvo mOwambo 70c kUushimba nOkavango 90c
Kombanda yomafuta R1.30.
Ondando nomambestelo naga tumwe kOmukwetu,
Oniipa, P/B. 2015 Ondangwa, S. W. A.
Oshinyolwa shuule
wondeimi 1 otashi futilwa R1.00
oondeimi 2 -"- -"- R1.90
oondeimi 3 -"- -"- R2.70
oondeimi 4 -"- -"- R3.40
oondeimi 5 -"- -"- R5.00
Oto vulu okutuma efano Iyaashoka wa hala shi tseyithwe nomatumbulo wo gasha ngele ope na.

The Finnish Mission Press Oniipa
P/B 2015 Ondangwa S. W. A.