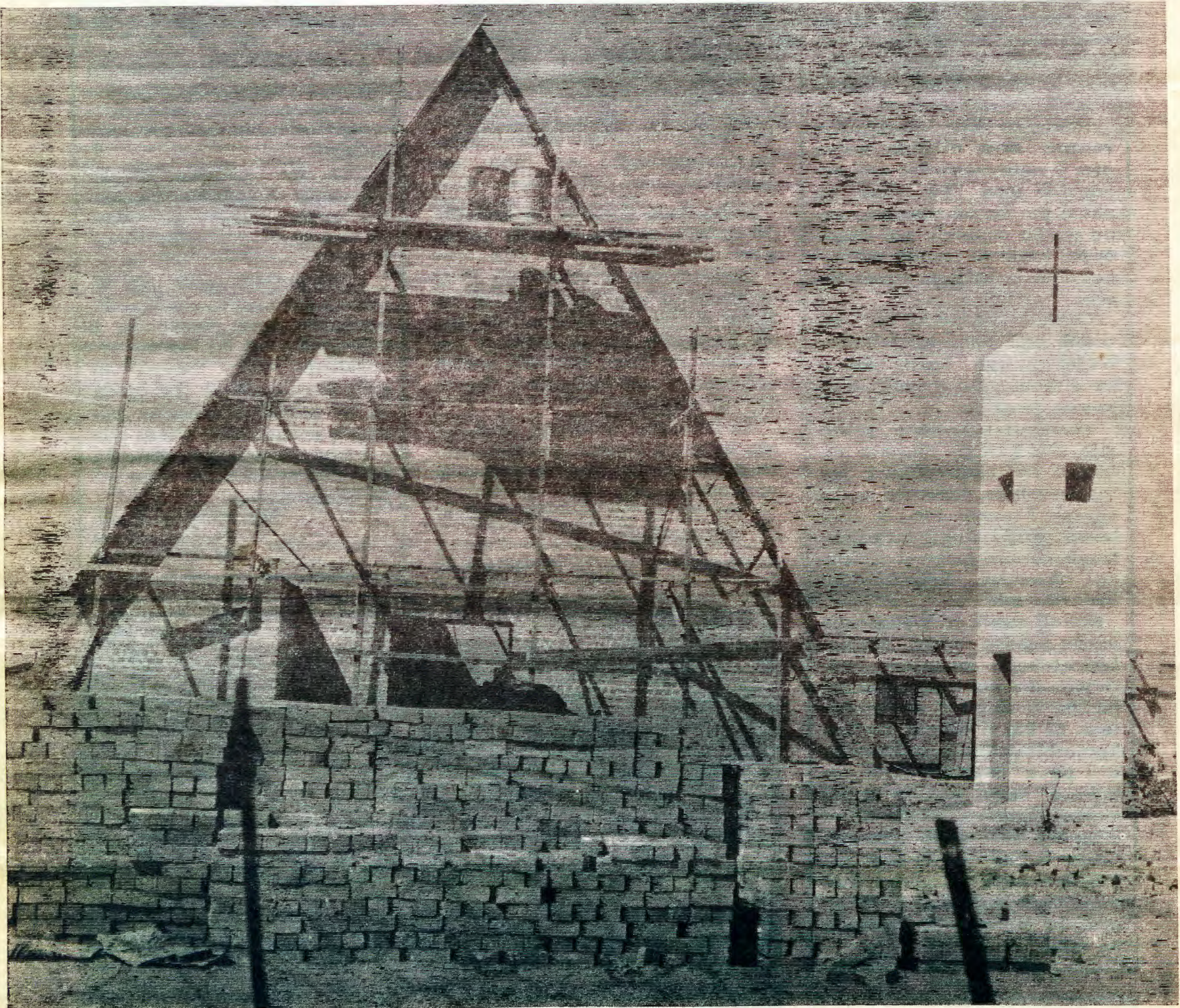


OMUKWETU





Eshiivifo

Ovafitaongalo:

Eengudu dovaimbi da hoololwa momaongalo,

Kalunga ngenge e shi hala ohatu ka tamekeni vali okursus yetweni yakula yOngerki kOngwediva mefiku 5/6/1970.

Amushe ovo mwa hoololwa momomaongalo otamu indilwa mu kale poinyangaongalo yeni; opo tamu ilwa koihauto mu fikifwe kOngwediva.

Ovakwanyama otamu ka fikifwa kEngela 4/6/1970 opo mu ka twikile okuya kOngwediva 5/6/70 Ovauninginino nOvandonga otamu ka tutwa 5/6/70. Kaleni hano pomalupaleongalo eni opo mu hangike.

Osho tamu pumbwa okweetelela oikumbafa, ouyaha vokulila nomakopi.

Omulumenhu keshe na kale e na ohema itoka nomukainhu keshe na etelele R3.00 omolwomudjalo woshivilo ngashi sha udafanwa.

Ohatu mu halele eshakeno linelao nomhepo i yadi ehambelero laasho twe shi ningilweni.

Tu indilileni eendjovo daKalunga di mone omhito yokufika komushitwa keshe, opo avesheveshe va mone exupifo.

Omwene ne tu punikile omudo ou wehambelero.

A. Hirvonen

T. Ndevaetela

NGENO NDI KA KALE MO

Onda hala ngeno ndi mone omhito iwa nde handi ka kala yo koshivilo shOngerki kOmandongo, osho vahapu tava ilikana eilikano eli, ovanyasha, ovakulupe nounona nokuli.

Osha yela unene kutya nande ngoo hokololelwa kenya-kwa ihali fii ko,itali ke ku manena oshivilo shomOmandongo. Onghe oshiwa shili u ke litalele ko ove mwene.

Ndelenee osha fa kutya kevahapu tava diladila kutya ove li nale moshivilo eshi nande Juli inau fika. Opo ho uhala po, ho tokelwa po, naapo yo ho ongalele po, kutya, openi kashi na unene oshilonga, ou li ashike moshivilo eshi.

Oshivilo eshi otwe shi hovelele nale pehovelolajanauli ndee fiyo onena ohatu ka dimbuka mo shapu muDesemba pexulilo.

Vali ombinga inene yoshivilo eshi kai fi okutala nomesho ile okupwilikina nomatwi ashike, ndelenee ombinga ya fimana oyo ei eshi handi yandje oinhimbu yolutu lange nemona lange naashishe ndi kwetiwe kehambelero loshivilo eshi

Nokuli otashi etifa onghenda unene ngenge otaku tumbulwa oluhepo loimaliwa moshivilo sha tya ngaha, sha hepa sha fa shihe fi shehambelero. Ei kai fi mbela omhito komushitwa keshe mOwambo e i pewa okuhambelero Omwene waye naasho e shi kwete? Kalunga mbela okwe li hepeka eshi e tu hambata mefimbo li fike opo fiyo onena? Mbela evangeli la udifwa momido efele paife kali fi lemangululo leemwenyo koshiwana eshi?

ONTANDA

Aakadhonangerki otaa hiyilwa montanda yawo moupundi eti - 25-28. 6.1970, mOngwediva. Egongalo kehe nali tume aakadhona 10, omuwiliki, naSumina (ongalo) omolwoshituthi shoovula ethele.

ETHIGATHANO OMOLU OMUMVO GWELIGOLO!

Ewilikongundu lyoshituthihambelero shoovula ethele (100), moshigongi shalyo sheti-11.4. 1970 sha gongala mOniipa, olya dhimbulula kutya, elongekidho lyehala lyoshituthi kOmandongo, otali pula iimaliwa yi vule R 5,400; ihe iimaiwa mbyoka ya yoololelwa elongekidho lyehala ndika, itayi siikile omwaalu aguhe, opo omalongekidho ga tsakanithwe nawa.

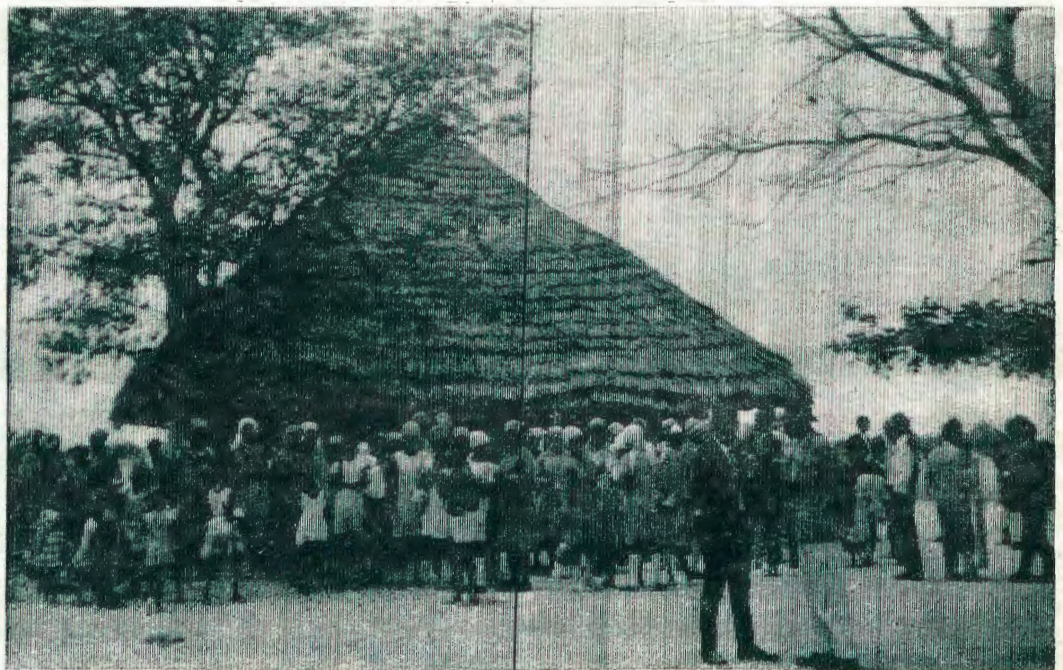
Onkee ano, ewilikongundu lya tokola pu ningwe omathigathano momagongalo agehe okugongelela oshituthi shokOmandongo.

Shaa tuu egongalo ndyoka lya mana okugongela sha, nali shi tumine kOmbelewa yongerki manga eti-20 lyaJuni iinaali thika.

Hamagongalo ageke taga tegelelwa methigathano ndika, ihe omukriste kehe, nando ke li mOwambo, ota hiyilwa wo methigathano ndika. Shoka e shi gongelele omumvo gweligolo, ne shi tumine kOmbelewa yOngerki manga Juni inaagu pita

Ethigathano ndika otali ka tseyithwa mOmukwetu shaa lya pu okugongelwa.

Peha lyewilikongundu
M. Ngipandulua
naH.D. Namuhuja



Egongalo alihe lyaMpundja otali monika lya gongala mpaka pongerki ndjoka tayi longithwa okathimbo kowala. Ongulu nando ya fa onene ihaa gwana mo nando, oshoka ohaa gongala nawa. Ongundu yiilonga yiikaha tala efano mepandja 4. Efanokombanda olya kuthwa kongerki yaShakati manga tayi tungwa. Lasha ehiyo kepanja 8.

UUPUNDJA WA TONGOLOLA NENGE WA TIDHWA

Ukilila uuzilombugantu wegongalo lyaNii-mwandi, Uukwambi, nena to aadha ehala eshona lyowala, ihe omimvo dha piti ooni-me niilikama yilwe oye li simaneke, oshoka mpeyaka ominzile dhomisati nodhoomwandi otadhi talaleke evi lya nika ombuga naakongo olwindji ya adha mo shoka ya hala.

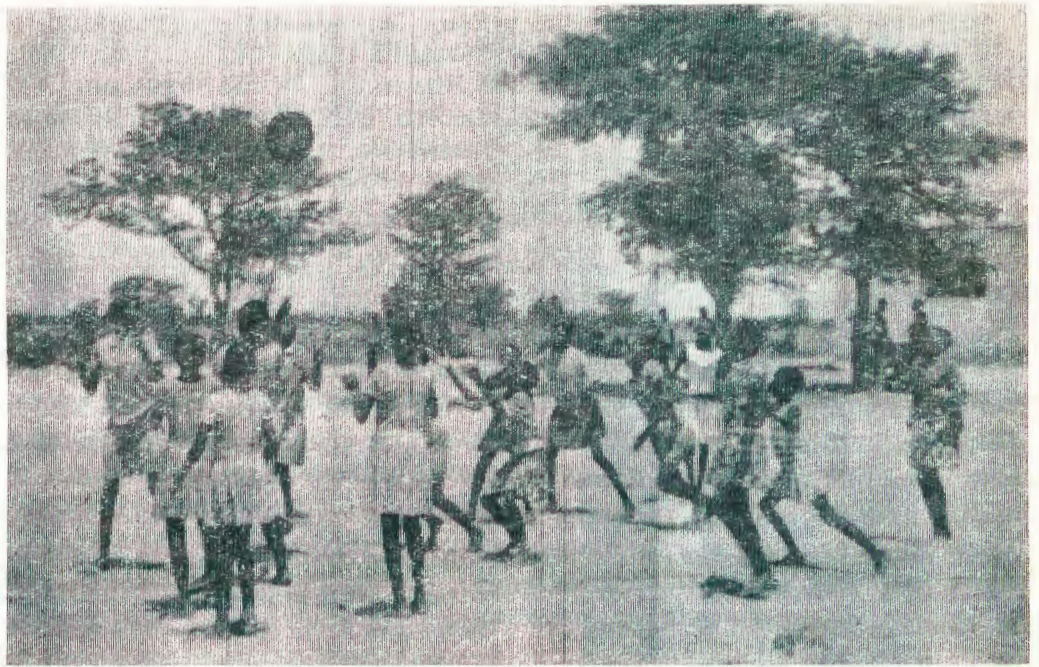
Moka aanangeshefa yongashingeyi otaa tsinine po owala niihauto yawo nge yi ihila kehuga komatale mombuga. Uulithilo wolela nomapya gomupondo, mbika oya hili aantu yaandja liyela yaAshipala (Aakwambi) ya dhike po omagumbo gawo noya ninge aagondji yomominzile dha li hadhi tilitha. Ngiika opo mpoka uupundja owa li we ya tala nokutongolola nenge ye u tidhaatidha, onkene ya luku po **Ompundja**.

Ehistoli lyaMpundja olya tulwa omulyo unene koshilongatumo shoka sha tamekwa mo komapenda ngashi ootate Leevi lipinge, Martin Hakweenda na Oiva Nambinga. Ngashi Omuwa mwene te shi tumbula mokana kajesaja kutya: Oohapu dhe itadhi igalukile owala, ihe otadhi longo shoka she mu oopalela, osho wo nomOmpundja odha longo oshilonga shadho, Jes. 55:11.

Ehala lyiilikama olya ningi eha lyelongelokalunga, maagundjuka, maakuluntu, nomaa-nangeshefa yomOmpundja. Omumvo 1967 nenge konima nokuli manga aantu yalwe taa tala Ompundja kutya oshinagoga showala, yo Aampundja yo yene otaa itala kutya yo egongalo lya gwana po nando kali na omusita. Onkene paitaaloo ndika oya tameke okuumba ongalo omolwiipeleki yongerki nando ka kwa li efaneko ya ka mone omusita nando.

1 lyaKotomba 1969, osha li oshikwahistoli mOmpundja, uuna ndoka egongalo ndyoka olya yalulilwa mongonga yomagongalo gongerki yaElok, nomusita omupe a langekwa mpoka Rev. Hiskia Haufiku. Oli na aakwa-negongalo 1974.

Onakuyiwa yegongalo ndika otayi shilipalekwa komwaalu gwaagundjuka ye thike 100, naanona yosikola ye vule 400. Ku na omutanda ku na oongombe, onkene pe na aluhe enota lyomulongi a pita oseminali a



yakule egongalo ndika lyokomeho. **Ninga ano mbala eindilo lyoye.**

Nakuhokolola ongomukuluntusikola ota pandula unene elongelokumwe neitulomo alihe, ongele maalongi pamwe nenge maalongwa miinakugwanithwa yawo ayihe. Ihe omutondi guuwanawa auhe opo e li wo.

Sho tu shi kokule ihaku thikwa ongula, aanona nosho wo aavali otaa hwamekwa nge tatu longekidha omaudhano ga nyanyudha. Mugo aasindani otaa topolelwa oondjambi notaa kumikwa okugongala aluhe nokudhiginina iilongwa. Otaa endithwa wo pomahala galwe, opo ya tale noyi ilonge wo ehumokomeho lyopalwe.

Mwaayihe mbika opo tu pite nawa, itatu dhimbwa okutumbula tate Samuel Ambunda, omunangeshefa ngoka he tu kwatha iinima okutopolela aanona oondjambi dhawo nenge oku ya enditha moshihauto she. Omumvogu e tu pe iinima yooponda 100, nuumvo katu shi wo ota ka ninga ngiini. Kalunga ne mu gwedhele ko a kale inaa hepa sha. Osho wo yalwe mboka haa iitula mo meyakulo ndika.

Egumbo lyomusita olya tungwa moompa-

dhi oontalala, nomasiku hamale we u mone iipeleki tayi adhima mpeyaka popepi nombuga kombanda yongerki. Nena ehala lyokuvululukilwa iiyamakuti otali ningi eha lyelongelokalunga. **Gabriel P.Uunona**



Omukuluntusikola Gabriel Uunona komeho kolumoho pamwe naalongi pamwe naye. Ayehe yahetatu oya humbata komapepe gawo eputudho lyegongalo lyokomeho. Otaa pumbwa egalikano.

Ebandulo

Ohandi pandula ovanyasha vokotavi mewiliko laT. Shiweda, molwekwafo leni mwe tu kwafa nalo, R2.26. Ohandi tumbula ngaha, Omwene Kalunga ne mu pe oupenda opo mu kale ovakwaita mwa pendapala shili mokulwifa omutondi. Djaleni ekwamo leitavelo olo oshikeelelifo shomukriste opo tamu dulu okuya moita.

weni R. Ndahafa Abed

O. S. Ndevahoma, Oranjemund - ota ti: Ookaume tu haleni tete elao lokomwenyo osheshi lokolutu otali xulu po. Ovanelao ovaava ve na omitima da yela, osheshi vo tava tale alushe Kalunga.



Uudhano wetanga otatu nyanyudha unene aanona posikola nohashi vululukitha omadhiladhilo gawo. Aamati otaa iidheula aluhe okudhenga etanga ndika omolwomathigathano gomoontanda.

Kalii po nawa.



Rev. M. Hauuanga

Kaleipo nawa

Welwitschia: Omu na eefalama eyuvi niihupe, omo nda kala hai talele po ovamati Ovawambo ovo tava diinine oimuna, kaleipo nawa!

Ovenduka: Omo nda kala eedula 5, okuyakula ovamwameme. Omo nda kanifila mo eenghono dolutu. Omu na ovaitaveli va xwama lela. hai ti, kaleipo nawa!

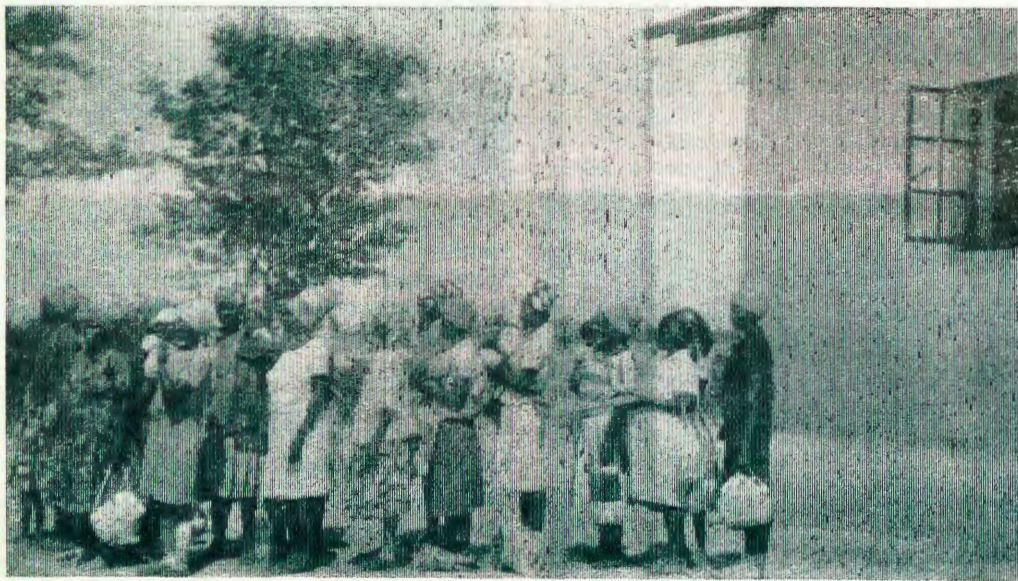
Oliindili okalando kanini ka tungi wa kekuma loshana shefuta. Okala-

ndo ke yadi oiwana yomaludi elili nokulili. Omo mu na ovakristelela. Ovawambo va mo ihava popi Oshisherero nge tava popi nOvawambo vakwawo. Ohava popi Oshiwambolela. Omo nda kala efimbo lixupi omu na ovakwaneongalo ve hole okuuka mongerki Oshoondaha. Omo nda fiya eyoo lange. Vakwe, Ova-liindili inga ndi mu pula eyoo lange. Kashi na nee mbudi. Kaleipo nawa!

Edivaleendombe, Tsumeb: Omo nda kala efimbo, omo mu na etanga lovakulukadingudu veilikano. Ovo olamba meongalo eli. Hai ti! Waima! Omulongimina, nomeefaalama domoushiinda: "Tala odjona yaKalunga oyo tai humbata po omatimba ounyuni.

Amushe ovo mu li moilando omo nda kala, ohatu mu pandula eshi mwe tu yakula osheshi one ovakwafi vetu. Meme nounona ohatu mu yambeke atushe. Omwene ne mu yelifile oshipala shaye ye ne mu file onghenda. Ngenge hatu ka fika poshivelo sheulu meumbo laTate, inapa kala umwe ta fyaala ondjilakati. Ame omupiya omuhefi mokati keni, inamu efa oku tu ilikanena. Omwene ne mu yambeke alushe. Kaleipo nawa, ee!

Malakia Hauuanga,
Engela-Hospitaal,
Pk. Oshikango.
Owambo.



Osoondaha kehe ongundu yoshilongatumo megongalo mewiliko lyameme Laimi Haufiku, ohayi gongala motundimbibeli negalikano. Ohaa kundathana wo iinama tayi nkundipaleke ukriste megongalo nomomagumbo noku yi galikanena

OHO LI TUU?

Omunhu ihaa li sha, ile iha kuta oshifima, ota dimbulukiwa diva eshi e na ounghundi wondjala noita dulu okulonga sha. Omunhu omwenyo waye tau fi ondjala. Ngashi ondjala yoshifima tai kufa omwenyo molutu, osho yo ondjala yokomwenyo tai kufa omwenyo mokwaashikula Jesus notai e ta ouhasha, o-

masheko, outondwe, oukolwe nohole youlunde, nokeshe tu osho sha fa aishe ei.

Okulesha Ombimbeli okwo oshitelekela sha kula omo omwenyo tau kutifwa keendjovo dOmwene, nomwenyo otau kala we likolelela.

J.J. Nambwanga

Ondi na okuninga shike?

Unene momudo ou 1970, omudo weedula 100, efimbo lokakambe katoka taka tondoka medu lOwambo elipulo eli ola pumbiwa.

Ondi na okulonga shike ndi longe oshilongatumo mOngerki yetu? Tete Kalunga na hambelwe eshi twa fika modula ei notu na oshilongatumo momaoko etu. Onghe epulo eli nali nenepale momwenyo woshilyo keshe mOngerki yOwambo-kavango.

Odula yo vene otai tu tu omukumo kutya, epulo keshe otali mononyamukulo osheshi oyo enyamukulo linene olo Kalunga a nyamukula nalo Ovasoomi moshilonga shavo shetumo medu letu. Onghe epulo eli la tulwa momake etu. Vahapu va mona nokuli enyamukulo shashi va hovelale nale nokuli okulonga, ashike otava pumbwa etwikilo fiyo va longa nokuhanga ngenge Kalunga e shi hala eedula 100, ngashi ovatumwa ovaholike va ninga.

Ndelene oku na ovo inava hovelale natango va fa ve lewete ehovelo. Natu endulule kanini eemhito odo Kalunga edi kupa. Oku li yandja ove mwene, tala eedula 100 havasoomi aveshe ve ya kOwambo nO-kavango ndelene avesheveshe otavalongo oshilonga shetumo. Eemhito dokulonga ngashi okukufa oimbale, oidjalomwa, omishi na unene eilikano.

Ino dina eshi u shi kwete Kalunga ita pula osho uhe shi na, oye eku pa aishe. Inandi hala okudimbwa Ovangenga tate Adolf Hangula, ova li va tuma oinima momudo ou wa ya oyo imwe yomuyo ya kwafa nge molweendo. Ovakwaita ovaholike Omuwambo ota ti. "Ongghenda oya isho ha yamutima" vali "omulongelo ohau kufa ukwao melimba." Oixuna eshi handi ende mokati kOvayelege va hepa, okukonga onunona ndele nghi na sha oku va pa, ohai shi hange peni ndishi okwooye. Oto teelwa noneudo, longeleni Omwene.

Lot Kaishungu

OSHIGONGI S'HA'ASITAGONGALO

Epangelongerki otali hiya aasita yOngerki yetu Elok, koshigongi shawo mOniipa eti-17-20.6.1970, ya thike mEtitatu koshiwike monti-5 komatango, opo ya monathane wo naayenda mboka taa zi kuSoomi ethimbo ndyoka. Otaa indilwa ngoka e na sha shi-kundathanwe moshigongi, e shi tume mbala kombelewa yomumbisofi.

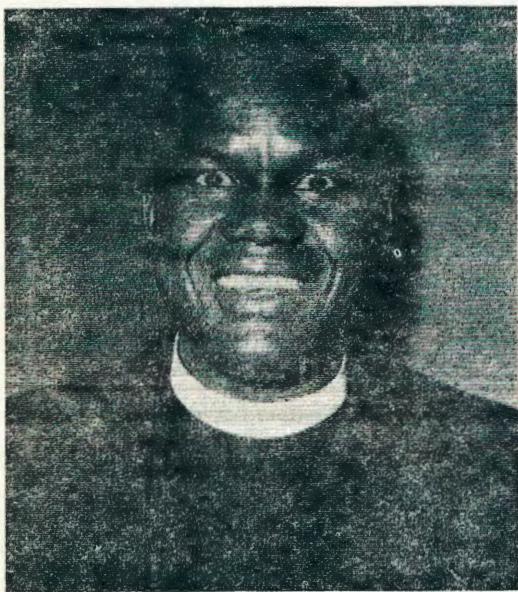
Ino hala okushiiva Ombibeli yoye?

Ope na omhito imwe iwa unene okulihonga Ombibeli. MEngela omu na ongudu imwe ya lukwa **Enongelo IEenhumwafo**, hai wilikwa kumeme Aili Mwatotele. Oto mono odjapo.

Mofikola ei omu na eengudu 1 fiyo 8, mukesho ongudu ngenge we i shanga pamanyamukulo oo wa pulwa monhumwafo keshe. Okulihonga oku itaku pula okuya kEngela, okuke lihonga, aye, oto lihonge ashike meumbo leni, ile moilonga yoye ngashi mOushimba.

Apa onda hala ndi ku lombwele manga ino hovela okutuma eenhumwafo doye. Mokulihonga omu na yo oinima oyo ito dulu nande oku i longifa. Ihadi endelelwa, diladila tete epulo eshi tali ti, opo u nyamukule nawa.

Ino yandja kumukweni e ku shangele po dimwe. Okupula inaku keelwa, ngenge oto pula kumukweni. Okukala nodjapo ino i lihongela oshiponga, nosha puka unene.



Jason Amakutuua

Itandi etha okupandula aana ya Pamba taa longo mUuninginino wetu momapya getumo.

Ongandjera; oyi na Amarika, Otoongo, Iitapa, Uutsathima, Onamatanga.

Uukwaluudhi: Okatsheyidhi. Uukolonkonkadhi: Ombombe, Ongwali, Iitshanaputa, Etoto, Otyovanatse, Etunda nOmindamba.

Uukwambi: Elyalyatika nOmusati gwaNiita. Aanandjambi taa longo metumo otaa futwa R2,308. Oye vule omilongo ne.

Tangi aakwetu komakwatho geni. KONiimwandi Lasarus Kambwili (omupupulu) Wilika Kambwali na yina Ester Iilweenya, oya tumu

Lungamena ounye. Eenima edi odi fifa ounye, osheshi oto ka hanga mo epulo, ndee wa li nee, oto papala ashike eshi wa tyololoka nokuli. Hano ngenge wa hange epulo lidjuu, ino li kondjifa, inda ashike u ka longe eshi to ka longa, ove mongula to li alukile. Komukalo ou nena oto shiiva nawa Ombibeli yoye, noto shiiva yo ongonga yee-tekisti domaudifo.

Nokuli ngenge owe lihonga nawanawa, aye, mongerki shimha tu kwa tiwa tu lesheni Mateus etukulwa 5, nena ou shii ashike nawa kutya ounelao tau udifwa apa.

Osho ngenge omuudifi a fa a panuka mo mongonga yotekiste ndee ta xwateke, nokulundila otekisti, aye, ove ou mu wete ashike, osheshi ou shii kutya otekisti otai ti ngahelipi. Ino hala okushiiva Ombibeli yoye?

Omhito ei ohandi i mono ngahelipi? Kufa ashike eesenda 35 ndee to di tumine oku: **Enongelo IEenhumwafo, Engela, Pk. Oshikango, S.W.A.**

Ou u li mOmaonda onawa ngenge to kufa eesenda 35 ndee to i kopoosa u lande oposorder opo u shiive okutuma nawa. Likongela omhito ei kaume, ovanelao ovaava hava lesha.

Israel Neumbo



Israel Neumbo

ODULA ESHI INAI LOKA OMOLWASHIKE?

J. Mandume Hamunyela weedula 17, ota nyola ngaha:- Onda diladila Omwene a dja po pufye osheshi omanyono a ninga mahapu. Omushi tuu kutya odula eshi inai loka omolwashike? Paife ovanhu tava ningi osho inashi wapalela Kalunga. Kaleni mu shi shii kutya, ngenge itatu linekele Omwene, ote tu nyonaunapo diva.

Oita kaimba oi li popepi ngenge itatu lidilulula. Oshitukulwa sha-Kalongo inashi mona nande odula neudo. Ame onda dile moshitukulwa osho nde onda tila unene.

Etumo mUuninginino

oshipakete shoonguwo. Tomas Nakambonde okwa gandja uungangalala uyali uupepeka, okwa zi ishe- we oshipakete shoonguwo dho opala kuyalwe.

Kokagumbo Otshandi, okwa zi oshipakete shoonguwo noothewa niimaliwa R2.88.

Lilja Iitenge okwa tumu R1.00. Kaahongi Aasuomi mewiliko lya muhongi Matti Seppälä oya tumu R144.00.

Aambawe oya tumu oshipakete shoonguwo ndele aatekulu yakuku taa ipoleke mo.

Aakahandja oya zaleke aantu yokuAmarika sho ya tumu oshipakete shoonguwo na R12.43, nomapando goongaku.

Omadhina geni Aakahandja gombapila yeti-6 Desemba 1969 Posbus 176, onde ga totomonene Kalunga mokutsa oongolo, moka nda adha edhina lyomuhona Van Wyk naMwiishishi gwe ya gandja ee- ma neengaku. Mbika yeni oya to-

polwa kuAmarika 28/3/70.

Magdaleena Shiyagaya okwa tumu oshipakete shoonguwo na R5.00.

Otandi mu pandula amuhe namboka ine nyola mpaka mbo mwa pe ndje peke nokuli, nge omizalo nenge iimaliwa nenge iilya. Onda hala ndi mu pupule komugongo ngaye tandi imbi te ti.

“Kalunga kaNangombe
Aamwoye yambeka
Sho ye ku pel' ompembe
Pamba ya lyateka,
Ya kale taa ligola
Yo inaa pongola
Ya ze mo menyonkolo
Ye ye mondigolo Amen!

Ote pandula unene kune amuhe tamu galikanene oshilonga shetumo mAakwankala nenge mAatshimba nAadhimba nAankwankwa nosho wo Aangambwe nAahimba.

Otamu ka pewa oshishani itaashi ganya.

Tshiteyi
Jason Amakutuua



Omwevangeli Hadula okwa li e lilongekida nawa okufya

Erastus Edward Hadula, a dalwa 10.12.1900, momukunda Onhanga muAngola. Oita yOvaputu nohamba yOvakwanyama, Mandume Ndeulikufa Ndemufayo, eshi ya handuka, ovahongi va fiya po oshikokolaongalo mOukwanyama nde tava i kOushimba. Ova ya nee nokamati Erastus. Tashi ti oye okwa shashwa kOvadowishi.

Omudo 1926 okwa mona eifano mokulongela Omwene waye. Okwa kala omuhongi eedula 10 muSwakopmund, nokonima yaashi okwa shita mofikola youyevangeliste. Okwalonga unene nokwoongela Ovawambo eembwiti novaunguli pomushiyakano waKristus.

Okwa li yo a pewa omaano omalaka ovadalelwa mo, nolutu la kola. Eduliko muye okwa li tali monika alushe okudulika kovakulunhu vongerki ovo have mu longifa, noshe mu wendelako omaano mahapu.

Omudo 1936, omweevangeliste Erastus a tumwa kOshivanda shOngwe (Grootfontein). Okwa ka yakula tete moshinagoga yeongalo laShivanda, momina yAbenab, omo mu na ovalongi vomina 500 lwapo. Omuhona womina okwa kala ine mu hala nawa, okwa ti:

“Opo u kale omuudifi apa, omutenya ou na okulonga oilonga yomina, oufiku ovanhu nge va dimbuka ove to udifa nee.” Opo nee okwa pewa ombike noshixupulo a ka longe. Ova diladila nge ta xwi-kwa koilongifo ei, ta shuna shito oko a dile.

Okwa lundululwa mo natango moilonga ei nde ta twalwa mofuka, okuteta omakuni. Ta lundululwa natango nde taka pomba omeva omutenya noufiku, opo natango a tulwa mokambelewa a kale ta shanga eetekete davakwao nokate-mba oko haka yuka nako oimbo-di moshilongo a ka ekeleshi koshalala. Ependa Erastus, ashishe eshi inashi mweneka oshilonga shOmwene muye. Omafimbo oo e hole okwiimba, “Nge tamu mwena owala omamanya otage mu pe uusama.”

Okwa ifanwa ko kuAbenab aa-

lukile kOshivanda. Eongalo alishe okwa li le mu teelesa nehafo. Otavi, Kombat, Rietfontein, Okauva, neefalama dihapu oda mona oshipala shaye. Okwa kala ha'ende nombaishekela.

Okwa panga oukaume novahona voshilongo, noshilonga shaye sha mona eameno. Ye a kala pokati keengerki edi mbali, mOushimba noyomOwambo. Oilyo yomudo e i longa oukumwe.

Oye kaume kovatumwa vahapu mOwambo, ovafita novalongi. Ongerki yaElok eshi ya tuma Jason Haufiku naJonatana Kostantinus okuyakula ovamati vomehalakano kOshivanda, nakufya Erastus e va tambula onga ovana vaye. Erastus okwa longa nawa oshilonga shOmwene.

Konima yeedula edi, a kwatwa keloloko linene, nomesho a pwa eenghono. Omesho a twika, olutu la nghundipala nai, osho tashi nyengana meongalo a pulwa, nde sha yukifwa kenyamukulo laye. Okwa longa oshilonga shouhakumwenyo, nande e li omutumba meumbo. Ye ina itavela eongalo li piyaanekwe, oha kwatwa komhango nde ta mweneke omhepo oyo. Osho ngaha eongalo ola kala la xwama neenghono.

Eshi ita mono ko vali, okwa xumbata Ombibeli momutwe. Okwa longekida eflyo laye manga a li nomwenyo. Tete okwa longekida o-

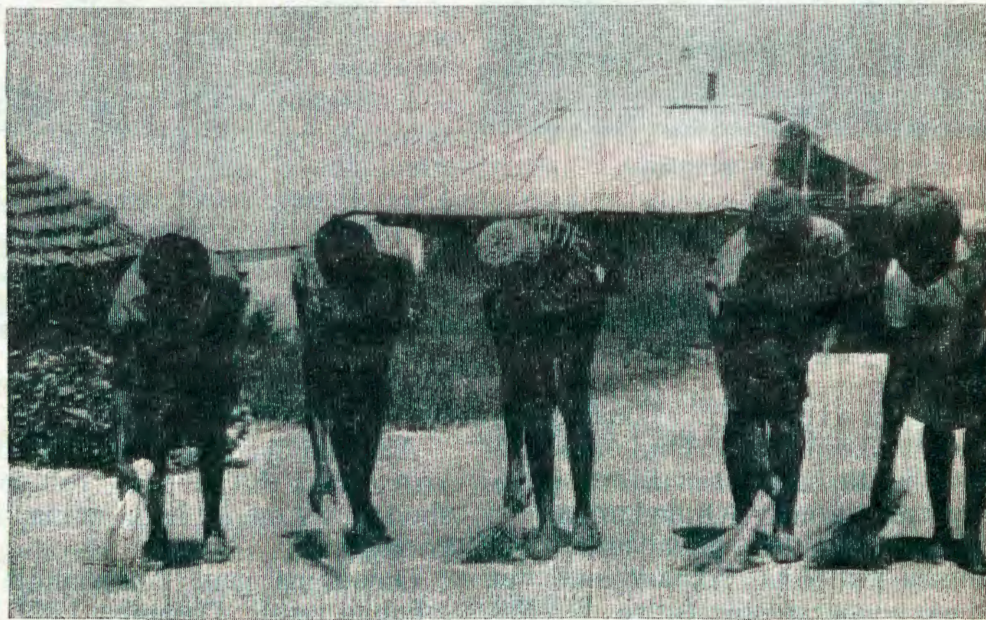
mwenyo waye u lumbakane no-mwene waye. Okwa longekida yo eflyuululo, omukulukadi waye a hanyekwe neefya daye odi na okufilwa oshisho ngahelipi. Ombila yaye okwa indila i yapulwe kuRev. Malakia Hauuanga. Okwa lombwela omukulukadi waye “Nge nda fi ino lila nge nande, osheshi inai fya, onda kofa po nohatu ka monafana natango.

Eti-17.2.1970, ependa letu ola xulifa oweenda. Okwa twalwa mongerki neongalo alishe ola ongala nola nangala poshivelo shongerki tali imbi omaimbilo etumo.

Omutaleli omukulunhu Reinhold Kayele nomweevangeliste Sakaria Nashongo va kumika ovanhu, nomufiyekadi meme Fenni a kala e na omukumo waJesus. Eti-19.2.70 ookaume ove uya okufindikila ependa eli komaendo, opo pwa li pa ongala ovafitaongalo 5. Poaltali opo pa li pa nangala omudimba waye, opwa leshwa komufita weongalo olo eendjovo odo nakufya ye mwene e di yandja fimbo ina fya Rom.8:25-39. Pa etwa omakundo ehekelekomukumo, nekundo lEpa-ngelongerki la leshwa opo.

Opa li ongudu inene osheshi ovahona veemina, poushiinda waShivanda, ova tuma oihauto okweeta ovanhu kefudiko. Ashishe sha ulika kutya, okufila moshilonga shaau e ku ifana mo, oshiwa.

Malakia Hauuanga



Eendjovo daKalunga tadi tu lombwele: “Longekida eumbo loyesheshi oto fi.” Mpepo lyapuki oye omukombi weemwenyo detu. Omwenyo u yadi oihelele oo inau wapalela etembu lokufika keumbo laalushe. Tu yandjeni hano omaumbo etu meke laKalunga.

O U N Y U N I O T A U T O N G O S H I K E

OVANYONI TAVA KA PWILIKINWA

Omhangu yovalumenhu vatano (eeterolis daSuidwes) ovo va indila va pwilikinwe natango mombelewa yaxuuni-nwa osheshi inava itavela etokolo lotete kutya, ve na okukala modolongo moku-kalamwenyo kwavo akushe, paife ova itavelwa noshiimba otai ka kala ko mu-Aguste neudo muBloemfontein, Suid-Afrika. Eshi osha shiivifwa kombelewa yakula yaVenduka.

Ovalumenhu ava ovo:- Messack Victory, Yustus Festus Heita, Salomon Festus Heita, Josef Ipangelwa na Gaus Shikomba.

Omulumenhu omutihamano Jonas Shimwefeleni, naye okwa indila a pwilikinwe natango nokwa itavelwa pamwe navakwao. Ye okwa li a ufilwa eedula 18 modolongo.

OYA LONGO PAMWE NOMAGALIKANENO

Oshituki shaAmerika shoka sha li sha tumwa shi fale aantu komwedhi eti-11.4.70, inashi sindana molweendo nduka. Osha galukile ondji-lakati omolwetopo lya holoka mu-sho sho sha dhengwa kosha.

Manga Lovell naHaise yi ipyaki-dhila nokwoopaleka okashinagona nkoka ke na oku ka nambela komwedhi, ohaluka okwa uvika edhengo enene ndyoka lya yono ombinga yimwe yoshituki, ano eshina enene (moederskip). Olusheno lwa kanitha oonkondo omolwedhengo ndyoka lya dhenge omashina goshituki.

Aalumentu mbaka oya tseyithile mbala uudhigu wawo kevi. Oya lombwelwa ya tale ngele tashi vulika ya galukile kevi manga oshiponga shahugunina inaashi holoka. Uuyuni auhe owa kala megalikano opo aalumentu mbaka ya hupithwe moshiponga.

Omakanda oga li ge na okulonga nokukondjela oomwenyo dhago ngaashi tashi vulika. Inaku tseyika oya kala ethimbo li thike peni mepangelo lyoshituki shawo.

Oya kambadhala ngaa okudhingo-oloka omwedhi lumwe noya galukile kevi. Pailonga yawo yoshimati ye yi longo opo ya hupithe oomwe nyo dhawo, oya thiki kevi- 17.4.70 otundi 8.06 komatango. Oya gwile mefuta lyaStille nosikepa yaAmerika oye ya toola mo.

Aalumentu mbaka ya li moshituki shika noya thiki ye li nawa oyo James Lovell, Fred Haise naJack Swigert.

Viëtnam

Aakwiita yaAmerika 41,516 otaku tiwa oya sila muViëtnam oomwedhi 9 dha piti, na 273,436 oya ehamekwa, ihe aatondi yawo otaku ti oya sa 624,573. Richard Nixon, omupresidende gwaAmerika okwa ithana ko nale aakwiita yamwe ya shune kegumbo. Natango okwa tegelelwa 150,000 ya shune, oshoka okwa tala okufupipika aakwiita ngeyi osho ashike tashi eta ombili miita mbyoka ya kala oomvula o-dhindjidhindji.

Omwaalu gaakwiita yaAmerika muViëtnam ogwa li gu thike 549,500, ihe ngashingeyi 265,000 ashike.

OLUTENI

Odula eshi inai loka nawa neudo, Suidwes alishe ola kwatwa kondjala inene yoimuna. Suidwes alishe paife otali inyenge omolwoshinima eshi, novanafaalama ve dule 100 ova nginga omaindilo avo koshikondo shoimuna shepangelo opo va tembukile koulifilo umwe langhele koumbangalanhu waSuidwes.

Eepeleka daGibeon, Windhoek, Karibib, Rehoboth, Omaruru, nOkahandja odi li paife metembu eli. Oko koulifilo oo waMangetti-blok, okwa tengenekwa kutya, shiimba otaku ka kala omaufita eengobe e dule 36,000, neemboola 50 oda longikidilwa nale moshitukulwa osho.

Etseyitho kaakongindjila

Ontanda yoshitayi shaakongindjilakadhona mOwambo otayi ka ningwa eti-18.6.70 sigo 25.6.70 mOndonga kuuzilo wOnandjokwe, oomaila 2 okuza kOnandjokwe.

Aakongindjila mbaka ya kala momatanga ngoka Oniipa, Okahao, Kongo nOshakati noya gandja euvaneko lyuukongindjila taa tegelelwa nenyanyu. Unene aakongindjilawilikitameki mbaka taa longo pomahala gi ili nogi ili aalongi naakambadhale okukala montanda ndji, opo ya vule okutameka omatanga gawo omape komeho.

Ofuto yontanda R1.50 kaawiliki naawilikitameki ihe aakongindjila aanona kuKongo nokOshakati taa eta iikulya ngaashi; uusila ondjuhwa enyangwa n.s.t.

Aawiliki yomatanga naa tseyithile omwaalu gwaamboka ye na ompito osho wo aawilikitameki aalongi mboka ye na ehalo okuya naa tseyithile mbala omukuluntu gwaakongindjilakadhona Raija Salmi, Onandjokwe.

ONGUNDU OMPE

Ondangwa:

Oombilive dhokwiindila ezimino lyelongitho lyongundu ompe (party) odha nyolelwa kepangelo lyaSuid-Afrika nolyOwambo kuJohannes Jefta Nangutuuala, Oluno, Pk. Ondangwa. Ongudu ndjika tayi kambadhala okuholoka po lwotango okuza uuna oSwapo ya fumvikwa. Omusamane Nangutuuala okwa ti kutya elalakanano lyayo okulongela kumwe nepangelo lyoshigwana muSuidwes-Afrika, nokukandula po ashihe tashi keelele ehumokomeho lyoshigwana, niikondjitho yayo ope na nelaka.

Oshilyo kehe shoshigwana shomuSuidwes-Afrika osha egululilwa omweelo koparty ndjika. Edhina lyayo "Demokratiese Koöperasie van Ontwikkelingsparty. Omapulo agehe taga holoka okupula sha kombinga yongundu ndjika, otaga yamukulwa kuJohannes Jefta Nangutuuala.



Raija Salmi

Iipumbiwa yomontanda

Kehe gumwe ota pumbwa okampunda ke niinima yokulila mo; oshimbele, olufoloko, olusindo, okakopi, oshiyaha noshihanduke.

Iinima yokwiiyoga: Oshiyaha shokwiiyogela, othewa, niihanduke 1-2 okakombe komayego, noshikamule. **Iinguma:** Ohema yuusiku, (olakana) omakumbyatha 2, okagwilo noshikayiwa shokomutse.

Iizalomwa: Ohema yomukongindjila; oohema 2 dhilwe, ombindja, ombulukweya onde, ngele pu na, oonguwo dhokohi, oshitetahema, oongaku noonastuke.

Iinima yilwe: okatoshe, ombimbeli omaimbilo, Imbileni Omuwa, opena okambo kokunyola okakalata komakonakono, onane nongodhi yokuhondja.

* * * * *
Mosoondaha otu na elongelokalunga naashiinda, aayenda otaa vulu okuya.

Omahanganotumo muELOK 1969

Nomumvo nguka gwa hulu omahanganotumo muElok oga tsikile iilonga yago ngashi shito. Nepandulo enene tatu simaneke omahanganano ngaka ga kondjo okutsakanitha iinakugwanitha yago. Ehanganotumo lyaagundjuka olyo lyotango mokusindana ngashi shito. Aagundjuka ohaa futu nokuli oondjambi dhaatumwa yatatu oyo: Edward Nghimwena kuKongo, Frans Kankondi kUutsathima naElias Misse kOmparara Kavango. Ehanganotumo etiyali mokusindana olyo Ehanganotumo lyaApangi, ndyo ka hali futu oondjambi dhaayevangeliste yaali: Frans David kuKongo naJonas Shikulya kEtundamindamba. Ehanganotumo lyaasita ohali futu ondjambi yomuyevangeliste Timoteus Jakob kuKongo, olya nyengwa okupita. Ehanganotumo lyaalongi olya tameke lwotango okufuta oondjambi noompumbwe dhaKoshuis yokEtunda. Mpaka otapu landula iiketha yomahanganotumo ngaka, kakele lyaagundjuka ndyoka oshikethatumo shalyo sha gonyenwa moshiketha shaagundjuka:

	Aalongi	Apangi	Aasita	Aanangeshefa
litaambwa	686.29	376.28	474.90	79.00
lifutwa	200.00	360.00	474.90	79.00
Ongunga.....	263.85	227.88
Oshihupe.....	486.29	16.28
	686.29	376.28	738.75	306.88

ETSEYITHO

KOandjokwe otaku pumbiwa omuntu ngoka a pita ostanda VI nenge e na onzapo yongundu yi vule mpoka, opo e ki ilonge iilonga yomOlaboratorium. Ngoka u na ehalo holoka komukuluntu gwoshipangelo mu kundathane.

Omukuluntu gwoshipangelo, Onandjokwe.

OMWE MU HOLEKA PENI?

Omunyanyangidifi wOmukwetu, omushamene tate L.M. Shemuvalula, omwe mu holeka peni, newi laye leudifo moifo ihali udika vali? Omolwoilonga yaye ihe na efimbo lo-kuudifa, ile omwe mu keelela aha udife vali mOmukwetu?

Ewi laye levangeli otwe li fila enota. Ohandi mu halele eyambeko latate Kalunga ngashi a kala nalo nale. Mu kundileni po. 2Tim.1:6-9.

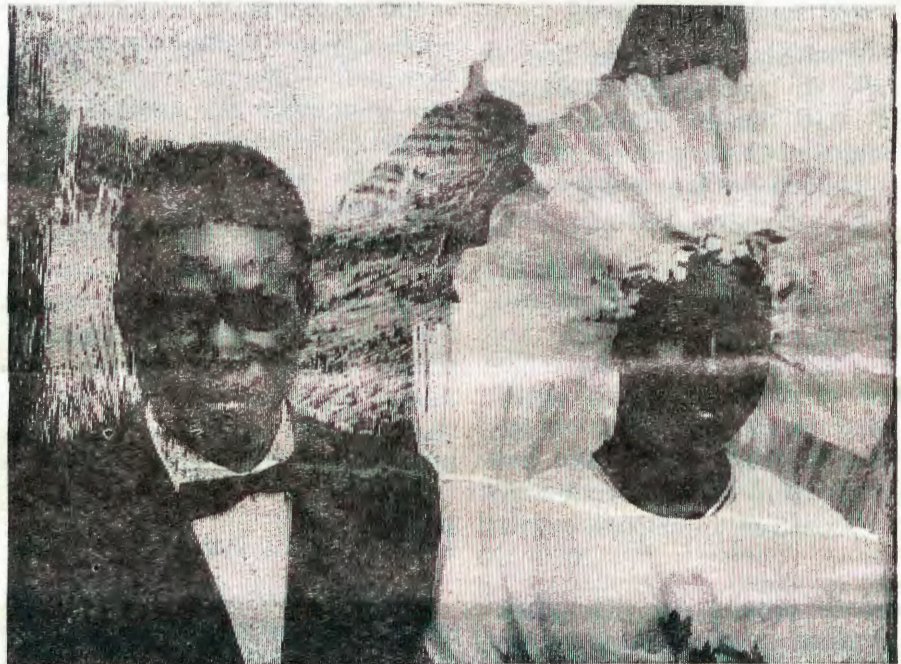
K. Shitumba, Edundja

EHIYO

Epangelongerki lyeti-21 - 22. 4. 1970 olya tokola ongerki ompe ya tungwa mOshakati, yi yapuliwe oshilonga shayo eti-14.6. 1970. Owa tseya tuu omusimanekwa Kapunda? Owa uva tuu nale nkene ta popi, Owa mona tuu nale iilonga ye? Ila ano u tale esiku ndyoka lyeyapulo. Oto hiywa pamwe nomagalikaneno goye.



Oshinyanyangidho ohashi talelwa po kaayenda oyendji taa zi koombinga noombinga. Omasiku ngaka osha li sha talelwa po komuyenda a simana Julia Asser, Eheke, gwoomvula 14 adhike. Omuholike Julia okwa kala mOnandjokwe uule woomvula hamano. Sho a talatala iilonga ayihe mOshinyanyangidho okwa hepulula; "O, ayihe otayi kumitha ndje ashike." Okwa li a thindikilwa komudiakoni Maria Heita, Onandjokwe. Julia ohe ende ashike kekwatho lyokatamba.



Oomboka haa inekele Omuwa, Oye ote ya galulile uugundjuka wawo wa fa ontsa.

OHANGO

Oshituthihango shomutekuligumbo Aune litana nomulongi Abed Mpinge Ontananga osha dhana eti-13 lyaDesemba 1969 mOngerki yaLukonda. Osho oshituthi shomutekuligumbo gwootango mboka ya putudhwa mEnongelo lyaayakuligongalo mEngela. Oohapu dhaKalunga ngashi dhe ya wilike muugundjuka wawo, osho wo tadhi ke ya wilika megumbo lyawo ngele taye dhi inekele.

BARNABAS NGHIKEMBWA ota kumaida ovaitaveli aveshe vomwene kutya, fimanekeni efiku olo linene lOsoondaha, osheshi Omwene e tu pa tu ude eendjovo daye, hano haku lihepifila moimima tai xulu po yopedimo.

Eti-10 Mai olyo esiku lyegalikano kaalongi aakriste, mOwambo nopalwe. Galikana pamwe nayo.

OMUKWETU

Oshifo shOngerki onkwaevangeli paLuther yomOwambokavango
Die Tydskrif van die Evangeliese Lutherse Ovambokavangokerk
Oha zi mOniipa,
Omukuluntu gwoshifo/Hoofredakteur Omumbisofi Dr. Leonard Auala,
Amushanga / redakteur Sebulon Ekandjo
Ondando komumvo mOwambo 70c kUushimba nOkavango 90c
Kombanda yomafuta R1.30.
Oondando nomambestelo naga tumwe kOmukwetu,
Oniipa, P/B. 2015 Ondangwa, S. W. A.
Oshinyolwa shuule
wondeimi 1 otashi futilwa R1.00
oondeimi 2 "- "- R1.90
oondeimi 3 "- "- R2.70
oondeimi 4 "- "- R3.40
oondeimi 5 "- "- R5.00
Oto vulu okutuma efano lyaashoka wa hala shi tseyithwe nomatumbulo wo gasha ngele ope na.

The Finnish Mission Press Oniipa
P/B 2015 Ondangwa S. W. A.