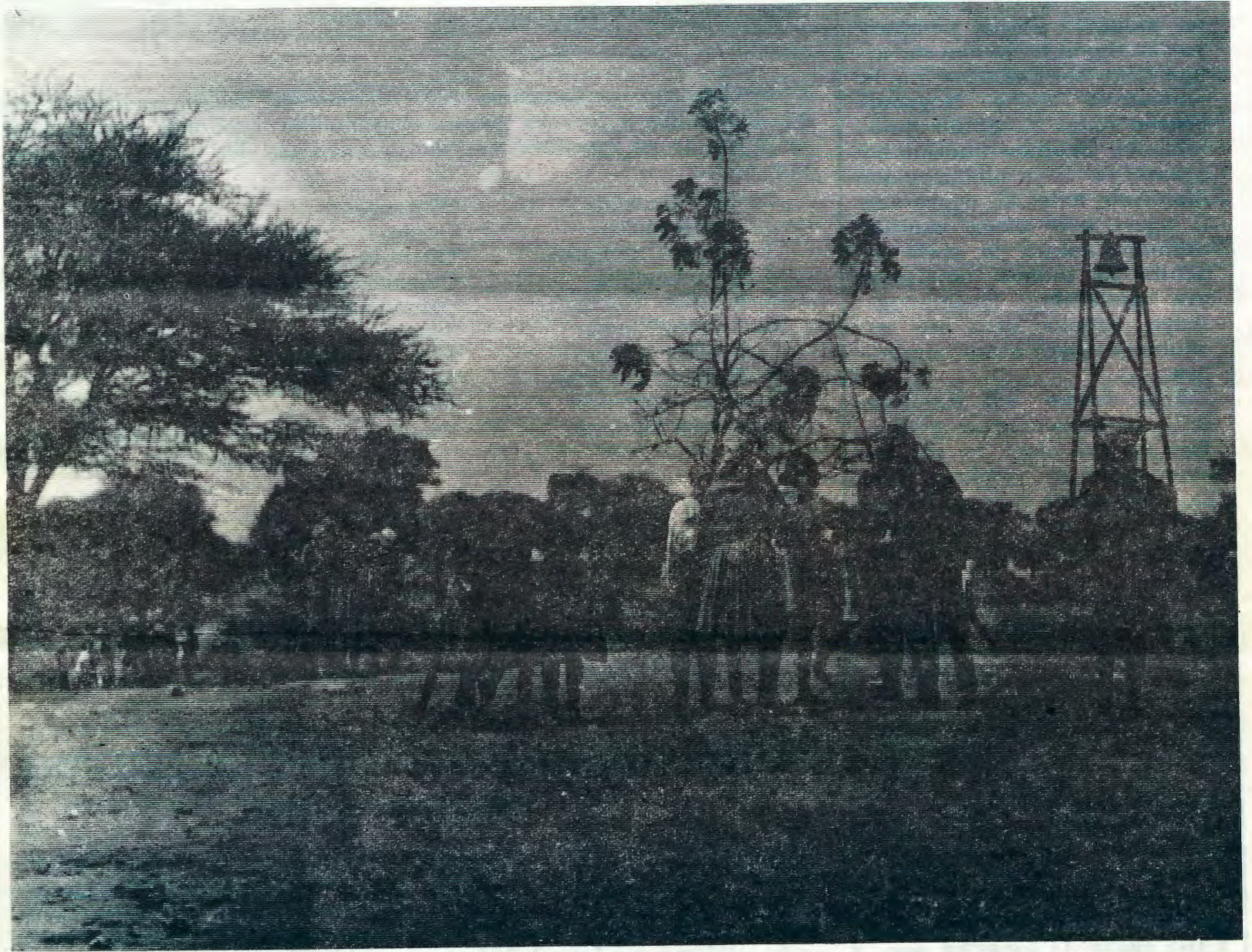


OMUKWETU



Oshilonga sha ni- ka okudhimbiwa

Okrismesa ya fa ya kuka po ishewe, nomayambeko gayo twa li twe ga halelwa kookume ketu nokaaholike yetu, otwa fa itaatu ga dhimbulukwa we.

Momadhiladhilo getu omu na ondumba onene yiimpwiyu yaa shono tu na oku shi nginga noku shi gwanitha muule womumvo aguhe. Noyendji omeho otaga tongolola mombapila dhomawilikothimbo ngaashi ya li ya adhika ye dhi iifanekele nale. Ai, ngoka kee li ngeyi oye okwa kanitha oshindji, nokwa fa shila ondhila ya tudhwa omalweenya pethimbo lyoshiponga shayo, oshoka otse otu na okulonga sigo otatu zimbulwa.

Etha ashike ndi tumbule shila oshinima shimwe ashike. Nge to shi ningi to shi landula noto shi yelekele, oto ka mona nkene to ka ya miinima oyindji wa li inoo yi dhiladhila nando kutya oto ke yi vula.

Moshimpwiyu shoye mangela mo esiku kehe, ethimbo kehe, okathimbo kegalikano nokegalikaneno. Mombapila yoye yewilikothimbo lyiilonga yomumvo onawa, gwedhela mo iitsa yontumba we yi tala oyi shi okufaalelwa Kaluuga momagalikano.

Omolwegalikano ndika oto yambekitha oyendji noto yambekwa wo ngoje mwene. Ohali lundulula ayihe, ohali vulikitha ayihe ohali yambekitha ayehe. Li longitha ano.

Owa fa wa dhimbwa po okwiinyolitha oshifo shEhangano, ondando 15c mOwambo, na 20c mUshimba.



OONTOKOLWA DHEPANGELONGERKI

1

Pwa dhimbululwa ompumbwe yomulongi, opo a kale omuyakuli gwo-mukuluntu gwookoshuis, kuku Helmi Haapanen mOngerki yetu. Omuyakuli nguka a tameke iilonga mbika omumvo 1970

2

Omusamane M. Seppälä, amushanga gwepatudho mOngerki yetu a pewa oshimpwiyu pambilive yomusita Hiskia Haufiku a longekidhe efaneko lyelongo lyoskola yekoleko lyaamboka ya piti mookoshuise, opo pu kale eutho lyiilongwa nolyethimbo lyokulonga oskola yekoleko maa-naskola yetu.

3

Omagano ga gandjwa kuTheo Muhongi, Luderitz, gomambo omolwaa-nona metumo moshitayingerki shUuninginino ga taambwa nolupandu.

4

Epangelongerki lya konakona nokukundathana naalongwadiakoni nolya dhimbulula ayehe oya gwana okuyapulilwa oshilonga shuudiakoni, nolya tokola ya yapulilwe moshilonga shika eti- 30.11.1969. Oya lange-kwe ngeyi:

- | | |
|--------------------------|---|
| 1. Silas Shalauda | Okalongo |
| 2. Ismael Iipito | Oshitayi |
| 3. Filippus Shilongo | Ohalushu |
| 4. Jafet Uudhila | Oniimwandi |
| 5. Kristian Shipunda | Omundaungilo |
| 6. Matias Shivolo | Tsandi |
| 7. Epafraas Iipinga | Elim (oshipangelo) |
| 8. Markus Kankono | Mpungu |
| 9. Jairus Kapenda | Oniipa |
| 10. Abisai Iihuhwa | Onankali maayelele, nomaapagani mookongamba dhomagongalo Onyaanya naKankolo |
| 11. David Alugodhi | Onandjokwe |
| 12. Jason Nangombe | Okahao (oshipangelo) |
| 13. Johannes Nghifindaka | Kongo (oshipangelo) |
| 14. Simon Namunyekwa | Engela (oshipangelo) |
| 15. Timoteus Muafufja | Omindamba mEtumo |
| 16. Mikael Amukoto | Tsandi (oshipangelo) |

Oya tameka iilongayakulo mbika eti-1 Januari 1970.

Osheendokonakono loshilongatumo muBotswana

Koutokelolela wetale laNgami (Ngami Meer) eeshefa (oihauto) mbali oda li tadi lotoka meshikulafano, nondwi oya li tayi monika ya fa oshilemo shodula ya hala okutemuna. Koshi yoixwa ihapu koshi yomilunga noikumino yoilya, mokati keengobe nokoshi yomau-mbo oshishawana oo a tungwa afa eexupa dovanahambo.

Oihauto aishe okwa li iyadi ndo. Okwa li tave liyakulafana mokusisinga, ova li po tava yolo vo ta va popi oinima i na oshilonga. Nde nande ongaha ovashingi kava li noilonga ipu nande.

Omiti dinene, omioonde tadi monika di li oungudu koshi yado oko nee haku xupwa eendungu kOvashawana. Ito mane okutala oufita munene woukambe oo hau xupilwa eendungu odo.

!Gu-!na oyo onhele opo pe yadi ovakriste Ovaherero ovo va ya nale oko omolwoita younyuni winya. Muvo omwa dja omakundo okukundi-la po ovakriste aveshe mongerki yaE. L. K. nomOwambo. Ponhele oyo opo tuu oihauto ya fikamekwa koshi yomiti popepi nokangerki kakulukulu, ka tungwa kuElia Kandi-

Tala kepanja 8.

Endeni neembapila deni

Vakwetu amushe keshe tuu omunya-sha wa kala moshongalele sheni mOwambo ile mongudumbibeli yasha, ngenge wa hala okuya mOushimba ile mOwambo, ino fiya po vali ombapila yoye yomafiku oo wa kala moshongalele sheni. Nde naku longifwe yo oihako yomaongalo, inai dimbuwa nande.

Abraham Haileka



UYELELE WENI NAU YELE

Mat. 5: 16

Jesus oye uyelele wuuyuni. Ihe uuyuni owa li u hole omilema komeho guyelele. Joh. 3 19b, nonena uuyuni osho u li. Jesus ota ti: uyelele weni nau yele. Oshoka oye a li uyelele wuuyuni nokwa hala tse tu kale uyelele wuuyuni.

Aantu aawinayi mbo yi igilila omilema ngaashi Jesus ta ti: inaa hala u geelwe uulunde wawo u pangulwe, oshoka Jesus okwe ya uuyuni u hupithwe. Onkee ta ti: Osho ngeyi uyelele weni nau yele montaneho yaantu, opo ya mone iilonga yeni iiwanawa. Oshinima shotango osho egwanitho lyompango yaKalunga okuvulika koohapu dhe; okwiigamena kuuwinayi. Ps. 1: 2 Kala u hole ompango yOmuwa noku yi dhiladhila omutenya nuusiku.

Iilonga iiwanawa otayi ulike evuliko kuKalunga. Holola iilonga yoye mokweenda okuwaanawa mengungumano. Otu na okweenda aakaanashipo mokati kaapagani, opo ya hambelele Kalunga omolu iilonga yetu iiwanawa. Iilonga oyi na okulongwa hamolwesimano lyetu yene, ihe Kalunga ta pewa esimano. Otuwa tulwa po tu adhimithe edhina lyaKalunga. Jesus ta ti: Ongame uyelele wuuyuni ongoka ta landula ndje ite ende momilema ihe ota kala e na uyelele womwenyo.

Oho adhimitha ngiini Jesus, iilonga iiwanawa oho yi longo ngiini montaneho yaantu? Oho longo shike? Ongoye tuu uyelele nenge omilema. Aantu otaa hambelele tuu Kalunga omolwiilonga yoye? Tate Kalunga na hambelelwe sho tu na Jesus uyelele wuuyuni.

Ev. S. M. Shiininge

OUFITA WOSHIWANA

Oufita oo oshilonga shinene noshi shi okupandulwa. Ootate nootatekulu ova yandja oumuna wavo kovafita ovalineekelwa, ovo ve shii okulifa oimuna poulifilo muwa, noku i twala pounwino womeva mayela. Novafita va tya ngaha ohava pandulwa alushe komudo.

Vahapu hatu udu nohatu mono eshi tava ifana ovanahambo vavo, opo va tale ou a lifa nawa ye a pe-we olupandu loufita waye. Ombwanyu iho i mono komaluvanda?

Fye atusheni ava twa shashelwa medina laKalunga katatumwe otwa pewa oufita tu life oshiwana shaKalunga, poulifilo muwa noku shi yukifa pounwino womeva mayela. Ndee oshiwana otwe shi efela ashike ovafitaongalo, ovaevangeliste, ovalongifikola novakulunhuongalo. Luhapu twa dimbwa elombwelo eli Jesus e li popya moshipango shaye shaxuuninwa eshi ta ti:

“Indeni hano ka ningeni ovanhu aveshe ovahongwa vange.....”

Okeshe tu omukriste, omulumenhu ile omukainhu, okwa teelwa a tandavelife evangeli nounyuni aushe nokulifa oshiwana shaKalunga. Apa natu panduleni hano tate Kalunga eshi e tu xumbata fiyo omomudo ou mupe nande fye vene inatu mu longela opo e tu hokwe po ngeni. Odula ei natu i hoveloni hano nonghatu imwe twe liyandja kuye ye e tu pe eenghono dipe nomafiku e na elao.

Meshah S. Hitombo

Tu dimbulukweni eflyo

IOmwene wetu

Mateus Hamukonda, Mariental. --- ota kundu ovaeshi aveshe voshifo shOmuwetu ta ti ngaha: “Paife otu li modula ipe, nefyo laKristus oli li popepi, onghe natu indileni opo tu fikeni moshivilo shefyo laye tu nombili.

OU NA SHA TUU OKUHAMBELELA KRISTUS?

Kalunga ohe yOmuwa gwetu Jesus Kristus na simanekwe, ongoka e tu laleke nuuyamba auhe wokomwenyo mumbyoka yomegulu omuKristus Ef.1:3.

Haantu oyendji taa vulu okuzimina oshili yoohapu ndhika, oshoka haayehe yu uvite ongunga yokuhambelela Kalunga molwashoka kaye shi nokaye lwete natango shoka ye shi ningilwa kuKalunga.

Otse otwa lalekwa nuuyamba auhe. Katu na omata gowala, nenge oondjagumuke adhike dhuuyamba, ihe tu u na auhe, wa gwana po. Katu shi oohepele ngashi hatu shi dhiladhila olwindji, aawe, otu na uuyamba auhe. Uuyamba mbuka owa za muKristus notau yelutha pombanda oomwenyo dhetu dhi kwatathane niikwanegulu muKristus. Kashi vule oondunge dhetu shono? Ano otwa gwana okuhambelela Kalunga esiku kehe.

J. J. Shikongo

Ino pumbwa ongilishi?

Eyakulo lyostola ya Namagongwa ndyoka li li pondjila yokuya koshipangelo shaNandjokwe, okuza mondjila one ne ndjoka ya ya kUushimba, oto aadha mo ngashingeyi omagadhi gongilishi “SHELL RETINAX GREASE, omawanawa. Ngele wa hala gokatamba nenge goshinima shoye kehe tashi pula ongilishi.

Endelela ano u ye peyakulo lya Namagongwa nokwimonena po ondooha yoye. Oto vulu okuyakulwa ethimbo kehe, uusiku nomutenya.

Omuwiliki gwayo
Thomas Philippus.

ESHIIVIFO

MEnongelo lovayakuliongalo otamu ka ningwa oyoongalele ixupi ei:

9-11.2. Ovawiliki vounonaongalo moshitayingerki shaUkwanyama.
12-15.2. Ovawiliki vovanyasha mOukwanyama.
17-20.3. Ovanangeshefa

3-27.8. Ovaevangeliste vomoshitai shaNdonga.
15-18.9. Ovanamikunda vomoshitaingerki shOuninginino.

Patokolo lewilikongudu IEnongelo leti-29.11.1969, §5, ofuto omolwoikulya oi li 15c mefiku.

“Eendjovo doye odo ouyelele mondjila yange.”

J. Mufeti.
Omukulunhu wEnongelo

YINA YUUKONGINDJILA MOVENDUKA

Omatanga gaakongindji otaga yungwa ngashingeyi muSuidwes sho kwa kundanwa kutya Lady Olive Baden-Powell ote ke ya mOvenduka petameko lyomumvo, opo ge mu tsakaneke nawa.

Lady Baden-Powell oye omusele-kadhi gwanakusa Baden-Powell, Omwiingilisa, nomudhiki gwehangano lyuukongindjila muuyuni a uhe. Ye mwene ote ya a talele po ando Suid-Afrika uule woomwedhi mbali, ihe okwa hala wo okuthika moshilongo shOkakambe pokati ke-ti-11 na 13 gaMaalitsa 1970.

Eti-12 aakongindjila ayehe aalumentu naankiintu pamwe naawiliki yawo oya hiwa ya gongale mOvenduka, opo ya popithwe kuyina. Ngiika ehiyo ndika itali ka thiga omukongindjila gwomuSuidwes e li omutumba inaa kuluka ko e ki italele ko ye mwene, ye e kiipulakenene ko kundhoka yina taka hapula.

Ehangano ndika enene nolya simana muuyuni auhe, momadhiladhilo gaBaden-Powell olyi ile mo 1910, ye manga kwa li muSuid-Afrika. Mokushuna kwe kuEngland, Baden okwa ka yelekela pamadhiladhilo ngoka mokugongela aamatyona, opo ya gamenwe kombepo yuupwidhi.

Mongerki yetu ehangano ndika olya yelekelwa lwotango mokati kaamati komuhongi Pauli Laukkanen. Nonando she ende nuudhigu petameko, Kalunga mwene okwa longo oshilonga she sigo kwa holoka okangundu kaambo ya gana egano lyopaukongindjila. Aamati oyendji ya kala mooskola dhaamati ngashi mOnguediva nomEngela

nenge mboka ya mono ompito yokukala moontanda dhaamati, oya mono ngaa omatameko guukongindjila nonando inaa yapulilwa oshilonga shoka.

Aakadhona inaa mona mbala omadheulo ngaka ngaashi aamati, ye ga tameke konyala 1958. Ihe okuza sho ye ga lolithwa oye ga taamba wo mbala, noya ningi aatango yokugandja euvaneko lyawo paukongindjila, mewiliko lyameme Raija Salmi. Otu na ngashingeyi

mongerki yetu aakongindjila aamati naakadhona kumwe ye thike lwo-po 70 noye li iilyo mongongahangano yaakongindjila yomuuyuni auhe.

MukadhaBaden-Powell oku na ngashingeyi oomvula 81, nota thindikilwa molweendo lwe koshitenya she pamwe nomukulukadhi gwasho omusamane Gervais Clay omukuluntu omunene gwetanga lyaakongindjila aakiintu naalumentu muSuid-Afrika.



Etanga alihe lyaakongindjila aalumentu naakiintu otali monika mefano muka. Omathimbo nomathimbo ohaa gongala ngeyi pamwe nokutsaathana omukumo moshilonga shawo shi na ondilo.

Omandhindhiliko giilyo yehangano ndika otaga monika momizalo dhawo dha faathana momagala ga faathana, moombandi dhawo dha faathana nomalapi gawo gomoothingo. Ihe aakongindjila oyo kaye shi nando aakwiita, nenge ongundu yontumba yopapolitika aawe. Oyo ye li po ya kwathe muudhigu kehe tau holoka po.



Mpaka otapa thikama aawiliki yamwe yaakongindjila. Omuwiliki ota pulwa oshindji mewiliko lye.

Euvitho Iyevangeli moongalo

Aakuluntugongalo pamwe naasita-gongalo yomOmalinda (Maltahöhe) oya mbestela oongalo dhomauvitho melaka lyOshiwambo nOshinama, opo Aawambo unene mboka ihaa mono ompito okukala momalonge-lokalunga okuuva oohapu dhaKalunga mela kalyawo, ya uve. Aawambo oyendji oya hilwa koshinima shika noyi itula mo nehalo enene lyokupulakena. Aahona yawo ngele ya hala okuhikila ko aalongeli yawo nena oye na oku shi uvathana tango nelelogongalo naasita yomOmalinda.

Oonkundathana pafupi mondjila yaKrisimesa



Olwindji omumbisofi L.Auala okwa hokwa okukala pamwe naagundjuka moontanda dhawo. Mpaka ota ningile aakongindjila elongelokalunga.

Ongula yoshitumbetango cti-25 lyaDesemba oya adhika opo ya piti mo. Oongala odhindji kelundu nomomeya odha li tadhi adhima koonte dhetango lyongula sho tadhi dhenge kudho. Nombepo oya li ombwanawa, oshoka omvula oya adhika wo opo ya sheka manga aantu ye li pokupita mo mOngerki.

Oyendji ya halakana nale noku-li nokwihila komagumbo nkoka yi ithanwa ko, nenge ya tengeneke kutya, pamwe oku na sha okuliwa Okrisimesa. Aina naJulia oyo ayeke mondjila yokushuna kegumbo.

“Tala ko Aina, onda kala megalikano enene okuza kOkrisimesa yomumvogu opo ando ndi thike mo mundjika. Ngashingeyi ote tala naanaa kutya, Kalunga okwa uvu egalikano lyandje, osho Julia gwoomvula 12 adhika a hokololele Aina ngoka kwa li e mu vule muukuluntu oomvula mbali, manga ya li mondjila yawo.”

Aina naJulia oya za momukunda gumwe ihe omagumbo gawo kage li pamwe. “Oshike unene sha li she ku halitha okuthika mo mOkrisimesa ndjika?” Aina ta pula noka-pule konawa.

“O, Aina, nani ngoye iho kala wa nyanyukwa ngele u li moshitu-thi shaKrisimesa? Unene ookuulo, odho tuu hadhi nyanyudha ndje ndhoka hadhi uvika mokati kuu-

yelele wookinteli noolamba.”

“Eeno shili, Julia, sho wa popi ookuulo dhomOngerki, owa dhi-mbulukitha ndje owala kuku, yina yameme sho a li a hokololele ndje omasiku ngaka nkene ye a kala ngashingeyi ookrisimesa ndatu e li ashike megumbo, omoluunkundi wokolutu. Ihe oshinima a yuulu-kwa pakupopya kwe osho tuu shono; oondjimbo.

“Onawa nge tatu piti puye, Julia opo tuu tu mu imbile ko okaimbilo nando kamwe akeke, nenge egumbo oli li ngaa kokule?”

“Aawe, opopepi; Pomiti ndhoka to tala owala mooha dhetu. Nokuli osho omusita okwa popitha egongalo hugunina lyaa endaende owala, ihe li hokolole okuvalwa kwOmukulili momagumbo gaavu no-gaakulupe.”

Okuza mpaka oya li ya hwama moombepo dhawo noinaa pitilila po we nando egumbo limwe ya tseyo omu na ngoka itaa vulu okuthika kOngerki.

KAKU NA NDASILE, OKU NA NDAALELE



Omagongalo ogendji oga hwama monkatu yokulongekidha uukongindjila. Egongalo lyaKongo oye shi fulula ko okumona ongundu yotango ndjoka ya gandja euvaneko lyayo. Otaa monika mpaka ya thikama ya fa aakwiita ya tegelela olugodhi. Otaa ka ninga oshiholelwa shoyendji mboka yi ipyakidhila natango nokulongekidha. Kolumohelala omuwiliki gwawo R.Shekunyenge naRev. Paulus Andreas.

Uukongindjila otau lalakanene okukokitha ehologo ewanawa komumati nenge komukadhona moombepo dhawo. Okuhumitha komeho ekoko lyomalutu gawo. Otau ya longo okusimanekathana nokuuvathana nokwiinekelathana nenge okwiinekela yo yene. Muukongindjila otaa iidheula okulonga iilonga yikaha mokukwatha yalwe nenge okwiikwatha yoyene. Otau ya longo wo evuliko lyokudhiginina oompango tadhi ya pulwa.

Otandi hambelele Kalunga kandje, oshoka a kala pamwe nangame moshipangelo shaShakati moka nda kala mo oomwedhi omugoyi. Onda li nde ehama shili omagulu ihe esilohenda lyaKalunga olyo enene.

Ethimbo nda kala mombete onda mono aayenda oyendji ye ya okutalela ndje po noya kutha Oombimbeli dhawo noya leshele ndje, nokutsa ndje omukumo okulandula Omukulili gwandje. Kehe esiku Osoondaha, aapangi oya kutha ombete yandje nokuthindikila ndje komambo, okuka pulakena oohapu dhaKalunga.

Itandi dhimbwa wo ekwatho lyoondohotola naapangi mboka ya yakula ndje komikalo odhindji nokusila ndje oshimpwiyu ongula nongulohi. Otandi mu pandula wo one amuhe mwa li mwi itula moshimpwiyu shokugalikanena ndje. Kalunga okwa kwatha ndje shili, nongashingeyi ondi li nawa. Otandi mu halele eyambeko lyaKalunga one amuhe miilonga yeni ayihe.

Omumwanyoko meitaalo,

D. Nekulu T. Shipandeni

Natango oku na oonzi dhilwe kaadhi li moshigunda shika

"Aakwetu aaholike, tu matukeni onkugo tayi kugu muuninginino wetango, yepeya lyuupagani. Kutha oshiyemele shoye shomeya u ka dhimithenasho," ongomumoni gwasho, omupangi Ester osho a indile kaaleshi ayehe.

Meme Ester Shimpulu oha longo moshipangelo shaTshandi nokwa monene ompito yokutalela po omapya gomuninginino, ano omapya getumo. Mokugaluka kwe ka li e shi oku shi hokolola e li omutumba. Ota ti ngeyi:

Yayee, aamwameme sho ye li shili kofi yomilema omidhigu. Oye ndji oya gongalele ndje nonkumwe onene, noku pula ndje: "Oshike olutu lwoye komagulu inaaku fa oshipala nomaako? Nokuli iinima mbyoka yi li koompadhi oto yi lyatitha ngiini?"

Ano mpaka otaa dhiladhila nga iisitolofe yi li komagulu noongaku koompadhi.

Aamwanyoko mbaka ngele ya li, shila omahini ya nu, omahini goongombe. Oyo otaa lala mumwe niinima kape na eyooloko lyasha. Nongele taa kwatwa kuuvu otaa si ya fa oshinamwenyo showala.

Olweendo nduno olwa kuthile omasiku gatatu nolwa endele kaa-tumwapangi yaali nomusamane Tate Toivo Pentikainen. Shaa mpoka twa yi po otwa ningi ekwatho lyotango," osho meme Ester a ti.

"Otwa li tatu siluka momilamba nomoondundu kofi yomamanya omakumithi. Edhina Jesus nekwatho

Teteinge Shituua

Omushamane Simson Shituua oye Omukwanyamenena. Ye mwene okwa fa a dalelwa momukunda Owangwe waMunda, osheshi oumati waye wa kala unene mOwangwe. Okwa tengenekwa a fa a dalwa 1838, ye a hambola, manga a li omupaani 1897, omudo ou woshifya sheengobe (oshipokole) pahokololo laye mwene.

Simson manga inaa shashwa edina laye loupaani oTeteinge yaShituua. Okwa li omhote inene mukukalamwenyo kwaye, ndelene Kalunga eshi a hala e mu longife moilonga yepya laye, Teteinge manga a li moilonga youkolokoshi waye, ngenge e u ya meumbo lonhingo, onhingo ote i handukifa, ovanhu tave lidenge, nde tava dipaafana.

Efiku limwe Teteinge ova shakena naHaimbodi yaShanduama, ndele tava kundafana naye. Haimbodi ta indile Teteinge outa waye wondjebo. Eshi e u mu pa nde te u penauka, Haimbodi okwa kwata mofipa nde tuu waka! Teteinge a yashwa mongolo yokuulu. Okwa humbatelwa koshihakulilo pongulu

yoMuhongi pOndjiva. Manga Teteinge ta hakulwa moshihakulilo, okwa li ta hongwa eendjovo daKalunga. Teteinge a shashwa edina lipe Simson.

Moukriste waye okwa kala omukriste omudiinini weendjovo daKalunga. Opo a pewa oshilonga shoutaleli weongalo. Ye ta hambola omwalikadi waye wotete moukriste, ou nda dimbwa edina laye. (pamwe oKatrina kaShikongo omuwaina waLoide Shikongo).

Simson mouidiinini waye ovaitaveli vakwao ove mu pa edina eli: Simson womhote." Efiku limwe okwa ya komuhongi ta ti: "Omuhongi, ovanhu otava tula nge unene eendjovo domalundilo dihapu." Omuhongi okwe mu lombwela ta ti:

"Tala Simson, ino tila eendjovo dovanhu. Momatwi oye tula mo oidimbadiimba opo eendjovo dovanhu di xulile komatwi okomutwe, di haye komwenyo. Longa oshilonga shoye eshi wa pewa kOmwene woye."

Omushamane Shituua okwa yakula unene ovahongi vOvandowishi mefimbo linya oita oyo ya teya po Oukwanyama fimbo inaa yuuya, manga vali mOukwanyama. Pefimbo olo ovapaani ove mu tanga ngaha: "Simson Shituua a teka molomakaya, ye momambo ta twama, a kaudifile ovanhu evangeli." Taku twikilwa ..



lyokolutu olyo tali tu enditha ngeyi."

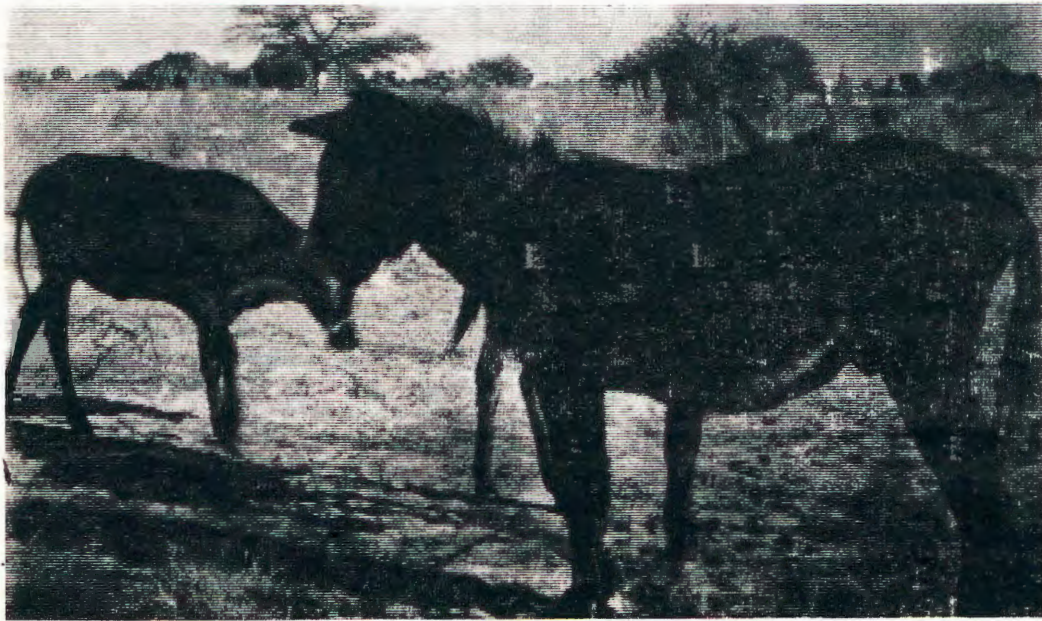
"Omupagani gumwe okwe tu lombwele ngeyi kutya, ngashingeyi onda hala okuya moskola, ihe oshinima shandje shika shokomutse otandi shi ningi ngiini? Epulo ndika enene tali pulwa kungoka a pumbwa ehupitho.

Tala epya lyaKalunga lya lokekeka, li na iilya oyindji, ihe aalngimepya kaye mo."

Okangundu kamwe kehangano lyaailongi aakriste otaka konakona Ombimbeli nokukundathana shoka tayi ti kuyo. Omuwa oohapu dhoye odho uyelelemondjila yandje.



Jesus a hala e ku longithe opo naa mbaka ye ye wo moshigunda.



linamwenyo mbika oyi na eyooloko enene muukwatya wayo nokape na ngoka te shi ludhike. Ihe ongombe oya li po tayi latha ndoongi ongaashi omuntu e li na kuume ke. Aakriste oyendji ohaa itula moongundu kaadhi shi dhawo; noku-holeka olupe lwawo lwopakriste. Konga ano ongundu yoye manga kuyele.

KOMWEDHI INAKU ZA OMAFANO TAGA NYANYUDHA

Olweendo lwokuya komwedhi olutiyali okwa li talu nyanyudha unene, oshoka ayihe oya li tayi ende ngashi ya li ya fanekwa, ihe shimwe ashike she eta oluhodhi osho omafano ngoka ga thanekwa, opo ando ga uike oshipala shomwedhi nkene sha tya itaga yele nawa.

Ongundu yaanongononi oya ti kutya, etata lyomafano ngoka ga zi komwedhi inaga yela nando, nosho tuu omakwawo ogendji kage na nando oshilonga nofilima yimwe oya thigala aniwa komwedhi. Omuwambo oha ti. "Pokuma ngele owi idhimbwa po ono ka galukila po ishewe".

Rusland ota ti: ye komwedhi ota vulu okuya ko esiku kehe a hala, (ano okutuma ko omuntu) ihe sho inee shi ninga omolwashoka ye elalakano lye oli ili. Ye ota lalakanene okutunga eha lyomayakulilo (stasie) mombepo molweendo lwokomwedhi nenge lwokoonyothi

OHI YA FA ONGOLO

Oludhi lwohi inaayi monika nale mekwato lyoohi dhomefuta lya-Suidwes olwa monika lwotango pehulilo lyomumvogu. Ohi ndjoka omalwenya gayo omale nohayi vulu okuthikama kugo. Yo yene oyi na uule woondeimi 18, onduudhe nomakonda omatokele. Onkene ya lukwa **ohingolo** (sebravis) Ohi ndjika otayi kala ya dhigininwa sigo ya falwa mekonakono lyongundu yaanongononi, opo ye yi fatule uukwatya wayo noludhi lwayo.

Otwa teeleleni shike?

Vakwetu efimbo ola pya la tilyana nongula oi li pokusha. Ndele fye natango otu li meemhofi dewililila. Omukwetu tu tonge nena eshi shi tu kwete, eshi tashi tu mange naave oshike?

Eendjovo ode tu lombwela da mana. Ohatu liningi oshiyele. Oita idjuu ihai luwa to mwena po. Hano inatu hekwa kounyuni. Tu fikameni tu kondjele Ohamba yeehamba. Opo ehe tu hange tu na oluvala lihefi laye, ye (Jesus) aha ka tye "Oshili ame nghi mu shii noshito naale." Openi hatu ka yuka? Efimbo loke du ola pwako. Oixuna nokuli, evemo ledu inali tu heka. Tu lipuleni fye vene ehologo letu otali ka kala mbela ngahelipi. Ouwa ile oixuna? Ehandu ile ehafo; omupya ile elao? **Nondakofa T. Tujeni**

KALI NA OMUFINDO

Eti-22.11.69 okamati kedina Haimbodi Shishiveni kwa li haka longo mOmaruru ka fya ombadilila.

Ova pita ngaho ongula tava longo moshikunino shomuhona wavo. Okwa li tava tete olusiana vo ova li ngo ve lili kokule. Vati pefimbo ngoo olo longula puvo pwa enda oshidila tashi tuka, umwe okwe shi umba nembele laye olo a li ta kashulifa. Embele la yukilila fiyo la teta omunino waHaimbodi Shishiveni.

Omumati ou Haimbodi Shishiveni okwa dile kOnembaba, Okalongo. Katu shi ovili nefimbo Omwene wetu ta fiki kufye. Kala hano oupafi. **A.Naulondo**

OONDJOKANA DHOPOKATI KOMALUDHI GAANTU, EPULO ENENE

Kape na nando ehala limwe mOmbimbeli tali yoolola omuntu komuntu omukwao omolweshito lye andola nenge omolwokwaafathana kwe nooyakwawo kopanshitwe, osho sha li ehokololo lyokangundu kokukonakona oondjokana dhopakati komaludhi ga yooloka.

Ehokololo olya tsikile tali ti kutya, aantu ayehe oya shitwa oshifetha sha-Kalunga, ye thike pamwe koshipala she, onke noondjokana dhopakati komaludhi nomaludhi kadha li dha indikwa nando. Okangundu oka gwedha ko ishewe kutya, kakele shila koondjokana dhomwiitaali nomukeeneitaalo, odho adhike inaadhi ziminwa kOmbimbeli.

Oshipopiwa shoondjokana osha li moonkundathana dhoshigongingerki shOombulu. Omadhiladhilo gokangundulongekidho nkoka ka eta uuyelee mbuka, oshigongingerki osha nyengwa oku ga taamba noku ga koleka, manga inaaga konakonwa natango koshigongingerki tashi ka landula.

IIKONDJITHO IIDHIGU OTAYI FUPIPIKWA

Iilongo 93 oya shaina ombapila yeuvathano sho ya ziminathana kutya, itayi ka kala we aaindjipaleki yikondjitho yoonkondo (kern wapen). Shimwe shomuilongo mbika Ondowishiland lyokuuninginino. Rusland, Engeland naAmerika oyo ya talwa aatonateli yeuvathano ndika ngele tali yonwa nenge itali tsakanithwa ngaashi sha tokolwa. Oshinima shika osha kala moonkundathana uule woomvula ndatu. Ishewe muHelsinki, muSoomi, omwa kala oonkundathana dhaAmerika naRusland pehulilo lyomumvo gwaziko nkene taa vulu andola okuhulitha elongekidho lyikondjitho yuuzigo mbyoka tayi etele oshinima kehe shi na omwenyo kombanda yevi eso. Natango ehulilo lyoonkundathana ndhika olya li inaali adhika manga.

ETUMO LYOONKUNDANA MUAFRICA

Iigwana 79 yomiigwana yahangana muAmerika oya zimine muAfrika mu tungwe etumo lyoonkundana enene kaaludhe yomuSuid-Afrika muMosambieke nomuAngola. Eindilo ndika otali tuminwa amushanga omunene gwiigwana yahangana, omusamane U Thant. Iigwana 20 inayi ya mo metokolo na Suid-Afrika nomoonkundathana dhodhene ina kuutumba mo.

Ngele nani efaneko ndika olya kuthwa mo nawa niilonga yalyo e tayi tameke, nena okwa tengekwa kutya, otashi ka pula shi thike poodollar 131,000 komumvo.



Rev. Oskar Shamwe.

Dha za kep.2.

OOSHEENDO SHETALELO PO MUBOTSWANA

rikirira. Kombanda yokangerki aka omwiidi oo wa kumbifwa otau monika nawa, nde ekuma ola mbonyauka nai. Koshi yomiti ovanhu okwa li va ninga oungudu, fimbo okwa li twa teelega ongerki i shite.

Omuwiliki wondjila omwevangeliste Omuwambo, Gabriel David, okwa li ta konakona omunyasha Omuhherero opo a pewe eshasho liyapuki. Osho ngaha omapulo nomanyamukulo kwa li taa i ombinga nombinga melongo loukriste, mOmbibeli nomokatekisa.

Efimbo eli ovahongi ovatumwa ova li omutumba koupundi pamwe novalongiyakuli ovo ve litula mokuyakula oshiwana shavo ngashi Zageus Kandjii, Josef Tjetjoo.

Ovatumwa Preses H-K. Diehl, Pastor Elifas Eiseb na Pastor G. Reeh oshipopiwa shavo osha li sha kwatelela mo osho ve shi kundafanene nomuhona wOvaherero wedina Zedekias Kaekurama Kahaka. Enenediladilo olo nghee pe na okuningwa, opo oilonga yaJesus Kristus i hovelwe mokati kOvaherero movapaani venya.

Manga kwa li tava kundafana ngaha ovakainhu Ovashamane pamwe nounona vavo ova li omutumba koshi yomodile. Pastor Oskar Shamwe okwa li e lipyakidila moku va yakula kombinga ya kaifudilwa (oikulya). Ye omuwangeliste Omudamala wedina Ananias !Gao!gaseb, voo na felani Ursula Pöninghaus otava yakula ovo ihava nangala po nawa, moku va pa epele.

Fimbo va li moilonga posihau-to ope uya omulumenhu umwe oo kwa li e na odjuulufi mokumona

Omukulili. Efano laye le tu ulikila nhumbi Botswana a djuulukwa Omuxupifi.

Ongerki ya shita mo, nomuhongi Eiseb a ninga elongelokalunga neshasho nOuvalelo Uyapuki, fimbo omuhongi Shamwe ta yakula meudifo. Ovamwameme vamwe va yandja ashike omakundo. Omwa li yo omulumenhu a tapakana elapi limbilau nondjafa itoka. Olye mbela? Vati oye omuprofeti omunene Mukale, oo ta fimanekwa ndee ta tilika unene. Ove li ko vahapu va tya ngaha nove li mehanganano tali ufanwa "Apostolic Spiritual Healing Church" omo ovaprofeti tava nwefa ovanhu omeva mapyu e yadi omongwa. Nokuvendela ovanhu asyn.

Omulumenhu oo okwa tumbula ta ti: "Ovanhu aveshe ove na Kalunga kamwe. Omalinyengo aye a holola ouprofeti waye. Ovakriste venya va pula noluhodi va tumi-nwe yo tuu ngeno umwe womovahongi novaevangeliste.

Ova nyamukulwa nenyamukulo le va hafifa. Vahapu ova landa omambo navamwe ova pewa yo oshali.

"Ileni vali, aalukeni vali," osho va li po tava ingida nokuyelula omake avo eshi kwa li tave tu lekele. Eengerki adishe tadi teelwa mepulo eli moshilongatumo muBotswana.

E. L. K. na Elok to pulwa u ilikanene ove u linyengife olutu loye mokuyakula metumo.

Kaume weni
Oskar Shamwe



M.T. Ndakalako

Omwevangeliste Ndakalako wongerki yaAnglikani ou ha yakula oilyo yongerki yavo muTsumeb, ota hafele unene elongelokumwe leengerki. Pamwe natate Malakia Hauuanga va longa oshilonga shinene mokati kovanyasha voshiwana shetu muTsumeb.

Ondjalulamasiku ya holoka ishewe!

Eshiiwifo

Okursus onhivali mOshitaingerki shaUkwanyama: ovafitaongalo, ovaimbifi, novahoololwa amushe momaongalo ohatu mu shiivifa kutya, okursus yomaongalo aa **Ohalushu, Ongwe-diva, Endola Olupandu, Okalongo, Onhelewa, Ongenga**, otai ka kala mEngela okudja **20.2. fiyo 25. 3. 1970**. Eembilive deshiivifo oda tumwa nale komaaongalo eni, onghe: "Ileni tu nyakukilweni Omwene, tu imbileni emanya lexupifo letu."

Ovayakuli ovakweni
A. Hirvonen Toivo Ndevaetela

KAALESHI YOMUKWETU

Oshinyanyangidho, Oniipa. Omunya-nyangidhi Julius Katau ota kunditha aaholike ayehe mboka haa lesa oshifo shOmukwetu ta ti:

"Nonando mwa adhika mwa kundanihwa nale moshifo shOmukwetu, ongele nomalondodho nenge nomapukululo gasha, pitikili ndje natango ndi mu zizilike nokugwedhela ko omakundo gandje pamwe nomahaleloyambeko.

Kahola oku li pokupya, ihe omunelago oongoka ta kala ini idhimbwa kutya oye olye, naampoka e li po. Natango otatu ku hiya neinekelo otse mbaka aanyanyangidhi yakuumeni (Omukwetu) u tu tumine natango owino woye, opo u ka tungeshigwana shaKalunga. Otwa yuulukwa natango elongelokumwe nangoye, ngaashi sha zi nale omimvo adhihe dha piti.

Natu hambelele ano pamwe shotwa ningwa ngeyi aatungi yoshigwana pamagano tatu ga pewa kOmbepo. Kalunga ne mu endithe momumvo omwaanawa gwelago.

OMUKWETU

Oshifo shOngerki onkwaevangeli paLuther yomOwambokavango
Die Tydskrif van die Evangeliese Lutherse Ombokavangokerk
Oha zi mOniipa.

Omukuluntu gwoshifo/Hoofredakteur Omubisofi Dr. Leonard Auala,
Amushanga/redakteur S.Ekandjo
Ondando komumvo mOwambo 70c kUushimba nOkavango 90c
Kombanda yomafuta R1.30.

Oondando nomambestelo naga tumwe kOmukwetu,
Oniipa, P/B. 2015 Ondangwa, S.W.A.

Oshinyolwa shuule

wondeimi	1	otashi futilwa	R1.00
oondeimi	2	"-"	R1.90
oondeimi	3	"-"	R2.70
oondeimi	4	"-"	R3.40
oondeimi	5	"-"	R5.00

Oto vulu okutuma efano lyaashoka wa hala shi tseyithwe nomatumbulo wo gasha ngele ope na.

The Finnish Mission Press Oniipa
P/B 2015 Ondangwa S. W. A.