

OMUKWETU





Egululiliindje iiyelo ndi ye mo

Amerika oku uvite uuntsa mokuya lwotango komwedhi. Suid-Afrika ota yolele ketayego okuya mo muunongo tau nyenge oyendji sho ta tsike omitima maantu, notaa ka teya oomboloto dhawo kaaye na mbudhi.

Yamwe ya hala okweegululilwa iiyelo miilongo inaaya enda mo nalekene ya valwa. Itatu mana okufatulula okukalamwenyo kwesiku kehe, oshoka omathigathanopo ogi igalala momemo getu. Kehe gumwe ano a yuulukwa okuya mpoka inaa kala po shito. Omuwa gwoye ota ti ngiini?

"Egululiliindje iiyelo ndi ye mo." Kelwete ompito momwenyo gwoye. Ke lwete ompito moshigwana shoye. Ke na eha muushiinda woye. Okwa hala okuya mo meni noti indile nesilohenda, "Egululila ndje."

Naampaka ope na uuyuni uupe Jesus a hala a fale ndje mo muwo, sho tandi tala Jesus a thikama moshipala shandje nota pe ndje iipatululo yomweelo. Newi lyohenda ta lombwele ndje, "Egululila ndje osheelo shomupagani ngoka. Egululila ndje omweelo ndi mone ompito yokuya mo moshigwana shiyaka."

Ehiyo ekumithi shili, ihe oli inekelwa omunyengwi gowala. Jesus ta ti: "Ongoka te egululile ndje okuye tandi ya notatu li uulalelo pamwe naye." Ehol. 3:20.

Uulalelo waJesus otau ka vulikitha ndje ndi vule okuninga sha. Owo oonkondo, owo egameno, owo omukumo ihaagu teka, owo esilohenda lyaKalunga mungame.

Taamba ano iipatululo yevangeli miikaha yaJesus u mu egululile iiyelo a wape okuya mo.

Eenghundana da dja moshongalelengerki Epangelongerki lipe

Oilyo ipe yEpangelongerki oya hoololwa koshoongalelengerki ponhele yaayo ikulu, opo i ka longe efimbo keshe nokukundafana oinima yongerki ponhele yoshoongalelengerki. Ehooolo eli oli li ngaha paitaingerki:

Moukwanyama, Rev. Vilho Kaulingenomuponhele waye Rev. Josia Mufeti. Ondonga, Rev. Stefanus Mvula nomuponhele waye Rev. Herman Shongolo. Mouninginino, Rev. Mika Iilonga nomuponhele waye Rev. Jason Amakutuwa. NomOkavango. Rev. Elia Neromba nomuponhele waye Rev. Natanael Sirongo.

Ovatumwa Rev. Toivo Pentikainen medina lovatumwa aveshe tava longo mOwambo, nomuponhele waye Rev. Matti Seppälä. Omukulunhutumwa mOwambo Rev. Mikko Ihamäki, nomukulunhutumwa kOkavango Rev. Pentti Toivanen.

Ovo ava aveshe va pewa oshisho shokutonatela oilonga yongerki efiku keshe. Omwene ne va punike moilonga yavo efiku keshe.



Omuponhelewiliki wEpangelongerki nowOngerki aische omufitaongalo Stefanus Mvula

Omuponhelewiliki wEpangelongerki

Epangelongerki ola hoolola Rev. Stefanus Mvula a kale omuponhelewiliki wEpangelongerki pefimbo olo omubishofi ota hangika komaimbo.

Omushamane Mvula oye yo omuponhelewiliki wongerki aische. Ohatu halele tate Stefanus, Kalunga e mu hapupalifile eenghono neendunge dokulonga mongerki yaye pefimbo eli lidjuu.

OMUMBISOFI AUALA MOSHIPANGELO KOVENDUKA

Ngashi sha tseyithwa nale moshifo sha pita kutya, omumbisofi Dr. L. Auala okwa mona oshiponga noku li moshipangelo kOnandjokwe, konima sho pwa dhimbululwa oshiponga oshinene, okwa falwa tango kOshakati. Ihe naankwiyaka wo aandohotola oye mu tumu kOvenduka neulumo.

Pakuuya omatumwalaka ngoka haga zi kOvenduka ethimbo nethimbo aniwa oku li po ngaa hwepo ngashingeyi. Natu mu dhimbulukweni momagalkaneno notu shi shi Kalunga ota kala pamwe nomumati gwe.



lilyo iikulu yEpangelongerki mbyoka ya piti otayi lalekwa komumbisofi Leonard Auala. Yimwe yomuyo oyo natango aapeha yiilyo iipe mEpangelongerki



lilyo yEpangelongerki Epe lya hogololwa moshigongi-ngerki mOkahao mujuli numvo, otayi thikama mpaka nokutaamba omahaleloyambeko komumbisofi Auala

OMUKULUNHU IHA LILI EPWANGA

Ta, shamha ngaa u lwete omukulunhu ta pitifa omahodi, ope na sha. Jesus okwa lilile oshilongo Jerusalelem osho inashi koneka efimbo lasho londilo. Luk.19:41-47.

Jesus okwa li a hala okupa oshilongo shinya ombili, nde oshilongo osha nyengwa okukoneka kutya, efimbo eli olo efimbo lange.

Onghee Jesus a lila. Jesus okwa lila koshinima sha kuma omwenyo waye, a yehamekwa koshilongo shinya. Omolwonghenda yaye nolukeno nohole ihapu, Jesus okwa lila. Oshilongo keshe, ile oshiwana, ile omwenyo ou na efimbo lao olo Kalunga e li eta muJesus Kristus, nde luhapu efimbo la tya ngaha ola pitilila po ashike. Jesus okwa shiiva nakupitililwa po kefimbo laKalunga kutya, otaka hangika koshiponga shinene, omunhu a tya ngaho otaka hangika kefimbo laau e he na onghenda. Ota ngumauna, nota halakanifa nota nyeke omunhu ashishe osho kwa li e shi na.

Jesus nge ta tale noshiwana she-tu ota hange mo ovo va dimbwa filufilu kutya, oku na efimbo laKalunga. Ovo Jesus omolwavo ota lili. Vahapu eemwenyo oda mona oshiponga. Ovanhu va ninga oingumaukila yongaho, ovanhu va fa omaputu, va kanifa ondjelo yolutu. Ngenge we mu pula kutya, oumati ile omushamane, ota nyengwa oku ku nyamukula, osheshi ovanaita naye ove mu nyeka ashishe.

Jesus okwa li a lili osheshi oshilongo shaye inashi koneka oinima vali,

a) efimbo lekongo lasho,

b) nefimbo loshiponga olo tali shi hange. Jesus ta lili kovanhua va efa eshikulafano lopakalunga va efa eendjovo daye odo tadi yandje ombili yokomwenyo. Ovanhu va tya ngaho ovelitula mokuhenakonashanikalunga. Oinima yopakalunga otave i tala nomesho amwe e lili.

Jesus ota tungu ongola note va taataa, osheshi ova hala okuninga ongulu yaye okwena kweembudi. Mokukolwa kolwiso otava landakanifa, shaashi ohava pulaulwa vati oimaliwa yomido neengalo dihapu odo tadi mane ovanhu vati oimaliwa. Vamwe tava twala oilandifwa yavo fiyo opoivelo yeengerki. Eefitola oda mbwalangandjifwa meeshondaha opo ovanamambo va lande. Itava fiki momalongelokalunga osheshi ova keelela omapakete eemboloto, tava landifa.

Vahapu tava nyengwa okupopya ngashi Omupisalmi oo ta ti: "Omwene ame ondi hole onhele yongulu yoye, nonhele opo tapa kala oshinge shoye."

Mwaaisho oyo twa ulika i shi okulilifa Jesus kape na ou a nyonaukila mo ngeno eheshi okukwafwa kuJesus. Ou ta alukile kuye aisho iwa oye mu longekidilwa. Owe uya tuu? *Elia Haipinga Lupandu*

Ileni mu vululukwe

Olyo Iya li enenedhiladhilo meuvitho lyomumbisofi e li uvitha mo-shigongi shaasita yomongerki yaElok shoka sha li sha gongalele mo-niipa omasiku ga ka pita.

Omumbisofi okwe ya popitha nomatumbulo gopambimbeli nokwa ti ngeyi.

Ongundu yaamati yaKalunga, ongoka e mu ithana oye omudhiginini, naashoka e mu ithanene ote keshi tsakanitha. Omumbisofi okwa tsikile natango, Jesus ota hiya nena ta ti:

"Ileni kebululuko, vululukweni manga, vululukweni mungame."

Yamwe oya kondjo ethimbo ele momagongalo, oya vuluthwa komaudhigu gi ili nogi ili notaa pumbwa ngashingeyi evululukuko.

Ethimbo olindji lyomukwiita olyo lyuupyu mokwiidhidhimika nomokudhiginina. Ihe okathimbo kebululukuko oko okafupi noke na ondilo.

Otwe ya pahiyu lyEpangelongerki ngashi hashi ningwa notwe shi igilila, ihe mumwe nehio ndika omwa holama ehiyo IyaJesus, ngoka ta ti, "Vululukweni manga."

Evululukuko ndika ekumithi oshoka omwenyo tagu vululukwa muJesus nando ondjoko oyi li natango komapepe. Paulus naSilas sho ya li ya vululukithwa, oya li ye na iipala yi na enyanyu, nando omalyenge opo ga li natango. Jesus ta ti: "Ondjoko yandje ombwanawa, nomutenge gwandje omupu" Mat. 11: 30.

Otwa pumbweni evululukuko ndika omolwomathimbo gekondjo ga giti po, ihe nomolwomathimbo wo ge li komeho tatu ke ga tsakaneka. "Ileni mu vululukwe manga." osho Jesus ta ti.

Ita nyenyeta omoluunkundi wetu ite tu yematele omolwokwaavula sha kwetu, oshoka okwa tseyo wo uudhigu womolutu. Naye wo okwa li a makelwa mwaayihe. Oti ithana ashike nombili, nohole nohenda "Ileni kebululukuko." Mat. 11: 28.

Onguti yaNoa oya kondjo noku kongka eha lyevululukuko. Oya tuka kokule nokukonga, ihe inayi mona ko eha. Oya taalele ihe kowato, mpeyaka tayi mono omaako gaNoa taga yeluka oku yi papatela, osho tayi endebele nokugwila ngeyi momake gebululukuko. Osho aamati yaKalunga taa yakulwa wo ngeyi mokuvulwa kwawo.

Ila Omwa Jesus, otwa pumbwa evululukuko!



Osho aasitagongalo naayenda yalwe yoshigongingerki ya li ya ende momukweyo ngaaka taa yi kongerki okutameka oshigongingerki moKahao

OSHIKUMITHA MOWAMBO

Aamwameme aaholike mu na omagumbo nomalugo: Onda kumwa unene moshinima shika. Otombo ya yonopo oshigwana shAawambo. Omunegumbo omukwetu, nomukulukadhi omukwetu naamuhe mboka hamu lesa oshifo shOmukwetu, sileni aakweni oshimpwiyu oku ya fala koshipala shanguka ihaa nyengwa kusha.

Omagumbo ogendji gAawambo taga teka po omolwokunwa kwotombo.

Shaa tuu to yi momagumbo ogendji to pumbwa ooyene yomagumbo, shila kelago ngele to adha mo uunona. Ogendji oto adha taga tuka omakola. Aantu oye li peni mbela?

Aantu oya ya kookamba, oko to adha ya kuutumba owala taa dhengathana omeho, taa tala ngo ta landa ehalasa. Kehe gumwe opolwe ta tala ngo ta ti, taamba u nwe mo. Kuume omusamane, na kuume omukulukadhi, na omumati nOmukadhona:

Oto yono po oshindji mokutegelela owala ngo ta landa e ku pe u nwe mo. Omasiku goshiwike ashihe to kuutumba pokamba wa tala aantu kiipala.

Pamwe nepeni olyo ootu ihoo ende nalyo, e to landa goye e to nu, e to shuna kegumbo u ka longe oshilonga shoye shontumba noshongandi.

Tala kuume, ngele ou na okapeni koye, landa e to nu e to yi kegumbo lyoye, u ka longe shoka tashi pumbiwa.

Pulakena nawa ndi ku pukulule oyo u ethe omutumba gwopokamba. Megumbo kamu na oondunda kamu na omipini dhomakuya nodhomatemo. Ihepeka nando ope na ondjila onde ku ka teta omihuya u tunge oondunda. Shaa tuu nena dha thikama peelo lyoye, aanaluhepo nadho otaa matuka nuupeni ye dhi kuthe po, osho tuu omupini gwekuya netemo.

Omukulukadhi kombinga yokelugo oku na shike? Pamwe kaku na oontungwa, noshuma shokuteka omeya. Ontungwa wa kuthile pontumba oya za ombando, oto yi hohola uunake yi ku hedhithe ko?

Omanga to wegele pokamba okutala owala ngo te ku pe u nwe mo, elugo tali ku nyenyetele shoka nekaka lyomboga kali po. Othinge omo yi li nomaandja nima moka. Aakiintu oonima, noongandi taa pushu nayo. Omukaga itagu lolopo pelugo lyependa. Oko nokuli aahethi taa matukile sho taa nyengwa komukaga.

Aantu ya pwidhulwa kotombo, aakriste kongerki kaa shi ko we, oto uvu sho taa mbololoka omaimbilo ya tya omahalasa pomake. Otombo ya ningi oshimenka shaakwashigwana. Uunona tau ekelwahi auke momagumbo, iipalutha ihau mono we ya gwana. Oluhepo olunene lwa holoka moshigwana.

Omukwetu tala! Owa kanitha etilokalunga omunamwenyo, owi itula ihe moonkondo dhotombo. Tala kuume, owa shitwa oshifetha shaKalunga e to shundula ukriste woye, negumbo lyoye omolwokunwa. Omutondi omo ta thitha omwenyo gwoye moshikalunga shoye shoka.

Ihula eti lyuupika wokunwa u ye kuJesus omukwathi gwoye kombanda yiinima ayihe.

Landula Jesus ayihe oto yi gwedhelwa ko. *Salomo Akooko*



M. Hauuanga a londa Mikael waye ta ka talela po meefaalama

OMWENYO WANGE IMBA TANGA KALUNGA

Omwenyo wange imba shili nokuhambelela Kalunga ove ino dimbwa omauwa aeshe aa e ku ningila. Osha li ongondjodi eshi nda pewa omhito ndi twikile muSt. VI.

Nda tambulilwa mOseminari mOkahao. Omwene okwa kala ekwafolange mwaaishe ya li nge komesho. Omido nhatu nda kala mofikola inandi mona nando omaudju asha okomwenyo ile okolutu, osheshi omwene okwa pange ovo va kwafa nge shili. Omwene yambeka ovayakuli vange, va pa onghenda natango yeyakulo. Omwene ne mu yambeke mwaaishe mwe i pumbwa.

Mokutala omaendifo Omwene, ohandi mu hambelelele efilonghenda laye linene kwaame. Omwenyo wange itau dimbuka oku mu imbila ehambelelo. Ohandi pandulile onghenda yaye eshi tayi kala pamwe naame. *L. Ngonga*

Kalunga ihe ku efa nganyoko

Eti-23. 4. 69, onda kandoma naMikaela Motorfiets. Onda li nda mono oshiponga unene mokuulu. Onda kala moshipangelo ohani imwe. Kalunga ihe ku efa nganyoko. Onda amenwa momakipa onhumba aike yo kombada yongolo ya tetwa nai komamanya, manga omutwe wa li wa enda emanya limwe pomunghulo.

Onda li hai ka ninga owandaha kOmina yaShimelta. Ehalo lOmwenene olo tuu olo ndi nangale manga moshipangelo, opo ndi kale meimweneneno koshipala shOmwene, nokulikonakona ame mwene. Onda li nda dimbulukifwa omatumakanifo ange manene meyakulo lange meongalo. Omwene a popifange e shi nda lesa omikanda edi mombete yange, Danile, Juda, Mateus, Jeremias, Markus, Amos, Moses wotete, Ehololo, Hesekiel, Nehemia, Omuudifi. Ekandomo eli ola li efilonghenda laKalunga mombete yange, osheshi mombete ka kwa li hai di mo. Omwenyo wange owa li u li popepi nokufya, shaashi ihai mono efimbo oku li palula neendjovo daKalunga. Kasha li eenghono domwenyo wange eshi handi udifile eongalo keembinga adishe. Nani omwenyo wange otau utama. Mombete yange nda palulwa keendjovo dOmwene wange, nonda hambelela Jesus Kristus.

Eongalo la holoka pombete yange, la u likila nge, Kalunga ohadenge ovo e va hokwa, na ote ke va longifa. Ola ilikanena omukulukadi meme nounona. Omumbisofi L. Auala a tumbula pombete yange ta ti: "Owa xupifwa u udi fe natango." Paife onda kufa Mikael (okapakapaka) hai ka talela po ovamwameme meefaalama.

Hai ti: waima, omaonda oko tuu mwaama oko? Olye hano te tu pula?

Ame wani. Ha totelwa kOvambadja, ve mu wete a tilyana, ove shi ekundu lapyo. Ove mu dimbuluka keexulo domatwi, nokeemhadi eshi ta ende. Ofyeni ovahongi, ngeno hatu dimine ondaka yOmwene eshi ta ti:

"Makula okanya koye ndi ka yadife" Shi dule okumakulila oshiwana okanya momaudifo, nomapukululo. Manga twa yaduluka. "Makula okanya koye ndi ka yadife."

Malakia Hauuanga

Omaudjuu ongerki pefimbo eli

“Ongerki inai diladila ashike oinima yomuyo, meni layo, ndelene i na okudiladila oinima yoiwana muSuidwes,” eli eindilo lahamushanga wmwamemengerki yomOushimba Rev. G. Reeh, a indila koilyo yongerki yaElok.

Hamushanga Reeh oo a kala moshongalele shOngerki yaElok mOka-hao medina lOngerki yOvadowishi mOushimba, okwa kunda oshoogalele ngaha:-

“Oiwana muSuidwes oi li po tai lihanifwa opo keshe shimwe shi kale ponhele yasho. Ndele eshi otashi ka eta omamakelo mahapu noshashi ka etela ongerki oupyakadi.”

“Onghe nee onghalo yefimbo lo-paife otai fininike eengerki adishe muSuidwes di longele kumwe.”

Omushamane Reeh oo kwa li a enda pamwe naRev. Jason Haufiku medina lOngerki yovadalelwamo vomOushimba, okwa xulifa ekundo laye nomatumbulo aa:

“Oshilonga shetu kashi fi oku ka kondjifa Nima e li penya ile okukondjifa epangelo olo twe li pe-wa, ndelene fye ngashi tu li po o-vakriste otwa hala tu longele Kalunga moukumwe twa manguka.”

Kalunga ne tu pe omhepo youkumwe meengerki detu, opo tu hepaululile oiwana yomedu letu oukumwe ou meitavelo.

OSHIPANGO SHOHOLE

Omu kwaniilwa nenge omwene gwegumbo kehe ngele ta yi kiilongo, mokuthikama kwe okwa li e na okulaleka aantu noku ya lombwela shoka ye na okuninga noku shi dhiginina nokugandja oondya pethimbo lyadho. Omuwa gwetu Jesus mokuya kuHe megulu okwa thigile aalongwa ye oshipango. “Ngashi nda kala ndi mu hole, osho nane wo mu holathane.”

Ohole ndjika yokuholathana oyo endhindhiliko lyoku mu dhimbulutha kutya, one aalongwa yandje ngele mu holathane.

Aalongwa yaJesus oolye? Otse nango ye aalongwa yaJesus okuza kesiku ndyoka twa taamba endhindhiliko lyomushigakano Mat.28:19-20. Jesus mwene okwa tumbula kutya, nando ta yi e ke tu longele eha ota galuka e tu ile, opo tu ka kale nkoka e li.

Kuume kandje otu shi owala okutala kutya, ohole yokuhola aamwataate mOngerki yetu, Jesus ngele ta galuka ote yi adha tuu mutse, nenge ote yi adha twe yi kuthwa komangu-ngutulo noontamanana nenge kiinima yaa fele mOngerki ye?

Ohole yaJesus kayi na omakamba nomanganga aawe, otayi siikile ayihe, noonkondo dhayo otadhi tu mangele kuumwe meitaalo sigo okugaluka kwOmuwa gwetu Jesus Kristus.

Lukas Jafet



Omushamane G. Reeh, K. Dumeni na Peutikainen tawe likundu oipopiwa yOshoogalelengerki

Ooranda dhi thike po 26,140 odha gandjwa kaamwameme ooitaali muSoomi, muSweden nomuNdowishilanda paindilo lyOngerki ndjika, opo yi lande oombakumbaku dhokuhumitha komeho iilonga yOngerki mokuyakula aayakulingerki miitayingerki ayihe ine, oshitayingerki kehe ando ombakumbaku yimwe.

TWA PANDULA

Outeku womeefikola owo shimwe shomoiilonga oyo ya longwa nou-djuu medu eli letu lOvawambo. Haashike kombinga yovalongi mokuhonga mofikola ndelene kombinga yovahongwa yo voovene, va shakanekwa komashindo mahapu oo a pula eenghono davo adishe nelididimiko lihapu, nghe momikunda yavo, momaumbo avo ile meendjila davo nokuli.

Eshi osha hovela momafimbo ootatekulu ava va mona omhito ei yehongo nde oshe litwa yo fiyo omefimbo lexumokomesho tali dalwa. Umwe womovahongwa vopai-fe eshi a konakona ekwafo laKalunga olo a mona momafimbo aeshe oo okwa fikama nokupandula Kalunga omolwonghenda oyo e i tilila moshwana shetu, opo va dule okuyakulafana momaudjuu avo. Ota ti ngaha:

“Kovanaitukutuku amushe, ofye ovahongwa ohatu mu pandula molweemaila diledile oku tu etelela nde inapa monika nande okapeni.

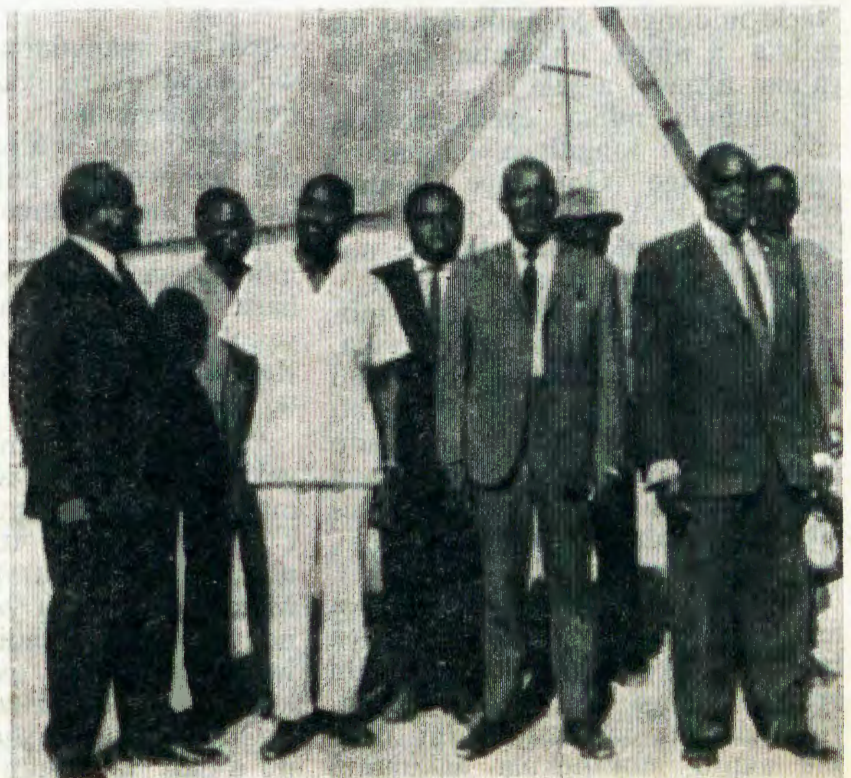
Tangi unene, tate Kalunga ne mu pe omukumo neenghono dipe mokukalamwenyo kweni akushe. Ofye ovalihongi mexumokomesho loshiwana shetu, tate Kalunga ote tu kwafa nenge medina laye hatu longo ehala laye.

Ohatu pandula yo ovavатели vakwao moimima i lili noku lili kai shi omalweendo. Ohatu mu halele enangeko nouputa laTate Kalunga.”

I. P. Kamati Nehandi

Ofikola yovamati, mEngela

Aatonateli
yiitayingerki
mOngerki yO-
wambokavango
pamwe naape-
ha yawo ayehe
oya li wo ya ka-
la moshigongi-
ngerki mOka-
hao. Otaa thi-
kama mpaka
pamwe nomu-
mbisofi Dr. L.
Auala



Nda fudapo mangha

Kovawiliki vovanyasha nokovanyasha amushe mOshitaingerki shaUukwanyama nomOngerki aishe yOwambokavango nookaume amushe mwa kwafange meyakulo alishe eli loshionga shovanyasha nounona, onda fuda po mangha ngashi omaufomhangoo taa ti:

Omunashionga keshe moshionga eshi ota longo mo ashike eedula nahanoo. Nongenge da fika ota fudapo ile a hoololululwe vali, hano ame nda longo nokuli omido 7 nonda fuda po nee.

Apa onda hala okupandula Tate Kalunga ou a pele nge eyakulo eli lovanyasha nounona. Ohandi pandula wo Epangelongerki lafimana olo la li lelinekelela nge oshionga shovanyasha nounona omido adishe 1962-1969 odo da ka pita mOshitaingerki shOukwanyama. Hano nda fudapo mangha. Epangelongerki ola nangeka nge meongalo lomEngela.

Omuyakulilanduli wange oye Omuyevangeliste Immanuel Mungungu wokEdundja. Ohandi mu halele eenghono nomukumo mupe moshionga shaye Kalunga e shi punike nokomesho.

Kombinga yange ondi udite itandi dimbwa oku mu ilikanena one ovanyasha nounona, osheshi one ondjakulwambinga yange yotete moshionga shange shomuvangeliste. Onda linekela ohatu ka monafaneni luhapu moyoongalele inene nomeenhanoo.

Gwaandjeni oko tuu ta ka ya

Ngele ndoongi a yi molweendo itagaluka a ninga onkambe ota ka galuka ngaashi a yile.

Etumbulo ndika eyele lyowala ndyoka hali longithwa momalaka omakwiilongo. Oondunge dhomulyo odho dhoka kutya, omuntu ita lunduluka nando uukwatya we nonando a ye peni pwa tya ngiini.

Ihe kombinga yimwe otatu monoo kutya haaluhe sha tya ngaaka. Aanaskola ya putudhwa oomwedhi hamano moskola yaatekuligumbo mEngela oya kumitha noonkondo melunduluko lyawo. Koombinga noombinga mokati kaavali okwa uvika omapandulo omanene kutya, o, shalongo gwaandjetu a yile ko.

Pethimbo lyomafudho gawo oya tekula aanegumbo lyawo niikulya taye yi teleke nomizalo taye dhi opaleke nenge oya tekula aamwayina aashona nomikalo tadhi opalele aantu, nokutekula aakuluntu



Werner Shangheta ou a pita mondjakulwambinga yovanyasha nota longo mEngela paife

nda dounona Kalunga ngenge te tupe omalutu a kola.

Apa inandi hala nande okudimbwa omufita wovanyasha mOngerki aishe newilikongudu lovanyasha mOshitaingerki shetu. Itandi dimbwa omayakulo eni mawa omolwoshionga eshi.

Kalunga na xwameke omundilo waMhepo movanyasha nomunye amushe tamu longo mokati kavo, opo mu longe shili nouidiinini unene mokudiladila oshionga shEtumo. Hebr.13:20-22.

Ev. Werner Shangheta

moku ya nyanyudha nondjungu yawo okuyakula okukalamwenyo akuhe kwomegumbo.

Ngashingeyi oku na ashike omwedhi gumwe ya hulithe eputudho lyawo. Ihe haaluhe ya kala nokukuutumba mootundi. Pomathimbo nomathimbo omeho gawo ohaga talithwa muushiinda wawo nyakulo ndyoka tali pumbiwa mo. Rauha Kondjaba gumwe gwawo ota hokolola ngeyi:

“Sho twa thiki megumbo lyomu yakulwa gwetu otwa aadha omusamane ta longo manga omukulukadhi e li megumbo ta tudha omwiidhi noonnyala, oshoka osha li othinge. Mokumona aantu ya tya ngaaka onda si oluhodhi shili olunene omolwoluhepo lwawo, oshoka ayehe aakulupe, yo ayehe kaye na omeho.

Omukulukadhi sho a pulwa shonoo a hala ya ningilwe, okwa ti ku-

AAGUNDJUKA NIILONGA YAWO

Iigongi iyali yomegongalo epe Othika, Uukwambi oya li ya gongala omasiku ngaka metsakaneno, opo yi pendulathane noyi tsaathane omukumo gwokulonga oshionga shetumo. Omusitagongalo Filemen Alungo okwa tamekitha noohapu dha-Kalunga dhomuEf. 1. 27. nokuhiya aakuluntu ya pulakene aagundjuka yawo nenyanyu.

Kombinga yaagundjuka oya li ye na elalakano lyopaali: Tango ye ya hololele sha shono ye shi longo sha zi miilonga yiikaha, nopatiyali okupopithathana noondjimbo nomahokololo.

Kashi shi oshipu okuhokololela aaleshi uutoye womahokololo noondjimbo, ihe kombinga yiilonga yiikaha otatu vulu okuholola shonoo sha monika mo.

Egongelo lyiilonga yiikaha olya li ngeyi:

Oshigongi shomOthika R10-00
Oshigongi mOlukonda,

Othika R 1-22

Kuumwe R11-22

Ongalo yesiku ndyoka ya holola ngeyi:

Othika R 1-67

Olukonda..... R 1-29

R 2-96

Aavali oya li ya kwathele unene moshinima shika shoongalo, onkene twa vulu okugongela ooranda dhi thike R14.18.

WAA PANDULA NOYAKA

Tse aagundjuka Aathika otwe mu pandula shili one aakwetu aaholike Aambaye omolwekwatho lyeni, ndyo ka mwe li tu tumine R15-00. Kulupeni nomeho mayego tu mu taasinine. Iyaloo Omuwa ne mu gwedhele oonkondo mwaayihe mwa hala oku yi longo. Eitaalo lya holoka miilonga.

Tangi kekatho lyeni Aambaye Frans Uulenga naToivo lipumbu

tya oya hala okutsilwa. Opo ihe yamwe yetu oya ka tsa manga yamwe taa opaleke egumbo sigo alihe lya yele.

Konima otwe ya ningile egalikano notwa shuna kegumbo. Otwa li twa ende pamwe nomudiakoni Rauha Kristian natate Matti Seppälä aawiliki yetu.”

Otu na etegameno enene kutya, nomomumvo tagu ya oskola ndjika otayi ka tsikila iilonga yayo. Omugundjuka, gwaandjeni okwi ilongeki-dha tuu a ka tameke?

ETSEYITHO

Pokati kOniipa nondjila ndjoka ya za kOshomeya nokuya kOndangwa, ano pondjila yokOnandjokwe nopate, otapu ka egululwa oshitayi shOstola yaNamagongwa. Otapu ka kala omahooli giihauto gomaludhi nga:

Shell Petrol na Shell regular Petrol. Otaga ka egululwa mbalambala momasiku tage ya, opo aaniihauto mboka taa ende nondjila ndjoka ye na oompumbwe, ya yakulwe mpeyaka. Ethimbo kehe, uusiku nomutenya, omuntu ota vulu okuyakulwa.

Omahooli gomoindjina "Shell super motor oil" na "X-100 Shell motor oil" nago wo otaga monika mpoka. Oompumbwe wo dhilwe dhokombinga yiihauto otadhi monika po.

Thomas Philippus
Box 110, Ondangwa



Ndika olyo ehala epe lyoshitayi shOstola yaNamagongwa. Omusamane Thomas Philippus mwene gwehala, ota monika a thikama popomba yimwe yomahooli giihauto nota tegelele, ngele to ya noshihauto shoye e ku yakule.

Eti-29.6.69 omufitalongwa Jesaya Nashongo, naNdinela Rosalia Hishoono, va hambolafana (va hombola) pangerkipaveta. Utya, otwa li twa pewa ehafo linene. Nd. Rosalia Hishoono a hokololwa ngaha: oye okakadona okatine komounona vovaeangeliste vetu ovo va tumwa mOushimba, ka fukalalela, ka fimanekifa oshilonga shaKalunga sha pewa ooxe ve shi etele oiwana ei. Na okafimanekifa eendjovo daKalunga momhepo yako. Ta! Omulumenhu i ha kuwilile, hanga osho nde li nyenga, ai Ondema i dule ooina ye li dikila oshikutu shitoka shafa oufila. Meme Marta yange osho a tunge onyala, hanga nda hanyuka ta ti: tala mushamane wambulet, eshi oimati yeilikaneno yovafikamini, novakulunhu vako, opo onda kulukifa ondaka hai nyamukula meme: "Heeno, heeno oshili!"



Mefano okudja kolumosho:
Omufitaongalo Malakia Hauuanga nomukulukadi waye Marta Hauuanga. Taku shikula omufuko Ndinela-Rosalia Hishoono nomuhomboli waye Jesaya Nashongo. Ovayakulishivilo tava monika yo konima mefano eli.

E H O M B O L O

Ehombolo, ola lila oikulya moluumbo longerki, oitaafula ya yalwa, oipundi ku pula. Tu lyomutumba koshipundi shaKalangula. Ovataleli veongalo, ova li omutumba komesho. Manga eongalo li li konima, ta! Waima, ovanyashamati vetu ovalongimina oilonga yomwevangeliste xe yaRosalia ou a fukala, ova imba omaimbilo efindanomukumo. Ovamati va ndjanga vafa ookole ongomandobo okombuwa, ongomilunga daNdangwa, ta! ova yelifa Kristus Jesus mehombolo eli. Hai ti: Waima, oko kunye, ou li ngahelipi nge to i mehombolo? Oho yelifile mo lyelye? Mo ihamu kala mu hena kamwe ita ka pungauka u wete. Mehombolo eli letu Jesus Kristus okwa yelifilwa mo kovamati vetu. Ikongi yongobe yahaivinga yanashitai shiyala, oita oyeni, ootate ova kulupa, oshilonga ve shi tu pa.

Konima yaai, tate J. Hishoono nameme Hishoono, ova kala ofika, nde tava eta ekundo molupe lehistoli lomona, tava ti: "Ohatu hambelele Kalunga Tate, Rosalia wetu okwa daletwa mOwambo, meongalo letu Ohalushu, ovafikamini vaye Ev. A. Naulondo nameme Rosalia Naulondo. Otwa endele mehauto, nde tali kandoma, vahapu va teyauka, Rosalia a xupifwa ina mona oshiponga. A pita moseminari 1967 mOkahandja. A kala omulongi mOttiwarongo nosho tuu. Fiyo Omwene e mu fikifa mehombolo. Ohatu hambelele Kalunga, okakadona ketu ina ka eta ohoni meumbo letu."

Omukulunhu wofikola meester R. Jesaya omulongi waRosalia a eta omakundo aa, "Oiwana yetu tu diinineni ofikola, opo tu yakule oshiwana nongerki." Okwa popya nomukumo! Fiyo a xulifa nelikano.

Malakia Hauuanga

Ou shi shi tu?

Ombelewa yaagundjuka MOshakati otayi tseyitha ngeyi kutya, oshigongi shaagundjuka yongerki ayihe oshi li ko 1-5. 10. 1969, mOlukonda.

Nomolwethaneko lyoompumbwe dhiikulya tali ka pula R2,500, omukwashigongi kehe okwa tegelelwa e etelele R1.00 omolwiikulya. Etelele wo iililomwa yoye, opo eyakulo li kale epu.

Osipea, Sumina nenge 10c yendhindhiliko, shika otashi dhimbulukithwa ashike. Iilongekidheni noku-galikana.

OYA LI YE MU IKUNDU MANGA YE KEE SHI SHI

Aamati yomOvenduka oyi ikundu Rev. Jason Amakutuwa, omutonateli gwoshitayingerki shUuningini, manga ye kee shi po sha. Oya tala shoka taye mu ningile manga inaa tsikila ondjila ye yokuEtiopia numvo.

Manga e li po ohaluka ota etelwa R5.43 opo Shitayi, ngashi aauninginino haye mu ithana, a a tale nkene ti ikwatha nayo mondjila. Osha li ompolo ombwana wa komusamane Amakutuwa yokulanda oongaku dhi shi okutalwa moshilongo shaHaile Selasie, omukwaniilwa gwaEtiopia.

Iimaliwa oya li ye etwa pamwe nomadhina gaamboka ya li mondjuvanene ngashi taga landula mpaka.

Tomas Shivute	A. Shaanika
J. Shaanika	T. Makaya
A. Sheehama	M. Simon
F. Iiyambo	Paulus Kakeya
A. Iindongo	Sh. Kakeya
G. Mbwambwala	M. Jakobus
J. Amukoshi	Eneas Utoni
P. Michael	Mateus Paulus
E. Simon	N. Ashilungu
T. Shikagwedha	P. Iindongo
M. Mika	E. Shikambe
J. Geriata	M. Iitamalo
J. Ashipala	F. Nkandi
S. Johannes	S. Johannes
P. Nuuyoma	

Okugandja oku na elago komeho gokutaamba.

Hore yovakurona vetu

Ose vanona tuna kara nehafo lyenene sili morwa hore zovakurona vetu. Vakurona vetu tatu mu pandwire udameki weni moku tu sira sinka mwanayinye.

Ezuvha kenye muna tu pe nondja dokomwenyo eyi tu na pinduka moku tu resera nonkango daHomba nokutu kanderera. Nahena tu nali nondja donontovara noku tu dwareka ikoverero yi na wapa. Epukururo lyewa muna tu korangeda nalyo ipo tu wape kuza kerongerero usimbu. Mokutengura kwetu muna tu zumbera noyo tuna yi hepa ndi eyi tuna kara membo vana tu kwasa nohore zasili.

Moskora varongi vetu tava tu rongo nohore narunye, tava tu pukurura nombili. Hore zaHomba tazi moneka movakurona novarongi

Naava yo ve li keeuniversity otava pumbwa ekwafo letu

Kovanashilonga amushe nokovakwaneongalo amushe mOngerki onkwaevangeli paLuther yomOwambokavango, mongerki yetu omuna ovalihongi natango keembinga ovo tave lihongo meefikola dopombanda. (University) kuR. S. A. Otave lihongo oilongwa yomaludi e lili noku lili eenghatu dopombanda. Ovanafikola ava otave lihongo, opo ve ke tu kwafe mOwambo yetu paemhumbwe odo tve va pumbwa unene. Omalalakano ovanafikola ava omahapu notaa lalakanene oilonga i lili noku lili.

Ovanafikola ava ohave uya kefudo pexulilo lomudo keshe. Keenhele oko ve li ko okokule unene nokuli ohava futu oimaliwa ihapu momalweendo avo, okwaaluka ile okushuna. Vamwe vomuvo inava mona nande oimaliwa (beurse) kepangelo oku lihongifa meefikola dopombanda. Ngaashi naanaa tve va shiva keshe umwe peongalo leni ile moshitayingerki sheni onimanima ile we va lesa pamwe pelili moifo.

Otu na nee okwoongela sha sho moshitimulongo shetu tu va kwafe. Keshe umwe okwa shiiva ota kwafa lyelye paenghono odo ta dulu. Ngeenge oto longo oshinima ove u shi landifepo ile to kufa oimaliwa mondjato yoye mwene, opo u va kwafe u pupaleke omalweendo avo. Osho hatu teelee ve ke shi tu ningile oshinene, onghee nafyeni tu kendabaleni tu va ningile sha manga pu na omhumbwe yoku va kwafa. Moku shi ninga ovalihongi ava ohatu va u difa ouumbo mokulihonga kwavo. Inatu dimbweni yo oku va ilikanena, opo Tate Kalunga e va pe eenghono moilongwa tave i lihongo. **V. B. Kanhalelo**

vetu. Awo hena vana kara neruganeno kumwe lyewa mepisuro lyawo navenye.

Hore zangesi zina kara nerwameno lyasinke? Vakurona navenye varongi, ndi vavali wovanona vana kara nohore nehafo kupisura rudi romongura ru wapere siruwo tasi wiza. Nerwameno lyawo ilyo eli rudi rugaruke mononzo daro. Ipo ru kare nerago kontunda zevu nahena moukwanarunye.

Tatu mu harere etungiko lyaJesus Kristus mosirugana seni sepisuro.

Gumwe gwovanona

EPULO LYAJESUS KAAVU YAUSAKOS

“Owa hala ndi ku ningile shike?” oyo etumbulo lya li lya leshwa komuwiliki gwoshigongi shaagundjuka, Aambaye manga ya li taa talele po aavu moshipangelo shaUsakos.

Omuwiliki gwoshigongi mOmbaye omusamane J. N. Aktofel, pamwe nomuyevangeliste gwokOmboni omusamane Benjamin Shuuvuni, oyi ile pamwe nongundu yaaagundjuka okuvangelitha evangeli muUsakos.

Moshipangelo shaTB moka mwa li aavu ye thike lwo-120 omusamane Aktofel okwa tsu aavu omukumo kutya, omuvu omunelago oye ngoka ta yamukula epulo lyaJesus sho ta pula “Owa hala ndi ku ningile shike?” Ye ota yamukula “Omuwa ondi aluke ishewe.”

Oohungi dhomahokololo noondjimbo odha li dha ningwa moshilongo shika naapulakeni oya li yu uvite uutoye. Ongoye omukriste oto dhimbuluthwa okugalikanena aavu ye li miipangelo.

Longeleni Omuwa nenyanyu esiku kehe.

J. N. Aktofel

OMAPANDULO

Otatu mu pandula unene one amuhe mwe tu tumine omakundokumagidho gomohapu dhaKalunga. Unene tu oondjimbo dheni odhe tu tsu omukumo kokukala muundjendi mevi ndika. Tangi kohole nokehawo lyeni sho hamu tu dhimbulukwa ngeyi koshipala shOmuwa.

Omuwa Jesus ne mu indjipalithile uuwana kehe mu ayihe mwe yi pumbwa. Imbeni 449 mEhangano.

Nikodemus Nangolo

OMUKWETU

Oshifo shOngerki onkwaevangeli paLuther yomOwambokavango
Die Tydskrif van die Evangeliese Lutherse Ovambokavangokerk
Oha zi mOniipa.

Omukuluntu gwoshifo/Hoofredakteur Omumbisofi Dr. Leonard Auula,
Amushanga/redakteur S.Ekandjo
Ondando komumvo mOwambo 70c kUushimba nOkavango 90c

Kombanda yomafuta R1.30.

Oondando nomambestelo naga tumwe kOmukwetu,

Oniipa, P/B. 2015 Ondangwa, S.W.A.

Oshinyolwa shuule

wondeimi	1	otashi futilwa	R1.00
oondeimi	2	—”—	R1.90
oondeimi	3	—”—	R2.70
oondeimi	4	—”—	R3.40
oondeimi	5	—”—	R5.00

Oto vulu okutuma efano lyaashoka wa hala shi tseyithwe nomatumbulo wo gasha ngele ope na.

The Finnish Mission Press Oniipa
P/B 2015 Ondangwa S. W. A.