

# OMUKWETU







## Hano okaana okalye?

Epulo eli otali linyenge meemwenyo davahapu pefimbo lopaife. Nande osho nokuli onghedi yoshiwana shOvawambo yokuvalulila okaana memona laina, fiyo onena eli vahapu, ile tu tye nokuli ovalumenhu avesho ova nyengwa okwiitavela onghedi oyo.

Oshinima eshi tashi anye okwiitavelwa kovalumenhu shiimba ope na sha sha puka. Osha dile peni hano? Onghedi oyo oya etelwe koshike?

Oya dile meudafano ile omouhefi wovalumenhu kwa li inava koneka nawa oshinima eshi kutya, otashi ka eta oimati ya tya ngahelipi, ile osha dile molwoodi loo venevene lwotikitiki?

Sho vene oita yovakainhu alushe oilulu. Nde osho ngo nashi twikile ngaho? Omaumbo naa hovele eenghundafana, opo ku diladilwe nawa kutya, okaana okalyeye. Omaudafano naa lalakanene okutala yo oshiwana shomongula.

Okaana meumbo ngenge taka talika emona lonhumba, pamwe nemona olo omunhu e li kwete, nashi shiivike nawa kutya, emona olo oli dule aeshe, osheshi lo itali ka xula po. Otali ka ya fiyo omoheli ile fiyo momwenyo waalushe.

Xe, ile ina mokukala e li kwete na tile nde na kakame, osheshi ovaengeli meulu tava tale alushe oshipala shaKalunga molwounona tuu ovo.

Eshi otashi ka fiminika omudali keshe a kale a pumbwa ekwafo lamukwao, noka pe na vali oo ta ti, kutya, mu hole okuula ounona wovanhū, kave fi ovakwetu.

Ou ta diladila oukwapata mouteku wokaana, okwa fa omunhu ta fudike oshiwana ashishe melambo nde ta fufile ko. Ye omunhu iha mene nee ngashi oshilya. Ngenge okwa pakwa nande kwa li e na omwenyo ota file mo ashike.

Shiimba omesho oye odjapo moshinima tuu eshi, eshi taa tale oshiwana nghee tashi fi oshuunguungu, nde otashi liekeleshi ashike, nomomaumbo itashi hala mo vali, osheshi momaumbo tamu diladilwa oukwapata efimbo keshe novadali itava tu kumwe moinima yavo.

OVanyasha ava tava kana momaumbo okombada yedu, otashi ulike yo nghee tava kana nomeumbo lomeulu. Hano otashi shekifa edina

## EENHOKOLWA DEPANGELONGERKI

1

Epangelongerki la lesa eenhokolwa doungudu vokukonakona ovatumwa vape mokulihonga elaka lOshiwambo nola lesa nehafo eendombwedi dovatumwa vape ovo va pita mekonakono lotete lOshiwambo. Oshikwanyama: Paula Heikkilä, Oshindonga: Keth Sainio.

2

Epangelongerki la panda notali koleke efaneko loshoongalele shovatumwa sheti - 31. 1. - 1. 2. 1969, muElim, onhokolwa 7: Omolwekwafo lovaevangeliste moihakulilo ovatumwa noilyo yaELOK i tule sha mo-shikefangerki. Meme Marja Mattila kOnandjokwe ta dulu yo okutuminwa oimaliwa ei. Ovafita novaevangeliste otava indilwa yo va talelepo ova-naudu moihakulilo.

3

Epangelongerki oli na olupandu linene eshi omaindilo ongerki yetu aa a tambulwa nawa kOngongahangano yovakwaLuther mounyuni aushe, notave tu kongele oimaliwa yoku tu kwafa moilonga ei:

1. Lupala Experimental Farm,
2. Bushmen Settlement Scheme, Kongo,
3. Engela Adult Education Institute,
4. Agricultural Machinery Station, Oniipa,

4

Epangelongerki la lesa nohokwe ehokololo lomuwikidiakoni Ottilia Kaholongo, osho yo omahokololo oshilonga shoudiakoni mongerki aishe, 1968. Pwa dimbulukiwa omuvalu waavo va kwafwa ou fike 10441, pamahokololo ovadiakoni omulongo navaheyali oo a holoka po.

## ENONGELO LEENHUMWAFO TALI TI:

Ovahongwa avesho ve linyolifa menongelo leenhumwafo nge va xulifa ongudu keshe nova pewa eendombwedi ile inava xulifa nande ongudu imwe ove fike 1211 ashike.

Enongelo leenhumwafo otali mukundile po unene noku mu pandulila oudiinini weni, eshi mwa kala noku!ihepeka nokukonakona Ombibeli eendjovo daKalunga. Onawa, omukuluwonale a ti: Shivalula shi nondjabi." Nanye, ondjambi otamu ka futilwa. Ihai lyatelwa pwanga, woo omutumba ihau eta sha. Ka shii-

mba we li monena mo ngaa sha mekonakono eli. Kalunga ne mu punikile eeshali odo mwe di pewa.

Paife otwa hovelani vali Omudo mupe noilonga yawo. Enongelo leenhumwafo nalo otali hovele oilonga yalo yoneudo. Ava mwa hangika mo, twikileni hano nawa apa mwa hangika: Osho yo ovo mwa hala okuhovela okuninga ovahongwa venongelo leenhumwafo, omhito opo i li. Tumeni divadiva omaindilo eni pamwe nofuto. Onhumwafo imwe otai futwa 25c aeke kOwambo, kOushimba 35c adike. Onhumwafo imwe oi na oupandi 8 nokapandi keshe oke nomapandja 4, amwe okudule pwaane.

Ava mwa hovela nalenale konima yefimbo lile, ndele kamu xulifile, twikileni hano opo mu li. Ino fya ounye, omutondadi ota hafe. Osheshi mokukonakona eendjovo daKalunga to kumikwa omukumo mupe. Tu dimbulukweni, ovakwetu ovaholike, omutondi wetu a hala oku tu umba ounye. Ombimbeli tai ti. "Omuyuki wange ota kala e na omwenyo okokwiitavela, ngenge ta shuna monima omwenyo wange itau mu hokwa." Hebr. 10:38. Luhapu ounye nelipyakidilo tali tetekele eshunomonima. Tu lungameni hano tuha fyuunyipikweni komutondi okulesha eendjovo daKalunga.

A. Muatotele

## OVAILIKANENI VOMONGERKI YAKRISTUS JESUS

Ohandi mu indile nelinekelo lakola shili amushe ovalikani, mu ilikane ne nge pamwe neumbo lange, mu twale nge koshipa shaKalunga. Nanye yo ovanashilonga mongerki yaJesus, opo naame yo ndi ka fike koipundi iyapuki moukwaalushe.

Ev. P. Hamukwaya

laKalunga ngenge umwe wovadali ta diladila kutya, okaana okaye kake fi yo kamukwao ponhele yokudiladila okaana otwe ka, hano inandi ka ndele otwe ka pewa tu ka tekulile oshilongo sheulu. Unene oomeme lidilululeni moshinima eshi.



## Okwiifupipike sigo okusa



*Jesus ta longitha okasino ka mangululwa*

Eifupipiko ohali dhimbululwa mokukala kwomuntu, ando ngashi tu tye omuntu oku li po pamwe oku nedhina lya simana, e na oondunge uuyamba, ye e ti ifupipike. Nge ti itala ye mwene ita mono muye iini ma mbyoka twe yi tumbula. Ihe momeho ge nomomadhiladhilo ge mwene oti imono oye omuntu gwowala nohepele.

Omukulili gwetu okwa kala muuyuni muka omwiishonopeki shili. Nando oye olupe lwaKalunga ina hakana a kale a fa Kalunga, aawe, okwiuhula nokwa zala olupe lwo-mupika. Joh. 12: 12-14.

Otekisti yetu otayi tu hololele

### ETUMO NATANGO OKO LILI

Jesus te tu tumu ta ti: Indeni ka ningeni ovanhu aveshe ovahongwa vange, noku va shashela medina laXe nolOmona nolOmhepo Iyapuki.

Etumo eli ohandi ke li pulwa, noto ke li pulwa yo.

Ou na ediladilo li li ngahelipi, nehalo loye olilipi po mokulonga oshilonga shetumo?

Ou lwete tuu nghe pe na oiwana ihapu i li momulaulu fokofoko? Omulaulu owe va tuvikila nouyelele wOmwene inau va yelesa nande.

Omesho avo a pofipalifwa noma-twi avo a fita nde itava dulu okuuda ondaka yOmwene eshi tai ti:

Lidilululeni osheshi ouhamba weulu owa ehena popepi Mat. 3:2.

Omolwashike? omolwaashi kape na ou te va ulikile ondjila. Omukwetu ou li peni? Opokamba to nu, ile omeumbo ashike ove ito ningi sha?

*Maria Nd. Mbidi*

nkene e ya muJerusalem molupe lwaa nesimano, olupe lwohepele, a kawila "kugwamululu" te ende kokasino. Onke uuyuni wa nyengwa oku mu dhimbulula.

Ihe yamwe ye mu tsakanene tuu ongomukwaniilwa gwawo. Moku-kutha iyale yomilunga nokwa iigidha "Hosianna na lalekwe nuuyamba ongoka te ya medhina lyOmuwa."

Ano oye ngaa omukwaniilwa ngoka aaprofeti ye mu hunganeke te ya a kawila okasino, te ya omuneifupipiko. Sak. 9:9.

Eifupipiko lyOmuwa Jesus tali holoka mokukala kwe akuhe nome-longo lye, "Omwana ita vulu oku ninga sha muye mwene," Jon. 5:19. Noonkwawo, "Inandi za megulu okugwanitha ehalo lyandje mwene."

Mondjila ndjika Omukulili otu ukilile kuGolgota, nkoka oshilongahupitho she tu gwanithilwa. Nando okwa tseya ashihe tashi mu tsakanene muJerusalem, onkene tuu otayi, a humbate oondjo dhetu. Iihula uuyuki nuuyapuki, ye ta humbata ohoni yandje, noonyata dhandje.

Omolweifupipiko lye okwa vullika sigo okusa, eeno sigo okusa kwomomushigakano. Onke Kalunga okwe mu lenge nokwe mu pe epangelo lyaayihe.

Omuwa Jesus okwe tu thigile oshiholelwa sho kwa ti: "One mwii-longe ndje, oshoka ongame omunambili nomomotima ondi ishono-peka."

Nokwa ti wo, oshoka ngoka ti inenepeke ota fupipikwa, naango-ka ti ifupipike ota nenepekwa.

*Sakeus Shaduka*

### Etameko eshona lya tungu oshindji

Shika osha holoka 10 Juli 1966 sho aanaskola Aakwaluudhi ya gongalele moTshandi, mewiliko lyomusita Sebulon Ekandjo. Okwe ya fatululile nkene ye na okukala naakuluntu yawo naagundjuka ooyakwawo. Okukwathathana, okukumidhathana nomokuhumitha oshigwana komeho. Meme L. Angolo a kwatha wo mushika.

Osha li onguudhano, ihe nani osha pendutha nosha hwameke omadhiladhilo. Elalakano lyawo: "Lya, ngoye to koleke." Mokulya ngeyi, ya koleke omukwaniilwa gwo-

## OTU HOLE LYA TULA, KATU HOLE LYA TUMBU

Okuza pehulilo lyomumvo gwa zi ko sigo opetameko lyomumvo nguka ongerki yetu oya taamba ishewe omagano omanene gaatumwa mboka ye ya okulonga nokuyakula mpaka.

Omupangi Enne- Maija Mikknen, ota longo ngashingeyi moshipangelo shaNgela. Aapangi Päivi Kauppi-nen na Taina Pelkonen, otaa longo moshipangelo shaNandjokwe. Aye-he mbaka olwo lwotango lwawo okuya kOwambo.

Omulongi Kaisa Lahtonen, okwa galuka olutitatu nota longo ngashingeyi mOsemenali mOkahao.

Kalunga oye mwene ne ya kuthile po ezaza mokulonga oshimpungu shawo moshigwana shetu.



*Tate S. Shaduka nokamwana*

shilongo shawo sho ye mu talele po nomaimbilo nokuhokolola uutewo, omahokololo nosho tuu.

Eti - 1Juli 1967 ya gongala ishewe noya kundathana nkene ye na okukala po, opo oohe nooyina ya mone kutya, oye na oyana mooskola.

Pehulilo lyomuvo 1967 ya gongala, ishewe nomusita S. Ekandjo e ya hokololele oshindji kombinga yaa-gundjuka, muZambia nkene haa ningi Mefudho lyaDesemba, omuvogu, oya kundathana iipopwiwa yi ili noyi ili tayi kwatha, ta yi tungu mokukalamwenyo. Muka tatekulu Henok Haufiku natate Vaino J. Kaapanda oya kwatha mokupukulula miinima yuugundjuka. Osha pula omasiku gaali.

Maagundjuka yaTshandi aana-skola ya tsu mo omutse, mOnangalo ya fala mo omuhelo.

Sho tu li methimbo lya tya ngeyi omugundjuka kehe owa tegelelwa u kwatele komeho, u kwathe, u pukulule ngoye u ambidhidhe muu wanawa, pa Jes 50. 4.

*Abner Shigwedha*



# OMWENYO GWANDJE HAMBELELA OMUWA



*Meme Frieda Elago ukata okamati kawo nenyanyu*

## INO HOKANA OLUTIYALI

Yayee! ootate hamu longo kondhate. O, omwa yi mu ka longe. To thigi po omukulukadhi nuunona. Omolwashike tamu hokanununa nando kamu shi mOngerki? Ota mu hokanununa niimaliwa nenge nuunima uukwawo ngaashi oonguwo? Wa mono Omuharero ke na omusamane ngoye to inanene po, ngoye wa thigapo omukulukadhi goye gomOngerki kOwambo. Oto ningi nee sho to zi miilonga ouka kOlukanda. Kokomboni iho ende ko we. Oto adha wa kongelwa okapapi naandi lya konda. Oto fuula nee anuwa yakweni. Nena oondjokana dhomOngerki we dhi dhini. Olye nee e ku wete? OKalunga ashike. Sho to ka za hono oto ti: Kanda li handi mono omake.

Amuhe naamba hamu longo mOwambo osho mu li. Inamu hokana we kune yene olutiyali. Dhimbulukweni Kalunga gopombanda. Simaneka omukulukadhi gwoye gomOngerki. Lesha oohapu dha Kalunga esiku kehe. "Motya vi," ite ku fala melago lyaaluhe, nando nando. Simanekeni ano oondjokana dhopakriste lela. Ndhindhilike ni kutya, otamu ka pulwa nkene mwa dhiginine oondjokana. Kalunga sho e ku pe oondjokana ou ninge omukuluntu.

Nadhi dhigininwe ano. Inamutya we onda ka longa nani owa ka hokanununa. Sho to ya owa hala koshililo ngoye u na omagumbo gaali. Sho inoo nwa ngaa shoye mweneshotombo nenge ocuca?

Okudhiginina Ombimbeli yoye osho ashike tashi ku kwatha tate!

*Joseph N Amtenya*

Esiku eti-16. 12. 1963, otwa dhana oshituthihango shetu mongerki yomOniipa. Olya li esiku lyenyanyu kutse, nokookuume ketu ayehe. Omeho ga adhima, oga li taga monika koho yewiiwili, nomutsuhu omuludhe gwa fendongondongo, ogwa li tagu adhima moonte dhetango.

Otandi dhimbulukwa, omusita gumwe okwe tu kundu nokwa ti dhimbulukweni: Haaluhe tamu kiimonena etango tali imemeha. Konima yomasiku otwa yi kOtjimbingwe. Mesiku 10. 9. 1964, otwa pewa okanona okakadhona, moshipangelo shUusakosa. Oka kala owala otundi yimwe, noka mana oondjenda.

Haaluhe tamu kiimonena etango tali imemeha. Etumbulo ndika otwe li uvuko nawa shi vule nale.

Konima yomasiku ngaka okwa landula ethimbo edhigu. Netango lyetu luudhile. Eti-26. 7. 1967, twa pewa ishewe okanona okakadhona moshipangelo, Onandjokwe. Naahaka, okapitilile po ishewe. Ngaashingeyi, twa li tu uvite otse aa-

## OMUMWOYE OMO TUU E LI MEGUMBO?

"Onde ende akuhe nokukonga, nokukonga, ihe inandi mu mona ko, inandi mu mona ko, ihe aaye-e, oluvalo, te!"

Meme Kornelia ka li e shi oku shi popya, ka li eshi okushi hokolola, osha li she mu nikila, ndele osha li she mu timpilila tuu shili, oshoka omwana ine mu mona ko.

"Onda lombwelwa ashike ongulohi yOsondaha yontumba kutya, omumwandje oku li kEpaya a tsuwa nomwele. Okuza mpoka kanda li ndi shi sho ndi na okuninga. Kanda li we ndi na omadhiladhilo gasha."

"Sho nde ya mOshakati ndi pule ngele okwe etwa mo, inandi mu mona mo. Ndi ye mOnakayale moshipangelo iha hokololwa mo. Sho nde kiidhenga koshipangelo shAnamulenge mOmbalantu, namo wo iha dhumwa mo," osho meme Kornelia a hokololele omutoolinkundana.

"Ye ngono kEpaya okwa yile ko nomulumentu gwe?" "Aawe nongele oku nomuluntu, shila oya monathana naye nkoka."

"Onda ningi konyala uule womasiku gaali inaandi makela sha. Nandi makele sha okunwa nda landelwa ehalasa lyotombo ongula yonena komulumentu mwene gwokakamba nkoka, opuwo. Uumaliwa mbu nda kuthile nde u manene mokufutila iihauto mbyoka ye eta ndje mOmbalantu."

Meme Kornelia ogwomegongalo lyaKaku.

namupya, tu vule aanamupya ayehe yomuuyuni. Mokati komaudhigu ngaka, nomakwawo inaandi ga tumbula, otwa tale!wa po ku kuume ketu, oye okwe tu pe etumbulo ndi: "Omwenyo gwandje tegamena Kalunga nokumwena, muye hamu ziekwatho lyandje" (Ps. 62: 1). Esiku eti-24.8.1968, otwa pewa ishewe okanona okamati moshipangelo, Onandjokwe. Mpaka otatu mono meme Frieda mefano ta nyanyukilwa okamati nka. **Elago - Robinson Tangeni - Ben - Salomo.** Mokutala okamati nkoka otwa dhimbithwa mbiyaka yonale. Omuwa okwa lombwele oshigwana shaIsrael: "Inamu dhimbulukwa iinima iikulu yonale, inamu dhimbulukwa iinima yoshito nale. Oshili ongame tandi shiti oshinima oshipe." Kalunga kwe tu shitile oshinima oshipe megumbo lyetu. Nangoye ngu u li momilema dhoondjokana, kaamu na uuyeleele washa, tega Omuwa noku mwena, oshoka Kalunga Oye Kalunga kekwaatho lyoye.

*Pastor S. Elago*



*Kornelia Adolf*



## OILONGA YOVANYASHA MOUSHIMBA 1968

Omudo 1968 ovanyasha ovalumenhu va ongala nouidiinini moyoongalele yavo peendjovo daKalunga nohatu pandula Omwene eshi omhepo yaye tai longo mokati ketu. Onye ovawiliki mwa wilika oyoongalele apa mOushimba oudwali, eenghono daau wokombadambada nadi mu hapupalele. Otu shi shi ope na eefina di lili nodi lili mokati koilonga, ndele ovamati vOmwene va diinina nawa noupenda inava tonyala okwongala moyoongalele yavo, nohatu va pandula.

### OUNYE NOUDJUU

Onghenda kovamati vahapu ovo vehenakonasha neendjovo daKalunga tava kala moinima oyo tai kanifa omwenyo. Vahapu nokuli ove li momhepo yonena youheenakonasha, okusheka okudina okwoongala peendjovo daKalunga. Otava nghundipaleke luhapu okwoongala kwavakwawo peendjovo nomoyoongalele yopaKalunga. Neudo yo omumati nomushamane ove, konga Omwene osheshi efimbo olaxuunina. Diinina okulesha nokukumaida nokulonga fiyo ohandi uya. Osho Omwene ta ti kwoove u li apa mokati koilonga nOmowambo yo.

Apa otapa shikula eenhele nefiyafano pashilonga shopamhepo moyoongalele yovalumenhu mOushimba. Mokwoongelela emona loshikefa shoshoongalele omo va ongala mo oundwaali apa ve udite omwenyo womeitavelo.

Tsumeb Corporation	R11.22
Tsumeb Smelter	R7.31
Tsumeb SWNL	R3.84
Windhoek Compound	R45.77
Windhoekstad	R16.00
Klein Windhoek	R13.75
Gobabis	R14.45
Luderitz	R31.20
Okahandja	R9.34
Otavi	R9.60
Kombatmine	R5.12
Grootfontein	R104.00
Otjiwarongo	R9.26
Outjo	R38.47
Walvisbaai Compound	R49.59
Swakopmund	R128.32
C.D.M.Oranjemund	R10.00

Noneudo ohatu pandula oudiinini woivalumenhu ovakriste moyoongalele yavo eshi ve na oshisho okwoongelela oshilonga shopambepo mokati kavu. Ova findani momudo waya 1968 ovo ngaa natango Ova shiwakopo. Ovatiyali Ovashaanda. Tapa shikula natango oyooongalele yovanyasha ovadalelwa mo, eembwiti Windhoek Katutura va ongela

Tsumeb Katutura	R201.65
Walvibaai Katutura	R12.66
Ovafindani muRynse Mission ovaWindhoek Katutura.	R41.00

Ava va kala mooyoongalele ova li 1342. Noneudo yo diinineni mokulongela Omwene. Omwene ne tu wilikeni. Ye mwene ota ti: Diinina okulesha, nokukumaida nokulonga, fiyo ohandi uya Tim.4:13

*Gerson Max omufita wovanyasha mOushimba*

nkoti okwa ya kOsoomi omafiku aa a ka twikile natango okulihonga outeologi.

Tate Elia okwa kala odula imwe ku-Paulinum, Otjimbingwe, okukonakona omatameko outeologi. Inaku shiivika nawa natango kutya Elia ota ka kala efimbo li fike peni, ashike ohatu teeleele osho tashi ka dja ko.

Tate Elia okwa hambola noku na ounona vavali. Meme Diina Niinkoti nounona ova shaala po, ndelene eumbo alishe ohatu li halele omapuniko mahapu atate Kalunga pefimbo olo letukauko lavo.



*J. Hafeni Mufeti*

### VA YA VE KE LIHONGE

Ovanyasha vavali Johannes Hafeni Mufeti naPaulus Musheko ova fiya po Owambo omafiku aa ve ke lihonge kwinya kOtjimbingwe outeologi ( ehongo lOukalunga ).

Ava otava ka kala pamwe nongudu oyo ya hangika ya longekidwana nale nokuli odula imwe. Omolwoilongwa imwe tava pumbwa eendelelo muyo, ova ka hovela diva va tetekele ehovelo lofikola youfita neudo, oyo va hangike tava ndangula ko.

Meme Rauha Voipio oye omulongekidi wavo kwinya fimbo ofikola inai hovela. Shiimba ava otava ka shakena navamwe tava di mongerki inya yomOushimba.

Aveshe ove li hongu fiyo St. VIII momido ei ya ka pita, nde va hangika vehe na oilonga yasha manga.

Paulus Musheko okwa hambola omulongi Elizabeth Handjene, ou a fyaala po ta takamifa eumbo, naJohannes omumati natango. Aveshe ovomeongalo laNdola, nde ohatu va halele eenghono dihapu mokulihonga kwavo akushe.

Omuteologi, omushamane Elia Nii-



*Paulus Musheko*



*Omufitaongalo wovanyasha G. Max*



*Omusamane Elia Niinkoti*



## NDI NINGE SHIKE MOKATI KAWO?

Omuwa otandi ningi shike mokati kaantu yoye. Ngame nguno ndaa na shono ndi shi. Okulesha ohe kakadhala owala, okwiimba ngame omusama ohoni nuumbanda pungame yudha, uunye opungame uli Kalunga kandje. Iilonga yandje inayi ku opalela, yonale noyongashi ngeyi. Oyo iiwinayi momeho goye. Omuwa nda nyengwa okuyoopaleka, Tala oompadhi dhandje noonyala wo. Nkene dho dha kakatela meno no lyuuwinayi wuuyuni mbuka. Omeho gandje ga keuka konima nethimbo kehe ge entamene mominkulo, ohe talatala nda nyengwa okuukilila Omuwa.

Ihe Omuwa ongundu yaahogololwa yoye, ya tegelela ndje ngame nguka oshinima showala ndi kwate komeho mokukwiindila. Omuwa wa simana. Sho he tala nohandi kala mokwiimwenenena. Omuwa euvo lyandje tali popitha ndje. Omuwa ondi iluku inandi opala ine gwana okushi ninga.

Oshoka ondi wete omeho gaamati yoye ga taalele kethikilo. Osho ihaga pathima ngogandje. Pomunkulo ihaa tala po. Konima ihaa keuka ko ongongame. Aluhe okomeho owala ya taalela.

Ihe Omuwa ongame ya tala ndi kwate komeho mondjila yoye, nguka handi uhala te puka, moondjila dhoye adhihe. Oonkondo kandi dhi na eidhidhimiko lya kana, enyanyu nombili kandi yi na. Okukala kwandje kwa pe ndje uusama. Meuvo lyandje Omuwa, ote ningi ihe shike komeho gaamati yoye, sho nda thikama ko ethimbo nethimbo shili?

Omuwa, Ongoye wa pitika ngeyi aantu aanandunge naakuluntu ye vule ndje. Ndi ya thikame komeho nokusiikulula embo lyoye eyapuki? Mulyo mu na oshili yoye ndjono ngame inaandi yi gwanitha. Omuwa sho he ningi omwenyo omwiinayi ite sitha aantu yoye uunye. Omuwa, otii shi gwanitha tuu? sho he kotha omutenya nuusiku, ote tsakanitha tuu oompango dhokukwata komeho mondjila yoye?

Sho he dhiladhila owala lumwe aluke, otii shi vulu tuu Omuwa ote ningi po sha ngaa mpono? Omuwa ngele Ongoye wa pitika ndi shi ninge. Omuwa otandi igandja kungoye, ndi li ngashika ndi li, Omuwa ngele te gu u yambule, te vulwa u kwiinine onke Omuwa ehalo lyoye nali tye paimbilo 238.4) Filipi 4:13)

Omumvo 1968, okuza, 14.2.68, sho nda inekelelwa oshilonga shuukwa-

## EWILIKO LYAAGUNDJUKA MONGERKI



Aawiliki yaagundjuka konimaelela okuzakolumoho Titus Ngula, Tomas Shigwedha, Hendrik Dengeinge, Gerson Max, Pokati; Raili Seppälä, Aune Shilongo, Ottilia Kaholongo, Jason Amaktuwa, Immanuel Mungungu Andreas Kalumbu, Kleopas Dumeni Komeho: Mikka Iilonga naVerner Shangheta

Aawiliki yaagundjuka 13 oya gongalele moshigongi shawo mEngela omasiku ngaka.

Aawiliki mbaka oya zile mOwambo nomUushimba noya kala konyala iiwike iyali nokukundathana iilonga yaagundjuka nkene tayi ke enda nuumvo.

Elelo leumbo laKalunga, ehungomwenyo newiliko lyoonkundathana dhOmbimbeli, oyo ya li iikundathanwa iinene yoshigongi.



Omuwiliki gwaamati muLuderitz Vilho Phillemon Shikulo

telikomeho mongundu yaalumentu aakriste muLuderitz, ehokololo lya tetekele mpaka olya kala ta lyaa dhima aluhe mungame nokukele ngendja meiuvo lyandje, nani Omuwa oku na oonkondo. Kuume, ngoye owa kala neipulo lini?

Vilho Phillemon Shikulo

Oshigongi shaawiliki yaagundjuka shono sha kundathana wo nkene aagundjuka mOngerki taa mone nwa elandulathano lya yela, opo pwaa kale omayooloko momagongalo nomagongalo, osha li sha wilikwa komusita gwaagundjuka K. Dumeni, nosha li sha mono uupe owindji.

Omusita gwaagundjuka yomehalakano mUushimba okwa li wo moshigongi shoka.

Aawiliki ya leshulula nawa okambo OUKAUME POKATI KOVAMATI NOUKADONA. Oya ndhindhilike iitya itatu yi shi okwoopalekwa.

Okambo oke li nawa shaa tuu taka leshwa nomwenyo tagu tala oshigwana shokomeho. Ihe ngele omuntu ote ka lesa ngaashi satana ha lesa Ombimbeli, nena omuntu ote ka uvuko nomukalo omwiinayi molwashi omadhiladhilo gomuntu ohaga longithwa kusatana e taga pilikile oshinima oshiwana muuwinayi ngaashi ga pilikile osuuka miikolitha yoludhi kehe.

One aawiliki yaagundjuka amuhe mOwambo nOkavango, otatu mu halele eyambeko lyaKalunga lya gwana miilonga yeni yokuwilika, opo mesiku lyaKristus ta holoka mu ka mone nkene aagundjuka ya anduka mekolo lyeluwa.

Titus Ngula



# Ovalaule vahapu muSuidwes tava ka popya moradio

Embwalangandjifo olo tali ningwa paife muSuidwes kehangano laSuid Afrika (die S. A. U. K), otali ehene komesho neulumo nope na eteelelo Ovavenduka va ka mone eyakulo olo la lukwa, F. M.-diens, diva konima yeehani mbali, fimbo elongekido laashishe tashi dulika tali twikilwa nangango, opo Owambo i dule yo okumona eyakuloradio F. M.-diens okudja pehovelolo laSeptemba neudo.

Fimbo ovatungi tava ningi ngaho, vamwe ove lipyakidila nokwoongela oipopiwa noishikomwa (programme) i lili nokulili mOshiwambo, opo i ninge hai kunwa moradio. Opwa diladilwa ovapopimoradio va ka kale ve fike 12 ovalaule notava ka tambu-

## Omayoka gaSuidwes

Mombuga yaNamib omwa monika omasiku ngaka eyoka inaali monika mo nale muSuidwes.

Eyoka ndika oli nuule u thike lwopondeimi 12, noli na omeho gane momutse.

Ngele tali ningine mevi ohali shi ningi mepathimo lyeho. Manga lya ningina lya oye eta ko kombanda uumeho walyo mboka wa fa omawe.

Uuzigo walyo inau monenwa nangango omuti koondohotola. Okwa dhiladhilwa eyoka ndika omukwati gwomayoka muSuidwes ote ke li fala koshikunino shomayoka shi li pokati kaJohannesburg naPretoria.

## OMUKAINHU TA NINGI MINISTELI

Israel okwa kala omafiku aa moluhodi linene omolwefyo lominsteli yotete, omushamane Levi Eshkol,

Oye okwa xulifa ashike ombadilila fimbo opo a dile moshoo-ngalele shepangelo omo mwa li tamu diladilwa oinima ikukutu. Hanno okwa fya omutima.

Eeradio noifo oya shiivifa yo efaneko lehoololo lomushikuli waye, nde okwa diladilwa kutya, shiimba omeme Golda Meir, ou a kala shito oministeli yoikwapondje fiyo 1966.

Omukainhu ou weedula 70 okwa tila okuya metokolo noupu.

"Eedula dange ile oukolele woluntu nghi na nao unene, ndelene ediladilo ndi kale ministeli yotete, oixuna ashike. Oshilonga osho keshiwa, unene tuu efimbo eli," osho ye mwene a tonga.

Moshe Dayan, oministeli yepopilo loshilongo oye umwe waavo vanini ina panda ehoololo laye.

la oilonga oyo okudja pehovelolo laSeptemba.

Okwa monika nale nokuli hamushanga omulaule weenghundaradio omushamane Toni van der Smith, ou ta ka longa yo pamwe navalwe.

POshakati opwa hovelwa okutungwa oshungo ileile yoradio tai kala noule weefute 813 oyo paife ya fika eefute 700 nokuli. Otapu tungwa yo onhele yokulongekidila oipopiwa oyo tai kala melongelokumwe naikwawo yokOvenduka.

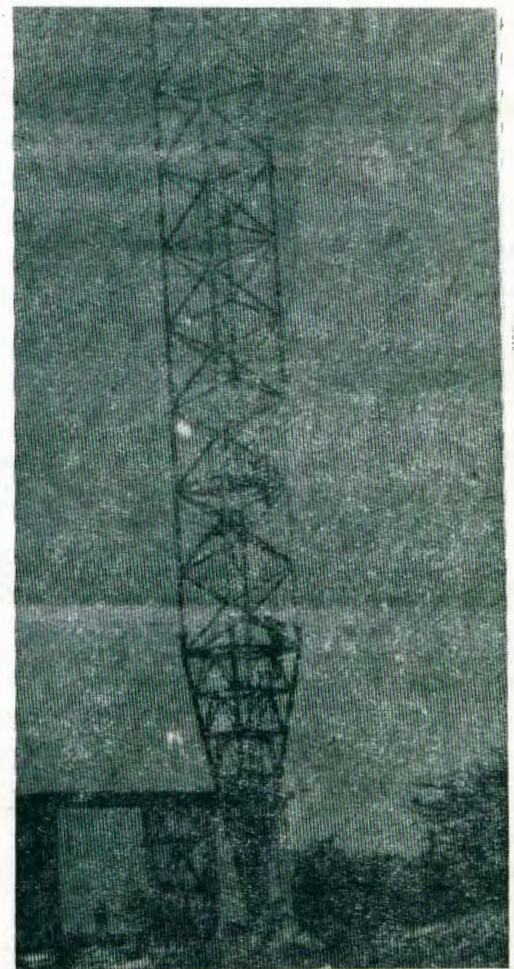
Ope lineekeliwa kutya, eyakuloradio olo otali ka kwafa oshitukulwa shakula shOwambo nOkavango yo, mokupwilikina eenghundana melaka lavo.

Omushamane Van der Smith eshi kwa diladilwa taka hovelwa diva mOvenduka, otaku kala haku popiwa momalaka atatu.

Opwa diladilwa yo Epangelo la Suid-Afrika li ka yandje ouradio vanini oshali ile va landifwe nondado inini kovalaula, ndete eshi inashi djamo mangha nawa. Molwembwalangandjifo olo tali ningwa keyakuloradio la S. A. U. K. muSuidwes, omushamaue P. J. Venter wokuKing Williastown, okwa nangekwa mafiku aa mOvenduka, opo a kale omupashukili weyakuloradio moshitukulwa.



Nakufya Levi Eshkol



POshakati paife otapa monika oitenda ileile oyo tai ka tuma eendaka mombada. Paife oya hanga nokuli eefute 700. Apa otapu monika ashike ombinga yopafina

## Ovawambo va nwa oudio

Ovawambo 42 ova etelwe keshina lokolutenda moshipangelo shaTavi, neendelelo linene eshi kwa dimbulukiwa kutya, shiimba ova lya oikulya youdio, omafiku aa.

Aveshe ava 42 ova kala hava longo molutenda popepi naTavi, nde inava hala okuholola kutya ova lya sha ile ova nwa sha osho tashi va velifa.

Vovene shiimba ova dungila eima lavo mekandiina olo la li inali yela, nde eshi va ka nwa, Shipanga yoota hovele okunyenga Nangolo.

Vaheyali ova tumwa meendelelo linene koshihakulilo shaShomeva, osheshi okwa li ve li pouwi neenghono. Oshipana yavo oi na ovalumenhu ve fike lwope 150.

## EOPALEKO

Oshitewo sha holokele mOmukwetu No. 2, yonuumvo otashi opalekwa movelise ontintatu ngeyi:

"Ne aagundjuka Aawambo, Mu li menongelo" Ano hamegongalo ngashi pwa shangwa.



## "OWE SHI UVA TUU?"

Aawambo ayehe oye hole etumbulo ndika: "Owe shi uva tuu," nenge "Aniwa," nonge taa popi omatumbulo ngano gaali ohaa kala yu uvite elago. Aluhe ngele omuntu a hala okupopya iifundja oha longitha limwe lyomomatumbulo ngoka.

"Aniwa odhoshili." Oohapu dhi li paandja Thomas mpoka oonenelela. "Owe shi uva?" Osho haa pulathana ngaaka ngele ya hala okufula oohapu dhiifundja nomalundilo gaatokokele noga na omutse nondungu.

Iihuna wo sho pethimbo ndika aantu ya hokwa okutantela nokunyanyukilwa iipe ya za momahokololo guumbudhi.

Unene tuu pethimbo ndino li na omahala gomanwino, aluhe omuntu ngele a kutha mo ehalasa limwe nge umbiila wa gwana, osho u uvite iitya ya-



Omusamane Axel Nakambanda

wo niitotahapu tayi iipiitha momakana gawo. Konima yokathimbo uutondwe ashike tau landulwa komanyanathano (omuntu ta nyana mukwawo) noku mu popila muuwinayi - miifundja. Uukumwe nombili oya teka pokati kaakriste omolwiifundja oyindji mokati kawo.

Otatu pumbwa okudhimbulukwa iipango omulongo yaKalunga nokwiiyutha kuyo. Osha fa shi li ngaaka kutya, miipango omulongo yaKalunga aantu oyi ikuthila mo oshipango shimwe shoka haa simaneke komeho giikwawo yilwe omugoyi - ou shi shi? Hashitihamano nga. Otashi ti ngiini? Iipango iikwawo omuntu okwe yi lyatele koho yomaiyuvo ge. Nonge omuntu a fundju, a yaka, a lundile, a popile mukwawo muuwinayi, a haluka oshinima shomukwawo, a dhipaga, nena okwa fa u uvite ina yona sha kiipango yaKalunga.

Omuntu oti italaleke ngaaka aluhe kutya, manga inaandi yona oshipango oshitihamano, a, kape na eyono lyasha.

## ESHIIVIFIO

Ovakwetu ovaholike,

Eendjovo daKalunga odo omutekuli wetu nomuwiliki wetu. Onghe omolwado otamu shivwa moyoongalele ei kEnongelo lovayakuliongalo mEngela. Kalunga ne mu pe eenghono mu fike mo 1969.

4-14.3. Oshoongalele shovawiliki vovanyasha vomoukwanyama. Omolwoikulya keshe umwe 75c.

19-26.3. Oshoongalele shovawiliki vaHamunona Hamukulunhu. Omolwoikulya keshe umwe 50c

1-30.4. Etwikilofikola lovaevangeliste vomoshitayingerki shokOuningini. Omolwoikulya keshe umwe R2.00.

12-14.4. Oshoongalele shovanamikunda vomOndonga. Oshoongalele eshi otashi hovele ongula yefiku tuu olo otundi onhihetatu (8). Meshivo lotete osha lundululwa mo osheshi omafiku oo sha li oku na oshoongalele shovafitaongalo aveshe vongerki kOniipa. Omolwoikulya keshe umwe 25c.

Pefimbo lefudo laJuni otaku ka ningwa oshoongalele shovahongi veefikola doshiwana, efiku otali ka shiivifwa komesho. **Ovahongi ovalumenhu, havakainhu.**

4-29.8. Etwikilofikola lovadiakoni ovalumenhu. Oikulya R1.90.

7-15.10. Etwikilofikola lovafita II lefiloshisho longhalafanopaumwe, oikulya 55c

20/10-30/11, oshoongalele shovakulukadi vovadiakonihongwa.

Oyoongalele ei aishe otai hovelwa noxungi yefiku layo, kakele kaashi shovanamikunda.

Pafaneko la pamekwa kEpangelongerki leti-12.10.1968, ofuto yEnongelo lovayakuliongalo, omolwoikulya kai fi vali 30c koshivike ndele 50c omolwondilo yoinima yefimbo eli.

"Omwene, ame ondi hole onhele yongulu yoye nonhele apa tapa kala efimaneko loye."

Omukulunhu wEnongelo lovayakuliongalo Engela

Aawe, inatu ifundjalekeni oshoka Kalunga iha nyekelwa.

Eeno, pamwe osho ano oshoka nomomagongalo getu aluhe ngele to a dha omuntu ti ihempulula montaneho yegongalo, olwindji ohaku tumbulwa "onda yono oshipango oshitihamano." Tu dhimbulukweni aamwameme iipango yaKalunga inayi tutuka nando omoshitya shimwe. Ayihe omulongo oyi na oonkondo dhi thike pundhoka uuna sho ya zile mokana kOmushiti. Dhimbulukwa wo iipango omugoyi mbyoka wa dhina okuhempulula sho we yi yono nenge owe yi gwanitha nale? Oyi na oonkondo natango.

Etumbulo lyoye: "Owe shi uva tuu" na "Aniwa odhoshili," otage ku pula sha, onkee ano ga dhiladhila nawa ngele to ga longitha. *A. Axel Nakambanda*

## OPOOSA YOPOONGAMBA

Iipindi yopoongamba dhaAngola naSuidwes otayi ka tungilwa opoosa yayo pOshikango, oshifo shoshilongo sha ti. Iipindi ayihe tayi ya mo notayi piti mo, oyi na okweendela moka.

Aayendindjila wo ayehe taa zi nenge taa yi kuAngola oye nokupitila mpoka. Nomathimbo giilonga ya mpoka otaga tameke ponti-9 yongula sigo oyotango omutenya, nokutameka ishewe ponti-3 sigo onti-6 kongulohi.

### OMUKWETU

Oshifo shOngerki onkwaevangeli paLuther yomOwambokavango

Die Tydskrif van die Evangeliese

Lutherse Ovambokavangokerk

Oha zi mOniipa.

Omukuluntu gwoshifo/ Hoofredakteur omumbisofi

Dr. Leonard Auala,

Amushanga/ redakteur S. Ekandjo

Ondando komumvo mOwambo 70c

kUushimba nOkavango 90c

Kombanda yomafuta R1.30.

Oondando nomambestelo naga tumwe kOmukwetu,

Oniipa, Pk. Ondangwa, S. W. A.

Oshinyolwa shuule

wondeimi 1 otashi futilwa R1.00

oondeimi 2 -"- -"- R1.90

oondeimi 3 -"- -"- R2.70

oondeimi 4 -"- -"- R3.40

oondeimi 5 -"- -"- R5.00

Oto vulu okutuma efano lyaashoka wa hala shi tseyithwe nomatumbulo wo gasha ngele ope na.

THE FINNISH MISSION PRESS  
ONIIPA P. O. ONDANGWA