

OMUKWETU





Omumvo

Nge tatu tumbula omumvo nguka, 1969, nena Omuwambokavango ota penduthilwa muye omadhiladhilo o-gendji. Omasiku ga piti otwa dha-na oshituthi sheyapulo lyaasita, yo-mongerki ndjika, yahetatu. Ndika eyapulo etimulongo okuza keyapu-lo lyaasitagongalo yotangotango. Okuza moshituthi shika sheyapulo o-twa pewa omumvo omupe 1969, o-gwo mumvo gwelongekidho lyomu-mvo ethele oshilonga shOmuwa sho sha longwa mokati koshigwana shAawambo nAakavango. Itagu tu kumitha ashike sho gu na oohama-no ndatu, mbali dhomudho dha pi-likwa, ihe ogwo esiku lyolyomaka-ya kOngerki yetu, ongula, 1970 tu pe-ndukile oshituthi shomumvoligolo.

Mugwo memengerki ota dhimbu-lukwa uunona we wa thigile po Osoomi lwotangotango nokuuka ko kiigwana yaAfrika, kOwambo no-kuli. Olye e shi okuyaguma uutoye niikumitha yi li mehitori lyOngerki ndjika ya tegelelwa yi hokololwe mo-shituthi shoka? Oto shi mono wo naampoka sho, manga tuu ku na a-shike oomwedhi 11, tu thike mo me-ligolomumvo, ye kuku Simson Shi-tuua ota hulitha oondjenda, a ye ko kevi lyeuvaneko. Iinima yaKalunga hayo yomuntu. Andola osha li o-shinima shomuntu, andola owa ti tuu aawe, nguka na ka tsakanithe nawa ehistori moshituthi shoka.

"Omimvo otadhi iikweya ko," ngashi omushangi gumwe e shi ti. Omimvo otadhi endebele. Ethele o-li li pokuumba, ihe oshike sha ni-ngwa notashi ningwa sigo ongashi-ngeyi kOngerki ndjoka ya valwa me-ni lyethimbo lya tya ngaaka? Ndi-ka kali shi ashike epulo tali tege-lele eyamukulo mehitori lyoshitu-thi, aawe.

Omukuluntutumwa moshituthi sheyapulo lyaasita ya hugunine o-kwa holola uumbanda we okudhi-ladhila oshilonga shaasitagongalo yo-momimvo tadhi endebele, ihe otadhi faalele wo iinima oyindji. Tashi ti: meendelelo lyethimbo omuna oo-mwenyo odhindji tadhi thigala po itadhi hupithwa. Otu na omiyalu o-minene dhaayapulwa aasita, aaye-vangeliste, aapangi, aalongi naadia-koni momumvo nomumvo. Ihe e-pulo oondi: Omiyalu dhaahupi-thwa momimvo ndhoka ohadhi ka-la dhi thike peni?

EENHOKOLWA DEPANGELONGERKI

1. Epangelongerki la kundana ondaka yoluhodi eumboongalo lomufitaongalo Tomas Shindongo, Oniimwandi, la pya po filufilu: eengulu, eenduda naashishe. Mwa pi-la yo oimaliwa yeongalo nembo lemona leongalo.

Epangelongerki la kundana yo oshiponga shikwao, oluvadi la xwikapo ongulu yoshipangelo sheongalo laNayena eti-4. 1. 1969 onguloshi.

2. Omufitaongalo Eino Amaambo eshi sha pumbiwa yo e likwatakanife noilonga yomaongalo ongerki yetu fimbo ina shuna ketwikilolongo laye kuAmerika, Epangelongerki tali ufa eyakulo laye momaongalo e lili noku lili, li kale meudafano lOmbelewa yongerki novapashukili voitaingerki. Pefimbo olo eongalo lonhu-mba la pumbwa eyakulo lomufita Eino Amaambo.

3. Epangelongerki la lesa ombilive yatatekulu Sem Kaukungwa ta indile a tulwe mopensiune (medimbuko) neudo molweenghono tadi xupipala nouyehame wa fa itau pu po. Epangelongerki la tambula eindilo eli nola ufa yo a pewe ekwafo lomukulupe okuhovela muFebuluali neudo.

4. Ondombwedi yomufita Elia Nghikembua kuMapumulo, tai holola a pita nawa omakonakono aye, ya leshwa nepandulo kEpangelongerki. - Epangelongerki otali mu halele natango etwikilo la punikwa.

5. Eshi Epangelongerki la tokola ku ningwe oshoongalelengerki neudo, le shi ufa shi ka kale ko muJuli 1-4. 1969 kOkahao.

Omumvo gwa zi ko omusamane Jason Amakutuwa okwa li moshigongi shoonkunda-thana dhinima yopasosiale (onkalathano) muAddis Ababa, Etiopia tala ep. 7.

Omuwambo omona wEtumo

Ovana vaNangobe ohava dalwa nee- nghaku, ovana vEtumo otava kulu yo nomhepo yEtumo. Eshi otashi monika nawa komulaina womadina aavo ve li-yandja koshilonga eshi naakwinya yo mOuninginino.

Omuyakupangi Rauha Erastus ou a longa eedula nhe moTshandi, Oukwaluudi, pamwe nomulumenhu waye Naftali Shimhinda ova mona eifano eli lomEtumo, nde divadiva konima yoshivilo shavo osho sha danwa meongalo lavo mEenhana, muOktoba 1968, ova nya-mukula: "Omwene ame ou tume nge," nova ya. Etokolo lavo kala li oshinima shipu. Oshe va pula ekondjo lihapu.

Ashike ova koneka kutya, itava dulu okuhondama eke lOmwene ngenge tali va kwata noku va hoololela oshilonga eshi shidjuu. Paife ove li kUutsathima.

Ovatunda paife ohava ningilwa elo-ngelokalunga Oshoondaha keshe kutate Hofni Nakamhela, nokutambula ekwafo louhaku kumeme Aini Nakamhela, ovo ve li yandja ko pexulilo lomudo wa ya.

Natango tu pexulilo lodula oyo ya dja ko ovalongi ovanyasha vanhe ova koneka ongunga yavo okulonga momapya

Etumo, ovo Olivia Hauuanga, Ndinelago Emvula, Helvi Hamukwaya, Adelheid Namhweya. Ova ninga eindilo lavo kEpangelongerki nola tambulwa. Ovo aveshe otava longo kEtunda-Mindaba.

Omukuluntutumwa omusamane M. Ihamaki okwa li a popitha aasita mboka ya yapulwa ngeyi:

Mokudhiladhila oshilonga sheni ondi na uumbanda. One omwa mono omalunduluko omanene methimbo efupi lyowala. Shika ihashi ningwa (elunduluko tali endebele) unene palwe muuyuni.

Mongundu ndjika omu na aalongwa yandje yaali Hiskia Haufiku naTomas Shivute. Pethimbo ye li mOseminali, oya li ya pewa iilonga ya simana mokati kooyakwawo. Ihe okwa kala wo omaluhepo ogendji.

One ota mu ka kala aasita yethimbo epe aakwanegongalo yeni otaa ka kala ya putuka oondjila ombwanawa odha longwa. Iipangelo oko yi li. Oofabrika otadhi dhikwa. Kalunga na hambelwe omolwaa-yihe mbyoka. Ihe ope na oshiponga shimwe methimbo lya tya ngaaka: Omuntu ota dhiladhila nuupu kutya Omuwa gwandje ota kala ko. Momathimbo ga tya ngaaka Kalunga ota dhimbiwa. Musoomi aantu oyendji oya shuna monima. Noshiponga shomusita gwongashingeyi okwiikongela mbyoka tayi lika po koothithi. Eyakulo lye otali shituka epangelo. Onke one aasita yonena, dhimbulukweni ne yene ne mu dhimbuluthe wo yalwe kutya:

Jesus Kristus ote ya. Omuwa ina sa uunye okugwanitha ando omauvaneko ge.

Otwa fikama neumbo latate Matti Seppälä okuya kOuninginino eti-17. 12. 1968. Otwa ya fiyo okEtoto. Ediladilo letu oleli tu ka talele po ovamwameme ovo ve li ko. Otwe va hanga, nove tu tambula nombili. Efiku tuu olo eshi la toka, otwa ninga owandaha ponhele oyo ve i fimaneka, opo hava ongala shito.

Oku na omushamane Jeremia Tjilumbu oye a fya oshisho shovamwameme ovo ve li ko. Onguloshi otwa ninga oxungi. Vahapu ove uya koxungi, natate Seppälä okwe va lombwela oshilalakanenwa shetu kutya, oshoku va ningila ofikola oule woshivike shimwe, nokudana oshivilo shaKrisimesa pamwe navo.

Otwa fikile ko yo pamwe natate Samuel Mateus, omuevangeliste wokEtunda. Oilonga otwe i topolele nee ngaha:- Ovakulunhu otava longwa oipango kumeme Raili

OMBILI YUUYUNI

Omukulupe kuku Sakeus Iihuhwa okwa fatulula oshilonga shombili ye etwa kuKristus sho kwa popi ngeyi newi lyopombanda: "Kristus oye ombili yetu." Okwa hokolola kutya, mokuputuka kwe ka mone ne ombili yi thike pundjoka ye etwa kevangeli. Ongulangula manga omuntu ta penduka, ye ota kookolola uutati we u kale popepi.

Kuku Iihuhwa okwa hokolola kutya, nonando aantu ya kale ya gongelwa komukwaniilwa gwawo, onkene tu ihaa pitika kehe gumwe a pitwe kumukwawo lwokonima, oshoka natango inaa iinekelathana. Otaa limbililwathana ashike, kuku Iihuhwa a ti ngeyi: Miiututhi iinene yi thike mpa ngashingeyi aantu itaa limbililwathana we nando.

Otaa minikathana ya nyanyukwa, oshoka Oye ombili yetu. Aagundjuka itaa koneke nawa ombili ndjika ya gandjwa kuKalunga muuyuni. Nge u li muKristus, dhimbulukwa kutya, Oye ombili yetu. Noombinga adhihe mbali okwe dhi hanganitha, sho a teya po etondathano.

Kuku Iihuhwa okwa eta pafupi ehokololo lyaNakambale a li a tindwa a tunge mUukwambi, oshoka aniwa Aakwambi otaa ya dhipaga. Kuku Iihuhwa okwa ti kutya, Nakambale okwe ya lombwele ashike ngeyi. Ngoka a tumu ndje Oye ombili yetu. Shika oshiwana sho pokuma pu na ombili, pu negundjilo, onke pwo opala okutungilwa omatsali gatau.

Seppälä, olwiimbo laKrisimesa okutate Mateus, otundimbibeli okutate Seppälä nounona olwiimbo laKrisimesa kuP. Kavungo. Meme Seppälä a ninga yo edeulo lolutu nokulonga oipango, opo konima exulifo.

Otwa ile novapangi vavali, meme Maija Liisa nameme Toini, nelalakanano lokuhakula ovanandu. Oixuna shili, oko oku na natango ovamwameme ve li moupofi woupaani. Osho omafiku aeshe twa ninga eetundi ongula, nokomatango owandaha, onguloshi oxungi. Ova kala tava hapupala mokukala meetundi, osheshi otwa hovelele nounona 16, nde otwa xulifa nounona 21. Melongelokalunga yo vahapu va pwilikina nohokwe, nande okwa kala yo vamwe ve li kokule kanini. Konima yomambo okwa ka ningwa omambo koomwene woshilongo Nakatimba.

Eshakalo loKrisimesa ola ningwa naana ngashi twa ikilila. Ovanhu ova lombwelwa vaha kofe, nongendjo oya dengwa potundi onhine youfiku. Otee oya li ya longekidwa, osho yo omaano amwe e lili, unene kwaava va kala meetundi oshivike ashishe.

Venya ove tu hololela yo eemhubwe davo: Pamwe namwene woshilongo shavo otava ti: Fye otwa hala omulongi, fye otwa hala ompangi. Ove omunyasha owa teelelwa hano mepya lOmwene.



Okangundu kaalungwa Aadhimba mboka ya ningilwa ootundi ku tate namemo Seppälä pethimbo lyaKrisimesa

Manga tu li molwiimbo lwetu ongundu yahamunona hamukuluntu, otu uvu onkugo tayi kugu. Tu yeluthe omeho, otu lwete gwanepuka sho gwa pwipwika po okagumbo komukulupe Helena Shivute. Nokape na we ngo iikwata kiiteta, kehe gumwe okwa li ta monika meni lyoompadhi uuka koshiponga.

Ngoka gwaa na omayego, ihe niitalala ohagu li, otwa adha gwa tukula elenge, manga aantu taa kunkula owala kokule nago nokutala ko keliko lyokombanda yevi nkene tali hulu po momeho gawo. Uuyemele womeya owa li wa fa omahooli sho tau ekelwa momulilo.

Otwa li tatu kakama okutala omukulupe gwoomvula ngiika dhomilongo hetatu sho a kookololelwa pokayale a hupithwa moshiponga oshinene. Shika osha ningwa mUukwaluudhi eti-24. 9. 68.

Esiku lya landula molwiimbo lwetu otwa kundathana natango oluhepo lwegumbo lyomukulupe lwa etwa koshiponga shika. Otwa yi noontu dhomagumbo nokwiindila ehanga lya pya. Iigongelwa yetu oya li oolata ntano netata lyolata yomakunde. Mbika otwe yi mu faalele nokwiimba omaimbilo getu. Kuku Helena manga inaa tseya kutya, otwe mu etele sha, okwe tu hokololele kutya, ye okwiinekela ngoka e li pombanda. Ihe konima sho a lombwelwa kutya, otwe mu etele oshikwiila, okwa lili noku tu minika nohole oyindji.

Egumbo lyaHelena olya li lya pi po thilu, omalutu ashike ga li ga hupu mo inaaga mona oshiponga. One oomeme mwa gandjele kaaheheli, Omuwa Kalunga ne mu yambekele omagano geni neyakulo lyeni mwe li ningile uunona, Mt. 25: 35. *Eva-Maria Mateus*

Elelo lyOwambo

Ongundu yiilyo yu uthwa noyi inekelwa oshilonga shelelo lyOwambo ayihe, Oraata yoshigwana, Volksraad, otayi ka kuutumba eti-10. Feb. mOshakati opo ya tale shono taye ke shi ningila Owambo ngashi yo yene taye shi dhimbulula sha pumbiwa.

Oshigongi shika shotango mondipangela yOwambo shomumvo nguka, otashi ka egululwa komusamane M.C.Botha ngoka a li wo a gandja nokwe egululile oshituthi shelelo lyOwambo omumvo gwa piti. Oshilyo shimwe shomepangelo ndika sha tseyitha ngeyi.

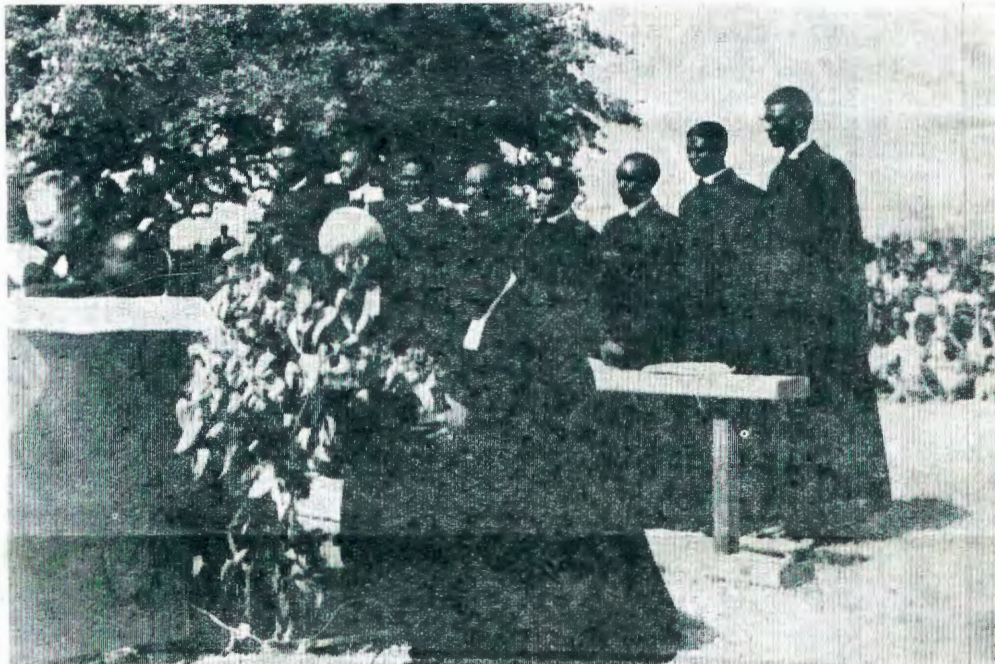
Oshilonga shomusitagongalo

Manga aayapulwa ya thikama powalitali ndjono ya tungilwa pomwiidhi omutalala nombepo yongula tayi pepe natango tayi zi muuzilo, omeho gegongalo oga li taga aadhima koonte dhoshitumbetango, omumbisofi pamwe naayakuli ye oya thikama moshigalikaneno nota lombwele aayapulwa ngeyi:-

Sho tamu yapulwa ngeyi otamu pewa oohapu dhaKalunga dhi kale momakana geni. Otadhi mu yapula. Otamu pewa Ombepo Ondjapuki. Kalunga ote mu zaleke oonkondo, mu kale aakwiita yiita iiyapuki ne mu kale aadhiginini.

Efatululo ndika omumbisofi okwe li ningi sho a lesa otekisti yomuHesekiel ndjoka tayi ti:- Omukeenakalunga nge tandi mu lombwele ongoye u nokusa, na ngoye itoo ti sha, u mu kumagidhile okuyona kwe, nena onguka ota sile okuyona kwe, nombinzi ye otandi yi pula moshikaha shoye 33:7-9

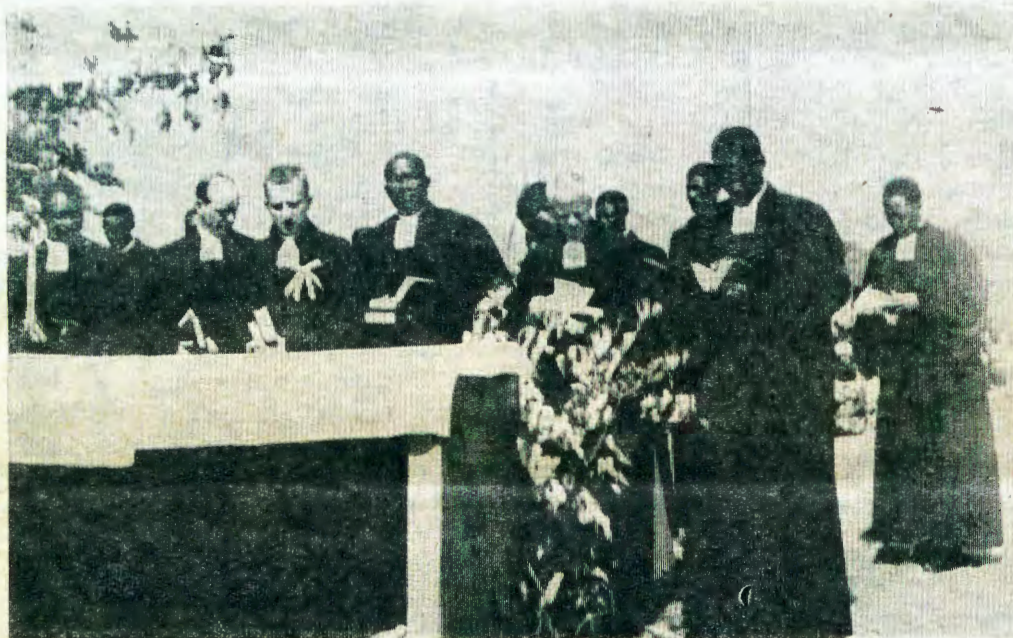
"The otamu pulwa wo sha," Omu-



Aasita aape ya thikama konima yowalitali naayakuli ye li moshigalikaneno.

ka pomathimbo ngoka gopala naangoka gaa opalele.

Ihatu iuvitha otse yene, aawe o-Kristus, tse otatu ulukile aantu ya tale palwe, hakutse. Otatu ya lombwele: Tala onzigona yaKalunga tayi kutha po oondjo dhuuyuni. Kuye oto hupithwa naakweni. Atuhe twa gongalela mpaka egalikaneno lyetu olyo ndika Kalunga e mu sile ohenda noku mu yambeka.



Mefano ndika otamu monika aayakuli ayehe ya thikama moshigalikaneno

mbisofi osho a lombwele aayapulwa. Mboka taa yono noitamu ya pukulula, ombinzi yawo otayi pulwa miikaha yeni. Shika otashi ti kutya, omusita okwa pewa omutenge omudhigu. Opo twaa pulwe ondjo yi thike mpaka, oohapu dhaKalunga nadhi kale momakana getu.

Pamwe shika otashi mu etele nokuli uudhigu. Omukriste kehe okushi shi kutya, uudhigu otau gwedhele uudhigu. Ihe oye ota kondjo. Nangoye wo iidhidhimikila omahepeko ongomukwiita ofule gwaKri-

stus, u monike omudhiginini 2Tim. 2:3 U shi okugandja oohapu dho-shili.

Oondjahi ohadhi ya sho tatu aadhika komaudhigu. One aakwiita yaKristus inamu pangelwa kondjahi ne inamu tamanana- Ihe omumati gwOmuwa ina opala ta tamanana- Ihe e shi okupukulula aanandumbo nombili Kalunga e ya tedhululithe ya tseye oshili. 2Tim. 2:24.

Omumati gwOmumwa ota tegelelwa a kale e na shono aantu yalwe kaye shi na. Uvitha oohapu. Holo-

Paife ovaaluka

Ovatumwa vOngerki yetu ovo va kala pondje yOwambo efimbo lixupi omolwokulesha nokupwilikina eetundi meekursus paife ova alukila keumbo.

Ovalongi vavali Kristofina Kantu naSaara Nehale ova kala eehani 6 muUmtata okulideula moinyolwa yovapofi. Ongerki yOwambokavango oye lipyakidila nokumonena ovapofi aveshe vomOwambo nge tashi dulika, elongo tali va kwafa mokukala mwenyo kwavo, onghe ovanyasha ava vavali ove liyandja va yakule mofikola oyo.

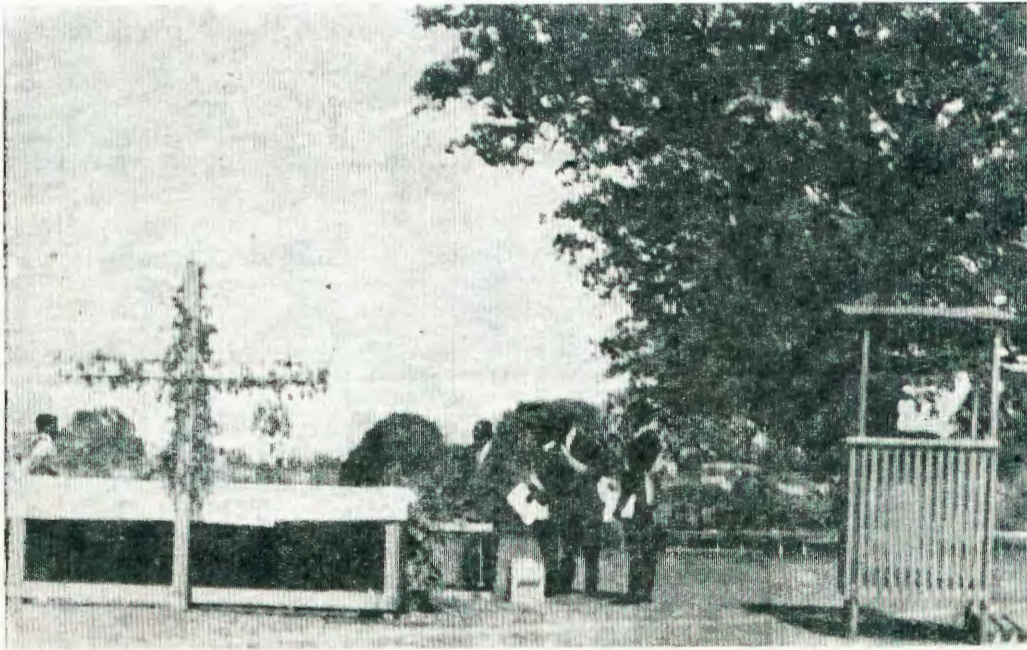
Natango ovalongi vavali Abednego Nghifikua naLiina Mpanda ova kala ohani imwe omudo waya muJohannesburg nokupwilikina elongo loileshwa younona. Kwinya inava kala ashike ovapwilikini nde ova kuma yo nomake avo koilongwa oyo. "Shiimba kape na oshilonga oshidjuu sha fa osho shokumonena onunona oileshomwa," osho tate Nghifikua a tonga mowaaluka kwaye.

Ohatu teeleele omapuniko mahapu mOngerki yetu omolwomayakulo aava aveshe.

EZIMO LYAASITA TALI TANA

OMIMVO NGAPI DHA PITI PO

“Sha tiligana omukunde gwiimi, omuzimo gwa tana, okantu ke ya ko,” osha tiwa komutonatelishitayingerki shUuninginino, omusamane Jason Amakutuwa, ongeluku kwaamboka ya yapulilwa moshilonga shuusitango ngalo mesiku eti-8-12-1968 moNakayale.



Melalekathano lyoshituthi omutonatelishitayi Amakutuwa okwa lombwele aayapulwa. Omwa mana oskola yokOtjimbingwe, ihe omwa tameke wo onkwawo ngashingeyi.

Otashi vulika yamwe tamu ka kala nawa, ihe yamwe tamu ka kala mwa tondika. Yamwe otamu ka longa aluhe ngashi Karpus ngoka a longo oomvula 85, ihe yamwe otamu ka longa ethimbo efupi lyowala, Omutonatelishitayi a ti ngawo. Omusamane Amakutuwa okwa tsikile ta ti, Petrus okwa pu-

lile Jesus, Johannes nkene ta ningwa, ihe Jesus okwe mu yamukula:

Nge nda hala a kale sigo otandi ya ou na shike nasho? Joh. 12: 22.

Kaayapulwa tate Amakutuwa okwa kumagidha kutya: Taamba momwenyo gwoye eha we li pewa u longe mo, oshoka Kristus ote ya. Omutonatelishitayi ina dhimbwa wo okupandula Epangelongerki lya simana sho lya taamba nokuzimina eyindilo lyOshitayingerki shomUuninginino shi pewe aasita aape.

Omimvo omulongo dha piti po e-shasho lyotango sho lya ningwa mEtunda, moka mwashashelwa Aantu yahetatu. Eshasho ndika lyotango moshigwana shAadhimba nAandongona, olya ningwa momumvo 1959. Shika osha li oshikumithi noka kwa li shi uvitike kaakalimo yomEtunda.

Oya li ye shi uudhano wowala, onkee aashashwa mbaka ya talika omagoya noya li ya dhinika kAatunda, ihe nando ongaaka oonkondo dhoohapu dhaKalunga odha kondjo sigo dha sindi uupaagani Aadhimba nAandongona niimenka yawo.

Ngashingeyi mpeyaka opu na aakriste yethike 145. Eeno, aantu oye ndji ya ningi aalongwa yaKristus. Eeno nani oonkondo dhoohapu dhaKalunga oonene shili. Omuwa Jesus okwa kongo oonzi dhe sigo e dhi mono.

Tse otwa kala nomusimanekwa ngoka a kondjo nokuuvitha oohapu dhaKalunga ngoka e mu tuma, oye tate SOINI NUUYOMA, negumbo lye. Na momumvo 1966 twa pewa tate SAMUEL MATEUS.

Na petameko lyomuvo 1968, twa pewa omulongi omusimanekwa oye meme SELMA GWEENDAMA. Eeno, oonkondo dhoohapu dhaKalunga odha sindi.

*Raimo S. Nangenda,
Standard-Bank*

*WINDHOEK,
(OMUNDONGONA)*



Mefano pombanda owalitali tayi monika noshuuvithilo kolulyo. Mundika pevi ongundu yaasita

Omushamane Stefanus Wedeinge Paulus Shinana, ou haku tiwa Stephen W. Paulus, ou a shanga okambo "Epukululo lOvawambo," okwa fya eti-5. 10. 68.

Stefanus okwa dalwa 23/11/1922 nokwa shashwa 12. 2. 1923 oye omwaina womufitaongalo Natanael Shinana mEngela. Okwa putuka meumbo laxe okamati okaduliki unene. Okwa li e hole oukaume. Okwa kulunhu vaye ova kala ve mu hole unene. Momudo 1939 xe okwa li a hala oku mu tuma kofikola yovamati kOngwediva, ndele Stefanus ka kwa li a hala ko nawa.

Okwa li a hala ngeno a kongelwe kuxe oikutu iwa, omolwaashi okwa ya mOushimba. Okwa kala ha i ngaho mOushimba fiyo 1944 omo a hanga xe a fya. Diva okwa hovele mofikola mOdibo, omo a kala ha hongwa, ye hai mangha kOushimba, fiyo 1955 omo a pita mofikola youhong, nde ta nangekwa moshilonga shouhong pOdibo. Okwa kala po ashike efimbo lixupi, nokwa tumwa vali kEpinga koushilo wEenhana, pe na ongerki yaAnglikani. Opo okwa ningwa omuhongi woukriste, osheshi penya okwa lundulukila mongerki yaAnglikani, nokwa kala yo omuhongi wostanda 111.

Okwa longa neenghono mOngerki ei ndele aveshe ova li va pandula oilonga yaye. Okwa li e hole oukaume novanailongo, ngaashi ye mwene okwa li ha popi omalaka shimba e fike pu 5, ovalaule vomuAfrika ovo a kala ha shakene navo. Okwa kala e hole yo ovashamane ovakulupe novakulukadi venya ve li meenduda. Luhapu e va kalela omutumba ta pulapula oinima yonale. Oha pula yo omikalo doshilongo kutya, omolwashike haku tiwa onhumba nongadi. Oha pula yo oitya ikulu nomadina oshiwana. Okwa shanga "Epukululo lOvawambo." Embo limwe lomahapu oshilongo nomishe yOshikwanyama, eembapila oda kana. Okwa hovelulula vali limwe ndele efyo inali shi itavela vali, okwe li fiya oshikava shi li pehovelolela.

Stefanus oye omufi omutitatu movamwaina va dalelwe 10, nokwa fiya po ounona vaye 10 nomukulukadi. Osho omupiya womwene a ya ketulumuko, nomongula ile nena ofye naave.

Omulongi gwoskola yuusita kOjimbiringwe omusamane Rudolf Wessler okwa mwene wo ompito yokukala moshituthi sheyapulo noku eta omakundo peha lyaalongi ooyakwawo mboka inaa mona ompito yokuthika, nopeha wo lyEpangelongerki lyomUushimba, okwa ti ngeyi:

Aalongi ayehe otaa gandja omakundo. Otandi eta wo omakundo gEpangelongerki lyomUushimba. O-



Omusamane P.W. Shinana

NAYO WO OTAA YI KUDUITSLAND

Ehwamo lyokutseya nawa iihikomwa ndyoka lya holoka nomOngerki yetu, olya kala wo oshiyimati shimwe shelongelokumwe lyoongerki ndhika mbali, yOwambokavango noyomUushimba.

Lumwe aluke aahikimankuma yongerki yomUushimba sho ye endele omahala gamwe gomOwambo, nokuhika omankuma ngaka, omulilo nogwa hwama mbala maagundjuka yetu. Methimbo efupi lyowala aagundjuka yatatu ya yi ya ka dheulwe mOkahandja pamwe naagundjuka yomUushimba.

Ngashingeyi opwa kundanwa ongundu ndjika otayi ka hikila ko Aandowishi muEuropa nuumvo. Tomas Uukunde Oniipa, Martha Kuumbili, Ontananga naSisko-Hilma Angula, Olukonda. oyo Aawambokavango taa futilwa olweendo lwawo nihiikomwa ta ye yi pumbwa, kEhanganotumo lyaSoomi taa ka hika pamwe.

Omusamane Schneider, omuwiliki gwetanga ndika Omundowishi okuna ehalo enene eye a dheule Aawambo mOwambo, ihe ina mona natango ombapila yokuya.

Ihe shimpa tu wa mwena u ta!

musamane Wessler manga inaa tsikila okupopya sha okwa lesa manga oteksti yomuMateus 13: 47-50 ndjoka tayi popi oshiyulitho shoohi mefuta, okwa tsikile ta ti:

Okwa kala omikalo odhindji dhokuyuula oohi, ihe Aapalestina oya longitha unene omukalo gwoshiyulitho shoka tashi hilwa. Osho osha taandele kokule mefuta nosha hiliwa komunkulo ngele sha udha. Shika osha pula aanankondo okushi ninga. Oohi osho dha yoololwa ngaaka oombwanawa tadhi iikalekelwa noombwinayi tadhi ethiwa owala pomutenya nokonima tadhi ekelwa meziko sho dha kukuta.

Jesus ina kala ashike pomunkulo gwefuta aawe, okwa kala muuyuni auhe pokati kawo. Mefuta ndika enene, muuyuni Jesus okwa holola ohole onene yaKalunga sho a dhiginina uuyuni (monete) mu na iigwana oyindji, ya kondekwa kohole yaKalunga.

Olwindji ohatu tala omaudhigu kombanda ye.

Omu uvite tuu kutya, omu li moshiyulitho shaKalunga? Osho Wessler a pula aapulakeni ye. Kehe gumwe na kale u uvite kutya, omo e li. Ita kana mo. Ota dhigininwa mo sigo esiku lyepagulo. Oshiyulitho osha tulwa ngashingeyi mefuta, niilonga yaayakuli yegongalo oyo kukwata kongodhi ndjika, ohole yaKalunga. Aalongi oyendji oya pumbiwa moshilonga shika. Aapalestina oya pumbwathana mokulonga iilonga mbika.

Ngele tatu hili kongodhi ndjika natu hilileni kombinga yimwe. Kombinga ndjoka ku na Jesus. Oku li komunkulo. Tse oshilonga shetu oshokuhilila aantu kuye. Jesus okwa ti: oku na omaludhi ogendji goohi. Aantu wo osho ye li. Aantu aanandunge, nomagoya omapeenda naanye. Aayehe oye lile po omaludhi agehe gomuyuni noye li moshiyulitho shaJesus. Oshilonga shetu oshokugongela manga.

Kashi shi oshilonga shetu manga okuninga omayoololo. Jesus ota londodha:— Hane tamu pangula oohi, nohangashingeyi tashi ningwa. *Omesiku lyahugunina.* Aayengeli otaa ka longa oshilonga shika. Iilonga yetu okwe eta aantu montaneho yaKalunga. Shika oshilonga oshiwana ihe oshidhigu wo, notashi pula eidhidhimiko. Omusamane Wessler okwa hulitha ngeyi:—Peweni Ombepo kOmuwa opo tu tule mo oonkondo dhetu okuhilila wo naashinda yetu kuJesus.

ETI O P I A

Evi ndika oli li pombanda kolwiinga lwaAfrika. Oli nolushandja lwoombinemaila 450.000. Oli naantu 22,000 mil., nolyo evi lyoondundu nkoka taku tameke omulonga gwaNiili.

Omvula ohayi loko muFebuluali - Apilili, onene oJuni-6 Septemba, ohayi kala neem'kalata

Etiopia evi lyomOmbimbeli. Olya tseyika muuyuni waakriste naanale. Aantu yamo oyo Aahaamu nAa-sema. Ukriste owa ningi eitaalo lyoshilongo shAayetiopia okuza 330, ano konaanale nokuli. Oya li ye naakesari, Amde, Zion, Kaleb, Zara, Jakob, Theodore, Jahn naManelik I. Omukeesari Haile Selasie okwa lala oshilongo eti-2 lya Novemba 1930. Oye omuti 255 momundjondjomokelo gwaakwaniilwa okuza komu-kwaniilwa omukiintu gwaSaba a yile okupulakena oondunge dhaSalomo.

Etiopia oli na eliko olindji. Okoothiwa taka mene muKafa oko ngaa sha, iikwamapya, iimuna niikwama-gadhi ku pula, oshingoli nduno iihuna.

ADDIS-ABABA-ONSHENO OMPE

Addis Ababa oshilando shi li moshilongo shaShoa. Oshi li pondika yo-shilongo. Oshi na aantu 500,000. Osha li nale koondundu dhaEntoto sha tungilwa ko kuMsnelik I, ndele okwa li a hala a holele Sahle Selasie ngu kwa li a hala ombala yi kale koonkulumbala kuShoa. Omukwaniilwa nguka okwa hili naatiligane ya simaneke Etiopia. Msnelik I okwa landu-lwa komutekulu Lij Iasu. Ihe 1916 okwa kuthwa oshilongo nosha lan-dwa po komufuko omuna gwaMenelik I, edhina lye Zauditu, okwe shi lala pawe nomuthigululi gwasho Ras Safari Makonnen. Zauditu sho a nena ko, nena Ras Safari okwa ningi omukesari eti-2 lyaNovemba 1930 e ta ningi Haile Selasie. Oshilando osha zako. Omo mu na "OTSHO-TO TSHSA AFRIKA" Omiti dhamo uunikanawa wokuElim.

ONGERKI

Ongerki yako onkulunkulu "O-RTODOKS." Oyo ondjamba yi naa-saasari aayamba.

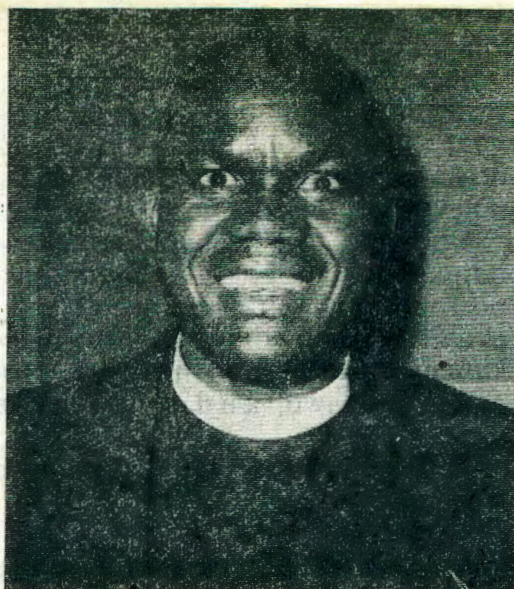
"Maskal." Oshituthi shaMa-skal ohashi dhanwa molwokumo-na omushigakano gwashili. Nando maskal ye mwene ogweti-27 lyaSe-ptemba oshituthi ohashi dhanwa eti-26 lyaSeptemba. Pamithigululwahoko-lolo anuwa omushigakano ogwa monikwa eti-19 lyaMalitsa methete etine. Helena yina yomukesari Kon-stantinus oye a mono omushiga-kano ngoka gwa li gwa alelwa O-muwa Jesus. Nando ongeyi aakriste Aayetiopia oya hogolola Septemba. Oku na ehokololo tali ti omushiga-kano ogwa li nale gwa siikilwa komupagani Persians nde tagu suu-kululwa komukeesari Harcal methete etihamano ngele etiheyali. Harcal okwe gu tula metemba lye lyiita ndee ta sindana. Septemba olyo e-lala lyaTuula ta hulu onke ye gu hogolola. Moshituthi otaa gonyo iihwali notaku tiwa "Demera." Ohayi tsomekwa okuholela omagalika-no gaHelena a li a tema omulilo uuna a ya muJerusalem ndee tagu monika komona e li muKonstanti-nopel. Ehokololo limwe otali ti: Aantu yaHelena yamwe oya tsomeke ehayango koondundu olyo lya monika. Esiku lyaMaskal Demera, aantu ohaa lala okili yo taa nu "Tilla."

Omusaasari omukuluntu Patria-rki nomukeesari, oyo ngaa sha naan-ententu wo yalwe. Omusaasari sho a galikana Demera, ota tsomekwa ehayango lya kambudhuka yo aa-mentu otaa kakuka taa s'onkanka-

la yo taya imbi taa ti: "Eyoha Ab-babaye, Meskerem Tebaye" ndo-ngo otaku shi. Ongerki onene oyo Trinity Cathedral. Oyi na olugu-mbo lwotango nosho tuu. Ehale lyaa-saasari, lyaalumentu, lyaakiintu naa-nona. Melongelokalunga ohaa ga-likana aayapuki, ngu ti imbi, ngu ta galikana, ngu ta thipi pomafano ngu ta lesa.

ONGERKI ONKWA EVA-NGELIMU ETI OPIA MEKANE YESUS

"Mekane Yesus" otashi ti, ehala lyokukala kwaJesus. Olya hogolo-lwa komusitagongalo Kes Badima Yalaw gwomuAddis Ababa. Ooper-



Natango Epangelongerki lya tokola Amakutuwa a ye koshigongi shokangu-ndu ketumo lyomuuyuni auhe ta-shi ka gongala 14 - 26 Apilili 1969 muEtiopia peha lyomumbisofi.

senda 85 dhaakwaLuther odhi li muMekane Yesus Church. Aahongi Aasvedeni oye ya muMassawa 1866 ya longe muumbugantu wEtiopia ya tula muEriturea noyu uvitha Eva-negeli. aAndowishi Aahermansburg ye ya 1927 noye na aakwanegonga-lo 55,000. Ompangongerki ya ku-ndathanwa tango 1958 muAddis A-baba kaahongi naapeha yomago-ngalo. MuApilili okangundulonge-kidho ka ii ka mana noshigongi-ngerki sha li sha gongala muJanuali omumvo 1959. Aakwanegongalo ya zi kuSidamo, Gomu Gofa, Wollega, Shoa, Wollo na Tigre ye ya koshi-gongongerki. Ongerki ya lukwa THE ETHIOPIAN EVANGELICAL CHURCH MEKANE JESUS. Ongerki oyi na itayingengerki ine oyo:

1. Oshitayingengerki shomuumbugantu waWollega.
2. --,-- shaShoa nuuzio wa-Wollega.
3. --,-- shomuumbugantu.
4. --,-- shaWollo naTigre.

Ongerki ya zi momatumo ngaka:

Norwegia	1948.
Sweden	1866.
Hermansburg	1927.
Amerika	1957.

Aakriste 1968 oye li po ngeyi:

Aakwanegongalo	57,000.
Aakolekwa	20,000.
Aasitagongalo	67.
Omagongalo	350.
Iipangelo	7.
Uupangelo	18.

UUKWATYA WONGERKI:

Oshigongongerki ohashi gongala o-mumvo omutiyali. Epangelongerki ohali gongala muJanuali naJuni.

1. Presidende
2. Omupeha gwe
3. Omudhiginini gwiiniwe
4. Amushanga
5. Omupeha gwe

muGuenet Hotel
Room 78

Addis Ababa, 18 Novemba 1968

Jason Amakutuwa

ONTANDA

Tse aagundjuka Aashigambo otwa yungile ontanda yetu 15-17. 11. 68, pOnzinzi mOshigambo.

Shaangoka okwa yile pamukalo gwe mwene, ngele kolupadhi. Twa tameke okugongala komatango sigo ongulohi yEtitano 15. 11. 68. Oohiya dhontanda dha longithwa nokupukulula aantu.

Mokwoopaleka omahala ngaashi elugo, oshinyanga shohungi nomahala gokulala aakadhona ya gwini aamati meopaleko. Ontanda nando ya ithana kehe omugundjuka mOshigambo, mboka ya li ko oye thike owala 22. "Oyendji oyi ithanwa ihe aashona yowala ya hogololwa.

Ha oonyama nenge ootee twa lile ando, aawe, ihe oondhimbo dha-Mwadhina pamwe "nonamba faife" (ekaka).

Elalakano lyontanda olya li ndi: Tu ilonge notu kundathane iinima yopalutu noyopamwenyo pamwe megundjilo. Tse tu tseyathane wo iipala niipala nomoonkalelo wo.

Omugundjukasita gwetu tate S.Ela-goe tu kwatha wo nenyanyu miipo-

NATSE WO OKO TWA LI

Aalongwa 19, yostanda VI pamwe naalongi 9 yoskola yopOkahao, oya thikama eti-2. 11. 68 oku ka tala egwo lyomulonga gwaKunene.

Oshitewo shimwe ota shi ti: "Nge wa hala okutala, pitila mUukwaluudhi, Uukolonkadhi nEunda, nde sigo omEtunda." Natse wo osho twa ningi. PuTshandi otwa kutha po ondoloma yomeya. Pomulonga otwa thiki po naanaa etata lyontihamano komatango. Otwa tala ngaa kashona kowala notwa ka pewa ihe onguta yoomposi. Esiku ndyoka olya li oshituthi oshinene shoome. Odha li dhe tu talitha nawa.

Esiku lya landula otwa thiki pegwo lyolyene mpoka twa tala iikumitha yeshito lyaKalunga. Nguka ino enda po, ku mono we sha. Ootundi adhihe twa kala mpeyaka otwa kala tu nohokwe onene okutala eshito ndiyaka.

Omulongelo gwetu ogwa li oondjimbo ndhoka twe dhi gandja kwa-ayehe mboka twa tsakanene nayo. Mokugaluka otwa pitile poRwacana, nokutalela po aamwameme oyendji ye li po, noku ya pa mo momulongelo gwetu, manga yo taye tu yakula palutu. Yaloo, aakwetu, Tate Kalunga ne mu yambekele omaya-

piwa yetu. Naampoka oshigongi ashihe sha nyengwa okumona oonzapo dha yela okwe tu tsu omukumo sho a ti: "Okutseya kwetu okombinga, ihe esiku ndiyaka otatu ka kala twa tseya ayihe.

Otwa hokwa noonkondo ootundi mbiimbeli niipopiwa yilwe wo. Kuumeme gumwe okwe tu kwatha shili sho a eta oshilonga shuundiakoni mokati kaagundjuka. Osha eta shili efano lya yela okulongela Kristus muugundjuka.

Twa li wo niipopiwa yimwe ngaa-shi okulongitha ewi "Sosiale lewe," nosho wo okwiihupitha. Otwa tseyeni kutya; tate, meme, omumati, omukadhona nenge okanona, oya pumbwa okwiihupitha. Epulo oli li mpa. Oto ihupitha ngiini? Oto imonene ngiini oshithima shesiku kehe: iikulya, omizalo egumbo, iimaliwa, okuume n.sh.t. Ano okwi imonena mbika oyo okwiihupitha kwambanda yevi.

Oto hupu tuu nuupu? Dhimbulukwa kutya, owa pumbwa okwiihupitha mwene omusamane, omukulukadhi, omumati nomukadhona. Oho ihupitha ano ngiini mOwambo yeni muno?

Sho uugundjuka itaa kalelele, otwa li wo niipopiwa mbika: oondjokana nuunegumbo. Aapopi sho ya popi, omapulo ga holoka noga yamukulwa wo nawa.

Ite dhimbwa nuupu ombili, endjango neuvathano sho ya pangele ontanda yetu. Kakele kiikuni, omeya twe ga mono ngaa nokaudhigu kashona. Montanda otwa mwene ayenda oyendji omutenya noongulohi okupulakena.

Twa nyanyukwa noonkondo sho twa hulitha ontanda yetu mOsoondaha nelongelokalunga pamwe naantu oyendji yomomikunda dhaampyaka.

Nonando twa lalekathana, aagundjuka inatu topoka noinatu thiga po ontanda yetu nuupu. Oyendji oya ti: "Ando okwa li tatu halakaneni ongula ando hwepo." Nonando ongawo, ando ihayi udha okagandhi.

Jason Namupala

kulo mwe ge tu ningile. Ogo kage shi osima, omOmuwa. Konima yomasiku otwa galukile ishewe poskola yetu megameno ewanawa. Megameno lyaKalunga kamu na iiponga.

S. Mb. Kaulu

Ohatu hangweni tuu oupafi?

Ovakwetu ovaholike muJesus Kristus ofyeni ava tu li mounyuni wopaife ounyuni mudju shili, pamha, eshi ohatu mono eekamba nghe diyadi mounyuni aushe hai hale okutya, kape na apa pehe na okamba oixuna shili.

Paimhe ovanhu ava ve li opo oi, ihava dimbulukwa vali Kalunga, aaye. Omunhu ota nu nde ta nhuka ye ta dana, vamwe tava kuwilile, oixuna i li po. Ngenge wa ende pokamba nokuli mOshondaha, oto kumwa ashike eshi pokamba peyadi tuu ndo, ounona ku pula ovakulunhu oixuna.

Paife ounona novakulunhu ava va li poundingosho vopopepi ova ya nee keekamba dokokule ounona tava fii po ooxe nooina tava i neekamba, ovakulunhu tava fii po omaumbo avo. Ongghenda inene shili. Onghe naame paamha ohai ti ovakwetu ava tu li momaumbo twiindileni neenghono inatu lolokeni.

Elise Shuudifonya

Aanaskola mboka ya nyolele ekonakono lyoJuniolo 1968 mOshigambo nOnguediva, otaku ti: AYEHE OYAPITA NAWA

OMUKWETU

Oshifo shOngerki onkwaevangeli paLuther yomOwambokavango Die Tydskrif van die Evangeliese Lutherse Ovambokavangokerk Oha zi mOniipa.

Omukuluntu gwoshifo/ Hoofredakteur omumbisofi

Dr. Leonard Auala,

Amushanga/ redakteur S. Ekandjo

Ondando komumvo mOwambo 70c

kUushimba nOkavango 90c

Kombanda yomafuta R1.30.

Oondando nomambestelo naga tumwe kOmukwetu,

Oniipa, Pk. Ondangwa, S. W. A.

Oshinyolwa shuule

wondeimi 1	otashi futilwa	R1.00
oondeimi 2	" "	R1.90
oondeimi 3	" "	R2.70
oondeimi 4	" "	R3.40
oondeimi 5	" "	R5.00

Oto vulu okutuma efano lyaashoka wa hala shi tseyithwe nomatumbulo wo gasha ngele ope na.

The Finnish Mission Press
Oniipa P. O. Ondangua