

OMUKWETU



OSHIFO SHIKA OSHO OSHIHOLELWA SHOLUPE LWA DHILADHILILWA OMUKWETU 1969

OKOTOBA 1968

No 19

OSHI NA UUTUMBI WASHIKE

Pethimbo ndika omuntu a fa ta tala kutya, kape na mbudhi unene shampa tali piti lyo tali yimo osha gwana nando ke na iilonga yasha niinakugwanithwa yesiku kehe. Shika otashi holoka unene ngele to ende pomahala ngoka haga gongala oyendji, nena oto adha naanaa omugundjuka nenge omukuluntu gwanasho a ninga ombwiti yomelundu. Ke na sho ha longo ye ke na wo sho ha gwini muumbwiti we mbo. Mpaka itatu dhiladhila mboka taa ngeshefa, aawe, ongoye tuu.

Aakwetu ne Aawambokavango, oshigwana otashi mono tuu uutumbi washa ngele itashi dhiginine iilonga nokwiihepeka omolwasho nomolwomalualo gasho gongashingeyi nogokomeho? Mokweendagula koombinga noombinga pwa na elalakano lyasha, otashi holola tuu nokusimanekitha omwenyo gwoshigwana? -Aawe-ndishi. Shila otashi thindile owala omwenyo noonkondo dhoshigwana meshunduko.

Ngashingeyi omadhiladhilo gokupewa eipangelo lyoshigwana sho taga inyenge mombepo yehumokomeho, oshinakugwanithwa shoye monkatu ndjono oshini? Uuwawalali, uunkolwe, uufuthi, uumbudhi nokwaainekelathana, uumbwiti womehenene itaau gwini sha nowaa na elalakano lyasha? Ayihe mbyoka oyo eishundulo lyoye nolyoshigwana shoye wo, onkene yi thigapo ino ya nayo mehumokomeho.

Shoka tashi tungu osho okukala omudhiginini miilonga, muukriste meitaalo nokukala pantu. Etha ano omadhiladhilo agehe omiinayi taga fulukitha omutima gwoye ogomadhigo nuutondwe okutonda omukweni a shitwa ondjelo yaKalunga nokwa kulilithwa ombinzi yOmwana omuholike.

SWAZILAND MUV.V.O.

Swaziland, edu olo opo la mono elipangelo paife ole lishangifa moushilyo moV.V.O. Kumwe nomaduiyo muV.V.O. Swaziland ola ninga oshilyo oshiti 125. Samuel Sukati, omukalelipo waSwaziland muAmerika, oye a yandja eindilo loushilyo la nyolwa kuhamushanga waV.V.O omushamane U Thant.

EENHOKOLWA DEPANGELONGERKI

1
Efaneko omudiakoni Maria Kaveto a kale omatrone moSekundofikola poRuntu omolu ovalongwa vongerki yetu la kolekwa kEpangelongerki.

2
Epangelongerki la tokola ovalongwafita Absalom Hasheela a ye ketwiki-lofikola kuMapumulo naHeikki Uushona kuTurffloop, Tvl.

3
Epangelongerki la tambula nepandulo eindilo lomulongi Eunike Shanghala, Ombalantu okulonga oshilonga shoulongi metumo kOmindamba 1969.

4
Epangelongerki la lesa nepandulo ombilive yovanashilongatumo ya dja moshongalele shavo mEngela omolu omaudjuu momapyatumo. Epangelongerki tali kumaida ovakriste va diinine oukriste wavo hakulifukika vali pashipaani.

5
Epangelongerki tali indile ovafitaongalo novalidiliki va kendambale okuyelifila ovakriste ouwa noukoshoki welidiliko loikolwifa. Notali dimbulukifa kutya, okukondjifa oukolwe noikunwa osho oshilonga shongerki aishe noshomukriste keshe mokukondjela oukriste nouwa woshiwana.

6
Epito mekonakono lelaka lovatumwa tava landula la kundanwa nepandulo kEpangelongerki: mOshikwanyama: Maija-Liisa Niinimäki naViivi Wilde. MoRukwangali: Raili Toivanen naLea Kolehmainen.

ONTANDA YUUKADHONAGONGALO MONDONGA

Uukadhonagongalo womomagongalo omulongo gomOndonga owa li wa thiki kOnguma komatango gesiku eti- 9 lyAuguste 1968.

Potundi onti-9. otwa gongala montandangerki yetu notwa kundwa komudiakoni Aili Abisalom nohapu dhi li mEpsalmi 144:12. Omusitagongalo gwaagundjuka tate T.Ngula nomweevangeliste gwaagundjuka tate A. Kalumbu e tu kundu wo. Konima twa leshelwa omauthompango gomontanda.

Metata lyohetatu esiku lya landula twa yi kokapale. Hwiya twa ningithwa omainyengo gi ili nogi ili komulongi Hilma Nyamu naMagdalena Mateus.

Konima yowandaha twa tsikile nomathigathano gokwiimba komuntu gumwe awike nokulesha. Omolwa uwindji waanona otwa hokololitha nokwiimbitha aanona yaali ayeke megongalo kehe. Egongalo lyokOntananga olyo lya li lya talika esindani moka mwa li omunona ngoka imbi nawa e vule yakwawo ayehe.

Pomutenya twa tsikile nomathigathano ngaka okunuka uule womundjomboko, okudhenga etanga nokumatuka. Miinima ayihe mbika kakele okudhenga etanga, omunona kehe okwa li a mono ompito. Moku dhenga etanga aadhani yokOntananga oya li ya sindana. Mokunuka omundjomboko egongalo lyaNiipa

olya sindana. Mokumatuka aanona yaali Aashigambo oya sindi omagongalo agehe sho ya li ya matuka oosekonde 90 adhike.

Ongulohi otwa li twa hungile nokupulakena ookuoro nomahokololo. Mpaka ka twa li twa tala aasindani ihe otwa hungile ashike pamwe nokunyanyukwa.

Ongula onene yesiku lya landula, Osondaha, twa ningilwa otundimbimbeli kutate M. Ngipandulwa Ene-nedhiladhilo lye lya li:- Kehe gumwe omunene nenge omushona oye ota vulu okulongithwa kuKalunga. A gandja oshiholelwa shaSamuel Sam. 3. Nando a li okamati a pewa nokuli oohapu oonkunkutu e dhi faalele omusaseri Eli, Sam.3:11-14,18-19.

Potundi 10, twa hiti melongelokalunga lya ningwa kutate Ngula. Pehulilo lyelongelokalunga pwa gandjwa omapandulo kaayakuli yetu naasindani ya pewa ondjambi.

Kaafilippi 3:14 Paulus ota ti: "O-tandi matukile kethikilo okondjambi yesindano." Aanona oya li ya matukile kondjambi yesindano lyomuyuni mbuka ihe momayimbilo ye ga imbi nomomahokololo ye ga hokolola ya fa yu ulike wo kutya, otaa matukile kondjambi yesindano taye ke yi pewa megulu.

*Frieda J.N.Niinkoti
naHilma Nyamu*

OMWENE OTE UYA, OPENI TO HANGWA?

Luk.12:42-48.

Otekisti ei oi nepulo tali yukilile kwaame nokwoove, ile kukeshe tu ou a pewa oshilonga kOmwene. O- la pulwa shashi Omwene ote uya.

Olyelye omumati ou a lungama? Omwene waye ta hange eemwenyo da li da puka, ndele oda pukululwa, eemwenyo da vela nde da velulwa? Eemwenyo da kana nde oda kongwa? Noinima aishe meongalo ya longekidwa nawa?

Olyelye omumati ou eumbo laye la pashukilwa nawa, hali leshelwa eendjovo daKalunga ongula nonguloshi?

Olyelye omumati ou Omwene te mu hange a shakenifa oinakuwanifwa yaye, oiyandjiwa yomudo ya pwa kufutwa, nde ke nongunga yasha keongalo?

Olyelye ou, okukalamwenyo kwa- ye kwa pashukilwa nawa? E li omwiindili nomuliyandji kuJesus? E li omwiindili nomwiilikaneni woi longa yongerki?

Otwa lesa, omumati a tya, nga- ha oye omunelao, osheshi Omwe- ne waye eshi te uya, ote mu pe oukulunhu wafimana woinima ya- ye aishe.

Ndelene olyelye omumati ou mu shima? Oye tu ou ta hangika kO- mwene ina wanifa sha. Ovapuki novaveli keemwenyo nst inava pu- kululwa noinava hakulwa, ovakani inava kongwa. Eandaha momau- mbo ihadi ningwa vali, eengudu- mbibeli momikunda oda fya. Ee- ngunga doiyandjiwa yomido eendu- ba. Ouhasha oo wa ninga omudja- lo waye.

Ndele unene oshiponga osha li okunwa nokukulwa. Ehangano: 638:3-4.

Omukwetu natu lipule nghe tu li nehalo lOmwene.

Osheshi Omwene okwe tu shiivi- fa ehalo laye tu li landule.

Josua Hanjango

EPUKULULO

Ngele to nyolele kOmukwetu no- wa hala ombilive yoye yi yamuku- lwe, ino nyola edhina lyanima u mu shi ha longo mOshinyanyangi- dho nenge mOmbelewa yOmukwetu. Kombanda yompunda nyola ko a- shike ngeyi: OMUKWETU, ONII- PA, Pk. ONDANGWA, S.W.A. Tu nyoleni wo oondanda dha tonata nawa dhi shi okuleshwa, ee!

EENGHUNDANA DA DJA KUPAULINUM

MuPaulinum otamu piti ovaho- ngwafita 18 neudo Ovaho- ngwa 9 ovOngerki Onghwaevangeli paLuther mOushimba novahongwa 9 ovOngerki Onghwaevangeli paLu- ther yomOwambokavango. Ovaho- ngwa ava aveshe ova hovela oku- nyola omakonakono avo pehovelo laSeptemba. Eshi va mana oma- konakono, opo ne ovahongwa vO- ngerki yOwambokavango ove u- ya kOwambo okukonakonwa kE- pangelongerki. Epangelongerki nge le va konakona, nole va tala ve shi okukala ovafita, nena tava ka ya- pulilwa oshilonga shoufitaongalo eti- 13 Okotoba kOnakayale.

OVAKAINHU OVAWAMBO TAVE LIHONGO

Odula ei muPaulinum otwa ta- mbula Ovahongwa 18 vape. Mova- hongwa ava omu na 10 ovo va dja mOngerki yOwambokavango. Mo- vahongwa ovo omu na oukadona- longi vavali; Ovawambo: Wilhelmi- na Amweelo naHilma Shilonga, ova hovela okulesha neudo outeologi. Oshinima eshi osho oshikwahistoli. Ehistoli lovakainhu mekwatafano nouteologi mombinga ei yaAfrika yetu la hovela modula ei. Ehalo lavo lokulihonga otali tu pe eline- kelo liwa kutya, novakainhu Ovawa- mbo otava dulu nani okulesha-ko- nakona oukalunga. Ohandi pandula eshi Ongerki yetu tai kedabala oku- yambula onghatu yovakainhu moi- wana yetu.

POIKOLAINEN TE YA KOWAMBO

Omudosente muPaulinum, omu- hongu Urho Poikolainen (Mutyoty) pamwe neumbo laye, ote ke uya pamwe novalongwafita Ovawambo ava tava piti neudo, opo a hovele vali oshilonga shiwa tashi pumbiwa mOngerki yetu nomoshiwana shetu, okufila oshisho ovapofi, - okudika ofikola yovapofi mOngwediva. Oi- longa yatya ngaha oi shi okufima- nekwa shili kufyeni, osheshi otai etele ovapofi omapuniko mahapu. Otava ka kuma edina laJesus no- minwe davo. (-Eshi nda li muSoo- mi, onde shi kuminwa luhapu oku- tala ovapofi tava shiki okahumba (piano), tava lesa, tava imbi no- hava tungile etumo oikuku tai la- ndifwa po noimaliwa tai tumwa metumo. Ndi tye oshilonga shetumo otashi longwa nokovapofi vomu- Soomi. Nokuli ovo tuu va diinina

ediladilo eli, ovapofi vetweni va ongelwe nde va kwafwe nokulo- ngwa). Hano inamu keelelela ova- pofi kuKristus.

Omuhongi Urho Poikolainen o- kwa li ta wapalele oshilonga sho- kutekulila ongerki yetu ovafita. Oye omufita e na omashiivo mawa ko- mbinga yoshilonga shoufitaongalo. Eshi a li muSoomi, okwa li omufi- tamuwiliki. A kala yo nale mu- S.W.A. nokwa shiiva nawa Ovawa- mbo nongerki yetu. -Omaudifo aye luhapu muPaulinum a kala ngoma- hungimwenyo kufye, e yadi evangeli.

Efola Poikolainen a kala omu- hongu wovalikadi vovahongwafita muPaulinum. E va honga okudii- nina omaumbo-okuwapaleka, oku- kosha, okuteleka noikwashikelele vali. -Oku va kanifa muPaulinum, otwa kanifa shihapu. Kalunga na punike oshilonga shavo shipe, shi tunge ongerki yaKristus.

OIIMATI YOSHILONGATUMO

Natango mongudu ei, omu na omunghwaingwai, omumati Tobias Shiuana. Oye wotete womovanghwa- ingwai e uya okulesha outeologi (oukalunga). Oye okwa dja mouni- nginino wOwambo, omo ongerki yetu tai longo oilonga yeudifo lE- vangeli, mokati kovapaani. Nani oshilonga shetumo shongerki yetu, kashi fi ongaho mOmwene. Oshilo- nga sha eta oimati. Oshiiimati shi- mwe, Tobias oyou e li oku kofikola ei yakula muS.W.A. Tu mu indi- lileni, opo a pewe eenghono dO- mhupo Iyapuki ndele a ka kale ou- yelele waKristus nomoiwana inya yovapaani.

TAVA KA MONA B.A.

Otu na natango ovahongwa va pita nale omattika, Ovawambo va- vali: Matti Amadhila na Elia Nii- nkoti, tave lihonge onghatu B.A. meenhumwafo mekwatafano nofi- kola yokombada yaPretoria. Ohava kwafelwa yo meewino keedosente daPaulinum. Hatu lineekele kutya, Matti Amadhila ta ka hanga odi- mbu yaye modula tai uya nokumona onghatu yaye.

Onye ovakwaita ovaholike va Kristus, ngenge mwa uda ndumbi eshi tu li po, ladipaleni moku tu ilikanena. Ohatu kala tu nomuku- mo nge hatu longo yo tu li mo- ndobe yomailikaneno eni.

*Eenghundana edi oda ongelwa ku
Abisai Shejavali*

Omukwetu gwomvula tayi ya otaka kala e na omalunduluko gamwe ngaashi omatseyitho taga landula mpa:

a) Ebandja lyotango mOmukwetu otali ka longithwa ongepeko tali siikile oontumba dhoka dhi li meni lyoshifo shoshene. Mepandja olyo tuu ndyoka otamu ka kala aluhe efano li li moombapa mbali, onkee oshifo shika osho oshiholelwa shoka tashi ulike naanaa olupe moka Omukwetu e na oku kala ta holo-ka okutameka Januari 1969.

b) Omolwomaopaleko ngoka, okwa dhiladhilwa wo kutya, ondando yOmukwetu momumvo tagu ya yi gwedhelwe noosende 10, ano mOwambo Omukwetu gwomumvo tagu ya ta landwa 70c kUushimba nOkavango 90c palwe R1.30c.

c) Ngashingeyi ombelewa yopoosa sho ya huma komeho mokuthikitha opoosa kooyene yadho, otatu ku tsu omayele omuleshi nomumbesteli gwoshifo omusimanekwa, u dhiladhile wo ompito ndjoka yokulongitha ombelewa yopoosa; ano opo oshifo shoye shi thike kuyeke kungoye, onawa ngele tashi kala hashi endeke mombelewa yopoosa.

Ngoka a hala shi endeke kombelewa yopoosa oku na okufuta 90c omolwostombe.

b) Omuleshi omusimanekwa, tatu ku dhimbulutha ishewe u inyolithe manga kuyeke. Ino tegelela ethimbo sho lya pwa po ngoye opo nduno u kuthe Ndimba moombwa; oto a dha a lika po. Tuma ano edhina lyoye pamwe noosende 70 nenge 90 omolwOmukwetu gwomvula tayi ya.

e) Omukwetu oye oshifo shomukriste kehe gwOngerki onkwaevangeligi paLuther yOwambokavango moka ngoye wo u li oshilyo. Onkene omukriste kehe ota tegelelwa a kale ha lesa oshifo. Osho wo omukriste kehe oku na uuthemba okunyola sha mOmukwetu. Olwindji aantu yamwe oya fa haa dhiladhila kutya, oshifo shika oshaasita, aalongi, aayevangeliste, aapangi, aakuluntugongalo nayalwe ya fa mboka. Aawe, oshifo oshoye wo ngoye ngoka waaheli mongundu yontumba ya tumbulwa mpaka. Ou na naanaa epitikilo ndyoka okutuma iinyolwa yoye kOmukwetu.

Mokupopya iinyolwa tayi futilwa itashi ti oshinyolwa kehe tashi tulwa mOmukwetu otashi futilwa, aawe. Omauvitho, oonkundana, omapukululathanolongo, omapandulo, omahambelesho, nosho tuu iikwawo ya fa mbyoka, oyo kayi na okufutilwa.

Mbyoka tayi futilwa ongaashi omaigidho giinima ya kana nenge ya too- lwa, omahalitho giinima, omatseyitho goongeshefa nenge etseyitho omolwo- shinima shontumba shomuntu mwene. Iinyolwa mbyoka ho mono mOmuk- wetu yi li mokalugumbo oyo hayi futilwa. Moshifo shika oto mono yi- mwe kebandja eti-5 neti-6 mbyoka tayi futilwa.

Ohaku yelekwa, moondeimi, uunene wehala ndyoka oshinyolwa sha ku- tha mepandja, ano ngele osha kutha uunene wehala lyondeimi yimwe nena mwene gwoshinyolwa oku na okufuta R1.00. Ngele oondeimi mbali 1.70c nosho tuu. Oondando dhi nokufutwa omolwiinyolwa, otadhi monika alu- he kebandja lyahugunina mokalugumbo ke na oshipalanyolo *OMUKWETU*. Mpoka oto mono wo ondando yoshifo mOwambo, kOkavango nUushimba nosho tuu kombanda yomafuta (oorsee).

Efatululo ngandika olya li nale moshifo No.3 yomumvo 1967 kebandja 5 ngele oho dhiginine iifo yoye, oto vulu okutalamo ishewe.

**KAANUUMBO
WOPOOSA AMUHE**

Otandi mu tseyithile one aapunguli yiimaliwa moopoosa amuhe kutya; aluhe dhimbulukweni okutuma uumbo weni koopoosa dhaandjeni, opo opoo- sa yi u tume kombelewa onene yuumbo wopoosa kOvenduka.

Ano aluhe ndhindhilika omwedhi mu wa li wa toto okambo koye, o- po u ka tume wo momwedhi tuu ngoka. Tutye nee, ngele owe ka to- to muJanuali nuumvo; nena dhimbu- lukwa kutya, muJanuali omumvo ta- gu ya oto tegelelwa u ka fale ko- poosa, opo ka ka tumwe kOvendu- ka. Tashi ti momwedhi gwevalo lyo- kambo koye, otaka pumbiwa aluhe ka kale ka thika mombelewa onene, opo wo ka ka pewe omagano geva- lo lyako pauwanawa wako. Ngiika to pula nokuli kutya, uuwanawa ouni?

Ndhindhilika nawa kutya, aluhe ngele omunona ta ningilwa evalo lye, oha pewa omagano pakudhiginina kwe iilonga nopakuvulika wo megum- bo. Okambo koye wo ota ka ta- lwa naanaa ngaashi omunona ta dhi- mbulukilwa evalosiku lye. Ngele o- ka dhiginina iimaliwa oyindji negwe- dhelo wo ota li ka kala olindji. Nge- le omu na omake omafupi, nena no- magano (egwedhelo) ota ga kala oma- shona.

Ano shoshene elalakano olyo ndyo- ka kutya, ombelewa yi mone noyi tseye uumbo auhe mboka tau longo inaau dhipagwa po. Onawa wo sho komeho tatu ka fatululilwa wo noo- pelesenda dhomagwedhelo nawa mO- shiwambo tu uve ko nawa atuhetuhe mokupungula iimaliwa kwetu. Ta- meka ano okundhindhilika shoka we

shi lesa nokushi longitha wo patse- yithilo ndika lyotango lyoshinima shi- ka, melaka lyoye mwene. *Okupungu- la mopoosa okwo omukalo omwaana- wa unenenene!* J.Jacky Amkongo Oranjemund

**TWA TALELEPO KETUNDA
NOMINDAMBA**

Halwotango nduka sho twa talele po omapya getumo Etunda nOmi- ndamba. Omumvo gwa yi otwa li twa talelepo ishewe omapya ngoka. Tango otwa yi mEtunda. Mpeyaka otwa kundwa nombili komusamane Sarnuel Mateus. Konima yekundo, otwa topoka muungundu notwa yi momikunda okutalela po aamwame- me. Oye tu taamba nehalo ewana- wa. Osha li enyanyu kutse okumona aantu oyendji ya li ya gongala mo- hungi.

Twa thiki pOmindamba notwa pitula po omulongi S. Gueendama twa yi nooye kontaululi kookamba dhoka dhi li ko odhindjindhindji nopwa gongala oyendji yomAadhi- mba nAandongona.

Mokweenda nkwiya, otwa dhimbu- lula kutya ehala omo li li maamwa- meme, ihe otaa pulakene okathimbo nohokwe onene. Shaa tuu aatalelipo ya shuna, nena olwindji ohaa shuna miinima yawo iikulu. Oshali enyanyu enene wo kutse sho twa mono ku- tya, mEtunda nOmindamba aanona oya indjipala mooskola. Tu ya faleni koshipala shomusilishimpwiyu mo- kugalikana, opo ya mone aalongi taa pumbiwa. Andola u mone o- mpito okuthika mwene komapya getumo ngeyee!

Miina N. Shongolo

NATSE WO ONGAYAKWETU

Otwa kala ethimbo ele tatu gongalele pamwe moskola yetu yetitatu, mongerki mOnaanda. Momimvo ndhika aagundjukagongalo yandjetu ya indjipala yeshi okutopoka ya ninge omatitatu paali. Petameko lyomumvo muJanuali, aagundjukagongalo yomukunda gwaShakati-wes, oya pula ya pewe oshigongi shawo momukunda gwawo. Osha pulakenwa wo, e taa lombwelwa ya tegelele uule woomwedhi dhimwe nokukonga omuwiliki.

Aagundjukagongalo, Aashakati-wes ya lalekwa ya ka tote etitatu etiyali momukunda gwaandjawa. Esiku etihetatu lyaSeptemba nuumvo, mongerki yomOnaanda omwa ningwa oshituthi shetsakaneno lyaagundjukagongalo. Mpaka otatu ya mono mefano pamwe nepandela lyawo.



Aagundjuka yomOnaanda metsakannenoshituthi shawo

Oye li pongerki yaandjawa ya taalela oshinyangagongalo. Petameko lyoshituthi omweangeliste Gabriel Ipinge a popitha aagundjukagongalo noohapu dhaKalunga mEpsalmi 119: 9. Omugundjuka oto opaleke ondjila ye ngele ta kongo ekwathano naJesus. Nomugundjuka tu utha okukala kwe kuJesus:

Esiku ndika olya li enene kutse, oshoka omo tse aagundjukagongalo twa ningi tango etsakaneno lyomaimbilo nomahokololo. Etsakaneno lyotango wo mokuumba ongalo; Ayihe, otseni aagundjuka natu yi ningeni pamwe naJesus. Jesus gwe-tu na kale omutekelo komeho oku tu ukitha metumo.

Pehulilo tate Johannes Shifiona a tumbula paPsalmi 110:3 b aagundjuka yoye otaye ku aandukile ongashika omume mekelo lyeluwa.

Titus Uusiku

OSKOLA YAAVALITHI MONANDJOKWE

Otayi taamba aalongwa aape esiku lyotango lyaFebuluali 1969.

Mboka taa vulu okutaambe-lwa mo oyo:

Aakadhona ya pita "Junior Sertifikaat" nenge St.X.

Aayakulipangi ya pita ekonakono lya "S.A.Verpleegsters-raad."

Aalongikadhona.

Mboka taa ka nyola omakonakono ga tumbulwa mpaka nu-mvo naye tu tseyithile ngaa ehalo lyawo nokuli manga omayamukulo gomakonakono ngoka ya nyola inaage ya.

Ayehe mboka ya hala okutameka oskola naa tume eindilo lyawo kOmukuluntu gwoskola manga esiku eti-10 lya-Novemba 1968 inaali thika.

Ngele to ithanwa ila noombapila tadhi tumbulwa mpaka:

1. Onzapoyegongalo.
2. Onzapoyahuginina yoskola.
3. Epopilo lyomukuluntu gwonasaresa nenge oskola moka wa li.
4. Onzapoyuukolele.

"Kalunga okwa monitha elago aavalithi, aantu noya kolelela." (2Mos.1:20.)

Omukuluntu gwoskola Onandjokwe

OMUSHE KOMUKRISTE

Immanuel Ng.Kamati, Roodepoort,

ota nyola nghaha: Ohatu ti, nima okwa umbilange omushe ndele ngi shii eshi tau ti. Hano nafye yo ovakriste otwa umbilwa omushe tau ti:

"Ou te linyateke ne linyateke, ndele nee ou teliyapula neliyapule natango. Ndele tala ame ohandi uya diva okupa keshe tuu umwe eshi elilongela." Ehol.22:11,12.

Hano oove omuteleli wondjambi mukwetu, omunyasha nomukulunhu, otwa teelela ondjambi ilipipo? Oyo tuu ei yomwenyo waalushe ile ekanolongaho! Tu indileni Omwene e tupe Omhepo Iyapuki i tu longe okuuda ko omushe ou wa umbilwa omukriste mOmbibeli.

ONKUNDANA YOMOSHIGONGI SHAAGUNDJUKA YONDONGA

Etameko lyehokololo lyoshigongi shaagundjuka mOndonga olya holo-ka nale mOmukwetu gonumeli 17, onkene mpaka tapu landula etsikilo lyalyo natango.

Omumbisofi L. Auala, okwa talele po wo oshigongi shaagundjuka. okwe ya popitha nomatumbulo nga:

"Egumbo olyo omidhi dhehumokomeho. Ngaashi nda tala koombinga dhOwambo yetu, onda dhimbulula oshiponga. Osho aagundjuka mboka ya piti Std. VI inaya hala momagumbo gawo moka ya kala mo shito naakuluntu ya thigilwa oluhepo megumbo. Otwa tseya, omidhi ngele dha tsikwa mombepo, otadhi sile mo. Tu dhiladhileni omasiku ngoka ge li komeho getu. Kalunga okwe tu egululile ehumokomeho tu li longithe nawa. Ihe omeho kage nomakamba gokweenda ngaashi omagulu onkee kehe oshilyo nashi dhiginine iilonga yasho. Omidhi dhehumokomeho odhi li muKalunga. Ngele Kalunga okwe ku shita Omwandi, ihe omidhi dhoye to dhi tula muye, oto ka ima oonyandi. Ehumokomeho lyaa nomidhi muKalunga olyo oshiponga."

Aagundjuka yOndonga oya kondjo shili mokugongelela oshiketha shawo iimaliwa, ye yi kongo pamukalo gwontumba nenge gongandi. Ethigathano miigongelwa lya ningwa moshigongi shawo pamagongalo, otali landula mpaka:

- | | |
|---------------|--------|
| 1. Oshigambo | R81.00 |
| 2. Oshtayi | R79.00 |
| 3. Onandjokwe | R67.00 |
| 4. Okaku | R61.60 |
| 5. Eheke | R61.10 |
| 6. Oniipa | R55.70 |
| 7. Olukonda | R32.40 |
| 8. Oshaango | R23.00 |
| 9. Onayena | R15.00 |
| 10. Onyaanya | R15.00 |
| 11. Omuntele | R14.00 |
| 12. Ontananga | R13.00 |
| 13. Okankolo | R 3.10 |

Konima omutonatelishitayingerki T. Shipanga, sho a tumbula omapandulo ge, tatekulu David Shihepo, okwa hulitha oshigongi nelaleko nuuyamba notwa halakana.

Oohamushanga: Lusa Shipena naKristina Kamukoto

Dhimbulukwa wo Omushiti gwoye opomasiku guugundjuka woye, manga omasiku omiinayi inaaga thikana po nomimvo tadhi hedha ko, oondhoka to dhi popi e to ti: odho inadhi opalela ndje Omuuv.12:1.

KONGOLO KWA SHA

Valumenhu vaNekanda, vakongi vongoobe yaHauvinga, oshiima oshe li fika nee. Onhembu mafiku otai tembula Hai ti: momitwe omu na sha tuu? Ile otamu imbi ashike: "Novemba ila u tu mangukule?" Inamu lwa ondede.

Mulumenhu, toola omambo, opo fiku to i mo mekonakono omo, owa dililwa. Nena oto limemesha ashike; nekonakono loovene oshivilo shehafo. Nge kamu na sha oto ke li tala ongengungule nomushiteli yo mwene nokuli, shaashi vati oha pula oyo inai wana okupulwa. Omunyasha, kondjela oshiwana shoye; omolwasho u li momahongo. Kufa Ndiba meembwa. Owa fa tuu oikuti yokomhindo? Tala, ovanyasha ongunungu nanghwaka da hailudu oshingali, fye twa lya ko shetu.

Tameka hano eendululo pashinyolwa shaN. Hamata mOmukwetu No. 14. Ashike mu(b) ohandi weda mo: 1. Inda p o n h e l e yelimweneneno 2. Tula omadiladilo oye aeshe moshilongwa. 3. Lesha nde kala u udi te ko.

4. Onawa nge to lesa kombinga yoshinima shonhumba u leshe ko shihapu pefimbo limwe opo to udu ko nawa. 5. Diladila nee ngenge oto dimbulukwa. Ngenge ito dimbulukwa po shihapu, leshulula natango. Eshi otashi ku kwafa uha dimbwe. Eudeko a like lihe li pamwe nokutula momadimbuluko itashi kwafa sha. Ino tya paife we shi shiiva sha pwa, aye. Pefimbo longalo, ile wa londa ombashikela, ile u na eemhele to ka tala omeva ile peni hano, diladila oshinima eshi wa leshele.

Amushe ovo tamu ka nyola omakonakono ohandi mu halele eenghono nepuniko. Ondi na elinekelo otamu ka longa sha shomupondo. *L. Hamunjela*

ETALELOPO MUGOBABIS

Esiku eti-7.9. 68, otse otwa talelwapo kaayenda omuyevangeliste gwoongerki ayihe omusamane E.Angula yo nomusita gwaagundjuka mehalakano G.Max.

Mohungi yokokomboni omuyevangeliste S.E.Amutenja okwa tamekitha ohungi negalikano sho pwa imbwa tango 435 nokwa leshwa Ps.107:1-9. Okwa pandula Kalunga sho e ya dhimbulukwa moluhepo lwawo moku ya tumina aayenda nokwa ti: "Tangi unene sho mwe ya po, otatu mu taamba nenyanyu. Otatu egulula oomwenyo dhetu, opo mu

tu pe muuyenda woohapu dhe mu etitha huka."

Gerson Max okwe tu thikithile omakundo ga zi komusamane P. Laukanen koSoomi. Okwa pandula ishewe Kalunga sho eenditha oshilyo shongerki ayihe yOwambokavango sigo sha thiki nokuGobabis wo. A tsikile oku tu popithitha noohapu: "Ethembo lyo opala, ongashingeyi, tala esiku lyehuputho onena hangula. Ino li kandulapo ngoye ino li hunutha." 2Kor.6:2.

E. Angula okwa lesa Mat.14:30 nokwa fatula nkene oyendji taa ende mefuta lyuuyuni mbuka yo itaaya igidha Jesus e ya hupithe, nonando oye okwi ilongekidha oku ya hupitha. Oyo ya mangwa komulungu. Okwe tu hiya tu ye kuJesus tu hupithwe.

Okwe tu ulukile omafano nomolupe tuu ndoka okwa thikitha omakundo gongerki ayihe yOwambokavango kutse.

Eti-8.9. aayenda ya talele po egongalo lyoombaati. Nkwiyaka oya hokolola oshilongatumo tashi longwa kongerki yaELOK. Megongalo lyAawambo moka ya talele po komatango gesiku tuu ndyono, omwa li mu na iituthi yopane eshasho, ekoleko, ekuthilo nUulalelo Uuyapuki. Kongulohi aayenda oya ningile ohungi mokati kaalongwapangi. Mesiku lya landula sho ya li ya ningile aamati yondoolopa kumwe naalongwapangi ohungi, tate Angula okwa tumbula: "Otse aantu naamwayinathana muKristus. Pamwe opu na ngoka ti iteka Kalunga omunamwenyo? Uuvu weiteko owa geya nopethimbo lyetu. Ila kuJesus u aludhwe. Aneka omwenyo gwoye koshipala she, opo e ku aludhe." Konima yeuvitho aalongwapangi ya ulukilwa omafano gaapangi Aawambo nkene ye li miilonga taa yakula oshigwana shawo sho yi igandja tango yoyene kuKristus.

Omusamane Angula pamwe na Max oya talele po omahala agehe konyala noya thikithilemo etumwalaka lyaJesus.

Omagongalo lyAawambo, Aaherero nolyAanama oga li ga gongala pamwe muKatutura moskola yaanona. Omuhongi M.Krichof okwa pandula Kalunga sho a tumu aayenda nokuGobabis wo nokwa hambelele omolwawo. Natango Angula a gandja omakundo gongerki ayihe yaELOK mokutalitha omafano taga hokolola oshilonga shevangeli sho tali vangalithwa maantu koombinga noombinga. *Ev.S.E.Amutenja*

SERETSE KHAMA MOSHIHAKULILO



Seretse Kama

Omushamane Seretse Khama, opreshidende yaBotswana, okwa kwatwa koudu mafiku a djako nde a twalwa moshihakulilo muJohannesburg neulumo. Okwa popiwa meerradio nomoifo kutya, oudu wa twalifa opreshidende Khama moshihakukulilo oo exuli lihe li nawa.

Omuponhele waye Dr. Quett Masire, okwa tumbula euditonghenda a tya: "Ofye otu udite olukeno normalipulo manene omolwomupreshidende wetu Khama eshi ta vele nghaho." Paife otaku popiwa kutya, okukala kwaye mombete youyaha-me otaku ti po ngaho hwepo efi-mbo nefimbo.

OLUKANDA LIKULU LAVENDUKA

Omuponhele wepangelo laSuidwes okwa shiivifa kutya, olukanda likulu laVenduka ola tembulwa po papangelo novanhu vamo vahapu ova tembukila kolukanda lipe Katutura.

Nonande vahapu va tembukila kuKatutura, natango ovanhu vamwe ova fyaala molukanda likulu. Epangelo ola tokola kutya, otali ka handukila aveshe ovo va fyaalamo, ovo va dile kOwambo odalate yavo otai teywa novatilyane ovo tava tambula moilonga ovakalimo otava handukilwa. Ovo inava hala okuya kuKatutura, otava dulu okuya komadu avo.

OSHIHAUTOTASHI LANDITHWA

Prince Super Miler
Omodela 1966
She enda oomaila 10,000
notashi kotha R500.00
Ngoka e shi hala ne ye
kOshinyanyangidho kOniipa.

OUNYUNI OTAU TONGO SHIKE

MOWAMBO OMU NOMAHOOLI

Ope neinekelo lyakolalela kutya mOwambo omwa fa mu nomahooli. Osho wo sha monika mOtavi. Omamanya ga fulwa nomOwambo, anuwa oga fa naanaa omamanya gomiilongo yilwe ngoka haga kala pokuma pu na omahooli.

ONGUNDU YOKUKONAKONA

Opa totwa nale nokuli ongudu tai konakona oshiponga shodila 707, die Pretoria, oyo ya dipaele oindele ihapu popepi nokapale keedila mOvenduka. Ongudu otai konakona nawa nokupulapula nawa nghe oshiponga sha enda.

VAMWE OTAVA PANGULWA

Eshi odila 707, die Pretoria ya mbolokotelele pedu mOvenduka nde ya lya ovanhu vahapu, oinima yaovo va li modila, eeradio, eendjato, omafano, oimaliwa oambale, oidjalomwa, eembapila di noshilonga, eevili noinima ihapu, oya li ya halakanena apeshe. Ova-polifi ova kala va kelela paha vakwe sha. Ovamenhu vamwe ovatilyane osho va vake po oinima imwe nde ova kwatwa notava pangulwa paife.

OMUSHAMANE SALAZAR

LISSABON.— Dr. Antonio Salazar, oministeli yotete yaPortugala, okwa kundanwa e li nawa eshi a tandwa momutwe. Omushamane Salazar oku needula 79 moukulunhu.

ONGOPOLO TAYI KONGWA

UHLNHORST.— Ope niilonga yokukonga ongopolo pofaalama Sib nokwa kundanwa iilonga otayi humu nawa komeho. Aatiiigane yahetatu naaludhe oyendji oyi ipyakidhila noshilonga shoka shokutala nghele mevi omu nongopolo

A LUMATWA KONGAMELO

AROAB—Omutiligane gumwe, gwe-dhina Andries Blaaw pofaalam Schanskolk, ando gwa nanwa mo kongame-lo. Omusamane Blaaw okwa li ta kwatha mushiinda she okutsilika ngame-lo moshihauto e mu landa kuye. Ano okwa ningi manga ta siisilitha omunya kohi yepunda lyakatilambuga, ye oku mu na omayego kokutsi, hanga a ya nakwo. Okwa ningwa iilalo inene noye mu falitha moshipangelo moka okutsi kwa hondjelwa ko niilalo ya a ndekwa. Omusamane Blaaw okwa li a haluka unene aniwa.

ETWIKO LOMUTIMA ETITATU



Omushamane Peter Smith ou a tulwa omutima mupe mafiku a djako

Kaapstad - Moshihakulilo die Groote Schuur, Kaapstad, omuprofesori Chris Barnard pamwe noshipana yaye ova twika vali omutima momushamane Peter Smith, 52, omulongimina wokuJohannesburg, pomafiku a djako.

Meeradio nomoifo mwa shivifwa oshinima eshi nokwa tumbulwa yo kutya, omushamane Peter Smith ota xumu nawa komesho moukolele. Oshilonga eshi osho oshititatu okuningwa muSuid-Afrika.

Omushamane Blaiberg, ou omutivali waavo va twikwa omitima muSuid-Afrika, oku li natango moshihakulilo omo nokwa popiwa kaku shiivike onaini tai keumbo.



Omumati nguka oti idheula okupinyuka oshitenda shoka shi li koongudhi. Mboka yi idheulalela ohaa vulu okuninga iikumitha.

OIPONGA YA PULA EEMWENYO DIHAPU

Okwa popiwa kutya, mefimbo lixupi lonaweek, ovanhu 161 ova fya moiponga yomeendjila, momashina moihauto, nomambesha a mbolokotela pedu ile a wila moilambo novanhu va fya pokafimbo opo.

India—Ovanhu vefike 82 aveshe kumwe va fya muIndia. Okangudu kovanhu 52 kovaimbi ka hangwa taka ende membesha, aveshe ova fya eshi embesha la kulumukila mekangha lilelile. Embesha likwalo la li novanhu 28, ola wa komutuni weefute 500 naaveshe ofilu.

Indonesie—Ovanhu 30 ova fya nava-mwe 150 ova ehamekwa eshi omashina okolutenda e lindenga mumwe muDjakarta.

England—Edila limwe laFrankryk muEngland, hali tukatuka kombanda yefuta, ola wila momeva efuta novanhu 12 ova filamo.

Ponhele Lakehurste muAmerika, odila vali imwe yokutalatala, oya mbolokotela pedu noya lya ovanhu vatatu.

Ovaneumbo limwe vahetatu vomu Slade, Kentucky, ova fya oshihauto shavo sha fenunuka fimbo sha li momututu wondundu omo mwa enda oshitauwa. Oshihauto she li ngwashula mondudu noshiponga sha holoka

Mu San, Costa Ric ounona va'ano nakamwe va fudikwa nomwenyo eshi ekakamo ledu la ningwa nomaumbo a nyonaunwa po kodula idju.

Venezuela—Ovanhu vatatu ova fya novayulishi 15 okwa diladilwa ova fila momeva, eshi ekakamo ledu le lelinyenga moshilongo.

Vryheid—Omutilyane wedina William Burger okwa fya eshi okadila omo vali naxe ka wila pedu popepi na Vryheid. Omushamane xe okwa ehamekwa unene.

Odila imwe vali oya topela mombanda ponhele Mulhouse nomushingi ina xupa vali.

YATATU YA VALWA

Mariental.— Omukulukadhi Kitty Steyn gwomofaalama Zonderloop okwa vala uunona utatu auhe uukadhona, wa kola nawa. Omusamane gwe Hedrik Steyn okwa nyanyukwa. Omukulukadhi oku noomvula 34.

OREPUBLIKA YA HALA ELO-NGELOKUME NASWAZILAND

MBABANE.—Ehalo lepangelo la Suid-Afrika olo okutwikila ekwatafano lombili melongelokumwe liwa naSwaziland, eshi edu eli la manguluka paife, osho omushamane G.J.J.Steyn, hamushanga woilandifomwa muSuid-Afrika a popya.

Omushamane Steyn okwa hovelifa neendjovo edi oshivilo shomafiyafanepo a longekidilwa oshivilo shemanguluko muManzini.

Okwa popya kutya, okukala kwepangelo laSuid-Afrika moshivilo osho kaku fi ashike okudana oshivilo nokuyandja efimano koshiwana shOvaswazi, ndelene okuholola ehalo loRepublika okutwikila elongelokumwe noshiwana eshi sha mono oupe.

Elongelokumwe eli ola kala po nale.

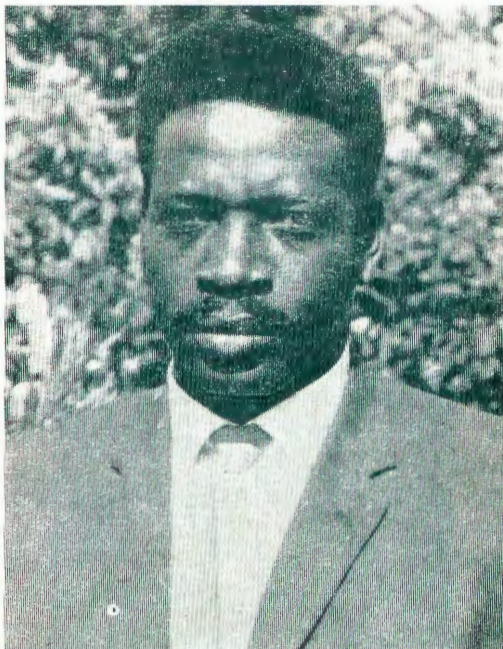
UUMWAYINATHANA

Eslen Peter Ambambi ota nyola ngeyi; Uumwayinathana owa etwa kuKristus mwene sho a si komushigakano hoka twa etelwa ohole, ombili nuukuume mekwatathano naantu yi ili noyi ili mokati ketu nenge pondje yeve noyoshigwana shetu Aawambo.

Omuyapostoli Paulus otati: Gwanitheni uuwanawa auhe. Natango aamwameme mbyoka yoshili naambyoka yo opala naambyoka yuuka naambyoka ya yeleka noyi na epopilo ewanawa, ongele omikalo nenge esimaneko, oombika ayihe yi dhiladhileni koomwenyo dheni.

Ishewe naambika mwe yi ilongo nomweyi longwa nomwe yi uvu kungame, yi gwanitheni. Kalunga kombili nota kala pamwe nane. Kalunga kombili oye na kale omuyakuli gwopokati kokukalamwenyo kwetweni. N. Metunda naJ. Shaamena Okaukweyo, Etosha, ota nyola ngaha. Efiku limwe onda ka talele po mukwetu Lucas Dumeni oku ha longo. Otwa kundafana nombili fiyo handi shuna. Konima yokafimbo ondi wete mukwetu a endjeleleka eenyala ta ti okwa mona oshiponga. Mboli eenyala daye adishe mbali da tetwa ko kokashina kokukashula omwiidi. Pai-fe oku li ngo xwepo.

Tu indilileni fye ava hatu longo mehalakano mOushimba, osheshi ohatu monenemo oixuna noiponga inene.



L. Nanghaku, Posbus 29, Kombat

Ovakriste vakwetu otwa dimbulukweni tuu oshipango eshi oshititano nashimwe osho tashi tu keelele tuha nyone ohombo? Omulumenhu nomukainhu keshe umwe ponhele yoye oshipango eshi otashi ku lombwele: "Ino nyona ohombo."

Apa onda hala tu taleni kombinga yetu fye ovalumenhu. Unene tu taleni ovanangeshefa vamwe naavo hatu i kouxwi komaonda. Ovanangeshefa vahapu ova dimbwa oshipango eshi nova tala pamwe osha tutuka kashi navali eenghono, ndele oshi na omwenyo efimbo keshe notashi ku londwele u ha nyone ohombo. Eshi ongeshefa yoye itai xumu komesho, omolwashike mbela? Oshike sha teya ondingosho yoye? Kape na malimbililo, oipala ashike.

Waima, haiti, ondingosho yoye ile ongeshefa otai i komesho ngahelipi ngenge owa tula mo ohonda onga ou te ku longele? Omunhu oo ohamalilamilema ngo we likongela. Ohai ku dimbulukifa kutya, ohonda oyo wa tula mo otai ku shoteke ashike, tai ku xuu, osheshi oi shi shi kutya, oyo nakuya. Kaume mongeshefa yoye tula mo mumwanyoko ile nekulu loye ile omunhu umwe elili ehe shi ohonda.

Twa tonga kombinga imwe, tu taleni yo kombinga yovanamaonda. Ava mbela otava nyono ohombo ngahelipi? Waima, haiti, ku shii kutya, momaonda omwa kala olukanda. Onhele oyo ihai mono omushingi (ndalaiva), oofolomana, ovanambe-lewa, ohai kokwa movapolifi, oo-

nduna, ookuki ihava tongwa nee ovo oupyakadi. Ovakwita vanekanda, oikongi yongombe yahaivinga, otwe ya okukongela omaumbo etu nedu letu eliko. Nde inatu ya momaonda okukongela omaumbo etu eshunduko nomikifi.

Taleni ohatu nyonopo eehombo daava ve li omu ndele hatu linyonene yo detu fye vene kOwambo. Elinekelafano pokati komuhomboli nomuhombolwa womukwaushimba tali teka molwoinima oyo.

Ombibeli koulunde ngaau otai ti: "Okeshe tuu omunhu ta tale omukainhu e mu xula oye kwe mu haela komwenyo waye". Mat.5:27, 28. "Kamu shi shi omalutu eni oo oinhimbu yaKristus? Hano ndi kufe ko oinhimbu yaKristus ame ndi i ninge oinhimbu yohonda? Shidalelwe. Ou ta kumu ohonda oye ota ningi ombelela imwe nayo". 1Kor.5: 15-16. Onghee hano vakwetu nye, omuhaeli keshe mokuhaela kwaye ota nyono po olutu laye mwene. Tu djeni moulunde woludi keshe yoo. L. Nanghaku

OMUKWETU

Oshifo shOngerki onkwaevangeli paLuther yomOwambokavango
Die Tydskrif van die Evangeliese Lutherse Ovambokavangokerk
Oha zi mOniipa.
Omukuluntu gwoshifo/ Hoofredakteur omumbisofi
Dr. Leonard Auala,
Amushanga / redakteur
Ondando komumvo mOwambo 70c
kUushimba nOkavango 90c
Kombanda yomafuta R1.30c.
Oondando nomambestelo naga tumwe kOumkwetu,
Oniipa, Pk. Ondangwa, S. W. A.

Oshinyolwa shuule			
wondeimi 1	otashi futilwa	R1.00	
oondeimi 2	"-" "	R1.90	
oondeimi 3	"-" "	R2.70	
oondeimi 4	"-" "	R3.40	
oondeimi 5	"-" "	R5.00	

Oto vulu okutuma efano lyaashoka wa hala shi tseyithwe nomatumbulo wo gasha ngele ope na.

Finnish Mission Press
Oniipa P. O. Ondangua