



OMUKWETU

Oshifo shOngerki onkwaevangeli paLuther yomOwambokavango/Die Tydskrif van die Evangeliese Lutherse Ovambokavango Kerk

No. 12

JUNI

1968



TAMBULA JESUS MOMUTIMA WOYE NGOKAANA

Mark. 10:10.

Ou ita tambula Jesus Kristus Omukulili, te likukutike nde ota dini, ta landula eendunge, ehalo neenghono daye, ta landula omutwe waye nde ta kala moulunde, ita i moshilongo shaKalunga.

Okaana ohake liefele meke laina nolaxe. Otaka teeleele aische kovakulunhu vako. Xe epopilongulu lako. Momutima wako kamu noululu. Elineekelo lako oli li movakulunhu vako. Osho naanaa ofye

tu nokukala naTate Kalunga. Tu nokutula nokuhola Kalunga. Tate tu mu lineekele komesho yoinima aische. Tula elineekelo loye muye. Liyandja kuye ngaashi u li. Oye e neeshali dihapu kwoove. Ota dimi po omatimbe oye aeshe nde ote ku kosho nawa kedilo keshe. Ote ku amene koiponga nde ote ku kwafa meemhumbwe doye. Oshinima shimwe ashike to shi pumbwa, shi dilika nawa, osho:

Tambula Jesus momutima waye ngokaana. Efa e ku longife. Efa e ku pangele. Efa e ku endife. Efa e ku hanyene. Dulika koipango yaye. Mu indila ombili nge we mu handukifa. Fya oshisho u ende mouyelele waye alushe. Pefimbo liwa ote ku papata nde ote ku teneke omake aye nde ote ku nangeke noupuna mounyuni ou nofiyo alushe. Omuudifi.

JESUS OYE OUYELELE WOUNYUNI

Opo Jesus ita longifwa, opo ovanhu ve mu dina nde itava longifa ile itava longo paendjovo daye, ope nomilaulu noilongwanjima yapo oyopaupofi. Onghe aishe omunhu te i popi, te i longo, te i diladila, ne i talele tete mokalitalelo keendjovo daKalunga. MOWambo nomoilongo aishe mounyuni eendjovo daKalunga ngenge itadi pewa omhito ya wana, omupya otau pangele. Ou ite liufa keendjovo daKalunga, ta shikula eendunge ile eenghono daye, nakale kutya olye-lye, ota shakenekwa koipwe. Mefimbo eli ohatu pumbwa okuuda ko oshinima osho.

Jesus a ti: "Ame ouyelele wounyuni, ou ta kala mwaame ita ende momulaulu." Ouyelele ou wevangeli laJesus Kristus otwe u halela momaumbo etu, momikunda detu, meeskola detu, momaongalo etu momapangelo etu, moilonga yetu aisheishe mOwambo, moushiinda nosho mounyuni aushe.

OVAENDA VA DILE KUZAMBIA

Ovalumenhu vane ve lilepo ongeshefa Zambian Cold Storage yokuZambia, ove uyile mOvenduka. Ova kundafana novakulunhu vongeshefa Damara Meat nawa eemhito dokulandifafana oikwandoosha. Ova li oindele itatu nomulaule wedina M. Chembi.

OMULUMENTU A DHIPAGWA KESHINA

Omusamane omutiligane C. B. S. van der Merwe (58), okwa lyatwa keshina mopate yedhina Voortrekker Road muGobabis.

OVAHERERO TAVA MONO KOMUFALA

Ngaashi nale nosho yo paife okwa shiivifwa kutya: OvaHerero otava mono komufala nde ota kala mOkakarara. Epangelo lovalaule nehenokomesho lavo olo la shiivifa ngaha. Komufala ota ka hovela oionga yaye muJuli.

EENHOKOLWA DOKANGUDULONGEKIDO KOUDIKONI

1

Okwa kundafanwa omaupyakadi taa etwa koikolwifa. Epangelongerki la fimana otali indilwa li tale ngenge tashi dulika Omuwambo umwe amonenwe omhito okulihonga-efiloshisho leengholwedu noinima ikwao i nekwatafano noukolwe opo komesho a ka kwafe ongerki moshinima eshi shidjuu.

Otaku indilwa Irja Repo a longekide okursus tai wapalele Enongelo leenhumwafo tai fatulula oukolwe nelidiliko.

2

Eshi omalilongekido ekwafo lovapofi a ningwa mahapu nokuli, onawa ngenge ekwafo lovafitamati tali hovelwa. Omaongalo 16 okwa tuma omivalu dao. Ava va shivifilwa ove fike 64. Muvo omu na ovanhu 24 inava wanifa eedula 20.

Mokukundafana omwa penduka ediladilo ngenge tashi dulika okwiifana omushiivi wekwafo lavo a kale manga apa. Ope na eekursus deenhumwafo tadi pukulula ovakulunhu vounona ovapofi novafitamati. Eekursus edi odi shii okulundululwa mOshiwambo.

3

Okangudulongekido oka kundafana eefilishishongulu tali pumbiwa omolwekwafo lovakulupe, lovanaudu voshinamenena, lovakambelindunge nosho tuu. Okangudulongekido otaka indile Epangelongerki la fimana li diladila omhito okutungifa eengulu da tya ngaha. Omhumbwe opo i ili.

4

Okangudulongekido otaka indile omaongalo a tuminwe eembilive omolwekwafo loingudu. Oingudu otai dulu okutambulwa mofikola yoilonga mOlukonda. Onawa ngenge tava monenwa ngaha omhito ve lihonge oionga opo va dule okulikwafa.

5

Omivalu dovayakulwa vamwe voudiakoni mOwambo:

Ovakambelindunge	45
Ovanananghwengu	39
Ovanaudu voshinamenena	77
Ovafitamati	64
Oingudu	141

ESO TALI ENDELELE

F. Nakale Teodor C.D.M. Oranjemund, ote tu popitha ta ti: Oshigwana, otwa ninginamo, otwa lika kokambwa. Eliko ndika tu li mulyo otali hulupo. Omukwetu likola, ihe ino dhimbwa nando Omushiti goye. Yanuna Ombimbeli yoye, tala Mat. 6:19-21.

AAKWANEZIMO YOMUDHIPAGI OYA TUMU ONDELEKE-LAMA

Washington. - Omalaka geuvitohenda kaanegumbo yanakusa Robert Kennedy, oga kunguluka akuhe muuyuni moondelekelama, sho onkundana yeso lye ya uvika. Ondelekelama yimwe oya tumwa kaa kwanezimo yomudhipagi Sirhan Bis-har Sirhan muJordan, ya shainwa komukulukadhi Mary Sirhan ya ti: "Otatu galikana Kalunga a ete ombili, ombili yoshili moomwenyo dhaantu!

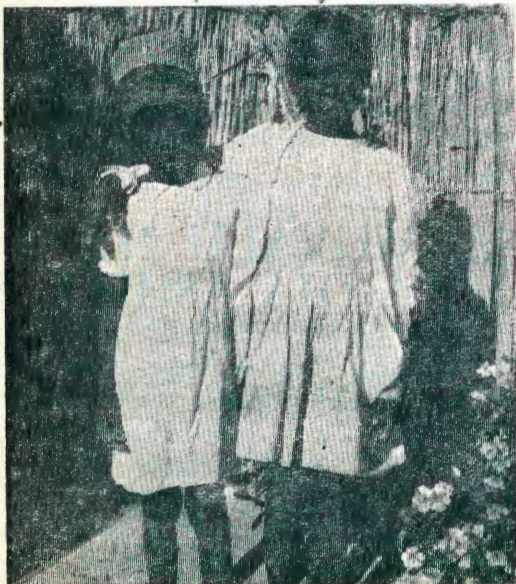
K. Absalom Shigwedha, Oranjemund, ota nyola ngeyi:

Esiku 18/5/68 oshiponga oshine-ne sha monika kaamati ya adhika mondjila. Oya li yaali gumwe ota hingi oshihauto. Okwa li ku na on-dau. Oshihauto mondjila sha puguma mo kashona nosha kandoma. Aamati mbano oya lamininwa. Naku-hinga okwi ithana mukwawo ta ti: Ila u patukunune ndje!" Mukwa-wo okwa yamukula: "Nangaye wo onda patekena." Omuhingi nguno okwa galikana iikando itatu nokula-leka mukwawo a ti: "Kala po nawa kuume," opuwo a hulitha. Edhina lye oPetrus Haimbodi. Eso ndino olya li ombadhilila ihe omumati okwa li inaa dhimbwa Kalunga. Aaholike oyakwetu, tu kondjeni, oshoka katu shi wo Omuwa uuna te ya 1 Tess. 5: 11.

Omumati gumwe okuli moshipangelo okuli nawa a ningi omunamwenyo.

E YI ITHANA KEVULULUKO

Esiku eti-9 lyaApilili 1968, momukunda Ehäfo megongalo lyokEheke, omwa kana omukulukadhi edhina lye Lovisa Petrus Amuaalua. Omukulukadhi nguka okwe ehame ne omwenyo, nokwa pangwa nokwa aluka. Uuvu mbuka owa tukuluka esiku ndyoka ombadhilila. Megumbo inamu adhika aantu sho a zi mo naanona ye yatano. Osheeli shoomvula omugoyi nomushakati gwoomvula heyali, gumwe ishewe gwoomvula ntano, nagumwe gwoomvula mbali nokankelo koomwedhi dhowala. Aantu ya tameke okukonga esiku ndyoka sigo ongula yesiku eti-10 lyaApilili, inaa mona sha. Pethimbo ndika ndishi ethimbo lyomeya ogendji noonkondo,



Mefano muka tamu monika aanona yaali mboka ya monika ye na omwenyo, nando ye ende momeya amanene. Omadhina gawo kolulyo Leila Hilde na Paulina-Panduleni Ndejapo ya Philippus David.

ESO LYE YA KUTHA PO

Ependa lyuukriste woshili Gabriel Amutenya muElim, a mana oondjenda dhe eti-18. 5. 68 ano. Ngohele, eti-17. 5. 68 omunona Hilja omwana gwomupangeli Silas lipumbu, a mana wo oondjenda dhe.

Omusamane nguka Gabriel oye shili a tseyä nawanawa okatekisa

KALUNGA NA HAMBELELWE

Johannes P.Ndemueda, ota pandula ta ti: Ame nomukulukadi wange ohatu hambelele Kalunga. Meamenno laye otwa mona omumati wetu Naeman Johannes, a dalelwa mOnandjokwe eti-25.3.68. Okwa li

onkene aantu ya nyengwa okumona oompadhi. Oya kongo sigo etine. Nani oonakukana oyu uka kombuga yUukwambi kOmadhiya, manga aantu ya kongo meni lyOndonga sigo Uukwambi mbu wa shiga ko. Taa! Kalunga a longo iikumitha. Yina nokanona komodhikwa a monika mUukwambi nokwa thikithwa kuyina esiku ndyoka eti-11 lyaApilili 1968.

Natanga aantu ya tsikile okukonga aanona. Esiku eti-13 lyaApilili okwaako kwaKalunga kwa yambidhidha, kwa monika aanona yaali ye na omwenyo. Osheeli edhina lye Leila-Hilde nagumwe edhina lye Paulina-Panduleni Ndejapo, oya zilile mombuga. Katu shiwo oye ende peni omeya momilonga nomasilu agehe. Kalunga e ya enditha ngAaisrael mefuta lyomanenge. Esiku eti-15 lyaApilili omunona gwoomvula mbali a monika a mana nale oondjenda. Okwa sile kombanda yaMpundja. Katu na omalimbililo a si omolwomvulwe nenge omeya niilyani. Oonkatu ndishi oontshona okweenda ondjila oye awike.

Esiku eti-17 Kalunga e yu ulukile ishewe omunona gwoomvula heyali a monika a hulitha oondjenda dhe kOnamanenge mombuga. Kalunga okwe tu talitha iikumitha iinene. Opwa piti owala omasiku gamwe, Kalunga sho ithana yina yaanona esiku eti-21 lyaApilili 1968. Omeho getu oga tala iikumitha, unene iiponga yokomalutu gaamboka ya hupu ye nomwenyo. Kalunga na hekeleke omusamane he yaanona naamwayina, na yina, naayehe mboka ya si oluhodhi omolwe. *Lahja Gift Amuaalua, Omutseyithi.*

akehe momutse gwe. Ngashingeyi Kalunga e mu kutha po. Oluhodhi nduka lwa landulathana, olwetu longo ngashika Omuwa mwenne ta ti: "Ongame Eyumuko nomwenyo."

Gabriel a valwa nalelela okanona komupangeli ka valwa 24. 10. 1957 ayehe ya yi kekululuko onke olufo oloye nolwandje, kotoka ano!

Ev. Petrus Eelu.

a shindjakana mefeto laina, ndele Kalunga okwa kwafa ngaho nawa. Omundohotola womOnandjokwa okwa kwafa poludalo laye.

Ovahakuli mOnadjokwe ohatu mu pandula amushe. Meme Klaudia ote mu kundu nombili nokamati ketu Johannes oke li nawa.

KA KOLA KE KU LYE

Esiku limwe Joonä okwa kwata okambambigona nokwe ke eta kegumbo ke nomwenyo. Tate sho e ka mono a nyanyukwa. Okwa tameke nookuli oku ka nonoma niinonomi yawo oyindji yoshipagani, opo ka kanithe anuwa omutima gwomiihwa. Okwe ka luku nookuli edhina lyonganga ya simana "Mukwanayuma."

Mukwanayuma a tekulwa nawa, a ningi ondema. Esiku limwe ku nokatosi, tate e mu egulula ko. Okwa li ta nuka nawa atuhe twa nyanyukwa, twa yolo twa za uuza. - Hee, iihuna tuu, Mukwanayuma a mono okambululu miihuali yegumbo. A faadhuka po nokwa yi miihwa. Nani omutima gwomiihwa inagu za mo mokambambi. - Osho tuu omukriste e li megongalo inaa valulwa kOmbepo yaKalunga, ota shuna monima muupagani.

NATANGO-KA KOLA KE KU LYE

Esiku limwe omukongo gumwe okwa kwata okangwegona mokuti. Okwa hokwa olwala lwako nokwe ka eta kegumbo. Okwe ka palutha nokwe ka putudha.

Ookuume ke naashinda ye mu lombwele: Oshiponga shoka we eta mokati kaantu, dhipaga, dhipaga! Omukongo ta yolo ashike e wete taa popi uusama. Ongwe ya koko ya ningi ekundukima.

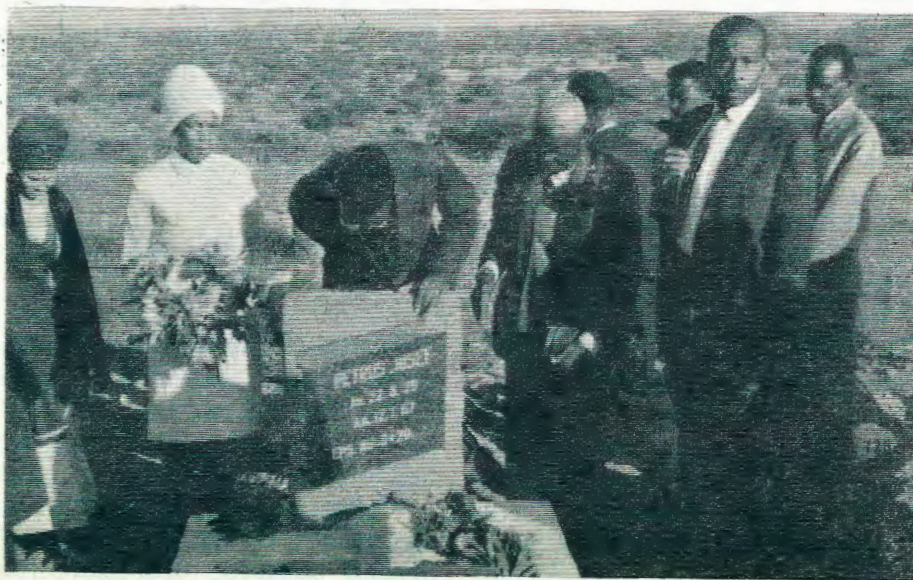
Inapu pita omasiku, aanegumbo ayehe ya yi kiilonga, yamwe ya yi kedhiya. Omusamane a kala awike megumbo. Okwa piitha ko ongwe ngaashi i igilila. Ongwe ya kanitha enyanyu. Oye mu nukile noye gu mu latha. Oya tete pothingo noya nu mo ombinzi.

Osho omumati nomukadhona gontumba omwaanawa ha zala embundu lyomulenge, ye ihaa pu okasekeleta komulungu ta dhipagwa kuu-lunde ngele ta dhana nawo.

Johannes Makili.

OMASHINA A TETA KO OKUULU

Luderitz.- Omulongi mofabulika umwe edina laye Matheus Sagaras, okwa mona oshiponga. Okwa kuma komashina taa longo mofabulika nde okwa tetwa okuulu. Okuulu okwa hondjelwa ko moshihakulilo nde pahokololo ota ehene komesho mokukala nawa.



Momawendo esiku lyepako lyanakusa P.J.Kathindi mOvenduka

OMAKAYA OTAA ETA OUDU WOMUKOLO POPEPI

Omakaya otaa eta oshiponga shinene koonakwalongifa. Otaa hanaunapo eliko loye notae ku nyonopo ove mwene kolutu.

Omunwi wokombiya oto hange a fipuka eemhanda a ninga omalambo kokushila omakaya. Omunhu a tya ngaha omapunga aye okwa xwikwa komwifwi womakaya. Omapunga kae na vali eenghono dokufalakata, shaa a fuda neenghono ota tameke okukolola ye ta ti oxwexwe.

Ofenya edina layo olo ngo tali ku lombwele eshi tali ti: "Onghungulula mahodi, ondobodola manina yaShiwayu shaMukongo, ya pulwa kovafenyedi nokwaava va teka omupolo. n.s.t." Edina ola twa shili. Vahapu ova teka omupolo kuyo.

Vahapu tava popile momayulu. Omenge yomomayulu ya likamo komakaya. Omunhu a tya ngaha okwa nyonauka shili nomufudo waye kau li vali melandulafano liwa.

Omunhu a nyonauka, ita fuda vali nawa, ota xwema ashike.

Omufenyeni ita fenyana ina kolola. Omunwi wokombiya ita xwameke ina kolola nomunwi woushikaleta oshoyo.

Oxwexwe tai kulu, oudiyo Momakaya tau lihanene nolutu wa yuka nomenelive. Omunhu ta tameke okupwalala. Ita diladila vali nawa. Komukalo ou omakaya taa shilile omunhu mekove loudu T.B.

Ye omuyapostoli Paulus okwanoyola ta ti: Ile kamu shishi nokutya olutu lweni olo otembeli yomhelo Iyapuki ei i li munye mweipewa kuKalunga ndele nye kamufi veni vene? Fimanekeni Kalunga hano nolutu lweni, 1Kor. 6: 19, 20.

L. Nanghaku.

Laban Nanghaku, Kombat, ota hokolola: Efiku eti - 25. 4. 68 odila imwe oya wa mombada, eshi ya li tai tuka pokapale keedila kaKombat oya teka omaulu nevava. Ou a li mo oye aeke ina mona oshiponga nande.

E TU TETEKELE

Omusamane Petrus Josef Kathindi gwomOvenduka okwa kwatwa kuuvu womutse nokwa hulitha oondjenda dhe sho a adhika a falwa moshipangelo. Petrus Josef Kathindi nguka okwa li a tseyika koyendji, oshoka okwa li omwiinkelwa nokwiilikolele ookuume oyendji mOvenduka nosho tuu palwe.

Omuselekadhi gwe oye meme Elizabet Josef Kathindi ngoka ta monika mefano ta taamba oongala kukuume ke Sara Lazarus, gumwe gwaathindikili taa thikama pombila. Omuselekadhi Elizabet okwa yakula omusi gwe eyakulo lyahugunina nohole oyindji. Oye okwe mu landele oshiketha shooR 80.00 nosho tuu oongala oombwanawa dha kotha R7.50.

Petrus Josef Kathindi okwa valwa eti-22 Aguste 1929 nokwa hulitha eti-9 Malitsa 1968. Ookume oyendji oyi ile okuthindikila omudhimba gwakuume kawo komawendo.

L. A. Kaupulua.

MOMUVALU 2153 O- MWA DJA ASHIKE 4

Ofy e ava twa li vane otwa kala moshongalele shetu shovalihongi veenhumwafo dOmbibeli mEngela, sha li sha tameka efiku eti-18.4. fiyo 18.5.68. Ofy e otwa kala eembangi moshongalele eshi okutala aish e oyo ya li ko iwa.

Elalakaneno lasho olo okuhumbata ONYIKA YOMWENE nokuyakula eemwenyo. Shimwe ashike nda hala oku shi ku lombwela osheshi: Nge to ka uda oshongalele sha tya ngaha tashi ifana, tondoka! Opo u litaleleko ove mwene. Oshongalele eshi osho shotete mongerki ei yetu. Otwa mona omayambeko a Kalunga nde otwa dimbuluka elaka laJesus eshi ta ti: Apa pe na vavali ile vatatu, naame mwene opo ndi li. Otwa li peleva taa. Omipepo devangeli tadi pepele shili dahanya shili kaanavee. Ngeno wa li ko ngeno naave mwene owe shi popya. Otwa pewa shihapu. Nande otwa li vane, ofye twa li twe mu kalela po ava mu li 2149.

Ohatu mu kundu amushe ava inamu uya mu li menongelo leenhumwafo. Nge oshiongalele eshi tashi ka ningwa vali, ino shaala ko vali, ila u tale. TONDOKA! Lesheni, Eps.100 neimbilo 455 membo lipe membo li kulu 455.

*Omuponhele woye,
Filippus A.Nakanwe.*

OMUNYASHA, XWAMA OKUYA KONGERKI

Ediladilo eli ole ya nge mokukala poyoongale yeendjovo daKalunga ile pomaudifo asha, pomaleshelo no-sho tuu. Luhapu ovakulupe ashike tava kala po. Omutanda ou li peni? Meekulu eshi ta kufa onhaili yaye ayuke komambo ita dulu kweenda, ove owa yuka peni? Eshi iho i kos-kola oho i peni?

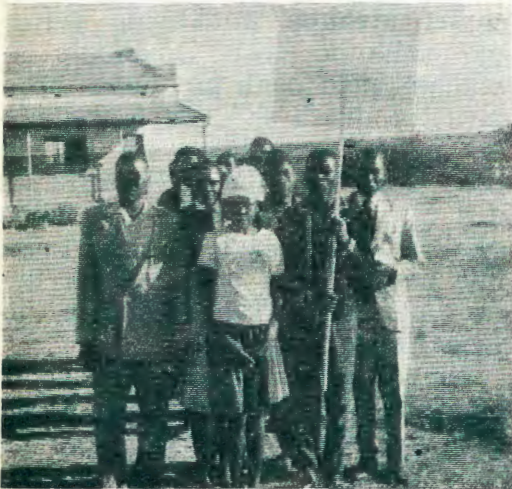
Ofye ovanyasha otwa kofa lela, omutondi a tula ounye momakipa etu, opo tu ha ude eendjovo daKalunga tu xupifwe. Ofye epipi latelelwa ohatu kwatele ngahelipi oshiwana komesho nge inatu lideulila ondjila yOmwene?

Omunhu nande ena omutanda uhapu meumbo nde otawu vele haultumbwa, itawu dulu kulitangelwa ndishi, kau na ekwafo.

Omumwamemenyasha, tu lifye ounyetu dulike kwaava tava ende va petama. Ndjunguka, xwama, katuka yuka tuu kongerki.

Ohai mu kundu amushe neimbi-
lo. 539. *Rebekka Shuudifonya,*

Engela Hospitaal.



Ovanyashauyelele mOutjo tava monika mefano. Exwamo lavo tali monika eshi ve likongela ebandela. Mefano li-mwe tamu monika meme Shivolo omukulukadi womwe-vangeliste. Ou a ninga omudali woshongalele.

KOVALONGI OVAKWETU MOWAMBO NOKOKAVANGO

Opu noshinima shimwe kombi-nga younona vofikola ngenge tava fiipo ofikola notava i koilonga kOushimba ile tava tembukile keefikola dikwao. Ounona va tya ngaha o-hava pula nee eembapila davo do-fikola kovalongi vavo vomeefikola omo vo va longwa mo. Meembapila edi ohamu hokololwa okukala kwomulongwa nhumbi a li mofikola osho yo kutya oku li mongudu onhingapi paife, ile okwa xulila pe-ni. Nomwa hokololwa yo omikalo daye nosho tuu. Ombapila ya tya ngaha ("Die getuigskrif") oya pu-mbiwa opo okaana ka dule oku-mona oilonga iwa ngenge ta ka i pomuhona wako ile apeshe tuu opo ta ka kongo oilonga ka mone oilon-ga iwa, osho yo tuu nongengete o-ke nokutwikila ofikola imwe nena ombapila ei oyo epukululo komu-longi keshe ta hangika mofikola tuu oyo.

Ope na nee oshinima shimwe osho tashi hepekifa ounona vetu ovo hava ende neembapila di li ngaho. Ovatambuli vounona ngee omoilonga ngee omeefikola luhapu inava hala okutambula ounona ava shaashi eembapila edi kadi na oihako yofikola ("Die skoolstemper") mu nedina lofikola omo omulongwa a longwa mo nde tapu tekenwa komukulunhu wofikola ("Die skoolhoof") Eembapila di li ngaha dihe noihako yofikola otadi monifa ounona oixuna unene apa mOushimba. Ovalongi vamwe tava yandje tuu eembapila odo di na eemenye da holomende yaSuidwes, ndele natango tuu eshi pehe noihako ei ("Die

skoolstemper") inashi wana. Vali ovalongi vamwe oha va yandje ashike eembapila keshe ngaa ngaashi ofolio omo a hokolola okukala kokaana a nyola nokuli ashike mOshiwambo ye ota yandje kokaana osho. Ovatambuli vounona ve neembapila di li ngaha ova limbililwa luhapu nohava ti eembapila edi oda toolwa ashike ile oda vakwa ashike kounona onghe ihadi ningi vali ekwafo shaashi inadi pamekwa no-shihako shofikola. Nande eembapila dihapu di li da nyolwa nawa-osihako shofikola tuu tashi pulwashi yandje ouyelele apa.

Ohatu ningi-nee ngahelipi apa ovakwetu? Enyamukulo olo eli: Ovakulunhu veefikola ("Die skoolhoofde") otava indilwa unene va humbate oshimhwiyu eshi va kongele eefikola davo oihako yeefikola opo ve i longife ngenge tava yandje eembapila domapopilo kovalongwa vavo apeshe. Ongaashi omaongalo aeshe e noihako yomaongalo nohai tulwa meembapila domaongalo osho yo eefikola tadi pumbwa oihako yado opo i longifwe ngaashi omaongalo taa longifa oihako yao. Nena ounona vetu itava pulwapulwa vali oixuna vo itava limbililwa vali apeshe ve nokutambulwa po, ongee omoilonga ile meefikola yo. Omapopilo a tya ngaha ngenge taa pewa ounona ve li mOwambo onawa ngaa nge taku longifwa Oshiwambo shaashi omOwambo, ndele ngenge ounona tava i koilonga kOushimba, nadi shangwe tu Afrikaans onawa eshi mwa hala nokuli oku shi ninga. *Omukweni,*
S.Hambili.

PULAKENENI AALESHI

KOngushe kOndangwa okuna iinima yoonkwatwa mboka yOswapo ya tokolelwa okukala mondholongo.

Iinima yawo oya tumwako. Omadhina gaatumina ogo ngaka:

1. Filemon Shivute,
2. Nakadila Datunga Utapi,
3. Nekando Eluu,
4. Beata Itula,
5. Johannes Hitika,
6. Stefanus Shimbande
7. Junias Indongo, Ukwangali
8. Amoni Ekandjo,
9. Shomeya Shaningua,
10. Gabriel Ampolo.

Ya lombweleni mboka mu ya shi ye yi ile ko. Omuyakuli.

Isak Henok,
S. A. Spoorweë, Ondangwa.

EHANGANO LEENGERKI MOUNYUNI

Oshoongalele shinene shehangano leengerki mounyuni, otashi ka ongala 4-20 Juli neudo muUppsala mu-Sweden. Osho oshoongalele shinene sheengerki domounyuni hashi ongala alushe konima yeedula nhanonaimwe ile nhanonambali. Eengerki di dule 300 dOvaprostande, Anglikani, Orthodox nOkatoli odi li mehanganoli.

Ovaenda ve dule 100 otava ka dja muAsia, ve dule 80 omuAfrika, ve dule 20 otava di muLatin Amerika. Vamwe 40 otava kala Ovaaustralia, fimbo Europa tali ka kalelwapo kovanhulu ve dule 300 naNoord Amerka 180.

Exuku loshoongalele eshi oshitine otali kala: Tala, aishe ohandi iningi ipe, nde otashi fatululilwa ovaenda 2,250 ovawiliki ovakriste tava di mounyuni aushe mongerki inini muUppsala. Omuudifi okwa li ngeno Dr. Martin Luther King, nde pefimbo eli inapa shiivika manga olyelye ta ka udifa ponhele yaye.

OMUKULUNHUTUMWA MUPE

Omuhongi MIKKO IHÄMAKI, oye paife omukulunhutumwa mupe mOwambo ponhele yomushamane Arvo Eirola ou a ya muSoomi. Omushamane Ihamäki oku li paife mongulu yetumo mOniipa neumbo laye nde ota longo oshilonga shaye. Ohatu mu halele omholo iwa mukukala moshilonga shaye shinene.

Tate Ihamäki ota shiivika nawa mOwambo. Modula 1961 eshi e lihonga omalaka muSuid-Afrika, okwa kala kOshigambo. Opo okwa kala omukulunhu wofikola mOnguediva nde a hongana nokupitifa Ovawambo vahapu ve li moilonga yongerki nopamwe pelili. Eshi a kala nale mOwambo oye oshilyo shepangelongerki nde a kala yo omuponhele omukulunhutumwa. Paife eshi a aluka muSoomi neudo, a kala mOngandjera nde a yakula mukuhonga kwinya oskola. Ote mu kundile po.

OMUSHINGISHIHAUTO A NYEKWA

Okwa kundanwa vali kutya: Omushingi woshihauto shomufi Robert Kennedy, a li moilonga yokuyakula ovo vomoshuumbo shanakufya eetundi 24, okwa hangwa keembudi ohaluka. Ode mu vunyauna nde ode mu nyeka.

ETALELOPO MEPYA LYETUMO ONYUULAYE

Aagundjuku yamwe yomagongalo gamwe mOshitayingerki shOndonga, pamwe naatumwa wo yamwe, oya li ya talele po Aanyulaye (Epya lyetumo muuzilo wOndonga). Otwa thikama pOniipa 27.4.68 komatango. Omusitagongalo H.Nakamhela e tu laleke negalikano. Atuhe otwi igandja mOmuwa tu tale shoka te tu ningile pahalo lye. Twa yi nondjila yetu nokwiimba omaimbilo gehambebele. Oshihauto sha tsimike ontsi shuukilila uuzilo. Inapu kalwa nokuli, ongulohi yesiku olyo tuu ndyoka pethimbo ando aantusho taa longekidha omaulalelo otwa thika mOnyuulaye. Otwa yungu ontanda yetu e ta tu tema omulilo.

Ongulohi oyo tuu ndyoka otwa ningi ohungi pamwe nAayeleele osho wo Aayamba. Omusitagongalo T.Ngula, ngoka a yile wo pamwe natse, a tamekitha ohungi negalikano nokwa kundu Aayeleele nAayamba. Aagundjuka oya mono wo ompito oku popitha Aayeleele naayehe mboka ya li ya gongala. Aagundjuka oya li yi imbi nokuhokola nuupenda, omawi gawo ga ngwelengendja gafomankuma moshiheke shaNyuulaye. Oomwenyo dhAayeleele odha li dha egulukila okutaamba nokuuva shoka Aagundjuka ye shi ya ningile. Konima yohungi, otwa ka lala opo omalutu ga vululukwe po. Ongula onene yesiku lya landula, otwa piti tatwiikutha manga uutalala nokapyu(otee) lwopotundi ontimugoyi yongula. Otwa ningilwa otundimbimbeli komuyevangeliste gwokOnayena (Malima Kamushila). Twi imbi 525, pwa leshwa Rom.12:10-12. M.Kamushila a kwatele komeho megalikano. Lwopotundi ontimulongo yongula twa yi manga tu ka longekidhe iikulya, opo twi imonene ongalamwathi yaShiteni ya kwatith' elenga. J.Sakaria a kwatele komeho mukulongekidha opo iinima yi ende nawa.

Mwene gwomukunda gwOnyuulaye okwe tu pe oshikombo othona onene, osho wo omusamane gumwe omushiinda shamwene gwomukunda okwe tu pe ishewe oshikombo, opo tu mone onyama ya gwanawa. Konima yokulya omwiha, otwa ningilwa elongelokalunga pamwe nAayeleele ya li ye thike 32. Konima yelongelokalunga twa tsikile noshituthi shetu. Aagundjuka

aapeha yomagongalo ngoka ga li po, ya eta omakundo ga zi komagongalo gawo. Omaimbilo ga li ga imbwa, oga ngelengendja nawa noomwenyo odha li dhe eguluka okupulakena oondjimbo dhehupitho. Tse atuhe twa li moshituthi shika, otwa li twa paluthwa nawa koomwenyo. Omuyevangeliste Sakaria Nantanga, ngoka ta longo mOnyuulaye, okwa pandula peha lyAanyuulaye ayehe omolwa uuyamba mbuka ye u etelwa woohapu dhaKalunga. Okwa pandula wo omagongalo ngoka ga li ga tumu agundjuka yago okulonga oshilonga shetumo mAanyuulaye. Okwa popi wo noluhodhi kutya, Aanyuulaye oye na aanona oyendji 89, ihe otaa ligamene owala mpoka tapu ya zile woo tuu omulongi. Kaye na omulongi oyo ayeke. Okwa gandja ekundo komagongalo Rom.10:12-16. Konima yekundo ndika opwa ningwa omalalekathano. Twa paathana omake nookuume ayehe ya li ya gongala pOnyuulaye. Nokonima otwa yi ihe mela lyondjila oku shuna kOniipa nookuume yalwe- okomagumbo gawo. Omaligolo nomahambebele ogali gu udha moomwenyo dhetu sho twa li twa mono ompito yokutalela po Onyuulaye. Otandi hambelele Kalunga sho a li e tu humbata noku tu wilika oku ya kOnyuulaye sigo oku tu galula nawa. Shika osha ningwa molwesilohenda lyaTate Kalunga nomolwelongekidho lye.

Omadhiladhilo gandje onkene taga yuulukwa aamwameme ye li mOnyuulaye. Oyo ye li moluhepo shili lwokomwenyo oshowo lwokomalutu. Kaye na omulongi yo ka ye nomupangi. Ongulohi sho twa thiki pOniipa, otwa thindikile Aayeleele yamwe koshipangelo kOnandjokwe, mboka twa li twe etelele taapumbwa ekwatho lyomundohotola. Moshipangelo otwi imbi ondjimbo yehambebele notwa halakana ihe.

Peha lyongundu, Jeremia Sakaria.

ASHIKOTO OKWA YA KUWELWITSCHIA

Omukwaniilwa gwOndonga nale Martin Ashikoto, ngoka a kondwamo moshilongo nokwa kala muukwatwa moreservate yaNeuhoff, ngaashingeyi okwa lundululilwa kuWelwitschia kOutjo oko a kale. Osha ningwa oshoka ehala ndyoka a kala tango, ooyene oya tembudhilwa lwokOutjo.

OUNYUNI OTAU TONGO SHIKE



EWI

LYEVANGELI

MORADIO

Owandaha
Rev. J. Nghilundi-
Iwa

Oshivilo

sheshasho lovayebele

kuKongo: Omubisofi Dr.L.Auala



KENNEDY WAAME- RIKA OKWA FYA



Nakufya Robert Kennedy

Okwa kundanwa meeradio nomoi-fo kutya, **SENATOR ROBERT KENNEDY**, ondenge yanakufya presidende Kennedy, okwa fila moshihakulilo shedina Good Samaritan shovakatoli muLos Angeles. Okwa yashwa moineya komunhu umwe nondjebo noholo oya nyonauna ouluvi waye.

Elaka la tandavela akushe mounyuni nokeembinga neembinga kwa dja omalaka omauditonghenda molwoshiponga eshi. Konima yefimbo lixupi eshi oondohotola va kondjela omwenyo waye noku mu tanda noku mu kwafa, kwa udika vali kutya, Kennedy a xulifa oweenda waye. Omukulukadi waye novakwadimo laye opo va li.

Omudimba wanakufya owa ku-fwa nodila kuLos Angeles nde owa twalwa kuNew York.

Ou e mu dipa okwa kwatwa nde okwa teelela etokolo. Omudipai edina laye okwa tiwa olo Sirhan Sirhan. Omudipai okwa tiwa oye Omujordani weedula 24 nde okwa kala muJerusalem.

Esiku lyotango lyaDesemba momumvo 1967, mongerki yomEngela omwa ningwa oshituthiyapulo shaadiakoni yotango. Mpaka otatu ya mono mefano pamwe nomumbisofi Dr.L.Auala, nomukuluntutumwa A. Eirola nomutonatelishitai J.Amakutuwa, nomusita gwagundjuka K.Dumeni naalongi yawo yatatu. Momukweyo gwtotango pombanda okuza kolumoho wuuka kolulyo:

Omukuluntu gwenongelo V.Simjoki, aadiakoni: Nikodemus Ngula, Paulus Shidiue, Frans Amunjela, Likus Neumbo, Erasmus Upindi, Daniel Imalwa, Naftali Lihongo, Paulus Shihepo naNatanael Mwafufja. Omukweyo gwopokati okuza kolumoho wuuka kolulyo:

Omusita gwagundjuka K.Dumeni omukuluntutumwa A.Eirola, aadiakoni Paulus Isak, Abed Ashipala, Maria Heita, Auguste Johannes, Menete Hangala, Sara Namukuwa, Kristina Kamkoto, Selma Nghifenwa, Festus Hafuda, Gauna Kamati, Matias Nepela, Kristina Teofilus, omulongi I-rja Repo, Elifas Kaukolwa nomumbisofi. Omukweyo gwopevi okuza kolumoho wuuka kolulyo: Omulongi J.Mufeti nomutonatelishitai J.Amakutuwa, aadiakonisa Maria Kaveto, Uilika Sakarias, Aili Absalomo, Monika Filippus, Trifaina Velikoshi, Eila Siuze, Tusnelde Munjeku, Hilma Nikodemus naRauna Kristian.

Mongundu ndjika omu na aadiakonisa 17 aakadhona mboka ya longwa oomvula ne, omu na wo aasamane 14 aevangeliste nale, oya longwa oomvula mbali uudiakoni. Ayehe mbaka oya pita ekonakono lyuudiakoni, noya pewa onzapo yawo (diakensertifikaat.) Oye li ngashingeyi momagongalo taa longo oshilonga shaKalunga uudiakoni.

“OMBILI,” XE YO- MUDIPAI A TI

Taiyeba (Israel Occupied Jordan). Nehaluko netilo xe yomulume-nhu ou a dipaa Sen. Robert Kennedy okwe lipatela meumbo laye eshi a uda oshiningwanima osho. Okwa ingida mekende longulu a ti: “Ombili, onda tekula ounona vange va kale ngeno ovanhu vawa. Onda eta unene onghenda. Onda tekula ounona vange ngaashi hai dulu va kale ngeno tava tila Kalunga, onda eta onghenda molwasho sha ningwa.”

OMUBISHOFI MIZE A MONA ELOMBWELO

Omubishofi Robert Mize wongerki yaAnglikani -mOvenduka, okwa mona eshiivifilo lepangelo kutya, ita dulu vali okukalelela muSuidwes.

OKUTWIKWA EPUNGA MOMUNHU

EDINBURG.—Moshihakulilo shomoshilando Edinberg omwa tandwa omunhu a tulwa epunga limwe. Omunhu ou vati oku li nawa neveluko laye otali ehene nawa komesho.



A.J. Haileka

ESIKU LYOSHITUTHI SHOREPAPLIKA MONDANGWA

Osha dhanwa eti- 31.6.68. Dr. Olivier gwOshakati oye a tamekitha oshituthi noshipopwiwa.

Opo twa talithwa oondhila tadhi tuka iikuko. Odha tuka dhu uka mombandambanda, dhu uka pevi nopwa li shili enkete. Esiku ndyoka otwa talele kuume. Otwa fatululilwa wo komutoloki, tu ndhindhilike oonkondo dhepangelo naashoka tali vulu okuninga ngele pwe ya iita. Ta, oondhila odha nyanda mani ndho.

Aantu oyendjiyendji oya li ya gongala mokapale koonkhila pOndangwa. Pwa li iihauto oyindji, oombaskela naatiligane oyendji. Waa li ko ino tala. T. Amoomo.



Ovamati Ovawambo muLuderitz ove hole oshoongalele shavo, otava monika mefano.

ETILOKALUNGA

Etilokalunga ole tu yukilila ofye ovanyasha tali ti: Tuha dimbweni po ehalo laye liyapuki, tuli tuviki- leni meni meemwenyo detu, fye tu efeni ashishe osho shi li po shii, no- tashi nyono po etilokalunga meni meemwenyo detu.

Hano ovanyasha vakwetu ngenge hatu lidiladilile keshe tu opo tulipo, nakeshe tu osho hatu shi longo, tu dhimbulukweni alushe Kalunga Tate womeulu. Oye oku tu wete, osheshi oye ha kala apeshepeshe no- ta tale alushe meni meemwenyo de- tu yo. Hano ngenge ohatu longo ouwa natu diladile alushe ouwa wa Kalunga, nongengetu udite nani twafa hatu longo owi natu dimbu- lukweni alushe oipango yaye iya- puki fye tuhaluke nokukakama, eli olo ne etilokalunga la wapala mo- munyasha.

Etilokalunga olo tu na oku mu tila kali shi etilo lina oumbada ngaa- shi hatu mono ovapika tava tila eedimbo doovene vavo, ahowe. O- fye otuna okumutula netilo liwa la wapala, osheshi oye elipo Tate ye- tu shili fye otuli po ovanyasha va- ye ovaholike. Onghe meendjovo da- ye taku tiwa: Etilokalunga olo o- shinima shotete komesho yoinima aische. Hano ovanyasha vakwetu a- tusheni ngengetu litungile momuka- ngha weindilo eli fye tu tyeni:

Omwene Okwoove hatu lyaame,
Twa mwena twe limwenenena.
Eudaneko loye ola kola,
Ovalunde oto tu xupifa,
Momapando eflyo omu tu li mo.
Omwene tu mangelula tu ndje mo
Ekwafo loye otwa teelega,
Omwene tu kwafa.

A. J. Haileka.

OMWA VUKA OKUYAKA

N. Pinehas Itamaro, Ongenga, O- kaku, ote tu nyolele ngeyi: Otandi kumagidha Aawambo amuhe yo- mOwambo, oshoka omwa vuka o- kuyaka.

Onda yakelwa ombaskela yandje, opo nde yi landa. Oya yakelwa po- mbelewa yokaholo Oluno mOwa- mbo, nde yi landa mOndjondjo eti- 22.12.67. Oya yakwa eti- 5.2.68. O- nda kwatwa koluhodhi olunene.

Aamwameme, oshipango oshitihe- yali otashi tu kumagidha kutya: Twaa yake po iimaliwa yomuntu nenge eliko lye kehe. Tu pange- lweni kiipango yaKalunga mbyoka twa pewa. Eps. 139:23-24.

KATUTULA MUKULU WAVENDUKA

Ngaashi nale nosho yo paife okwa popiwa kutya, olukanda olo likulu laWenduka otali ka hanaunwa po muAguste neudo. Oshinima osho osha dja efimbo tashi kundafanwa.

OMHEPO YOSHIPONGA

LITTLE ROCK.- Ovanhu ve du- le 70 ova fya nomafele ova ehame- kwa, eshi ompepo yoshikungulu ya pepa moitukulwa youninginino wa- Amerika omafiku aa.

EPANDULO KAAHINGI YIIHAUTO

Lwaali lutatu nda yi nonda ga- luka. Inandi za nando olyo epeni mondjato yandje. Otandi pandula unene one aahingi yihauto, sho hamu faalele aanaskola koombinga noombinga, unene kUuninginino o- kuza mOndonga.

Aaholike inamu vulwa okukwa- tha aanaskola naakwanaluhepo ya- lwe wo. Kalunga ote tu kumagi- dha sho ta ti: Inamu vulwa oku- ningilathana uuwanawa. Nando pe- na omaudhigu niiponga ye mu dhi- ngilila. Otandi mu halele eyambe- ko lyaKalunga oonkondo, uuladhi nomukumo mokulonga iilonga yeni.

Isak J. Shoomba.

“OMUKWETU” oha zi mOniipa.- Omukuluntu gwoshifo/ Hoofredakteur: Omumbisofi Dr. Leonard Auala, amushanga gwoshi- fo/ Redakteur: Leonard M. Shemuvalula, Oniipa, Pk. Ondangwa.- Ondando komumvo mOwambo 60c, mUushimba nOkava- ngo 80c. Oofuto nomambestelo naga tumwe kOmukwetu, Oniipa, Pk. Ondangwa- Ovamboland. Moka hashi nyanyangidhwa: FINSE SENDINGDRUKKERY, ONIIPA, OVAMBOLAND, S.W.A.