

OMUKWETU



Oshifo shOngerki onkwaevangeli paLuther yomOwambokavango/Die Tydskrif van die Evangeliese Lutherse Ovambokavango Kerk

No. 24

DESEMBA

1967

OMWA VALELWA JESUS KRISTUS OMUKULILI



ONDJOVO OYA NINGA OLUTU NDELE OYA KALA MOKATI KETU

Pehovelo okwa li ku nOndjovo, nOndjovo oya li puKalunga naKalunga mwene oye Ondjovo ei. Oyo ya li pehovelo puKalunga. Oinima aishe oya shitwa kuye, ndele kape na nande oshinima shimwe sha shitwa, nenge inashi shitwa kuyo.

Muyo omwa li omwenyo nomwenyo ou owa li ouyelele wovanhu. Ouyelele ou ohau minikile momilaulu nomulaulu kau u dule eenhono

Ondjovo oya ninga olutu nde tai kala mokati ketu. Fye otwa mona oshinge shayo, oshinge ngaashi shomona ewifa waXe, e yadi onghenda noshili. Joh. 1:1-14.

ONE MWA VALELWA LWA OMUKULILI

1. Aanene naashona amuhe mu ye,
KuBetlehem otse atuhe tu ye,
Elago enene lya ningilwamo,
Kalunga ngu Tate e li tumineko.
2. Taleni mu tale metemba olye?
OJesus ommona oshili oye,
Ileni mu kunde kanona tuu nka,
Ka zile megulu, kutseni ke ya.
3. Tu tseni oongolo, tu mu simaneke,
Ongaashi aasita tu mu hambelele,
Epopilo lyetu lyehambelelo,
KuTate megulu li uvike wo.
4. Otwe ya kungoye, Omumangululi,
Twa hala u taambe oomwenyo wo ndhi,
Tu sila ohenda tu opaleka wo,
Tu ninge aayuki nga ngoye ngu wo.



MOKRISMESA, TU HAMBELELENI KALUNGA KETU

TU HAMBELELENI NOKUHIKA OMANKUMA PS.150:3.

(Ekundo lyOkrismesa nOmuvo Omupe)

Aamwamemene amuhe mOwambo nosho mUushimba, naamuhe mu hole ompango yOmuwa nowa hala oku yi gwanitha nuusiku nomutenya, taambeni ekundo ndika lyePsalmi 150:3: MU "HAMBELELENI NOKUHIKA OMANKUMA."

Mokudhana oshituthi shevalo lyOmukulili gwetu Jesus Kristus, nomokudhiladhila ehala lyaTate Kalunga lyoku tu hupitha, nomwa dhimbulukwa eenditho lye sho e tu enditha momumvo nguka aguhe, otu na ashike okuhambelela Kalunga. Ihe twa tseya, iilonga ye iinene e tu longele, katu vulu oku yi tumbula niitya newi lyetu, oshoka ewi lyetu efupi niitya yetu oyo-wala.

Shila tu kuthe omankuma ngoka ge nomawi omale ge vule getu, ge tu kwathele mokuhambelela edhina lyaKalunga ketu. Unene ote dhiladhila omankuma gomoomwenyo dhetu, ogo ehala neuvito lyetu, ogo edhimopo yoondjo ngele twe li makele, ogo e-

ELAKA LOKRISMESA MOWAMBOKAVANGO

Meefuka, momakove, momaumbo, momapya, meehambo, meekamba, meefitola, meembelewa nomeenhele adishe domOwambokavango, omo omunhu ta kala, nosho muSuidwes alishe nomounyuni aushe, elaka lOkrismesa otali fikifwa mo koyaudifi, koshifo, kOmhepo Iyapuki nokeendjovo dOmbibeli tu i kwete mokati ketu tali ti: Onena tuu eli omwa dalelwa Omukulili. Ove naanaa ngaashi u li, nomanganga oye, noineya yoye, noumbudi woye, noipupulu yoye, oulunga nou-pote woye, okutukana kwoye nokuvaka, uda elaka eli: OWA DALELWA OMUKULILI. Okwa hala e tu mangu-lule moipwe oyo aishe. Okwe uya e tu kulile mo meti nomepando lomutondi. Okwe tu longela ondjila yokufika mekwatafano naTate Kalunga. Okwa hala okudimapo amatimba etu aeshe. Okwa hala oku tu twala momwenyo waalushe.

hwamo lyokudhama Kalunga ketu nokulonga oshilongayakulo noshilongatumo maapagani nomaasindjala, maaposi niilema, maavu nomoonkwatwa, ngele twe mu makele Oye omutoye. Mbika oyo nayi ninge omankuma getu golela okuhambelela Kalunga. Opo ihe tatu gwedha ko omankuma ga longwa miitenda noondjimbo oondjapuki no-maindilo kumwe nomapandulo.

Elaka: "OMWA VALELWA OMUKULILI" lya uvithwa komuyengeli, otatu li pandula oshoka: Jesus Kristus nguka twa valelwa, Omukulili gwetu, okwa hala e tu mangu-lule muumbudhi wetu, miifundja yetu, miineya yetu, mokuyaka kwetu, muupote wetu, mokahalu keliko ketu, mokusheka kwetu, moluhondelo lwetu, miidhila yetu, mondumbo yetu, muutsini nomuuluya wetu, muunkolwi nomoontamana nomiikwawo oyindji. Oyo mbyoka hatu yono sho tu li momagumbo getu, momalukanda, miipondoka, mookefe noohotela, moondanisa, nomookonsert, miilonga yesiku kehe mokukalamwenyo kwetu. Elaka: OMWA VALELWA OMUKULILI nali ninge ongomuti tagu tu panga iilalo ayihe mbika yuulunde, ngaashi twe yi dhengwa komutondi nomomumvo nguka tagu hulu 1967.

Elaka: OMWA VALELWA OMUKULILI nali tu thindikile mOmu-mvo Omupe wo. Nali tu yapule oondunge nokukala kwetu sigo tatu adha oshilongo shegulu.

Amushanga gwOmukwetu
L. M. Shemuvalula

OTO PANDULA TUU?

Kape na ngoka ta taamba omagano noita pandula a tye 'Tangi'. Oku nokupandula omuntu ngoka e mu pe omagano. Ota tseyithile wo ooyakwa-wo menyanyu shoka a pewa.

Shika otashi ti shike kutse aakriste? Otashi ti otu nokutya 'Tangi' kuKalunga molwasho okwe tu tumine Omwana omagano a hepekwe nokuse molwoondjo dhetu.

Omukriste na gandje ashike epandulo kuKalunga? Aawe. Oshinakugwanithwa shomukriste haku gandja epandulo ashike, ihe okutseyithila aantu yalwe enyanyu ndyoka e li mono mu-Kristus noya tseye oyo wo otaa mangu-lulwa.

Omolwasho ohole yomukriste okuhola Kristus oyo ndjoka nge ta longo ngaashi a lombwelwa: "Indeni nuuyuni auhe, ningeni ayehe aalongwa yandje, ya shasheleni medhina lyaHe, lyOmwana nOmbepo Ondjapuki."



Onyothi yokegulu nale Ya wilike aakoneki Oombo ya zi kuuzilo pale, Ye ya, ya kongo Omukulili. Yo ye ya oku mu pandula, Molwetu sho kwa yile mpa.

Ohenda yoy' yi yelithila Oombo yomomilema wo, Namboka wo ya pukilila Ya mone shili ehupitho. Opo apehe, aakoneki, Oye ku konge, Mukulili.

U hanagule po omilema Noonkondo ndhi dha satana Omulilo gwoye temenena, Oomwenyo dhaantu yelitha. Ayehe ye ku pandule, Ongoye sho we ya kutse.

OTWA VALELWA JESUS IMMANUEL

Mat. 1:18-24.



Natu mu tsileni oongolo, Jesus omukwaniilwa.

Okrimesa noyoonumvo otayi tu uvithile: Otwa valelwa JESUS. Edhina ndika JESUS momalaka agehe osho li li ngaaka kali shi kulundululwa. Ngaashi edhina itaali lunduluka, osho noshikalimo shalyo itashi lunduluka. Edhina ndika olya lukwa megulu. "Oye ta ka vala okamati eto ka luku JESUS," omuyengeli osho a ti.

JESUS otali ti: OMUHUPITHI. Tashi ti: otwa valelwa ngoka e na oonkondo okuhupitha. Ta hupitha meso, ta aludha, ta sohenda, ta yapula eta dhimi po oondjo dhuuyuni. "Oshoka oye ta hupitha oshigwana." Oshitya shika "ehupitho" nenge "Omuhupithi" osho Evangelii. Tashi ti JESUS oye oonkondo dhaKalunga okukupitha. Jesus oye e na ashike shoka tashi pumbiwa mehupitho pambepe nopalutu wo. Otwa valelwa JESUS, twa pewa oonkondo dha zi kuKalunga oku tu hupitha.

JESUS ta hupitha moondjo. "Oye ta hupitha oshigwana moondjo dhasho." Kevalo otse atuhe aanandjo: "oshoka ayehe oya yono nokaa neyadhimo lyaKalunga" Rom 3:23. Atuhe osho twa tya ngaaka. Aataguluki yipango, aapuki naalunde, aakaaneitaalo hela twa za. Tu li momupya twaa na elago. Ohaluka momilema muusiku Uuyapuki mwa igidhwa: "Mwa valelwa Omukulili!" Omupya gwa shitunga elago. Atuhe mboka twa li twa

tya ngaaka oonkondo dhaKalunga dhe tu longele iikumitha. Muuyuni mbuka omulunde ta igidhilwa kungoka e na oonkondo okuhupitha. "Eitaalo lyoye lye ku hupitha, inda nombili."

MOKrimesa ndjika wo dhiladhila oonkondo ndhika ngele odhe ku kutha mo tuu. Ngaashi edhina ndika li vule edhina kehe lyo ihali lunduluka nenge okushunduka, osho noonkondo muJESUS odhi li mo aluhe itadhi lunduluka. Ngele otse mboka twa kuthwa mo meso, otwa nyanyukwa notwa hala okuuya aluhe. "OMWA VALELWA JESUS-IMMANUEL"

Ihe ngele omutaaguluki, omuandjo we dhi humbata sigo onena ndjika nou li ngaaka momupya, oto uvithilwa JESUS IMMANUEL e na oonkondo e ku hupithe. Sigo onena oonkondo ndhika otadhi hupitha muulunde nomepangelo lyawo. "Kamu li we koho yompango aawe, okohi yesilohenda" Rom.6:14.

Oye IMMANUEL ndyoka tali ti: Kalunga pamwe natse. "Ota kala pamwe natse omasiku agehe: Omuuwanawa nenge muudhigu ita zi po putse. Mat.28:20. Ngele tatu ende miifundja, momakoto, muufudhime nokuholeka oondjo, dhimbulukwa aluhe Immanuel kutya, Kalunga e li putse ota tseya wo ayihe nomoohapu dhe ta ti: Kehe ngoka ta tumbula edhina lyOmuwa, na ethe uulunde."

Evangelii lyaKrimesa otali tsu oondjendi omukumo, oshoka Omuwa ngoka e na oonkondo okuhupithamo oku li pamwe natse. Pamwe wu uvu, oluhepo nuudhigu we ku tilitha. Pamwe wa tondwa nenge to hepekwa. Ou na uudhigu tau ku kama? Owa vulwa mekondjo lyoye? pulakena: "Otwa valelwa JESUS-IMMANUEL" Omukanka nguka ogwa kola: "Omuwa e ya shi mboka ye."

Tala komimvo dha pita, dhiladhila iiningwanima yadho. Oto zimine ndishi oshili ndjika: JESUS a hupitha na Kalunga a kala pamwe natse. Osho shika tashi tu pe wo omukumo okutameka ongele omakondjo ngoka gopambepo nenge palutu momumvo 1968. Oshoka otwa thikama meitaalo ndika: OTWA VALELWA JESUS-IMMANUEL, tashi ti oonkondo dhaKalunga dhokuhupitha ndje odhi li pamwe nangame sigo aluhe.

Kleopas Dumeni.



Fatululileni aanona Okrimesa.



Aanongo yokuuzilo oyi itula mondjila ya ka konge Jesus okanona. Inda wo mondjila, thiga po uupyakadhi woye u ke mu konge wo.

EDALO LAJESUS LA ETA SHIKE

Edalo laJesus Kristus ola eta eko-ndjo pokati komilaulu nouyelele. Osho sha kala nale momilaulu, paife eshi okudja mo. Omunhu mokuhola omulaulu oku nokululuma nde e nokutokoka ko koulunde. Oku nokupapuduka nokutambula oupe womuJesus Kristus. Omapando oo a manga nale omunhu, oku nokutokokapo. Omunhu e nokuliyandja kuJesus medimepo lomatimba, ngenge a hala okudana shili oshivilo shOkrismesa. Oku noku shi ninga, osheshi oikulu oya xula po noipe oya hoka. Kalunga okwa talela po ovana, okwe va etela emanguluko nomudo woshishipo. Omatimba inaa hokololwa oku nokuhokololwa nokweefwa. Omu nokudalululwa, osho Nikodemus a lombwelwa.



1. TALA, KRISTUS E KU YA, HAMBAYA YOYE, MWENYO, WANGE, TYA: ONDE KU YEULULA, ILA MWAAME, HAMBAYANGE, OMUNHU WOY' ONGHENDA FYA, ONDE KU LIYANDJELA.

2. ILA OU, WA DALA NGE ONE-SHASHONGHENDA LOYE, ILA, HEKELEKE NGE NEVANGELIMBILI LOYE. OVE MWENE OU WA TYA, HAMBAYANGE, OTO YA.

3. ILA, KRISTUS, KOMBA MO MENI LANGE, TA MOULUNDE. SHITWE YOYE ETA MO. EI YA NYONWA MO KOULUNDE. ILA, SHITULULE NGE ONOHONDE YOYE NE.

4. ILA, TU POUVALELO, FYE TU MONE EENGHONO DOYE, U TU PE EYOMBAMO, FYE TU END' ONDJILA YOYE, ILA, JESUS, NANGALA MWE-NYO WANGE, PANGELA.



Kala olamba momudo 1968.

EKUNDO LYOKRISME- SA NOLYOMUMVO OMUPE



Okrimesa oyaanona wo. Jesus nguka avalelwa memba lyokulila iimuna, oye okuume kaanona. Okwa hala okumangulula aanona wo kuutsini wawo nokokwaa-vulika kaakuluntu yawo. Okwa hala eya pe oshilongo shaaluhe, ya kale aluhe mekolo lye. Okwa tumbula nonale a ti: Etheni uunona nau ye kungame, inamu u keelela, oshoka oshilongo shegulu oshangambuka.

OSHIWANA SHOKOMONGULA

Modula 1599 opa holokele vati omhangoskola okupukulula ovalongi vefimbo linya. "Ratio Studiorum" omo twa kufa fiyo onena "Methodiek van Onderwys" Tashi ti etameko la li li na oshisho nounona, nova li vatalwa ngaashi oshiwana shokomongula. Omuprofeti ta ti: Oshiwana shange tashi tekapo, omolwoku hena eendunge."

Eendunge dokanona moskola tadi yandjelwa oikandjomwenyo ihapu: (a) Etilokalunga tali di momulongi, mokulonga nomomikalo diwa domulongi otadi di yo meumbo liwa li na ovakulunhu ovalineekelwa. Mboli nakudala nanakutekula keshe naye omulongi polwaye. Epupi liwa otali pumbiwa. Oolyelye ovo hava danauka nokaana kange? Ounona vamwe nande omulongi oku fude nawa te ya neenghono djepe, italundululako sha. Ashike itatu fi ounye, osheshi oshilonga shetu apa oshokafimbo.

(b) Eendunge dokulongifa moilonga yetu ngaashi: Omayele, omakeko, Ouxwenge, eenghenga, ouladi neyakulo okuyakula oshiwana nonghenda, oukaume, noshotuu, ohatu i pumbwa alushe. Tu indileni tu pewe eendunge da dja pombamba.

I. D. Hamunjela.

EMBO LOILONGA PALANDULAFANO "LEERPLAN"

Embo eli ola eta ashike oyonghedi odo di na okulandulwa melongo. Omulongi oku na okutokola mwene kutya oshike ena okulonga.

Omulongi umwe okwa pulile kutya: Oshike oipango ihai longwa vali meeskola doshiwana. Ohandi nyamukula yo apa kutya, inashi keelelwa okulonga oipango moskola. Shaashi ngenge onde lilongekida okulonga sha kuAdam, Abraham, Moses, Etembu muEgipiti, otashi ti oipango ku na apa to yi ende inoi longwa. Ashike elipopilo shapu li li apa kutya, ou ta longo oipango, naye mwene oku na okuteelelwa e i wanife. Sho inashi kwafa sha ne shaashi pefimbo letameko leeskola dovaprotestante muEuropa, opali ekulutumbulo olo "Ad Majorem Dei Gloriam" ile "everything to the greater glory of God."

Ombibeli tai ti: Ashishe osho tamu ningi mokupopya ile mokulonga, shi ningeni medina lomwene.

Okafimbo kaxupi koilonga tu na yo okweetela onunona onghenda. Nge taku longwa sha, natu tye oushitwe "Natuurstudie" ile shimwe shomoilongwa, oshi na okuulikwa. Musho namu ulikwe Eenghono noikumwifalonga yaKalunga.

Otse aanyanyangidhi atuhe pamwe naayakuli mOstora yOmambo nosho tuu aawiyauki ayehe miilonga yiinyolwa yomambo nenge yiifo yongerki, otatu kundile po ookuume ayehe twa longelekumwe nayo omumvo nguka notwa yakulathana miilonga pamwe yokunya-nyangidhilwa sha nenge okwiindjipalekitha oombapila dhasha. Nosho tuu okunyaanyangidha omambo gontumba nomwe ga landa po ishewe. Otatu mu halele enyanyu lyOkrimesa neyambeko lyOmumvo Omupe, 1868, tali zi kombanda kuTate nokuHe yaayehe nomatumbulo nga:

"Omuwa Kalunga kiIsrael na simanekwe, oshoka eya okutala aantu ye, nokwe ya longele ekulilo. Nokwe tu tumbile olwiinga lwehupitho omegumbo lyaDavid omuntu gwe-ngaashi a lombwelitha omakana gaaprofeti omuuyuni wonale. Okutu hupitha maatondi yetu nomiikaha yaayehe mboka ye tu tonde, A monithile ootate olukeno, ye a dhimbulukwe ehangano lye eyapuki, egano ndyoka e li ganene tate yetu Abraham, etu pe eha sho twa hupithwa miikaha yaatondi yetu oku mu longela twaa nuumbanda omuuyuki nomuuyapuki koshipala she omasiku agehe."

Ehambelero ndika olyo ekundo lyetu kune amuhe mOkrimesa nomOmumvo omupe, 1968, twe gu tegeleleni.

MOSES AMKONGO.

Medhina lyOshinyanyangidho

OKAFIMBO KOILONGA OKAXUPI

Ovalongi vakwetu, inatu lolokeni, osheshi okafimbo koilonga yetweni okaxupilela. Okafimbo kaxupilela okudja kefudo omudo wa ya. Paife twa fikama vali peengaba okuya mefudo li kwao. Ohandi halele ovalongi ovaholike amushe efudepo netulumuko li na elao.

Mefudo tu di mbulukweni yo ouxupiwefimbo. Kutya, okanona mongudu oke na okukala mo omudo umwe auke. Ngenge oka dopa, otu wete ngaho kutya okanona ka tya ngaho okashunwa konima omudo umwe, na itau ka alukile vali mokukalamwenyo kwako. Hano mefudo omulongi keshe ngeno okweende ngaa ta ongele nomadiladilo oinakuwanifwa yaye. Opo eshi Oskola tai ya okutameka Kalunga ngenge a hala, ohatu hoveloni ashike okutula peenhele oinakuwanifwa yetu "Optrek van Skemas."

Tashi ti omulongi keshe eshi e li mefudo, ngeno oku na ashike oshisho shokaana ta ka katameka mOmudo Mupe kutya, ote ke ka fikifa tuu kongudu oyo kateelelwa ko.

HOSIANA, TE YA MEDHINA LYOMUWA

Hosiana, Hosiana, Hosiana, Hosiana,
 Hosiana Jesus Kristus, Na hambelelwe ngu,
 Omuna gwaDavid nguka, te ya medhina lyOmuwa.
 Hosiana Jesus Kristus, Na hambelelwe ngu,
 Omuna gwaDavid nguka, te ya medhina lyOmuwa.
 -Hosiana mokombanda, Hosiana, Hosiana!
 Omuna gwaDavid nguka, te ya medhina lyOmuwa!



*Okanona Jesus ta falwa kuEgipiti omolwa Herodes.
 Omuyengeli okwe ya wilike.*

Noneudo otu nokulungama tu henuke oshiponga shaHerodes. Herodes nande oye a li omupangeli pefimbo lokudalwa kwaJesus, okwa li a fifikina nde ina tambula Jesus Omukulili waye. Okwa konga nokuli oku mu dipaa nokwa kendabala okukelela nge-

ONDA KANITHA

Ongame Bertta Manasse, Onandjokwe. Otandi ti: One aamwame me aagundjuka amuhe twa gongaleleni moshigongi shetweni mOnakayale, Ombalantu; onda kanithila **ombindja yeimbi** yepolo yokakutsi yoshikadhona. Kandi shi wo onde yi thigi moshihauto nenge omokulongela, onda dimbwa. Ngoka we yi mona, yi tumina ndje kOnandjokwe.

Otandi mu kundu aamwameme aagundjuka amuhe mOwambokavango.

no enenediladilolaKalunga lokuxupifa ovanhu.

Kalunga okwa tuma diva omwengeli nde okwa endifa Maria naJosef nokanona nde ova ka hondama kuEgipiti. Ove Herodes wonendo, ouna elalakano lilipi po mOkrismesa yoneudo?

VAMWE VA FYA MOSHIVILO

Djakarta. -Ovanhu 38 ova fya eshi va lya olwiishi la li la telekwa mokavilo kamwe.

Vati omushamane umwe okwa ninga okavilo, e ka ningila nekulu laye eshi a ninga eehani hembali a fimbapala.

Omushamane nomukulukadi nounona vavo vavali nainamweno, navo yo ova fya koikulya i noudiyo.

OMAPANDULO KAAHALITHI YIIFO NOMAMBO

Omimvo adhihe dha landulathana sigo onuumvo 1697, otwa mono omayakulo ogendji mokutaandelithitha oohapu dhevangeli koombinga noombinga dhaSuidwes nosho tuu palwe muuyuni. Omayakulo ga tya ngaaka otwe ga pewa kune aakwetu mboka hamu halitha iifo: Omukwetu nosho tuu Ehangano momagongalo nopomikunda nopushiinda.

Eyakulo lyeni lya tyaa ngaaka, dhimbulukweni olyo oshilonga oshinenene shoku taandelitha ewi lyevangeli. Osho tuu kumboka hamu kutha omambo gi ili nogi ili kOstara yOmambo okuga landithapo, one otamu longo naanaa oshilonga shomuyevangeliste nosheputudho lyoshigwana sheni, oshoka dhimbulukweni kutya, oshigwana hashi lesa osho otashi mono oondunge odhindji hadhopaukriste owala, aawe, naandhoka wo dhokwiikwatha shoshene.

Ano one a halithe yiifo, Omukwetu nEhangano nomambo goludhi kehe inamu ekelahi omukumo gweni moku shi ninga, oshoka one tamu longo oshilonga shomuuvithi noshomulongi mokwaamonika, aashiti pamwe naKalunga.

Kalunga ne mu yambele oonkondo metsikilo omumvo tagu ya, 1968, nosho tuu omimvo adhihe tadhi ke ya. Omuyenye ngoka mwa pupyalekwa nagwo mokulesha, mu gu pupyalekithe wo aakweni netalaleko mwa talalekithwa nalyo koohapu hamu dhi lesa momambo nomiifo, mu li talalekithe wo yalwe megongalo momukunda nosho puushiinda mboka inaaya makela uutoye mbuka.

Omukweni moshilonga,
 M.Amkongo.

ISRAEL OKWA HALA A KALE NAASHO E KWETE

Jerusalem.- Oministeli yotete ya-Israel, omushamane Levy Eshkol, okwa popya omafiku a dja ko kutya: Vo otava diinine eengaba dipe kutya opo pa xulila oshilongo shavo. Ina hala okwefa eenhele odo a kufa kOvaarabia moita oyo ya dja ko.

Okwa popya yo kutya, Ovaarabia ngenge va hala ouwa nombili, nava kundafane ashike naIsrael mombili nokuudafana nghe ve nokukafana. Ngenge inave shi hala, nena Ovaisrael ove lilongekida okwamena oufemba noshilongo shavo.

OUNYUNI OTAU TONGO SHIKE

AASITALONGWA YAANGLIKANA YA YAPULWA

Omusitagongalo omutiligane John Gramley waLuderitz nale waWindhoek, okwa yapulilwa uusitagongalo 12 ga-Novemba.

Pamwe naye kwa yapulwa wo aasitagongalo aaludhe, Lazarus Haukongo, gwegongalo Christ the King mOnekwaja na Filip Shilongo, ayehe oyomOwambo.

Eyapulo lya ningwa komumbisofi waDamaraland, Robert H. Mize. Euvitho lyeypulo olya ningwa komusitagongalo George Pierse, omupe opo a kondo ngashingeyi okuza kuAmerika, ta ka kala muTsumeb. Meyapulo omumbisofi Mize a tumbulile aayapulwa: "Uvitheni Kristus kaantu!"

ESHIVIFILO

Ngenge to nyolele kOmukwetu wa hala u nyamukulwe, unene moimima yoye mwene ihena sha neudifo levangeliki, ino dimbwa yo ekutu lokwaaluka li nostombe ngenge ou li mOushimba.

BRITTANJE OTA KANIFA OVANANDUNGE

Brussel.- Okwa hokololwa kutya, Brittanje meedula 1962/63 ola kanifa ovanandunge (wetenskaplikes) vahapunde va tembukila kuAmerika. Momuvalu wovatiliane 2,318 ovanongonhu ovo va tembukamo, 939 Ovaingilisha vovene.

EPANDULO ENENE

Otatu ku pandula unene memengerki, ongerki yetu sho ya li ya tumu omulongikadhona AUNE SHILONGO a ka putudhilwe oshilonga shomaagundjuka muSoomi.

Pamalandulathano gomagongalo sho eende mo, megongalo lyetu lyOlukonda otwe mu taamba eti-1-6.11.67. Omasiku ngoka agehe okwa kala naakadhona mbaka:

Maria Shongolo, Josefina Silas, Hilma Johannes Nangula, Helena Kronelius, Viktoria Salomo,

Ano osho ya longekidhilwa ngaaka oshilonga shomaanona yoomvula 7-15, ihe tala kuume otundi kehe mesiku kehe otwa yambekwa shili nomayambeko omanene. Otse yene otwe shi mono nomeho getu notwe shi uvuko nomakutsi.

Nani oshilonga shomaanona naagundjuka inatu shi tseya nande manga,

EFYO LOMBADILILA

KuTransvaal okwa dja ombapila ya nyolelwa kOmukwetu ya nyolwa eti-1. 9. 1967 tai ti:

Ohandi xupulifa kutya, omulumenhu mukwetu Filippus yaJohannes Shikongo, womukunda Oshambada meongalo Omundaungilo, a fya oufiku weti-30. 8. 67 moshiponga shomina yedina E. R. P. M. muTransvaal.

Omuxupulifi:
Asser Ileni.

OMUBISHOFI A FYA

Omubishofi Edwin Lekeanyane wongerki Zionist Christian Church, okwa xulifa oweenda waye moshilando shaye Sionstad Morea. Okwa li e needula 50. Lekeanyane vati okwa li omuyamba.

OMUNHU A FYA KOMUNDILO

Omulaule umwe okwa fya muStellenbosch, eshi ongulu imwe mwa li eetenga dombelendiwaina da topa komundilo. Onduda imwe oya umbwa ko ketopo olo.

OVANHU 212 VA FWA OMEVA

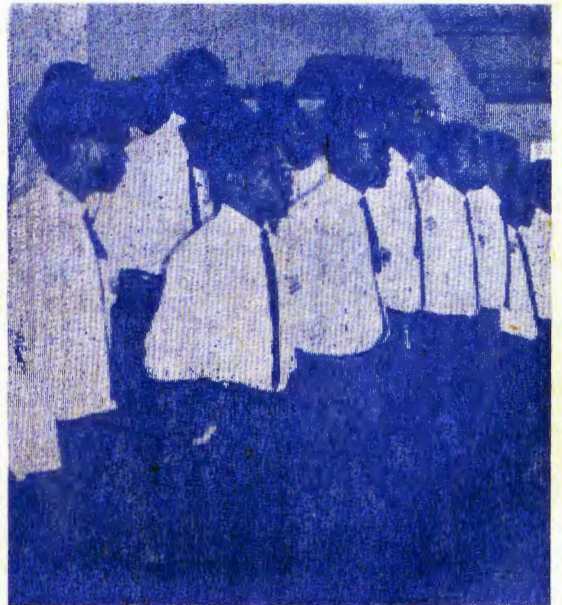
Manilla.-Konyala ovanhu ve dule 212 ova fya komeva, eshi ombautu omo va li ya ningina mefuta. Opa li oshikungulu nde osho sha etifa oshiponga.

noinatu koneka otatu ya adha ngiini. Mootundi ndhika oshikaha shaKalunga osha longo shili oshindji. Osondaha ya ningwa yeti-5.11.67, egongalo olya li lya gongalele po olindji nokuli, meme Aune a pewa ompito eete omakundilo ge. Okwa eta omakundilo a zi nago muSoomi, otwa dhimbulula a kala nga noongunga dhomakundo getu nale.

Oku za mosoondaha tuu ndjono aagundjuka megongalo oya holoka nomapulo gawo: Omuwa gwandje ndi mu longele pamukalo guni? Osho ya mono omayamukulo gawo ga ti: Omuwa okwe ku egululula osheelo u longe, longa ashike.

Kalunga na hambelelwe omagano gaa wapa sha. Omwenyo gwandje hambelela Omuwa ngoye ino dhimbwa uwanawa mboka eu ku ningila.

Peha lyaalukonda,
Johannes Gueendama.



Aagundjuka Aavenduka moshigongi shawo.

OSHIPONGA SHOSHIHAUTO

Omumati Filippus Simson, momukunda Onamulunga mOndonga, okwa lyatwa koshihauto she mu zi konima moshitauwa oshinene (ongalama) shokuza kOndangwa wu uka kUushimba. Okwa si pethimbo tuu ndyoka.

Nakusa okwa adhika ta zi kiilonga noya kaila oombaskela ya landulathana, nakusa e li konima yooyakwawo. Oshihauto sha zi konima she endeleda noshe mu pitula po nokwa si. Yomoshihauto inaa mona oshiponga. Omudhimba gwa falwa kOshakati nokonima gwa galulwa ko gu fumvikwe. Aavali yaFilippus otatu ya halele ehekeleko tali zi kombanda.

ESHIVIFILO

Paife efimbo ola fika, ovo mwa hala mu leshe oshifo shOmukwetu omudo tau uya 1968, mu lishangife nde mu mbeshitele divadiva oshifo sheni. Tu endeledeni diva fimbo inatu uya pexulilo lomudo. Oikwatakwata oha nyika edilo, ino tokelwa vali. ngoudwaali.

Ou iho tambula shito shifo, djamo meemhofi nde mbeshitela diva. Ou iha leshe oshifo okwa fifikina.

Oshifo shOmukwetu otashi landwa kodula 60c mOwambo, kOushimba nOkavango 80c molwostombe. Oshifo shEhangano otashi landwa momudo 15c mOwambo, kOushimba nOkavango 20c molwostombe. Tu endeleda divadiva!

NALE OTWA LI OVAKWANALU- HEPO VONGAHO



Ovakwanyama nOvandonge, Ovakwambi nOvangandjela, Ovakwaluudi nOvambalanhu, Ovakolonkadi nOvaunda, Ovakavango needalele domedu lomamanya, Ovayebele novashitwa aveshe, ongenge moshilongo shetu ile okoilongo yopondje, nale otwa endaenda momulaulu wofokofoko nomomudile wefyo. Twa enda nde twa kala ngaashi twa kala Kalunga tuhe mu shii.

Efimbo eshi la fika netango longhenda eshi la pita, btwa mona ouyelele. Ovo twa kala tuhe na oukwashilongo fye tuhe nomahangano efyuululo, twa kala tuhe na eteelelo lasha. Ndele nena;

Otu na Jesus Kristus nde otwa ninga vopopepi mohonde yaye. Paife oye ombili yetu nde okwe tu hanganifa. Okwa ngumuna po ekuma letondafano la li pokati ketu, eshi e tu reyaula nde a halakanifa po etindi loulunde. Paife okwe uya e tu udifile ombili, shaashi muye ohatu fiki kuTate.

Otwa lesa: Kamu shi vali ovaenda novanailongo, ahowe, omwa ninga ovakwao vovayapuki novaneumbo laKalunga. Mwa tungilwa momukangha wovayapostoli novaprofeti omo Jesus Kristus oye emanya lokolonhela. Omo ngenge hatu kala mo nomomudo oo twa finda, ohatu ka tungwa mekwatafano nde hatu kulu nokukola tu ninge otembeli lyapuki mOmwene notu ninge ngaha eumbo laKalunga momhepo.

OVAITAVELI NYE, DIININENI FIYO OXUUNINWA

Momudo ou mukulu, ovaivaveli vOmwene, ovo ye hole omhango yOmwene wavo Jesus Kristus nde va hala oku i wanifa omutenya noufiku, ova kala mekondjo linene nomomudo ou tau xulu 1967. Ova kala nomau-djuni nde va nyematifwa koipwe younyuni ou. Ye va djuupalekela ondjila nekondjo lavo. Oyo va li va hala oku i wanifa, ove udite inave i wanifa, ove udite ongunga. Otava nyikile olutu oufiye kutya: Woo, olyelye ta mangulula nge molutu eli loulunde,

shaashi oyo inandi hala ohandi i longo.

Edalo lomukulili nali va pupaleke keemwenyo. Nava xwame nde nava diinine meitavelo. Nava nyashuke meitavelo ngonhwa. Nava tale kefiki-lo kondjabi yefindano vo va tumbule: Momudo ou mupe yo, keenghono da ou ta koleke nge, ohandi tondoka ndi shi kwate. Osheshi otwa lesa, ovo tava diinine fiyo exulilo, otava ka djalekwa oikutu itoka nomadina avo itaa dimi mo moramata yomwenyo. Omadina avo taa hepaululwa kuJesus koshipala shaXe Kalunga nomoipafi yovaengeli vaye.

EWI

LYEVANGELI

MORADIO

Otundi 8.30 ongulohi

Omota 31

26.11.67 Lukas Dama.

17.12.67 Omaimbilo nowandaha omumbisofi Dr. L. Auala.



OTWA YUKA MOMUDO MUPE

Inda momudo mupe nelipulapulo. Tala oyo wa longa na osho wa kala omudo ou wa ya. Livela eembed nde tameka okukala kupe. Ngenge ou na eengunga domunhu, di futa. Ngenge owa ningafana namukweni nde kamu nombili, inda kuye mu lipe ombili. Osho she ku shundula omudo mukulu, shi henhuka uhe shi longife vali momudo mupe. Ino twikila oukolokoshi momudo mupe, u xulifila momudo mukulu. Tila Kalunga, dulika koipango yaye.

Fimaneka xo na nyoko, u kale nawa nomwenyo mule kombada yedu. Ninga nde kwafa evangeli li tondokele kuvo inave li tambula natango. Ove mwene ino kala oshitindile. Ino kala u na okamundjene. Ngenge to kala ngaha, elaka otali uya kwoove likukutu: "Hano eshi u na okamundjene, uhe fi mupyu ile utalala, ohandi ku kungumo mokanya kange."

"OMUKWETU" ota halele ovaleshi vaye avesheveshe OKRISMESA IWA NOMUDO MUPE WELAO LOMUJESUS KRISTUS!

Ota halele yo aveshe ihava lesa shito oshifo nde va tokola oku shi lesa momudo 1968 naovo ve li natango meemhofi, exwamo lepapuduko tali di kOmhepo lyapuki!