



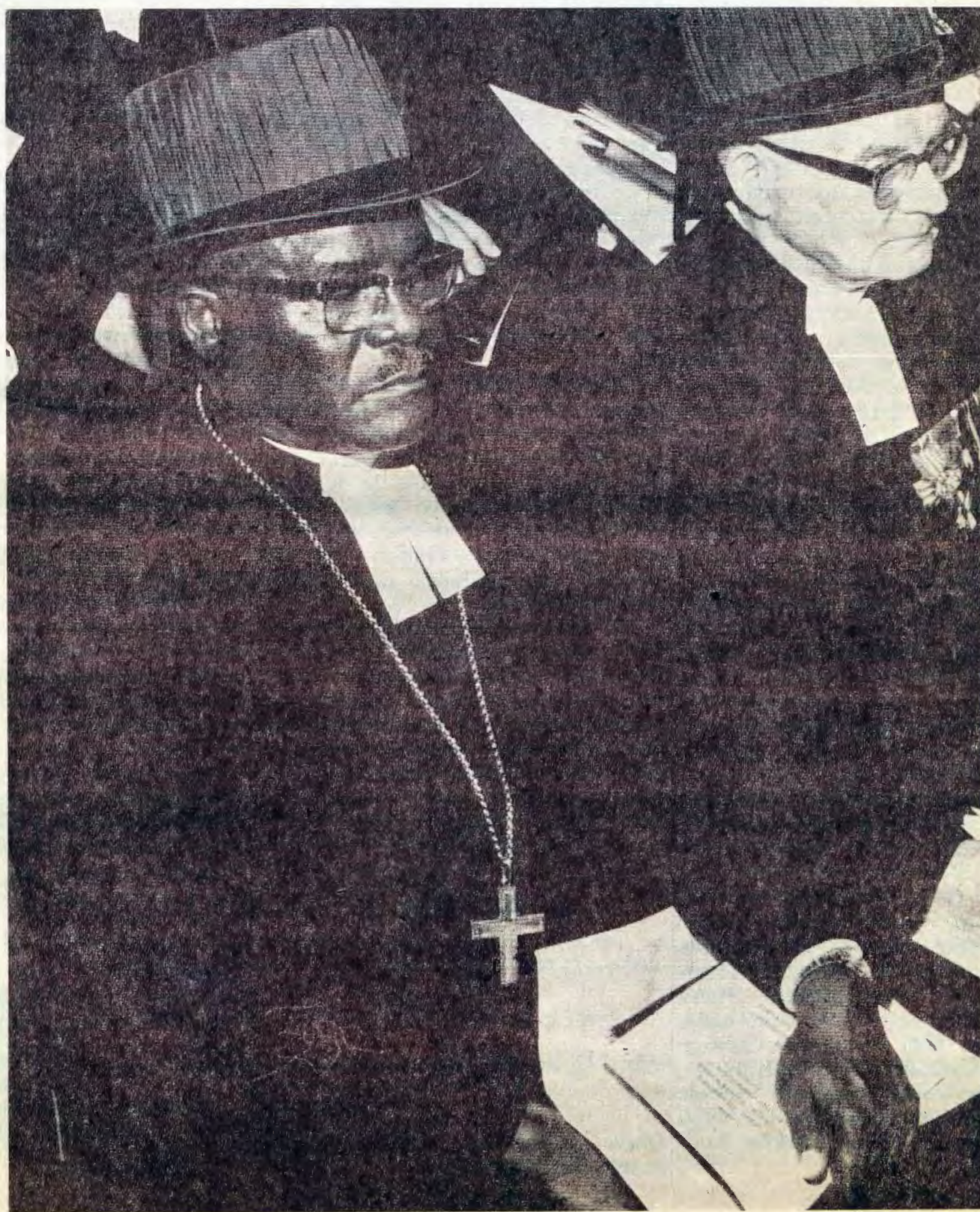
# OMUKWETU

Oshifo shOngerki onkwaevangeli paLuther yomOwambokavango/Die Tydskrif van die Evangeliese Lutherse Ovambokavango Kerk

No. 23

DESEMBA

1967



*Omumbisofi L. Auala a pewa onkantu yuundohotola muSoomi. Lesha onkundana ayihe kepandja 6-7.*



DESEMBA 1967.

## OSHILONGA SHONGERKI OSHIKE?

Ohatu dulu okulipula fye vene kutya, omolwashike tu nongerki? Oshilonga nelalakano longerki oshike? Ovanhu ve lili nove lili ohava yandje omanyamukulo e lili noku lili kepulo eli. Vamwe ondi wete otava ti kutya, oshilonga shongerki osho okuxupififa eemwenyo. Vamwe otava ti shiimba kutya, osho okweeta po nokutunga oumwayinafana nekwatafano. Vamwe shiimba tava ti kutya, oshilonga shongerki okulonga ovanhu oshili yom-Jesus Kristus. Natango tuu vamwe shiimba ove nokutya, osho okuudifa evangeli. Ongerki otai dulu nde otai ka dula okulonga oinima ei aische, ashike mokulonga shimwepo shomu ei inashi kwatelela mo ikwao.

Tu tye kutya, oshilonga shongerki osho okuudifa evangeli. Divadiva ohatu pulafana kutya: evangeli oshike hano? Hano to dimbuluka Jesus eshi a pulwa oshipango eshi shinene shi dule aische (Mat.22:34-40) Jesus okwa ulika oinima ivali i fike pamwe.

Omunyoli womambo umwe, dr. Georgia Harkness, membo laye - **The Church and its Laity** - okwa shanga a ti: "Elalakano longerki nelongo layo, olo okukulika mokati kovanhu ohole yaKalunga unene moovakwetu." Ps. 138. Efatulo eli otali tu tuu kumwe na osho Jesus a hongwa? Vahapu ove lifatula momalupe mahapu. Ame ohandi itavele kutya, elalakano longerki olo unene okuyandja okuxwamifa eliudo nohole. Lesha 1Kor.13. Mombimbeli aische, unene mEstestamenti Lipe, exuku lamo olo OHOLE: Kalunga e tu hole, e hole ounyuni e hole ovalunde. Lesha Joh.3:16. nosho Joh.15:9-13 nosho yo 1Joh.4:7-13.

Otashi dulika hano twa yooloka momaitavelo ngaashi ovanhu moku-xwameka ohole pamahongo avo tava kala, ndelene atushe ohatu itavele kutya, ohole oyo oshinenenima. Hano ngaashi Kalunga e tu hole, osho nafye tu noku mu hola nokuhola ovakwetu Ndishi mekwatafano letu naKalunga, ou e li odjo yohole, Omhepo yohole tai uya momitima detu nde tai ningi mo olufifiya lohole tai fulukile koo-vakwetu?

## OVAWILIKI OVAKWA-LUTHER NOVAROMAKATOLI OVA TWAFANA OMUKUMO MO-SHIVILO SHOMIDO 450

Augustin Cardinal Bea, opresidende youkwahamushanga woRoma-katoli mombinga yokutunga oukumwe woukriste, okwa tuma omakundo ombili manene kudr. Fredrik A. Schiotz, opresidende yOngongahanganano yOvakwalutheri mounyuni. Ome-fimbo loshivilo shomido 20 shongongahanganano yOvakwalutheri noshivilo sheyelifo leitavelo shomido 450 mulund,Sweden. Dr. Schiotz okwa shunifila yo Cardinal Bea enyamukulo pandulo, nde otali shikula apa:

Omufimanekwa,

Ongongahano yOvakwalutheri mounyuni oya pandula shonghono omakundilo mawa oo we tu tumina. Omakundilo oye otwe a tuma yo koilyoongerki dehangano letu mefimbo loshivilo sheyelifo leitavelo sheedula 450 noshongongahanganano sheedula 20.

Otu li paife mehafo loshivilo sheyelifo leitavelo. Neudo otwa indila, keembinga neembinga dounyuni oshivilo shi fimanekwe. Eengerki detu oda shiivifilwa, di pandule Kalunga unene: Molwomwenyo mupe twe u pewa mevangelu notu pandule Kalunga, eshi twa pewa omhito yokuudifa evangeli eli moilonga nomeendjovo momapupi aeshe

Oshoongalele (assembly) shomudo 1957 shongongahanganano yOvakwalutheri, osha popile emanguluko twe li pewa muJesus Kristus sha ti: Momapupi aeshe opa kala ongerki iyapuki yOkatolika nongerki yovayapostoli, oda omutwe wado Oye Jesus



Ohole yaJesus oya holoka mokufya kwaye momushiyakano.

Kristus. Muye Kalunga okwa hololwa ounyuni nokuye ofye hatu fikifwa meitavelo loshili kOmhepo Iyapuki.

Pehovelo ongerki oya li omutungi weitavelo, tai tambulifa nde tai twala elaka loyayapostoli loilonganghono yaKalunga mehistori lexupifo, okukalamwenyo noilongayakulo yokedu, efyo nenyumuko laJesus Kristus nokwiifana ovanhu kedimepo lomati-mba keitavelo. Onghedi ei yovayapostoli, omo Omwene ta longo nde ta pangele, oya kala ko lule nde inai lunduluka momafimbo aeshe. Mepupi keshe ongerki oya kala nelaka eli nde ya longa nde ya pangula palo. Onghe oshoongalele osha, findile enenediladilo: Emanguluko nali yelifo ongerki.

Otwa dimbuluka kutya, Omhepo Iyapuki oye tu pa ehanganano laalushe muJesus, omuxupifi wovanhu aveshe. Otwa hala tu longeleni kumwe nde tu tungafaneni.

Eengerki detu tadi longwa komakundilo oye kutya, otu na natango ondjila ile tu li pamwe, nande omayooloko nomatukauko otaa pangele. Onda mwene enyamukulo moshoo-ngalele sheengerki detu sha ongalele muMinneapolis kutya: Tu pwilikineni nawa omanyolo eshi taa popi, oo a tameka movayapostoli, otwa hala okupwilikina Omhepo Iyapuki eshi ya hala okutu lombwela mepupifimbo eli.

Oilyoongerki yongongahanganano oya hala elongelokumwe nanye "momudo ou weitavelo, ngaashi sha popiwa komupapa Paul VI. Momudo ou weitavelo kape noitya tai eta naanaa omadiladilo eindilo lange keengerki, shapo ekundo olo omuyapostoli Paulus a xulifa nalo epistoli lokOvaroma eshi a ti: "Hano ou ena eenghono oku mu koleka opavangeli lange nopaudifo laJesus Kristus, opashiholekwa osho sha hololwa, osho sha li momafimbo aalushe inashi hololwa. Ndele paife osha hololwa nokomanyolo ovaprofeti paufu laKalunga kaalushe osha shiivifilwa oiwana aische, okudika eduliko leitavelo. Oye ou Kalunga, omunandunge aeke, molwa Jesus Kristus, na fimanekwe alushelushu.

Fredrik A. Schiotz,

President, Ongongahanganano yOvakwalutheri.

## OSHIKUNGULU MEFUTA LAGALILEA



*Nonena Jesus ta ganda iikungulu mutse nelombwelo: Efuta, lota! etaku ti thilu.*

Luhapu haku tiwa "Etale laGalilea". Onguloshi oyo yonale efuta ola li la mwena la yalalala ongekove linene lomwiidi wa tetwa ufike pamwe. Oudila ova li tava sheketa nounona va kala tava danauka onguloshi nemanguluko, inaku diladilwa otaku uya oshikungulu.

Jesus novahongwa vaye ova li tava ende lwopopepi nomukunghulo ndele omomeva mokawato. Jesus a mona ovanhu komukunghulo nde okwa kanghama a kundafane navo. Opo va londa vali owato nde tava yuka, kombinga ikwao yefuta.

Jesus okwa longa unene efiku keshe. Okwa mwena efimbo nde a kundafana naXe efimbo limwe. Paife a loloka nde okwa nangala mokawato, pefimbo omhepo iwa tai va pepelle.

Okawato ka pinda omeva nde ka hala okuyada. Ovo va li mo ova kala va teelega va ka ote diva koshi yomeva. Opo divadiva umwe wavo a dimbuluka kutya, shili Jesus naye omo eli mokawato. Ova li ve mu dimbwa koumbada. Umwe e mu ifana: Muhongi, Muhongi! Ohatu ningine, tatekulu!

Okwa hovela okundjungaulwa. Okawato taka nhuka apa naakwinya ndele aische ya kala nawa nde okwa kofa. Ohaluka lwokolulyo lwavo okwa dja omhepo yoshikungulu nde oye uya kombada yefuta laGalilea. Omhepo ya denga nde ya undaula okawato. Okawato ka nhukanhuka ngaashi oshipeta shei kombada yomeva. Ovamenhu ovo ve li mo, ova hetekela eshi naashinya mokukeelela okawato kaha ningine, ndele inava dula sha. Efimbo

olo Jesus natango okwa kofa ashike.

Jesus a penduka nde a mona nani oshikungulu shi li po. A tala moipala yovamati vaye eshi va li tava kondjo. Opo ekufi linene le uya novahongwa va fifikina va teelega ashike okuningina konima yomunute umwe. Ekufi ola pita po nde inava ningina manga.

Jesus a fikama mokawato nde a yelula omaoko aye lwokefuta. Meweelelo lomeva ovahongwa ova uda ondaka ya Jesus eshi ta popifa efuta. Okwa popifa omeva ongo ta popifa oifitukuti inene hai udu ko. Diva omhepo nomeva okwa wa pedu nde okwa tya filu.

Efuta la lota nde la kala ngaashi nale. Okawato ka enda vali nawa nombili. Oilemo ya halakana po nouyelele wohani owe va minikila.

Inashi wapala okukala mboli kokule naJesus. Ngenge oto nyanganyanga kokule naye, fimbo u li mefuta nofimbo oshikungulu tashi ku hange momunute umwe ino shi fekela, oto mono ekwafo tuu mbela? Jesus ndishi oku li kokule we mu fiya po? Ngenge ngaha, oto ningine mo diva.

Kala alushe pamwe naJesus mwato imwe, u li ponghulo naye. Fiku oikungulu yefuta tai ku pindjile, ove to mu pendula divadiva. Eshi oku li pwoove, ota fikama nde te ku kwafa.

### OSHIGONGI SHAALONGI YOOSKOLA

Oshigongi shaalongi yooskola dhaanona aayevangeli paLutheri otashi ka kala mOkahao Kalunga ngele eshi hala eti-12 lyaJanuali tashi tameke nohungi etitano notashi hulu ongula yetiyali eti-16 lyaJanuali 1968.

Aalongi yaanona aalumentu ya pita kOniipa nokOngwediva, otaa hiywa ye ye kOshigongi shawo.

Omulongi kehe te ya na tume elaka kuJason Amakutuwa eti-27 lyaDesemba 1967 manga inaali pita, opo tu tseye omwaalu.

Sho to ya, etelela 50c molwiikulya niimaliwa yongalo wo.

Ila to galikana Omuwa e tu yambeke.

Jason Amakutuwa.



Lamek Hamunjela, Okakwa, Oukwanyama, ota shiiva okutekula nawa oimeno. Ngenge wa hala omakaya noshikapa noikunwa imwe, oto i mono puye. Oku li apa moshikunino shomakaya.

## OMVULA YA LOKO

Oya loko koombinga noombinga muSuidwes nomevi lyiimpungu pomahala nomahala oya mwakagula po nomeya. Okwa kala enota. Yamwe ya gee noya dhenge nayi iimuna yooyakwawo, sho ya adha omithima dhawo dha filwa po kiimuna yanima ngwiyaka. Onda kundana, omumentu gu-

mwe okwa tatula po oshuma shomukulukadhi gumwe omukulupe, sho a adha a teke momuthima manga iimuna yamwene gwomuthima inaayi nwa. Omumentu oshuma okwe shi kutha komutse gwomukulupe a adhika ta zi po pomuthima nokwe shi hata pevi. Omukulupe okwi ikwata komulungu, e mu dhenge eho nokwa zi po ta yi kokagumbo ke noluhodhi.

A a n t u p o m u t h i m a , O m u t h i m a o m u l e , o n k e e a a n t u o t a a t a a m b a t h a n a o m a y e m e l e .



## “AANELAGO AANAMUTIMAHE- NDA OSHOKA OYO TAA KA SILWA OHENDA”

Olyo lya li ekumagidho twe li pewa komuvangeliste gwOngerki yetu yOvambokavango muka muTsumeb. Ayehe ya gongalele mpoka oya li mombepo yimwe ombwanawa yengungumano. Noya fa ya hala oku indila Tate Kalunga e ya ninge wo, aanamutimahenda.

Otwa kumagidhwa wo kutya, omo-

Iwashike tatu kala aanamutimahenda? Otatu kala tu na omutimahenda noolye? Otatu kala tu na omutimahenda naantu ayehe. Ha ku nyanyukwa omukwetu a gwila moshiponga. Haku nyanyukilwa mukwetu te ehamekwa. Ihe tu kale tu na omutimahenda nayo. Tu ya galikanene ya galukile ku nguka ena omutimahenda. Olye ena omutimahenda naantu ye? Oye Jesus omunamutimahenda a sile uuyuni ohenda. Sho i igandja momushigakano tu hupithweni atuheni.

B. K. Ashipala.

## EYANDJO LOVETA

Exodus 19:1-9;20:1-17.

Josef vo naxe novamwaina ova fya. Omaludalo avo a hapupala nde a kola. Ndelene ohamba yaEgipiti oya li inai hafela Ovaheberi eshi va hapupala nde ve li moshilongo shaye. Onghe oye va longifa oilonga youpika.

Moses okwa shiiva kutya, ovanhu vaye ova pumbwa emanguluko. Fiku Kalunga e mu ifana e va pitife mo moupika, opo a dja a ka kundafana nohamba Farao i va efe va dje mo.

Konima yomadingililo amwe, Moses okwe va pitifa mo muEgipiti nde e va pitifa mEfuta Lilitaryana nde e va mofuka. Mofuka oikulya nomeva oya li yapumba. Vamwe tava ti nokuli: “Twa li alushe twa kuta muEgipiti, nande ne otwa longa oilonga idjuu.” Vamwe va li va hovela okufimaneka oikalunga ikulu. Moses e uditte ovanhu vaye ova puka, ova pumbwa oveta. Onghe okwe va twala kondudu ile yo oya kula. A ya nde a indila Kalunga e mu kwafe.

Pwa pita efiku. Moses a aluka kondudu nopefimbo olo opwa tameka oshikungulu. Ovanhu ova li va tila, shaashi Kalunga okwa fa ta ka popya moshikungulu omo. Eembadi oda she-la. Moses a leshe eeveta odo a pewa kuKalunga, e di leshe mokule. Eeveta 4 otadi popi kutya, omunhu oku nokukala ngahelipi naKalunga. Dikwao 6, otadi popi kutya, omunhu oku nokukala ngahelipi namukwao.

“Ashishe osho Omwene te tu lombwele, ohatu shi ningi,” osho ovanhu va tya. Ova shikula Moses fiyo kuKaanana, edu olo li nokuninga lavo vene. Omo va kala efiku nefiku nokweenda nokudulika koipango 10 oyo Moses e va pa.

Vamwe va ningile omanganga mofuka, omo va fila. Ovo aveke va li neduliko nediiino, ova fika kuKaanana. Ngenge ove oto ningi omanganga mondjila, ito fiki. Diinina oveta u fike kuKaanana shomeulu.

## EEDILA DA WA, 38 VA FYA

Hongkong. -Ovanhu avesheshe 38 ova fya eshi edila mbali da wa mombanda nde ovanhu ve fike apa va fila moiponga ei. Ngenge to ende modila, ino dimbwa okulineekela Kalunga, osheshi efyo otashi dulika li ku hange okafimbo keshe.

## OMAPULO MOSHIONGALELE SHOVANYASHA AVESHE VONGERKI ONGWAEVANGELI PA LUTHER YOMOWAMBOKAVANGO OKWALI 5 - PAUFUPI OKWA NYAMUKULWA NGAHA:

1. Ondi longe ngiini mokati kaapagani?
  - a) Ohandi va ilikanene.
  - b) Ohandi va hepaululile Jesus noku va talela po. Eenghedi dange di va hokife Kristus.
  - c) Ohai longifa emona lange mokutandavelifa evaengeli mokati kavo, popopi nokokule.— Oku va imbila omaimbilo.
2. Ondi longe ngahelipi mokati kovaliteeki?
  - a) Oku va ilikanena.
  - b) Okukonga ekwatafano navo noku kundafana navo nohole.
  - c) Oku va hololela ohole ya Kristus. Okutala osho she ve li teekifa sho shi kufwe po, opo va alukile kOmukulili wavo nova diminwe po omatimba avo.
3. Ondi nokulonga ngahelipi mokati kaavo opo va di kOushimba?
  - a) Otava pewa oilonga moyoongalele yovanyasha ngaashi va li ovadiinini eshi va li mOushimba. Ota kundu oshiongalele shovanyasha eshi e uya.
  - b) Oku va hololela omalunduluko oo a ningwa manga va li mOushimba nelalakano lalo. Okukundafana navo oinima yopalutu yo, oyo tai eta ouwa naayo tayi eta oiponga.
4. Ondi longe ngiini mokati kovanafikola?
  - a) Okukonga ekwatafano navo. Oku va hololela Omukulili wavo nghe e va hole, nota teelele ve mu longele. Eendunge tave di hongwa otava teelwa ve di longife pahalo laJesus.
  - b) Oku va ilikanena noku va twa omukumo va kale ovadiinini.
  - c) Okuva kwafa meembumbwe dokolutu yo.
  - d) Va kale tava diinine okulesha Ombimbeli, Eendjovo daKalunga odo eliko linene.
5. Ondi nokulonga ngahelipi mokati kaavo ve li mOushimba?
  - a) Oku va ilikanena va amenwe koiponga yokolutu noyopamwenyo.
  - b) Oku va shangela noku va twa omukumo nokuva hepaululila osho sha tiwa mOwambo naasho tava teelwa ve shi ninge, mangha ve li mOushimba. Va leshe Omukwetu nEhangano.” Oku va tumina omakundo okutwa omukumo va leshe Eendjovo daKalunga.

## OMWAALU OMUNENE TSHOMBE NATANGO OMUALGERIA

Nieu-Delhi. —Epangelo lyaIndia olya tokola okugandja iimaliwa R17, 140, 000, yi longithwe mokuhumitha komeho elongo lyiinyolwa momalaka 15 gAaandia, ngoka ga hogololwa ogo ga longithwe melongo lyopombanda pehala lyOshiingilisa shoka osho sha longithwa shito. Etseyitho olya gandjwa kudr. Triguna Sen, oministeli yelongo muIndia.

*Monika Haimbodi, Engela,* ota ti: Inatu pwila moulunde ngaashi tashi monika. Tu dimbulukweni, ofye oshife shaKalunga nde ote tu djuulukwa tu kale twa yapuka. Aluka keendjila dii nefimbo lihe ku hange meemhofi, osheshi otali ya ngomwiyo nongoshiliva tashi mbaduka.

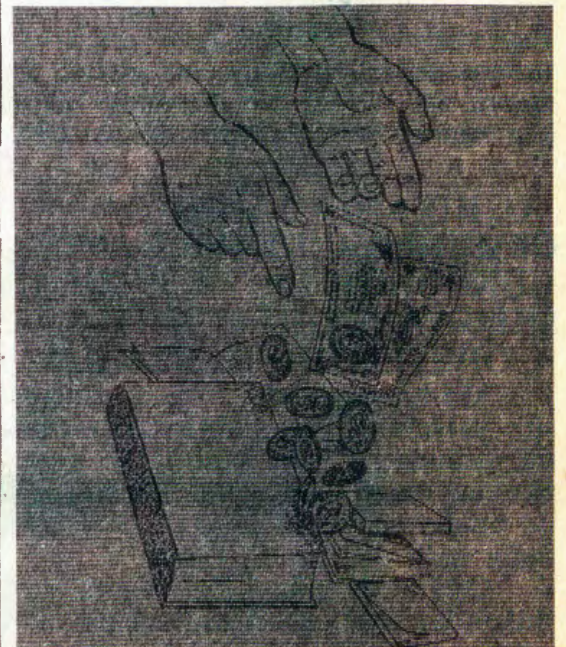
Natango Moise Tshombe, omupangeli nale waKongo, oku li muAlgeria. Epangelo lavo muKongo ola li la kendabala, Moise a dje ko koi-longo nde e uye ve mu talife okalau-le, ngaashi epangelo laMobutu le mu pangulile efyo, ndelene ina yandjwa. Tshombe natango ota li ashike oifima yaye muAlgeria.

## ODILA YA WA, 11 VA FYA

Singapoer. —Odila imwe yOvaingilisha ya li tai tuka, oya wila mefuta eemaila 500 mouninginino waSingapoer. Omwa li ovanhu 11 nde aveshe ova fya. Inapa shiivika oshike sha eta oshiponga.

## ETSEYITHILO

Ngele to landa embo mostora, li tala nawa nokukonakona nawa, u tale ngele oli na tuu omapandja agehe niinima ayihe tayi pumbiwa oyi li tuu nawa. Osho mokulanda shaashoka moostora, tango tu nokutala nawa ngele oshinima shoka oshi li tuu nawa. Ngele oshoola, nenge shi nombuthulu nenge sha endama, nenge shi li po etata, otu nokushishunitha kumwene opo tu pewe shilwe shoka shi li nawa. Dhimbulukwa ompango otayi ti; Ngele wa dhimbulukwa oshinima kaa shi li nawa, shi shuna ko mbalambala manga inoo shi ndowapaleka. Ino shi nyola edhina lyoye, ino shi hondjulula nenge u shi gumagume unene. Shi shunitha naanaa shi li molupe moka we shi kutha mostora, nena omunastora ote ku pe nombili shilwe nenyanyu.



Okugandja iimaliwa mongalo yevangeli, ohayi ka nyanyangidhitha o-mambo gokuleshwa mokuuvitha Kristus kaantu. Osenda yoye noyandje nge tadhi tsakanene, otatu fala ngaa-ka oohapu kaamwameme taa pumbwa okulesha iinyolwa.

## “KAAFALA” PRESIDENDE

Oshifo die Suidwes-Afrikaner she-ti-20/10/67, osha hokolola onghunda-na yomuZambia kutya: Omutilyane umwe womuSuid-Afrika, okwa handukilwa kepangelo laZambia, a pe-wa a kale mondolongo eehani 9 noku-longifwa noudjuu. Vati okwa handukilwa, eshi a li mombaa imwe nde ta ula omulaule umwe ta ti: Opresidende yeni okaafala mani. Osho a pewa etimba eshi ta sheke opresidende Kaunda ya-Zambia.

# OMUBISHOFI AUALA OKWA MONA ONGHATU YOUNDOKO- TOLA

**ONGERKI YOMOWAMBOKAVANGO NOSHO OMWAMEMENGERKI YOMOUSHIMBA NOOKAUME AVESHE MUSUIDWES NOPO-NDJE, OTAVA KUNDANA OSHINENENIMA OSHO OMUBISHOFI LEONARD AUALA A PEWA ONGHATU YOUNDOKOTOLA YEFIMANEKO MOSKOLA YOKOMBADA MUHELSENKI MUSOOMI.**

Omubishofi wongerki yomOwambokavango, Dr. Leonard Auala, oye omulaule w o t e t e mEhistoli lOwambo nolOvalaule vomuSuidwes aveshe ou a fimanekwa ngaha. Oye yo omubishofi Omudalelwamo muSuidwes alishe ou a pewa efimano loundokotola. Onghe otashi ka dimbulukiwa nokomesho meedula, shimha taku ka popiwa ehistolilOvadalelwamo vaSuidwes. Osha talwa nde osha konakonwa kovakulunhu kutya, osha wana omubishofi a fimanekwe ngaha.

Oshivilo sheyandjo loundokotola osha ningilwa muSoomi. Osha danwa mumwe noshivilo sheyelifo leitavelo nomubishofi Auala okwa ifanwa a dane kwinya oivilo ei ivali.

Omufitaongalo wongeki yetu, Festus Ashipala, ou e li muSoomi te lihongo, okwa kala yo moshivilo sheyandjo loundokotola, omo ovo va pita omakonakono oundokotola na ovo va fimanekwa nonghatu ei va pewa oundokotola. Ashipala ou a tala nomesho ashishe sha ningwa moshivilo shinya, ita ti vati, okwa nyolela hamushanga wOmukwetu nde okwa hokolola naanaa ngaashi tashi shikula apa.

## VATANO OVA FYA MEENDJILA DASUIDWES

Ovanhu vatano ova fya na vatatu ova ehamekwa unene moiponga yopatu meendjila muSuidwes. Oshiponga shinene osha ningwa pokati kaSwakopmund naWalvisbaai, omo ovanhu vane va fya na vavali ya ehamekwa.

Eembaatili oda fya poshikando na vavali ova ka fila moshipangelo eshi oihauto ivali ye lidenga mumwe oipala.

Eembaatili oda li adishe moshihauto shimwe, moshihauto shikwao omwa li oindele itatu. Shilumbu umwe ina mona oshiponga, vavali ova ehamekwa.

Omutilyane umwe Andre Young waWindhoek, okwa mona oshiponga puKaribib, eshi oshihauto shaye sha dja mondjila nde sha kandoma. Moshiponga shimwe omutilyane umwe Engelbrecht pokati kOutjo nOtjiwarongo, okuulu kwoshihauto shaye kumwe okwa topa. Oshihauto sha dja mondjila nde sha kandoma. Mwene opo a fila.

## OSHIKANDJO SHUUTEOL- GI MUHELSENKI SHA GANDJA UUNDOHOTOLA MOSHITUTHI SHEGWANITHO LYOMIMVO 450 DHEYELITHO LYEITAALO

Moshinyanga oshinene shojuniver-  
siti yaHelsinki mwa dhanwa oshitu-  
thi oshinene. Omwa li omahiko goma-  
nkuma, omalilo goofioli, omakugaga-  
no guuhumba wi ili nowi ili nookuoro  
tadhi imbi omutse gu pwatuke.

Oshituthi shika osha ningwa mo-  
shikandjo shelongo lyuukalunga oku-  
gandja uundohotola wesimano kaasi-  
manekwa 12 moka omumbisofi  
L. Auala ayalulilwa mo. O-  
shikandjo shika osha gandja wo uundo-  
hotola kaayilongi 8 mboka ya piti o-  
makonakono guundohotola welongo  
lyuukalunga. Opromotio ndjika oya li  
ya wilikwa komukuluntu gwoshikandjo  
shuuteologi muHelsinki, omuprofesori  
A. Nikolainen.

Oshikalimo shekundo lye kaata-  
ambi yuundohotola nokaayenda ayehe  
ya li mo, osha li ngeyi:

“Emanguluko metegelelwathimbo”  
Okwa ningi epopitho lyoshituthi moka  
a tumbula kutya, emanguluko oli li alu-  
he metegelelwathimbo. Eitaalo lyopa-  
kriste olya zi momadhiladhilo gema-  
nguluko. Eyelitho lyeitaalo olya ya po  
okulalakanena epepaleko lyelaka lyu-  
ukriste wegongalo lyotango okuma-  
nguluka koho yoonkondo dhomupange-

li. “Kristus okwe mu mangulula mu  
kale mwa manguluka, ikwateleleni one  
mwaa tulwe we meti lyuupika.” Mo-  
kudhana oshituthi sheyelitho lyeitaalo  
lya gwanitha omimvo 450, otu na wo  
epulo kombinga yesindano lyemangu-  
luko. Omuntu kehe ota tegelele ema-  
nguluko methimbo tali ya. Ihe ha e-  
manguluko ndyoka tali kumuna po o-  
hole. Okulalakanena emanguluko no-  
kwiikalela oku li moonkondo ndhoka  
dhaa shi ku pangelwa nenge okuningi-  
nithwa. Nongula yemanguluko otayi ya  
aluhe konima yuusiku wethininiko. A-  
akriste otaa tegelele emanguluko muu-  
kwaaluhe. Ihe nomethimbo lyongashi-  
ngeyi wo ukriste owo oshinima sho-  
madhiladhilo gemanguluko. Eitaalo lyo-  
pakriste moondunge nomomadhiladhilo  
galyo olya simanekwa muuyuni ku-  
tya, olya ehanganu lyemanguluko no-  
lyohole nolyoshili.....”

Opo ihe okuoro ya imbi momu-  
paulilo omunene eimbilo lyuukwalu-  
theri: “Kalunga oye egameno.”

Omukuluntu omudeka ani  
gwoshikandjo shuuteologi  
okwa gandja ihe uundoho-  
tola, tango komumbisofi L.  
Auala ta ti. “Omumbisofi o-  
musimanekwa L. Auala, e-  
landulathano lyopa alfabe-  
ta olya kutula ukale omu-  
popithwa gwandje gwotango.  
Omumbisofi omusimane-  
kwa, oshishi okundhindi-

likwa shotandi vulu oku ku  
popitha melaka lyOshiso-  
omi, ngoye omukalelipo  
gwongerki onkwa Afrika no-  
muwilikigwayo. Ongerki  
yopa Luther muSoomi no-  
ngerki yomuS.W.A. yOwambo-  
kavango odhi lyaathane po-  
pepi shili. Ha mu shika ashi-  
ke shotu limeyelitho lyeita-  
alolimwe, ihe uunene shotatu  
vulu okwiilonga melaka li-  
mwe nokukonakona omapu-  
ko guuyuni wetu noku ga-  
yelitha. Oshikandjo shelo-  
ngo lyuuteologi oshe ku  
tseya u noondunge nowa  
kola, omuwilikigwonger-  
ki, ngoka esimano lyuuwana-  
nawa we lya lundu oonga-  
mba dhoshilonga nodho-  
shigwanashe. Oshikandjo  
shuuteologi osha tegame-  
na ngashingeyi upewe uu-  
ndohotola wesimano, no-  
wowotango okupewa Omu-  
Afrika kojuniversiti ya-  
Helsinki.....”

Opo ihe okwa zaleke  
omumbisofi egalalyuundo-  
hotola komutsenokwe mu-  
pe onzapo yesimano no-  
mbimbeli, egongamwele  
lyombepo. Osho ya landulathana  
ngeyi sigo omuhugunini.

Konima yoshituthi moshinyanga mosikola yokombanda, aapewi yu-ndohotola naandohotola naaprofessori naasita naazimini naantu ayehe ya landulathana momukweyo omule ooyali nooyali, yu uka mongerki onene yomumbisofi gwaHelsinki (cathedral), moka mwa ningwa omagalikano nomahambelelo koshipala shaKalunga. Oga ningwa mehiko lyo orkaan, mokiimba omaimbilo. Mwa ningwa wo euvitho nokuoro ya imbi.

O' opwa li sha ta!

Esiku lya landula, omukuluntutumi omusamane A.Hukka pamwe negumbo lye oya ningile omundohoto-

la L.Auala oshituthi megumbo lyawo. Omwa li aayenda oyendji naanenentu, aatumwa wo aape naakulu, ye ya okuhalela omumbisofi elago neyambeko. Aayenda ya pakelwa po okoofi noomboloto niikuki kumeme Leena.

Komatango ogesiku tuu ndyoka pwa ningwa ishewe oshituthi shepandulo mongerki yEtumo, moka mwa li aapopi, omundohotola Peltola, ngoka opo wo a pewa egala nontzapo yuundohotola, omundohotola omumbisofi Gulin nomundohotola omumbisofi Awala. Moshituthi shika mwa imbwa wo okwarteti kaastipendiaati mOshiwambo. Eimbilo ndyoka ye li

imbi olya totelwa owina oshituthi shika komusitipendi omwiilongi gwomusiki M. Namalenga. Neimbilo olya li lyoopala shili. Oohapu dhalyo otadhi landula:

Halleluja Halleluja.

Hambelelelwa Halleluja.

Simanekwa Kalunga Halleluja.

Muukwaluhe wa simana nopevi owa tseyika Omuwa Halleluja.

Olye nga ngoye Tate olye Kalunga nga ngoye,

Nuudhiginine woy' olye a fe Ngoy' Muule mpe wa tala aamoy' oohepele.

Halleluja Halleluja,

Tangwa Omuwa, hambelelwa Halleluja.



*Dr. L. Auala nooyakwawo oyuuka mongulu yoshituthi moku ka pewa oonkatu dhuundokotola.*

## OVAKWALUTHER NAVA LONGELE KUMWE

Mefimbo loshivilo sheyelifo leita-velo shomido 450. Ovakwaromakatoli nOvakwaLuther muAmerika, ova lombwelwa va longele kumwe nde va udafane moukumwe wecclesia nova dane momhepo imwe aveshe oshivilo shaLuther. Ovakriste vomaitavelo aa avalu otava pula shiimba kutya: Omolwashike okudja nalenale ope nokatongotongo pokati kOvaromakatoli nOvakwaLuther nde va fa va kala ngaha lule ihava udafana? Ope noinima imwe oyo nge to i koneke, oto mono naanaa kutya, otashi pumbiwa shili, nande ope nomatongoko, omaitavelo aa avalu a longele kumwe. Omafatululo amwe oyaa:

Molwashi olo ehala laJesus kutya, ovakriste aveshe va kale vamwe, opo oonyuni u itavele kutya, oove wa tuma nge, Joh. 17: 21. Ondjovo ei oya kwatelela mo aveshe nde oyo omukangha. Tashi ti ovakriste aveshe, haOvaromakatoli ashike nde OvakwaLuther yo, nosho ovashitwa aveshe vomaitavelo amwe, ova kwatelelwa meindilo eli. Oukumwe otatu hovele fiku hatu fatukilwa kutya, otu nokala vamwe. Tu kale vamwe molutu laye, mOmhepo yaye, meitavelo limwe, shaashi Omwene umwe, eitavelo limwe eshasho limwe, Kalunga umwe Xe yaashishe. Ef. 4: 4. Kashi na hano mbudi eshi pe nomaitavelo maha-

**Hambeleleni Omwene, osheshi Ye Omuwa! Osheshi efilonghenda laye otali kala alushelushe!**

EWI

LYEVANGELI

MORADIO

Otundi 8.30 ongulohi

Ometa 31

26.11.67 Lukas Dama.

17.12.67 Omaimbilo nowandaha omumbisofi L.Auala.



pu a yooloka mehongo, meudifo, momalongelokalunga nomomaidilo, shamha twa shiiva kutya: **OMWENE UMWE JESUS KRISTUS.**

Eudifo levangeli ola twimina hano ovo tava ka kana. Ngeno tu li umwe mOmwene, notwa hangana nde hatu yandje oshihopaelelwa kounyuni, ngeno kape nomatukauko.

Onghe meengerki nomoyoongalele yeengerki, ohaku kondjwa ku indililwe oukumwe wovakriste, eudafano, eshiivafano, elongelokumwe nombili imwe. Kape nomupika womukwao. Elongo limwe la yuka otali wapalele keshe omwiitaveli.

Meitavelo lopaRomakatoli omu noinima ya faafana noyopaLuther. Omayooloko okwa dja momadiladilo omunhu, nde Kalunga ta shiiva oshili. Unene okwa hala okuxupifa keshe umwe. Aveshe ova pukamo mondjila, kape nomuyuuki nande umwe. Ou omuyuuki oye ou ta hepaulula amatimba aye nde te a diminwa po. Nopexulilo lomafimbo Jesus ta ka yoolola eedi moikombo. Kuye taku ka ongala ovakwaunyuni aveshe vomalaka noilongo nomaitavelo nomaukwatya e lili noku lili, nde ote va pangula keshe umwe pailonga yaye. Omurora ino sheka hano OmukwaLuther nOmukwaLuther ino sheka nande olye. Onawa ku kale eindilo limwe tali kwatelele mo aveshe kutya: Omwene, tu ninga vamwe mwoove. Tu shitulula u tu ninga atushe ovafyuululi vomwenyo waalushe.

### ESHIIVIFILO

Paife efimbo ola fika, ovo mwa hala mu leshe oshifo shOmukwetu omudo tau uya 1968, mu lishangife nde mu mbeshitele divadiva oshifo sheni. Tu endeeleni diva fimbo inatu uya pexulilo lomudo. Oikwatakwata ohai nyika edilo, ino tokelwa vali ngoudwaali.

Ou iho tambula shito oshifo, djamo meemhofi nde mbeshitela diva. Ou iha leshe oshifo okwa fifikina.

**Oshifo shOmukwetu** otashi landwa kodula 60c mOwambo, kOushimba nOkavango 80c molwostombe. **Oshifo shEhangano** otashi landwa momudo 15c mOwambo, kOushimba nOkavango 20c molwostombe. Tu endeleele divadiva!



N. Shinana

## OTU LI PAMWE NAKALUNGA

Kalunga ketu megulu okwa tseyashihe twa pumbwa manga inaatu tsoongolo tu galikane. Ihe okwa hala tu holole ohole yetu momagalikano.

Anna, okwa li omuntu ngotse, a li omukulukadhi ashike gwomegumbo, ihe okwa li e neitaalo. Anna okwa galikana kuKalunga nokwa pewa ngashika a indile. Kalunga okwe mu uvile egalikano lye, oshoka olya li lyu uka.

Ihe otatu vulu tu galikane nokugalikanununa, ihe itatu mono ngashika twa indile. Pamwe tatu indile iinima inaayi tu opalela, yaa nekwatho lyasha noomwenyo dhetu.

Otatu dhiladhila pamwe kutya, Kalunga ina uva egalikano lyetu. Ihe tu kaleni neitaalo kutya, Kalunga oha uvu omagalikano getu nokwa hala oku ga yamukula.

O! Omuwa, tu longa okugalikana iinima mbyoka tayi tu kwatha nawa palutu nopamwenyo. Osho tu galikani.

„OMUKWETU” oha zi mOniipa.- Omukuluntu gwoshifo/ Hoofredakteur: Omumbisofi Dr. Leonard Auala, amushanga gwoshifo/ Redakteur: Leonard M. Shemuvalula, Oniipa, Pk. Ondangwa.- Ondando komumvo mOwambo 60c, mUushimba nOkavango 80c. Oofuto nomambestelo naga tumwe kOmukwetu, Oniipa, Pk. Ondangwa.- Moka hashi nyanyangidhwa: FINSE SENDINGDRUKERY, OVAMBOLAND, S.W.A.