

OMUKWETU

Oshifo shOngerki onkwaevangeli paLuther yomOwambokavango/Die Tydskrif van die Evangeliese Lutherse Ovambokavango Kerk

No. 16

AGUSTE

1967

NINGENI OMUTI MUWA, HAMUTI MWI

Mat.12:33-37.

Motekisti ei Jesus a hala tu koneke eendjovo detu, oitya nomatumbulo etu, oyo okanya nelaka nomilungu detu tai tumbula. Osheshi okoitya neendjovo detu vene hatu pangulwa nde hatu ufwa kutya fye ovayuki, ile fye ovalunde. Oshike hashi piti mokanya koye? Oitya ilipi po ho popi?

Jesus ta ti: Osho shi yadi monhulo, osho tashi popifa okanya. Omunhu muwa, oha popi ouwa. Ndelene omunhu mwi, oha popi owii oo u yadi muye. Osho twa shiiva, omuti mulula, otau imi yo oimati ilula. Itashi dulika u ime oimati inyenye, okuninga pwa ningwa sha. Onghe ou ta diladila okupopya eendjovo diwa, monhulo yaye mu yadi oululu, ite shi dulu nande.

Onghe okulifefa nokulivandeka oku noshiponga. Ndelene meendjovo dange mu kale oshili imwe aike naoyo i li momutima. Ou ehe li ngaha oye ongangala. Onghe nena hatu longwa: Inamu kala kuvali. Ningeni omuti muwa, tau imi oimati iwa. Shipu a kale shapo mwi ashike, ile a kale muwa ashike. Oshiponga tuu eshi Jesus te shi popi nokulondwela, osheshi tashi twala fiyo omepangulo laalushe. Tu didilike: Keshe ondjovo yongaho ovanhu tave i tumbula, otave ke i pulwa efiku lepangulo.

Lutivali, Jesus ota ulike oshiponga shokukala kuvali. Oshiponga shokulya eemhanda mbali, shokukala oku wa twa oku wa lyata, okukala moshipa shodi, ei aishe Jesus te i ulike oyo oiponga. Jesus okwa tumbula ponhele imwe ilili: Ou a hala okulandula nge, ne lidimbike. Osho twa longwa: Kape na ou ta dulu okukalela oovene vavali, ota tondo umwe nde ta fimaneke mu-

kwao Inamu longifa elaka kuvali. Elaka li tukane nde li hambelele Kalunga ngeno, eshi oshiponga.

Oulunde ou tau holoka meendjovo detu nande twa fa ovayuki, oo oshiponga. Opo tuu opo Jesus ta pula elidilululo. Ou a shituluka meni, nokombada okwa shituluka. Oilonga yaye, eengeeda daye nokupopya kwaye, aishe oya shituluka. Eshituluko eli olo Jesus a hala mufye. Okwa shiiva kutya, momandjadja nomomapunga moukoto womunhu, omo mwa fudama oulunde. Kombada itau monika nawa, osheshi omunhu okwe livikila oshikafa shodi.

Opo tu henuke epangulo, tu kotokoleni elaka. Tu hepaululeni oixuna yetu tu diminwepo. Ohonde yaJesus otai koshola oulunde nonyango keshe, fye tu dule okudulika kelombwelo laye: Ningeni omuti muwa noimati yao oiwa.

L.M.Sh.

Eso lyohaluka omolu IKOLITHA

Popepi nomukunda gwetu Oshali, meti-15/7, opwa ningwa oshituthihaha naamboka wo yomukunda gwetu oya ka hahele ko onyama dhawo omolwomikaga tuu dhi li apehe.

Aantu yamwe oye etele mo wo iikolitha, osho ngaaka ohaha tayi hahatayi li yo tayi nu.

Omukulukadhi gumwe meme Maria Nakanyala Lumbu, nani a fa a kutha ga gwana. Okwa zi mo eta yi kegumbo a fa ngaa e li nawa. Sho tuu a yi mondjugo, iikolitha tayi londo mo momutse, inayi hala mo we sigo ye mu tonono a kotha thilu.

Omunona gwe nani a penduka a hala a yame, ae, yina okwa kotha thilu, omunona ta lili, yina ke mu uvite. Omunona ta kookaya nondjugo ayihe ta kongo yina. Mokukookaya a adha sigo omomulilo. Okwa yimo iika-

ha nosho ngaaka a gwilemo ongali, onkome ya thikile komakala gomulilo. Osho oshihalulu oshinene sha zi momunona, ihe nando ongaaka yina ina uva nando osha. Omunona a si waa!!! Omalovu, gaa ndjaAmunjela gwaShimpanda ga ningi omanene sho omudhimba gu li meziko yina yomunona e li pugo. Ano sho tuu a ka papudhuka, uuluyi otau fuluka momutse owala.

Aamwameme aaholike, Omundonga ota ti: Omuvuli iha nu iitenga iyali, ota laminine okaana. Owa ti ngoye oto nu to yeleke? Oto yeleke tuu ngiini wa ti? Uukolwe kau nondjele. Omukwanyama ta ti: Ino lyata kiipeta yoongongo oto kolwa, ee?

Aamwameme, Ombimbeli yetu otayi tu lombwele: Inamu kolwa komaviinu moka hamu zi uuwinayi kehe, ihe udheni Ombepo Ondjapuki yaKalunga. Ef. 5: 18. Nonale inandi uvako nani ovelise ndji. Onda li nda dhiladhila omauwinayi, goontamanana guu-



halu wiipala, ihe nani nogeso wo lyombaadhilila ngaashi omunona ngu a sile moluhepo olunene lwomulilo.

Omunwameme omuhoolike kotelala ihe iikunuwa.

Johannes Guendama.



OMUKWETU

AGUSTE 1967

LINEKELA KALUNGA HASHIMWE SHI LILI

OMUKWETU ota kundu ovaleshi vaye aveshe ngaha: Alula omadiladilo nelineekelo loye moishitwa nomovananghono vounyuni. Kanghama okafimbo koshipala shOmwene u mu pandule eshi e ku endifa omudo nomudo fiyo onena.

Tu imbileni emanya lexupifo letu. Tu shakeneni koshipala shaye nokuhambelela, fye tu mu imbile omaimbilo ehafo, osheshi oye omunene. Oye ohamba inene kombanda yoikalunga aishe. Oye e kwete meke laye omukangha wedu. Oye ta pangele eemhunda dinene nodile. Efuta olaye naishe i limo. Tu tweni eengolo koshipala shOmushiti wetu. Ino tala momunghulo tala kuYe mwaaishe

Seblon Nekongo, Tsumeb, ota holola aantu yaali ya si kiiponga yihauto muTsumeb. Okwa pangula iikolitha kutya oyo oshiponga nota ti: Tu idhilikeni iikolitha. Tu yeni mehangano lyaaaidhiliki yiikolitha.

OOMBAPILA OOMPE DHOKUTUMITHA OONGALO

Aatonateli yitayingerki aasimankwa, ombapila ndjika otayi thindikile kune ombapila oompe dhokutumitha oongalo dhongerki. Ombapila ndjoka yokutumitha oongalo oya kolekwa kE-pangelongerki lyeti 24-25/7/67, oshitololitho 21. Otandi tumu kune ombapila dha yeleka omimvo 4 1/2, dhi punguleni miinyanga yitayingerki, ne mu kale tamu dhi topolele omagongalo, egongalo kehe tali pewa ombapila 8 komumvo. Omusitagongalo nenge amushanga ngoka a pya miinima yedhiginino lyomambo, ota udhitha ombapila mbali oshikako kehe ngaashi yi igilila haye shi ningi moombapila oonkulu. Oombapila ndhoka mbali dha udhithwa, otadhi tumwa adhihe komutonatelishitayingerki pamwe niimaliwa yoongalo ndhoka tadhi tumwa ngaashi hashi ningwa shito. Omutonateli sho a konakona ombapila noku dhi yelekanitha niimaliwa mbyoka ya tumwa, ta kakateke okwitansi yiimaliwa e yi taamba, kombapila ndjoka ta shunithile egongalo, naanaa ngaashi shito.

Omutonateli sho a mono ombapila ndhika niimaliwa ayihe yoongalo dhoshikako shoka moshitayingerki she, ota kutha wo ombapila mbali dhooludhi nduka, e ta nyolele mo omagongalo agehe nkene ga gongele oshikako shoka. Ombapila yimwe te yi tumine ombelewa yongerki pamwe niimaliwa yoongalo ndhoka dhuuka kiiketha yongerki, manga yimwe te yi thigile momapeko ge onzapo yokomongula. Shika otashi ti, omukalo gwombapila yokutumitha oongalo otagu kala gwa faathana, gwegongalo koshitayingerki ongaashi gwoshitayingerki kongerki.

Omayooloko ge li po, pehala lye-siku nenge egongalo, egongalo otali nyola po esiku lyegongalo ya taambwa, manga oshitayingerki tashi nyola po edhina lyongalo. Patiyali, momisinda kamu na ehala lyiilya, ihe yi kale moshifo shi ikalela moka omusita te yi tula kumwe pehulilo lyoshikako, a tale iimaliwa ingapi mongalo ndjika naandjiyaka, e yi tenteke mokampungu kongalo ndjoka. Patitatu, kolulyo lwombapila otaku monika efatululo tali holola iimaliwa oya tumwa momalupe genipo.

Gweni,

M. Ngipandulua.

Omutonatelidhigininiwiwe

OONTOKOLWA DHEPANGELONGERKI

1.

Epangelongerki lya pandula omusamane U. Poikolainen sho e ya okulongekidha oshilonga shomokati **kaaposi**. Epangelongerki otali pandula wo epangelo lyaHolomende, sho moonkundathana dhawo naPoikolainen lya uvaneke okukwatha oshilonga **shomaaposi yoshigwana shetu**.

2.

Epangelongerki lya konakona nolya koleke efaneko lyelandulathano lyiigongi tayi ka ningwa komusamane **Matti Koponen**, ngoka te ya muAguste a talelepo ongerki yetu. Epangelongerki tali halele olweendo nduka Kalunga e lu egululile iyelo.

3.

Epangelongeriki tali londodha natango omagongalo ngoka ga hala okwiitungila oongerki oompe, ga gongele nombili iimaliwa, sigo tayi gwana, nando tashi pula ethimbo ele, opo omagongalo gaa ye muupyakadhi omolwoongunga, ngaashi pwa londodhwa nale montokolwa yalyo onti-5yEpangelongerki lyeti-2/9 neti-8/9/1964.

OMBILI KAALESHI

Eopaleko lyepuko lya holoka mokunyanyangidhitha oshifo shOmwetu No. 15 mepandja eti-3 moshipopiwa shomukuluntutumwa mokatopolwa okatiyali okuza kehulilo. Opu nokukala ngeyi:

Etokolo lyokutameka oshilonga shetumo mOwambo lya li lyaa shi epu. Ihe etokolo lya pya. Ewilikongundu lyEhanganotumo lyaSoomi olya dhiladhila muule nolya indile uyelele wOmuwa, sigo lya holola efaneko ndyoka moshigongi shEhanganotumo sha gongala eti-12 lya Juni 1867. Efaneko lya ziminwa ihe ekoleko lyalyo lya undulwa natango opo pu kongwe uyelele auhe wa vulika kombinga yevi ndiyaka lyokokule. Omuwilikitumi gwEhanganotumo lyaReini, ondohotola Friedrich Fabri, okwa tumu omafatululo ga pulwa. Ombilive ndjika oya nyolwa esiku eti-15 lyaJuli 1867. Omusamane Sirelius a yi natango noshilyo shimwe shEwilikongundu kuDuitsland kuBarmen nokwa uvathana nawa iinima ayihe nEhanganotumo lyaReini.

Moshigongi shopaulumompumbwe shEhanganotumo lyaSoomi sha ningwa esiku eti-18 lyaSeptemba 1867, mwa kolekwa etokolo lyokutuma aatumwa Aasoomi mevi lyAawambo. Osho ngaaka Kalunga a enditha oshilonga she naanaa omimvo 100 sho dha piti ngashingeyi, opo Owambo ya ningi Epya lyosilongatumo lyongerki yokuSoomi.

Amushanga.

A YI KEVULULUKO

OMUTUMWA, Kuku Hilma Kupila, a mana oondjenda esiku lyEtumo, eti-9 lyaJuli, nuumvo 1967. A yi kevululuko lyaana yaKalunga.

Hilma Lydia Kupila okwa valwa omumvo 1886 muJanuali eti-29. Okwa kala muuyuni omimvo 81 noomwedhiantano nomasiku gahetatu.



Efano ndika lye olya li lya fanekwa omumvo gwa yi 1966 muJanuali esiku lyevalo lye sho a gwanitha omimvo 80. Okwe li pendje yemwene omumvo gwa yi muMalitsa.

Omulongikadhona Hilma Kupila okwe ya kOwambo omugundjuka gwomimvo 25 adhike, e ya omumvo 1911, omumvo Onandjokwe ya tungwa. Omulongi Hilma Kupila okwa shuna kuSoomi omukuluntu gwomimvo 61. Okwa kala ano omulongi gwAawambo nAakavango omimvo 36; nonando pokati a ka fudhilepo ngaa lwaali aluke kuSoomi.

Oshilonga she oshinene mOwambo komeho giikwawo ayihe yilwe, osho okulonga mooskola dhi ili nodhi ili; unene mooseminari moka mwa putudhwa aalongi, okuza tuu koseminari yotango ndjoka ya dhikwa omumvo 1947. Okwa longo wo mooskola dhaayevangeliste nomoskola yuusita. Na omolwompumbwe yaalongi mbo ya pita oseminari itaa gwanene oombinga adhihe dhOwambo, okwa li a ningile wo aakriste yamwe iigongi yomalongekidho, iiwike niwike, moka ya longekidhwa nkene ye nokulonga oskola, o po ya ka ninge aayakulilongi. Aalongi ya tya ngaaka inaa pita oseminari, Hilma Kupila okwe ya sile shili oshimpuyu omumvo kehe, oku ya ningila iiwike yomalongekidho; mbyoka ya li ya lukwa ooskola dhomafalo. Naalongi ya tya ngaaka oyo tuu ya taandelitha shili elongo mOwambo ayihe noya hwameke momikunda odhindji ehala ewanawa lyokutaamba

Evangeli lyehupitho. Onke ombinga onene yaayevangeliste noyaasita noyaalongi mongerki yetu, oyo aaputudhwa yaKuku Hilma Kupila.

Moshilonga she shokulonga noku putudha aalongi, Kuku Hilma Kupila okwa gandja shili oshiholelwa oshiwanawa sheidhidhimiko. Okwi idhidhimikile shili ugoya auhe waalongwa ye, sigo a likola edhina lyesimano oye "OMULONGI GWOMAGOYA."

Omumvo 1947 sho a shuna kuSoomi, okwa tsikile oshilonga shEtumo hwiya, mokuhololela omagongalo gomuSoomi oompumbwe dhaalongi kOwambo nOkavango. Okwa longo wo aatumwa aagundjuka elaka lyOshiwambo muSoomi muHattula. Nomolwepandulo okupandula oskola ndjoka, aatumwa oye yi luku "Universiti yomuHattula."

Sho twa monathanana na ye lwahugunina pehulilo lyaMei nuumvo, okwa li a kola nokwa li a kundilepo aaputudhwa ye ayehe naakriste ayehe yOwambokavango nekundo ndika: "Tatu ka monathaneni megumbo lyaTate megulu." Nani oloyo lya li elaleko lye.

Kalunga na hambelelwe omolwa shoka e shi longitha omutumwa nguka gwe.

Omuniyoli oye wo gumwe gwomaa putudhwamwana yaKuku Kupila.

OVAPOFI OVAWAMBO TAVA KA KWAFWA

Ngaashi twe shi uda nale, oshilonga shomovapofi otashi longekidwa mOwambo. Ovapofi etava shangwa nomaongalo mahapu va tuma nokuli omadina ovapofi ndele aa inae shi ninga natango, taa kumaidwa e shi ninge diva nde otaa ka tuminwa eembapila omo tamu pulwa oinima imwe yovapofi tai pumbiwa.

Epangelongerki ola tokola nokuli kutya, meongalo keshe mu kale omukwafi wovapofi. Ovawafi vamwe va ongala nokuli mEngela nomuTshandi oshivike sha xuninwa shomuJuli nde va pukululwa va shiive okukwafa momalongekido oshilonga eshi.

OMULONGI WOVAPOFI TA KONGWA

Okwa fanekwa yo pu dikwe oskola yovapofi. Paife otaku kongwa ovalongi vavali, umwe omukadona umwe omulumenhu opo va tumwe omudo tau uya kuRepublika va ka deulwe okulonga ounona ovapofi. Ngenge ove omulongi ile to ka pita neudo moseminari nde ove u udite u nehala okukwafa moshilonga eshi, shangela omubishofi ile omukulunhutumwa u va shiivifile ehala loye manga ohani Septemba inai xula po.

Ofye atusheni twa ifanwa kuKalunga tu kwafe ovanhu ve noluhepo. Ovapofi va hepa unene mokati ketu. Pwilikina eifano laKalunga u mone onhele oyo ove newe ilongekidilwa kuKalunga moshilonga eshi shomovapofi yo.

Ulho Poikolainen.

EKAKAMO LYEVI LYA DHIPAGA AANTU OYENDJI

Onkundana ya zi muGARAGAS, ya hokolola kutya, aantu ye vule 100 oya si moshiponga shekakamo lyevi muVenezuela.

Ekakamo lyevi olya ningi moosekunde 90 nolya teyagula omatungilo nuulando. Miipangelo mwa kundanwa kutya, aantu oyendji ye vule 1,600 otaa pangwa ya lemanekwa naantu 200 otaa pangwa sho ya ngwandjagulwa. Yamwe ishewe pamwe oye li natango kohi yomakumukila.

OSHIKOLOLO SHOMEGUMBO

SHA KALUNGA SHI PENI KALUNGA

Ovanhu nale shaa va hala sha shipe, ohava pingakanifa, oinima nakwakao.

Pefimbo eli lopaipe ovanhu ihava pingakanifa, ndele ou a hala sha shipe ote lilandele noimaliwa. Ovanhu hava longifa unene oimaliwa. Kuvahapu oi li po nokuli ya ninga oikalunga yavo. Umwe ota dulu nokuli okukanifa efimano, oukolele neendunge omolwayo.

Otu na okupangela oimaliwa yetu, hayo tai tu pangele. Otu na yo okulongifa oimaliwa yetu komukalo ngaashi tashi teelwa.

Ngeno ohandi mono komwedi o-ndjambi i fike apa R10.00, ngeno ohandi i longifa komukalo ou:

R5.00 moikulya noshu tuu.

R1.00 moidjalomwa

R1.00 okulandela sha shipe meumbo

R1.00 melihongo, ngaashi okwiilandela omambo.

R1.00 ohandi tuvikile

R1.00 moshilonga shaKalunga.

Mark. 12: 41 otai tu ulukile kutya, Jesus ota tale nokukonenena, ohatu yandje shi fike peni mongalo. Nota tale yo oyo hatu fiye mokandjato ketu, eshi hatu kufamo ei hatu umbu meongalo. Omolwashike ngenge hatu ka umba ongalo, hatu hoolola meendjato detu okapeni naanaa aka kanini kwaaeshe? Nande otu shi shii ohatu yandjele Kalunga?

Momudo ou woneudo opa pita eedulo 100, eshi muSoomi mwa ongelwa ongalo yotete yetumo. Ohatu hale natango Omwene e tu xwameke mokuyandja tu mu pe mweei ei tu pa. Ngaashi naanaa okambo aka taka ti: "Sha Kalunga shi peni Kalunga." Okambo aka oka lundululilwa yo nomOshisoomi, ngaashi yo ke li mOshiwambo, ohaka landwa ashike 5c. Ohatu halele keshe umwe e ke lileshele.

Omukriste keshe okwa ifanwa a tandavelife Evaengeli loshilongo shaKalunga komesho. Neliko loye oto dulu yo oku li xumifa komesho.

"Sha Kalunga shi peni Kalunga."

Mal. 3:10.

Aune Autio.

EHANGANO LYAAKULUKADHI

Aakulukadhi nani inaa hala we ya kale moomposi. Oya hala okutota EHANGANO LYAWO LYAAKULUKADHI lyokulonga oshilonga shetumo. Omukulukadhi gwo tangotango maakulukadhi yOwambokavango a tameke edhiladhilo ku holoke ehanganolyaakulukadhi, oye meme JOSEFINA ELIA, megongalo lyOngwediva.

Meme Josefina okwa nyolele komukwetu nokwa indile moshifo shomukwetu mu tseyithwe omadhiladhilo neindilo lye kaakulukadhi ooyakwawo, ya tameke ehanganolyawo. Oshinyolwa she sha nyanyangidhwa mOmukwetu gwonomola 11 kopardja 8. Omanenetumbulo moshipopipiwa she otaga ti:

"Tu yelekele okutota ehanganolyetu medhina lyUukwatatu. Ngele oshipu shi longwe. Tu zeni momasiga aakulukadhi aakwetu, tu longele Omwa nokashona ketu. Tu gongeleni sha shomeliko lyetu, tu tote wo okaketha ketu aakulukadhi, tse tu tale kutya mepya lyetumo otaka longo mo shike. Okaketha tu ka hangene nuupenda wOmbepo. Okaketha kaakulukadhi ongondjamba onene, tu yi kuthileni iikondjitho yetu aananguwo, oshoka omuhangenwa iha sindi. One yomOwambo nokOkavango, tu yeni mehanganolyetu. Tumeni elaka komukwetu, tse tu uvathane kutya, otatu ka enda ngiini." Osho meme Josefina a nyolele Omukwetu.

Omukwetu sho gwa ka leshwa momagongalo nomomagumbo, ogwa pendutha ehalo lyokutota ehanganomaakulukadhi. Osho Omukwetu a yakula ishewe ombilive ya tya ngeyi:

"Engela, 6/8/67. Ofye Elisia Haufiku na Emilia Muafufya, otwa hala mehanganolovakulukadi molwo-shilonga shetumo, ngaashi sha popiwa mOmukwetu No.11 kopardja laxuuninwa. Tangi."

Nando mpaka pwa tumbulwa omadhina gamwepo, onkene aakulukadhi oyendji oya holola ehalo lyawo okuya mehanganolyaakulukadhi. Tashi gandja omukumo kungoye, u tume komukwetu omadhiladhilo goye. Tseyithila wo ooyakweni oshitotwanima shika oshipe. Kalunga ne tu yambekeni.

OMAMBO OMAPE OGA HOLOKA ISHEWE



1) Fimbo inatu linyolifa okuya kOuvalelo Uyapuki, otu nokulikona-kona tete ngenge tu li tuu nawa okulya nokunwa Ohonde nolutu lwaJesus Kristus. Omolwomhumbwe yokulikonakona tete, embo **OMALINYOLIFOUVALELO UYAPUKI** ola holoka paife. Ola nyolwa mOshikwanyama komufitaongalo Filippus Shikomba noli li divadiva mostora yomambo mOniipa. Otali landwa 15c. Shaashi ola pumbiwa unenenene, onghendelela u li ilandele paifeeshi.

2) Okambo okape kedhina **OKAMBO KOMUVU** ka longekidhwa kuHiskia Haufiku, oka holoka wo mostora yomambo. Kalunga ta longo maavu yomaludhi nota kala meyakulo kehe moka aapangi noondohotola taa yakula medhina lye. Omukumo gwokombanda tagu pumbiwa shili momayakulo gaavu. Onkene Okambo komuvu sho ka holoka ngashingeyi, ngokate ka lesha ota tsuwa omukumo nokumona openi oluthithiya lwoonkondo te dhi pumbwa lu li. Otaka landwa 10c. Ilandela ano mbala.

OSHIKOLOLO SHAAGUNDJUKA

“IKOLELELA” OLYO EDHINA LYASHO

Esimano olyaKalunga ngoka a pititha nawa iigongi yonale nonuumvo mongerki nomiitayi yayo.

Mpaka opu na etseyitho nehio kaagundjuka yongerki ayihe kutya: **OSHIGONGI SHAAGUNDJUKA YONGERKI AYIHE** otashi ka kala **KONAKAYALE KALUNGA NGELE A HALA ETI-28.9-1. 10. 1967.** Edhildhilo tali ka pangela oshigongi olyo: **EKUMIDHO TALI ZI KOMUWA “IKOLELELA” (Jos. I:9).**

Elalakano lyaalongi olyo:

1. Aagundjuka ayehe ya kolekwe meitaalo lyawo nomomakondjo gawo agehe.
2. Okulonga oshilonga shEtumo, opo oshilongo shaKalunga shi taandele apehe.
3. Oonkundathana okuhumitha ayihe mbika komeho nosho tuu. Otatu ku indile, opo u “**IKOLELELE**” nokwiitula omukumo mokugalikanena oshigongi ngaa-shi shito.

Ngele oku na omapulo naga thike komutseyithi:

K.Dumeni,
P.O.Box 25,
Oshakati,
Uukwambi.

IKANKAMEKA POMUWA

Mauno Nikodemus, Ogongo, Uukwambi, ota nyola ngeyi iinima itatu:

1) Otse aanakefi, mokulonga eliko lyetu, tu tseyeni Kalunga oye te tu yambeke mokulonga eliko lyetu. Oye ta gandja oonkondo noondunge. Tu kaleni hatu yeni kelongelokalunga. Mona ngaa ethimbo lyokuya, ino shendjelekwa koonkondo dhokolutu lwoye. Nane iikumbu mookefi inamu sa uunye okuya kelongelokalunga mu uve ewi lyOmuwa.

2) Aashunimonima indileni oonkondo kOmuwa mu kale hamu yi komambo. Kongeni ishewe oshipala shOmuwa oye ote mu taamba nokwe mu hala.

3) Momagumbo tu putudheni aana ya kale ye nomikalo dhokupopitha aantu, hakutya ashike wu uhala opuwo. Ndi shi otashi ti natse yene inatu putuka osho tu li.

4) Nge we ya melongelokalunga mongerki, ino popyapopya we noku-kudhila. Kuthako shili tango oongaku koompadhi dhoye, oshoka eha ndyoka eyapuki.

KAAILONGI (PRIVAAT KANDIDATE)

Olyo enyanyu kutse kutya, aagundjuka ya hala okwiikumitha komeho. Tu shi shi kutya, koombinga noombinga mOwambo omu na aalongi naagundjuka yalwe wo mboka taa ipyakidhile okwiilonga, opo yi ilongekidhile ekonakono lyaJunilo. Shoka oshinima oshivanawa unene.

Mokwiilonga ngaaka ngele to ilongo waa li moskola, ohaku pula **uudhiginini uunene nokwiitulamo kwashili.** Ngoka ta longo ngomulongi ootundi odhindji, ongulohi okwa vulwa nota pumbwa omukumo gwa gwana, kaa ethe okwiilonga kwe, ihe e ku tsikile esiku nesiku. Ihe aantu ya tya ngaaka ohaa monika tayi ilongo pakorrespondensie nenge pakukonakona omambo gu uthwa, sigo iinima ye yi tseye. Otaa nyola omakonakono notaa piti.

Ihe mokuyakula aalongi, onda dhimbulula kutya, opwa pumbiwa epukululo lyasha, oshoka haayehe haa piti.

Oshinima shotango osho shika: **Ikongela omambo pethimbo.** Ito vulu okwiilonga moomwedhi dhimwe iinima mbyoka to pulwa. Oto pumbwa ethimbo ele, u yi ileselele noku yi konakona nokweendulula shoka we shi lesha. Embo ngele to li lesha lumwe aluke, oto ka nyengwa okudhimbulukwa iinima nawa. Moskola omulongwa oku na ekwatho ndyoka kutya, iinima sho te yi pulwa nomapulo otage mu kwatha okudhimbulukwa. Oshinima shoka tashi mu kwatha wo osho okweenda kashonanakashona. Onkee ano tandi ti, **omwiilongi nii kongele embo pethimbo noku li lesha noku li leshulula,** opo a tseye shili shoka shi li mo.

ZA ONTUKU OKAHALU KUUGUNDJUKA

Omugundjuka omukwetu, owa zi tuu muhalu womuugundjuka woye? Nenge omo uli natango? Omuna gwomuntu okuli posheelo.

Za okahalu kuugundjuka, lalakanena uuyuki, eitaalo, ohole neendathano lyombili naatilikalunga. Yanda ihe omapulapulo nomapopyapopyo guugoya gaa fele, oshoka otaga eta oontamanana. Tashi ti manga tuli aagundjuka tu ze naanaa okahalu ka tya ngaaka. Tu longele Omuwa manga tse aagundjuka, oshoka ethimbo olye endelega.

T. P. Ekongo.

Oshinima oshitiyali: **Hogolola oshilongwa shimwe nenge iyali mbyoka to yi ilongo naambyoka to yi nyola momumvo.** Ngele to kambadhala iilongwa ihamano, oshita, oto ka ndopa ashike. Omulongi ita vulu okugwanitha iilonga ye yuulongi nokwiilonga nawa, ngele ta yekelele ayihe oshita.

Iilongwa ayihe kumwe omuntu e noku yi pita manga inaa mona onzapo yoJunilo, oyo tayi ka kala iheyali okuza 1968. Nuumvo onzapo otayi monika natango kumboka ya piti miilongwa ihamano, ihe olwahugunina ngaaka. Okuza omumvo tagu ya iilongwa oyi li iheyali, nomwiilongi e nokupita noopersenda 40 nenge dhi vule po, opo i imonene osertifikaati yoJunilo.

Oshinima oshititatu: Ngele to ka nyola Oshimbulu nenge Oshiingilisa nenge Oshindonga omumvo tagu ya, tashi ti pehulilo lyomumvo 1968, ikongela omambo gu uthwa **ngashingeyi.** Onawa unene ngele we shi ningi nokuli. Otashi kumitha ndje, aantu sho taye ya ya nyolwe omadhina gawo mombapila ya inskrywing, ihe omambo kaye ga na natango. Okunyola ekonakono kwa tya ngeyi oku nekwatho lyashike? Otandi gandja mpaka omadhina gomambo ngoka taga ka pulwa mekonakono lya 1968:

Oshindonga(Ndonga A)

- 1) **Robinson Crusoe**, omunyoli oye Daniel Defoe, Finse Sendingdrukkery,
- 2) **Uuyuni uukwanampinyuka**, omunyoli H.D. Namuhuja,
- 3) **Moshinkoti shaShakespeare** ”

Oshimbulu(Afrikaans A)

- 1) **Kaapse Weer deur Elmar Steyn**, Voortrekkerpers, of Twee vir 'n stuiwer deur W.A.Hickey,
- 2) **Thongwaneskop** deur Paul J.Smit, Horula Uitgewers,
- 3) **Wolraad Woltemade** deur Nienaber en Bona Pers Bpk. en ander eenbedrywe Boshoff,
- 4) **My Skatkis**, Nienaber en Schutte Bona Pers Bpk.

Oshiingilisa(English B)

- 1) **A Wind in the Willows** by Kenneth Grahame, Methuen's paperback edition,
- 2) **Fort Amity by Quiller Couch**, King's Treasuries Dent.

Oadresu yostora yomambo: **Die Bestuurder, Maskew Miller, Posbus 396, Kaapstad.**

Nomakundo gombili.
Lahja Lehtonen.

M. NGIPANDULUA TA YI MUAMERIKA

Amushanga gwongerki yOwambo-kavango, omusamane Matias Ngipandulua, ota yi kuAmerika e ki ilonge hwiya omumvo gumwe moskola moka Eino Amaambo ti ilongo ngashingeyi. Eilongo ndika tali pumbi-

wa shili, opo aayakuli yongerki yetu ya wape okulonga noku tu yakula nawa.

Tatu pandula wo Kalunga sho e egulula oompito kumboka taa ilongo muAmerika naambyaka taa ilongo noyi ilongo muSoomi. Otatu galikana wo, Kalunga a egulule natango iiyelo, opo ongerki yi mone aayakuli ya putuka nawa.



EHOKOLOLO LYOMAGONGALO 1966

IIKETHA YOMAHANGANOTUMO

Mongerki yetu omu na omahanganotumo ngoka ga holoka po kehawo lyOmbepo nokewiliko lyayo mooitaa-li yOmuwa. Iilyo yomahanganano ngoka oya thiki metokolo okulongela Omuwa gwawo manga ye nethimbo lyoopala oku shi ninga. Omahanganano ngoka oga etele ongerki eyambeko moshilongatumo shayo.

1. EHANGANOTUMO LYAAGUNDJUKA, olya totwa 1964. Elalakano lyehanganano ndika olya okulonga oshilongatumo pamukalo gwokutuma omuntu miilonga yetumo, ye omutumwa ngoka a pewe ondjambi kehanganano ndyoka. Aagundjuka oya indile kEpangelongerki li ya pe omuyevangeliste, a longe oshilongatumo medhina lyaa-gundjuka. Epangelongerki lye shi taamba nenyanyu nolya gaandja omuyevangeliste Edward Nghimuena ngoka a lan-gekwa muKongo mokati kAayeleele. Omumvo 1966, aagundjuka oya nyanyukilwa oshilonga shika ye shi inekelelwa kOmuwa okukala aatumwa momuyevangeliste ngoka, na sho ya dhimbulula oshiketha shawo sha mono eya- mbeko lyaKalunga, noka shi nuunyengwi wokumona ondjambi yomuyevangeliste omutyali, noya pewa Frans Kan- kondi ngoka ta longo kUutsathima.

Okuza 1964-1966, oshiketha shika shehanganotumo lyaagundjuka osha gongele iimaliwa yi thike R2983.09. Sha futa oondjambi dhaayevangeliste mboka yawo niifutwa iikwawo yimwepo yomoshilonga shaagundjuka, nosha hupithile 1967 R2204.92. Oshiketha shika osha adhika wo sha mono omagano ga zi pondje yaAfrika, ngaashi oongalo dhokuDüsseldorf, Duisland R891.00, nohashi mono wo iimaliwa hayi zi miigongi yaagundjuka mUu- shimba, mooskola dhaamati naakadhona nomooseminali dhongerki yetu.

2. EHANGANO LYAAPANGI, olya totwa wo omumvo ogwo tuu ngoka 1964. Elalakano olya ngaa ndyoka limwe nolyaagundjuka. Tango ya indile kEpangelongerki li ya pe omuyevangeliste gumwe, noya pewa Frans David ngoka ta longo kEkoka kuKongo. Patiyali ya indile omuyevangeliste omutyali noya pewa Jonas Shikulja ta longo kOmindamba. Momimvo ndhika ndatu, oshiketha shawo osha gongele iimaliwa yi thike R658.70, Osha futu oondjambi dhaayevangeliste mboka yaali niifutwa iikwawo ngaashi ekwatho metungo, nosha hupithile 1967 R86.42.

3. EHANGANO LYAASITA nalyo wo olya tameke 1964. Ndika oli na wo elalakano okufuta ondjambi yomusita ta longo metumo. Ehanganano ndika inali pula edhina lyomusita, ihe sho twa kala naasita yatatu ta longo oshilongatumo, gumwe gwomuyo oku li miikaha yehanganano ndika. Iimaliwa ya gongelelwa oshilonga shika kulyo momimvo ndhika, R223.66.

4. EHANGANO LYAANANGESHEFA AAWAMBO olya totwa 1965. Elalakano lyalyo, okukwatha miilonga yawo yi ende payuuki nokulonga oshilongatumo. Omumvo 1966, olya tameke wo okwiindila omuyevangeliste nepya lyetumo moka li nokulonga. Ehala inali monika mbala, ihe petameko lyomumvo 1966 ehanganano lya taamba omuyevangeliste Timoteus Jakob, ta longo mAayeleele kuKongo. Otali ka tameka okufuta ondjambi ye momumvo 1967. Ngashingeyi olya gongela R104.72.

5. EHANGANOTUMO LYAALONGI Aalongi oya kala ethimbo ele ya yuulukwa okutota ehanganotumo lyawo, ihe inaya mona ompito yokugongala pamwe, opo ya thike metokolo. Moshigongi shawo shoka sha li sha gongala kOkahao nuumvo, oya tokola ehanganano ndika li totwe, noye li tamekitha niimaliwa R82.00.

Mpaka otatu dhimbulula kutya, omahanganotumo ngoka oga etele ongerki momimvo ndhika ndatu iimaliwa R4052.17. Ngomuntu oto ti osima, ihe aawe, oshilonga shawo kashi shi osima, ihe omOmuwa. Pamukalo nguka oshongeyi oshikethatumo shongerki sha mono ekwatho enene omolu omahanganotumo ngoka. Kalunga na yambeke iilyo ayihe yi li momahanganotumo ngoka gomeni lyongerki yetu, naambyoka tayi ka taambelwa mo.

M. Nghipandulua,

Omudhiginintonateliiniwe.

OSHITUTHI OSHIWA- NAWA

Mesiku 11.6.1967 otwa li noshituthi muGrootfontein. Eshasho moka mwa shashelwa aantu 9. Aantu 13 oya kolekwa, aantu 2 ya kuthilwa nomusitagongalo a langekwa megongalo.

Elangeko lya ningilwa Stefanus Mvula komusitagongalo omukulupe

gwaAanama Fridrich Awaseb pamwe nomuhongi G.Sondermann. Mvula ta longo muSwanla, ongula omombelewa, ongulohi ta ningi owandaha nosondaha ta ningi omambo.

Omusamane Sondermann a uvi- tha mokulesha Luk.15:1-10. Okwa popitha, aashashwa, aakolekwa nego- ngalo. A popitha wo omusita omupe sho a ti:

“Omukwetu Stefanus, nena wa langekwa mpaka nowa ningi omusita gwaamwameme mboka taa zi notaa yi mOwambo, u ya yakule waa noma- ngungutulo.” Omuwa ote ku yambe- ke. Aakuluntugongalo ya pandula noku- kumagidhatsamukumo egongalo. Opwa imbwa oondjimbo oombwanawa noshi- tuthi osha hulu.

Sakaria A.Nashongo.

OUNYUNI OTAU TONGO SHIKE

VAVALI VE LIMA-NGELEKA

MuGobabis mwa kundanwa kutya: Ovalumenhu vavali ovalaule ove lidi-

EDU LIWALA MONIKA MOWAMBO

Ehangano W.N.N.R. ola udifa kutya, ola mona paife mOwambo edu liwa londilo lokufoloma eedopi noitungifa ikwao. Pa diladilwa edu lonhata olo nge tali longwa, otali eta ekwafelo moilonga yokutunga Owambo ngashi ya diladililwa.

ONYAKANYAKA MU-AMERIKA

Pokati kovAmerika novalaule vamo, hava ifanwa Ovanegers, opwa holoka onyakanyaka. Ovalaule va hovele tava xwike, tava denge nomamanya nosho oikilikiti ikwao. Ovapolifi va kala nokukondjifa oupyakadi ounde ovanhu vahapu va fya navamwe va ehamekwa. Omaudafano a tumhakanana oo a eta oupyakadi nepangelo lAmerika otali kondjo pa holoke vali ombili mokukalafana.

IITA

Iita pokati kAayisrael nAayegipiti oya hala okuhwama. Iilando nomahala ngoka Aayisrael ye ga yugu kaatondi yawo noye ga lala, otaku tiwa naaze mo. Aayisrael otaa ti itaa zimo nosho shoka she eta ishewe uupyakadhi. Rusland okwa ti ota kwatha Aayegipiti mokutidhamo Aayisrael nokwa tumu kuEgipiti ooskepa dhiita niikondjitho. Shoka tashi landula walyewo.

MuNigeria ishewe otamu kondjwa nombinzi otayi tika pokati kaakwiita yepangelo naamboka taa kondjitha epangelo.

MuKongo mwa kala wo iita pokati kepangelo lyaMobutu naakwiita yalwe mboka ya penduka okukondjitha epangelo. Aakwiita yaMobutu kwa popiwa otaa kondjo okuhalakanithapo aakondjithi mboka nomapangelo galwe otaga kwatha wo.

Iita yaVietnam onkene otayi kondjo. Oomwenyo dhaantu otadhi kana miita mbika ya kala ngashingeyi ethimbo ele.

paa ve li mangeleka omafiku avali a shikulafana.

Omunama Frans Skryer, okwa hangika a endjelela komuti. Mukwo ombaatili Karel Jankowski (21) a hangika natango a endjelela momuti.

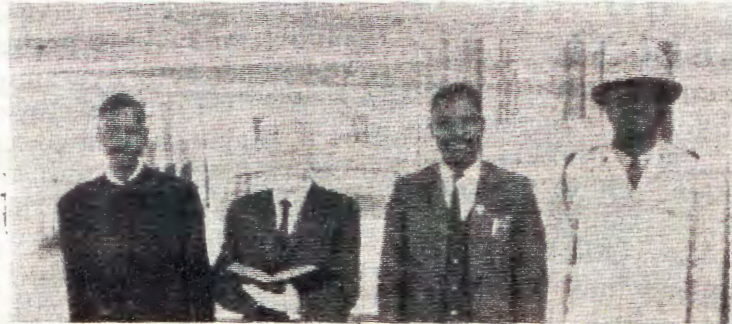
OMUPANGULI A SI

Omupanguli gwaakondjelimanguluko 37 mboka ya li ye nokupangulwa eti-7 lyAguste, J. de Vos okwa si ombaadhilila muPretoria sho esiku lyompangu lya adhika lya thika. Epangulo nolya undulilwa kesiku lilwe. Aapangulwa oyendji oyo mboka ya kwatwa mOwambo.

EIMBILO LYEHANGANO

Eimbilo lyEhangano, ndyoka lya tegelelwa ngashingeyi kaantu oyendjiyendji li holoke, sho lya longekidhwa ku kuku Maija Kantele, oli li pokuholoka ngashingeyi. Mbalambala to ka tseyithilwa shaa tali landithwa mostora yomambo.

OMUHONA WOKOMBONI YOTAVI



Omuhona wokomboni mOtavi okwa yandja kovamati vomokomboni Ombibeli. Okwa ti i tulwe moshililo opo ovamati nge tava li oikulya yolutu, va lye yo oikulya yokomwenyo.

Mefano to mono okudja kolumosho omwevangeliste F. Nghihalua womOtavi, kwa landula omuhona nOmbibeli meke, vavali kolulyo omutoloki nomupolifi.

I LENI MU LANDE IHAUTO

KOnandjokwe oku niihauto itatu tayi landithwa ngaashi tayi landula mpa:

Landrover shi noshikoto, model 1964 noshe enda oomaila 35,000 otashi pula **R800.00**.

Datsun shi noshikoto, shotona 1, model 1964. Osha enda oomaila 21,000 notashi pula **R300.00**.

Bedford, Diesel, shootona 5, model 1964, osha enda oomaila 47,000 notashi pula **R1400.00**.

Ngoka wa hala po shimwe, holoka komusamane Henrik von Schantz kOnandjokwe.

EEMBELEWA PAMWE TADI LUNDULUKA

Eembelewa doilongo yahangana (Unated States head-quarters), odo di li muNew York, otadi fanekwa di tembukemo ndele di tembukile muParis. Oshinima otashi kundafanwa, shi talike ngenge otashi piti.



Dr. Martin Luther okwa simanekwa mostamba yOvafransa.



Mefano kolumosho taku monika omushamane Paulus Shaamena. Shaamena okwa longwa moseminari mOniipa. Okwa kala moutaleli mOndonga eedula 18 nde a kala yo elenga lakula lohamba Martin Kadhikwa. Ova kala nomuhongi Nārhi nde ovo va twala evangeli kOukwangali mOukwanyama. Oku li mOngwediva paife. Kolulyo taku monika omushamane Johannes Shihepo. Oku li pamwe novatekulu. Shihepo ota shiivika nawa kukeshe omunhu ta piti pOndangwa nokaholo mokuya kOushimba. Aveshe tava shiiva omapukululo aye nghe ha lungameke ovanhu mokuya nokudja kOushimba. Okwa longela ongeshefa yaSWANLA efimbo lile.

OSHIPONGA SHOMULILO TU SHI KOTOKELANI

Onzapo ya tala nomeho otayi hokolola kutya: Pethimbo lyongula omulilo gwa fike ondjugo yokulala thilu nomwa pile uunona utatu, uumati uyali nokakadhona kamwe, owa lungunapo. Yina okwa adhika a kateka omeya komuthima. Omusamane Josef Alweendo okwa adhika kUushimba nomegumbo kamwa li aakuluntu yalwe. Yokomagumbo oyo ya mono omulilo noya matukileko. Osho oosa dha holokapo ngaaka momwedhi tuu ngwi-yaka Juli.

Egumbo lyomusamane Alweendo oli li mIikango megongalo Okaku. Osho tatu dhiladhila omwenyo gwa yina yuunona nogwahe, nkene gwa gumwa noshikaha oshidhigu shaKalunga.

Itashi londodha aanona naavali yaanona mboka ya pi, ihe tashi londodha kehe ngoka ta uvu onkunda na ndjika kutya, Jesus ote tu adha twa tya ngiini siku te tu ile? Eholokololo lyoshiponga shika oli li ngaashi li li, ihe ekululaka, oyo aluhe epe otali ti: "Longekidha egumbo lyoye, oshoka oto si."

OTWA PANDULA

Fye ovayelege vokuKongo, otwa pandula omayakulo aeshe tae tu dile mookaume ketu nye amushe. Unene twa kwafwa kunye eteyo loilya mEkoka. Eteyo paife la pwa. Nye voshitaingerki shOuninginino, otwe mu pandula, Kalunga ne mu yambeke. Paife otu na ashike exwo. Natango otwa pumbwa ekwafo leni. Vamwe omu li komiti yomifyaati. Tu hongela oshixwifo nande shimwe. Ohatu longo meenghono domaindilo eni. Kundweni.

Ponhele yovayelege,
Lot Kaishungu.

ONDA KANITHA

Ombaikitha onduudhe, yondilo, otelelina, muyo mwa fa mu na uumpungu, ya shanwa, yoombandi ndatu komeho, yonomola 5. Oya kana eti-3 Juli 1967 (Omaandaha) komatango okuza pOniipa okweenda kongalama(ondjila yUushimba) sigo opositola yaNependa ontega nOnayena.

Ebandulo komumwameme we yi toola e to yi kwatha ndje.

Hosea Nampala, Oseminali, Ongwediva, Pk. Oshakati.

ALESHI YA NYOLA

F. Kokule Shilumba, Okalongo, ota ti: Omugundjuka ngele a hala a mone eyambeko lyaKalunga, na kale aluhe koshipala shaKalunga. Oondjo oonkulu ngele inadhi dhimwa po, otadhi tidhile kokule eyambeko.

Ngele dha dhimwa po, omuntu ti ishonopeke. Itii tangele we eopalo lye. Ota vulika kaakuluntu. Ota halele ayehe uuwanawa. Oye omugalikani nomugalikaneni gwaayehe.

Lot Kornelius, Bethania, okwa nyola ngaha: Hano kaleni oupafi osheshi kamu shii onaini Omwene te uya. Tu lidudeni moisho younyuni nde tu lidilulule. Meulu tamu kala ehafo molwomulunde e lidilulula. Onghenda yOmwene nai kale nanye.

Kristof Shikongo, ota ti: Ope na aakriste yamwe taa puka sho haa ti: Omuntu muukriste kalamo ondumentu, ino pwilamo. Ihe itedhulula, u ethe iinima yuuyuni, oshoka otayi hulupo noto ka shuna mevi u li ngaashi wa valwa. Konga tango oshilongo shaKalunga.

ETALELEPO LYETU

Eti-25 lyaJuni 1967 ovanyasha mOkalongo twa talelapo Onheleiwa. Ovanheleiwa ve tu tambula nehafo. Twa kala navo melongelokalunga.

Konima yomambo ovanyasha atushe twa ya ponhele oyo ya longekidwa nawa. Omaimbilo mawa nomakumaidafano eendjovo dOmwene a kala exuku letalelepo letu. Pa li yo omahokololo oo taa shilile ovakriste puJesus. Pexulilo ovanyasha aveshe neongalo twa umba ongalo. Oya tulwa moshikefa shovanyasha vomeongalo. Oya li R5. 29.

Omufitaongalo M. Nengola a xulifa oshiongalele shetu nehambelolopandulo. Twa shuna nehafo eshi ve tu dika eenghaku keemhadi,

A. Haileka.

IIGONGI

a) Okwa thanekwa, oshigongi shaakulukadhi yaasita shi ka kale muTsandi eti-25-29/9/1967. Ayehe otaa tegelelwa,

b) Oshigongi shaakriste ayehe shi ka kale megongalo lyOshitayi mOndonga eti-8-10 lyaDesemba nuumvo.

"OMUKWETU" oha zi mOniipa.- Omukuluntu gwoshifo/ Hoofredakteur: Omumbisofi Leonard Auala, amushanga gwoshifo/ Redakteur: Leonard M. Shemuvalula, Oniipa, Pk. Ondangwa.- Ondando komumvo mOwambo 60c, mUushimba nOkavango 80c. Oofuto nomambestelo naga tumwe kOmukwetu, Oniipa, Pk. Ondangwa.- Moka hashi nyanyangidhwa: FINSE SENDINGDRUKERY, OVAMBOLAND, S.W.A.