

OMUKWETU



Oshifo shOngerki onkwaevangeli paLuther yomOwambokavango / Die Tydskrif van die Evangeliese Lutherse Ovambokavango Kerk

No. 11

JUNI

1967

KALANI MU NA EITAVELO LAPAMA

Luk.15:11-32.

Omunhu ta pumbwa eitavelo, o-po a xupifwe. Olo oshapi yokufiki-fa momaupuna oshilongo sheulu. Eitavelo ohali longo oinenenima.

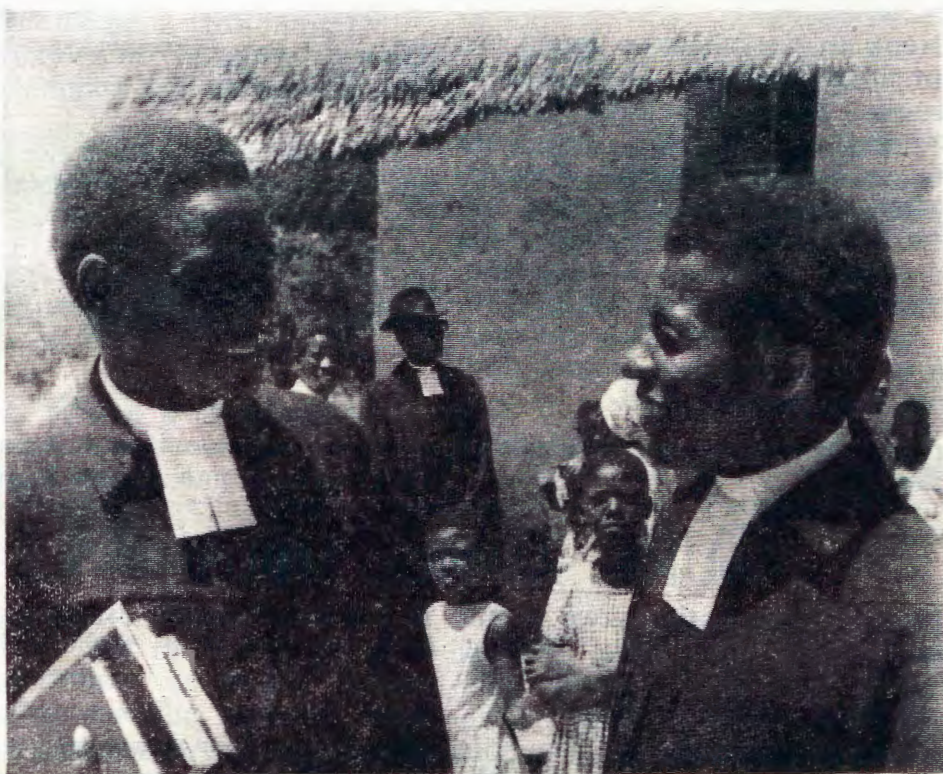
Abraham a valulwa omuyuki molwalo. Omolwalo Petrus a velula oshingudu. Bartimeus a twikululwa molweitavelo. Olo Jesus ta pula movahongwa moshikungulu mefuta ta ti: Nani kamu neitavelo? Onye mu na mboli eitavelo linini? Nonale okwe va longa: "Ngeno mu neitavelo, ngeno otamu lombwele ondudu ei -Litumbapo- nde otai shi ningi. Ha moinama oyo aike, ndelene:

Eitavelo otali xupififa omulunde. Nande oku noulunde u fike peni, pamwe wa tilyana nokuli ngohonde, shimha ta itavele kutya, Jesus e neenghono okudimapo omatimba ange, nde te liyandje, oshili ote adiminwa po aeshe.

Ohatu pumwa, hatu teelwa tu kale neitavelo lafa lomumati ou a kanene. Konima eshi a dedauka moubwada waye woipala, woukolwe, woufukulume nowoushondolo, woumbudi nowoulai, oyo okwa pashuka komwenyo waye kwi. Te lipula moule meni laye mwi. Oulunde we mu lulila nde a lyamo ewe. Okwe limcna oulai nde te livele eembedi.

Okwa dimbulukwa nawa osho shi li keumbo laXe, kutya, elooloo laHamutwe waKafidi. Okwa itavela shili kutya: Shamha handi i kutate, tate ota ka tambula nge. Vali, shimha a tambula nge, ohandi hepuluka. - Eitavelo laye linene lifike apa, naanaa la fa laBartimeus. Ta ti:

Oshili ohandi fiipo oingulu ei nokutya oulunde, itai kala vali moubwada ou: Ohandi i kutate nde itandi fi nande ohoni. Ohandi mu lombwele: Tate, onda nyona meulu nokoshipala



Ovafitaongalo Josia Mufeti naAbisai Sheyavali aveshe hava popi Oshisoomi, ova shakena mEngela, Sheyavali oyo a di kuSoomi. Paife otave shi kokota.

shoye. Inandi wana vali nokuli ndi ifanwe omumwoye. File nge onghenda. Ninge nge ngaashi umwe wovapiya vowe. - Tala eitavelo taa. Oshike sha landulako mbela?

Xe okwe mu monena nale kokule. Te mu shakeneke. Te mu dingatele kofingo. Te mu fipi komilungu. Omumati ta djalekwa omudjalo mupe. Oikutu yoinyanyu oyo e uya nayo, ya ekelwashi. A dikwa ipe, okalinga neenghaku. Ehambelelo la kala mooxe. Paife okwa hepuluka. Oikulu ya fya, tala, oipe ya holoka. Ngeno a kwatwa kohoni, ngeno a kanenena filu.

Eitavelo laye le mu xupifa shili.

Ovawambokavango ovaholike, ngeno tu kaleni neitavelo li li ngaha. Na ove yo Nima, ngeno u itavele nde u aluluke u ye kuJesus. Ngeno oiwana younyuni tai mono yo oushima nomapuko ayo, ngeno tai li dilulula nde tai xupifwa.

Tate Kalunga te tu teelele nonena. Ote tu tambula pehe na nande onhondo, shimha fye twe mu itavela nde hatu liyandje kuye tuhe nohoni. Ove owa mwena?

L. M. Shemuvalula.

OONTOKOLWA DHEPANGELONGERKI

1

Ngipandulua ngoka a yile koshigongi shaakwaLuther muuyuni auhe kuAustria peha lyongerki yetu, a etele Epangelongerki ehokololo lyoshigongi. Epangelongerki olya taamba ehokololo ndika nepandulo.

2

Epangelongerki olya faneke ombelewa yaagundjuka yi ka kale mOnguediva omolu oupokati wOwambo, nombelewa yi ka tungwe ngaashi ya fanekwa kokangundu hoka ka pewa oshimpuyu shoka.

3

Epangelongerki otali hiya aahiki yomankuma yomongerki omwameme yomUushimba, ye ye ya talele po ongerki yetu, mokuhikila omagongalo gamwe gongerki yetu omankuma moshituthi shEtumo, okutameka 7-9. 7. 1967. Epangelongerki olya faneke ngeyi: Esiku eti-7/7/1967, ya hikile Onandjokue nesiku eti-8/7/1967 ya hikile omagongalo ge li medhingoloko lyOnguediva. Tashi ti, omagongalo ngoka taga vulu okwaadha pOnguediva, opo ga dhane oshituthi shEtumo mpeyaka molyomakaya eti-8/5/1967. Esiku eti-9/7/1967, omagongalo gomOndonga ngoka taga vulu okwaadha pOniipa, ga gongale mpoka, opo ga dhane oshituthi shEtumo pamwe osondaha eti-9/7/1967.

4

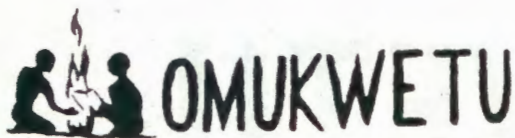
Omumbisofi a eta ekundo lya zi moshigongi shaasita yongerki yaELK, pamwe noshituthi shOmbimbeli ompe ndjoka opo ya holoka mOshinama. Epangelongerki lya taamba ekundo ndika nepandulo.

5

Meme Sylvi ngoka twe mu pelwe kEhanganotumo lyaSoomi nokOngongahangano yaakwaLuther, e tu kwathe mokunongela, nkene omapiya getweni taga humithwa komeho mokulongwa, sho ta ka fudhapo oomwedhi dhimwe kuSoomi, omupehamuwiliki gwEpangelongerki J. Amakutuwa e mu tumbulile etumbulo ndika: "Kalunga keshi omugoyokithi, a dhimbwe ando ashihe shika we shi longo mpaka, oshilonga shika kashishi shi osima."

6

Omumbisofi a gandja ewiliko lyigongi yEpangelongerki nolyongerki ayihe komupehawiliki J. Amakutuwa, oye mwene sho ta yi koshigongi shaawiliki yOngongahangano yaakwaLuther kuAmerika.



OMUKWETU

JUNI 1967

ISRAEL OSHI NOO-MBUDHI

Omimvo dha piti aalsrael sho ya li ya halakana nuuyuni, oya tamekele ishewe okushuna mevi lyawo. Ya kala yi ipyakidhila okwopaleka ishewe oshilongo shawo, shoka sha li sha vundakanithwa kaatondi. Oya tameke okukala nombili. Ya tungu iilando, ya tsike omiti, yo opaleke oondjila noya koleke omatanga gaa-kwiita yawo.

Nena tu uvite ishewe Israel sha thikamenwa kaaniita. Oshilando oshiyapuki Jerusalem tashi popiwa ngashingeyi olwindji omolwiita mbika ya hala okuhwama. Aanenentu yomapangelo guuyuni otaa kulukuta ngashingeyi nelalakano iita yilwe nenge mbika yi kandulwepo, opo yaa etithe oshiponga shiita yuuyuni auhe. Ngele to fulu mOmbimbeli to mono nkene iinima mbika oya hunganekwa nale.

Kongeni Omuwa manga ta monika.
Jer. 55:6.

AUNE AUTIO, MBUSHE YA AUNE SHILONGO

Meme Aune Autio, okwa zi muHelsinki nokwa thiki nawa pOniipa mOwambo. Oya kala naAune Shilongo muSoomi noshio a thiki mOwambo, okwa nyanyukilwa okumona evi nAawambokavango. Okwa ti: "Na-

le twa uvu Owambo ashike pamahokololo, ihe nena tandi tala oshipala noshipala." Okwe ya okukwatha meme Aune Shilongo miilonga yokuhumitha aagundjuka yongerki yetu nokonima yethimbo ta ka shuna.

Autio okwa talelepo oshinyanyangidho nokutala shoka aamwayina taa kondjo. A kundathana wo na amushanga gwOmukwetu nokwa gandja omakundo ge kAawambokavango, ngaashi taga landula mpaka:

"Sho nda thiki mOwambo, osho enyanyu lyandje. Omimvo odhindji twa kundana kOwambo, twa talithwa omafano notwa hokololelwa uukwatyaa waahuka kaatumwa mboka ya kala mpaka nale. Ihe nda fa inaandi fatukilwa naanaa. Aune Shilongo nAawambo mboka ya li noya kala muSoomi, oye tu tseyitha nawa Owambo shi vule omahokololo gowala. Twi ilongo oshindji kuyo notwa pewa nuupe eyithano lyoshilongatumo mpaka.

Nge taku ningwa iigongi muSoomi, unene aantu ya hokwa okugongala pamwe nAawambo mbeyaka. OohAune ye tu hokololele nawanawa Owambo-kavango nehuku lyetumo mpaka twe li tseye. Unene miinima yaagundjuka nonkene ye nokuhumithwa komeho, otwe yi kundathana. Ngashingeyi sho nda thiki mpaka nondi nompito okuyakula kashona, oyo enyanyu lyandje. Onde ya okukwatha Aune, ihe ngame wo ndi ndungikwe mpaka."



Oombushe Aune Autio na Aune Shilongo.

OMUPAPA E UVITE UUDHIGU MOLWIITA

Omupapa Paul muRoma, okwa popi mevithopopitho lye mosondaha yesiku eti-21/5/67 kutya, oku uvite oluhodhi omolwiita mbyoka ya hala okuhwama miilongo yomokati kuyuni naamyoka yi li koombinga noombinga dhuuyuni.

ONGERKI ONKWAEVANGELI PALUTHER YOWAMBOKAVANGO YA TSAKANITHA OMIMVO OMULONGO SHO YA PEWA EIPANGELO LYAYOYENE

MuMai nuumvo opwa piti omimvo 10, Epangelo lyaSWA sho lya gandja kongerki Onkwaev. paLuther yomOwambokavango eipangelo lya-yo muSWA alihe.

Ihe opwa li pwa pumbiwa omalongekidho omanene nogendji, ongerki ndjika yomOwambokavango yi pewe eipangelo ndyoka. Shoka tashi monika mpoka, ngashingeyi ope na omalongekidho okulongekidha Ehistori lyOngerki ndjika tayi gwanitha omimvo 100. Omumvo 1970 otamu ningwa oshithuthi oshinene mOwambo, oshoka aatumwa aaSoomi yotango oya thika kOwambo 1870.

Aatumwa mbeyaka yotango ya kondjo omimvo 12, Aawambo yotango manga inaaya shashwa. Eshasho lyotango lya ningwa 1883. Onkee ano omumvo ngoka tagu talwa ogwo omumvo uuna ongerki yomOwambokavango ya valwa.

Oshigongingerki shotango shongerki ndjika sha li muSeptemba 1925. Nena ompangongerki yotango ya kolekwa. Mbala konima yekoleko lyompangongerki aasitagongalo yotango Aawambo, mboka yaheyali, ya yapulilwa oshilonga shawo. Ethimbo ndyoka tali vulu okutalwa etameko lyeipangelo lyongerki yomOwambokavango.

Omumvo gwa landula, 1926, konima yetalelopo ndyoka lya ningwa kOkavango kaataleli Aawambo, oshilonga shokOkavango sha tamekwa. Noshwo wo edhina lyongerki ndjika, Ongerki Onkwaevangeli paLuther yomOwambokavango, lya dhiladhilwa.

Uukriste opo u tameke okutsama moshigwana shika, okwa dhikwa Oshinyanyangidho shokOniipa omumvo 1901, Etetamendi Epe lya holoka mOshindonga 1903, oshipangelo shokOnandjokwe sha dhikwa 1911 nOsemi-nari yokOniipa ya dhikwa 1913.

Ongerki nkene ya koko, tatu shi mono melandulathano ndika:

1890	Aakwanegongalo	489
1910	"	2018
1920	"	7995
1930	"	23126
1940	"	35732
1950	"	65451
1960	"	118313
1965	"	156204
1966	"	165431

Moshigongingerki omumvo 1954, uuna Ombimbeli ayihe ya holoka mOshindonga, ongerki ndjika ya tokola, yi ninge ongerki yi neipangelo. Ompango yayo nomauthompango ga kolekwa omumvo 1956. Momu: vo gwa landula, 1957, Ongerki Onkwaev. paLuther yomOwambokavango ya ziminwa, yi kale yi neipangelo kEpangelo lyaS W A. Oshinima shoka sha gandja kOngerki Onkwaevangeli paLuther yomOwambokavango eipangelo nemanguluko lyokulonga nolyokwiihumitha komeho muSWA.

Onkatu onene mehistori lyOngerki yomOwambo ya ningwa, sho omu-valelwamo gwotango a hogololwa a ninge omuwiliki gwongerki (moderator). Oshigongingerki 1960 sha hogolola omusitag. Leonard Auala a ninge omuwiliki. Koonkondo ndhoka, oshigongingerki shi na ompango yongerki, sha hogolola 1963 a kale omumbisofi gotango gwongerki ndjika.

Ongerki yomOwambokavango oya kala oshilyo shOngongahangano yongerki onkwaevangeli paLuther muSA (C C L F) okuza ketameko uuna Ongongahangano ndjoka ya dhikwa omumvo 1953.

Noshwo wo oshilyo shOngongahangano ... (F E L C S A), ongerki ndjika yOwambo onene yi vule ongerki adhihe mOngongahangano ndjoka.

Tala etsikilo ke pandja etihamano.

OMBILI NAYI KALE NANE!

Tu dhiladhileni Jesus sho kwa yumuka ina ya megulu esiku ndyoka a yumuka. Omolwashike ando a kala kombanda yevi omasiku omilongo ne? Okwa li e nokulonga shoka e shi u-vaneke muJoh.14:17. Shoka kwa li ine shi longa manga inaa sa.

Jesus okwa yono shike kaalongwa ye? Tu tale oshike sha li maalongwa esiku aalelwa esiku a kwatwa sigo esiku ndyoka a yumuka? Ndishi oya li noluhodhi olunene nolwe ya kutha ombili. Ombili yawo oyi noku za peni ano? Luk.24:39,40. Jesus te ya ulukile iikaha ye noompadhi dhe moka mu nombili yooitaali ayehe. Ina popya owala mokana, aawe, okwe yi yelutha pombanda e tayi kala pokati kaTate Kalunga naalongwa. Tate Kalunga okwa taalele aalongwa miyadhi yiikaha yOmukulili, nena ombili onkwagulu ya tondokele moomwenyo dhaalongwa.

Kondje yongulu yaalongwa opwa li magumbo omikunda niilongo yuudhilila aantu oyendji, ihe Jesus okwe ya pitilile ayehe a yi mongulu yaalongwa, ina yelutha iikaha kuyo, oshoka ya li ye nombili yawo yopayuni, kaye na wo eitaalo okwiitaala Jesus Omuhupithi gwawo.

Jesus okwa yi megulu niikaha ya yeluthwa Luk. 24:50,51 natango kaalongwa ye. Osho nonena ndjika Jesus oku li mokati kooitaali ye e niikaha ya yeluthwa. Ope na oyendji nope-thimbo ndika Jesus te ya pitilile. Oyendji Tate Kalunga ite ya monene miikaha yOmukulili. Oyendji iikaha nombili yaJesus kaye yi shi, kaye li koho yayo.

Yayee omukeeneitaalo nomulunde! Jesus nguka a yi niikaha ya yeluthwa, osho ta galuka nayo ya yeluthwa li. 1:11 okutaamba aalongwa e ya fale megulu. Omwiitaali u nuumbanda Jesus ota ti: "Inamu tila ongame ngu. Taleni iikaha yandje noompadhi ne mu dhimbulule ongame ndi li po."

T. Kuume.

EPANDULO

Omukulu gwonale okwa tile: "Waa pandula noyaka." Otse aagundjuka aaTilyasa otatu mu pandula unenene, one ookuume aaC.D.M. sho mwe tu kwatha eliko koshiketha shetu.

Ano R7.00 dhetu odha thika. Iyaloo, Kalunga ne mu tanithile oshindji shivule pushika. "Kaleni mu shi shi oshilonga sheni kashi shi osima omOmuwa." Kor.15:58.

Taimi Kuume.

ONTANDA YAAKONGINDJILA AAKADHONA MONIIPA

Mesiku 22 Apilili metihamano aakongindjila otwi imonene ehala ewanawa lyontanda yetu kuuzilo wOnandjokwe kombanda yEpale. Osha uvane-kwa nale komuwiliki Raija Salmi nomupehawiliki Laina Kivelä pamwe naakongindjila kutya, otatu ka kala mokuti uule woshiwike shimwe, opo tu ilongel iinima yimwe yuukongindjila tayi monika mokuti. Kalunga okwa wilike omadhiladhilo ngaka. Mesiku eti-2.5.67 otse aakongindjila aakadhona omugoyi pamwe nomuwiliki Raija nomupehawiliki Laina, otwa thikama tu ye kontanda. Twa kwathwa oshihauto oshinene mOnandjoke, she tu

fala pamwe niinima yetu. Omuhingi okwa li tate Toivo Ambambi.

Omuwiliki a tseyithile shoka shi nokuningwa tango. Nani montanda ongaashi ngaa megumbo. Oshiiyogelo otwa dhika, nokaholameno otwa fula e tatu katungu. Oshitaafula shokulila ku shi pe mukweni. Ehala lyokudhanena etanga nolyokuhungila pomulilo ongo lya kala po nale. Ongerki yetu yomokuti nomushigakanogwayo nokataafula, aakongindjila ya nongele nale nke tayi tungwa. Ootenda dhokulala opo dha li. Shaangoka a tokolele mokuti pethimbondiya, ependela lyetu lya tsilikwa a-

luhe koshitenda oshile, olye mu tseyithile kutya, aakongindjila ya tula mpa. Aluhe opwa tonatelwa pu kale pwa yela. Omuwiliki gwetu a tungu elandulathano lyesiku kehe nawa! Otwa li uutanga, tu li Kayimbi naKaandje. Ongula kehe okangundu Kayimbi naKaandje ka pendula yakwawo neyimbilo lyongula. Esiku kehe ongula manga inaatu tameka sha, twa dheula omalutu na konima etsiliko lyepandela nowandaha.

Omasiku twa kala montanda, otwi ilongo iinima mbi: Okutsilika nokukutha ko ependela noku li gonya pamukalo guuka. Okulongitha ethimbo nokuvulika kohiya. Okulandula oshinamwenyo shaashoka oomminute nokundhindhilika shoka tashi ningi. Okugamena uuntsitwe ngaa-shi iinamwenyo niimeno. Okweenda uule womukongindjila, omayila. Twi ilongo nkene tatu vulu okuwilikwa komandhindhiliko goomore nenge okulongitha okapandela mushoka twa hala okuninga. Okulongitha okompasi uuna tatu ende mondjila onde nokuhupitha omukwetu a gwila moshilambo nenge momeya. Omayimbilo gokuhungila pomulilo, nokuteleka nokukanga iikulya yi ili noyi ili niipana. Uudhano wi ili nowi ili tau ndjangeke olutu, ku pula.



Aakongindjila mondjila okuya kongerki kOniipa esiku lyaGEORGE omuyapuki. Esiku 23 Apilili omumvo kehe, aakongindjila yonuu-yuni auhe ohaa dhana oshituthi shawo moongerki, moontanda nenge momatsali.



Omumbisofi ta ningi elongelokalunga montanda yaakongindjila.

Komalutu otwa paluthwa nawa metonatelo lyameme L.Kivelä, ngoka a tameke esiku lyotango, sigo olya hugunina montanda okuteleka. Twa pandula!! Ontanda ya tonatelwa uusiku kutate Petrus Nashikaku.

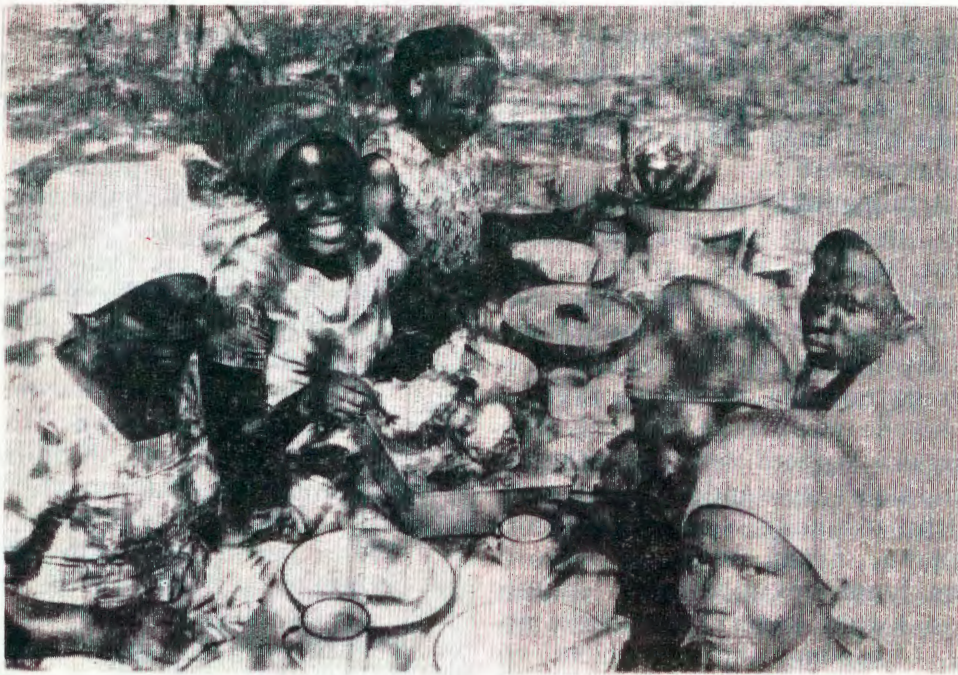
Otwa paluthwa noohapu dhaKalunga motundimbimbeli. Elongelokalunga montanda, lya ningwa komumbisofi L.Auala, itatu li dhimbwa. Twa talelwapo koomeme Aune Shilongo naAune Autio noye tu longo noku tu kumika. Aanandjokwe naashiinda yontanda oye tu talelepo wo.

Peha lyaakongindjila otandi indile aaleshi yOmukwetu mu galikanene oshilonga shuukongindjila shi taandelè mOwambo wo ongaashi mii-gwana iikwawo.

Peha lyaakongindjila,
Katrina Auala.



Ongula kehe aakongindjila ya thikama mpaka okuyelutha ependela lya-wo nomowandaha.



Aakongindjila koshililo shawo montanda.

OSHOONGALELE SHO VANYASHA MOUKWANYAMA

Ovanyasha voshitaingerki shOukwanyama, ova ongalele mEenhana eti-5-7 laMai 67. Aveshe ovo va fikako va ongala onguloshi yeti-5/5/67. Efiku eti-6/5/67, omulongi D. Shikongo a ninga oandaha yongula.

Konima yoandaha ovanyasha avashe va longekida omapandela avo, ndele tava i momikweyo nokuya mongerki tava ende moluvanda olo



Ovawambo otava ka huwa eeshi. Osho ve kwete osho oyongo.

ONDA KANITHA

Ongame Michael Shangula, Olukonda, onda kanitha uusino uukiintu utatu. Ngele ku na ngoka we u mono tuma elaka kuJohannes Gweendama, Olukonda. Tangi kekwa tho lyeni.

lawapalekwa nawa. Mongerki omapandela a kala ngaashi eenyofi koshiikaneno.

Otwa ningilwa otundimbibeli kOmupashukilishitaingerki shOukwanyama.

Edina loshoongalele ola li eli. "Oshisho sheni shi mu twikeni." I Pet. 5: 7. Moshooongalele eshi otwa pewamo ovaenda va fimana. Meme Aune Autio ou a findikila omulongi Aune Shilongo, ou a kala eedula nhatu muSoomi. Nosho yo omulongi Aune Shilongo. Aveshe vavali vetu pa omakundilo adja kuSoomi. Oipopiwa aishe oya li ina elalakano eli. Ovanyasha va ninge ovayakuli vaKristus. Momaumbo, momikunda, mOngerki, meeskola dosondaha, mongudu va hamunona hamukulunhu nosho moshwana ashishe.

Ovanyasha va shile ovanyasha ovaliteeki novashunimonima ve va shilile kuKristus.

Otwa mona yo omuhona wokoshikango Kabatutu. Ou a tumbula ngaha. "Onda hafela eifano leni. Ndele ame onda hala okupandula Etumo laSoomi eli la manga oiwana yoOwambo kumwe nevangeli. Ndele ondi udite oluhodi pamwe novafita vomaongalo eni, ("ame nghifi omufita") oku na ovanyasha vakanifa omaumbo avo molwoikolwifa. Nye hasho mu kale. Kaleni mwa pama mounyasha weni." Osho omuhona a tumbula.

Omweenda u mwe twa mona no-twe mu hafela yo oye omushamane

LIHONGO MWENGELANDA

Omusitagongalo Asser Lihongo, Mupini, ngoka a tumwa kOngerki yetu ketsikilosikola kuEngelanda e ki ilonge oowino tadhi pumbiwa moshilonga shokulundulula Ombimbeli, opo a kwathe moshilonga shokulundulula Ombimbeli mOshikavango (Rukwangali), okwa thiki ko nawa.

Ota kundile po aakriste ayehe naanashilonga ayehe mOngerki yetu noohapu dhaKalunga dhi li muTitus2: 11-14.

EPANDULO

Aagundjuka yegongalo lyetu ya taamba nepandulo ehangalyapya lya zi kaagundjuka yokOmbaye, lya gongelwa kuLeonard Kamenye R2.31.

Otatu mu pandula one amuhe mboka mwa gandja ekwatho mongalo yaagundjuka yetu notatu mu halele eyambeko lyaKalunga. Peha lyaagundjuka aaHeke. J.K. Ekandjo.

T. Pentikainen. Na ye etu pa mo yo momakundokumaido.

Opa li omalandifo nomafiyafano moiniwe. Osho yo omahokololo nomaimbulo kupula. Omafiyafano oiniwe oshikefa shovanyasha okwa li ngaashi taa landula:

Eenhana	R89. 89
Engela	R74. 60
Chalushu	R70. 50
Olupandu	R65. 80
Onguediva	R24. 05
Endola	R22. 00
Okatope	R14. 00
Omundaungilo	R13. 25
Ongenga	R12. 00
Okalongo	R10. 97
Edundja	R 6. 70
Ondobe	R 6. 75
Onheleiu	R 2. 50

Kumwe..... R411. 03

Oku na yo oinima ikwao ilili noilili. Ohatu pandula eongalo lomEenhana eshi la li lelilongekidila ovaenda. O, opa li pafewa tuu shili. Omwene nemu pe eenghono momayakulo r a kwao.

Mokuninga omafiyafano omufita weongalo mEenhana kwa ti: Ovaenda nava lye omashini ndele eenhana ina ve di mona nande. Tashi ti: inava findwa nande. Onhgene ovo votete momafiyafano. Omwene na yambeke oshilonga shovanyasha mOngerki aisho.

H. Dengeinge.

FUDHENI PO ISHEWE!

Ehiyo ndika olya ngelengendja momakutsi gaasitagongalo yOngerki okwaELOK. Opo ihe eti-18 lyaApilili ongulohi ayehe oya gongalele mEngela. Oya kundathana pamwe, oya yolo pamwe, nomiipala yawo omwa holola naanaa oya dhimbwa manga omaudhigu niimpwiyu ye yi thigi komagongalo gawo.

Eti-19 lyaApilili oshigongi sha tamakwa nelongelokalunga ongula potundi 8.00 yongula. Euvitho lya ningwa kOmumbisofi gwOngerki yetu L. Auala paEf.5:25-27. Okwa ti:- Oohapu ndhika odho ethikilo lyegongalo lyaKristus sho lya yelithwa, lyaanoshidhe. Aauvithi taa dhimbulula nga aluhe unene iipwe, shi vulithe ethikilo. Oohapu ndhika otadhi tululukile oshili ya kola yi vule omalimbililo getu kutya, Kristus ta yapula egongalo lye, note li thikitha. Ye mwene osho a pitika ngaaka tu kale aauvithi, nando e tu shi kutya, ohatu limbililwa. Oshilonga sheuvitho osho oshilonga sheshito, Kalunga sho ta shiti noohapu dhe sho to shi popi. Eitaalo to li pulwa notandi li

pulwa olyo ndi: - Oohapu ndhika tandi dhi popi odhi noonkondo okushitulula 2Tim.3:16. Pethimbo tuu ndika tandi shi popi olyo uuna Kalunga ta longo oshilonga she mungame no maapulakeni oshita.

Tu pupyalekathaneni ashike nevangeli muuyuni mbuka wuutalala wa geya, ngaashi hashi ningwa momavi gaEuropa moka uutalala hau lyana, ihe aantu ohaa hupithathana mokwiinyengaanyengithathana, sigo omalutu ga pupyala nombinzi tayi ende naayehe yaali otaa hupu. Komukalo nguka atuheni otatu hupithathana muutalala wuulunde.

Osho oshigongi sha vululukithwa ihe ngaaka, nosha pewa efalomo ewanawa lyomoonkundathana dhiipopiwa ya kwata ongerki pambepo nopalutu. Oshigongi sha hambelele wo Kalunga omolu'omayambeko ogendjigendji ga tililwa mOngerki yetu Kalunga sho e tu galulile omuhongi T. Pentikainen a kale omugandjindunge mOngerki ayihe, pamwe naa nguka omupe eme Lea Kalehmainen a kale omuhungimwenyo mOngerki ayihe. Oshigongi shaasita sha minike olwisho ndji omutumwa gwongerki meme Aupopi. Eitaalo to li pulwa notandi li ne Shilonga, ngoka e kiilongele mu-

Soomi ota kala omuwiliki mokati kaagundjuka mOngerki ayihe.

Mpaka otatu tula pafupi iinima yimwe ya kundathanwa moshigongi:-

1. Oshilonga sheyakulathano (uudiakoni) shi simanekwe momagongalo komukriste kehe.
2. Eitaalo lyomuKristus li yoololwe momaitaalo galwe gomuu-pagani. Omapipi omape naga talithwe go ga gumithwe iinima mbyoka ya kala ya kata noya shundula oshigwana ngele oya gongelwa nawa. (Mpaka pe na oondunge dhomusium).
3. Omunashilonga nomwiitaali kehe muuyuni wiikunduki oyindji palutu nopamwenyo, na holole ye a hempulule eitaalo lye lya yela.
4. Aagundjuka aanene naashona naa silwe oshimpwiyu momagongalo unene shi vulithe shito.
5. Ongerki nayi holole oshili yomeitaalo pwaa na ekudhilo neuyagelo, unene pethimbo ndika.

Ngaka ogo ga li omasiku geवलुलुकitho netsuwo lyomukumo moshilonga shOongerki yaKristus. Oshigongi osha hulitha nelongelokalunga lyUulalelo Uuyapuki moka sha taamba oonkondo oompe. Manga inaashi halakana osha laleke meme M. Kantele ngoka a longo ethimbo ele moskola yUusita mOwambo a ka fudhe po kuSoomi. Omupehawiliki gwOngerki yetu omusamane J. Amakutuu e mu laleke peha lyoshigongi. Mpaka ope na omatumbulo gamwe:-

Otandi ku kundu kuku Kantele elenga lyokuEthiopiä. Owa longo oshilonga oshinene sho wa pewa oshihoshokuhumbata eputudho lyelongo. Onde ku iigilile nawa sho wa kwatha ndje olwindji - Kalunga kee shi omugoyokithi a dhimbwe ando sho wa yakulile nonatango to yakula, nando ito mono iiyimati yiilonga yoye: Osho Kalunga a hala yi kale inaayi holoka manga.

Oshigongi osha umbu oongalo mbali, yimwe oyometumo ya gu R21.14 nonkwawo oyokuhupulitha aasele-kadhi yaasitalongwa mboka ya kane-ne kOttjimbingwe R26.64.

Oshigongi osha li sha yambekwa ngaaka nosha halakana nomukumo ogwindji omolu omagalikaneno goye -Kristus na tunge ongerki ye.

Peha lyoshigongi
J. Ekandjo.

ONGERKI YA TSAKANITHA OMIMVO 10

(Etsikilo lyep. 3)

Ongerki yomOwambokavango oyo wo oshilyo shEhangano lyoongerki a dhihe oonkwaevangeli muSWA. (C. of. L. C in SWA). MEhangano ndyoka mu na wo Ongerki yaRynse Sending-yEtumo lyAaryn, nongerki yaAndouishi onkwaevangeli paLuther muSWA.

Ongerki yomOwambokavango ya topolwa miitayingerki ine, tayi wili-kwa kaasitagongalo aavalelwamo. Miitayingerki mbyoka omu na omagongalo 41 kumwe. Aakwanegongalo yomiitayingerki ayihe ya li pehulilo lyomumvo 1966 aakriste 165431, muyo mwa li Aawambo 158,403 nAakavango 7,028. Omagongalo agehe taga wilikwa kaasitagongalo aavalelwamo. Oyo ye li miilonga ngashingeyi 84. Oseminari tayi putudha aasitagongalo ya li mOwambo momimvo 1923-62, ihe oya tulwa kumwe noseminari yetumo lyAaryn 1963. Oskola yawo ompe noyoopala, Paulinum, yi li mOttjimbingwe, moka aatumwa yotango Aasoomi yi ilongo elaka manga inaaye ya kOwambo.

Kakele kaasitagongalo, ongerki oyi na aayakuli ye thike po 956, ngaashi aayevangeliste (156) aalongi yooskola dheshasho naadiakoni nosho tuu. Oyo ohaa longwa menongelo lyaayakuli kEngela. Ooskola dhosondaha odhi thike 546, aalongwa yadho 19951. Oongundumbimbeli tadhi longo 509 naantu 14432 taa gongala mudho. MUushimba mokati kAawambo tamu longo aasitagongalo 6 naayevangeliste 20. Enyanyu enene kwaayehe, oshoka aakwanegongalo yongerki ya hwama okulonga oshilonga shetumo. Uunene mokati kaayehele oshilonga tashi dhigininwa.

Ongerki yomOwambokavango sho ya holoka noya humu ngaaka komemo sigo keipangelo lyayo, oshi noshilonga oshinene mehistori alihe lyoshigwana nomokukala kwasho. Oyo ya dhike omukanka gwa kola gwa kankamekwa muukriste pamwe noongerki oonkwawo, momukanka ngoka tamu vulu okutungwa ngashingeyi ehukumomeho lyopambepo nolyokolutu ndyoka tali gumu oshigwana ashike (nolyopasosiale).

OUNYUNI OTAU TONGO SHIKE

OMALWEENDO GOMUMBISOFI L. AUALA



Omumbisofi nakuku Aina Auala sho taa yi mondjila yokuya kuSoomi.

ONKUNDANA KUKAPRIVI

Oradio yaSuid - Afrika omasiku ngaka oya tseyithile uuyuni kutya, aalumentu 30, aakondjelimanguluko, mboka ya putudhwa mjiilongo yopondje, oya tsakanekwa kaapolosi puKapriivi, sho ya kambadhala okuya muSuidwes.

Petsakaneno anuwa opa keleketa nomuludhe Tobias Aipale, omukuluntu gwooyakwawo, okwa dhipagwa mpoka. Anuwa aapolisi yaali oye ehamekwa wo.

ETSEYITHO

MOnandjokwe ota mu pumbiwa omuntu, omulumentu nenge omukiintu a kale amushanga nomuyamukuli gwoombilive.

Omntu a tya ngaaka na kale a pita ekonakono lyoJuniolo nenge lyOmatrika nenge omulongi.

Ngoka u nehalo okulonga iilonga mbyoka, holoka kOnandjokwe, opo mu kundathane nawa nkwiya, nomundohotola omukuluntu tatekulu H. Kyronseppä.

Omumbisofi **Leonard Auala** nakuku **Aina Auala** ya thikama esiku eti-19. 5. ya uke kuSoomi. Ondhila yawo ya zi eti-20. kOvenduka nesiku eti-21, ya thiki nokuli kuSoomi muHelsinki, mpoka ookuume yawo nookut me yetumo oyendji ye ya taamba nenyanyu.

Omumbisofi Auala e noshigongi shewilikongundu lyOngongahangano yoongeri oonkwaLuther muCanada. Ihe molweendo ndoka ota yi muAmerika wo, mpaka ta ka talela po omusitagongalo Eino Amaambo ngoka e li moskola yopombanda (muUniversteit) okwiilonga natango.

Omalandulathano gomalweendo gomumbisofi oge li po ngaka:

MuSoomi 21. 5.-8. 6.

MuCanada 8. - 16. 6.

U. S. A. - muAmerika 16 - 22.6.

MuSoomi ishewe 23. 6 - 1. 7.

MOvenduka 2. 7.

Kuku Aina ota kala ethimbo alihe muSoomi sigo taa galukile ayehe pamwe petameko lyaJuli kegumbo.

Otatu ya halelele eutho lyaTate Kalunga neyambeko lye enene momalweendo gawo agehe.

UUKAMBE NUUSINO 400 WA LANDWA

Olweendo lwaAawambo yethike pomulongo na yahamano, oya landa uukambe nuusino 400 muUushimba. Ngashingeyi oye li mondjila yuuka kevi lyooyina nuuyamba wawo. Oyi itopola moongundu ndatu oonene. Otapu inekelwa otaa ka thika konima yoomwedhi dhimwe mOwambo.

MVULA KOSHAANDA

Omusitagongalo Stefanus Mvula, ngoka a tumwa kongerki yetu a yakule aamwameme Aawambo muSWANLA mOshaanda, okwa thikiko nawa nomukulukadhi gwe naanona.

Mvula sho a kundwa koonalunanga, odhe mu lombwele kutya, nekulu itashi vulika a kale wo muUushimba oku nokushuna kOwambo. Inadhi ninga ndatu, nekulu nuunona ya londo ekambamba lyokufala mOwambo. Ngashingeyi oye li mOwambo Mvula awike a thigala kOshaanda.

EWI

LYEVANGELI

MORADIO

ometa 31

otundi 8. 30 ongulohi

16. 7. 1967. Owandaha

Omudiakonilongwa

D. Iimalwa

23.7.1967 Owandaha:

Pastor H. Nakamhela.



THANT A YA KUEGIPITI

Omolwoita pokati kaIsrael naSyria, hamushanga akula woilongo, omushamane U Thant, okwa ya kuKairo shomuEgipiti. Okwa ka kundafana nopresidente yaEgipiti, omushamane Abdul Nasser, nghene oita yaIsrael naSyria i nokumwenekwa, opo iha ete oshiponga shoita younyuni aushe.

Pa diladilwa yo kutya, nenge oita yaIsrael naSyria itai mwenekwa diva, ota ka nyonauna omalweendo eeshikepa pomwaka (deurgang) Suez, okudja kefuta lopokati nokuya lwoIndia. Omhito oyo nge ya nyonauka, eeskepa shapo otadi ka dingilila Afrika nde osho tashi eta omupyakadi mahapu. Omolwasho nomolwoinima ikwao yoikonene oyo ili koshi yomandjadja, omushamane Thant a endelega okuya koilongo oyo.

A THIKI NAWA MOWAMBO

Omusamane Erkki Hynonen, a lukwa kaakwanyama "Kapundakahedi," omuwiliki gwoshilongatumo mokati kaayeleele kuKongo muuzilo wUukwanyama, ngoka a ka fudhile po muSoomi, okwa galukile kOwambo. Okwa thiki nookuli kuKongo koyana. KuSoomi a galuka a kola nawa. Ote mu kundile po.

AAMWAMEME YA KAFUDHAPO

Omusamane **Raimo Holopainen** negumbo lye nosho omupangi **Vuoko Toivola** nosho kuku **Maija Kantele**, oya thigipo manga Owambo, ya ka fudha po mevi lyaandyawo muSoomi. Omupangi gwokuKongo, **Maija Tuisanen**, naye a ka fudha po muSoomi. Omuwa ne ya vululukithe.



Nakusa kuku Albertina Iteua, omukulukadhi gwatatekulu Sakeus Ihuhua.

OMUKULUKADHI, PULAKENA NAWA

Moshitunda shaakulukadhi kamu ende Ndjamba mutenya, moshilongo shananguwo kamu matuka omulowe etagu yi gu ka nyange.

Onda hala okupopya sha kaa-kulukadhi aakwetu yongerki yetu onkwaevangeli paLuter yomOwambokavango. Tu shi yelekele medhina lyUukwatatu tu tale, ngele tashi vulya. Ngele oshidhigu shi kale ngele oshipu shi longwe. Otandi mu hiya aakulukadhi aakwetu tu zeni momasiga tuka longeleni Kalunga ketu. Tu yeni nomukalo ngu: Tu gongeleni sha shomomaliko getu, musho Tate Kalunga hetu pe ethimbo nethimbo. Tu toteni okaketha ketu aakulukadhi, tse tu tale kutya, mepya lyetumo lyOmuwa otaka longo mo shike. Ngele oshishona shi vulye kiishona ayihe osho ngaa shometumo lyaakulukadhi.

Okaketha kaakulukadhi ongondjamba onene; tu yi kuthileni iikondjitho yetu aananguwo. Cmuhangenwa iha sindi. Okaketha tu ka hangeneni nuuladhi wOpambepo. Ngele itatu ka sindi moluunyengwi wetu aakulukadhi, molwowindji wetu otatu ka vulye.

Aakulukadhi yangapi mOwambo nOkavango mwa hala oku ya mehanganano? Tumeni elakazimino lyeni mOmukwetu, mboka mwa hala oku ya mehanganano ndika. Tse tu uvathaneni kutya, otashi ka enda ngiini.

Omumwanyoko, Josofina Elia Onguediva.

KUKU ALBERTINA ITEUA A HULIHTA OONDJENDA

Kuku Albertina Iteua, Nakayale, omukulukadhi gwomusita kuku Sakeus Ihuhua, a hulitha oondjenda dhe eti-7/5/67. Eyapulo lyombila ye lya ningwa, osondaha yeti-14/5/67. Egongalo alihe lya hiwa li ningile elongelokalunga momayendo, moka lya kuutumba lya kundukidha ombila yanakusa a tumbulwa mpaka. Ookuume naashiwikile oyendji ya gongalele ko wo ya zi kOndonga, kUukwambi kOngandjera no kUukwaluudhi. Kuku Albertina oye omukulukadhi gwomutumwa gwotango mOmbalantu, ya zile kOndonga.

Omusitagongalo T. Heita a kwatele komeho melongelokalunga. Omukuluntutumwa a ningi euvitho lyomelongelokalunga, moka a lesa Ef. 2:17-22. A tumbula nkene euvitho lyotango mOmbalantu lya ningilwa momuti gwowala nomapulo guumbanda ga penduka maantu: "Otaa kongo shike?" Oya eta iiponga." A tumbula nkene einkelathano lya holoka sigo pwa holoka nokuli ongundu yaakriste ndjoka ya ningi egongalo lyotango mOmbalantu. Egongalo ndika olya etithwapo kOmbepo Ondjapuki, moka tse atuhe tu li mo ongoombaskena metungo. Ongerki yomOwambo oya koko mbala. Omutumwa nguka gwotango mOmbalantu, okwa mana oondjenda dhe sho ongerki yomOwambokavango ya gwanitha omimvo 10, okuza kesiku ndyoka ya nyolelwa momambo gepangelo lya-Holomende, (7/5/57). Konima yomimvo ndatu, ongerki otai ka dhana oshituthi shomimvo 100, mokudhimbulukwa mboka ya kala oombaskena dhotango metungo, ooIhuhua, ngaashi tatu shi dhimbulukwa kuku Sakeus Ihuhua oye gumwe gwaasiminari yotango mongerki ndjika noye gumwe gwomaayapulwa yotango yaasita 1925. Omukuluntutumwa a hulitha euvitho nomapulo ngaka: "Otu li po tuu omamanya genomwenyo metungo lya-Kalunga? Ombepo Ondjapuki otayi longo tuu mutse nomaashiinda yetu?"

Omusitagongalo T. Heita, meuvitho lyeyapulo lyombila, okwa tumbula nkene Aatumwa aasoomi ya pewa ompito yokutunga oshilongo shaKalunga mOwambo. Ookuku Ihuhua ya ningi aatsikili, ya humu ko, sigo Ombalantu noya tungu mpeyaka oshilongo shaKalunga. Osho ngeyi Kalunga a gandja oshilongo she kokangundu okashona. A hulitha netumbulo ndika: "Ino tila ongoye oshigunda oshishona, oshoka oHo a hala oku ku pa oshilongo".

Aakwathi meyapulo omukuluntutumwa A. Eirola, omutonatelishitayingirki J. Amakutuua, omusita gwaagundja K. Dumeni namushanga gwongerki M. Ngipandulua, ya lesa oohapu dhaKalunga dhomahekeleko nongundu yaayimbi aagundjuka muNakayale ya imbi eimbilo lyetegameno tali ti: "Ngele twa mana oondjenda, ... megulu otu nevluluko."

Omusilwalume, kuku S. Ihuhua a hulitha noohapu dhika: "Dhiginina shoka u shi na, waa yugwe nando okulye oshishani shoye." Pahapu ndhika okwa fatula nkene aantu haa dhiginine omaliko gawo nokuga patela miiketha nomakumba ga kola. Eliko lyopakalunga olyo oshishani sha simana noli shi kudhigininwa lyaa kane nolyaayugwe po kaana yomilema. A kumagidha aagundjuka oyendji ya kotokele oshishani shawo, omolwethimbo ndika edhigu. Ombepo yopauyuni ya gwayele maagundjuka oyendji noya shundula oshishani shopakalunga muyo. Jesus ota ti: "Ongoka tii nyateke niinyateke, na ngoka tii yapula niiyapule." Oye te ya nondjambi yakehe ngoka. A hulitha neuvithohalelo lye kaapulakeni ayehe tali ti: "Oohapu dhaKalunga nadhi kale dhuudhilila mune." -Eeno, nadhi kale shili dhuudhilila mutse.

Omunyoli,

M. Ngipandulua.

Gideon Mbinga ota ti: Otandi hambe-mombepo, tu leshe ha iifo ayike lele Kalunga sho tu na ompito yonombimbeli yetu wo Ondjapuki. Okutaamba iifo yOmukwetu. Otse aamuwa Jesus ne tu tanithile ehalo egundjuka otwe yi pumbwa shili. Tu wanawa lya tya ngiika. galikaneni shili tu kale twa hwama