

# OMUKWETU



Oshifo shOngerki onkwaevangeli paLuther yomOwambokavango / Die Tydskrif van die Evangeliese Lutherse Ovambokavango Kerk

No. 2

JANUALI

1967

## OTATU KA MONA SHIKE?

Mat. 19:27-30.



*Jesus oye omusita gwoonzi onke ino tila oshigunda ngoye oshishona!*

Omuntu kehe ngoka ta yi moshilonga nenge ngoka e li mo nale nokuli, ota tegelele nondjuulukwe onene oku uva nokutseya ondjambi ye moshilonga shoka kutya oyini noyi thike peni? Naalanduli yaJesus oya hala wo okutseya ondjambi yawo naa mpoka yi thike. Petrus ota pula peha lyawo ayehe sho ta ti: "Tse mbono twa thigi ko ayihe notwe ku landula, otatu ka mona ko shike?" Epulo lye otali holola naanaa kutya edhiladhilo ndika olya kuyunguta moomwenyo dhawo ayehe, omolwashi Petrus a longitha oshitya shoka: "tse." Pamwe oye shi kundathana mutwike omasiku ogendji, sigo sha thiki ihe pethimbo lyokuhololwa pamukalo nguka: "Tse otatu ka mona ko shike?"

Iilonga ayihe oyi neyambeko lya- yo, naanaa ngaashi hatu ti: "Shaalula oshi nondjambi." Kalunga oye tuu ta gandja eyambeko alihe kungoye, tali ziilile miilonga yoye, moonkondo dho-

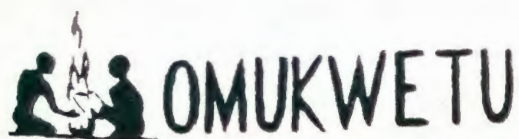
ye nomoondunge dhoye. Oye e ku peashihe to shi pumbwa mokwiimonena ondjambi yoye. Ngele ito longo sha, ito vulu okutegelela eyambeko. Nkoka kwaa niilonga, kaku na wo eyambeko. - Nomoshinima shehupitho, Kalunga okwe ku longekidhile shoka to shi pumbwa opo u li mone.

Okulandula Jesus kaku shi eihepeko ngaashi yamwe haa dhiladhila. Oyendji yomaalundili yaJesus oya pula epulo ndika, lya penduthwa mu- yo komalimbililo geitaalo lyawo efupi: "Otandi ka mona ko shike?" Oteksti ndjika yomuMateus 19:27-30, otayi yamukula epulo lloye. Jesus ota ti: Kaku na ngoka a thigi ko nokwa kanitha ayihe omolu edhina lye, a kale inaa mona oyindji yi vule mbyoka. Mepangulo lyahugunina ota ka pewa nokuli esimano enene okukuutumba kiipundi yepangulo pamwe naJesus, opo a kale onzapo yokutempa omazimo galsrael ngoka inaaga taamba ehupitho ndyoka lya li mokati kawo,

nando ye li hunganelwa nale kaa- profeti, noye li tala nomeho. Ngoka ta pewa esimano enene li thike mpoka okukala onzapo yaJesus montaneho yaakwanegulu, ota dhimbulula mbala kutya, oye ine shi ilongela, ihe, osho omagano omanene gaKalunga kuye.

Ondjambi yoyene aalanduli ya Jesus taye ke yi pewa oyo omwenyo gwaaluhe. Nando u kale ngashingeyi wa kanitha ayihe omolwa Jesus, oto ka mona omwenyo gwaaluhe. Nando u tondwe kuho, kunyoko, komu- wanyoko, komusamane gwoye, komukiintu gwoye, kezimo lloye, nenge wa kanitha ookuume omolwa Jesus, ou nondjambi. Oto ka pewa omwenyo gwaaluhe. Jesus ota ti: Itashi vulika nando omuntu a thigi po ayihe omo- lwedhina lye, a kale inaa mona omwenyo gwaaluhe. - Omuwa Jesus ne tu kwathe tu dhiginine moku mu landula nomomumvo nguka, sigo twa adha ondjambi yetu puye.

M. Ngipandulua.



# OMUKWETU

Januali 1967

## OUNYUNI INAU KU LIMBILIKA

Mefimbo eli vahapu ova limbililwa. Omilungu dovanhu efiku keshe tadi popi eshi ile shinya nde pe yadi omalipulo. Odula oyo inai loka diva, oya efela yo ovanhu omalimbililo mahapu. Ndelene ito pumbwa okulimbililwa nande.

Ounyuni ohatu u yelege wafa eloli linene. Eholi ola tulika ofulaha ihapu. Keshe shimwe omo sha longelwa naove omo u li moshikoto osho. Ndelene ololi ei (ounyuni), oi na omushingi wayo. Oye ina fa ovashingitweni. Okwa shinga nale ololi oyo nde a shiiva ondjila nawa nosho yo oko ta yuka okwa shiiva ko. Kalunga oye omushingi ta endifa ounyuni.

Okwa shiiva ofulaha oyo i li moshikoto. Okwa shiiva aishe i li mounyuni, osheshi oye e i shita. Okwa shiiva yo osho tashi pumbiwa po. Ava ve li moshikoto ngenge ove li mo nombili ile otava ngwadjulafana, Kalunga okwe shi shiiva. Osho yo ou a pota nde ta shindi vakwao moshikoto, oye okwe shi shiiva.

Moshoongalele shovakriste aveshe sha ongala muElim, okwa fatulwa kutya, itatu dulu okuwilika Kalunga tu tye ngeno enda apa ile tya ngaha.

Ou e li moshikoto ota pumbwa okumwena filu nokulineekela omushingi wololi. Oye Omwene weshito alishe. Ofye tu nokumwena nde tu mu lineekele, ehalo laye alike li wanifwe kombada yedu ngaashi hali wanifwa meulu.

### AHAA- EFUDO

Okutameka efiku lotete laFebuluali fiyo efiku laxuninwa lohani oyo, ohandi kala mefudo. Ngenge Omwene okwe shi hala, handi alukile moilonga efiku lotete laMalitsa. Jesus ta ti: "Ngenge mu hole nge, diinineni oipango yange." Joh.14:15.

L. M. Shemuvalula.

Hamushanga wOmukwetu.

### OLYE TA TOKOLA ELYENGE?

Ohaku hokololwa ehokololo lyomuhambudhi onkulungu, a kala nale moshilongo shontumba. Okwa li ha hambula iyela unene itenda yipululo nuunene a hambula omalyenge. Okwa li hi itangele oondunge ndho sho e shi okuhambula omalyenge ihaaga tokolwa nando komuntu.

Esiku limwe okwa yono. Okwa tulwa mondholongo, a mangwa nomalyenge. Okwa li a hala okufadhukapo. Okwa tameke okukonakona omatsakaneno goolinga dhelyenge, a tale ngele ope na mpoka pu shi oku-

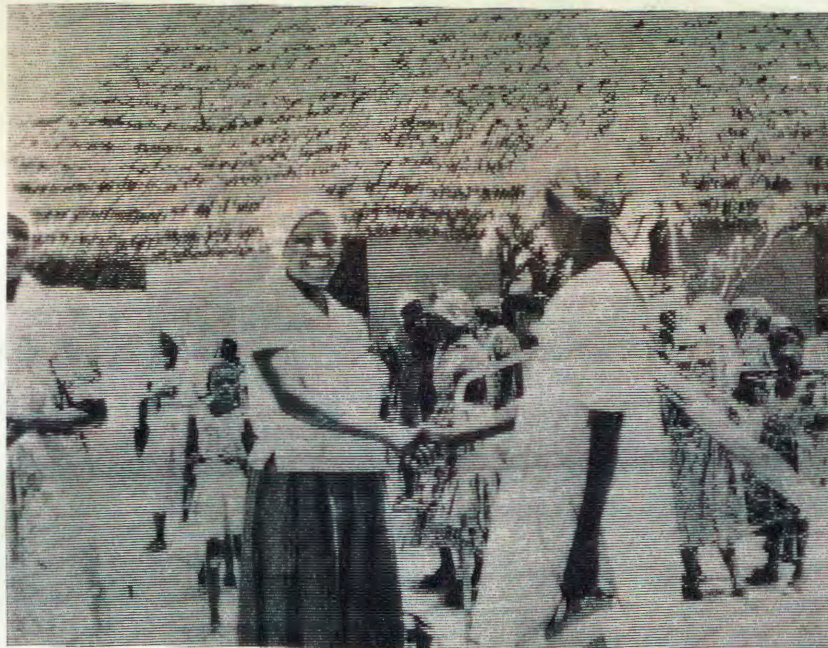


tokolwa. Unene a nika oluhodhi, sho a dhimbulula kutya, elyenge ndyoka lye mu manga, oli na edhina lye tashi ti, oye e li hambula. Okwa tseya kutya, omalyenge ge ngoka a hambula, itaga tokolwa nando komuntu oga kola. Okwa kala ano ngaaka mondholongo a mangithwa elyenge ndyoka e li ionga ye mwene.

Ope naantu oyendji ya fa omuhambudhi nguka. Inaa mangwa ashike nomalyenge, ihe oya mangwa kuu-lunde. Kehe uulunde ye u longo, owi itungu kumwe onguulinga welyenge. Methimbo lyomumvo gumwe owa ninga ihe elyenge ele lyakola. Otaa kambadhala okutokola elyenge ndyoka koonkondo dhawo yene ya manguluke ando, ihe itaa vulu sha. Oya mangithwa elyenge ye li longo yoyene ongomuhambudhi nguka twa hokolola.

Naa pulakene oohapu dhaJesus tadhi ti: "Ngele Omwana te mu mangulula, otamu kala mwa manguluka shili." (Joh.8:36). "Ileni kuNgame amuhe mwa vulithwa nomu nuudhigu. Ngame otandi mupe evululuko." (Mat.11:28). Jesus awike ta vulu okutokolapo elyenge lyuulunde.

### MWA THIKI MO?



Mwa thiki mo, mwa thiki mo? Eeno, twa thiki mo momvula ompe. Ne mwa thiki mo wo nawa mesiku ndika lyasimana? Otu nokupandula Kalunga sho e tu humbata momumvo omukulu sigo omesiku ndika ta! Ooyakwetu oyendji ndi shi inaa

thika mo? O, Kalunga na pandulwe shili. Osho pondje posheelo shongerki yOniipa aantu ya minikathana nenyanyu mesiku lyomumvo omupe. Osho wo aantu ya popithathana noya minikathana koombinga noombinga mesiku lyomumvo omupe.

**NGAASHI OLUVADI TA LI SHELA MOUSHILO FIYO OMOUNGININO, OSHO TASHI KALA EUYO LOMONA WOMUNHU.**

## A YA KETULUMUKO LAALUSHE

Eongalo laNgela ola hangwa koluhodi linene, ndele oluhodi lovakwanyama aveshe. Mefiku eti-30.10.66, omuudifi wetu, ependa laUkwanyama nongedjo yaKalunga, omwevangeliste wetu tatekulu **Andreas Shapota** a xulifa oweenda waye, ou haku tiwa Eendjedi daShapota kOnekwaya okwa lukwa edina eli, osheshi okwa longa efimbo laye alishe mOnekwaya.

Ehepu tali mu popi tali ti: Okwa shashwa 1922, a shashelwa kOkole, edina laye likulu oye Kakoto kaShapota. Okudja mefiku tuu olo a shashwa, eendjovo daKalunga inadi dja mo nande omokanya kaye, osho omumati mukwao tate Paulus Nafuka, a lombwela nge mangha hatu ehene kombila. Ehepu likwao tali ti: Momo 1924, omo a hovela oshilonga shoulongi mOnekwaya. Okwe shi longa oule weedula 10, osho omukwaita mukwao tate Elia Hauliondjaba a ti. Osho okwa ya mofikola yoweangeliste. Okwa hongwa kenda likwao moita yOmwene A.W.Björklund, ou e mu nwefa mo neenghono mo kuudifa evangeli laKalunga.

Okwa longa mEngela efimbo alishe. Okwa kala omukulunhu weongalo eedula daye adishe. MOukwanyama aushe okwa shiivika, osheshi keshe omudo ondaka yaye ya fa ongedjo o hai udika momyandi daMissioni. Oha udifa a xwama ta ti: "Akutukutu vawwange." Nge wa udu ta ti: "Ndongo nandongo," oku li popepi nokutya, Amen. Nge ta udifa, oshili kaku na ou ta dulu okukofa. Shimwe ashike, omaudifo aye kamale nandenande, onghee ovanhu ove shi koneka nohava kala va dama mo omesho tave mu tale eshi ta popi inava hala a xulife, ohaluka kwa ti, ndongo nandongo omomwenyo waalushe, Amen. Ondaka yaye oya li ya shitika ya fa i nokawanda. Nande na kale nomukolo, ondaka yaye ihai fiti. Ai, olyelye mbela ehe mu shii? Mbela hayou ina enda mEngela.

Okwa longa oshilonga she mu yelifa pombada. Mefimbo lelundululo lOmbibeli yOshikwanyama, ova longa pamwe nomuhongi waye ependa likwao Hamunyelawokafingo a fa onduli waHedite (Rev.A.W.Björklund). Tatekulu A. Shapota okwa kwafa mukwao melaka lOshikwanyama, fiyo elundululo alishe ola pwa. Ina wana mbela okukala nedina linene?

Omukwaita ou okwe tu lekela meleloongalo, a hala okudimbulwa a ha hoololwe vali nande momahoololo. Eleloongalo la li la indila e lididimike, ndele ye ta mwena ashike. Oshoongaleongalo eshi she uya, ova li va hala ve mu shune mo, ndele ye okwa ti: "A, onda loloka unene." Omupashukilishitai I. Nhinda okwe mu popila a fude po. Ndele okwa hoololwa a kale omutumwa weongalo moshoongaleleengeleka. Okudja moshoongaleleongalo okwa ya pamwe natate I. Nhinda momalweendo momaongalo omoushilo wOukwanyama, omo a udifa eudifo laye laxuninwa. Eshi va aluka, okwe uya e na eshikisha nomukolo, po opo ngo pa hovela ouvela waye opo. Moshivilo shetumo neudo okwa tumina mo ashike omakundilo eli mokambapila Mat. 28:18-20 "Ame onda pewa....." Eendjovo edi okwe di udifa luhapu moshivilo shetumo nokwali e di hole unene, hadi shambula omwenyo waye. Ava mwa li moshoongaleleengeleka mEngela, omwa mona vali eshi a tuma mo ekundo ngaashi eli.

Ombila yaye oi li momaendo mOnekwaya. Epako ola ningwa ponhi-4 komatango. Efiku olo omambo okwa li e na okuningwa pokangeleka kaNekwaya, ndele inaa ningwa vali, ova kala ashike va teelela epako. Pepako opa li ovanhu vahapu, ovakulunhu nounona ve fike 228. Opa li ovaevangeliste vakwao vane novafita vavali J. Mufeti na N. H. Shinana, ou a ninga eyapulo nepopifo lotete pombila.

J. Mufeti naye okwa popifa ovanhu, nosho yo omwevangeliste omukulunhu omuhungu tatekulu A. Nempembe, nosho yo omulongi tate E. Hauliondjaba. Opo okwa ningwa ne nangeko noupuna nexulifo. Pombila omufiyekadi meekulu Mukwanangobe (Anna) waMuahala ou a kulupa neenghono, okwa lila mokushakeneka oshikefa shoshimhu shomushamane waye. Omufi ou okwa li omuhungu weedula 82, ndele okwa kala alushe a ndjanga a fa omunyasha. Ha ende neongalo alishe a londa okambashikela kaye, vati oko Shiweda sha weda komaulu, noha talelepo ovakulupe vakwao aveshe veongalo letu. Pombila opa li vali omukulukadi omukulu wanakufya omukulupe weedula di fike lunga 89. Omufi inava pewa nande oludalo vo nameekulu Mukuanangobe.

Osho omapopifo oluhodi okwa ningwa meefya yo. Meongalo alishe

oluhodi ola kala mo, osheshi movakulupe meenduda momikunda omo kwa li ha talele po, omwa dja omakundilo nomaudito oluhodi linene, neefya daye oda lilwa fiyo ominghulo deongalo letu alishe, kovana, kovakulunhu vakwao nokookaume kaye. Osho omuudifi ependa omulididimiki nomunamikalo diwa, okwa ya ketulumuko. Omwene ota kufa po ovamati novapiya vaye fimbo omafimbo madjuu inaa holoka, opo va ka tulumukwe.

Ehepu eli ola xupipikwa  
kuN. H. Shinana.

**NDELE EI NGENGE TAI HOVELE OKUNINGWA, TALENI POMBADA NYE MU YELULE OMI-TWE DENI, OSHESHI EXUPIFO LENI OLA EHENA POPEPI.**  
Luk.21:28.

### FEBULUALI

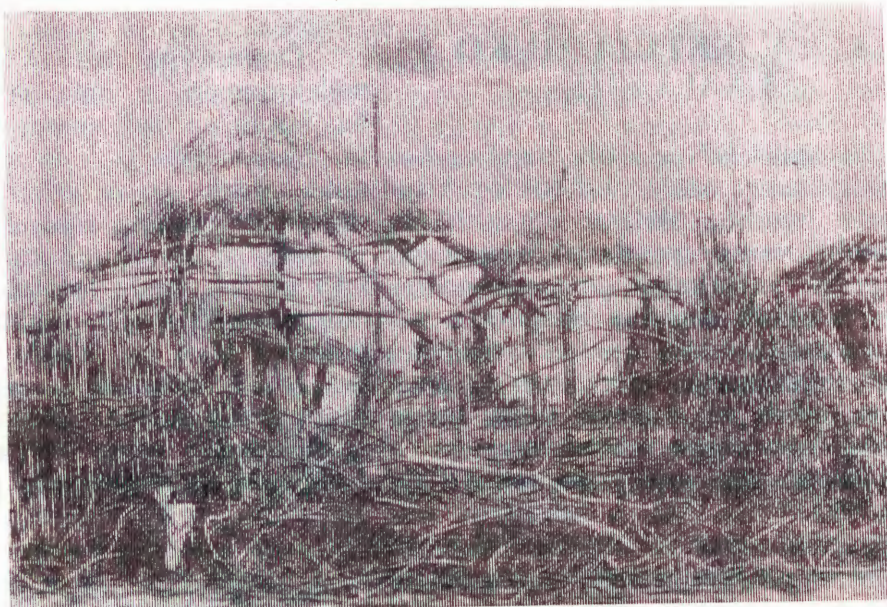
- |         |  |               |
|---------|--|---------------|
| 1. W.   | Mark.6:1-6.  | Mat.14:1-12.  |
| 2. Do.  | Mark.4:26-29.  | Mat.14:13-21. |
| 3. V.   | 1Kor.2:1-5.  | Mat.14:22-36. |
| 4. Sa.  | Hebr.6:1-8.  | Mat.15:1-20.  |
| 5. S.   | <b>OMPITO YEIDHILIKO</b><br><i>Ondjila yondjambo yohole yaKalunga.</i><br>1Tim.2:4-6. Joh.12:25-33.<br>Jes.52:13-15.           |               |
| 6. M.   | Luk.13:31-35.  | Mat.15:21-28. |
| 7. D.   | Luk.9:18-23.   | Mat.15:29-39. |
| 8. W.   | Joel 2:12-19.  | Mat.16:1-12.  |
| 9. Do.  | Luk.9:57-62.   | Mat.16:13-20. |
| 10. V.  | Jes.58:5-12.   | Mat.16:21-28. |
| 11. Sa. | Mark.9:14-29.  | Mat.17:1-13.  |
| 12. S.  | <b>ESIKU LYOTANGO</b><br><b>LYEGALIKANO.</b><br><i>Esiku lyeitedhululo.</i><br>Eps.37:7. Jes. 66:2.<br>2Kor.13:6.              |               |
| 13. M.  | Jak.4:1-10.  | Mat.17:14-21. |
| 14. D.  | Jak.1:13-18.   | Mat.17:22-27. |
| 15. W.  | Hebr.4:14-16.  | Mat.18:1-14.  |
| 16. Do. | Hebr.12:1-7.   | Mat.18:15-20. |
| 17. V.  | Mat.16:21-28.  | Mat.18:21-35. |
| 18. Sa. | Mat.12:38-42.  | Mat.19:1-12.  |
| 19. S.  | <b>Os. 2 yomEidhiliko.</b><br><i>Eitaalo.</i><br>1Joh.2:7-11. Luk.7:36-50.<br>Jes.42:5-7.                                      |               |
| 20. M.  | Joh.7:14-18.   | Mat.19:13-26. |
| 21. D.  | Iil.5:17-29.   | Mat.19:27-30. |
| 22. W.  | 1Sam.3:1-10.   | Mat.20:1-16.  |
| 23. Do. | Jer.20:7-13.   | Mat.20:17-28. |
| 24. V.  | Hebr.5:4-10.   | Mat.20:29-34. |
| 25. Sa. | Mat.21:33-46.  | Mat.21:1-11.  |
| 26. S.  | <b>Os. 3 yomEidhiliko.</b><br><i>Ekondjo lyokukondjitha oonkondo dhomilema.</i><br>Ehol.3:14-22. Joh.12:37-43.<br>Jer.26:8-15. |               |
| 27. M.  | 1Petr.1:13-21.   | Mat.21:12-17. |
| 28. D.  | Mark.6:7-13.   | Mat.21:18-22. |

## MOWAMBO OIMUNA OYA DE- NGWA KOMUTENYA

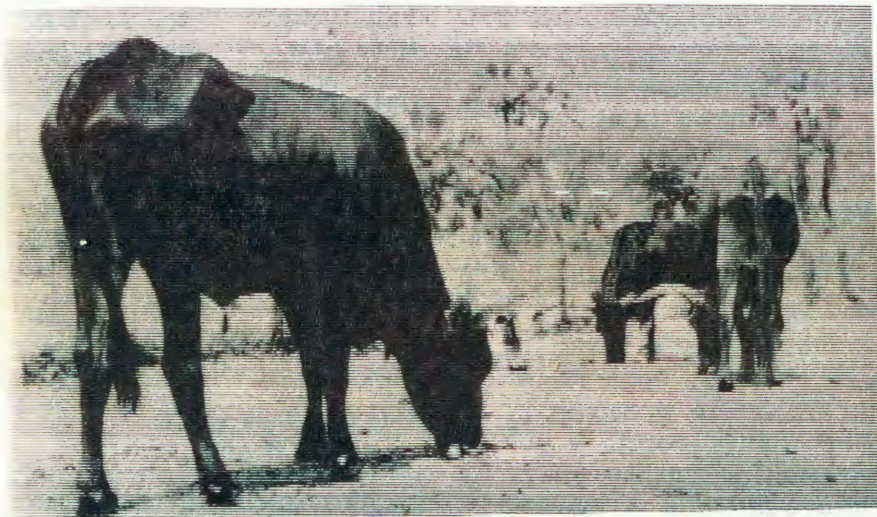
Odula eshi ya anya okuloka diva, oimuna ngaashi unene eengombe oya kala mondjala. Oya kala tai kunyakunya pedu nokukonga oikulya. Oundongi va fa hava kala hwepo kanini, osheshi ngenge va etwa mo kondjala ihava tongola vali osho tava li. Osho va mona otave shi tula medimo.

Twa koneka, odula oyo nanga mana. Shima tuu inai loka, ope nenta nondjala kukeshe shi nomwenyo kombada yedu. Ngenge ya loka, nena aishe oya hafa.

Fiyo ehovelo laJanuali 1967 opa kala enota keembinga neembinga. Oovene vomifima ove di tula omakumba. Ile pomatambi ovanhu inave li nyamukula nawa nombili. Ove li anyena omeva ile va kufafana po. Taleni, Kalunga okuhole ovanhu aveshe ova-yuki novalunde nde ohe va lokifile odula yaye. Tu panduleni alushe oshali shaye.



*Omumvo 1966 yamwe ya thigi po omagumbo gawo. Mefano otamu monika egumbo limwe lya thigwa po kooyene. Ngashingeyi oongombe omo hadhi uhala. Ku wete dha panagula iinima ayihe? Egumbo lyolyene inali tungwa lyakola naanaa. Ope nomagumbo ogendji mOwambo ga thigwa po kooyene. Ooyene ya ningi oonkolwi negumbo tali halakana. Lyoye oli li ngandika? Ndika otali holola wo uukatume.*



*Sigo esiku 13/1/67 pomudhingoloko gwOniipa opwa kala oluteni olunene. Oongombe odha nanga nayi. Odha kala tadhi kunya owala pevi uuthinde womwiidhi. Nuumvo lwo-pokufu, ino dhimbwa okugongelela iimuna yoye iikulya. Yi gongela oyindji, u paluthe iimuna yoye pokwenye taku ya.*

### THIKAMA YELA.

Galukeni, ileni ku ngame, hupithweni, one ooha adhihe dhuuyuni, oshoka ongame awike Kalunga, kakuna we gulwe (Jes. 45: 22).

Nuuladhi nesilohenda alihe, Omuwa Kalunga ote tu ithana tu ye kuye tu kale aana ye yomuuyelele washili. Omuwa Jesus ina hala tu ende momilema nomomandangalati, awe okwa hala tu ende puye twa landula oshinkoti she. Tu kale aahupithwa noyana ye shi ku inekelwa. — Eho olyo uuyelele wolutu. Jesus okwa hala u galuke opo a ninge eho lyoye u mone ondjila yuuyelele.

Ano eho lyoye ngele lyu uka, o-lutu lwoye aluhe olu nuuyelele. Ihe eho lyoye ngele ewinayi, nolutu lwoye aluhe lu nomilema (Mat. 6: 22-23). — Uva ewi lyaMbepo Omuyapuki sho tali ti: Tala, onda thikama posheelo notandi konkola, ngele ku na ngoka tu uvu ewi lyandje note egulula ndje, oku ye tandi ya notatu li pamwe uulalelo, noye pamwe nangame (Ehol. 3: 20).

Ekonkolo ndika otali konkola mukehe gumwe. Mbepo Omuyapuki okwa hala a ninge omwenyo gwoye. Epafras Emvula.



*Uundongi owa kala wu uvite ondjala nenta. Okandongi nkaka kopOnampadhi oka thikama melundu ka limbililwa. Akutu oluteni!*

*Willie Willem, Otyiwarongo, mombilive e i tu nyolela ya nyolwa mOtjiherero, ota ti: Sho ho landitha otombo, owa tseyu tuu kutya ehalasa ndyono holongitha olyu udha T B? Oshoka iho li yogo, nongele oho liyogo, oho li yogo momeya tuu ngoka wu uhalala to longitha. Tashi ti kutya, nomeya ngoka ga longa ethimbo sho itaga lundululwa go kaage shi omapyu nago ogu udha T B. Kotokela po mpo-ka.*



*Omusitagongangalo Abisai Shejavali muSoomi pethimbo lyoshituthi shepito lye momakonakono.*

## OTWA PUKA ILE?

Onda hala ndi popye kombinga yovamati vakwetu, osheshi ondi wete ko ombedi yakula. Otwa puka ile otwa penduka?

Eshi ho di mOushimba to i mOwambo, keumbo leni oho ka longa ko sha tuu? Ovaninilela hava ka longa sha. Vahapu otava ka endaenda ashike efimbo alishe. Owe uya meumbo wa hanga eumbo leni la hepa

*A. Nangolo Johannes*, ota nyola ngeyi: Kuume ngele u li namukweni piilonga yimwe, nenge hamu longo paahona ye lyaathane omaushiinda, kala naye wa fa u li namumwanyoko. Nando inamu za koshilongo shimwe, yakulathaneni ongomuntu namumwayina. Manga one amuhe aawambo, otashi ti mukweni ngoka mu li pamwe naye, oye nyoko ye oye ho, oshoka aalumentu shaa ye li mokuti, ayehe yamwe.



Mefano ndika oto mono nkene omagumbo goshiwambo taga lunduluka. Pamwe nihenguti niiti nomano ngoka hatu longitha, megumbo omwa tungilwa ishewe oondunda dhoombaskena ndhoka hatu ti "uukuma." Osho wo momagumbo ogendji omwa tungwa wo oongulu dhomala ogendji. Aantu ya mono kutya oondunda dhuukuma odhi na othina, onke oyo oya tokola okutungwa oongulu dhomala o-

gendji. Dhimwe dha kumbwa nihenguti nomwiidhi. Ishewe aantu ya ndhindhlike kutya, omulilo ohagu fike po nuupu oongulu dhihenguti, onkene oyendji otaa kumbu niipeleki. Omalunduluko ngoka otaga holola kutya aawambo komeho otaa ka kala moongulu. Ndi shi kokule ihaku thikwa ngula? Eeno oshili, oshoka omukulugwonale okwa ti: "Shii shandjala ohashi ku fala keloolo.

## ONGHUNDANA YOKUKALKFELD

"Paife muKalkfeld omwa tungwa oskola yovadalelwamo. Oyo ya kala ya pumba mo nale. Ounona vamo ova kala hava ka kongka eeskola kumwe kulili nde paife ova hepuluka."

Eshi osha popiwa komulongi Immanuel Hamunjela womuKalkfeld. Hamunjela okwa longa eedula nhatu mOvenduka oskola yovawambo muKatutura. Omudo 1966 okwa tameka muKalkfeld.

noilonga oihapu tai dulu okulongwa kwove nde oho longo tuu? Ndi shi oho kufa ashike ombaskela yoye nde to i oku wa hala. Osho to uhala totondauka neendjila neekamba wa fa omhepo. Nge wa ya mOwambo keumbo oko tuu hoi? Vamwe vamwe va ninga eeshondolo domOwambo. Omo ne tava kolokoshele.

Handi ku pula vali. Eshi wa mana odalate yoye, eshi to i mOwambo keumbo leni oho fiki ko ngaho? Wa fa ashike ho xulile pOndjondjo ngaa-shi vamwe hava ningi? We lininga wa fa oimbwela oyo i li oku ihe na peumbo lavo ili ashike moushondolo? Taa, ove ou lengifa. Oshiwana ngenge tashi shunduka oove to shi shundula ou u nomikalo di li ngaho. Di efa po.

J. Teofilus

"Paife otu na eengudu okudja kudounona vanini fiyo St. 4 nde otwa hala natango tu mone eestanda dimwe. Moskola yange ohatu longifa elaka lOshihero. Ope na ovalongi vakwetu vatatu ovatakumi nde otu na elongelokumwe liwa," osho Hamunjela a hokolola natango.

Meshitele Hamunjela okwa dalelwa kEhenge mOputu nde a kala mEdundja. Oskola yovamati okwa kala mEngela. Konima okwa ka longa momebelewa mOshomeva. Oskola youlongi okwe i longwa mOkahandja. Ota fuda mEdundja nde opo ta shuna kuKalkfeld.



*Omulongi I. Hamunjela.*

## AMUSHANGA OMUNENE GWONGONGAHANGANO A HALA UKUMWE

Geneva.—Dr. Andre Appel, amushanga omunene gwongongahangano yaakwaLuther muuyuni, mesiku lyomumvo omupe okwa popi oshipopiwa she shopauhamushanga we. Okwa indile aakriste ayehe, ya kondjithe oshiponga shokuhahangana noshokudhina uukriste.

Mekundo lye enene, e li popi moradio onene yongongahangano yaa-kwaLuther yokutuma oohapu dhevangeli (Radio Voice of the Gospel) ndjoka yi li muAddis Abeba, Ethiopia, okwa fatulula ngeyi:

Mokuhololapo uukuume nelongelokumwe lyomuwa gwetu muuyuni mbuka, otatu pumbwa tu kongelela notu longe mbyoka tayi holola uukumwe womuYe. Sho tatu tala momvula ompe, natu inekeleni ekumidho noonkondo ndhoka tatu mono mugo. Omukriste ngele ta kala nokutala mbyoka tayi ningwa moshigwana shaandjawa, otashi vulika ta kanitha uupenda weinekelo noita minikile we nawa. Ihe ngele kehe gumwe ta dhiginine eithano lye, ondi inekela iinima oyindji otayi lunduluka. Otandi pandula elongelokumwe lyoongerki noyendji yomune.

Ongongahangano polwayo, oya hala okukoleka eitaalo lyaakriste nokuyamukula omafaneko agehe. Ilonga mbyoka tatu longo kayi shi sha shilwe, ihe oyo tuu mbyoka twe yi uthilwa kOmuwa Omuhupithi. Nomomvula ndjika ompe otu na einkelo, hamoluuwanawa wetu, ihe omolweitaalo. Oshoka twa tseya kutya, ngele otatu endithwa kOmbepo yaKristus, ehistori otatu li ukitha komalalakaneno galyo. Ongongahangano otayi ka gwanitha nokukoleka omafaneko guukumwe, ombili neyakulathano, mbyoka ya halika unene naambyoka tatu yi mono muJesus Kristus. Tandi mu halele Omumvo Omupe omwanawa. Kalunga ne mu yambeke unene mokuhokolola kweni ohole Ye kaantu.

### IMIKENI OYIIMATI

Otwa shiiva eyele lomukwiyu la popiwa mOmbibeli. Omukwiyu inau hafifa mwene, owe mu nyemateka kesho omudo. Kawa li wa fya po manga, owa kala tuu tau hape omafo nde tau kulu, ashike inau ima nande oyiiimati:

Omukwiyu inau ima ashike oyiiimati, ndele owa kala tau tutula edu olo le u dingilila. Osho Omwene otakongo kovantu vaye oyiiimati, ndele ite i mono, oha mono kuvo omafo aeke. Ohava popi nomilungu nde itava longele sha Omwene nomake avo. Ova fa ve nomwenyo ndele nani ova fya.

Osho ovo ve nomikalo dii tava yandje oshihopaelelwa eshi shii kuovo ve li pomudingililo wavo. Ova fa onhafi ilula oyo tai lulike olumbololo alishe. Ihave li pe ombedi komapulo avo.

### KALUNGA OHU UVU OMAGALIKANO GOYE?

Eeno, oshoka okwa ti indileni otamu pewa. Ihe ino tya kutya, oto mono ngashika naanaa ngoye mwene wi indile, nopethimbo ndjoka wa pula.

Siku limwe Kalunga okwa mono kutya, oshinima shoka twi indile inashi tu opalela noitetu pe shoka inaashi tu opalela. Okamwandje okamati okashona oka indile ndi ka pe oshimbele shi nomayego goshiponga, anuwa ka hongwe opena yako. Ngame inandi ka pa nando oshimbele shoka, oshoka otashi vulika ki itete nayi koshikaha. Inandi ka pa ngaashi ki indile. Ihe onde ka pe shoka taka pumbwa shili: Onda hongo opena yako. Osho Kalunga ote tu pe shoka a tala she tu opalela.

Ndelene Omwene eshi e uya a konge oyiiimati, ine i mona kuvo. Ponehele yoyiiimati Omwene okwa didilika oyo ve inyonaunifa nokukala kwavo kwii. Pamwe ofye tu li mongudu ei. Ndelene Omwene ta lo mbwelwa elaka lilula: "U teta po! U hanauna po! U dima po! Dima po edina laye momadina ovahoololwa voye!"

Lao linene eyele lomukwiyu inali xula nomalaka aa makukutu. Opa li umwe ou a popya: "U efa vali inou ka po! U tutula natango oushoso, pamwe tau ka ima ngaho!" Ou oye Omwene woshikunino Jesus Kristus a popya elaka lefilonghenda. Oye te tu ilikanene kuKalunga.

Momudo ou mupe oto teelelwa u ime oyiiimati, ha omafo ashike. Inatu shiiva eshi omudo ou tau tu etele, ndelene efimbo lokwimika oyiiimati tai hokiwa oli li po nonena.

Omuniyoli.

## OHO LESHA TUU OMBIBELI?



Omake avali nge taa pandula, otapa holoka ewi. Eke limwe itali eta ewi. Osho shi li mokulesha nomokukonakona Ombibeli. Ope nokukala ovanhu vavali. Ombibeli i popye, fye tu nyamukule. Osho nge hatu kala nokulesha nokukonakona Ombibeli, ohatu shiiva eendunge dipe.

Ombibeli oi na eendunge dayo nehalo layo noitya yayo, oyo ya yooloka kuyetu. Ngenge eendunge detu hatu di eta popepi neendunge dovanoli vOmbibeli, otape uya eenghundafana diwa nde hatu mono oupe neshituluko mokukalamwenyo.

### KETUNDA

Omwevangeliste Mateus Shininge ta longo oshilonga shOmwene kEtunda, okwa talelapo Oshinyanyangido eti - 12/1/67.

"Otu li nawa kEtunda. Ohatu longo pamwe nomushamane Soini Nuuyoma omulongi naKristofina Michael, ove li nawa nde ove mu kundila po," osho a popya.

"Ovanaskola ounona novakulunu ohava ongala nawa. Ovakriste kwinya ovahapupala. Oukriste nande otatu pangele vahapu, onghene pe nongudu inene tai pangelwa koupaani womakoto netangalalo nodino," a hololola natango.

"Onda fiya inaku lokwa manga. Nde otwe lineekela Omwene ote ke tu pa ngaashi a hala," a weda ko natango.

Omushamane Shininge okwe ya kOniipa a kundafane eemhumbwe domoshilonga shaye mombelewa yongerki, Omukwetu nOstora yomambo. Ohatu halele oshilongatumo mEtunda eyambeko lOmwene momudo ou nokomesho yo.

**Oshiwana sha endaenda nale momilaulu nomomudile wefyo, paife otashi pashukile ouyelele!**

# OUNYUNI OTAU TONGO SHIKE

## OVALUSIA OVA HALA VATWALA OMUNHU KOHANI

Eenghundana da dja muMoskou, otadi ti: Rusland ola hala okuumba oshitukidila shi na omunhu kohani. Ova faneka luhapu kohani nde twa kundana omafimbo a djako kutya, ova wilifa nokuli nale kohani oshikonakonidila shavo. Paife ova hala nee va twaleko omunhu e na omwenyo.

Ovanandunge vamwe ove shi libililwa, ndelene eenghulungu doilonga yekonakono lomomhepo muRusland otadi ti kutya, otashi duhika naanaa.

## EFYO LOMBADILILA

Efiku eti-9/12/66 otwa fikama muWalvisbaai twa yuka mOwambo noshihauto, twa li vahamano. Potundi 12 oshihauto shetu oshe lidenga mumwe nashikwao. Shetu osha ka twa kwinya eembuli lutatu. Omushingi wetu okwa xulifa oweenda waye pefimbo tuu olo.

Otwa shuna kuWalvisbaai nouyahame munene. Ava twa xuha po otwa hala alushe okuhambelela Kalunga, osheshi apa twa xupila inapa wana okuxupila omunhu, ekwafo lokombada olo alike la li po.

Tu endeni alushe netumbulo momadiladilo etu: "Omwene tu longa okuvala omafiku etu fimbo tu li po." Onye amushe ovashingi voihauto, lungameni alushe, u tale ou to shakene naye mondjila, osheshi pokupingafana kwoihauto oshiponga alushe oshi li popepielela.

S. Nghitaunapo.

## OMBWA YA YASHWA

Omumati omuwambo umwe, okwa twalwa moshipangelo mOkahandja mafiku aa, a lika nai kombwa yomuhona waye. Ombwa fimbo ye mu londa, ya yashwa nde oya fya.

Ombwa oyomutilyane mwene wofaalama Ombukombapa mopeleka yOkahandja. Oya li hai kala efimbo alishe ya pandekwa melyenge. Ngeenge ovapiya vomuhona ou va mane oilonga nde va ya koipondoka yavo, opo ne ombwa ohai pandukululwamo. Fiku olo shindele okwe i mangu lula melyenge. Mboli omukalele waye umwe oku li popepi konima yomuti. Vati ine mu mona. Ombwa ya nhukila komumati nde tai mu li. Shilumbu okwa kufa diva ondjebo nde te i yasha.

## OKWI IKOTOKELE MWENE EWI

Omumati omugundjuka okwa taula ekende lyongerki Onguta pondjondjo. Okwa piti mekende nokwa yi mela limwe lyompungulo yongerki ndjoka a hala okuyaka.

Omwevangeliste Filemon Nashihanga, ngoka ha tonatele ongerki ndjoka, okwa zi kegumbo lye nokwe ya pongerki lwopotundi 12 yomutenya. Okwi itsu miitandu yomahalasa ya halakana pevi. A ndhindhilike kutya, omufuthi okwa gwayele mongerki. Pondje ompadhi kayi po, oshoka lwopomulongo gwesiku olyo tuu ndjoka okwa nyaganywa nombepo oya pepepo ompadhi.

Ya ka tye tuu ngeyi, omufuthi omo nani e li a lala a tya thilu. "Tondokeni, hayi, ileni matukeni," osho sha kala po.

Omutonatelishitayingerki shondonga omusamane Timoteus Shipanga, egumbo lye epe oli li pooha dhongerki. Oshihauto she okwe shi tsu mbala oshipatululo nokwa matukile mbala kaandja mwene gwondjondjo omusamane Petrus Shijukifeni. Maashijukifeni okwa tiwa anuwa omusamane oku uka penipeni.

Mongerki omufuthi a hala ando a ze mo a pite mekende. "Kuutumba, kuutumba. Ino shi yelekela nando u zemo. Ngele we shi yelekele, ku wete sho shi li moshikaha shandje, oto thigi ndje shila nda lala," osho Nashihanga a ganda omufuthi.

Tatekulu Shipanga okwa tsu koomiya dhashinana kotyaatyaa, ete shi lombola ko. Tala ne ta. "Tu yeni u tale muhongi," oonalunanga osho dha ti. Mepathimo lyeho, odha thika nale pongerki.

"Owa ka tala shike mongerki," omufuthi a pulwa naantu ya kundukidha yu udha okatalekonawa. "Ongoye olye noto zi peni noshike shi ku na to gwayele mongerki?" Aye ngiingingiini. Shoka sha landulako ito shi lombwelwa we. Konima yokathimbo a falwa kondholongo.

Taleni, taleni, aamentu ne, inamu huna we. Tileni okuyaka. Ngoka to yaka mongerki nenge to yaka moshinyanga shegongalo, oto yaka Kalunga mwene. Ondjahi yaKalunga otayi adha shaa ngoka ta yelekele oshiponga sha tya ngeyi.

Odula mOwambo oya loka keembinga.

## LYEVANGELI

### MORADIO

ometa 31

otundi 8. 30.

Owandaha: J. Amakutuua, T.Heita.

19 Febr. 1967.

Ohatu tameke okulesha embo:

"Omona wohamba."

Owandaha: P. Andreas.

26 Febr. 1967.

Ohatu twikile okulesha "Omona wohamba."

Owandaha H. Nakamhela.



## ODULA OYA LOKA NAWA MOREPUBLIKA

Omulonga Vaalrivier ouyadi. Oitukulwa ihapu yamo oya lokwa unene odula ihapu. Keembinga neembinga doRepubilika okwa dja omalaka kutya, oya loka unene. Vati oihauto ivali yovalaule, ya hangika i li mondjila, oya nyengwa okuya komesho, shaashi oshitauwa sha fitikwa po filu komeva.

## OVANHU OMAUYUVI TAVA DIMI OMUNDILO

Ovalumenhu 250,000, tava kwafwa keedila, ova kala tava kondjifa okudima omundilo wepeya muNieu-Suid-Wallis. Eenghundana edi oda popiwa moshilando Sydney.

Ovadimi vomundilo muAustralia ova pewa oidimifo. Vamwe otava ende neepomba di li keembuda di nomuti wokudima epeya. Oihauto ina eetenga domeva tai endelele okutwala omeva peenhele tadi pi. Eedila otadi umbu omaboma omiiti dokudima omundilo opo pwa xwama omundilo. Osho oilonga inene ya pula oimaliwa ihapu, oya kala po mokudima omundilo wepeya moitukulwa inya.

## 10 YA SI MOSHIPONGA SHOMINA

Moomina dhaTransvaal omwa zi onkundana. Aaludhe 10 oya sile momina, omiligu dhotuluku ondhigu sho dha topa. Aantu ya adhika ye li miilonga sho ya adhika koshiponga. Opwa hokololwa natango kutya, aantu yalwe inaa monika pethimbo lyetseyitko lyonkundana kutya, oye li peni. Ihe kwa dhimbululwa kutya, natango yalwe 10 kaye wetike.



*Aune Shilongo okwa fanekelwa mpaka e li mokati kookuume aasoomi.*

## OMU LI TUU MONDJILA?

*J. Siuanje Eneas, Oranjemund, ota pula ta ti:* Oshu uka tuu shili okulandithapo epya, omusamane a sipo ihe omukulukadhi noyana omo ya thigala? Ota-li landithwa po shike? Oshike mwene gwomukunda ha pula ishewe a futwe komuselekadhi nenge komwana gwana-kusa, lyo egumbo oyooyene nale? Yamwe epya oyo ye li kokola po? Nenge oyo ye li landele ondilo? Oshike ooyene yomikunda taa fulunyeka ngeyi aantu? Naakuluntu oshike itaa pukulula epuko ndyoka? Epuko ndika olya taandela Owambo ayihe. Omapuko gamwe otaga yolitha.

## OMWOONGO U LILILA, OYOU HAU KU KUMININE

Otwa koneka nawa eputuko lokahanana pwina, manga ke li po kani-ni. Hatu mono nakudala nghe e lile po omona, nokwe lipyakidila, opo tuu a kwafe omona waye ashishe te shi pumbwa. Ote likupaula omolwo-kaana kehe shii okupopya nawa, ina oha uduko kutya, oka pumbwa shike pefimbo opo.

Molwokuha yoolola ouwa nouwi wokaana, okaana taka dimbulukwa diva oudjuu wako, notaka dimbwa okukoneka ohole yoshili oyo ke holike kwina. Onghee take likongele o-

## OLOYE MBELA?

Elima lokuupika, (oshikule) li lipo lipelala, la dimbiwa monduda yovaenda, oloye?

Malakia Hauuanga, Tsumeb.

makwafo ako elili noku lili ngaashi okulila. Elilo lokaana olo eifano lokaana.

To mono nghee okaana taka lilile ina ngenge ta dipo puko, konima yokafimbo kaxupixupi okaana oke udite inaka wana okulikalala akeke. Ndele meme ngenge te ka alukile, nena ekuwo ola mwena. Mounini wako taka dimbulukwa naana ovaneumbo lavo. Osheshi mokulila kwako nge tapa holoka omuneumbo lavo umwe noku ka mweneka, nena eendila da xulapo. Oke udite natango otaka xupu nawa, noke li meameno lawana:

Osho yo naanaa fyee onunona novanyasha vopefimbo eli novanashikola vomido edi dopaife. Fyee vene otu shishii otu na ovafilishisho novahumbati veemwenyo detu pamhepo. Ovo tave tu yandje alushe momailikano kuTate Kalunga, ou te tu pe eemhumbwe detu adishe.

Ndele ngenge hatu hangika komalimbililo ile komaudjuu asha ile komakufikufi onyununi ou, hatu yandje omapuko-pulo kutya: Pamwe ovailikaneni vetu ove tu dimbwa po hano? Osheshi inashi wana ngenge hatu li ilikanene fyee vene atuke.

Onghee eindililo letu oleli kunye oonakudala: Inamu tu efa po moku tu ilikanena. Tate Kalunga e tu we-deleko eendunge nohole nombili, ehangano nelongelokumwe, oupenda noudiinini, unene eshi tu li pehovelo lomudo mupe.

Eeva R. Shekunjenge.

## OHANDI LESHA OMUKWETU NENYANYU

Omutoolinkundana a ende nondjila esiku limwe. Mokupitilila egumbo limwe, okwa mono omukulukadhi omukuluntu a gondja awike momuzile gwokankete ke li pooha dhepya. Omukulukadhi miikaha ye okuna oshifo shOmukwetu ta leshamo. Pooha dhe ope na ombimbeli, opwa li wo ondooha yoombale, oshoka okwa li ta tungu ontungwa. Oha ningi mpa a tungu, mpa a lesha.

“Kuku, oto lesha nenge oto tungu? Oshike wa gondja nomambo noontungwa?” “Otandi kwatele mumwe, ashihe oshandje,” osho a yamukula. “Owu uhala po tuu nawa? Oshike wa gondja ongoye awike?” “Mokankete omu nomuzile omutalala nawa, ishewe onda hala okugundjila ndi leshe nondi tunge ontungwa yandje, oshoka megumbo omu na omayogelelo,” a yamukula.

Omukulukadhi oye kuku Kaarina Paulus mEpale mEgongalo lyOniipa. “Owa nyanyukilwa okulesha Omukwetu?” “Eeno, Omukwetu oha tsu ndje omukumo, ye ishewe ohe etele ndje onkundana dhuuyuni ndaa kale moomposi. Ku wete ombimbeli yandje ndjino? Ohe tala mo oonzapo ndhoka dha gandjwa mOmukwetu,” osho ya kundathana.

## KALUNGA E TU XUPIFA

Efiku 9/1/67 oihauto yomatungo eefikola doshiwana oya enda ya landulafana i li itatu. Oya twala ova-tungi kOkahao. Oshihauto shetu osha li monima.

Pokati kOnguediva nOshakati oshihauto shetu oshe lidenga melambo. Opa li komesho ondwi ihapu nde omushingi elambo ine limonena kokule. Oshihauto kongalama osha wako. Omushingi ka li a vilavila nande, okwe shi mbilika diva. Oshihauto inashi kandoma nande.

*Jonas J. Nepaya, Onayena, ota ti:* Kaleni mu hole aamwanyoko. Inamu kala nolutandu mokati keni. Omuwambokavango ta kala nokatongotongo nomuwambokavango omukwawo okwa gwana a dhengwe nomapokolo. Inamu nyengulathana oshoka one aamwayinathana. Yakuleni aayenda. Eyakulathano lyetweni lyoshito inali kuthwa po komikalo dhoshingolo.