

OMUKWETU

No 11

NOVEMBA

1964

EPANGULO LYA HUGUNINA

Joh. 5: 22-29

Ope noshikumitha Kalunga a to-kola meuthohenda lya Kalunga mUu-kwaaluhe a pangule uuyuni. Eyonano shô lye ya muuyuni kuu lwetike no-muuyuni u lwetike, nena epangulo e-yuuki olya pumbiwa tuu shili. Kalunga oku utha omulumentu omuyuu-kiikii Jesus oye a pangule uuyuni. Ye mwene oha longele kumwe na He. Oye omugandjimwenyo, Oye omupanguli guuntu auhe. Oye thithiya yomwenyo gwopambepo neshitululo. Oye awike ta vulu wo oku ukitha kondjila. Ota yumudha omwenyo kuusi wopambepo. Esiku otali ya uuna ta ka yumudha aasi mbaka yomwenyo gwomegulu. Oye omupanguli a tilika. Aantu yomuuyuni oya tilika, oshoka taa dhipaga olutu, ndele omwenyo kaye gu matha. Ihe nguka ota pendula omuntu nomontsi yeve e ta ti "galukeni one aana yaantu." Ombila neso otayi gandja "oasikisi" etayi eguluka yi gandje omuntu gwaantu. Ope na mboka taa dhiladhila Kalunga Oye omupanguli omukukutu ta galulile aantu uuwinayi wawo. Ihe Kalunga Oye omunamutimahenda. Omuntu oye mwene ti ike koshitayi sho ta tindi okwiitaala Jesus nEvangeli Lye.

Mboka ya Jesus oya yumuka meso lyopambepo noye nomwenyo gwomu Kalunga nena nokuli. Kaku na muntu ta vulu kutya: "Esiku ota li ya, mboka ya lala moombila taa uvu ewi Lye notaa zi mo-. Mboka ya longo uuwanawa okuyumukila omwenyo naamboka ya longo uuwinayi ya yumukile epangulo."

Esiku lyepangulo Kalunga oti igidhile aayengeli naantu epangulo Lye eyuuki lyoku ya mbonyonena megeelo lyaaluhe. Aayuuki mu Kristus otaa adhima ngetango omOshilongo sha Kalunga.

Tu kale koshipala sha Kalunga kuume, ee!

OSHEELO SHE EGULULWA MEGULU

Ehol. 4: 1

Oohapu ndhika otadhi popi oshiningwanima shi shi kudhimbulukiwa. Osheelo shika inashi egululwa komuntu, ihe oku Kalunga. Omweelo nguka ogwo ehanganitho pokati kegulu nevi. Uukwambepo itau kwatathana nonyama, onke tatu pumbwa ehanganano tali zi kombanda.

Momapsalmi tatu nwethwa mo twa fa tu li megulu nokuli. Ondjimo tayi ningi ompe sigo twa fa tu lwete omwenyo gwa Kalunga. Ohole tayi tu kwata etatu pongola kegumbo inaatu li lala nande ondjodhi.

Omweelo gwe eguluka mu pitile omagalikaneno nomahambeleso goitaali nesimano lyetu.

1. Omweelo gwe eguluka ogwa pe Johannes *uupoepi na Kalunga*. Johannes a li muuwike nosho epangelo ekwa Roma lya hepeke aakriste. Yamwe ya si aahokololambinzi, Johannes a tidhilwa ku Patmos, kontuntu yaayoni. Johannes okwa li a pongola shili. Ndika lya li esiku lyOmuwa. Ehol. 1: 10. Ota ti: "Ohaluka ndi niwe kOmbepo yOmuwa." Osho omuzizimba gwetu tagu tayiminwa kuuyelee we. Omuwa oku li popepi.

2. Omweelo gwe egululwa ogwa pe Johannes *emoniko lyuuyapuki wa Kalunga*. Otekisti otayi tameke. "Konima yaambika" nomweelo ogwe eguluka gwa landula iiningwanima ya popiwa momakapiteli ga tetekela. "Inima mbika," oye edhilile mo omagongalo gaheyali ga nyolelwa oontumwafo. Ogo oga li gaa nohole yotango. "Johannes te ga londodha." Oye i iholelelwa kOmuyapuki ngoka iha fudha manga omuntu ina nigululwa komwenyo ndongo olutu, a kale o opala "ongomufuko a zalekelwa omulumentu gwe," Ehol. 12: 2.

3. Omweelo gwe egululwa ogwa pe Johannes *emoniko kutya, eholamemeno oli li mu Kalunga*. Johannes okwa li muuwike mu Patmos, omagongalo taga vevelithwa kuupagani. O-



Onzigona awike ta vulu okumatula oramata

haluka mokwoondamena okwa mono momweelo oshipangelapundi noramata. A mono uumayesti wa Kalunga. Moramata omwa li omadhiladhilo gepangelo lya Kalunga ga holekwa. Onzigona awike ta vulu oku yi matula nota holola omadhiladhilo gomwenyo gwa Kalunga. Kalunga ta pangele apehe no ita vulu okupuka nant' odhilo. Ope nompito yokuya megulu, oshoka omweelo ogwe eguluka.

4. Omweelo gwe egululwa ogwa pe Johannes *emoniko lyokutala nawa sho shi li megulu*. Johannes okwa kutha otema ye ta ti: "Onda mono, onda tala, onda ligamene." Ethimbo kehe Johannes ta ti: Onda tala, onda mono, onda ligamene, onda keuka nethimbo kehe ta mono nota tala oshinima oshikwawo shi vulithe ponale montopolwa 4, a mono aakuluntu 24, montopolwa 5: 11; 7: 9, 10.

Egulu lye eguluka, otali ti ohole ya Kalunga kayi nehulilo oya aluhe. Otayi tu imbitha eimbilo epe. Omweelo gwe eguluka ogwo etameko lyeimbilo lyetu epe. J. Amakutuwa



Novemba 1964

UUKUMWE - OSHIYIMATI SHEITAALO

"Tate Omuyapuki, ya gamena medhina lyoye, we li pe ndje, opo YA ninge YAMWE, ngashi otse tu li," (Joh. 17: 11) na "AYEHE opo ya kale YAMWE," nishewe "opo YA ninge YAMWE YA GWANENENA," (Joh. 17: 21, 22). Oohapu adhihe ndhika dhi li megalikano lya Jesus. Tatu li luku "egalikano lyuusaseri uukuluntu." Jesus ta galikanene ngeyi aayapostoli ye noitaali ayehe.

Uuyuni wongashingeyi kau nuukumwe, ngashi tu shi shi nawa. Ehumokomeho tali popiwa, tali lalakane nwa notali monika nokuli apehe. Aandunge yomuuyuni mbuka taa tungu iikuti tayi vulu okwaadha omwedhi. Miikuti tamu tulwa omashina gokufaneka gogene, notaga faneke shoka shi li ko. Omuntu ta vulu okutala omafano ngoka nokudhimbulula mwene, omwedhi gwogwene gwa tya ngiini niinima ya tya ngiini yi li ko. Ihe nando ngeyi, oondunge tadhi koko miinima oyindji, ehanganano pokati kii-gwana niigwana, kaantu naantu tali yonuuka. Aantu haa longitha oondunge dhawo okwiithumitha komeho yoyene nokuyona po aakwawo. Etondathano tali kunwa maantu. Iita yi li aluhe pokuya.

Ihe Jesus ta ti: "YA KALE YAMWE" Elong ndika lya Jesus opo li li natango notali dhimbululwa maalanduli ye. Uukumwe mbuka tau tungilwa komukanka gweitaalo alike. Eitaalo ndyoka tali gama ishewe kehupitho ndyoka tu li na mombinzi ya Jesus Kristus ayike.

Sho nda mono ompito yokweenda-enda momagongalo, ogendji ngaa mu Soomi, onda dhimbulula uukumwe mpoka u thike. Oyendji ya longele Omumuwa omimvo omilongo nomilongo, unene ye mu longele meyakulo lyoshilonga shetumo. Aakulupe oyendji ya dhiginine oshilonga shawo momagalikaneno nomuugongi wawo okuhondjela nokugandjela etumo, nando yoyene inaa mona sha nomeho gawo gopalutu. Ihe ya mono iikumitha iinene nomeho gopambepo, ngashi gumwe gwomuyo okwa ti: "Oshikumitha oshinene okulongela mboka itatu ya mono nande kombanda yevi ndika, ihe tatu ke ya mona muukwaaluhe."

"OMUWA OKU LI MPAKA NOTE KU ITHANA"

Joh. 11: 28

Oshigongi shaagundjuka yongerki ayihe shoka sha gongala mu ELIM eti 1-4/10/64, omwa li aagundjuka ye vule 340. Omolwomagalikaneno gooitaali oshigongi osha mono omayambeko ga Kalunga. Edhina lyoshigongi oyo "OMUHONGI OKU LI MPAKA NOTE KU ITHANA." Eeno oshili, ewi lyOmuwa lya ithana omootundimbibeli nomoondjimbo nomomahokololo. Aagundjuka oyendji ya uvu ewi noya vulika ku lya.

Ethimbo lyoshigongi, omuyevangeliste gumwe naakadhona yaali ya vulika kewa lyOmuwa noya tokola oku ka kwatha momapya getumo. Mongalo yoshigongi omwi iumbile ishewe omumati gumwe, ngoka a tokola okukala omutumwa.

Aagundjuka moshigongi shawo oya eta wo iilonga yawo yiikaha. Iilonga yawo oya landithwa po nelalakano okumonena etumo iimaliwa. Mpaka tapu landula elandulathano lya shoka sha etwa komagongalo (aagundjuka) miitayingerki, osho wo omasindano pangerki nopaitayingerki.

OSHITAYINGERKI:

ONDONGA

1 Okaku	R 2.01 (esindani)
2 Oniipa	R 1.66
3 Onayena	R 1.53
4 Oshitayi	R 1.26 1/2
5 Eheke.....	R 0.31
6 Onyaanya.....	R 0.27
7 Omuntele	R 0.05
8 Ontananga	
9 Olukonda	

Kumwe.....R 7.09 1/2

OSHITAYINGERKI:

UUNINGININO

1 Elim.....	R 25.50 (esindani)
2 Tsandi.....	R 10.68 1/2
3 Okahao.....	R 9.38
4 Onangalo.....	R 8.98
5 Nakayale.....	R 7.36 1/2
6 Ogongo.....	R 7.30
7 Etilyasa.....	R 6.30
8 Oniimuandi.....	R 6.15 1/2
9 Onaanda.....	R 2.54

Kumwe....R 84.20 1/2

Aagundjuka ya tokola iimaliwa mbika yi tulwe moshikethatumo shongerki. Mongalo yoshigongi omwa zi R 6.10 ya yi moshiketha shaagundjuka yongerki. Omagongalo inaga nyolwa mo, ka ga li mo moshigongi.

Oshitayingerki sha KAVANGO inashi mona ompito okuthika omolwiiyenditho. Oshigongi she shi dhimbulukwa wo, nokupandula sho sha dhimbulula sha kala pamwe na sho pambepo.

Esimano lyaa ninge lyetu aawe, ihe olya Kalunga ketu.
K. Dumeni

Elago enene komuntu omulunde mbwa, tandi vulu oku shi gandja po. sho ta ZIMINWA ngeyi OKUKALE- Osho ye mwene ti itula moluhepo. KALA NOKULONGELA OMUWA. O- lunga OYE OMUGANDJI omunene, twa puka olwindji nayi, oshoka hatu ota yambeke aalongeli ye lwomilongo dhiladhila: shoka itashi talika kaantu, nolwomathele, oomboka taye mu gakashu noshilonga. Ondu uvite kutya, ndjele sha shomumbyoka iwanawa noshiponga shoka unene shi li maakwanegongalo oyendji, ngele taa tula sha moongalo nenge taa gandjele sha koshilonga shegongalo. Kalunga ta pewa Ongiini ano, sho inaatu sohoni oku ngaaka shoka sha hupu ko; iihupe yomiinima yetu. Omuntu ta dhiladhila konakona okambo "SHA KALUNGA" oshinima shika itandi shi pu-

Tala ep. 3

OSHITAYINGERKI:

UUKWANYAMA

1 Engela.....	R 12.64 (esindani)
2 Endola.....	R 9.19
3 Onguediva.....	R 0.79
4 Kongo.....	
5 Okatope.....	
6 Ohalushu.....	
7 Edundja.....	
8 Ongenga.....	
9 Okalongo.....	
10 Ondobe.....	
11 Olupandu.....	

Kumwe.....R 22.62

Egongalo li vule agehe: **Elim R25. 50.**

Evulathano paitayingerki:

Uuninginino	R 84.20 1/2
Uukwanyama	R 22.62
Ondonga	R 7.09 1/2

Kumwe...R113.92

UUKUMWE Etsikilo

SHI PENI KALUNGA". Mu Soomi yOwambokavango ya mono uuyamba ando inamu kala aadhiginini moshilonga sha Kalunga, andola oohapu dha Kalunga inadhi tumwa kombanda yomafuta. Ando inamu monika mboka taa gandjele etumo shoka oshiwana oshiwana welela, andola aakriste yomu Soomi inaa mona omayambeko omene ga zi ku Kalunga.

Omeho goyendji ya mono iikumitha iinene, sho ya tala iiyimati yiilonga yetumo. Aawambo yamwe sho ya mono ngaaka ompito okuya ko Soomi, oya ningi oonzapo koyendji kutya, oshilonga shawo inashi ninga osima. Oya tala noya gumu iiyimati mbyoka yoshilonga shetumo noyahambebele Kalunga. Nando oyo yomoshigwana shi ili nomelaka li ili nomezimo li ili nomoludhi lwi ili, yo ya ningi YAMWE MU JESUS KRISTUS. Oyo ya dhi mbulula uukumwe mbuka nAawambo mOmukulili etaye u dhiginine nawa.

Otse mbaka twa pewa evangeli lyehupitho, tu nelago ndyoka, tatu zimnwa okufala elaka etoye komeho. Inapu pita ethimbo ele, ongerki ndjika

Otu na tuu iiyimati mbyoka?

Omagongalo ogendji mOwambo nopalwe tagi ilongekidha okuninga "obazaari," elanditho molwoshilonga shetumo. Oto gandja shike ku Kalunga, opo ehambebele lyomwenyo gwoye li holokele koshipala she? Tu uvite tuu uukumwe na mboka ye li momilema dhuupagani, oyo aakwankala nenge ii-gwana yilwe?

Ehambelelo lyetu tali monika mii-longa. UUKUMWE wetu nooyakwetu tau monika MIIYIMATI YEITAAALO lyetu.



Ondjalulamasiku

1965

ya holoka. Endelela u yi ilandele! Otayi pula 7 1/2c, (oosente 7 1/2).

ETESTAMENTI LIPE lyOshikwanyama lye ya mostora yomambo. Otali landwa 35c. Endelela u li ilandele!



ELUNDULUKO MIIFO 1965

Ngele wa hala iifo iyali momwedhi kehe.

OMUKWETU

MOWAMBO	ngele to taamba	oshifo shimwe	momwedhi,	ondando yi li	35c.
"	"	iifo iyali	"	60c.	
KUUSHIMBA	"	oshifo shimwe	"	45c.	omolwostombe
"	"	iifo iyali	"	80c.	"

EHANGANO

MOWAMBO ondando yi li 15c. Ngele tatu mono aataambi yalyo oyendji.
 KUUSHIMBA " " 20c.

Endelela u ilandele Omukwetu gwoye manga ethimbo inali pwa po. Ngele to tokelwa to kanitha oshindji. Mbestela ano mbala, opo u pewe oshifo shoye petamekolela lyomumvo, ngoye mwene, omushiinda shoye negongalo lyoye.

YINA NGOMUPUTUDHI OMUWANAWA



Okanona sho ka valwa, yina oku na oshimpwiyu oshinene na ko. Yina ite ka etha, ote ka dhimbulukwa ethimbo alihe, manga ta longo iilonga ye yilwe, oshoka e shi shi kutya, okanona itaka vulu okwiikalela nando.

Ongiini kombinga yepatudho? Okanona ngele okashona ngeyi, oka fa itaka vulu okutaamba sha unene manga, ihe yina ta vulu okutaamba sha. Eeno, itaka vulu okulongwa sha unene manga, ihe yina ta vulu okusila omwenyo gwako oshimpwiyu pethimbo ndyoka wo. Ota vulu okugalikana omwana esiku nesiku. Yina ngoka e na oshimpwiyu shika, omwana a ninge omuna gwa Kalunga nomulongeli gwOmuwa, ota tameke okugalikana okanona ke nomanga inaka valwa. Osho ta sile oluvalo lwe oshimpwiyu nota longekidha eputudho lyomunona.

Yina ta tsikile oshilonga she shokugalikana oluvalo lwe omasiku ge agehe. Ita etha oshilonga shika nando. Ihe okanona sho ka koko kashona noka ningi oondunge, otaka longwa wo okugalikana. Otaka longwa okugalikana Jesus noku mu tsey.

Okanona otaka longwa okusimaneke aakuluntu nokuvulika ku Kalunga nokaantu. Aanona momagumbo gaapagani otaa longwa okusimaneke aakuluntu nokuvulika. Ihe meputudho ndyoka omu na iinima yaa shi iiwanawa. Oyo iidhila netilo lyokutila aathithi niinima yaa noshilonga.

Omunona omukriste e nokulongwa evuliko noye e nokwiilonga okusimaneke aakuluntu, oshoka Kalunga ta tegelele iinima mbika yi kale maakriste.

Omuputudhi omuwanawa e nokukondja shili, oyana yi ilonge kutya, Kalunga ta tegelele evuliko momuntu kehe, momunona omushona, momugundjuka nomomukuluntu. Otaa longwa oshipango oshitine "Simaneke ho na nyoko, opo u kale u nelago nomwenyo omule kombanda yevi."

Yina ta longo oyana okulonga iilonga yi ili noyi ili. Ota pumbwa uudhiginini neidhidhimiko shili, kaa ethele okanona ehala lya ko. Ayehe ye nokulongwa nokudheulwa. Ondi nepulo limwe kombinga yiilonga. Mokutala aagundjuka Aawambo, onda tameke okwiipula, ooyina nkene haa ningi moku ya putudha. Omunona oha pewa tuu oshilonga shimwe, e shi dhiginine esiku nesiku nenge aluhe ta lombwelwa ku yina: Longa shika nenge shiyaka? Onde shi igilile mevi lyaandjetu kutya, aanona otaa pewa iilonga ye noku yi dhiginina notayi ilongo ngeyi okuninga aantu ye shi kwiinekelwa. Omunona gwoomvula ntano, hamano nenge hetatu, oku na oshilonga she oshishona, ota vulu okudhimbwa oku shi longa, ihe yina te mu dhimbulutha nota soshimpwiyu, shi longwe shili sigo omunona i ilongo noita dhimbwa we. Ngele oku noomvula 15 nenge dhi vule po, ota vulu okwiinekelelwa iilonga oyindji nokuli. Omugundjuka a tya

ngeyi ngele ta dhimbwa iilonga ye aluhe, ohoni nokuli, ta talwa ina dheulwa nawa.

Yina e nokulonga oyana okupopya oshili. Omutondadhi oye ohe yifundja. Andola yina a tameke okuza petameko okuputudha oyana moshinima shika, yi ilonge okupopya oshili. Oye e nokulonga nokutonatela oluvalo lwe nawa, aanona naagundjuka ya dhimbulule oshili nkene yi nondilo mokukalamwenyo kwomukriste. Omutondadhi ota nyanyukilwa iifundja, ihe aana yuuyelele mboka taa tegelele ya yambekwe ku Kalunga Tate, ye nokupopya oshili.

Yina ta longo oyana okukalathana naantu. Ote ya longo okudhimbulula shoka yalwe taye shi pumbwa. Okukalathana kwaantu otaku ningi okutoye, ngele taku pangelwa kombepe yeyakalathano.

Otwa tumbula iinima yi ili noyi ili, aanona naagundjuka taye yi longwa kooyina. Ooyina ohaa longo ngiini? Mpaka otatu vulu okugandja eyamukulo lya tya ngeyi:

Yina ota longo oyana
-nohapu yomokana
-niilonga ye
-noshiholelwa she.

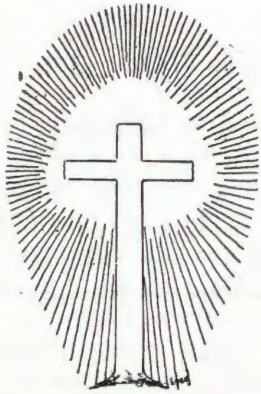
Olwindji ta longo oluvalo lwe noku ya fatululila iinima. Ote ya longo omikalo dhopakriste nokutseya iinima yi ili noyi ili. Ota longo ngeyi ta longitha elaka. Ihe ethimbo alihe ote ya longo, manga ta longo iilonga ye yesiku kehe. Oyana taye mu tala notaa tameke mbala okuholela omikalo dhe miilonga nomokukala akuhe. Mpaka yina e noku dhimbulukwa kutya, oshiholelwa she osho omukalo gumwe meputudho lye. Shoka te shi popi nohapu yomokana, itashi kwatha nawa, ngele okukala kwe mwene itaku tsu kumwe nomalongo nomalombwelo ge.

Eeno, oye mwene okwa fa e li meputudho wo, oshoka e nokutonata, a kale omuholelwa omuwanawa koluvalo lwe.

Lahja Lehtonen



OKAANDJETU



TATEKULU NIKONDO

KAARLO JALMARI PETÄJÄ

a valwa 26. 8. 1881

a mana oondjenda dhe 5. 10. 1964.

Oye okwa longo omimvo odhindji mOwambo:

1907 - 1923

1927 - 1935

1947 - 1953

Etumbulo ndika: "Hambeleleni Kristus" lya pangele okukalamwenyo kwe akuhe. Kristus tuu ngoka okwe mu ithanene meadhimo lye.

OVAFI MENDOLA

Selma	Hasiana	a fya	1.	2.	63
Albertna	Abraham		17.	3.	"
Mirjam	Hamunjela		6.	4.	"
Magdalena	Haukongo		2.	4.	"
Jonas	Abraham		25.	4.	"
Anna	Kamati		24.	4.	"
Sara	Haifete		17.	4.	"
Sara	Lukas		3.	5.	"
Paulus	Mashimba		6.	5.	"
Kristina	Timoteus		5.	6.	"
Haggai	Haufiku		3.	6.	"
Hilma	Viktor		3.	6.	"
Andreas	Kapija		22.	6.	"
Mirjam	Kamati		26.	6.	"
Emilia	Hamuaama		26.	6.	"
Isak	Nghatanga		4.	7.	"
Rebekka	Sheetekela		14.	7.	"
Sara	Halukolo		15.	7.	"
Salomo	Mutota		22.	7.	"
Mirjam	Kelina		17.	7.	"
Mateus	Kundu		12.	7.	"
Erastus	Vilbard		23.	8.	"
Ndateelela	Sheetekela		13.	8.	"
Ndamona	Nghitungumbala		20.	8.	"
Jason	David		27.	8.	"
Rosalia	Vilhelm		30.	8.	"
Fenni	Mumbala		10.	8.	"
Vilhelm	Haluendo		6.	9.	"
Jonatan	Haluendo		6.	9.	"
Festus	Haihambo		12.	9.	"
Hiskia	Shidute		21.	9.	"
Johanna	Hashime		21.	9.	"
Priskilla	Moses		28.	9.	"
Teopolina	Hambunda		1.	10.	"
Sakeus	Elieser		17.	10.	"
Helena	Shaanika		1.	12.	"
Viktoria	Hashidudi		5.	12.	"
Hofeni	Kristian		27.	12.	"

E TU TETEKELA

Omushamane Filippus Haihambo, Okatope, a hulifa oweenda waye meti - 20. 9 neudo.

Oudu ou a vela ounyenga okuhokolola. Okwa vela omido 12 oudu womaulu. Omido nhe a endela koshiti nomido henhatu okwa kala ashike momulele ta pendulwa nota angulwa. Oudu ou wa dipaa shili olutu lwaye. Oufiku aushe ota keme unene, ndele ina kendabala nande onekwafo la sha.

Oye a tambula nehafo ofikola oyo a pewa, ndele ina itavela okulongifa omiti ile oimbodi. Oha ti ashike ota teeleele ehalo la Kalunga li wanifwe.

Eitavelo lomumati wa Kalunga ou ola li la kolelela shili, inali tilifwa nande koudu ou. Alushe oku na Ombibeli meke laye. A kumaida aveshe ve mu talela po nokwe va pa omilongelo domOmbibeli. A tumina luhapu keongalo omakundilo eendjovo domwenyo nomaimbilo.

Okwa li yo omukulunhu weongalo fiyo oudu we mu imba okuhulifa oshilonga shaye palutu nande pambepo ine shi efa.

Okwa li omulongi munene peedula 1916 - 1920 mOliindili, pefimbo lomuhongi Hesekiel nokwa hongwa Ovawambo vahapu eendjovo da Kalunga nouidiinini.

Vahapu va shashifwa kuye nova ninga ovashikuli vOmukulili fiyo onena.

Onye ovahongwa vaye amushe, shiivifweni ngaha: Omuhongi weni ke ko vali, ota tulumukwa nombili mombila, oyo omutala waye. Pefyo laye opa li ouwa uhapu. Omatumbulo a huuinwa oo aa — "Oukadona nye va Jerusalem, inamu lila nge, li lilileni nye vene," na "Omwene Jesus wange, tambula omwenyo wange."

Oshinhwi sha hapuka, olupe likumwifa la holoka moshipala shaye. A fuda ashike kanini, ndele a unduka a ya momake ova-engeli moukwaalushe. Fye ava twe mu mona ohatu shi lineekele tuhe na omalimbililo. Ovanelao ava ve nomwenyo wa yela, otava ka tala Kalunga.

Ruut Haihambo



Lukas Lasarus, Otavi, ota hokolola oshiponga sha ningwa mOtavi, sho omumati gumwe Omuwambo a yahwa komuhona gwe nando ina ninga nando uuwinayi wa sha. Oshe ya ehameka shili koomwenyo.

Aatu Julius Nakanjala, Onguediva, ota hokolola eso lyombadhilila lya Mateus Andjamba. Oye a li mosikola mOnguediva nokwa adhika a yile kegumbo oku ka talela po aakuluntu ye. Mondjila oshihauto sha kandoma no ina penduka po we.

Mateus okwa yakula olwindji moshilonga shetumo mUuninginino na ngashingeyi a yi kekululuko lyaana ya Kalunga.

Muudhigu mbu notamu uvika, Megulu sho taa tang' Onzigona. Twa kumidhwa wo okusindana:

∴: Haleluya ∴:

Imbileni Omuwa 24: 5, 7.

DESEMBA

1. D. Mika 2:1,2,9,12,13. Jes.57:14-21.
2. W. 2Sam.7:4-9,11-14,16. Jes.58:1-11.
3. Do. Jes.64:1-3. Jes.59.
4. V. Hebr.10:19-25. Jes.60:1-11.
5. Sa. Ehol.22:12-14,16, 17,20,21. Jes.61.

6. S. oS. 2 yomwAdventi. Egongalo tali tegelele egaluko lyo Muwa. Hebr.10:35-39. Mark.1:14-15. Jes.49:8-10.

7. M. Luk.12:35-40. Jes.62.
8. D. 2Tess.3:1-5. Jes.63:7-19.
9. W. Ehol.2:1-5,7. Jes.64.
10. Do. Mark.13:5-13. Jes.65:1-12.
11. V. Luk.17:20-25. Jes.65:17-25.
12. Sa. Ehol.3:14-22. Jes.66:1,2,10-14.

13. S. oS. 3 yomwAdventi. Longekidhileni oMuwa ondjila. 2Petr.1:19-21. Mat.11:11-19. Jes.51:3-5.

14. M. Mat.11:11-15. Jes.66:15-24.
15. D. Mat.3:1-11. Luk.1:1-4.
16. W. Luk.3:10-20. Luk.1:5-17.
17. Do. Joh.1:6-9,15,16. Luk.1:18-25.
18. V. Joh.1:29-34. Luk.1:26-36.
19. Sa. Luk.7:29-35. Luk.1:39-45.

20. S. oS. 4 yomwAdventi. OMuwa oku li popepi. 1Joh.1:1-4. Joh.3:22-30. Jes.40:9-11.

21. M. Jes.45:1-8. Luk.1:46-56.
22. D. 1Kor.2:6-10. Luk.1:57-66.
23. W. Mark.3:31-35. Luk.1:67-80.
24. Do. Mika 5:1-4. Luk.2:1-7.

25. V. **ESIKU LYA KRISMESA.** Omwa valelwa oMukulili. Hebr.1:1-6. Joh.1:1-14. Jes.11:1-5.

26. Sa. **ESIKU 2 LYA KRISMESA.** Aahokololi ya Kristus. 1Petr.4:12-19. Mat.10:32-33,37-39. Jer.20:10-13.

27. S. oS. ya landula oKrisimesa. Egameno lyomuna gwa Kalunga. Ehol.14:1-3. Luk.12:32. Jes.8:9-13.

28. M. Ehol.12:1-6. Luk.2:25-35.
29. D. Joh.12:35-43. Luk.2:36-40.
30. W. Joh.12:44-50. Luk.3:1-14.
31. Do. Rom.8:31-39. Eps.121.



A A L O N G I M E P

AAEVANGELISTE AAPE YA YAPULILWA OSHILONGA SHAWO

Oshituthi oshinene moka aaevangeli-
ngeliste 41 ya yapulilwa oshilonga sha-
wo, sha ningwa esiku eti- 18 Okotoba
mEngela.

Ongerki onene yomEngela ya li yo
opalekwa niyale noongala nookiinteli,
ihe eopalo lyalyo li vule omaopalo o-
makwawo, oyo egongalo enene lyu
udhitha ongerki sigo oyendji inaa gwa-
nena mo nando. Ihe ayehe ya wapa
okupulakena nawa ashihe shoka sha
popiwa, oshoka ewi kolekwa nomba-
ko. Manga egongalo lya thikama no-
lya imbi eimbilo 389, aayapulwa naa-
yapuli yawo ye ya mongerki noya piti
momweelo omunene noyu uka koaltari.
Moaltari twa mono omubisofi L. A-
u ala pokati naasitagongalo omulo-
ngo: A. Eirola, T. Pentikäinen,
I. Nhinda, J. Amakutuwa, E.
Hynönen, V. Simojoki, T.
Shipanga N. Shinana, M. Ngi-
pandulua na S. Ndatipo.

Omubisofi okwa popitha tango
aayapulwa noohapu dha Joh. 21:15-17.
Oye a ti ngeyi: "Omuwa konakonwa
nomwa yamukula omapulo nomwa pi-
ta. Aakonakoni yeni ye mu zimina.
Ihe Jesus Kristus te mu konakona po-
Altari mpaka nomapulo gatatu: 'Simon
ya Johannes, u hole ndje tuu?'- Jesus
e holike ku Kalunga. Omulongwa e
holike ku Jesus. Oto pewa oshilonga
ku Jesus. Tango tango to pulwa ohole.
Ohole ya Kristus tayi tu thiminike. O-
hole ye onene noya hwama. Otatu pu
lwa ohole okuhola Jesus naamwameme.
Jesus mwene ta yeleke ohole yoye. O-
nkee ano ta pula: 'U hole ndje tuu?'
na 'Litha oonzi dhandje.'"

Nena okwa tumbulwa omadhina
gaevangeliste nomahala gawo okulo-
nga (shoka to shi mono pehala li ili
moshifo shika.) Oya topolwa ngeyi
moongundu:

1) Miilonga 25

2) Metumo 10

3) Mosikola 6

Konima yomadhina gawo aasita-
gongalo ye ya tumbulile ooverse dho-
mOmbimbeli:

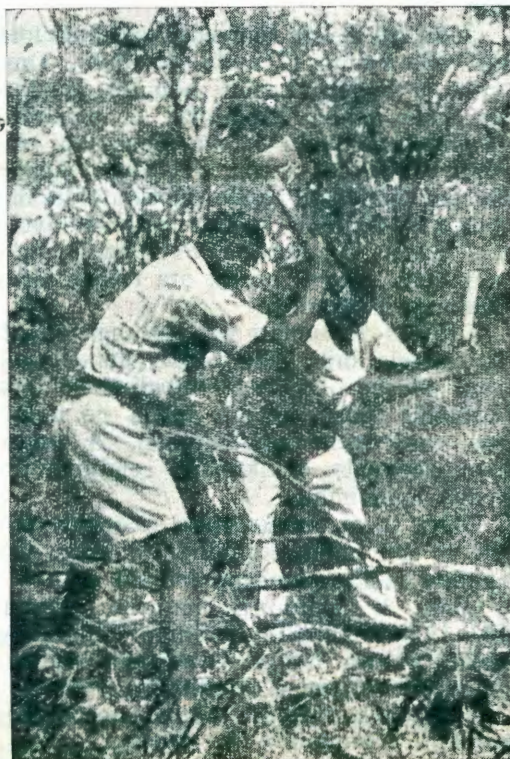
Ef. 6: 13-17; Jes. 40: 29-31;

1 Petr. 3:13-17; 1Tim. 6:11, 12;

Fil. 4: 4, 5; Luk. 9: 1, 2; Mark.

16: 15, 16; Joh. 4: 35b.

Aaevangeli-
ste sho ya hempulula
eitaalo lyawo noya pulwa omapulo ga-
tatu: okudhiginina oohapu dha [Kalu-



nga noshilonga shawo nokuuvitha Je-
sus Kristus, omubisofi okwe ya pe
oshilonga.

Aadiakonissalongwa ye ya imbile
mewiliko lyomulongi gwawo Laina Aho
eimbilo: "Omusita gwandj' Omuwa,
ota litha ndje..." (Ps.23.)

Oliturgia ya ningwa kaasitagonga-
lo Natanael Shinana na Simson Nda-
tipi. Aakagumbo naalongwa yosikola
yaamati yi imbi mewiliko lyomulongi
Toivo Ndevaetela. Ehuku lyeimbilo
lyawo: "Oompadhi dhaamboka haa u-
vitha elaka etoye, odho opala ngiini."

Omusamane Erkki Hynönen a ho-
lola oteksti yeuvitho lye 2 Kor. 13: 5.
"Ongerki ndjika yOwambokavango ya
pewa pethimbo lyehistori lyayo omasi-
ku omawanawa giituthi ngashi wo ne-
na, oshoka aaevangeli-
ste mbaka 41
ya hala okulongela Kristus. Ongerki
ya fa yi nomwenyo. Oohapu ndhika ta-
dhi opalele tuu esiku lya tya ngeyi?

Eeno, otadhi li opalele naanaa. Omba-
ka nando ya hempulula eitaalo lyawo,
otaa lombwelwa ngashi na tse wo tatu
lombwelwa: Iyelekeni, ipulapuleni! O-
ndi itaale tuu, Jesus Kristus Oye O-
muwa gwandje? Ondi itaale tuu, Ka-
lunga mu Jesus Kristus e hole ndje?
Ondi itaale tuu, mombinzi ya Jesus
Kristus ndi nedhimopo lyoondjo no-
nda ningi omushitwa omupe mu ye?
Ondi itaale tuu, Jesus Kristus Oye O-

mukwaniilwa ta hanagula po iilonga a-
yihe yomutondi? --- Mu Jesus Kri-
stus omu neshito epe kOwambo, ku
Afrika noku Europa nokiigwana ayihe.
Eitaalo lyetu tali monika nenyanyu
nomehambelelo. Enyanyu tuu okukala
moshilonga she? Enyanyu omolwaa-
lumentu mbaka ya yapulilwa oshilonga
shawo. Otwa hala okulongela Omuwa.
Otu na enyanyu omolwuukumwe kau
shi kufatululwa nawa, uukumwe mu
Jesus Kristus, ongoka e tu hupitha.-
Aalumentu mbaka oyo aapeha yetu
okuya kaapagani. Twa hala oku ya
galikanena noku ya yakula kombinga
yokolutu nokuli, ya wape okugwani-
tha oshilonga shawo."

Medhina lyaaevangeliste ape Lot
Hambia nokwa ningi wo euvitho (Mat.
16: 1-4). "Otu na tuu eitaalo lyokwi-
taala Jesus, nenge twa hala omandhindi-
liki? Aanelago omboka taa itaale, na-
ndo itaa mono. Tu na tuu eitaalo lya
tya ngaaka? Jesus ta zi po pu tse, nge-
le itatu mu itaale."

Ongundu yoshipangelo ya hambe-
lele Kalunga neimbilo lyayo.

Omakundo gamwe ga etwa nata-
ngo, ngashi: Simson Ndatipo: "Iilya
oyo oyindji, ihe aateyi aashona." Na-
tatekulu Simson Shituaa a holola enya-
nyu lye sho a mono oonkondo okuya
koshituthi shi thike mpo.

Pethimbo lyefudho ayehe ya palu-
thwa nawa kolutu noya shuna mbala
nokunyanyukwa mongerki.

Oshigongi shopomutenya sha ta-
mekwa komusita Ismael Nhinda: "Mu-
yuni mbuka omu niiponga ayindji. O-
shiponga oshinene shi vule iiponga
ayihe, osho omutondi gwetu Satana,
oye a hala oku tu kutha mu Kristus.
One mboka mwa taamba oshilonga,
mu li mekondjo. Ihe kape ngoka ta vulu
oku mu etela oshiponga, ngele mu li
mu Kristus."

Omukuluntutumwa Eirola okwa e-
ta ekundo lya shangwa komuevangeli-
ste Lasarus Katoma peha lyaaevange-
liste mboka taa longo mu Venduka.
Nishewe a ti: "Omuksiita ta zalekwa
iikondjitho yOmwene gwe noyomutumi
gwe. Aatetekeli yeni naatumwa oyendji
mu Soomi taye mu galikanene. Oshi-
longa sheni shi noombinga ndatu:

1) Okuuvitha

2) okulonga

3) okuhunga oomwenyo.

Y A L Y O M U W A

AAEVANGELISTE AAPE YA LANGEKWA NGEYI:

Shi gwanitheni koombinga adhihe medhina lya Jesus." Laina Aho: "Otu li peni? Otu li tuu meitaalo lya kola? Otu li tuu mu Kristus? Onda nyanukilwa omapulo ngaka. Ongoka ita pula sha, kee nomwenyo. Ongerki ndjoka kayi nomapulo, oya sa. Otwa nyanukilwa oma pulo gaalongwa yetu manga ya li mosikola. Oyendji ya mono o-mayamukulo. Puleni natango, puleni aluhe, opo mu kale mu nomwenyo."

Jason Amakutuwa, Joh. 21: 22. "Landula ndje! Aalongwa 12 ya ithanwa. Yamwe ya longo ethimbo ele, yamwe efupi. Tu kaleni aluhe nelaka ndika: itatu faathana methimbo nomuilonga. Tu ihule po ashihe tashi tu thindi pohi."

Omukuluntu gwenongelo Toivo Pentikäinen:

"Omwa konakonwa, sho mwa taa mbwa menongelo. Oyendji ya hala okuya mo. Otandi mu dhimbulukwa nawa. Onda dhimbulula ehwamo mu ne, sho mwa hala okwiilonga nokulonga iilonga yi ili noyi ili. Tsikileni ano ngaaka. Inamu suunye." Oye okwe ya topolele oonzapo dhawo, moka mwa holoka oonomeri miilongwa 28.

Omubisofi na amushanga gwe Matias Ngipandulua ya gandja oonzapo dhokuya moshilonga ku yo.

Opwa landula natango omakundo gamwe, ngashi: otelegrama ya zi kaasitalongwa kOtjimbingwe (Joh. 15: 16,) Moses Mundjele a pandula aalongi, Nikodemus Ngula aapangi naayakuli moshipangelo, Silas Shalanda aasita-gongalo naakwanegongalo lyokEngela omolwomayakulo gawo agehe. Omusitagongalo Natanael Shinana okwe ya kundu neuvitho lya li li nehuku: "Uvitheni Jesus Kristus." Medhina lyE-pangelongerki omulongi Josef Amakali okwe ya popitha noku ya tsa omukumo moshilonga sha Kalunga (Jes. 6: 7b - 8). Tatekulu Abraham Nepembe a pandula aaevangeliiste peha lyaanashilonga aakulupe naakwanegongalo, nkene ya pewa oshindji momayakulo gi ili nogi ili kaalumentu mboka.

Omubisofi okwa hulitha oshituthi shika oshiwana nokwa dhimbulukwa unene tatekulu Niinkondo (Petäjä), ongoka a longo ethimbo ele mOwambo nokulikolela Kalunga oomwenyo odhindji mevi ndika lyAawambo. Osho wo oye okwa eta omakundo e ga pewa molweendo lwe mu Europa koongerki dhi ili nodhi ili. "Atuheni tu li kumwe mu Kristus."

Festus Hafunda a langekwa megongalo	lyOndobe,
Kristian Shipunda	lyOmundaungilo,
Simon Hangula	lyEenhana, moshipangelo,
Paulus Shihepo	lyEenhana,
Moses Mundjele	lyEdundja,
Jason Hamukuaja	lyEngela,
Andreas Mungungu	lyEngela, moshipangelo,
Likius Neumbo	lyEndola,
Linus Natangue Shanghilifa	lyEndola,
Paulus Hamunjela	lyOngenga,
Silas Shalanda	lyOkalongo,
Filippus Mbangula	lyOhalushu,
Elieser Lomboleni	lyoNkongo,
Väinö Nepembe	lyOkankolo,
Ismael Iipito	lyOshitayi,
Elifas Kaukolua	lyOshigambo, kOshaango,
Petrus Nande	lyOshigambo, kOnambutu,
Nikodemus Ngula	lyOnayena,
Leopold Mateus	lyOkaku,
Petrus Eelu	lyElim,
Jason Nangombe	lyElim,
Tobias Shikongo	lyOgongo,
Gideon Iingo	lyOnaanda,
Erasmus Uupindi	lyOkahao,
Simon Nambili	lyOkahao, moshipangelo,
Johannes Muatange	lyoTshandi,
Jonas Shikulja	lyOnesi, kOmindamba,
Petrus Kaindume	metumo pokati ka Nkongo nOmundaungilo,
Frans Dayid	metumo ku Nkongo,
Edward Ngimuena	ku Nkongo,
Teodor Nghipangelua	ku Nkongo,
Mateus Shikongo	kOkavango, Kuring-Kuru,
Toivo Muonde	maapagani,
Wilhelm Haikali	maapagani,
Petrus Haunini	maapagani,
Johannes Hamulungu ta tsikile osikola ye,	
Immanuel Mungungu	
Petrus Hamunjela	
Lot Hambia	
Benjamin Shuuveni	
Filemon Alugongo	
Pwa tokolwa, aaevangeliiste aape ya tameke iilonga yawo esiku lyotango lya Desemba 1964.	



OSHIKOLOLO SHAAGUNDJUKA

PETHIMBO NDIYAKA

Komatango oya adha ko nga evi lya kukuta kashona, mpoka iihwa ya holoka wo. Opo mpoka kehe ngoka a vululukwa nokwa kukutike oonguwo dhe. Oongombe dha monika nongundu ayihe ya gongala. Nokwiindila egameno neyambeko lyOmuwa ya lala ishewe mokuti.

Sho kwa shi, ongundu ya tsikile ondjila yayo. Iihwa ya kana, okuti kwa tameke. Omuhingi okwa tseyo okuhokolola kutya, mokuti nkoka omu na oombila mbali dhaatumwa, yefolo Roiha noyomuhongi Veikkolin, oshoka omukwaniilwa gu' Uukwambi ina pitika, ya fumvikwe moshilongo. --- Sho ye ende komeho, ondjila ya kana nongundu ya pukile mokuti, osho ya li ye nokulala uusiku uutitatu mondjila. Uusiku mbo-ka ya lala mokati kokuti.

Ihe sho ya thiki esiku lya landula kOndonga, oya thiki tango kOlukonda. Efolo Rautanen shokwa uvu uudhigu ye u mono mondjila, okwa haluka moku dhimbulukwa omalweendo ge omadhigu neso lyomuhongi Veikkolin ngoka a sile mondjila ndjoka - "Aakwetu, otamu vulu shili okupandula Kalunga, shokwe mu gamene, mwaa sile mondjila ndjoka."

Petameko lya Auguste Hänninen a mono ompito okuya kUukwanyama, komuhongi Wellsch, ongoka a li omutumwa gwa hugunina gwaAandowishi nokwa longo mevi lyAaputu. August Hänninen ina tseyo natango kutya, ota ka longa ethimbo ele moshilongo shiyaka shUukwanyama.

Molweendo ndoka a li e nothina Oshiwambo pawiliko lyomulongi ngonene momwenyo gwe. Oye mwene ka.

ota ti ngeyi: "Molweendo ndoka ondu uvite kutya, Omuwa e etha ndje nokuli. Omutondi a lombwele ndje ndi ethe egalikano, itali kwatha sha. Ihe ngoye, Omuwa, hedha ku ngame nesilohenda lyoye. Ino etha ndje nando esiku limwe."

Pehulilo lya Okotoba ooSavola oya zi kOwambo. Egongalo lyokOniipa lyu uvit'uudhigu okulaleka omuhongi gwalyo. Osho August wo u uvit'uuthigwa. Ihe mwaayihe a gama kOmuwa.

"Ongoye Tate omuholike, u shi shi, ashihe shika tashi kwatha shike. Ongoye mwene oto tu enditha eto utha iinima ayihe yi longele esimano lyedhina lyoye."

August okwa thindikile ooSavola sigo okombuga.

OMAVU

Pethimbo ndiyaka, August shokwa galukile kOniipa, okwa nyola ngaaka membo lye: "Omasiku omadhigu ga tegelele ndje, sho nde ya kOniipa, ihe Kalunga kandje ta kwatha ndje nokomeho wo nota gandja ombili ye momwenyo gwandje. Eputudho lyoye, Omuwa gwandje, olyo olwindji eputudho edhigu, ihe tali hulile esiku limwe muuwanawa, oshoka esilohenda lyoye itali hulu po nando."

August a li kee nomukumo. Omumvo 1906 a tameke okutalela po Oshigambo olwindji, "kOmukuyu gwemanya enene." Olwindji a kala omasiku nokuli huyaka nokwa lala mokandunda okashona, ka tungwa komulongi Omuwambo. August okwi ilongo

Mu Apilili August shokwa li kegumbo lye kOniipa, okwa kwatwa kolwiidhi noonkondo. Olwo lwe mu hepeke omasiku gane. Konima yomasiku omulongo olwiidhi lwe mu galukile ishewe. Osho August a kala sigo ku Septemba ngaaka, omasiku gamwe a li po ngaa hwepo, omasiku omakwawo a hepekwa kolwiidhi. Oonkondo dhe dha ningi oonshona.

Tatekulu Nakambale okwe mu fala pamwe na ye kUukwambi, oshoka a dhiladhila, okuya palwe taku mu kwatha ngaa, oshoka omiti dha fa dha kanitha oonkondo dhoku mu kwatha. Ihe olweendo ndoka lwa li po inalukwatha sha.

Omusamane Forsberg a li po wo kee li nawa noonkondo dhe dha shonopala esiku nesiku. Omolwa sho oye a li e nokushuna koSoomi. Tatekulu Nakambale a tumu August e mu thindikile ko sigo kefuta, nando oye oku uvite kee noonkondo okuya kolweendo lu thike mpoka.

Mu Karbib August a nyolele membo lye: "-esiku 24 mu Okotoba. Onda menekele muka mu Karibib, opo ndi aluke, nosho wo ndi tegelele omusamane Welsch, ndi shune pamwe na ye kOwambo, oshoka ndi noongombe dhimwe adhike, nosho wo Welsch e na.- Ando Kalunga a aludhe ndje!"

Okushuna kOwambo okwo okudhigu wo. Esiku eti-28 lya Novemba oya thiki nawa kOlukonda. August a li ko a aluka. Tatekulu Nakambale okwa ningi nawa shokwe mu thiminikile kolweendo nduyaka.

Taku tsikilwa.

ONANDJOKUE OPLEIDINGSKOOL VIR HULPVERPLEEGSTERS ONGANDJERA OPLEIDINGSKOOL ONGUEDIVA OPLEIDINGSKOOL OSHIGAMBO HOËRSKOOL

otadhi taamba aalongwa aape omumvo tagu ya.

Omakonakono gokukonakona mboka ya hala okutaambelwa mooskola ndhika, otaga ningwa mOmandaha eti-25 lya Januari 1965 ponti-9 yongula pomahala ngaka agehe gane oshita. Ekonakono otali ningwa mOshiafrikaansa, mOshiingilisa, mOshindonga nomomwaalu.

Mboka ayehe ya longwa sigo ostanda ontihamano, noya nyola ekonakono lyostanda ontihamano, taa vulu okutaambwa.

Kehe gumwe e nokuya noombapila mbali: 1) eindilo lyokutaambwa lya nyolwa ku ye mwene 2) nombapila yEgongalo.



Omutima womunhu

YAKWETU!

Okambo ingha otwe ke mu shangela, mu kale mu shi shii ope na yaali haya kondjele eemwenyo veni. Jesus ota ti: "Aashi kwafa shi omunhu ngehe ta likola ouuni auhe ndele ta kanifa omwenyo wae! Mat. 16: 26. Eeno omwenyo womunhu oshinima oshinene shi vule ouuni auhe. Jesus okwe ku halela. Satana okwe ku hala wo unene. Nande oyanhu oye itula moupika wa Satana. Jesus okwe ya kulila mo nokusa kwaye, oshonyi okwa li e ya hole uneene a hala ayehe ye mu itaele, ya ninge oyanhu yaye. Inhyi Satana ine shi panda nande. Oshoosho Jesus na Satana ohaya kondjele omwenyo woye. Ekondjo indi ooye ou li wete mokambo ingha. Ka lesa, ka tala nawanawa!

Ipula: Olye ngo ha pangele momutima wange? Ipula: Olye ingo to landula? - Ipula! oto i peni nga to zi mo mouuni mu. Ndele Kalunga, nOmona waye Jesus Omukulili woye nOmhepo yaye Ondjapuki oya hala ye ku kwafe, ye ku long' eendunge va za kombada, ye ku pe eenghono u tye: Ame neumbo lyange alihe otwa hala okulandula Jesus noku mu kalela oyeeye auke!

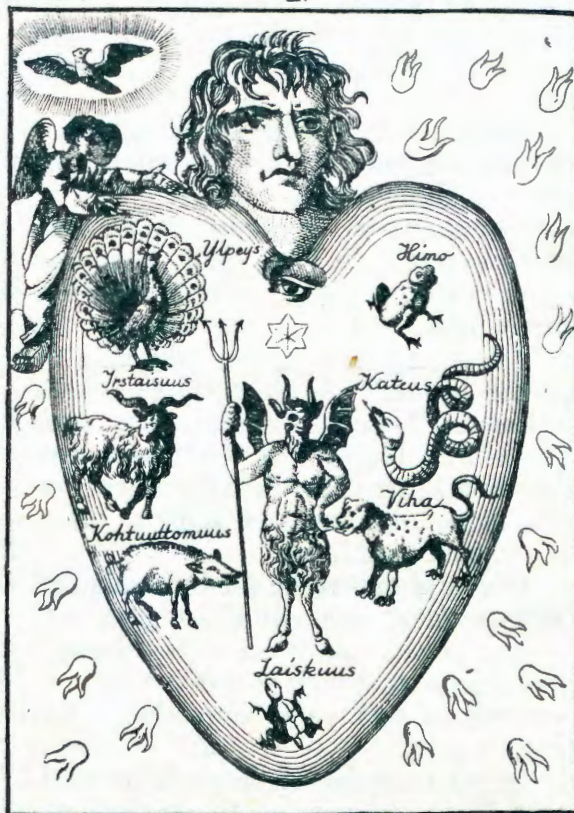
EFANO LYOTETE

Olyo otali tu ulukile omutima womunhu ingu iha tala Kalunga nde ta pangelwa ku Satana. Inhyi to tala nawa oshipala shaye, ooye u shi wete, ingu ke na nghwaa na Kalunga. Momutima womunhu ngu ohamu pangelwa ku Satana pamwe neyapiya yaye ya heyali.

Oyapiya imba oya tya ngeepi? Natu tale nawa efano indi. Autango ooye ou wete ovila oiwa in' omenya omawa, ovila ndji i vule eevila avihe oukengeli. Ngehe tai endaeda, oya fa ya hala oku tu pula: Mumbwete tuu? Ndi muwa uneene! Ka pe na umwe e fike pwaame, e vule nge oukengeli!

Tala ovila indji ohai yeleke ombiko inya yokutumbalala nokufulakata omunhu ngehe te itumbu nokuvina yakwaa nokwivilavila: Aame omunhu omuwa, ndi muyuuki ndi vule aehe kape na nand' oumwe e fike pwaame! Oyanhu aehe ondi ya vule eengombe noimuna; oshoosho ndi ya vule oukengeli; ame endengu-leela!

Omunhu ngu tei ivilavila ngo-



ganhyi, okwa vibwa nokutya, Kalunga oyeeye e mu pa oinima yaye e i na. - Eeno, ashihe omunhu e shi na, nganhyi olutu nomwenyo, eumbo nepya nemona lyaye alihe. Kalunga Omwene weulu nowevu e shi mu pa. Oyeeye ngu ha pitifile oyanhu ye nomikalo omiwa noyalunde wo etango lyaye, ndele ta loki-file ovula yaye oyayuuki na mba ka ye fi oyayuuki.

Eeno, ooye ingu to lesa eendaka ivi ino itumbaleka, ngovila inya u tye: Mumbwete imha ndi fike? Ino shi vibwa, inhyi Jesus ta ti: "Ingu te inomo te isingi, ota ninipikwa: Ndele nuno ingu te ihupipike, ota nenepekwa. Mat. 23: 12.

Oshikombo oshihepepe, inhyi u wete mefano ndi otashi yeleke omunhu ombwada e hole oipala e nomutima imo hamu kala omavilongo (ecnduge) ovii.

Oshingulu shi li mefano indi otashi yeleke omulumbunhu nongholwe. Epunda lyaye olyoolyo mno Kalunga kaye.

Onghili yomefano indi indji kai shii okweendelela otai yeleke ounye. Eeno, ope noyanhu oyendji kaye hole okweendelela nokutondoka, kaa hole okulonga nokukondja, ndele nuno oye hole okunangala nokuko-felela, oya tafa ya ota.

Oyanhu ye li ngoganhyi oya fa onghili ndji, inaa hala okulonga nokukala nganhyi u nokulonga nokukondja.

Mefano ndi ou wete wo efuma. Otu shi shii omafuma ohaa zi mevuu. Oshoo efuma lyomefano indi, ohali yeleke oyanhu oyakwavu. Evu indi, u tyai ouuni imbu noinima yao oyo aike haye i kongo. Oshonhyi oshihho shimwe ashike ye shi na osho: Aatu li shi, aatu nu shi, aatu zala shi?

Eyoka indi li li mefano otali tu vibulukifa eyoka linya Satana, ndyo lya hekeleka ndele tali pukifa Eva moParadisa, oshonhyi ina hala, oyanhu mba yotete ya kale ye nombaba (elaa). Ali eyoka lya mefano indi tali yeleke omikalo vomunhu ingu ina hala, ke hole nande omukwaa ngehe e li nawa ke noiponga (oimomolo).

Ongwe indji ooye ou i wete wo, oyooyo oshifitukuti sha hanya shi hole okunyanyaula nokuvipaa. Oyo hai yeleke ohanyo nombiko inya yomunhu, inhyi a kwatela mukwaa onghone (onghehwe). Vibuluka hano eendaka ivi: "Ondjahi yomunhu ihai longo sha sha opala koshipala sha Kalunga. Jak. 1: 20.

Enghwaa: Inamu efa etango liningine mu nondjahi yeni. Ef. 4: 26 tashi ti: Inamu ka nangala mu nomutima wa uva ondjahi.

Onghuti indji mu wete otai yeleke Omhepo Ondjapuki ya Kalunga. Nhaakwashi ota kondjo okuminikila omutima mbu nouyelele hau zi kombanda. Ndele mno omutima imbu, nhyi wa uva oulunde, owa nyengwa okweela. Kehe lya ka shile Omhepo Ondjapuki ta kongo ondjila okuuya momutima mbu ndele ite i mono.

Nomweengeli womefano ndi tashi ti oye omutumwa wa Kalunga, ote tu lombwele: Omunhu ingu nande ota kala ngoganhyi ke nonghwaa na Kalunga, omweengeli ine mu efa natango. Omasiku aehe ota kongo oku mu pendula nokulonga eenduge: ote mu lamba nganhyi omusita omuwa ta landula oshimuna shae sha kana.

Ndele nuno omunhu ngu nganhyi tu mu wete, okwa fa ina hala okuuya ko nokwivilululo (evilululo) nokuning' eenduge. Ota landula ondjila ndji, imo e li, siyololo esiku limwe tai mu twala ku ngu a longela, Satana! Oshonyi u wete Satana mokati komutima, ota pangele mo nganhyi ohamba tai pangele moshilongo shayo.

ONGUDI YOUPAANI

- “Ongulu oyo oinene i dule eenduda edi deni adishe kumwe, nande mefano la fa linini li fike opo.” —
- “Omunhu ota piti peni, eshi ota i meni? Opo tuu mbela?” —Namaria ta pula nokuyola nota ulikile o-kanima kanini taka monika kombada yongulu (oluungu).
- “Ahowe, oshivelo oshi li apa. Osho otashi yeululwa nde omunhu ta i mo ta ende omutwe wa yeluka ita pumbwa okulikoka.” —
- “Hamba, omunhu ta i mo ita pumbwa okulikoka,” —Nekulu ta kumwa.
- “Otashi dulika ngahelipi kutya, ongulu oyo inene ho i tula mefano linini tali wana mondjato yoye?” —Shiimi ta kumwa.
- “Ovatilyane venya ove shi kufaneka eengulu novanhu. Ondi na natango omafano makwao.” —
- Oye a kufa mondjato yaye efano omo mwa li ovahongi vahapu novakulukadi vavo. Ndelene efano olo ve li tila okutala. Ombadilila Shiimi ta ehene kokule nomweenda, ta lombwèle nouladi ovanhu vaye ta ti: “Inamu tala efano olo, ohai mu indike, inamu tala.” —
- Ovakainhu va dja po nokuendelela nova hovela okulipyakidila nounona vavo.
- “Ovakwetu nye, inamu tila. Apa kape na oulodi washa. Onda kundana kutya, ope na vamwe hava tila okutala efano eli, osheshi hava diladila kutya, mefano eli mu neenghono tadi shili omunhu kovalongi ovatilyane. Vamwe hava ti kutya, tashi dulika nokuli omutilyane ye mwene mwene ta holokele omunhu ou ta tale efano eli. Ndelene oinima i li ngaha itai ka ningwa, kaleni mu shi shii, itai ka ningwa shili. Ndelene, oshi dule, ngenge hai tula omafano aa mondjato yange nde natu kundafaneni oinima imwe i lili. Taleni, ngeno omafano aa a nyanekelwa, ngeno inandi a tula mondjato yange.” —
- “Hm, venya ve ku nyanekela nale,” —Shiimi ta tongo.
- “Elaka lavo oho li udu ngahelipi?” —Nekulu ta pula nokutala omweenda nokatalekonawa.
- “Ovo tava popi elaka lOvandongang.” —
- “Otava popi tuu elaka lOvandongang?” —aveshe va kumwa.
- “Venya ove lilonga peni?” —Nekulu ta pula.
- “Shamha tuu va fiki kedu letu, otava hovele okulilonga elaka letu. Otave tu longo nelaka letu.” —
- “Elaka letu lOvakwaluudi ove li shi tuu?” —Nekulu ta pula.
- “Ahowe, kave li shii, osheshi inave li lihonga. Noshilongo sheni kave shi shii.” —
- “Ngeno itave ke shi shiiva nokomesho, ngeno onawa,” —Shiimi ta tongo nokuholola etilo.
- “Ovo kave fi eendudu, nOvandongang ihave va tila vali. Ovo ookaume vava kohamba nokovanhu aveshe vomouhamba.” —
- “Omuhongi e li ngaha nda hala oku mu mona,” —Namaria ta ingida noupenda. Ndelene eshi a mona, nhu-mbi Shiimi te mu tale nehandu, oye a twikila ta ti: “Inandi hala okuya popipi naye, oku mu tala ashike kokule, konima yoshihwa.” —
- “Otava kongo shike medu lovalaule? Oshike itava kala, moshilongo shavo —ngenge ve na oshilongo shavo,” —Shiimi ta tongo nokudina.
- “Ovo ve uya ve tu hepaululile Kalunga neulu.” —
- “Hamba, ohave tu hepaululile oinima i li ngaha, nande otu shi shii nale nokuli kutya, Kalunga opo e li, oku li koshi yedu noko ku na yo oshilongo shinene sheemhepo,” —Shiimi osho a ti.
- “Kalunga katu mu shii nawa.” —
- “Oilumbu inya otai mu popi shike ngeno?” —Shiimi ta pula.
- “Otava ti: Kalunga oku li meulu kombada, ha koshi yedu. Oye a shita eulu nedu noinima aishe i li mo.” —
- “Oomeekulu vetu vonale ova li ve shi shii nokuli,” —Shiimi a ingida nokudina.
- “Kalunga oye ta pangele aishe nota file oshisho oshitwa yaye.” —
- “Ote i file oshisho ngahelipi?” —Nekulu ta pula.
- “Kalunga te tu lokifile odula pahalo laye liwa, omwiidi tau kulu, omiti noihwa tai mono omafo mape, oilya tai mene notai kulu momapya, osheshi Kalunga te i file oshisho.” —
- “Ndelene, ngenge Kalunga a kwatwa kouhefi, nena odula itai loko, oilya otai fi nafye ohatu kala nondjala. Olyelye te tu file oshisho momafimbo e li ngaha?” —Nekulu ta pula.
- “Nena eendudu di nokunyanekela unene na luhapu odo yo tadi nyengwa,” Nauyoma ta ti.
- “Nande wa tula oushosho wondjaba mombuto nawo kau nekwafo,” —Nangula ta ti.
- “Otau kwafa, ngenge odula tai di-nine. Oihati tai ka ninga ile noya kola nawa,” —Nekulu ta ti.
- “Nomitwe dinene di fike pomushila wongwe! Shi dule to ka palula epya
- loye noushosho wondjaba modula tai uya,” —Namaria ta popi noudano.
- “Nye otamu lineekele okunyanekela, oushosho wondjaba nomakipa ayo notamu lineekele eendudu odo hadi ningi odula, ndelene otamu diladila ngahelipi, omunhu wongaho a dule ngahelipi okweeta oilemo ya tilika, tamu di eembadi notai ndunduma. Omunhu ita dulu, oinima i fike opo otai di ku Kalunga. Otu nokweefa okunyanekela akushe nokwiilikana Kalunga e tu tumine odula notetu udu.” —
- “Ote tu pe nani? KOndonga otaku lokwa tuu unene?” —Siimi ta pula nokudina.
- “Oku ku novakriste vamwe vamwe aveke novapaani vahapu. Kalunga a hala aveshe ve lidululule nova ninge ovakriste.” —
- “Oinima oyo aishe oipupulu yovatilityane. Fye itatu ka efa eitavelo letu twe li pewa koomeekulu nde hatu ka itavela oipupulu,” —Nekulu ta tongo nouladi.
- “Odula otai di mombao yondudu Shipa,” —Namaria ta ingida nome-sho aye taa holola kutya, ta popi noudano.
- “Oushosho wondjaba nomakipa ayo otaa kulifa oilya, ongaashi oomeekulu ve shi tonga nale,” —Nangula ta wedele eenghundafana.
- “Oinima iyapuki kai shi kudanaukwa na yo,” —Nekulu ta pukulula.
- “Kalunga omunaenghono e dule eendudu neemhepo adishe dii. Oye oku li po e tu hole unene fye ovalaule nde a hala oku tu hupifa mepangelo leemhepo dii.” —
- “Kalunga ota hupifa ngahelipi?” —
- “Ngenge hatu liyandje kuye ote tu amene keemhepo dii, eshi oshili. Itatu pumbwa okutala eendudu ile owii washa, osheshi okunyanekelwa ile eisho lii ile ehalo lii kali dulu oku tu etela oshiponga sha sha.” —
- “Tashi dulika tuu kutya, tu mone oshiponga shoudiyo ile shoikuti ile shodimbo yomutwe?” Nauyoma ta pula.
- “Noita noitondokela?” —Kashini-ni osho ta pula. Oye a ninga unene omatwi male mokupwilikina eenghunduna nokwa uda ko yo oinima ihapu.
- “Oshiponga sheehedi tashi holoka tuu mbela?” —Nangula ta pula.
- “Nande omunhu mwii a hala oku tu monifila oshiponga shoudiyo ile shodimbo yomutwe ile shoikuti, otashi dulika kutya, Kalunga te mu kelele nomunhu ita mono omhito yokuwani-ediladilo laye lii. Osho Kalunga ta dulu yo okukelela ovanhu okuya koshitondokela, nande ove shi diladila nove shi hala.” — Taku twikilwa

OUNYUNI OTAU TONGO SHIKE

EEDOOLOPA MBALI DOVABANHU TADI KA KOSHA R615,000

Pashiivifo la Odendaal otapa ka tungwa eedoolopa mbali dOvabanhu, imwe opOkatana mOwambo, na ikwa-wo opomina ya Uis mu Damaraland. Oimaliwa i fike peeR370,000 otai ka longifwa pOkatana, opo tapa ka kala oshipangelo shAfrika sha kula shOvabanhu. Hano eedoolopa odo otadi ka kala di na ominino domeva oo a pumbiwa nodaa inaa pumbiwa. Odoolopa yopUis otai ka tungwa noimaliwa i dule eeR245,000.

Pokatana otapa ka kala omaumbo e fike pefele nomilongo nhano.

OMATUMINDAKA A KOLA

A S. W. A.

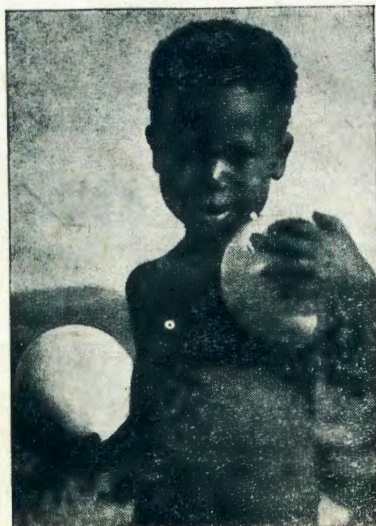
Mu S. W. A. otamu ka holoka omatumindaka Eradio notaa ka kala po ane noku na keshe limwe eenhuminghono di fike peekilowatt efele. Ehangano lokutuma eenghundana da Republika (S. A. U. K.) ola mono kutya, S. W. A. otali pumbwa omatumindaka eenghundana a kola, opo oionga i ende no i pupale nawa.

Omukwafi a kula wehangano olo okwa ya paife ku Europa omolwoshinima tuu eshi.

ONDJABI YOVAWAMBO

Pashoongalele shehangano lounamapya la S. W. A. (SWALU) osho sha ongalele mOvenduka, opa tokolwa nokutya, ondjabi yOvawambo vokodolate i lundululwe, hano i londe.

Hano pamukalo mupe wa tya ngaho otapa ka diininwa oukwashili. Omunailonga keshe ota ka kala e na ombapila yaye yoionga, i na efano laye nomumwe nota kala yo a konakonwa nawa kombinga youkolele wolutu.



OKAPALE KEEDILA MOWAMBO NEENDJILA DA FIMANA

Epangelo la S. W. A. ola udafana, hano la yandja oshilaye kehangano olo George Skolnic (Edms.) Bpk. okutunga okapale keedila pOndangua noimaliwa i fike peeR1,158,203. Eendjila domomhepo nodopedu otadi ka lunduluka neenghono mOwambo.

Ondjila yotete yotea moshilongo eshi shOvabanhu, otai ka dja kOshomeva fiyo okOshikango tai ka kwatafana neengaba da Angola. Ndele ondjila ya tya ngaha otai ka kwatafana nantango nongholongwandjila ya kula oyo ya ya ku Republika.

Okapale otaka ka pula shike eehani 14, ndele ondjila ile oshitauwa otashi ka kwata efimbo lile.

Pokati kOshikango na Andoni, peengaba da Angola otapa ka tuwa eemboola domeva.

Otapa ka kala yo oyeendifo oyo tai humbata oihwamekifo (oikwamahooli) tai di kOshomeva tai i kOkatana nokOndangua, no i na oudjuu u fika peengalona 4,000 keshe shimwe. Hano koshivike keshe mOwambo otamu ka etwa oihwamekifo yeengalona 16,000.

Konima yeedula nhatu opa li omakambaba atatu aeke moilongo ei yOvabanhu, ndele paife oku li po omulongo.

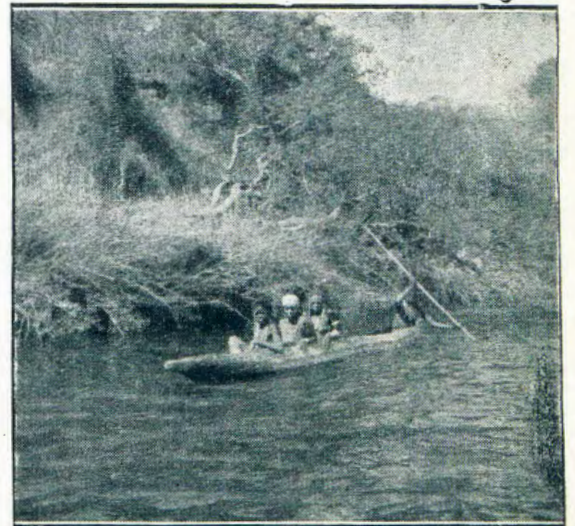
Aishe ei ya ningwa notai ka ningwa, otai ende nga pamufinda wa Odendaal.

71 VA FJA

Omolwoiponga ya etwa koyeendifo meendjila domu S. W. A. ovanhu 71 ova fya-noshi tilifa nokuli. Omudo 1959 S. W. A. ola li la kanifa ovanhu vahapu omolwoiponga tuu oyo, ndele neudo omwaalu woonakukandomwa noonakulyatwa owa londa. Ota-pa diladilwa oiponga i henukwe.

OWAMBO YOKOLUKADI OTAI KA MONA NATANGO EENDAMA 30

Dr. O. Wiplinger, omufilishisho womeva, okwa tonga mOvenduka kutya, eendama odo 30, otadi ka longifwa unene koimuna yomOwambo, osheshi oko oku na oulifilo muwa, ndele omeva a pumba ko. Eendama dikwao dikulu otadi wapekwa, nondama oyo ya kula yopOkatana otai kala ya kola efimbo keshe.



OKAWATO

Momulonga wa Kavango otamu ka longifwa okawato kekenya, oko ka mbesitelwa nokuli. Okawato ka tya ngaha otaka ka longifwa moilonga yokukonakona nokushiiva oshilongo. Kamwe ka fa aka oka longifwa nale nokuli ku Kunene.

KENNEDY KOSENAAT

New York: -Robert Kennedy, omumwaina wa nakufya Kennedy, omupresident, okwa hoololwa a ninge omukonakonwa (kandidaat), (ile omuhoololwa) wongudu oyo panghedi yokupangela oshilongo kovantu aveshe (Demokraties Party) na ye yo a ka ye mosenaat ya Amerika.

RADIO VOICE OF THE GOSPEL

Eti 18 neti 25 lya Okotoba twa wapa okupulakena ishewe moradio "ewi lyevangeli" mOshiwambo. Onke moosondaha ndhoka twa tema ooradio dhetu onti 8.30 pm. peha lya 31 meter. **MOMWEDHI KEHE MOSONDAHA ONTITATU NONTINE** tattu vulu okupulakena "ewi lyevangeli" moradio ndjika onkwaLutheri. Osondaha yotango yomwedhi tamu tuminwa ewi lyevangeli mOshinama nosondaha ontiyaali mOshihero.

Aanaradio taa indilwa ya ithane poradio aashiinda yawo wo ya pulakene "ewi lyevangeli." Nosho wo aalongi ye nompito ombwanawa okupulakena naalongwa yawo oradio.

Oradio oyo wo oshilongitho oshivanawa moshikaha sha Kalunga. Onke, omukriste, longitha oshilongitho shika opo evangeli li taandele.

AALESHI TAA NYOLA

KATU FI VALI OVAFI

Keshe ou a mangwa ku sha, oye omupika wa sho, osheshi otashi mu longifa ngashi sha hala. Fye katu fi vali ovapika, otwa mangululwa. Nale otwa li ovapika voulunde novefyo, ndele Kristus okwe tu mangulula. Oye e tu mangulula meemango doulunde nodefyo. Iyalo, Kristus, eshi we tu mangulula! Tu kanyatele pu Kristus. Ope na vahapu va mangululwa, ndele va hekwa kookaume okudina ovamangululi. Pamwe na fye twa makela oyo nokuli. Kaume koye nounyuni ei tai eta omaheka.

Tu lungame, omaheka ohaa tula omunhu momupya a li a koshwa mo. Ye nakumangulula iha kondjifa ou te li shuna meemango owina. Natu efe aishe younyuni fye tu yelule eemwenyo detu ku ye. Omadilongo etu neendunge detu adishe tu di ameke ku Kristus. Oilonga yetu aishe nai hambelele Kalunga, osheshi katu fi vali ovapika otwa ninga ovamangululwa.

Endelela u ye ku ye u ka mone emangululo fimbo taku tiwa onena.

Johannes Nadunja
Omaruru

OMUTIMA WOMUNHU... Etwikilo EINDILO

Kalunga, Omushiti weulu nevu, Omushiti wange wo, omolonghenda yoye ino ndjefa! Ooye u wete, nghee ndi li; ooye u wete omutima wange wa uva oulunde, wa ngaga wa kakelela, mwa lauva foo. - Minikila omutima wange nouyelele woye. Omhepo yoye Ondjapuki nai kale mo, opo i taatae mo omavilavilo omai aehe. - Ndele Jesus Omukulili wange, nghoha ndi kohoke. Ndjeleka ndi fetuke! Nghwafa ndi yalukile kwoye ndi ku pe olutu nomwenyo na kehe nhyo ndi shi na. Ame nda nyengwa okwiitengulula nokuza mo moupika wa Satana omutondavi wange. Ila u nghulile moupika imbu, opo ndi ninge shilishili omunhu woye, ndi ku longele. Ondi shi shii, olundji onde ku lilifa onde ku hanyifa noilonga yange. Sa nge onghenda u vime po, omanyono neengele vage avihe. Amen.

E. N. Mutilifa, Windhoek, ta ti: Owe lineekela tuu Jesus Kristus Omuhupifi woye? Mat. 6: 33 neimbilo 432.

H. Hendjolo, Windhoek, oku nepulo ngenge otwa diinina tuu eitavelo letu, osheshi omafiku aa omai.

Paulus Martin, Okahandja, ota kumagidha aantu ayehe mbo yaa shi kwiigame-na kutya, inamu lya we iikulya, mwa adha ya liwa nale, oshoka otamu i etele omikithi dhaa shi dheni. Unene tuu mbo hamu longo moohotela, mookombitha nomookafee.

Frans J. Frans, Swakopmund, ota ti: Omukwetu omuholike, ou li mongundu ya tya ngiini? To landula tuu Kristus Omukulili gwoye? Tala, eliko lyuuyuni okali na sha omwenyo nge tegu ka kanenena.

P. Nd. Manja, Swakopmund, ta kundifa neendjovo da Kalunga di li mu Iil. 14: 21-28 neimbilo 435.

Suoma Iitope, Oshitayi, ti indile ya galikanenwe, oshoka naku ya galikanena wawo okwe ya thigi po.

B. Iilonga, Okahao, ta kumagidha aanona yopoomvula 13-15 ya kale wo haa holoka koshigongi shawo, opo ya kolekwa muukriste wawo manga ye li mepipi ndika.

Johannes Haukena, Oranjemund, ota hambelele Kalunga eshi noneudo va pewa omufita wawo M. Shilongo. Okwa hafela unene omakumaido have a pewa kuye paendjovo da Kalunga na eshi ta longo osbilonga shikumwif mokati kovapaani vomOrange.

Kalunga na punike omufita ou ye na punike eongalo novakriste aveshe kombada yedu.

Silas Hashipala, Onguediva, ota hepaulula oshivilo sheefikola sha ningilwa mOnguediva. Aveshe va li va hafela oshivilo eshi.

Ai, ngeno opo wa li ngeno omudo tau ya ito kala vali nokaana ke li meumbo ile haka hulile ondjalakati.

Natana Shiimi, ota nika oluhodhi sho iilonga yomilema yi igalala unene pomathimbo nga. Ota ti: Otse katu si aana yomilema ihe oyuyelele. Tu endeni muyelele wa Kristus.

Saara Nehale, Oshigambo, oku neindilo ndi: Omuwa yapula uugundjuka wandje nowooyakwetu wo okoondkondo dhOmbepo Ondjapuki.



Sakaria Gustaf, Windhoek, ta yandje omakundo a kufwa mEhol. 22: 1-4.

Petrus Sem, Keetmanshoop, okwa hala a popife ovapashukilimaongalo neendjovo edi: OmolwaKristus tu yandjeni kuKalunga alushe omahambleleloimbilo. Oo oimati yomilungu odo tadi hepaulula edina laye.

Isak Akana, Windhoek, ota hokolola omathigathano ga ningwa mooskola dhaanona mOvenduka. Methigathano ndika aanona aawambo ya wini noya pewa ebandela. Aantu ya li po oyendji noya nyanyukilwa ethigathano ndyo.



“KONGENI OMWENE
MANGA TA MONIKA,
NYE MU MU IFANE
MANGA ELI POPEPI.”

Jes. 55:6.

Ofye ovakriste otwa pewa ku Tate Kalunga oshivike shimwe okukala peendjovo da Kalunga. Momukeshe hatu tuminwa ovaenda vevangeli have tu ningile oshivikembibeli. Oshivike shiwa shi na oupuna uhapu weendjovo da Kalunga. Shi na omapukululo mawa tae tu ulikile apa tu li moukriste wetu. Opo tu dule okwii-likanenfana mondjila ei twa pewa idju. Ndele movakriste mboli omu na ava vehe udite ouwa mu sho. Onda ifana mukwetu umwe koshigongi, okwa nyamukula, ame ondi na oilonga ihapu. Oilya yange otai hepa. Rom. 10:14.

Ovakwetu ovaholike, dimbulukweni nokutya, otwa pewa omafiku oilonga tu ilonge. Ndele okwe tu pa yo omafiku okukala peendjovo daye. Odo tadi kutifa yo eemwenyo detu. Hano vakwetu natu taleni oshivike shimwe ngaashi efiku limwe alike. Tu kale tu na odjuulufi yoku shi tee- lala. Ondi shi shi otu na ovaudifi vahapu, ovalongi novaevangeliste novafita vetu.

Ovakwetu, Omwene ne tu pe oupenda tu hale alushe okukala peendjovo daye omo hatu mono enghono neitavelo la pama. Opo tuka pewe oshishani somwenyo. 1Pet.2:4-10.

Aune Ngeno

FINSE SENDINGDRUKKERY
OVAMBOLAND
ONIPA