

OMUKWETU



No 12

DESEMBA

1963



OKUVALWA KWOMUKULILI JESUS

1. Halleluya, halleluya, halleluya,
Ounyuni hafa, kuulila: halleluya.
Ndaka yoMbibeli pwilikina
Kwa dalwa nena oMukulili, halleluya.
2. Halleluya, halleluya, halleluya,
Ndjovo yomwenyo ya popiwa,
Nale momukanda ya holoka.
Heno, nehafo imba u tye: halleluya.
3. Halleluya, halleluya, halleluya,
Kristus a dalwa, tu hafeni.
Ndjoko ya teka, tu tangeni
Kalunga ketu noMukulili, halleluya.
4. Halleluya, halleluya, halleluya,
Ounyuni aushe, panduleni.
Ndaka yehafo yeululeni,
Ngovaengeli tu imbeni, halleluya.



Desemba 1963

ONAKUKUMWA NENGE ONAKUPUNGULA?

Mevangeli lyokokrimesa omu netumbulo, twa gwana oku li dhimbulukwa. Mulyo omu noshinima tashi tokola okudhana kwetu kwokrimesa nuukriste wetu auhe ngele owo wa kwatelele mo iinima yopondje ayike nenge owo u nomwenyo shili.

Aasita, aatumwa yoMuwa, osho ye ya noya hokolola shoka sha ningwa kelundu noyo ya holololelwa shike, omuhokololi gwevangeli lyokrimesa ta tsikile nota ti:

“Naayehe mboka ye dhi uvu oya kuminwa ndhoka ye dhi hokololelwa kaasita. Ihe Maria okwa pungula oohapu ndhoka adhihe noku dhi dhiladhila momwenyo gwe.”

(Lukas 2:18-19.)

Wa dhimbulula tuu eyoloko li li pokati ka Maria naakwawo nkene ya taamba elaka lyaasita? Oshitya shoka “ihe” otashi tul’edhengo eyoloko ndi.

Aakwawo mbeyaka oya kuminwa ihe Maria okwa pungula nokwa dhiladhila oohapu ndoka momwenyo gwe.

Oku neyoloko lini po?

Okukuminwa okwo lyopetameko alike tali vulu okupita po mbala. Okuminwa okuyapuki otaku pumbiwa ndi shi mokutala nokupulakena iilonga iinene ya Kalunga. Okukuminwa akuke itaku gwana ihe. Otashi vulika nani kutya, oMukulili gwokrimesa ina valululwa nando momwenyo gwonakukuminwa. Omwenyo o gwa kala ngashi shito, inagu lunduluka nando. Omuntu ina shituka. Okathimbo okafupi akeke omwenyo gwa haluka, opwo. Ohapu, ohapu yokrimesa wo, oya pitile po ashike. Ohapu yokrimesa ndjo, ye ya ihe pevi lela, popepi, ya ningi onyama nokuli, ye ya mokatamba kiimuna, oya fa omuntu noya holoka nekwatho lyomuntu.

Ihe shike sha hokololelwa Maria?

“Ihe Maria okwa pungula oohapu ndhoka adhihe noku dhi dhiladhila momwenyo gwe.”

Ohapu kehc ya zi ku Tate, Maria okwe yi tala oyo yi nondilo. Oye okwe yi pungula nawa, ina hala oku yi kanitha nandonando. Nenge ya li ngoshiholekwa oye okwe yi holeka nokutegelela esiikululo lyalyo noku yi konakona muuwike nesimaneko eyapuki sigo lya yela. Oye okwa hempulula oye omuntu omushona awike, a mono ohenda onene a ninge oshilongitho sha Tate, “omuntu gwoMuwa.”

Maria ina kuminwa ashike, ihe okwa pungula nawa elaka lya etwa kaasita nokwe li konakona megalikano koshipala sha Tate. Ohapu ya kalelele noya longo. Noya vala omwenyo omupe, ha muye mwene ashike, ihe kaantu ayehe.

Otse aakriste twa uvaneke ngashi Maria koshipala shoMuwa tu kale aamati ye, sho twa hulitha oskola yeshasho nenge yekoleko:

Ongerki yoWambokavango oya tseyika kutya, oyo ongerki yi hole oohapu dha Kaluoga. Iilyo yayo ya tseyo oyo yene okulesha oMbimbeli. Momalongelokalunga, moongundumbimbeli, mooandaha nomomahala giilonga ge li muuwike nokokule nokuli oohapu dhi li pamwe na yo.

Oena nokrimesa ndji evangeli lyokrimesa lya hala okuya popepi natse ngomukwetu tali pulapula: Omukwetu, ongoye ndi shi ku nekhalo lyokukala onakukumiwa gumwe ashike maapulakeni yoohapu. Ongoye wa hala ndi shi oku dhi pungula noku dhi dhiladhila momwenyo gwoye.

Moohapu dhoMuwa adhike tamu zi omwenyo tagu valululitha omuntu a sa, oshoka mudho omu na oMuwa omunamwenyo mwene, oye tuu nguka a valelwa mokrimesa, a si esiku lyeso lyoMukulili nokwa yumuka kuusi mopassa. Tu kaleni, ooyakwetu, koho yoohapu, opo oye mwene a wape oku tu valululitha. Tu indileni koshipala she, oye mesilohenda lye e tu gandjele ombili moomwenyo dhetu noonkondo oompe mekondjo lyetu lyesiku kehe.

Oohapu ngele dha pitikwa okukala moomwenyo dhetu, odho tadhi valululitha shili omwenyo omupe mutse. Onakukuminwa ta ningi omumati gwoMuwa gwoshili ngashi Maria. Pamwe ongoye to pitikilwa okuninga oshilongitho shoMbepo yoMuwa, “o-

NAKUYA TA HOLOKA MEITSEYITHO LYIILONGA

Mat. 11:2-10

Aalongwa ya Johannes inaa pewa omafatululo ge vule okuululilwa shoka sha longwa.

Na tse inatu pumbwa omafatululo galwe. Otatu shi dhimbulula, mboka ya li ya tsikithwa kusatana, nkene ya mono Kristus a longo meni muyo, noya tameke okumona iinima yehupitho ngashi ngoye to vulu okuninga, okumona ondjila yomwenyo. Kristus okwa holoka tu wape okutonata.

Nakuya sho a holokele megongalo lyeni nolyetu, okwa adhele mo iilema itayi vulu okwinyenga, satana e yi manga. Ihe sho a holoka, iilema oya tameke okuenda. Omampango ya li hayi ikwatelele, noya li haye ende na go, ga kana. Onganga odhindi odha holokelwa kuJesus menilela. Odha holola, nkene dha li dha mangwa kiifundja. Ngashingeyi otadhi ende muuyeleele wa shiti. Ngame kanda li onganga no inandi lemanekwa komukalo ngoka, ihe ngele tatu yi meni nomadhiladhilo, otatu adha shoka sha li she tu lemeka. Nenge sigo onena owa mangwa? Thikama u ende!

Aanashilundu ne noombolo, naasi amuhe, otu na emanguluko muJesus. Ompito okuyelithwa, okuthitululwa nokuyumudhwa otu yi na wo muye.

Ohepele ngoye omukwetu, owa uvithilwa nale EVANGELI, mundyoka wa hololelwa iilonga iinene ya Kalunga okukonga omulunde a hupithwe. Owe li taamba?

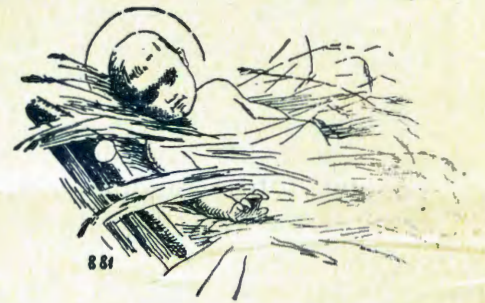
Nokuya ngele a holoka mutse, nena otu na oMbepo yoMuwa, Jes.61:1-3,10.

Owa tegelela tuu shili nakuya, nenge oto mbembeleke ashike aantu ongomutegeleli gwa Kristus ngoye ihoo taamba oohapu dhevangeli? Owa hala okutala iilonga yoye nesimano lyoye, nenge oya Kalunga nesimano lyoMumwana Jesus Kristus?

Dhimbulukwa, ou li mondolongo no moonkandja dha satana ngele owa adhika wi iyageke omutegelelwa nguka Jesus Kristus.

INO ETHA E KU PITILILE PO!
Eimbilo 4

Leonard N. Shongolo.



muvali gwa Jesus” momwenyo gwomuntu omukwawo, pamwe momwenyo gwomupagani nenge gwomushunimonima nokuli.

Elaka lyenyanyu lyokrimesa tali ningi aluhe epe, mpoka oohapu tadhi pulakenwa, tadhi pungulilwa noku dhi dhiladhila.



OMUWA E U PUMBWA, OYE NOTE U TUMU MBALA Mat. 21: 1-9.

OMuwa Jesus okwa hala okuya kuJerusalem. Mondjenda ndjika ota indile okasino e ka longithe. Ooyene yokasino oye ka pumbwa unene. Kaye nomukumo oku ka gandja nuupu. Ihe Jesus ote ka longitha owala note ka tumu mbala ka shune kooyene yako. — Ooyene yokasino inaye ka ndalapatela, oye ka gandja ngaa nenyanyu, ka longithwe kuJesus, meinkelo otaye ka galulilwa mbala. Einkelo li thike mpaka itali monika nuupu mokati kaana yaantu, oshoka einkelo ndika olya kwatathana neitaalo okwiitaala oohapu dha Jesus. Omukeeneitaalo ina tegelela Jesus ta shunitha mbala. Jesus ngele ta pula nando okatiki, okasipenitha nenge okathilinga e ka longithe ye e ka shunitha mbala. Omukeeneitaalo ota limbililwa ashike nokudhiladhi'a ota yi moluhepo. Ngele ando okwa pula ethimbo noonkondo dhetu, omukeeneitaalo ota limbililwa ashike nokudhiladhila ota yi moluhepo. Ngele ando okwa pula ethimbo noonkondo dhetu, omukeeneitaalo ota limbililwa ashike nokutala oti ishundula ngele te shi ningi. Otwa hala aluhe okutindila Jesus shoka tu shi na, opo tu ihupithile, osho omadhiladhilo gomukeeneitalo ga tya.

Aantu oyendji oya dhimbulula eyambeko lya Jesus, oyo sho ya gandja kuye shoka taya vulu oku mu pa. Oya dhimbulula, nando ya gandja, inaa kanitha sha. Oya dhimbulula owa!a kutya, aluhe oye na sha momake gawo okupa sha Jesus, neyambeko lyokomwenyo oye li mono wo olindji nokuli. Oomwenyo dhawo odhu udhithwa enyanyu olindji, sho ya vu-

lu okuyakula Jesus niinima yawo.

Aantu mboka ya li ya kundukidha Jesus mpeyaka, noya mono mbe-yaka yokokule ya gandja okasino kawo nenyanyu, oya thiki mbala metokolo ndyoka kutya, oyo wo, itashi vulika, ya kale inaa ningila Jesus sha. Oya kutha oonguwo dhawo noye dhi yala mondjila, Jesus opo a ende po. Endhindhiliko ndika otali holola, otaye mu yambele ashihe ye shi na. Mboka yaa noonguwo mbali pethimbo ndiyaka, oya kutha itayi yomiti noye yi yala mondjila ongendhindhiliko oyo itaa vulu okukala inaa gandja sha kuJesus. Oomwenyo dhaayehe odha hwama shili okugandjela Jesus. Ongundu ayihe oya imbile Jesus ehambeleo: "Hosianna, oMuna gwa David. Na lalekwe nuuyamba onguka te ya medhina lyoMuwa. Hosianna omokombanda." — Oshiningwanima shika otashi holola, aantu mbaka oya gandjele Jesus oomwenyo dhawo, onke taye mu hambelele. Jesus oto mu gandjele shike? OMuwa okwa pumbwa ashihe to vulu oku mu gandjela, oye note yi galula mbala.

M. Ngipandulua.

MENONGELO LOVAVAKULIONGALO otamu ka ningwa Kalunga nge eshi hala oshiongalele shokukundafana oshilonga shomokati kovanyasha noshofikola yosondaha. Oshiongalele otashi ka hovela eti 28/1/1964 notashi ka twikila fiyo eti 1/2/1964. Ovafita aveshe novaevangeliste aveshe ava tava longo moitaingerki, novafilishisho veefikola dosondaha nomaongalo aeshe (umwe meongalo keshe) nomwiliki woshilonga shomokati kovanyasha vomeongalo keshe ile omuponhele waye tava ifanwa ngaho aveshe ve uye koshiongalele shavo shoukumwe. Oilonga ei ivali mongerki ei yetu oi nondilo noya fimana paife nohatu teelee kutya keshe, ou a ifanwa ngaha ne uye nomwenyo muwa nehafo koshiongalele eshi keNgela. Ovo tave uya koshiongalele eshi itava pumbwa okweta sha skokufuta.

NA FYE YO OTWA IFANWA TU
UDIFE ASHIKE JESUS KRISTUS
OYE AEKE.

Joh.I:19-28.

Apeshe na akushe mounyuni ausheshe, mokukala kwomukriste otamu holoka omapulo mahapu taa pulwa kokukala kwonyuni ou, ndele omapulo aa otaa pumbwa omanyamukulo. Omukriste keshe oku nomayelesho oo a fa omapulo alushe kuye, ndele ita dulu nande okunyamukula omapulo aa, ngenge ina koneka nawa oshilonga shaye neifano laye. Hano keshe tuu oo a shashelwa medina la Jesus oye omutetekeli weuyo la Jesus etivali keongalo laye. Mefimbo eli ondeveli tai kondjo okuninginifa ovakriste nomapulo mahapu oo taa shingile kokuliholola fye vene, nokulinenepaka.

Oshilonga shetu komeho ya ashisheshe, osho okuhokolola shili Jesus mounyuni ou wa nyonauka nokutya, fye vene tu lidimbwe, ndele tu udife Jesus Kristus ou oonongo wa Kalunga wa wana shili okuhololwa mangha pe nefimbo. Johannes oye oshihopaelelwa shetu shiwa, osheshi ina holola nande osha kombinga yaye mwene, ndelene ota holola ashike Jesus: "Hame ou!" ... "Ame ondaka yomwiingidi" Johannes ota shasheshele elilululo, ndele ta hepaulula omuteelwa oo te uya okuwanifa aishe noshilonga shoMhepo Iyapuki. Johannes oku udite shili ehafo mokulonga oshilonga eshi sheudifo lelidilululo, ndele okwa tala she mu wana, ina pumbwa vali nande efimano limwe li dule olo eshi a mona omhito i fike opo okuhepaulula Jesus mokati kovanyu. Omukwetu, ove oto pulwa u kale wa fa naanaa Johannes moshilonga shoye, osheshi ounyuni otawo pula omapulo mahapu
Kep. eti- 4.

kuove: Ove lye?—Ove mwene oto longo shike?—Oto longele shike?—Owa hala shike?—Ove mwene oto litile ngahelipi? osho nosho. Momapulo aa itatu dulu nande okufinda oonyuni, ngenge inatu shiiva nawa oshilonga shetu neifano letu kutya, olo okuhokolola Jesus aeke mefimbo eli la huuninwa, tu hokolole eenghedi da ou etu ifana momilaulu okuuya kouyelele waye woshinge. Moshilonga eshi, ounhu wetu otau dimbuwa, ndele efimano loukalunga no loshilonga sha Jesus alike tali monika. Ovakwetu ovaholike muJesus Kristus, oshilonga shetu osho okuudifa evangeli louhamba wa Kalunga, atusheni ovo twa shashelwa medina la Kalunga katatu umwe. Kashi fi nande oshilonga shetu okupula oyiimati yoshilonga shetu sheudifo letu, tu i pule tu i mone ngeno nomesho etu mokukala kwovanhu, ndelene eshi osho oshilonga sha Jesus Kristus mwene. Oshilonga shetu osho twa dimininwa osho okuudifa Jesus oo te uya okuholola oyiimati yoshilonga shetu. Johannes okwa shasha ashike neshasho lelidilululo, ndele oshilonga shoMhepo ina dula oku shi mona nomesho okumutwe, ndele okwe shi mona ashike nomesho eitavelo. Oshilonga shetu osho okuudifa Jesus. Ihatu liudifa fye vene, ndelene Jesus Kristus, omuvalelwa komushiyakano oye aeke, osheshi oye eenghono da Kalunga tadi hupitha. Ounyuni inau hala oku mu tambula noku mu itavela, onghe okueenda kwetu naku kale itaku limbililike nande ilye, ndele tu hokolole Jesus aeke. Ounyuni moku tu pula otau hafele omapuko etu, ngenge hatu udifa sha shimwe shi lili ponhele yokuudifa Jesus.

Ofye ovatetekeli veuyo la Jesus etivali, natu ulikileni hano oonyuni wefimbo letu opo tapa monika ehupifo lomwenyo, opo omapulo aeshe taa nyamukulwa nawa. OMwene Jesus oye ehovelo nefikilo leudifo letu. Itatu udifa ashike nomakanya, ndele eenghedi detu nepopiwo letu liwa neendjovo detu defiku keshe, oonyuni owa hala okumona mo sha, onghe natu pashukileni okukala kwetu akushe ku kale taku holola shili kutya, ofye ovatetekeli va ou e nefimano linene edu nefuta la hala okuyonhapo koshipala shaye.

EGONGALO TALI LONGO MWORANJEMUND

Konima yelangeko lyomubisofi L. Auula sho a langekwa koNiipa moshilonga she, okwa li a kala iiwike iyali ayike moWambo nokwa yi kwEuropa, hoka a kala ko uule woomwedhi mbali netata nokuli. Mokugalukako kwe a pitile kwOranjemund, opo a talele po egongalo ndika. Sho egongalo ndika lya Oranjemund li na omihandjo ne ominene dhi lyaathane kokule, onkene omubisofi okwa li e nokutopola nawa omasiku ge, opo a popithe po kehe omuhandjo moohungi ndhoka dha ningilwa moongerki dhamo. Moohungi dha tya ngeyi okwa hokolola olwendo lwe okuza koWambo sigo kwEuropa nokwe tu pa wo omakundo omawanawa ngoka ga zi kookuume ketu yokokule.

Ehokololo lyolwendo lwomubisofi olya li po tali nywitha nawa omakutsi moku li pulakena, onkee omaputo oga holoka ogendji. Moonkundathana ndhika twa talele po nokuli omavi gokokule niilongo yokokule pambepe. Otwa pulakene nawa nkene e tu fatululile uumbwalangandja wesilohenda lya Kalunga, noshilonga she okuhumbata iimpwiyu oyindji mongerki. Onkee ano twa dhimbulula kutya, a gwana shili a yambidhidhwe kehe esiku momagalikano gooitaa-li ya Kalunga.

Omubisofi okwa pandula natango egongalo sho li na aayakuli yalyo oyendji, mboka taa pukulula aamwayina moshimpwiyu shika sheyakulo lyoomwenyo dhawo. Onkee konima yomapopitho ge mookomboni adhihe opwa ningwa oshigongi shaayakuligongalo lya C.D.M., ngashi opwa dhimbululwa, ope na aayakuli: aakuluntu yegongalo, aauvithi, aalongi yooskola dsheshasho nodhekoleko nosho wo dhekonkolo, aalongi yigongi yaagundjuka nomalwimbo naalongi yoongundumbimbeli.

Oya li po ya gongala konyala 65 aayakuli ya tya ngaaka. Moshigongi shika omwa li mwa kundathanwa eyakulo lyegongalo, nkene li nokwenda, omusitagongalo ngele e li po nenge kee po. Ayihe tayi ningwa nga ngaashi moWambo. Opwa dhimbululwa ishewe elagohenda lyegongalo lya C.D.M., sho lya pewa omusitagongalo gwalyo Metusalem Shilongo.

Mokuza po kwomusitagongalo gwetu sho ta ka fudha po manga, opwa hogololwa peha lye Silvanus S. Nangombe nomuyakuli gwe miilonga E. P. Auula.

Ehulitho lyoonkundathana lya ningwa komubisofi, sho a lesa 1Petr.5:1-4.

Omusitagongalo M. Shilongo okwa pandula aayakuli ye nokutsa natango omukumo, ya tsikile iilonga yawo nuudhiginini. Okwa yi pamwe nomubisofi koWambo. Oye e tu kumike natango noohapu dha 1Aak.19:9:14. Osho oomwenyo dhetu nomalutu getu ga talalekwa noohapu noonkundana oombwanawa.

One mu li moWambo otamu kundwa ngeyi kegongalo lya Oranjemund.



ONDJALULAMASIKU ya holoka. Otayi pula 5c.



Ehala ndyoka Otjimbingwe olya kala kokule nomadhiladhilo getu, edhina alike shila twe li uvu nale. Ihe ngashingeyi sho oskola yuusita ya tembukile hwiya, Otjimbingwe ayihe ya hedha popepi na tse, ngele inali hedha popepilela manga, oya hedha ngaa.

Momasiku ngaka opwa holoka natango okanima kamwe, take tu hedhitha keha ndyoka, oko okambo, **Kuku Johanna Gertze**. Okambo haka taka hokolola omukriste gwtango mOtjimbingwe, oye omuHerero Uerietta, ngoka a pewa edhina Johanna meshasho. O, uuyamba u thike peni wa pungulilwa mokambo haka okashona. Oka nyolwa nale moshiAfrikaansa, ihe omulongi Liina Mpanda okwe ka lundululile moshiNdonga.

Omulundululi mwene ota nyola ngeyi: "Mpaka ope na sha komuntu kehe, omunona nomukuluntu. Oye ndji oye na omapulo ogendji, nkene ya yakule moshilonga sha Kalunga nokuthikitha iinakugwanithwa yawo.

Lesha ano okambo haka eto mono epola."

OKAANDJETU

JANUALI



AASI MOLUKONDA

Elisabet	Samuel	a si	13.	1.	62
Hilma	Naeman	,,	22.	1.	62
Noa	Josafat	,,	29.	1.	62
Abner	Sakaria	,,	3.	2.	62
Jason	Viktor	,,	8.	2.	62
Alina	Namugongo	,,	11.	2.	62
Abraham	Nangombe	,,	11.	2.	62
Sigrid	Abed	,,	17.	2.	62
Rakel	Elia	,,	17.	2.	62
Johanna	Akuake	,,	19.	2.	62
Elisabet	Shifugula	,,	7.	3.	62
Vilho	Shikongo	,,	18.	3.	62
David	Angombe	,,	1.	4.	62
Priskilla	Simon	,,	2.	4.	62
Israel	Leonard	,,	7.	4.	62
Paulus	Amunjela	,,	28.	4.	62
Elifas	Nakakuwa	,,	31.	4.	62
Reinhold	Ijambo	,,	3.	5.	62
Josef	Sakeus	,,	7.	5.	62
Justina	Teofilus	,,	8.	5.	62
Israel	Filemon	,,	23.	5.	62
Johannes	Filemon	,,	4.	6.	62
Josefina	Namutidha	,,	19.	6.	62
Paulus	Abed	,,	23.	6.	62
Luise	Martin	,,	24.	6.	62
Maria	Ijambo	,,	25.	6.	62
Jona	Mulokoshi	,,	30.	6.	62
Jakobina	Shimana	,,	4.	7.	62
Sakeus	Kague	,,	15.	7.	62
Selma Diina	Nguilili	,,	18.	7.	62
Elisabet	Nangolo	,,	21.	7.	62
Martta	Ijambo	,,	30.	7.	62
Vilhelm	Filippus	,,	13.	8.	62
Johanna	Nuule	,,	6.	9.	62
Samuel	Amakali	,,	18.	9.	62
Petrus	Nangolo	,,	mushimba		
Fenni	Petrus	,,	11.	10.	62
Vilbard	Nahenda	,,	5.	11.	62
Hilma	Silvanus	,,	6.	11.	62
Kornelia	Shindi	,,	17.	11.	62
Priskilla	Kandjungu	,,	21.	11.	62
Katrina	Nangolo	,,	28.	11.	62
Emilia	Ashikango	,,	29.	11.	62
Anna	Kamati	,,	10.	12.	62
Benhard	Nambahu	,,	11.	12.	62
Fritz Angula	Andreas	,,	11.	12.	62
Johannes	Amutenja	,,	13.	12.	62
Nimrot	Kanjene	,,	20.	12.	62

1. W. OMUMVO OMUPE.
Edhina — Jesus.
Hebr.13:8. Joh.14:12-14.
Jes.43:1-3.
2. Do. Luk.4:16-21. Mark.1:1-8.
3. V. Jes.43:16-19. Mark.1:9-13.
4. Sa. Jos.1:1-9. Mark.1:14-20.
5. S. oS. ya landula oMumvo oMupe.
Esilohenda lyeshasho.
Kol.2:11-15. Joh.1:29-34.
Jes.63:9-12.
6. M. ESIKU IYAAPAGANI.
Jesus, uyelele wuuyuni.
2Kor.4:3-6. Joh.8:12.
Jes.2:2-5.
7. D. Ef.5:8-14. Mark.1:21-28.
8. W. 1Joh.2:7-11. Mark.1:29-39.
9. Do. 1Joh.1:5-10. Mark.1:40-45.
10. V. Joh.3:16-21. Mark.2:1-12.
11. Sa. 1Joh.2:12-17. Mark.2:13-17.

12. S. oS. 1 ya landula Esiku Iyaapagani.
Eopalo lyongulu yoMuwa.
Hebr.3:1-6. Joh.7:14-18.
Omayel.1:7-9.
13. M. Mark.1:1-8. Mark.2:18-22.
14. D. Mark.1:9-15. Mark.2:23-3:6.
15. W. Joh.1:35-42. Mark.3:7-12.
16. Do. Mat.4:12-17. Mark.3:13-18.
17. V. Hebr.2:13-18. Mark.3:20-30.
18. Sa. Joh.5:19-24. Mark.3:31-35.
19. S. oS. 2 ya landula Esiku Iyaapagani.
Jesus, oMwene gwomagumbo.
Ef.6:1-4. Joh.4:5-26.
1Mos.39:1-5.
20. M. 2Mos.34:29-35. Mark.4:1-9,13-20.
21. D. 2Kor.4:3-6. Mark.4:10-12.
22. W. 2Kor.4:13-18. Mark.4:21-25.
23. Do. Gal.1:11-24. Mark.4:26-29.
24. V. Mat.16:24-28. Mark.4:30-34.
25. Sa. Fil.3:20-4:1. Mark.4:35-41.
26. S. SEPTUAGESIMA.
Jesus ota pendutha eitaalo.
Hebr.11:1-10. Joh.4:27-30,39-42.
Jes.44:6-8.
27. M. 1Kor.1:26-31. Mark.5:1-20.
28. D. Fil.1:27-30. Mark.5:21-34.
29. W. Rom.3:21-28. Mark.5:35-43.
30. Do. 1Kor.3:5-9. Mark.6:1-6.
31. V. Mat.10:40-42. Mark.6:7-13.

OMULONGI MOSES HAIMBILI

OMwene Kalunga okwa fana omumati nomulongi woshilonga shaye Moses Haimbili eti - 4 lya Okotoba a dimbuke moilonga oyo ye mwene.

Omulongi ou okwa kala efimbo lile moshilonga shomepya loMwene nokwa longwa mokati ketu noupenda nouidiini fiyo opehulilo. Omulongi Haimbili oye umwe womovakriste ovo va shashwa tete moUkwanyama, eshi evangeli le uya kwinya mounyuni wa Ueyulu. Oye okwa shashwa pamwe nokakadona kaye.

Vo inava shuna vali komaumbo oohe, ndele va kala pongulu fiyo efimbo londjala idjuu, fiyo oita younyuni 1914-1917. Oyo ya ya koNdonga 1916 nova hambolifwa komuhongi Nakambale Kanene moLukonda, Omudo wa shikula oye okwa hovela oshilonga shoulongi moNalulago, meongalo lo-koNaipa omewiliko lomuhongi Liljeblad. Omudo 1926 a tambulilwa moseminari pe-fimbo lomuhongi Väanänen (Shimuele) nokwa pita mo 1928. Konima yodula eyi okwa langekwa moKambebe (koNgenga), omo a longwa cedula omilongo nhatu na nhatu. Oye okwa kokola nokwa tunga pota-Kambebe pamwe nomulongi mukwawo Gustaf Nashinge.

Pehovelo lomudo tuu ou 1963 omulongi Haimbili a hovela okukanifa oukolele wolutu, oye nomukutukadi waye nosho yo omona waye oshiveli ou e mu tetekela a hulifa owenda waye eti-16.9. Omulongi wetu okwa li a teelete oMwene ngaashi okwe tu lombwele luhapu: "Ondi li pokufika keumbo", ile: "Ohandi teelete oMwene wange moKambebe".

Omulongi Moses Haimbili okwa li e hole unene oshilonga sha Kalunga. Ehalo alihe olo kwa li e li na ololo, ovana avshe va ninge ovashikuli va Jesus nova mone omhito okuya moshilonga shaye.

Oye ina lalakanena efimano nouyuni wounyuni ou nande. Elalakano laye la li ololo, ngenge e li moshilonga sha Kristus, olo efimano laye. Mokutala komesho okwa dimbwa eyi yokonima, nde ta taalele kondjabi. Oye okwa li shili omuyeluli wouyelele. wa Kristus mokati ketu. Onghe hano nda hala okutya: "Landuleni eemhadi dovalongi veni nye mu tale ehulilo leengeda davo".

Umwe womovalongwa vaye
T. Alfeus.

EHAMBELELO.

Eshi okutwi inaku shi uda neisho inali shi mona, sho inashi uya mo momwenyo womunhu.

Ame ohai hambelele Kalunga konghenda yaye omolwokambo aka: SHA KALUNGA SHI PENI KALUNGA, shashi oka longwa nge shihapu shonghenda yaye. Omwenyo wange owa manguluka okuyandjela sha oMwene, ongalo ile oiyandjiwa. Onghe ohai halele ovakwetu ava ve he

uditeko natango oshinima eshi, eendunge nohole neliinekelo alishe. Ovakwetu ovaholike, tu lilongeni okulongela Kalunga mongudumbibeli, melongelokalunga nosho yo moilonga yetu.

Tu pwilikineni: Eitavelo li he noilonga ya fya. Ileni ovakwetu, tu longeleni Kalunga ngashi Kristus e tu longela. Otwa pewa omaano, tu yandjeni omaano! Jak. 2: 14-18.

Willem S. Mungandjela,
Walvisbaai.



Foibe Antonio miilonga yomwapteeki moNandjokwe.

EIMBILO LYOKRISMESA.

- I. *Jesus 'hole ndjoka yoy'*
Ya holoka, kevalo nehupitho lyesindano.
Oyo tuu ya udhitha 'mwenyo ngu, gwoy'
Nogwa Tate Kalunga yi kumitha.

Koor: Oye kwe tu tumine
Jesus, ePona lye.
Ye nota sindana
Sig' aluhe.

- II. *Jesus twe ku indile,*
Tu yambekela 'siku lyesindano neyambeko,
Tu kale twa yambekwa pahapu dhe.
Tse notatu endithwa koMbepo ye

Koor: Oye kwe tu tumine
Jesus, ePona lye.
Ye nota sindana
Sig' aluhe.

- III. *Siku ndi lya yambekwa,*
Shoka ye mwene okwe li yambeke sho kwa valwa.
Luhe tu neligolo mesiku ndi
Lyevalo nehupupitho lyegongalo.

Koor: Oye kwe tu tumine
Jesus, ePona lye.
Ye nota sindana
Sig' aluhe.

Immanuel A. Engombe.



MEPYA LYETUMO

Oshimpungu shandje

Kalunga mwene ngele a hala okulonga sha mungoye, itashi nyengana nando.

Tango sho nda li ndi nokukonga oombapila dhetaambo lyomoskola yaapangi. Onda nyola wo eindilo ndi hokolole, shoka tashi fala ndje moskola yaapangi. Onda nyola ngeyi: Onda hala ndi taambelwe moskola yaapangi ndi mone wo nando oshimpungu shimwe mepya lya Kalunga.

Ihe sho nda piti, natango mowenyo gwandje ohamu inyenge edhiladhilo ndi, natango tuu inandi mona oshimpungu sha gwana. Ondi nokuninga shike ano?

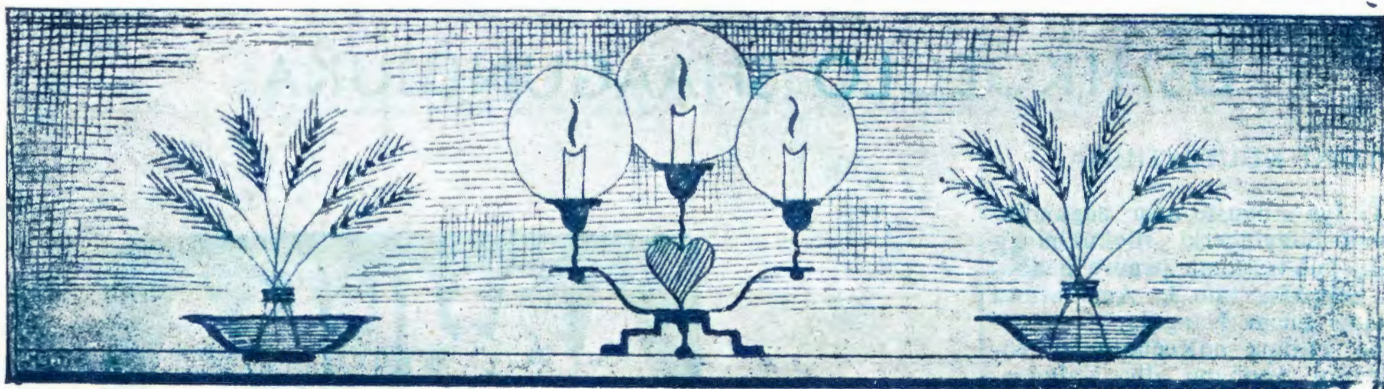
Esiku limwe onde ende koKavango, ihe onda mono oluhepo, nkene aavu oyendji, ihe moshipangelo omu na omupangi gumwe nenge yaali komutumwa. Onda dhiladhila, ndele tandi indile aakuluntu yandje yoko-Nandjokwe notandi hokolola sho koKavango ku li, otandi yi ko. Nani ha sho Kalunga a dhiladhila shoka. Oshigongi shaapangi sho sha ningwa, omusamane Markus lihamba okwa hokolola, nkene ye na oluhepo moshilonga shawo. Na ngame wo nda kwatwa kehalo ndi ye ko ando.

Ihe nani momwenyo gwa gumwe onga ngame, oye wo omupangi omugundjuka, mwa penduka ehala, a ye ko okulonga metumo. Momwenyo gwandje otandi ti, otse na ye tatu yi ko. Omundohotola sho twe mu pula, okwa zimine omukwetu, ihe ngame, awe, aniwa ndi nokukala peha lya ndje.

Ohaluka yowala, otandi lombwelwa, oto vulu tuu okulonga kuNkongo. Ngame onda ti: eeno. Onda nyanyukwa, sho nda mono ompito okuya ko.

Kalunga ngele a hala oku ku longitha, nando u kale u na omaimbo koombinga adhihe, oYe mwene ta gandja ompito kungoye pahalo lye. Ihe yayee, sho nda pewa oshilonga oshinene, ihe ngele inandi dhiginina, oMuwa ota pe ndje oshipewa sha tya ngiini komeho, ngele tii ka thikama koshipala she? Ongame omugundjuka natango, oMuwa pe ndje oondunge nuudhiginini noonkondo nohole oku ku landula moompadhi dhoye aluhe!

Foibe Antonio



NOKWE YA OKU MU UVITHILA OMBILI

Ef. 2:17

Opwa pita omimvo omayuvi gaali, elaka ndika sho lya uvithilwa aantu, ihe ombili kayi po. Uuwinayi wa landu owala, nuuyuni wongashingeyi tau tegelele nokutula iita yi vule yonale. Aantu ohaa kondjithathana owala.

OMBimbeli ya puka mbela, sho ya eta elaka ndika lyombili?

OMuwa Jesus Kristus ina mona nani oonkondo okugwanitha shoka e shi uvitha? Osho oyendji haa dhiladhila.

Ihe ina dhiladhila ngaka kutya, ombili tayi ka holokela kombanda yevi ndika, oshoka uuyuni wa yonana. Ombili itayi ya manga omutondi gwetu satana ina mangwa na Kristus ina mona epangelo miigwana yuuyuni mbuka. Osho tuu shoka sha popiwa olwindji koMuwa Jesus mwene. Pahapu dhe ethimbo ndika tali ka hulila miita iilulululu yi vule ayihe yonale, nomolwa sho okwaanombili kwuuyuni mbuka okwo naanaa ngashi oMbimbeli tayi ti.

Nonando ngeyi, okwe ya okuuvithila ombili omboka ye li popepi na mboka ye li kokule.

Ombili ndjika tayi ti: ombili mowwenyo gwomuntu nepangelo lya Kristus meni lye nomokati kamboka wo taye mu longele ongoMukwaniilwa gwawo.

“Muuyuni omu li mo mu rā uudhigu, ihe kaleni mu nomukumo, oshoka onda sindi uuyuni.”

Omulanduli gwa Jesus oye ta kala wo muuyuni mbuka wa yonana, oye e na wo uudhigu, oshoka oye ondjendi kombanda yevi. Unene oye ta hindwa komutondi, opo eitaalo lye li yelekwe. Oye ta mono ondhino, esheko netidhagano. Ihe mu Jesus Kristus e na ombili. Na sho ye mwene e nombili, oye omuna gwombili muuyuni mbuka kau nombili.

OKrismesa oyo unene esiku lyevalo lyoMuwa - omunambili. OKri-

smesa otayi ka mona egwanitho lyayo, otse na ngoye ngele twa ningi aantu ye na ombili moomwenyo dhawo.

Osho tuu shi li po ngeyi? Ou na tuu ombili onkwagulu momwenyo gwoye? Oye mwene okwe tu uvanekele ngaka: “Ombili otandi yi mu thigile, ombili yandje, otandi yi mu pe.” (Joh.14:27).

Ombili ndjika oyo: ombili yeyuukipalitho nombili yeyapulo.

Ombili yeyuukipalitho oya kankamekwa koshilonga shoMuwa, oshoka oye a humbata egeelo lyoondjo dhetu, opo tu kale tu nombili. Oye okwe tu dhimina po oondjo dhetu molwesō lye komushigakano, oye nokwe tu yogo kuulunde wetu. Shoka tashi landula mpoka, tu shi lesheni membo lyomuprofeti Jesaja: “Ongame tandi dhimi po omayonagulo goye ngoshikogo noondjo dhoeye ngiikogo.” (Jes.44:22).

Omolwa shike tu kale nokudhimbulukwa oondjo ndhoka dha dhimwa po ngashi iikogo? Ombili ndjoka oyo kutya, oMuwa mwene ombili yetu.

Ombili yeyapulo oyo ndjika:

“Kaleni mwaa na nando oshimpwiyu sha sha, awe, uuthigona weni u tseyithileni Kalunga momagalikano nomomaidilo pamwe nomahambeleso, nombili ya Kalunga yi vule uunongo auhe, otayi gamene oomwenyo dheni nomadhiladhilo geni mu Kristus Jesus.” (Fil.4:6-7).

Ombili ya Kalunga tatu yi adha, ngele tatu igandja kuye ngashi tu li. Esiku limwe twa adha ombili yeyuukipalitho, ihe ombili yeyapulo yi li kokule na tse natango, oshoka otwa hala okuutha tse yene okukala kwetu. Ihe ngele tatu gandja epangelo alihe mokukalamwenyo kwetu miikaha ye, nongele inatu hala okukala we sha koshipala she, nena oomwenyo dhetu tadhi mono evululuko muye, oMuwa.

Ongoka a hala okukala aluhe e nombili ya Kalunga, e nokwilonga okutaamba wo ashihe moshikaha shoMuwa; oye e nokwilonga okwitaala kutya, ayihe tayi mu adha, tayi mu longele uwanawa. Oye e nokwitaala shili: “Ihe otu shi shi, kumboka ye hole Kalunga, iinima ayihe otayi longo mumwe uwanawa, omboka yi ithanwa pamadhiladhilo ge.” (Rom. 8:28).

Oshinima shika oshidhigu okwitaala ngaka kutse, oshoka omaudhigu ogendji niiponga oyindji tayi tu adha. Ihe omauvaneko ga Kalunga ga kola ngashika oondundu. “Nando oondundu dhi dhikuke po niikulundundu nando yi kakame, esilohenda lyandje kali kanduka po we pungoye....”

Tu taambeni moKrismesa ndjika ohapu yoMuwa-omunambili:

“Ino tila, oshoka ongame nde ku kulile, ongame nde ku ithana edhina lyoye; ongoye ogwandje. Ngele to pitile momeya, ongame ndi li pungoye, ngele ku nomilonga dhomeya, itaadhi ku yeelula eyeelu; ngele to pitile momulilo, kagu ku lungunitha, nohandje dhomulilo kadhi ku fike. Oshoka ongame oMuwa, Kalunga koye, oMuyapuki gwIsrael, oMuhupithi gwoye.” (Jes.43:1-3).

Otashi vulika, otu nokupitila esiku limwe momeya nenge momulilo, otashi ti: momathimbo omadhigu, ihe oMuwa e tu uvanekele okukala pamwe na tse mwayihe, oye e tu uvanekele oku tu humbata sigo kethikilo lyetu.

Omukwetu, inatu hala tu hambelele nokupandula oMukulili gwetu a tya ngaka, oMukulili nguka e tu gamene nuudhiginini we sigo onena. NomoKrismesa ndjika tatu vulu okugongala kumwe momagumbo getu nomoongerki dhetu oku mu imbila noku mu hambelelela esimano lyedhina lye!

Elundululo.

OSHIKOLOLO SHAAGUNDJUKA

ETALELOPO KUUTSATHIMA.

Mesiku 17 lya Auguste otse aagundju-kagongalo yomoshitayingerki shokuUningi-nino otwa yile kuUtsathima pamwe naahongi, tate M. Seppälä, tate J. Amakutuwa nomutumwapangi meme Nangula.

Otwe ende klitapa noKeeholongo, no-twa popitha aantu noohapu dha Kalunga. Etango sho lya li lya toka mesiku tuu ndyoka otwa pitilile oLumpelengwa, opo tu thike kuUtsathima kuye. Komatangolela twa thiki. Osha li she tu nyanyudha unene, sho twa tsakanekwa kaanona mbeyaka. Etsakaneko lyawo oye tu kumitha. Mpoka tatu hambelele Kalunga, shoka aalongi yawo, tate Max Endjala nomukulukadhi gwe, meme Rauha nomuevangeliste gwawo Frans Kankondi, oya longo shili nuudhiginini oshilonga sha simana mokati kawo.

Ongulohi twa teme omulilo omunene popepi nongulu yawo notwa hungile naanona. Otwa li tu udha omahambelesho, oshoka twa tala, Kalunga nkene ye mwene okwi ilongela shili omahambelesho momakana gaanona. Osha kumitha ndje unene, sho tu uvithilwa uugumwe nuumwayinathana mu-Kristus, tu u na. Konima yohungi, ano pokushuna komagumbo, aanona oye ende taa imbi. Shaa mpoka tapu ende okangu-ndu kaanona, oondjimbo ashike tu uvu.

Ongula yoSondaha otwa gongala ishe-we melongelokalunga. Naanona oya li ishe-we ya gongala oyendji. Oshikumithi ngini okudhiladhila aanona mbeyaka, ngee ye shi kulandula melongelokalunga nokuimba. Opwa li pu aanona 11 mboka ya shashwa, naahongi oye ya etele oMbimbeli. Konima yelongelokalunga oyi ithanwa komadhina noye dhi topelelewa. Kehe gumwe oMbimbeli ye oya li ya nyolwa edhina lye netumbulo limwe lyomoMbimbeli. Aahongi oye ya halele eyambeko lya Kalunga noku-fatululila kehe gumwe overse ye noku mu tsa omukumo mondjila yomwenyo e yi lamba. Aanona aadhiginini moskola oya pewa wo omagano goonguwo. Sho ye dhi zala, oya li ya nyanyukwa unene. Oye tu imbile oondjimbo dho opala. --- Aanona yokuUtsathima naawiliki yawo oye ku kundu 1Joh. 4: 7-21.

Eeno shili, aanona oya taamba noyi itaala oohapu dhevangeli lya Kristus, noyu uvite, Kristus e ya mangulula ngashi taa imbi moondjimbo dhawo nokunyanyukilwa emangululo ndi: "Megulu esiku limwe to ka ya, kuJesus shaa wiigandja."

Molwendo nduka sho twa li nomupangi, okwa li e niilonga yokupanga aavu pomahala agehe. Aasamane naakulukadhi oya soshimpwiyu shokueta nokukongela aavu yawo omiti. Oya li ya nyanyukwa noonkondo.

Aakuluntu yoyene oohapu dha Kalunga oya fa ngaa ye dhi tala oshinima shaanona. Ndele nando ngaaka, kaye li ngaa kokule okuninga ooitaali. Aanona oye na naanaa cuvitho li noonkondo, shoka nando pamwe momagumbo taa indikwa okupopya, nena omikalo dhawo tadhi uvitha evangeli maakuluntu.

Otwa lalekathana naaUtsathima, noko-matango twa thiki koNamatanga. Otwe ya



OMAKUNDILO KOVANYASHA

Ovakwetu meitavelo, oMwene Jesus okwe tu longekidila ehupitho, e tu teelee mounyasha wetu. Hano natu fikameni, efimbo liwa nolelao lopaiife. Efimbo otali hulu po. Hano endelesa manga oMwene ta monika. Fiya po ouwa wonyuni. Tu shikule eifano loMwene wetu. Natu dje onhapo yovakaenakonashanakalunga. Omounyuni mu yadi omaudjuu nomaluhodi, alushe tae tu shikula mondjila yetu.

Tala, omukulilwa omukwetu, otwa ifanwa, tu ye mepya loMukulili. Hano natu kufe etemo nekuva tu ka longe epya loMwene. Oilonga ihapu shili, ndele ovalongi ovo ovanini. Onghe hano, tu endeleseni, onye ookaume novaholike, elao nehupifo ole tu teelega. Omwenyo wange owa hala nokuhalelela ndi kale alushe peemhadi doMukulili wange nokukala kwange akushe. Nomakundo a tya ngaha

Moses Johannes,

Windhoek.

uvithile wo, noya pewa omiti. Oye na ompumbwe dhi ili nodhi ili, ihe unene aalongi, oshoka ye na omulongi gumwe awike. Nishewe aakuluntu itaa etha aanona yawo ya falwe ando pomahala ga tya ngaaka. Onkee ano taa pumbwa omagalikaneno getu.

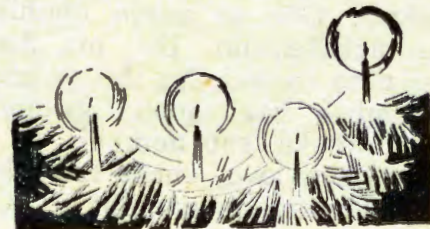
"Aanandunge taa ka yela ya fuuyelee megulu; otaa ka yela ya foonyothi aluhe sigo aluhe."

Elisabet Shiimi.

OKRISMESSA YETU YA THIKI

Oshituthi shetu oshinene sha thikana, oshituthi shoka tu shi hole nohatu shi nyanyukilwa aluhe. Naapagani mboka inaa tseya Kalunga, ohaye shi nyanyukilwa wo. Oshituthi sha tya ngeyi ohatu shi nyanyukilwa pamwe nookuume ketu nohatu pathana omagano. Eeno, osho sho opala okusimaneka esiku lya tya ngaaka, esiku lya Krismesa. Ihe otatu tegelelewa, tu gandje oomwenyo dhetu omagano koMukulili gwetu, ngoka e tu valelwa mesiku ndyo. Nyanyukilwa oKrismesa nokudhimbulukwa oMukulili gwoye nomwenyo gwoye gu mu nyanyukilwe sigo aluhe.

1. Omegulu mu nuutoye,
Moka kamu nomilema.
PoMuwa Jesus tu ka kale,
Tse nooyakwet' ayehe.
Mu nelago kali hulu,
Muuyelee wa aluhe.
2. Omugundjuka ngash' omunona,
Simanek' oMwene gwoye.
Nosho tuu omukuluntu wo,
Tanga, hambelel' oMushiti.
Tu ka nyanyukwe pombanda,
Naayengeli mboka ye.
3. Jesus te tu tegelele,
Luni tse tatu ke mu konga.
Ye okwe tu ithanene,
OnoMbepo oNdjapuki.
Tu ka imbe ekandanga,
Halleluya tu ka tye.
(Ngashi: Okanona taka tala,
oonyothi ndho dho opala)
Simon Samuel,
Kaaipstad.



OSHIKOLOLO SHEGUMBO

OSHIKE WA HOGOLOLA U
NOKU KE SHI LONGA MOSHI-
GWANA?
(Etsikilo)

Mokuhumitha oshigwana nevi lyetu komeho itatu dhiladhila owala aalongi, aasitagongalo, aapangi, ihe niilonga yilwe wo. Mokukondjela evi ndika lyetu lyokolundume, ote ti nantango ngeyi: Iilonga ayihe ngashi okuhonga iipilangi, okuhondja, okutungu, ombelewa nosho tuu ayihe otayi tungu oshigwana. Nehumokomeho otali monika mwayihe mbika.

Ohapu holoka omadhiladhilo gondhino, ngashi ndi shi shi nawa, mokudhina iilonga yimwe nokusimaneka yimwe po. Mevi lyetu iilonga ya simanekwa oyuulongi, uupangi, uusita. likwawo oya dhinika naalongi yawo. Tala ne, epuko li thike mpa: Andola kaku na aahondji yoonguwo, ando otatu zala shike, omulongi nomupangi nosho tuu omusita ota vulu tuu okuya mokati kaantu kee na nguwo? Ope na nga ngu a hala okukala megumbo lyaa shi lyongulu? Ha nawa nga nani nge tatu ka landa iinima yetu kaanastora? Ope na ngu ta nyanukwa okuuvila omambo momuti? Ano ngele omutungingulu kee po, otatu yi mono peni? Ndi shi nomusita mwene ina hala okuningila omambo pekota lyomuti? Ongiini ano tatu dhini aantungi notwe ya tala iinima yowala?



Ondi lwete nga kehe gumwe ta pula iitafula niipundi ngashingeyi? Otayi zi peni ano, ngele kape naahongi yawo? Ngele tatu dhini aahingi yomatukutuku, otatu ende peni, ngele tatu yi kiilonga? Ha nawa nga nani, ngele tatu ka thika mbala tse inatu vulwa? Ano nomupangeli gwalyo oku na oshilonga sha simana. Aanastora, aanambelelwa, aanaposa, aahondji, aanyanyangidhi oye na iilonga ya

simana. Naa simanekelwe iilonga yawo. Omunwe gumwe ihagu itompola ona, ogwa pumbwa omukwawo. Osho na tse mokulonga iilonga yetu yi ili nanyi ili, otwa pumbwathana. Oshilonga shontumba ngele kashi nomuntu nena oshikwawo itashi ende nawa.

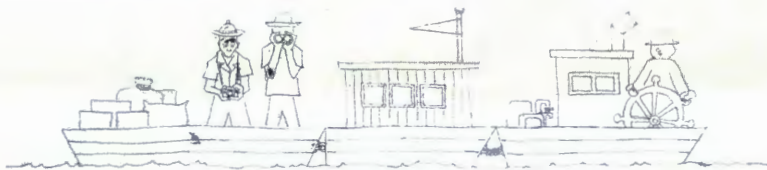
Dhimbulukweni ano "Knowledge is power" - "Eteyo olyo oonkondo". Uunongo otatu u adha menongelo. Aakuluntu, tumeni aanona momanongelo. Aagundjuka, omu nompito. Yi longitheni. Menongelo lyetu oto vulu okuilonga okuhondja, okutungu nokuhonga iipilangi. Muka oto vulu okuilonga uunongeki nosho tuu okulandula oongundu dhi ili nodhi ili. Ngele ku na ompito moka okuilonga, ila, u ilonge shaa shoka wa hala.

Tu hogololeni ano shoka tatu ke shi ninga. Tameka nena. Ongula okwa toka. Tameka ngashingeyi. Komatango okokule. Tu kwathe mehumokomeho lyoshigwana shetu mwAfrika yuuningininomutenya. Yokolundume, inamu kotha, yokolukadhi, pendukeni! Etango kuuzilo olya za ko, ihe kuutokelo inali thika natango. Natu longe manga inali ninginina. Aamati naakadhona, ileni miilonga, yambuleni evi lyoonyoko. Ileni, eeno, amuhe mwa tegelelwa tatu thigaleni konima! "Iilya oya tiliganene eteyo, ihe aalongi oyo aashona!"



Ambrosius P. Amutenya.

O N G U D I Y O U P A A N I .



Omukwatwa umwe e li livaka a hepaulula, kutya ovapiya vavo ovalaule ohave va tula meengulu tadi ende kombada yomeva nohave va twala kedu li li kokulelela. Omukwatwa ou e livaka nokwa aluka, oko e li meumbo laye, ndelene ta tila neenghono ovalandifi ovo. Shaa tuu vanya tave uya moshilongo, oye ota hondama ashike.

Kokule moilando yovatilityane ovalaule tava fininikwa okulonga oilonga idyulela. Eengulu odo hadi ende kombada yomeva tadi uya pomunghulo peenhele dimwe. Odo di yadi eeshako didyu novalaule ve noku di hambata eehani dihapu, kave nefudo nande. Ngenge pe na ou ta loloka nota fi moudju waye, ovakwawo tava lombwelwa ashike ve mu fudika meheke, nokonima yokafimbo ovo tava hambata eeshako, tava lyata ombilayaye. Ovo ve nokuhumbata yo oipilangi idyulela neengola dovakwatelikomesho voilonga tadi denge momhepo kombada yomitse davo.

Konima yokafimbo ovanhu ava va foilikama, tava hongaula oukadona, ovana vovapiya vavo, va ka nwe oikolwifa pamwe na vo. Oko ku noluhupo lu he fi kutumbulwa, osho taku tiwa. Kape na ou ta kumwa, ngenge ohamba Shikongo ya tilyaneka omesho kehandu, ye likesha nokutaka eengonyo nomakanya mwa dja ondaka tayi holola ehandu: "Ove oshilikama, kala kokule noshilongo shange." Ovakainhu va hovela okutula nova hondama. Ovalumenhu va tala ohamba nokukumwa.

Ndelene "oikunwa yomundilo"—oyo oshali yomulumenhu omutilyane—oya nengeneke eemwenyo dovanhu, nopo pwa udika vali ondokoshoinene mouhamba wa Shikongo. Oimuna ya etwa koshitondokela ya tukulilwa ovo va holola oupendamoita ile moilonga yombili. Moufita wohamba mwa wedelwa eengobedihapu. Oupenda wohamba wa pandulwe pamikalo dihapu, nokuimba

nokutanha. Oyo ya lukwa "onghoshi" i he fi kufindwa ku sha. Eembale la dyalwa kohamba la holola yoshinima eshi. Okwa tiwa yo, oye ependa linene lomoita, nande ohambayovene inai kala nokuli koshitondokela.

EUMBO LASHIIMI NOVANHU VAMO.

Eumbo laSiimi yAlyenge olo la kula nola tungika nawa, oli li pokati kepya linene. Ovakulukadi vaShiimi ve li vatatu. Eedula daye mwene kashiimba di fike pomilongo nhatu nambali. Ouyamba waye wa hapupala neenghono noye mwene omunhu a fimana moshilongo ashishe.

Omukulukadi wokelombe, edina laye Nekulu, okwa li omukainhu mule nokwawapala, nande a li pokukulupa nokuli. Onghalelo yaye ya holola, kutya oye womedimo lovanhu vokombada. Eshi a hambolwa ku Shiimi, a hangika a filwa omulumenhu waye. A hangika yo e novana vavali, okakadona nomumati, aveshe vavali va kula nokuli, nove nomaumbo avo. Mohombo yavo naSiimi mwa dalwa ashike okamati kamwe, oko Nuuyoma. Nekulu a hangika a dala oounona vahapu nokuli, aveshe kumwe ve fike pomulongo navavali nokuli, ndelene vatatu aveke vavo va kala ve nomwenyo. Aveshe vakwawo va mona oshiponga shefyo, osheshi va hu-

nwapo kovvanhu vai, osho kwa tiwa.

Omukulukadi omutivali, edina laye Nangula, oye omukainhu omunya-sha natango, ina kola unene kolutu. Ohamba yovene oye mu pa ku Shiimi, osheshi oyo ya hala okuholola ngaha oukaume wawo naShiimi. Nangula a dala oumati vavali, Kamati nEnsala, ou onghelo ya kumininwa modikwa.

Omukulukadi omutitatu omufuko, opo a dja mefundula. Oye omuhupi noa pama nawa nomunhu e hoole kupopya. Edina laye Namaria.

Ovakainhu va dunga omalodu nova teleka ombelela oyo ya vakwa kuNuuyoma. E i kufa mouhamba fimbo ovanhu va hangika va piaana omolwoshivilo. Ovanhu va hafa kombada, osheshi Shiimi a teelwa a aluke koshitondokela ne ete oinima ihapu ilili noilili. Oko te uya nokuli nomupiya waye, oye omukainhu nokaana kaye, nongobe inene, oyo ya etwa kuNuuyoma. Ovakainhu va ya ve mu shakeneke nokutanha nokuimba. Nekulu a pewa oshilonga sha fimana okuunda omutoko kofingo yependa nopokati keembinga dongobe. Nokuhafa kombada ongobe ya twalwa moshiunda nomufidani kombelela no-koitoo yomalodu. Nuuyoma a pewa onhele popepi na he. Nekulu na Nangula va holola efimaneko lavo nokutanha komesho ya Nuuyoma, ndelene Namaria e va yola noshinima osho e shi tala oshiyolifa shongaho. Ovakainhu nounona va kala omutumba pomundingililo nokutala ashike, nhu-mpi omapenda a lya noa nwa, ndelene opo va ifanwa va ka mone oihupe yeembelela noyomalodu. Omupiya a twalelwa omakipa nouhupe wombelela nonhafi yomalodu, osheshi ou ina hala a ka lye pamwe novanhu vamwe. Shiimi eshi a mana okulya oye okwa shuna kouhamba na Nuuyoma okwa ka twala ongobe kofuka koimuna ikwawo. Taku twikilwa.



11
OUNYUNI OTAU TONGO SHIKE



OMULONGA WA KAVANGO. EENGHUNDANA DA KUNENE TADI TWIKILWA.

Ngashi pwa kala eenghundwa da kwata onghama kombinga yepanuno lomeva a Kunene, fye otu shi shii kutya, ongaba pokati ka Angola no-Djoni oya enda pokati komulonga. Unene omeva a Kavango otaa ka dja kepanda tali tu, osheshi ongaba ya Angola na Suidwes oya enda — kunghula nomulonga kombinga ya Suidwes. Hano konyala omulonga wa Kavango owovaPutu lela. Suidwes na Republika ota kundakaneke omuPutu a itavele yo omeva a panuninwe eenhele odo da kukuta. OmuPutu ina hala nee oku shi uda osho.

ETWIKILO.

Oshiongi sha popiwa metetekelo osha li shi nokutwikilwa muPretoria. Omu-ministeri woiniwe noweenghundwa do-koilongo, sn. Albano Noguiera, o-ye a li e nokukwatelakomesho o- nhumwangudu ya Angola.

Pretoria.— Mu Mai neudo omu-ministeri weenghundafana dokoilongo, sn. Eric Louw (Republika) okwa kwa-telele komesho onhumwangudu ya Republika oyo ya tuminwe ku Lissabon okukundafana, nghene omeva omulonga wa Kunene taa dulu oku- kwafa nawa Suidwes na Angola, nge taa yeululilwa nawa movanhu.

ONGUDUKONAKONI YA ODENDAAL.

Ongudu ei (kommisie) ohai tu- mwa i ka konakone oyomhumbwe o- do di li po moshilongo notai twala omadiladilo ayo kepangelo. Kombi- nga yomulonga wa Kunene oya ya- ndja kutya, olusheno lomeva a Ku- nene nali tulwe pu Ruacana. Hano opo pu nepupa. Olusheno eli otalu ka yakula nawa oWambo.

OMATEMBU.

Otapu diladilwa ngaha kutya, mu- Suidwes mu ka kale omikunda nhe dovadalelwamo da kula, hano mo- lungume lwa Suidwes. Omikunda edi otadi ka kalwa kovadalelwamo, keshe ovo va fa ve lili popepi melaka no- meemwenyo, tava ningi omikunda u- mwe. Hano otashi ka eta omatembu. Oilumbu yo oyo i li opo tapu dila- dililwa omikunda edi, otai ka tembu- lwa po yo.

Eshi itashi ningwa nodibo. Ota- shi yelifilwa ovanhu nawa, va udeko kutya, omolwashike. Eenhembukilwa- nhele yo odo otadi ka kala da wa- pekelwa eehenokomesho — putuko. Ovadalelwamo ove lihana unene no- tashi kateke ehumokomesho. Tala nee omu na paife oumukundona 21 muSuidwes alishe, vovadalelwamo, wo omuvalu wavo ounini.

Omadimo oo e tondafane, nga- shi ovaHerero novaKwankala (Da- maras) itaa pakwa pamwe. Elaka yo otali shi holola.

OKATAPA.

Omuvalu wovatalelipo voinamwenyo yomEtosha neudo, owa yandja oka- tapa komivalu adishe domomido da ya. Neudo ove li 23,478. Oudwali ova li 12,000. Ovatalelipo vahapu ohava di ku Republika. Sn. Bernabé de la Bat, omukulunhu wonguduame- ni yoifitukuti yomEtosha, osho a ti.

OKUNDAADA.

Sn. De la Bat ota ka tala odila yo- shikunino osho shoinamwenyo mEto- sha, kuPretoria, opo i va kwafe mo- kundaada nawa ovo hava dipaa mo oifitukuti yavo, vo va tale yo opo tapa pumbiwa omeva. Odila ei otai kala i nekwatafano loradio nokamba yavo. Odila ei oyo Piper Cub notai landwa R 7,600.

Oshikunino eshi osho ashike ta- shi kala nodila yasho vene molukadi lwa Afrika. Oikunino ikwao ngashi: Krugerwildtuin, Natal na Betsoeana- land ohai ka ehela, nge ya pumbwa elongifo lodila.

AALESHI TAA NYOLA



OMUKWETU TA HALELE

AALESHI YE AYEHE OKRI-

SMESA OMBWANAWA

NOMUMVO OMUPE

GU NEYAMBEKO

Albin Ikelua, Grootfontein, ote tu kundu Eps. 111:1.

D. Kapia, Uukwambi, ota ti: Ongame ngu tandi pandula unene molweyakulo lyaa-pangi, sho taye tu yakula miipangelo. I-yaloo, Kalunga sho te ya pe oondunge no-hole oku shi ninga.

EKWATHOPUKULULO

One mboka mu li moWambo, hamu tuminwa iipakete niimaliwa kutse mbaka tu li mehalakano muUshimba, onawa ngele wa mono ombapila ndjoka ye ku tseyithile kutya, owa tuminwa oshipakete nenge iimaliwa. Ihe ngele wa adhika ino mona okafilipi, oto vulu okupula koposa nenge kongushe yopehala mpoka ngoye u li po, opo ihe to vulu okuyamukula nawa omuntu ngoka e ku nyolele, oku mu tseyithila kutya, iinima yoye inayi thika. Ino shunitha ombapila ngoye ino ka pula manga koposa nenge kongushe.

2) One mboka oonakutumina iipakete nenge iimaliwa moWambo, ino nyola tango ombapila yetseyithilo manga ino umba oshipakete shoye nenge iimaliwa yoye. Shi ninga oshita.

3) Onawa, ngele to tumine oshipakete shoye nenge iimaliwa yoye, moku yi tuma oto tula edhina noaderesi yomutaambi no-sho wo yomutumi meni lyoshipakete nenge mekutu lyiimaliwa. Oshoka olwindji edhina lyopombanda lya tuuka mondjila, itaku tseyika, mpoka iinima tayi uka nenge mpoka tayi zilile.

Onke ano natu tamekeni okulandula onkatu ndjika opo tu wape okumona ashihe shetu, shi tu kwathe wo moompumbwe dhetu adhihe.

Alfeus A. Amutenya
Poskantoor,
Oranjemund

INAMU TILA

Otse otu na Kalunga, Kalunga ngoka ha kwatha. Otu na oMuwa, oMuwa ngoka oMuhupithi (Eps.68:21). Otu na oMukulili, oMukulili ngoka e tu kulila muupika nomepangelo lya satana, oJesus edhina lye (1Joh.2:1-2). Omitenge dhetu ngele tadhi koko, ote tu kokithile wo oonkondo dhe. Uupyakadhi wetu sho tau lundu, ota nenepeke wo ombili ye. Omathiminiko ngele ge tu adha, tatu adhika wo komakwatho ge. Omamakelo sho ge li po ogendji, ye mwene ote ya e tu gamene. Owe shi itaala tuu?

Eps.70:1-6.

Wilho Ph. Shikulo.

EKUNDO KAAIMBITHI MBA

Paulus P. Angombe
Nabot Jona
Samuel Mbango
Tobias Nuujoma
Barnabas Shikongo
Mikael Vilhelm
Vilho A. Kapofi
Edvard J. Uapota
Josua Ndjene

Kaleni uujelele uujuni. Mat.5:14.

W. Amuaalua
Otjiwarongo.

A. Sakeus, Okahandja, ota ti: Esilo henda lyoMuwa oloyo enene. Otandi dhi mbulukwa omume yoMuwa ndjoka ya nengeneke oomwenyo dhaamboka ya sa ondjala nenota lyoohapu dha Kalunga. Ihe ngashi mombuga Moses a yelutha eyoka lyoshikushu, no-sho wo tu taaleleni Jesus, ngoka a yeluthwa komushigakano.

Pinehas Mika, Walvisbaai, ota kundifa unene ovafikameni vaye, tate E. Mung'hono na meme L. Haikondela noku va indila opo ve mu dimbulukwe momailikano avo.

A. J. Kaumbu, Outjo, ote tu kundu Ehol. 21: 1 na 2 Kor. 5: 17.

W. Jeremia Shimba, Grootfontein, 1Joh. 3: 1-3. Rom.12: 1-2.

A. Gottlieb, Tsumeb, ota pula ngaha: omukriste omukwetu, oho ende tuu noMwene? Omukriste ta pumbwa alushe epulo eli li kale momwenyo waye. Omunhu oku li po fa te lidimbike omushiyakano, te liningi omupika nomutondi. Unene fye ova-nyasha, otatu pumbwa epulo eli. Omunya-sha ta ende ashike ngashi a hala, eshi a tala eenghono daye pefimbo olo oku wete ashike a wana, olutu lwa pama neendjovo da Kalunga e di kanifa. OMwene ne tu kwafe moshinima eshi. 2Tim. 2: 22-24.

A. Petrus Kaulinge, Grootfontein, ota kundu ovakriste avesho neendjovo edi

1Tim. 2:1-7.

Teofilus Amukoto, Otavi, ota hambelele Kalunga, oshoka te ya kwatha mwayihe, ngashi miilonga yetungo lyoongulu, oshoka iilonga mbiyaka iidhigu. Olwindji otaa adhika kondjuulukwe onene okuyuulukwa aakwawo ye li moWambo, ihe oMbimbeli otayi ya hekeleke mondjuulukwe yawo. Ote tu kundu Tit. 3: 8-11.

H. Simon na G. M. Magongo, Swakopmund, otaye tu kundu Eps. 103: 8-14 na 100: 1-5.

David Esar, Luderitz, ota kundu aagundjuka oku ya halela eyambeko lya Kalunga mokukondja kwawo.

Petrus Manya, Swakopmund, ota kundifa ovaleshi voMukwetu neendjovo di li muMat. 7:7-8. Unene ota indile, ovo ve li moUshimba, va ilikanenwe.

Lukas Keendjeho, Windhoek, ota kundu aanashilonga mepya lya Kalunga Joh. 8:12.

FINSE SENDINGDRUKKERY
OVAMBOLAND
ONIIPA