



OMUKWETU

No 12

DESEMBA

1962

UUYELELE MEVI LYOMILEMA

JESUS KWE TU VALELWA.

1. Nena ndji uyelele
Aantu tse wa yelele:
Jesus kwe tu valelwa,
Otse notwa hupithwa,
Shoka tu noMukulili.
Oye ngu oMuhupithi.
2. Mwenyo tse tu yeluthe,
Tse tu endelelele
Nkoka okwa valelwa
OMukwaniilwa ngu, oMuwa.
Natu tse oongolo mpee.
Simaneko tse tu mu pe!
3. Mwenyo omupe u tu pe,
Jesus, ngu tu endithe
Onondjila yoye ndjo,
Oyi na ehulilo
Opungoy' meadhimo,
Nkoka ku neligolo.

Die Halleluya 43.

Pa Leonard N. Shongolo.

Oshigwana hashi endagula nomilema, tashi tonatele uyelele owindji;
na mboka haa kala mevi lyomilema thokothoko, uyelele tau yelele mo.

Aantu ongoye we yi indjipaleke, we ya nyanyudha enyanyu olindji;
oyo taa nyanyukilwa koshipala shoye, ngashika haku nyanyukilwa esiku lyo-
shipe ngashi haa tsoongolo esiku, taa hokana oonkwiita.

Oshoka ondjoko, ye yu uuvitith' uudhigu, nomutenya gokothingo no-
ndhimbo yomuhepeki gwawo we yi teya, ngashika kwa ningi esiku lyolugo-
dhi lwAamidijan;

no shaa olukaku talu hingi iita, noonguwo dha yaya ombinzi tadhi
fikwa po notadhi ningi oondya dhomulilo.

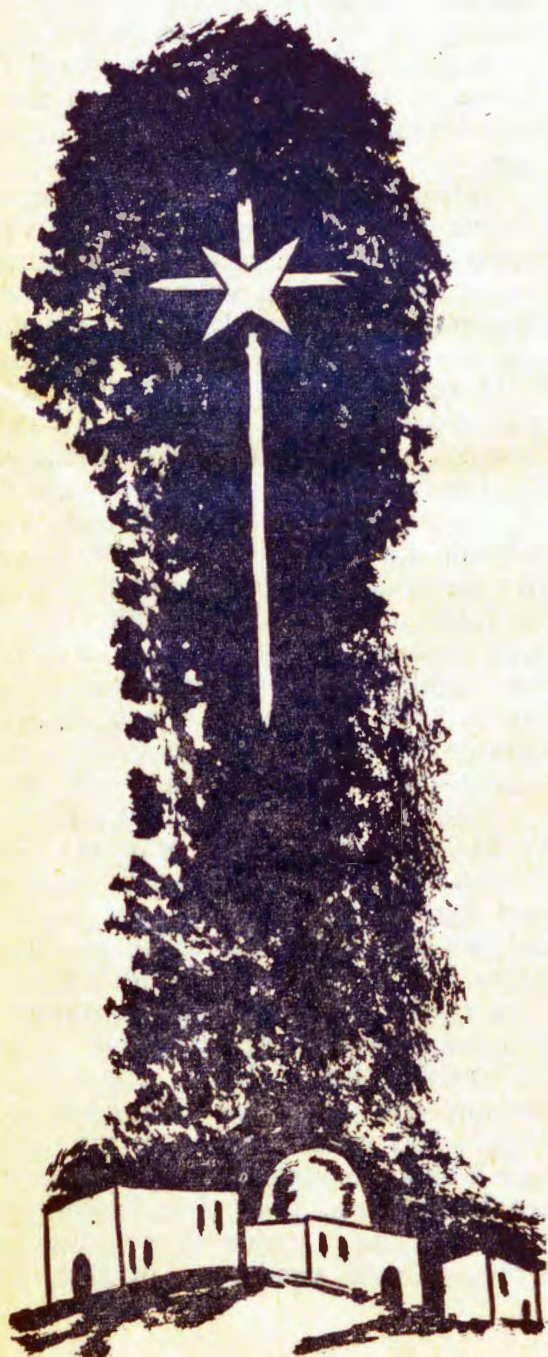
Oshoka otse twa valelwa okanona, twa pewa omumati nelelo te li
pewa kuli na komapepe ge, nedhina lye tali lukwa:

oMukumithi-Mupukululi, Kalung'-ofule, He-gwaaluhe oMuwa-omu-
nambili.

Elelo lye olindjilindji, nombili kayi na mpo tayi hulile po okoshi-
pundi sha David noshilongo oshilelwa she;

Osho tashi dhigupalithwa no tashi dhikwa keutho nokuuyuuki na
sigo aluhe.

Uuladhi wa oMuwa, Kalunga koongundu dhaakwiita tau shi ningi.





Desemba 1962

ELAKA LYOKRISMESA.

Aayengeli sho ya tseyithile aasita elaka ewanawa:

Omwa valelwa oMukulili, oye ya etele elaka lyevangeli lyokuhokolola ohole ya Kalunga okuhokwa aantu. Oshike sha li mo muyo sha gwana okuhokiwa? Muyo mwa monika ashike uuwinayi, Kalunga e ya hokwa shike? Okwe ya hokwa omolwoMwana omuvalwa awike, ngoka e etha eadhimo lyomegulu i ithane aantu ya kale ookuume ke.

Omboka ye mu taamba, oya mono, ngashi omuevangeli Johannes ta hokolola, oonkondo ya ninge aana ya Kalunga. Olyo ndyoka elaka lyoKrismesa nonuumvo. Sho tatu itala no tatu tala aantu aakwetu, itatu mono omukumo gwa sha. Mokukalathana aantu niigwana ohayi holola shoka shi li meni lyomuntu, kashi nuwanawa wa sha, eyonuko alike. Ihe mokati keyonuko evangeli naakriste otaa hokolola: Kalunga okwe tu hokwa omolwa Kristus ngoka e tu valelwa Omboka taye mu taamba, ote ya pe oonkondo okuninga aana ya Kalunga.

Hasho tuu shoka unene tashi pumbiwa? Mokukalathana kwaantu wo, elunduluko li thike peni, hali holoka mpoka aantu taa tsakanene, ayehe aana ya Kalunga? Okukalathana kwaantu yuuyuni mbuka - edhina nando li kale ngaa momambo gegongalo - kaku shi kuyelekwa nando nombili nenyanyu tali holoka mokukalathana kwaantu yi igandja koMukulili! No ha aakriste aakwawo ayeke na mboka natango ye li kokule, aakriste otaye ya uvitile ohenda, noku ya hilila nombili ya Kalunga, ndjoka itayi monika muuyuni mbuka, ihe itayi kuthwa wo kiikungulu yuuyuni mbuka.

Ininima iikumithi ya tya ngaka ohayi ningwa kombanda yevi kuKalunga awike. Opo tuu mpoka elaka lyoKrismesa lya tameke noohapu ndhoka: Esimano lya Kalunga mo-

kombanda. Nkoka Kalunga ta zimi-nwa a kale e nelelo, ote enditha nawa. Aantu mboka inaa idhimbulula manga nawa, olwindji haa pula, Kalunga oshike ta pitika, uukolokoshi owindji u lele maantu aakwawo. Kalunga sho ite endebele okugeela uukolokoshi waantu, osho eidhidhimiko lye enene, ina hala okuhanagula po ashihe kombanda yevi. Ihe esimano lye olyo oshili itayi hulu. Ngoka ine shi itaala, na tale ehistori lyiigwana, olyo onzapo okuhokolola Kalunga ita pe yalwe esimano lye. Ota tegelele, no ti ithana pamikalo odhindji, nokulongitha uuwanawa nomageelo omashona, ihe ita tegelele sigo aluhe. Ethimbo lyekongo olyo ndyoka tu li na ngashingeyi, no moKrismesa ndjika yomumvo 1962.

Omukwetu okwa hala okupandula aakwathi ye ayehe methimbo ndika lyoshituthi. Oombapila ndhoka hadhi mu nyolelwa, odhi indjipala naaleshi ya fa yi indjipala wo. No momumvo ngoka tagu ya, okwa hala oku tu yakula ngashi ta vulu. Iigwana yomoWambo no yokoKavango, nenge tu tye oshigwana shimwe nga, sho shi itaambeke ngaka oMukwetu natu galikaneni a wape no komeho okutsakanitha oshilonga she shokutseyithila aantu ehala eyapuki lya Kalunga nehupitho mu Kristus, a tsikile wo oku ya hanganitha noku ya pa oondunge mpoka tashi pumbiwa. Ombili, oombapila adhihe sho inadhi gwana mo, ihe adhihe odha leshwa. Inamu dhimbwa ashike okutula edhina noadres sho tamu nyola. Kambadhhaleni wo okunyola noondanda dha yela, aanyanyangidhi ya kale ye nuupu okuhogolola oondanda. Oombapila kehe tayi ya, unene iinyolwa ya dhiladhilwa no ya longekidhwa nawa, otayi nyanyudha aaniimpwiyu yoshifo shetweni atuhe. Tu tseyithileni wo aashiinda shetu, yi ikongele oshifo shika. Kalunga ne shi longithe no momumvo ngoka tagu ya 1963.



EHAFO LA KRISMESA.

Lukas 2:15-20

Ovafita vongaho ova ninga ondo-mbwedi yoshinima shikumwifa. Ovo va mona ovaengeli va Kalunga nova pewa elaka likumwifa kuvo: "Onye mwa dalelwa Omukulili, ou oKristus, Omwene." Oshinima eshi sha yadifa eemuenjo davo ndele ova hala okumona nomesho avo vene osho sha ningwa mu Betlehem: "Tu yeni hano muBetlehem tu tale eshi sha ningwa ko, Omwene e shi tu hololela."

Ovanhu ovayapuki vonale, ovalumenhu novakainhu ova udifwa yo ngaha keendjovo da Kalunga. Vo va mona sha shinene, ndelene elaka olo ovafita ve li pewa nena li dule omalaka aeshe onale. Apa Omona wa Kalunga, Omukulili omuvaekwa, tashi ti Kristus, okweuya mounjuni ou molupe lomunhu opo omunhu a hupifwe.

Ovanhu vonena aveshe ohava fikama nohava kongo eshiivo. ova-paani nokuli va hala okuuda oinima inene, unene oinima yokomesho. Ovashunimonima ohava kongo yo sha shi shii ku linekelwa. Ndelene ou ha kala mOmwene ta dulu okupeua elaka lomhepo ya Kalunga. Elaka eli tali mu fininike a dulike kemoniko lokeulu. Ovafita ovimuna va wilikwa keendjovo da Kalunga va ye ku Betlehem. Ombibeli tai tu hokololele: "Ovo va ya nokwendelele nde va mona Maria na Josef nokaana ka nangala metemba loimuna." Ovafita ovo tave tu hepaululile oshinima shinene osheshi; Ou ha ende mOmwene nde ta dulika keendjovo daye nde ta endebele e di wanife ota mono osho sha udanekwa.

Omukwetu omuholike. Wa koneka tuu mokukala kwoye oshili ei? Wa diinina tuu eendjovo odo we di uda nde tadi ku udanekela kutya ove yo wa dalelwa Omukulili, ou te ku pe ehupifo? Ino limbililwa vali, ndelene ninga ngashi ovafita u endebele u mone Kristus. Pwilikineni eendjovo edi: "Osheshi osho Kalunga a li e hole ounjuni oye a yandja Omona waye, Ewifa, opo keshe tuu ou te mu itavele a ha kane ndele a mone omwenyo waalushe. (Joh. 3:16) Ino limbililwa nande u udite oungone woye nouhasha woye, osheshi eendjovo dOmukulili

otadi ti ngaha;" Ovo ve li nawa ihava pumbwa omuhakuli, ovanaudu ovo tave mu pumbwa. Ame inandi uya okwifana ovayuuki, ahowe, ndelene ovalunde." Nena eli elaka la Krismesa tali ku shakeneke u li tambule nokwitavela ngashi ovafita. Ovo yo ovanhu vongaho ngashi ove ndelene mokuwanifa eendjovo da Kalunga va ninga ovatambuli voinima inene.

Eumbo la Josef ola ninga eumbo la Kalunga. Omo mu noshivilo shinene, okaana ka Krismesa ka dalwa meumbo lavo. Eendjovo da Kalunga da kundafanwa. Ovafita va hokolola ashishe ve shi uda no ve shi mona. Elongelokalunga la ningwa meumbo, ha motempeli ile moshinagoga. Ovanhu ovo va ongala va pewa oupuna uhapu. Aveshe va kuminwa oilonga ei ya Kalunga. Ndelene hasho eshi ashike. Maria okwa tuvikila eendjovo odo adishe noku di diladila momwenjo waye. Nande ke uditeko, oye te di tambula di kale momwenjo waye. Mokuninga ngaha oye a yeulula omwenjo waye koilonga ya Kalunga. Kalunga okwa mona omhito okuwani fa eendjovo daye mu Maria.

Oshivilo eshi shotete tashi tu hepaululile nawa kutya oKrismesa oyo oshivilo sheumbo. Endjovo da Kalunga tadi leshwa no tadi kundafanwa nomaimbilo taa imbwa. Jesus omo eli yo. Ovanhu aveshe vomeumbo tava ongala peendjovo da Kalunga. Ovakwetu ovaholike, omaumbo etu oku li ngahelipi? Jesus, okaana ka Krismesa, ta pewa tuu omhito okuuya mo momaumbo etu? Tatu diinine tuu eendjovo da Kalunga momaumbo etu ile tu noinima ikwao oyo tai kala mo? Momaumbo mahapu omu nontondafano nondubo newelelo lopashipaani, ovanhu va kolwa tava dengafana, omu noluhondelo n. sh. t.. Ovakwetu ovaholike, Jesus opo eli tuu meumbo latjangaha? Ahoe, Jesus ita kala momaumbo e li ngaha. Jesus a hala okuwapaleka omaumbo etu. Oye a hala okukufa po oinima ii noku tu pa oinima ipe ponhele ya yo Ohatu mono mOmbibeli kutya Jesus eshi euya keumbo la Sakeus, oinima aishe ya lunduluka. Eumbo lomukengeli ola ninga eumbo la Kristus. Mokrismesa ei Kristus ta kongo omhito okuuya momaumbo etu no meemuenjo detu yo. Omunelao ou te mu tambula. Oye ta pewa epuniko linene. "Ashishe ohandi i shitukifa ipe."

Elaka la Krismesa elaka likumwifa. Otali tu etele etimaumbwile nomwenyo nehafo. Kristus, Omwene woKrismesa ota teeleele tu tambule evangeli eli tu ninge ovafjuululi pamwe naye. "Tu yeni hano ku Betlehem tu tale osho sha ningwa, Omwene e shi tu hololele." Amen.

T. Pentikäinen.

KALUNGA OTA HAFIFWA KOSHIVANA SHI NA OMWENJO

(Joh. 3: 16).

Oshiwana (ounjuni) owa fja koshipala sha Kalunga. Oye okwa tokola, e u efe u fje u fiilile, 1Mos. 6: 3. Oye a fa a nyengwa, nande oye iha nyengua kusha. Okwa tokola a yandje oMona waye Jesus a etele oshiwana (ounjuni) omuenjo.

Omunhu eshi a tambula Jesus, omwenjo uoshiuana, Kalunga okua tuma yo omunhu a twalele oshiwana omwenjo ou, Kristus, opo shi ninge edimba liwa kuye. Okwa tuma ovaprofeti novahongwa novaitaveli vahapu moshiwana, shi kale shi na omwenjo womuKristus. Kalungae shi hafele.

Oshiwana otashi twalelwa omuenjo ngahelipi? Pamwe hatu teeleele u twalwe mo kovafita, kovaevangeliste, kovalongindjovo, kovalongifikola, kovatumwa n. sh. t. Ohatu va teeleele naanaa, va kale ovaprofeti novajapostoli va etele oshiwana shetu omwenjo, opo Kalunga e shi hafele shili, nge shi na Jesus Kristus, omwenjo woshiwana moku mu itavela.

Omweno ou itau tandavelifwa ashike kwava, nde tau tandavelifwa yo koilonga, Jak. 2: 14-26. Omumwameme, Kalunga e ku pa oilonga u jakule olutu loje oUambo, u na mo ofitola, okamba, oshihauto, okafangufangu, omutoloki mombelewa, omukulunhu poshashijona jomakambamba, mongushe joipakete, omutokolindjovo, omukalele ponhele jovatumwa, to lilongifa moshinjangangido noshihakulilo, omutungingulu, omuhongimiti, omunambelewa jofikola, hamushanga, omuhondji woikutu, omuibifi, omujakuli molupaleongalo n. sh. t.

Ovamwameme mu Kristus novajakuli voshiwana pamwe naame, mejakulo eli otwa etela tuu oshiuana oshiwana? Otashi kala tuu shi na



Kristus? Nge hatu teeleele oonakukala ofika moshuudifilo va etele oshiwana omwenjo, ohatu eta po ongunga. Okukala u na ongunga noshiwana sha Kalunga oko okweta efjolela moshiwana.

Omumwameme, efimbo eli vahapu ihava holoka nawa mongerki osondaha, ova ongala pwove. Oho va tale ngahelipi? Ove na tuu omwenjo uomuKristus? Ovanhu ava otava ka pulwa tuu komufitaongalo ou nda teeleele e va etele omwenjo?

Oho diladila ngahelipi oshiwana eshi shoje? Heno, onawa, eshi hatu dimbuluka oipo jonakwetela oshiwana omwenjo, ndelene tala nawa, u kale jo neendunge di shi okwetela oshiwana shoje Kristus, omwenjo woshiwana.

Oshiwana nande nashi shake-nue keembinga adishe kouwa wa wana mounjuni ou, tala, nge kashi na Kristus, ashishe otashi i mekano. Kalunga oha hupifa ou a itavela eendjovo daje noMona Jesus Kristus, Joh. 1: 12. Omwene ne mu jambeke.

Malakia Hauuanga.



'OMUWENYO GWANDJE HAMBELELA OMUWA.'

Onduuvite osho esilohenda enenenene lya tate Kalunga sho nda mono ompito nesilohenda ndika okuhumbatwa komagalikano geni ookuume meitaalo, ethimbo lyondjenda yandje ku AMERIKA sigo Suomi.

Otandi mu pandula nokuhambelela tate Kalunga one ookuume meitaalo sho mwa humbata ndje momagalikano ethimbo ele. Otandi pandula ooitaali yongerki onkwavangeli pa Luther yomOwambokavango amuhe. Nane wo ookuume yoomongerki dhilwe, nomomavi galwe otandi pandula tate Kalunga omolweni. "Omwenyogwandje hambelela Omuwa."

Esiku eti 15.1.1962 onda londo medhila mokapale ka Wenduka nonda yi ku Johannesburg. MuJohannesburg onda li nda ka tegelela omazimino gepangelo, nomakonakono opo ndi ye ku Amerika. Ongerki yetu, nepangelo lyetu, nepangelo lyaayamerika olya pendje ezimino oku ya ku Amerika- Momaudhigu Kalunga a egulula iiyelo no nda yi ku Amerika. Eti 20.1.1962 komatangolela otwa londo egumbo enene lyomombanda okuza mu Johannesburg nokupita miilando mbika: Salisbury muRodesia. Kenya Nairobi, Roma, Duitsland, England sigo eti 21. 1. 1962 komatango otwa thiki mu Amerika moshilando oshinene New York. Miilando twa pitilemo oonkumwe dha holoka oku tala iinima iipe. Osho wo oku tala oondunge dhoka Kalunga e dhipe aantu, nkene dha longithwa. Onda kuminwa wo uunene woshilongo sha Kalunga.

AMERIKA, oshilongo oshivanawa shoopala okutalwa. Evi olya yelekana eluudhe, ihe oli na oondundu koombinga dhimwe. Evi lyomiti dhoopala, omile dha ziza nawa. Oku na omaha gamwe ga fa ombuga otaa yelekele okutsikamo omiti. Evi olyuudha omatale, nomilonga. Oli na iilongwa mo oyindji yomaludhi ogendji. Oyo ohaa longo omapya omanene. Ohaa longo iilya, noma-pungu ogendji gendji.

Inamwenyo oongombe, iikombo, oonzi, uukambe oko yi li wo. Mbyoka yomomakuti inayi fa naanaa yetu. Uudhila noodhila odhi ili. Omwidhi wo inagu fa naanaa gwetu.

Ihe okuna nga iinamwenyo yafa yomu Afrika.

Omaopalo omanene, niikumithalonga oyindji oto kuminwa, omatungo noondjila nkene dha longwa. Oto kumwa kowindji waantu muuyuni. Osho wo iiyenditho: omahauto oondhila omaludhi gi ili na gi ili omashina, nsikepa. Oshilando oshina amatulilo omawanawa. Iilonga yoofambilika otayi nyenge oondunge dhomwafrika. Ngoka ina igilila okutala iikumitha mbyoka.

Mu Amerika omuna aantu yomaludhi ogendji gomuuyuni. Aatokele naaluudhe wo. Ihe aaludhe otaa monika unene miilando ngashi NewY ork Momaha omakwawo oya pumba mo. Aantu aanambili. Ohole yaantu naamwayinathana aakriste oya holoka nawa miinima oyindji. Momaha agehe omuyenda ota taambwa nenyanyu. Omuyenda ta kumagidhwa aluhe a dhimbwe uukwiilongo nuuyenda we. Opo a kale uuvite uukwagumbo.

Iilonga yomomagongalo otayi dhigininwa. Oosikola dhosoondaha, oongundumbibeli, omalwimbo, otaga simanekwa. Aagundjuka oyena omahangano gawo okuhumithathana muukriste osho miinima yilwe. Ongerki nomagongalo ogapupyala okulonga oshilonga sHETUMO. Aakriste oya huma nawa komeho moongalo opo ehupitho lyomu Kalunga li ye sigo okooha dhuuyuni. Mu Amerika otwa li tu na oshigongi shaawiliki yaagundjuka yoomongerki oonkwa Luther dhomuuyuni auhe. Ookuume keni mbeyaka twa li nayo moshigongi shiyaka, osho aamwameme momagongalo ngeyaka otaye mu kundu noku mu galikanena. Oshi-

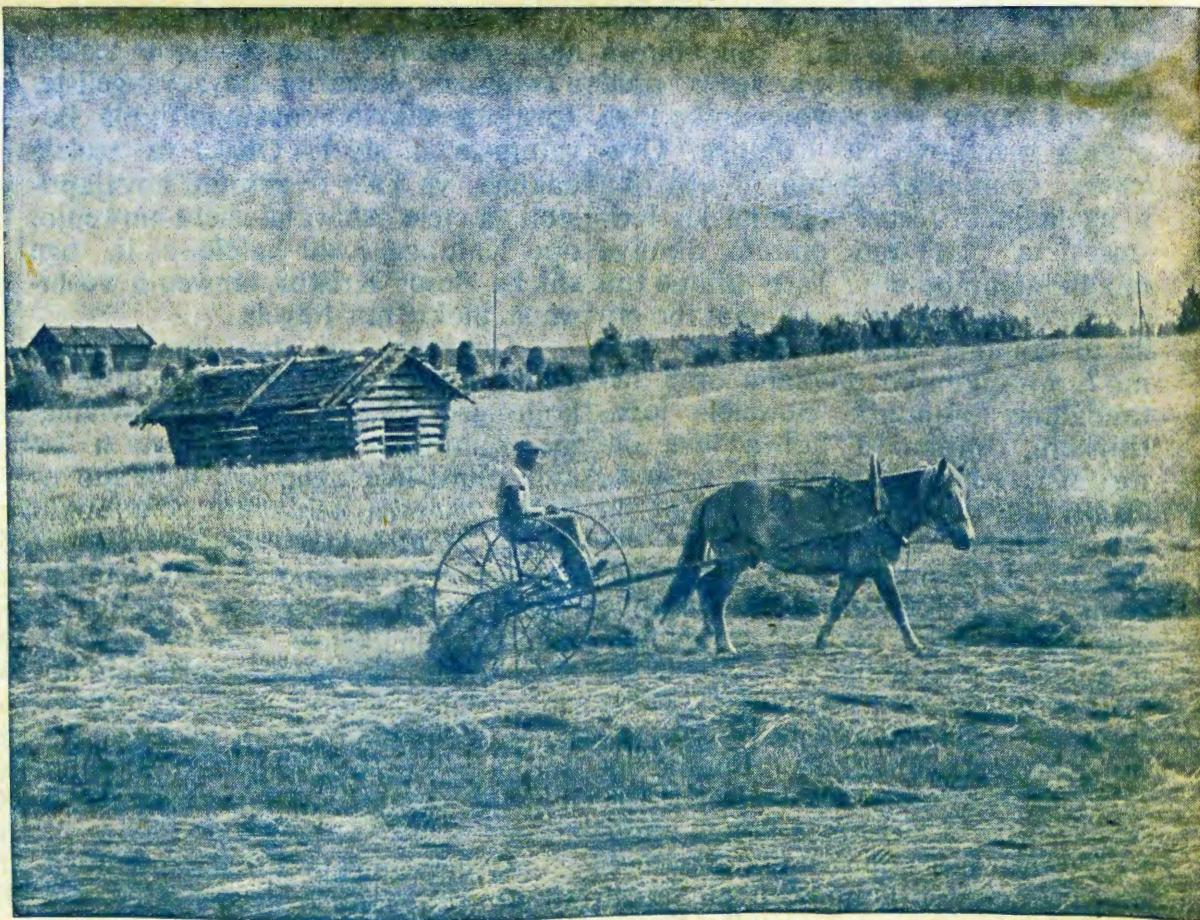
longa shomokati kaagundjuka otashi talwa nomeho omanene. Oitaali naa huwiya otaa ende nga mondjila ya thinana. Omaudhigu oge li mumwe nomayambeko.

Itandi dhimbwa okupandula ETUMO lya Suomi Nepangelo lya Suomi sho lya zimindje ndi fale omakundo getu kaavali yetu oyo ookume kEtumo. Eti 8 Juli olyo nda thiki mevi lya vala aawambo. Onda taambwa nenyanyu kaawambo aakwetu mbe-yaka nokookuume ketumo ayehe. Tango nda taambwa megumbo lyaawambo ndyoka hali ithanwa egumbo lyetumo. (ongulu yEtumo)

SUOMI shoopala shili noonkondo. Eshito lyaKalunga olyoopala shili li vule omaopaleko gaantu. Omiti omile, odho omagano gevi. Omatale nago ogendji noonkondo gevule po 60,000. Omilonga ominene tadhi enditha omiti. Iilongwa mo oyindji. Omapya taga longwa nawa. Otaga gandja iikulya yomaludhi ogendji. Iimuna yina oongulu oombwanawa. Oya pungulilwa omwidhi moongulu. Otayi gandja omahini ga gwana. Iilando oyoopalekwa shili nawa.

Aakuluntu yoku Suomi muyo tandi tumbula omukuluntutumi omus. O. Vuorela; osho wo aatumwa ya li mOwambo, naayenda ha yetu talele po, noongundu dhookume kEtumo, otaa dhiladhila oyana nohole ya hwama nomagalikaneno gaana ezimbuko.

Ohole yoshilonga shetumo momagongalo ogendji mu Suomi tayi holola uunene wesilohenda lya Kalunga oku hola naawambo wo. Aagundjuka aasuomi oyo oshiho-lelwa oshivanawa miilonga nomohole yoshi-



Osho ngeyi aasoomi taa mu omwidhi

OKA ANDJETU

longa shEtumo. Oongalo omolu oshilonga shetumo otadhi holola aakriste nkene ya koka miilonga ya Kalunga.

Oku na oongundu dhomagalikano. Tadhi galikanene aatumwa, oshilonga shetumo, osho wo okugalikanenathana mokati kawo. Nomolwadho wo omayambeko ogendji momapya getumo naatumwa otaa vulu oku kala ko, oshoka taa galikanenwa aluhe.

Aantu moshilongo taa silwa nawa oshimpwiyu kolutu nokomwenyo. Aakulupe taa yakulwa nawa. Oombolo oye na oosikola dhawo, naasita yawo. Otaa uvithilwa, niikaha no taa tala ashike omandhindhiliko. Nayo oya longwa nawa otaa kundathana nawa, sho taa longitha iikaha yawo. Aaposi wo taa lesa niikaha ya ningilwa oondanda dhawo nayo ya kwathwe komwenyo. Oothigwa tadhi tonatelwa nawa. Omaendo goopala ga fa iikunino yoongala. Oombila tadhi opalekwa ethimbo alihe, notadhi tulwa oongala aluhe.

Oosikola adhihe pagongalo tadhi dhigininwa nawa. Oosikola dhosoondaha otadhi talwa nomeho omanene. Aalongi oyo nga aasamane aakulukadhi, aakadhona, naamati yanakatepa. Aanona taa putudhwa ya kale ye hole oohapu dha Kalunga NETUMO manga aashuushuu.

Suomi evi lya vala aawambo naakavango. Onkee omuwambo e li mu Suomi oku li megumbo lyaandjawa avalwa mo, na aluhe oku uvite "ondi li megumbo lyetu" Mokutala shoka twa pewa kashi shi kudhinwa nando.

Sho tandi landula oshinkoti shandje momadhiladhilo, ondi lwete uwanawa nda ningilwa kOmuwa. Osho ehupitho miiponga yokolutu noyokomuhenyo. Onke esilohenda lya Kalunga lya ningi enenenene kungame wo. Onke otse negumbo lyandje tatu ti: "Omuenyo guandje hambelela Omuwa ngoye ino dhimbwa uwanawa washa e u ku ningila."

KLEOPAS DUMENI

IILONGA YOOMBEP OOMBWILAYI KAYI NA WE OONKONDO.

Itatu kondjitha onyama nombinzi ashike, awe, aapangeli yuuyuni womilema mbuka wo. Ngashi mwa yangele nale mudho pamukalo guuyuni, ngashingeyi mwa ningi aantu aape. Natu dhimbulukwe, omutondi gwetu te ende aluhe okumakela aantu yomuKalunga, e ya yone po.

1 Petr. 5:8.

Otu kale twa kola meitaalo, omutondi kaa mone ompito oku tu ninagula po. Oshikandekitho shetu Jesus Kristus, omunamwenyo. Oye te tu gamene ngele tatu matukile kuye.

Johannes Eliakim,
Swakopmund.

JANUALI

1. OMUMVO OMUPE.

Joh.6:37-40. Luk.2:21.

Gal. 3:23-29.

2. W. Luk.4:16-21. Mat.4:12-17.
3. Do. Jes.43:16-29. Mat.4:18-25.
4. V. Jos.1:1-9. Mat.5:1-12.
5. Sa. Jak.4:13-17. Mat.5:13-16.

6. ESIKU LYAAPAGANI.

Mat.3:13-17. Mat.2:1-12.

Jes.60:1-6.

7. M. 1Tess.5:5-11. Mat.5:17-20.
8. D. Ef.5:8-14. Mat.5:21-26.
9. W. 1Joh.2:7-11. Mat.5:27-32.
10. Do. 1Joh.1:5-10. Mat.5:33-37.
11. V. Joh.3:16-21. Mat.5:38-48.
12. Sa. 1Joh.2:12-17. Mat.6:1-4,16-18.

13. S. Os. 1 ya landula Esiku lyaapagani

Mat.11:25-30. Luk.2:41-52.

Rom.12:1-6.

14. M. Mark.1:1-8. Mat.6:5-15.
15. D. Mark.1:9-15. Mat.6:19-23.
16. W. Joh.1:35-42. Mat.6:24-34.
17. Do. Mat.4:12-17. Mat.7:1-6.
18. V. Hebr.2:14-18. Mat.7:7-11.
19. Sa. Joh.5:19-24. Mat.7:12-23.

20. S. Os. 2 ya landula Esiku lyaapagani.

Jes.61:1-3.10.11. Joh.2:1-11.

Rom.12:6-16.

21. M. Mark.2:18-22. Mat.7:24-29.
22. D. 2Mos.20:1-17. Mat.8:1-13.
23. W. Mika 6:6-9. Mat.8:14-22.
24. Do. 5Mos.4:5-13. Mat.8:23-34.
25. V. Joh.1:15-18. Mat.9:1-8.
26. Sa. Iil.7:35-40,51-53. Mat.9:9-17.

27. S. Os. 3 ya landula Esiku lyaapagani.

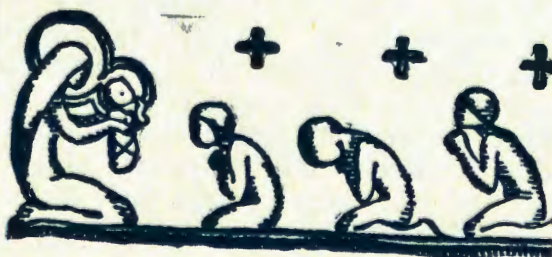
Joh.4:5-14. Mat.8:1-13.

Rom.12:17-21.

28. M. Jes.19:19-25. Mat.9:18-26.
29. D. Ef.3:1-12. Mat.9:27-38.
30. W. Joh.4:4-14. Mat.10:1-15.
31. Do. Joh.4:27-42. Mat.10:16-33.

ONDJALULAMASIKU

ya holoka notayi landwa 5c. (-/6). Omboka haye yi landitha, noitaa mana po pamwe adhihe, ye noku dhi shunitha koStora yoMambo koNiipa omwedhi gwa Febuluali manga inagu pwa po. nenge ye nokufuta po uumbo auhe ye u taamba.



ENONGELO LEENHUMWAFO.

Enongelo leenhumwafo kEngela otali tambula natango ovalongwa vape. Keshe tuu ou wa hala okukonakona Ombimbeli yoye, tu tumina edina (adres) loye, opo tu ku tumine onhumwafo oyo tai ku kwafa oku i konakona.

Mekonakono omo to ka mona shihapu uhe shi kwete paife. Osheshi vahapu ava ve li nale menongelo eli leenhumwafo, ove tu shangela eembilive mu yadi omapandulo nomahambelelo omolu ekwafo olo ve li mona meenhumwafo. Naave yo oto ka mona ekwafo eli.

Naave ou wa li wa tambulwa nale menongelo omu, ndele wa efa ondjilakati, ito twikile vali? Tu tumina hano onomeli yoye yombilive oyo wa huuninwa nayo, no nenge ito shiiva onomeli, ile ombilive ya kana, tu lombwela owa hulila moshipandi shilipipo, opo u hovele vali pehovelu. Hano tuma diva oadresi yoye.

Oshipandi keshe oshi na eenhumwafo 8 no tashi futwa 2/6 ile 25c kOwambo, kOushimba 3/6 ile 35c. Oadresi yenongelo leenhumwafo oyo:

Enongelo leenhumwafo,

Engela,

Pk. Oshikango.

S. W. A.

Ohatu mu halele okrismesa iwa nepuniko la Kalunga.

Omuyakuli meenhumwafo,
Aili Muatotele.



NDA TEGELELA OKRISMESA

Iituthi iinene yomumvo gwongerki oyo, oKrisimesa, Eso nEyuumuko lyOmukulil (Paasa) (Elondo lyOmukulili) na Pentekoste. Ngashingeyi momumvo nguka 1962, onda dhana ko iituthi itatu. Ngashingeyi onda tegalela oKrisimesa. Moku yi tega onda hala ndi ilongekidhe manga kuyelee opo Kalunga ngele ota adhitha ndje ko, ndi adhike nde yi tegelela nonde yi ilongekidha nawa.

Moku yi tega ondi na omadhiladhilo nga: Otandi yekelele okuninga ashihe tandi shi vulu opo aanegumbo lyandje ndi ya nyanyudhe moKrisimesa. Ookuume kandje otandi ya tumine omagano nomahalelo omawanawa ga Krisimesa. Aashiinda shandje otandi tala nga sho tandi ningi manga kuyelee. Otandi inekele mbika shaa nde yi longekidha nawa kuyelee enyanyu otatu ke li mona lyuudhilila moKrisimesa tayi ya.

Sigo ompaka otandi ipula, ngiika opuwo ndishi? Ondi uvite nga ndafa inandi mana, oshike ando shaapo? Sho nda ti, aanegumbo lyandje otandi ya nyanyudha, onda dhiladhila nga iinima oyindji yontumba noyongandi. Okuume, naashinda ota-

ndi ya dhimbulukwa nga nawa, onda fa tuu nda mana. Osho ndi ipula momwenyo gwandje.

Ondi ipula ishewe, OKrisimesa ohayi tameke unake ano? Onde shi dhimbulukwa ohayi tameke mosondaha yotango ya Adventi. Onda tala ootekisti ndhoka pakalindeli kutya otadhi popi shike.

Mudho onda adha mo omadhiladhilo nga: "Omuwa" "Ilongekidheni". Moondjimbo dhimwe omu na omapulo, "Ndi mu tsakaneke ngiini?" Onda tala ootekisti dha Krisimesa. Otadhi popi: uyelele weya, nenyanyu. Ihe tango opwa li omilema, ondjoko, uudhigu. Omutenge sho gwa teka, uudhigu wa kuthwa po, uyelele wa holoka nena opo ihe enyanyu tali landula. Yamwe ya mono tango okanona, opo ihe taa hambelele. Inaa hambelele nokunyanyukwa sho yu uvu, ihe oya nyanyukwa sho ya mono okanona Jesus. Omadhiladhilo omanene nomawanawa ogo ehala lya Kalunga okuhupitha uuyuni. Sigo ompaka inandi dhimbulula nando otekisti yimwe mu Adventi nenge mwa ndhoka dha Krisimesa tayi popi yu ukilila eilongekidho ndyoka nda popi tango sho nda tegelela oKrisimesa.

Onda tala ombinga onkwawo, nokudhiladhila kutya, ootekisti ndhika otadhi lombwele ndje kutya, uudhigu tau kuthwa po tango, ondjoko yina okuteywa, okanona taka monika tango opo ihe enyanyu tali holoka. nOhambelelo taga kala guudhilila, na ndika olyo ehala lya Kalunga lyokuhupitha uuyuni. Ngashingeyi onda yelee kutya, shaa ndi na omilema meni, nomitenge, nomaudhigu gi ili no gi li na inandi mona na tango okanona Jesus enyanyu ndyoka tandi lalakanene kandi li na. Oondjo dhina okudhimwa po tango opo enyanyu neyambeko lya shili tali landula.

Ngashingeyi otandi lundulula omadhiladhilo gandje meilongekidho lyandje, opo ndi tameke neilongekidho pa ootekiste ndhoka, ngame ndi landulithe ko ihe ndhiya nda popi tango. Oshoka nalyo ondi wete oli li mondjila notali pumbiwa wo. Onda hala okwilongekidha ngeyi:

Otandi tameke ngashingeyi okutega "Omuwa te ya." Uudhigu wandje, nomitenge dhoondjo dhandje otandi yi nadho ku Jesus nena. Onda hala okuninginitha omuntu nguka omukulu mu ngame esiku kehe okeitedhululo nokegundjilo. Inandi hala ndi tege 2 Desember 1962.

Onda hala okutega Omuwa esiku, nehimbo kehe. Nena ondi shi shi ihe shili kutya, Omuwa ngele te ya moKrisimesa otandi ka pewa enyanyu neyambeko lya shili pamwe naamboka taa adhika ya yogo eiuvo lyawo kiilonga yeso. Na ondi uvite ihe ndi na okuhambelela Jesus Omuhupithi ngoka a tula oompadhi dhandje mondjila yomwenyo noyombili.

Ooyakwetu otandi ya halele ihe enyanyu lya shili ndi li na. Ha iitya yowala. Otandi tegelele oKrisimesa mu yo ndi pewe enyanyu lya shili, nehulitho lyayo elalekonuuyamba lya shili. OKrisimesa ngele ya piti oshowo nda hala okwilongekidhila, nokutega iituthi iikwawo yomumvo gwongerki. Opo oshituthi shandje sha hugunina shi adhendje nde shi tegelela. Ndi pewe enyanyu mushoshene, neyambeko pehulilo lyasho.

Kuume kandje, ngoye ino hala tu tegelele oKrisimesa pailongekidho ndika. Onda tegelela oKrisimesa.

K. Dumeni

"NDA HALA YA KALE
NKOKA NDI LI."

Jesus okwe ya muuyuni a teyagule po oonkondo dha Satana. Oye no ina nyengwa molugodhi nduka, nando olwo lwa li oludhigu sigo oye mwene aa le a limbililwe sho kwa ti: "Kalunga kandje, Kalunga kandje, oshike we ekelehi ndje?" "Oye pokuhulitha a ti wo: "Sha longwa sha pwa!" No manga ku li pelaleko lyaalongwa oye okwa popi ngashi omuwa a lala oshilongo she ta ti: "Ongame nda pewa epangelo alihe no megulu no kombanda yeve." Oye a pewa shili oonkondo adhihe, kape nomwene gwadho gulwe.

Nale ndjiyaka manga aalongwa ye li pamwe naye, aana ya Sebedeus ye mu indile ya pewe omaha gesimano lye, gumwe kolulyo nomukwawo kolumoho lwe. Na yina gwawo a hala oyana ya pewe uulenga mboka.

Oohapu dhesiku lyokulala oshilongo shegulu tadhi ti: Jesus okwa hala aalongwa ye ya kale mpoka oye mwene kwa kala. Okwa kala peni? Itatu hempulula; nokwa kamutumba kolulyo lwa Kalunga, Ohe omunankondo awike." Nomoo-hapu ndhika oye ota ti: "Opo ya tale eadhimo lyandje we li pa ndje." Ano esimano lyopombanda kali shi kuyelekwa nando koondunge dhaantu. Nenge ngashi pepangulo aantu ye taa lombwelwa komukwaniilwa: "One aayambekwa ya Tate, ile ni mu ka taambe oshilongo shika mwe shi longelwa opeshito lyuuyuni. "Mat. 25:35. Otaa lombwelwa ya lale oshilongo shiyaka Kalunga e shi ya longele mu Jesus opethimbo tuu ndyoka okuza keshito lyuuyuni sigo kesiku ndyoka taye shi pewa. Oshe ya longekidhilwa ya kale musho pamwe nofule ndjoka okwe shi ya kondjele, sho kwa nyanyagula omutse gweyoka.

Koonkondo dhomwene gwomilema uu yuni wa li we ya tondo manga ya li kombanda yeve. Ihe, oyo sho ya tseyika kOmuwa no ku He, oya li ye holike wo kuye. Ohole tuu ndjoka tayi ka kala na nkoka Jesus ta kala nayo, uutondwe wuuyuni itau adha ko. Kaku na nando sha tashi ya limbilike. Oyo yu uvitathane nawa nomwene gwawo, oyo ookuume ke, oyo aakwawo, oyo aakwezimo ye mepangelo lyoshilongo shesimano lyaluhe.

Uuyuni auhe, unene owo mbuka wongashingeyi owo womalunduluko ogendji. Aapangeli yuuyuni, na mboka yi itala ya kamutumba nawa kolukalo lwepangelo lya wo haa tidhwa ko, haa shundulwa, no taa ningi aatokele. Niilongo yawo hayi tendwa kaanankondo ye ya vule. Ihe Jesus sho kwa kamutumba kolukalo lwe kolulyo lwa He, ita tidhwa ko. Nolwo italu tenguka wo nando nali yonwe netango nando nali tope, olwo lwa kola aluhe. Moshilongo she-itashi hulupo, osho tashi kala aluheluhe. Ongoye ngele u li muJesus u li po wa kola, ngele ku mo muye, u li po wa fetutu hali hingwa kombepo. Ngele u li muye, ino tila uutondwe womuuyuni ohole ya Kalunga ye ku gwanene.

Omukwetu, ou na tuu omuhokololi ngoka meni momwenyo gwoye?

M. Tonata Kapula.



EHAFO LA JESUS

Luk. 10:21-22; Mat.11:25-27, Ehambelelo Jesus ta hambelele He, "Hai ku hambelele, Tate, Omuene ueulu nouedu," otali hoolola kutja Jesus okua li a hafa mOmhepo Ijapuki. Ehafo linnenene Jesus a hafe-la He eshi a holeka ovanongo novanaeendunge, nde te i hololela ovo va fa ounona. Jesus okua pandula unene He okue shi tala sha uapalela He.

Heno, oshilongo sha Kalunga shi he na ehafo lovanongo novanaeendunge dounjuni ou. Omutumua munene Paulus ota kuenene ovanongo. Tala 1Kor. 1:19-23. Ounongo ou li pavalu: ounongo uopaunjuni nounongo uokombada. Ondi udite alushe momanjolo ovamati ovauambo ve li moilonga javo mOushimba, ovo va kua-tua kouladi uopaitavelo okuitavela Jesus Kristus, Omuhupifi uounjuni. Omoluokunjolela Omukuetu kOnaipa oto shi didilike naua, ovamati inava longua meefikola ngashi ounjuni ua longua, nokutja, kave na ouino unene, ndelene Jesus Kristus aeke, ve na elalakano a tambulue kovaleshi vOmukuetu.

Na apa jo Jesus ota hambelele Kalunga He ou a holeka ovanaeendunge dounjuni ou eitavelo okuitavala Kalunga kashili nOmukulili uetu. Ohai pandula Kalunga omoluovamati ava

tava shangele kOmukuetu ve na ouladi uapuki eshi va tala ashike Jesus Kristus oje aeke Omuhupifi uovalunde. Ovo tava itavele oulai uomushijakano ngashi omujapostoli Paulus ta ti mu 1Kor. 1:23-31.

Taleni ovamati ovamatate mu Kristus Jesus, kaleni ngashi mua ifanua kOmuhupifi mouhupi ueni. Kalunga e hole ovalihupipiki, oshilongo sha Kalunga oshavo tava ende meitavelo nomelihupipiko. Tala 1Petr. 5:5-6. Kalunga mu Jesus Kristus oje ne mu file oshisho moluendo lueni lueitavelo opo mu fikifue keenghono deendjovo daje, 1Petr. 1:22-24. Shaa tuu ouladi neitavelo leni tali luile mu-Jesus amuke, mu na efindano lehupifo. Tala eendjovo edi Joh. 15: 4-11.

Ovamati ovaholike, itaveleni evangelii, osheshi olo eenghono da Kalunga, omo to mono ounjenje uekulilo loje. Kandukeni keemhepo da njata, nje mu limangeleke kuJesus, Omupifi uounjuni.

Omukuanjama uonale oje a tumhaleka ovamati unene ta ti: ngenge to pindi ovamati u pa mo tete, osheshi ohava endebele va fa oikuti jokomhindo. Ovamati ovo va li muKristus na va tumhalekue meitavelo la shili. Omajeletumbulo 1:7-9. Omuene ne mu nangeke nouputa muJesus Kristus, Omuhupifi uounjuni.

Wilho Kaulinge.

OSHIKOLOLO SHAAGUNDJUKA

OSHIGONGI SHAAGUNDJUKA YONGERKI AYIHE MENGELA.

Olye ngo tandi mu tumu?

Mesiku 30 lya Auguste sigo 2 lya September meNgela omwa ningwa oshigongi sha simana, oshoka aagundjuka yomagongalo agehe gomoWambo nogokokavango ya gongala moshigongi shawo shotango okukala pamwe. Ehangano ndika lyaagundjuka olya li shili ewanawa, aagundjuka sho ya tseyathana, nokasha li ashike emonathano lyiipala, awe, unene sho ya hangana mu Kristus Jesus, ehanganano lyopamwenyo, ya kale mekondjo lyesiku kehe.

Inandi tseyana nawa, omadhiladhilo gaantu aasimanekwa, mboka ya longekidha oshigongi shaagundjuka. Ndele mokupulakena aapopi ayehe ya li ye na ipopiwa, onda mono nga oshilalakanenwa shawo, osho okupe-ndulila oomwenyo dhaagundjuka, opo ya longele oMuwa nenyanyu.

Omuwilikingerki L. Auala sho a kundu aayenda yoshituthi, okwa lesha mEpsalmi 110:3. Okwa dhiginine unene omatumbulo ngaka taga ti: "Omeopalo lyuuyapuki woye aagundjuka yoye otaye ku andukile ngashi omuume mekolo lyeluwa". Ano elalakano lyaapopi nekundo lyOmuwilikingerki olya tsa kummwe nelaka ndika tali ti: ayehe mboka taa inekele oMuwa, otaa pewa oonkondo oompe.

Omolwomadhiladhilo ga li moomwenyo dhaavuthi, sho ya popi medhina lyoMuwa, oMuwa ine ya sitha ohoni. Okwa pendula moomwenyo dhaagundjuka aamati noontanadhanamutili, ayehe ya pewa sha. Moomwenyo mwa kunwa sha, shoka inashi sila mo, sha mene ethimbo tuu ndyoka. Ya tokola nokuli etokolo enene, ya hala okulongela oMuwa gwawo miilonga yawo yomake, emona lyawo, omalutu gawo nokuli, oshoka yamwe yomuyo ya gandja omalutu gawo moshilonga shetumo.

Oshigongi osha li shi na eyambeko enene. Kalunga omupenduli gwehalo nohokwe iilonga ye yi gwanithwe, oye mwene a pendula ehalo moomwenyo dhaagundjuka.

Enyanyu lya li enene shili, ndyoka nda mono miipala yaagundjuka. Na hamiipala ashike nde li mono, awe, onde li mono miyimati yiilonga yawo. Oomboka ya za kiilongo yokokule, oyo unene nda mono iiyimati yawo, oshoka sho ya zi kiilongo yawo, inaya tseyana kutya, otaku ningwa omalanditho po giinima omolwoshilonga shetumo. Ano mbaka oya kambadhala okwilandela sha, opo ye shi tule mongalo yetumo. Ngame nda kala omuyakuli mokulombwela mboka inaa mona sha shokulanda, ya gandje ashike iimaliwa. Osho ya ningi ya gandja iimaliwa, inaye yi tula moondjato, awe, ya gandja ngaashi oomwenyo dhawo tadhhi ya lombwele. Shika ashike otashi ti: moshigongi omwa li oomwenyo dha papudhukila oshilonga shetumo.

Aagundjuka oya li ya topolwa oongundu, opo ya kundathane shoka ye na okuninga mokulongela oMuwa. Oya kundathana no sho ya mana oonkundathana, nena aanyoleli yoongundu oya eta omatokolo no inaku monika epingathano momatokolo. Oya li ye na omutima gumwe nedhildhilo limwe.

Ongundu yaagundjuka oya tokola nokuli ya kale noshiketha shawo, nedhina lyasho "Oshiketha shetumo lyaagundjuka." Aagundjuka oya li ya hwama mokwimba nomokuhokolola omahokololo gawo, oya li ya suulaadhi okwiimbila Omuwa gwawo.

Opwa ningwa oshinima oshinene tashi holola kutya aagundjuka ya hala okutaalela oMuwa. Omuwilikingerki Tatekulu Auala okwa tula omapandela agehe koshiyambelo shoMuwa noga kala ko omutenya nuusiku. Tashi ti: aagundjuka ye nokukala koshipala shoMuwa omutenya nuusiku.

Kalunga na hambelelwe, oye mwenemwene sho a pendula noohapu dhe ehalo maanyasha yongerki yetu oku mu longela. Kalunga na kwathe oshilonga shika e shi tameka, shaa dhimwe mo moomwenyo koshidhimitho sha satana, ngu omukumuni gwetungo lyuuwanawa moomwenyo dhaantu.

Lasarus Katoma.



EIHOLOLO LYA JESUS.

Mark. 16:14-30.

Konima yeyumuko lya Jesus, oye ini ihololela aantu oyendji oshita. Naalongwa ye yoyene ine ya holokela mbala manga ye li po ongundu ayihe.

Osho wo momapipi ngaka getu Omuwa Jesus oti ihololele oogumwe noogumwe, ngele tatu tala okuholoka kwevangeli. Tatu vulu okutya, eihololo lya Jesus maawambo okuza omumvo 1870 otatu mono aantu oogumwe noogumwe taa mono Jesus, ihe ehalo lya Jesus oyo tuu ndika a monike ku ayehe, ngele aatumwa, aahiye nenge aaitani yaamboka inaa mona Jesus. Oshoka Jesus mwene ine ya etha, manga ine ya pa oshilonga. Wa mono tuu Jesus?

Omboka ya yi kombila okutala omudhimba gwa Jesus, oya galuka ko aatumwa ya Jesus, okuhokolola eyumuko lye. Oyo oya li inaa itaala oohapu dha Jesus. Luk. 18:33. ; Mark. 10:34. ; Mat 29:19.

Okwaaitaala kwawo ku nefano enene mongundu yetu. Nando tatu mono aatumwa ya Jesus, oku na oyendji mboka taa kambadhala okumonena oomwenyo dhawo ukulila muuyuni muka. Okwitaala kwawo kaku po nokuli. Omupangeli gwaayihe okwa uvaneke okukala pamwe naatumwa ye. Oshilonga oshinene shaatumwa okuuvitha evangeli lya Jesus. Ngaashi ekulilo lyaashi lya gumwe, osho wo evangeli itali uvithilwa yamwe, ihe aantu ayehe. Miilonga mbika yetu yaawambo evangeli lya uvithilwa omuntu kehe. Omuntu mwene ta tegelelwa a taambe, ye i itaale evangeli, opo a ninge omuhupithwa.

OSHIKOLOLO SHEGUMBO

AAKWATHI YAWO OOLYE?

Tangotango aakuluntu ye. Oyo ye li naye aluhe noye mu tseyana. Andola aakuluntu ya igilile okukundathana noyana komayono gawo. Omugundjuka nguka a fa oshiyuma oshinenguni megumbo, shaa ngoka e noku shi kwata noshiho.

Otwa ti nale omunona gwepipi ndika ta limbililwa aantu ayehe. Eeno shili, ihe e na wo tuu ookuume aawanawa naainekelwa. Olwindji ti ikongele ookuume ye mu vule mokuvalwa nomesimano. Ongele omunongeki gwe, nenge yalwe. Opo mpoka ti imonene aakwathi aanandunge. Ano tatu ti: aakwathi ye oyo aakuluntu ye nookuume ke naanongeki ye, n. sh. t.

Mpaka twa tumbula ongondu onene yaakwathi, ihe ha ayehe taa longitha ompito ndjika. Shika otashi zi mpoka, sho yamwe inaa lola uudhigu wepipi ndika, nenge inaa yelwa kuwo. Oshiyuma oshinenguni oye shi kwata noye shi kwatele nokwaayawala, sigo sha tatuka. Osho omukulu gwonale okwa ti wo: "U li konima yesiga ku shi uupyu womulilo." Ano omukwathi omunene moshinima shika oye ngoka a makele shili uudhigu wepipi ndika nokwa mono ekwatho ewanawa, nenge u uviteko nando ineu lola ye mwene.

ONDJELO YA KALUNGA MUTSE.

Kalunga okwa shiti omuntu oshifetha she mwene, ihe mokuyona kwomuntu ondjelo ya Kalunga oya zi mo muye. Ihe natango Kalunga ine etha okukonga omuntu, onkene okwa tumu oMuwana omuholike, opo a hupithe omuntu mokuyona kwe. Osho omuntu molwesilohenda okwa mono ompito okugalukila ku-Kalunga.

Omukwetu, tu dhimbulukweni esilohenda ndika. Natango mpaka tapu pumbiwa eitaalo okwiitaala oMuna gwa Kalunga, Jesus Kristus, onguka a gwanitha ehala lya Tate Kalunga Leshu Joh.15:1-5. Eithano ndika tali longo nomutse tu galukile kuTate, ano kokutya, tu itaale oohapu dhoMuwana, tu vulike kudho. Nena na tse wo tatu ningi oyana notatu pewa ondjelo ya Kalunga notatu thigulula pamwe na Jesus Kristus omwenyo gwa aluhe.

Omukwetu, otse na ngoye otu li ngini noMuwana Tu mu kongeni notu mu taambeni manga ta monika.

A. K. Absalom.



IILONGA YIIKAHA

Aalumentu aawambo nату kundathane ka-shona kombinga yoshinima shi noshilonga muuyuni auhe, ihe ihe mOwambo osha talwa oshihupulo komulamba, eeno, nasho osha pumbiwa. Ihe tala. oshilonga sha dhinika okulongitha omake getu. Ilunongo nuunkulungu twe u thigulula kookuku twe u kanitha. Momavi agehe gaanandunge otamu monika iilongwamo, ngashi muka mOwambo shi tu shi kwitangela shila omashungu noontungwa hadhi tungwa kaakadhona naakulukadhi. Ihe aalumentu, awe. Ngiik'oto ti: otatu tungu nee oontungwa tse aakulukadhi? Tala, ope na oyindji wa li u no. kulonga niikaha yoye yoshilumentu. Tala, opu niyala yokulala, ohavi landwa nokuli okuza pu 2s-5s, ihe we yi ethele natango aakulukadhi. Opu nomatenga gokukandela, haga hongwa miiti. Ngashingeyi ohamu kanditha omaemele giilumbu. Tala nee, eyemele moshawo shongombe. Oombiga dhomakaya, omatenga gokunwina mo, oofenya omatamba, omatiti gokwelelela omuhoka. Ngashingeyi omwa hala uuyaha hau talaleke omahoka mbala. Oku na uunona hau hongwa miiti. Uudhila, noondjamba, uupundja, noongombe, aatiligane haa u hokwa, ando twa likola iimaliwa. Haatiligane ayeke haa u hokwa, ihe naawambo wo. Tala utale omihi, oodhimbo, omipini dhomakuya nodhomatemo, okuhongela oomwele. okuhambula omatemo, omagonga, omivi (omihengo). Aahambudhi oya yi peni? Tala, omatemo otamu landa, oomwele, dha hongwa otamu landa kiilumbu. Ne one mwa li mu yi shi. Oonkandja (eefipa) nomatati gogene niikuti yago otamu hala mu lande ngashingeyi. O! Iihuna shili nge to adha omuwambo, omuvalele mOwambo, to yi megumbo lye, ndele nuutati ngaa mbu wa nangongo owo nga kee na mo. Omwele, egonga ndiya kali popiwa nokuli. Nima ya nima omulumentu! Iiti yoye oyi li peni: Uuyuni wongolo inau et' ombili yuuhethi, yi tu ekelehithe naambyo twa li tu na. Iilonga nga mbi nda popi, ando ho yi longo ando ou niimaliwa yi thike peni? Oshi sith' ohoni nge to ka adhika konima yoomvula, ndele ku na nando oshithigululwalonga megumbo lloye. Omalanditho to adha mOwambo uuleke, uumbindja nuukeleketi waa fele, tau zi kUushimba wo ne ihau lwedha okutokith' omuntu, oshoka oho ka landa ashike moostora ngoye e to gwedha ko nee aniwa Is. 6d., ngoye wa adhele kwa gwedhwa nale komunastora. Ngeno wa li u na shimwe tashi eta po, ando e to ningi nee ongeshefa yoye ando ha po u li mpo u li ngashingeyi. Aakii-ntu wo! oombiga, omatiti geloya, uuyo uumbale weloya, oyendji ya etha nale. Tamu teke nomaemele kage nomitima. Okuteleka oomombiga dhomavi gaatiligane; dha pula iimaliwa oyindji. Ngeno wa hongele yoye neloya, ando iimaliwa wa landa nando olata yiipungu oomvula odha theta ngashingeyi. Oondunge dhoshigwana ohadhi hololwa kiilonga mbyo hashi longo. Sho ishewe aanona yetu konima yoomvula ethele itaa ka tseyawe ngele otwa li hatu vulu okulonga sha tashi kumitha, oshoka ayihe tatu adhika twe yi ekelahi, Tu humeni komeho pamukalo omwanawa, tu longitheni omagano twe ga pewa. Tu mone Owambo yi nuuyamba owindji we tu zile miihongomwa. Simaneka iilonga yookuku hanomakana ageke, ihe noku yi tsikila wo.

Tu dhiginine iilonga yiikaha,
Omuhongi gombiga kuthe eloya,
Omuhambudhi kok' ekuya.
Ngu opo to ya miilonga! longa nziya.
Thikameni tu yeni miilonga.
Opo wo tu simanekitheni Kalunga niikaha yetu.

Immanuel Iithete.



ONGUDI YOUPAANI.

Nekongo Shaanika okwa kala omutumba koshiti shaye shihupi, eengolo daye de loonya olukata, nokwa fa a diladila sha. Oye ta ehele omundilo nopomafimbo nomafimbo ta teya okatayi moshipandi shoikuni konima yaye note ka umbile momundilo. Oye omulumenhu a kola, komutuwe waye a djala embale lo-shipa shi he nolududi, ha unene omolwe eemhumbwe, ndelene ongoulenga. Kofingo kwa endjelela ouketi va nyanekelwa keendudu nokonhulo pokudya kepepe fiyo omonhwapa kwa kala ekwamo omo mwa tulwa omukonda mule u li moshilaleko shawo. Oye omunhu e nondjelo iwa yokoshipala, eyulu la wapala nomilungu ke dakula unene, omayoomawa matoka, oshipaoshilaula nosha wapala. Oye omunhu womofuka nde paife oku li omutumba neumbo laye noku udite ombili.

Omukulukadi waye--edina laye Kashinini -- ta teleke ouvalelo nota kembadala okuloolola okanona taka lili modikwa. Okwa li ku nokamhepo noke mu etela omwifimomesho. Onghe okwa li e nokulundulukila kombinga ikuawo a shiive okuteleka. Oye omukainhu mule, nolutu la wapala, oshipa shaye oshilaula shi dule shomulumenhu waye, konyala shilaula foko. Noye e nondjelo iwa yokoshipala. Oipa ivali yeenhana, oyo ya shikwa naua noya vaekwa nomadi oya endjelela moshiya nokuwanifa oshilonga shofulukweva. Komutwe waye kwa kala eehwiki dopashipaani, dimwe dile, dimwe dinini di fike pomunwe. Okwa ika nawa okulongifa oluko mokupilula oshifima mombia tai hale okutenguka kombada youfia vedu. Oshifima sha kula, sha pama nawa sha hangika sha pya nokuli.

Omukulukadi a utama - omukulupe nokuli - e uya kepata e noshimbale sha kulupa monghwapa yaye. Keemhandó daye kwa kala eengodo didyu divadima noipa yikula yeenhana ya endjelela moshiya.

Oye Katiti, ina yomukulukadi. Oye a mona onhele meumbo lomona noshitenya shaye. Okwa hengwa komlumenhu waye omutivali. Oye okwe mu taataa meumbo longhelo yaye. Okwa kala ha vele omaudu mahapu elili noelili omesho, onghe ina shiiva okumonako nawa. Ndelene natanngo tuu ta dulu okuliyuukifa nokunokulinyenga. Okwa petama a fa a konga sha pedu popepi nomudingililo nokwa kufa mefululu oshipa shikulu.

-“Hamba, apa nda mona ekutu likulu loufila laNekongo. Ohai ka kala omutumba kombada yalo” - osho a tonga noku li tula pedu popepi nomundilo.

-“Hamba, ola ekelwashi nola ola nokuli kodula” - Kashinini osho kwa tya.

-“Tala, okuulu oko kumwe ku yadi eheke, otaku yukilile ngashi omaulu aeshe ane a yukilila eshi a li e yadi oilya komapepe a Nekongo. Oto dimbulukwa ndi shii? - Katiti osho a tya.

-“Heno, ohai shi dimbulukwa. Oshipa osho oshoshikombo shotete sha shikwa ku Nekongo noye mwene okwe hondja ekutu. Okwe shi ninga naua. Ekutu olo la fa oshikombo shovene” - osho Kashinini e mu pandula.

-“Heno sho naa naa, ndelene, eshi hai tale oshimbale eshi, ondi wete osha kulupa unene” - Katiti osho a tya.

-“Heno osha kulupa shili. Ino shi vandeka vali.”

-“Ohai shi vandeka. Ohai nyengwa okutunga oshimbale shipe, osheshi kandi weteko naua. Ombado ayike oya dya ponhele yayo, ohandi i kwateke kumwe.”

-“Onhisho oi li peni?”

-“Eembale edi oda taafinwa. Ohai di hondjo ngahelipi noshisho.”

-“Onghumbo oyo inene we i mona peni?”

-“Onde i landa nena komunghambudi. Oyo oipalela, okwe i hambula paife eshi. Tala, oi neyulu linene.”

-“Oyo onghumboeela. Onda kumwa shili, omunhu eshi e shii okuhambula onghumbo i fike opo?”

-“Ohai shi kuminwa yo. “Okwa longwa kulyelye mbela?”

Taku twikilwa.

OUNJUNI OTAU TONGO SHIKE

OILONGO YA HANGANA



Omuwilikitumi Olavi Vuorela

Ote ya oku tu talela po ishewe, Omuwa ngele e shi hala, muApilili omumvo tagu ya. Okwa ithanenwa moshigongingerki komwilikingerki nokomukuluntutumwa, nokwa zimine, nando ku nomalongekidho ogendji goshigongi shoongerki adhihe onkwaluteri tashi gongala koSoomi omumvo tagu ya.

Omusamane Vuorela na efolo Vuorela oya li putse mpaka omomvo 1958. Okuza omumvo ngoka okwa holoka iinima oyindji iipe no mooskola no miipangelo, onkee kwa dhiladhilwa, onawa, omukuluntutumi ngele te ya okutala nokukundathana naaniimpwiyu mpaka.

KUBA

Ounyuni owa li popepi noita, ndelene oshiponga inashi ninga shi fike opo. Moshilongo sha Kuba shi li ponhunhu langhele ku Amerika omu nepangelo li noukaume novarusia ovakomuni. Ovarusia ova hovela okutunga eenhele da pama dokuumbila moilongo ya Amerika oikuti ya kula. Ndelene ovaamerika ove shi dimbuluka momafano va faneka meedila. Ovaamerika ova hovela okukelela eeskepa dovarusia odo di noikuti di ha fike koKuba. Eetundi heimwe (6) ounyuni aushe owa pwilikina, eeskepa ngenge tadi ke lipumha eshi tadi ka shakena, ndelene kwa udika kutya eeskepa dovarusia oda shuna.

Oilongo ya hangana oya onga-lele vali neudo moshongalele shavo, mongudu mwa wedelwa vali oilongo imwe. Oinima ihapu ya popiwa ngashi oudwali. Oilongo ihapu ya Asia no ya Afrika oya tokola kutya itava landa vali oinima ya Suid-Afrika no itava itavele eefikepa needila dasho di uye momadu avo. Oya li ya hala oilongo aishe i ye mo metokola olo ndelene oilongo ya kula ngashi England na Amerika noilongo ihapu ya Europa inai ya mo mulo.

OVATOKOLI VOIWANA

Etokolopangulo loiwana oli li koDen Haag kuHolland ola popya epangelo la Suidwes-Afrika. Tete pa pulwa ngenge li neenghono okutokola sha moshinima eshi. Ngenge tali tala kutya li neenghono odo, otali twikile pehulilo lomudo tau uya okukundafana oinima yovene. Oyo ohai ka pula efimbo lile.

Otenda jomeva moLindili.

MoLindili omua dikua otenda ja kula omo omeva mahapu taa ongelelua muSuidwes nosho ouua muhapu ua Suid-Afrika. Ojo oja ningilua omukangha u fike peefute 72.

Vahapu ove ile okutala ediko lotenda ei. Okua kala nale dimue nhatu di nounene ueegellinge 500,000. Ei ipe eegellinge 600,000.

Ediko lotenda ei otali ka futua R 30,000. Noimaliva ei otai ka longifua kepangelo. Opo i jadifue omeva otashi ningua oule ueemuedi hamano. Nefimano lajo oleli oLindili a mone omeva a uana.

INDIA

Meehani edi mwa kala omalwodi koumbanganhu wa India, oko ovakina ovakomuni va lala omikunda dihapu.

RODESIA

KoRodesia yokoumbanganhu okwa ningwa echoololo lotete lovakulunhu voshilongo pafinamhango lipe loshilongo. Ovadalelwamo ove li mo paife vahapu ve dule vonale mongudu yovakulunhu.

Ovamuameme ovaholike mu Kalunga efimbo eli tu li na paife, olo efimbo lii, osheshi la hala oku tu tula meemhofi dolunde. Onda fa ndi shi uete naanaa nge nge hai kufa embo lange noku leshe, ondu udite ounjengui momuenjo uange, nando embo li jadi omaudaneko maua. oMuene a hala tu a tameke noku a longifa, omaudaneko taa popi oMukulili nehupifo muje. Otu li po ngaha, tu kongeni omhito okumona oMukulili uetu. Tu kondjeni meilikanu nomuenjo u na elinekelo. Ou ta konghola, ota jeululua.

Nikanor Simon,
Tsumeb.

Jona A. Shafombadi, Portnollothe, ota kundile po ovakriste momaongalo aeshe neendjovo dokaaRom. 12 : 1 - 21. Ohandi halele ekuafu neameno tali di kuTate Kalunga notandi indile je a humife oshiuana shetu komesho novalongi va sho e va pe ouladi okutandavelifa evangeli.

August J. Shiindi, Transvaal, ota ti; Uwanawa woMuwa uunene shili. Oye omusita ta dhiginine oonzi dhe. Otwa taambwa kuye meshasho, ihe inatu inekeleni eshasho lyetu, olyo itali hupitha, ngele katu shi ngashingeyi oonzi dha Jesus. Ekoleko itali tu hupitha ngele itatu dhiginine shoka twe shi pewa, osho esilohenda lye. Gal. 2:20-21.

Willem S. Mungandjela, Walvisbaai, ota shanga ngaha: Omukengeleli ngele a hala okukuata cmunhu, ite uja alushe nehandu, ohe uja luhapu ngomunhu muua ngenge omuyengeli e noukaume nombili na fje. Tu indileni ounongo neenghono okusinda omahongaulo aje, tu kale meitavelo la kola.

Lukas Johannes Mulongo, Berg Aukas, ota shanga ngaha: Otua kala nehafo linene mefiku eti 8. 9. moluavakuetu ovo va shashua 8 nova kolekua 10. Ofjeni atuheni otua i koUlalelo Ujapuki. Ehafo letu kali shi ku paululua, oMuene sho okue tu jakula. Otua peua elombuelo eli: Limangele-ni kumue mu ha tejuje komunjelani. Otandi mu kundifa neendjovo di li mu Joh. 10: 11-16.

Walentin M. Katumbe, Walvisbaai, ota nyola ngeyi: Leshe tango Ps. 1:1-3. Jehova ota shiiva ondjila jovajuki, ndelene ondjila jovalunde tai hulu po. Omumuame-me omuholike, tu konge ondjila ei itai hulu po. Onda hala okuninga omukulunhu ota hepauula edina loMuene. Ohandi hala okuilikana, ovakounjuni aveshe va ude evangeli nova tambule ehupifo ve li etelua mefjo la Jesus nomohonde jaje idjuu. Omukuetu, ino fja ounje okudimbulukua ondjila jehupifo. Efimbo tali endebele. Lijandja koMuene uoje. Rom. 12: 1-8.

OTWA KANITHA

omumati aala uuvu gwoonkwengu a kana eti 9. 9. 1962. koKalongo. Ngoka wemu mona tuma elaka ku Titus Heita Nakayale Ombalantu. Edhina lyomumati oye Essa jAbraham Shililifa.

T Heita

OSKOLA YAAPANGI YOKONANDJOKWE

Oskola yaapangi yokoNandjokwe tayi ka taamba aalongwa aape omumvo tagu ya pethimbo tuu ndyoka ooskola adhihe tadhi ka tameka, tashi ti esiku **eti 22 lya Januari 1963**, Omuwa ngele e shi hala. Otaku taambwa aakadhona ya piti mongundu ya hugunina moskola yaakadhona, ye noomvula 19, uundjolowele uwanawa palutu nopamwenyo, oondunge nuudhiginini wokwilonga nokulonga. Ngele taa taambwa, otaa ka kala moskola oomvula mbali noomwedhi omugoyi opo taa ka nyola ekonakono lyu uthwa kEhangano lyAapangi yomuSuid - Afrika (Die SuidAfrikaanse Verpleegsterraad) mu Novemba, 1965.

Ngoka e nehalo lyokuya moskola yaapangi oye na tume koNandjokwe oombapila ndhika:

Ombapila yegongalo.

Eindilo lyokutaambwa moskola yaapangi.

Eihokololo keithano lye lyokuninga omupangi.

Onzapo ya hugunina yoskola yaakadhona.

Ombapila yondohotola.

Epopilo lyomusitagongalo nenge lyomukuluntu mpoka a zi ko.

Oombapila ndhika nadhi ye koNandjokwe mu Desemba, 1962.

Oadressi oyo tuu ndjika: Omukuluntu gwoskola yaapangi, oNandjokwe.

OMUKWETU

ta halele aaleshi ayehe
Krismesa ombwanawa
nOmumvo Omupe gu
neyambeko.



OOSKOLA MOMUMVO 1963

Ooskola otadhi tsikile oshilonga shadho, Omuwa ngele e shi hala, eti 22 lya Januari.



EHYO!

OMUNASHILONGA

Otatu pumbwa aalongi ya pita moseminari, aasamane nenge aamati nenge aalongikadhona, ya hala okulangekwa aakuluntu pomanongelo taga landula: ONAANDA (164), AFOTI (68), OMUSIMBOTI (45); okuza eti 22. 1. 1963.

Omaindilo nomapopilo gaalongi nenge gomatonatelonongelo, hoka omulongi ta zi, naga tuminwe kEpangelonongelo, Uukuangula, Uukuambi, manga eti 12. 12. 62 inaali thika andola. - Omolwopoosa otaga tegelelwa nгаа sigo Januari 18.

Tuma eyamukulo kEpangelonongelo, Uukuangula, Uukuambi Pk. Ondangua.



Olye a hala, a kale omulongi **KOKAOKO**; taku pumbiwa omulongi a pita mu Seminari? Eyamukulo nali tuminwe kEpangelongerki.

Nge wa hala okukwathwa mokukonakona Ombimbeli, nyolela ku

ENONGELO

LYOONTUMWAFO

ENGELA.

Oontumwafo 8 tadhi pula 25c. koWambo na 35c. kUushimba.

FINSE SENDENGDRUKKERY
OVAMBOLAND
ONIIPA