

# OMUKWETU

No 6.

JUNI

1961

## JESUS TA KONGO OMUKANI.

Joh. 8: 1-11.

Koshipala shomuhupifi, Jesus Kristus oku novañu vopavali, ovanongo vomikanda novafarisai nomualikadi a kuatua moluhaelo.

Omualikadi ou okua li e noushima u li poluhaela, fimbo ou uovango vomikanda novafarisai ua hondama momitima davo, noua hololua komaliudo avo eshi va toñenua oulunde uavo. Omatimba avo otaa holoka eshi ve uja moujelele uoshipala shOmuene.

Netumbulo eli, "ou uomokati keni ehe netimba ne mu kupule tete emanja." Jesus ota toño ovaeti vomunamatimba.

Osho nonena mokati ketu mu li. Ovanaimungu meongalo luhapu ohave litangele oshilonga shavo nokudina vamue ovo ve he na oshilonga sha sha meongalo. Jesus a hala fje tu likonakone naua fje tu lihepaulule ngenge tua toñenua oulunde uetu. Ou ta tale ashike oushima uamukua, je ihe litale muene, ita dulu okufjuulula ouhamba ua Kalunga. Jesus ota ti: "Oshike u uete okambodi ke li meisho lamukueni, omuti u li meisho loje ku u uete?" Jesus a hala fje tu likonakone, fje tu lipule, tu lidilulule nge hatu mono omatimba etu. Jesus ta ti: "Omunahelele ove, kufa mo tete omuti u li meisho loje, opone u tale ngenge to dulu okukufa mo okambodi ke li meisho lamukueni."

Omukuetu mu Kristus, Jesus ote tu hololele oungone noushima nomatimba etu ofje ava ovanashilonga mepja laje.

Fje ovanashilonga, tu nokulikonakona naua efiku keshe, osheshi ovañu vahapu otava tale ñumbi okukala kuetu ku li, opo ve lidilulule shili. Osheshi ke shiua no inashi juka ngenge fje hatu ka kana fje ava tu li po ovaudifivangeli. Ke shiua tu kale tua fomafano opeendjila taa ulike koima vo itaa i ko. Okua fikama ashike alushe poñele opo a dikua.



Omuene okua hala fje tu ka hupifue pamue novahongua novaudifilua vetu. Fje tu nokuekelashi ohoni ojo hai imbi omunashilonga e lidilulule. Osheshi Jesus ota hokua omitima detu ngenge di li po da njanjaulua, Eps. 34: 19.

Omukuetu ove ou u he na oshimungu sha sha meongalo, shiimba to ti u nokukala moukakombolilifa omo to hangua nonena kotekisti ei. To li ounjuni uoje u li moluhaelo nomoumbuada uoludi keshe. Ndi shi ovanaluhaelo paife ovahapu mokati ketu? Ovo otava kendabala ngaha okuuanifa ouhalu uomalutu avo. Ove, ove umue uomuvo ile ku fi uomongudu javo? Onaua ngenge ku fi umue uavo. Ndelene ngenge ove umue uavo, teelega, ngenge natango ito aluka mo moumbuada luhaelo uoje, otaku uja efiku limue mulo to ka dipaua nomamanja. Ino tja oshipango eshi shopaMoses osha pua ee-

ñgono. Inashi pua eeñgono, osheshi Jesus ine uja okudima po oipango, ndelene oku i uanifa; lesa Mat. 5: 17.

Ove ou umue ua uana okudipaua nomamanja ngashi hatu lesa 5 Mose 22: 22. Jesus ite ku pe oonongo ua sha, shapo oushima. Inda ndele ino njona vali; tala Joh. 5: 14; 8: 11.

Oua didilika tuu kutja moluhaelo omuhaeli ota kanifa ondjelo jolutu luaje, eshi ta kuatua komaudu e lili noku lili? Oua koneka tuu kutja oluhaelo otalu kaninififa omuenjo uoje?

Mokuuanifa oipango ja Kalunga ohatu limonene omalutu a pama nohatu hupifa eemuenjo detu. Tu tile hano Kalunga ou ta dipaa nope he na ou ta dulu okuhupifa osho sha dipaua ku Kalunga.

Gerhard Shañgeta.

## EGALIKANO LYONGULA



Juni 1961

**NOONDJUULUKWE DHEMONA-  
THANO OHADHI LONGO IIKU-  
MITHA.**

Ohole yuumwayinathana ohayi pendutha oondjuulukwe, noondjuulukwe mokukonga enyanyu lyemonathano ihadhi tila omaudhigu nando ga sha.

Mu Suomi nda dhimbulula ookuume kEtumo oyendjiyendji yokoombinga noombinga dhevi lyaasuomi ya kala omimvo odhindji ya yuulukwa okumona nomeho gawo oshigwana oshiholike kuyo, shoka ye shi kondjele omimvo 100 momagalikaneno nomoku shi iyambela.

Momumvo 1959 enyanyu lyawo lya li enenenene mokumona ompito ndjoka yokufala gumwe gwomoshigwana shoka sigo mu Suomi, opo aanelago yo mu Suomi ya mone ompito oku mu mona nomeho no ya mone ngaaka oshigwana ashihe mu ye.

Nuumvo 1961, ookuume kEtumo yaali aanelagolela, oya pewa pomasi-ku ngaka ompito okutalela po oshigwana shika shi holike ku yo. Ya kale pamwe na sho iiwike ine kOkavango no mOwambo nokUshimba wo. Oondjuulukwe dhawo dhomimvo odhindji sho dha yamukulwa ngeyi ndi shi enyanyu lyawo olyo enenenene.

Ondu uvite ashike olukeno omolwaawambo aakwetu yamwe mboka itaa mono ompito yokumona iipala yookuume ketu mboka, shila okulesha ashike miifo oonkundana ndhoka tadhhi ya popi notaye dhi popi.

Omolwa shike ano Memengerki yomu Suomi ta dhiginine ngaa aluhe okufuta iimaliwa oyindjiyindji molwomatalelathanopo ga tya ngeyi?

Otwa ti petameko, ohole yuumwayinathana ohayi pendutha oondjuulukwe, noondjuulukwe mokukonga enyanyu lyemonathano ihadhi tila omaudhigu nando ga sha. Oshoka ngele tatu dhiladhila: Memengerki opo a futu iimaliwa oyindjiyindji momalweendo ga Nangolo ku Europa, nokwi ilongekidha okufuta ishewe ashihe tashi pumbiwa momalweendo

Tate Omukwaaluhe gwomwenyo gwandje, kaleka omadhiladhilo gandje pu-ngoye, ehalo lyandje nali kale oku ku galikana noohapu dhandje nadhi tange edhina lyoye. Oshilonga shandje shotango nashi kale oku ku galikana nokutsa oongolo komeho goye:

omolu oondunge nuwanawa woye wa gwana waa na ondjele,  
omolu ohole yoye ndjoka u hole na yo aana yaantu,  
omolu ohole yoye ndjoka u hole ndje,  
omolu ompito yomwenyo gwandje onene tayi kumitha,  
omolu omagano ogendji gOmbepo yoye,  
omolu okukala kwOmbepo yoye momwenyo gwandje,  
omolu omagano gOmbepo yoye ogendji,  
otandi ku pandula noku ku galikana, Omuwa.

Ihe pa ndje ndaa dhiladhile kutya ekwatathano lyetu nangoye olya piti ngele egalikano ndika lyongula lya pu, nesiku tali kala ngashi ngoye ku po. Mokathimbo haka keimweneneno namu ze uuyeleele, enyanyu noonkondo ndhoka tadhhi kala pungame mootundi adhihe dhesiku.

opo ndi vule okukala omuyogoki momadhiladhilo gandje,  
opo ndi vule okukala omwishonopeki moohapu dhandje nondu  
udhe oshili,  
opo ndi vule okukala omwinekelwa nomudhiginini miilonga yandje,  
opo ndi vule okukala omwifupipiki momatokolo gandje,  
opo ndi vule okukala omuyuuki nomutima omupu moku ku hokolola pwaayehe,  
opo ndi kale omwinekelwa mokudhimbulukwa uuyapuki woye  
womathimbo ga piti nowomathimbo ngaka,  
opo ndi dhiladhile nkene te kala aluhe pungoye notandi kala nda  
gwana oshoka ongame omumwoye.

Kalunga, ongoye wa kala oshiholameno shootate noshomapipe ga piti, kala ngashingeyi oshiholameno shetu muudigu womathimbo getu agehe. Ongoye kala omuwiliki gwandje mwaayihe ya luudhila ndje naambyoka tayi vulu okulimbilika ndje. Kala omugameni gwandje mwaayihe, tayi nyateke elago lyomwenyo gwandje.

Kala onkondo dhandje momamakelo, nyanyudha omwenyo gwandje nombili yoye, omuJesus Kristus Omuwa gwandje. Amen.

(Elundululo lya G. Amupolo)

ga tatekulu Vilho Kaulinge ngoka a yi ku Suomi momwedhi nguka Mai. Ihe natango tuu Memengerki a hala okufuta omalweendo gaayenda yetu mbaka yaali ya zi ku Suomi; ko ku Suomi opo kwa zile iimaliwa oyindji yokukwatha ongerki yetu methimbo lyondjala.

Itatu ka adha eyamukulo lilwe, shila tatu ti ashike: Ohole ya Kristus ngele ya thiminike omwenyo nena oohapu dha Jesus ndhoka: "Itsikeni ondjoko yandje ne mu ilonge ndje, oshoka ongame omunambili nomomutima ondi ishonopeka; no tamu imonene omwenyo dheni evululuko. Oshoka ondjoko yandje ombwanawa, nomutenge gwandje omupu." Osho nge-

yi tadhhi fatulukile omwenyo gwo-muitaali.

Kalunga mwene okwa tseya nkene taku pumbiwa shili omatalelathanopo ga tya ngaaka; uunene ngaka ga mboka ye na omeho omawanawa okudhimbulula oompumbwe no ye na wo onkondo okuutha nokutokola omatokolo haga eta omayambeko.

Onke Kalunga na yambeke omatalelathanopo ngoka agehe ye na indjipalithe iiyimati mbyoka tayi ka imithwa ku go. Ombepo ya Kalunga yi ka thikithe iiyimati mbyoka nomayambeko ga yo no ku mboka wo inaa mona nomeho.

L. Auala.

## OÑANDA JOVAMATI

Momido edi mbali ovamatjona novamati ova ika okuongala koshiongalele shavo shomofuka. Oshiongalele shi li ngaha hatu shi luku pafupi: OÑANDA.

Eeñanda mbali oda ningua nokuli pomuñgenje uokOnguediva. Oñele ojo tua ongala mo tue i luka OUPUNDI omolua omukunda umue Oipundi u li popepi noñanda. Oñanda ojo Oupundi otai tu ifana vali neudo moshiongalele shajo shinene osho tashi ka ningua, Kalunga ngenge e shi hala, pehulilo laJuni na pehovelu laJuli. Neudo OUPUNDI tava tambula ovamati novamatjona aveshe ovo va diinina moiongalele jovamati ngalo. Tashi ti kutja keshe umue omumatjona ou a hala okuholoka KOUPUNDI na diinine ashike moiongalele javo.

### MOUPUNDI OHATU KA NINGA SHIKE HANO?

Oshinima shotete: Ohatu ke lilonga OMBIMBELI, opo tu mone OMUENJO UALUSHE, tashi ti kutja hatu ke lilonga okushikula Jesus Kristus Ohamba jetu. Osho jo hatu ke lilonga okujakulafana naua.

Oshinima oshitivali: Hatu ke lideula opo tu shiive oilonga imue jomake nosho jo opo tu kolekele omalutu etu moudano nomomafiafanepo e lili noku lili.

Oshinama oshititatu: mOupundi omu na neudo oshinima shinene vali. Osho OSHIVILO SHEJAPULO LONGERKI JOKOÑANDA. Omuiiliki-ngerki tate Nangolo Auala te uja olu li ninga, Kalunga ngenge e shi hala. Efiku olo linene olo eti 2 laJuli 1961. Oñanda jovene otai hovele mefiku eti 29 laJuni (metine loshivike) notai hulile mefiku eti 4 laJuli (metivali loshivike).

Oinima ojo hatu ke i pumbua kOupundi ojojo:

Ombibeli ile Etestamenti Lipe  
Omaimbilo  
Opena jokushanga  
Ombele ile omukonda  
Ekatana ile okakuva  
Oiti (oikuti, outa nodibo)  
Oufila uoshikundu  
Oimaliua jokuumba ongalo  
Embale leembale

Oinima tuu ojo to i pumbua shili keshefiku mokukala kuoje kOupundi. EPSALMI NEIMBILO LEJAPULO LONGERKI JOKOUPUNDI:

Epsalmi 84 neimbilo 255b nali longue naua manga efimbo loñanda inali fika. Epsalmi 84 overse jotete fijo onihetatu (8) oshitajingerki shomOukuanjama. Overse 9 fijo 13 oitajingerki shomOndonga noshOuninginino. Epsalmi neimbilo olo otali ka imbua notali ka hokololua moshivilo shinene shejapulo longerki jokoñanda.

Jaloo, Kalunga ne ku kuafe okulilongekida mokuholoka kOupundi nomokukala mo jo. Ombibeli tai popi omaluendo majapuki. Tai ti:

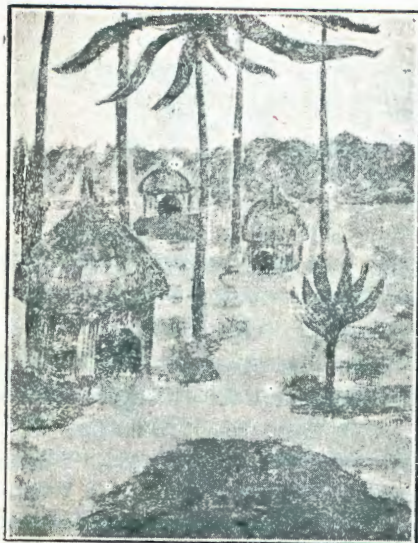
“Ovanelao ava ve neeñgono davo muOve mokudimbulukua omaluendo majapuki”. Eps. 84: 6.

Tu jeni hano kOupundi vetueni nokuilikana, opo tu mone eeñgono dipe muJesus, efiloñgenda laje nomuenjo ualushe.

Omakundilo ombili

OMBELETANGA

Omukuluñu uOupundi.



## OONKUNDANA DHEPANGELONGERKI.

Epangelongerki lya li lya gongala ku Karibib eti 9 neti 10 lya Maarts pamwe nepangelongerki lyongerki onkwaluther mu S.W.A. neti 11 Maarts pamwe nomapangelongerki gaali goongerki onkwaluther. Moshigongi mwa tokolwa:

1) Pu totwe okangundu koshimpwiyu shekwatathano noradio. Omusamane Milk, Reeh na Marttunen oya hogololelwa mo.

2) Pu totwe ombelewa yokutaandelitha oonkundana dhoongerki ndhika ndatu, omunashimpwiyu oye omuhongi Reeh ku Karibib.

3) Pu hogololwe ongundulongekidho yokukonakona iinima yimwe yuuteologi.

4) Pu hogololwe wo okangundulongekidho ka longekidhe iigongi yoongerki ndhika ndatu. Omuhiyi nomuwiliki gwokangundu oye omuwilikerki L. Auala.

Aakwanepangelongerki lyetu mboka ya li moshigongi sho ku Karibib oyo: omuwilikerki L. Auala, omukuluntutumwa A. Hukka, aasitagongalo A. Eirola, V. Teinilä, P. Andreas, T. Shindongo na Efraim Angula.

Tomas Shindongo a hogololwa kEpangelongerki a ninge oshilyo m Kangundulongekidho koongerki ndhika ndatu.

Epangelongerki lya tokola pu landwe iihauto iyaali yongerki oshinene noshishona. Oshimpwiyu shoku yi konga sha pewa omukuluntutumwa A. Hukka

Epangelongerki lya tokola pu indilwe Epangelotumo, li kwathe ongerki, Benjamin Makambuli, a ninge omuhingili gwongerki.

Pwa tokolwa egumbo lyomulongi gwoskola yuusita omuvalelwamo li tungwe kongerki lyo li kale eliko lyongerki.

Timoteus Shipanga, Elimi, ngoka a li a uthilwa kOshigambo ita yi ko we, ota yi ketsikiloskola ku Oscarsberg. Johannes Nantinda ita yi ko we kOkaku. Tomas Tuutalen, Onayena, oye a langekwa kOkaku.



## KUDIPAGA NOKULIGUSA EZIMO SIPONGA.

Kuligusa ezimo siponga unene meguru. Ono hondere, ono vaka, ono dipaga, ono kotokere, ono swaura edina lya Karunga mawokowoko. Resa si 1Kor.6:9,10 na tjira unene pokuzuva nonkango odo. Mukuetu ota renje momemo vakeke ku na kupupa nomena okankuke otare konondundu ihuna nje. Vakeke ku na dundu vana dundu.

Karunga ta handuka unene morua ininke oyo yoidona. Unene kuligusa ezimo siponga, siponga sosili unene. Resa Daniel 12:2; Kotokamukuetu, uzuni tau huru po. Karunga ta ku tona nononkondo, ove mukuetu ove munoge ogu ono ligusa taka ku ku tjaira kuzamo uhamba uomeguru taujunga nane kupi ono kuza njame ogu mu noge ua zumbire ndindira nge nane.

Akser Amanjami.

Omolu oonkundana dhongerki yetu tadhi tumwa ku Reeh, Epangelongerki lya tokola aasilishimpwiyu yadho ya kale: omuwilikingerki L. Auala, omukuluntumwa A. Hukka na E. Angula.

Epangelongerki lya dhimbulula otapu pumbiwa oskola yaamati mboka ya koka nga ndjoka ja kala mEeñana. Epangelongerki lya tokola okangundulongekidho kayo mu kale: omuwilikingerki L. Auala, omukuluntutumwa A. Hukka, Liina Lindström na Kornelius Ndjoba.

Olwaadhi olwa fike po ongulu yoskola mEtilyasa, ndjoka ya hupile komulilo gwolwaadhi konima yomimo mbali. Epangelongerki otali indile aasitagongalo ya fatululile omagongalo ekwathathano lyopakriste ge li hololele egongalo Etilyasa li vule ishewe okumona ongulu yoskola.

## EUTHILO LYA JESUS INUUYAMBA WA SHILI.

Luk. 12: 13-21.

Gumwe gwomongundu okwa pula Jesus ekwatho omolwuuthiga, ihe Jesus ote mu yamukula: "Kuume, olye a tula ndje ndi ninge omuuthi nomutopoli guuthiga weni?"

Eeno shili, Jesus kee shi omuuthi guuthiga weliko ndika tali hulu po pamwe nuuyuni mbuka, ihe Jesus oye omuuthi guuthiga womegulu. Ayehe mboka taa kongo euthilo lye otaye li pewa ku Jesus, ngashi Jesus mwene ta ti: "Kaku na ngoka ta yi ku Tate okuninga ta pitile mu ngame." Jesus okwa, tulwa ku Kalunga peha lya simana eha ndyoka inaali dhimbululwa ku gumwe gwomongundu. Eha lyeuthilo ndyoka Jesus e li pewa ku Kalunga oye e li zimine nenyanyu, onke ta tegelele ayehe ya konge mu ye euthilo lyomwenyo gwa aluhe. Oye ote tu uuthitha ombinzi ye ondjapuki. Ayehe mboka ya yogwa mombinzi ya Jesus oya uuthilwa okutaamba uuthiga womegulu.

Mpaka pwa popiwa wo omuyamba omugoya. Ugoya womuyamba owa li mpoka sho a vulu okulombwela omwenyo gue gu fudhe, gu lye, gu nwe, gwo gu nyanyukwe sho gwa pungulilwa iputha oyindji. Ano iipalutha mbika tayi kwatha owala ela lye, yo itayi palutha omwenyo. Ano omuntu niipalutha ye oyo ayeke, kapu na egwano lya sha, ihe omuntu na Jesus, nando pwaa niipalutha, opu nombili ya shili.

Omuyamba nguka okwi ipyakidhile nokulonga, opo a mone iipalutha ya gwana, opo a fudhithe omwenyo gwe. Ano oye ini ipyakidhila nokukonga Jesus Omukulili a ninge eliko lye. Ino gwana niipalutha ayike waa na Jesus, ihe owa gwana na Jesus waa na iipalutha.

Filippus Iimene.

# O K A A N D J E T U

## OMUWILIKI GWOSHI- NYANYANGINDO A KA FUDHA.

Omusamane A. Hartikainen, Katau omuwiliki gwoshinyanyangidho okwa kala oomvula ntano mOwambo no kwa longo oshilonga oshinene moshinyanyangidho. Oye nokwa lundulula iilonga mokulongitha omashina omape ihaga longithwa kiikaha, ihe kolusheno, no ihaga kweywa koonyala ngashi ngeyaka omakulu. Ihe omusamane Katau sho a holoka niilonga iipe nomashina omape, iilonga ya yikomeho shili. Iifo oya holoka nomambo gi ili nogi ili gindjipalithwa nokuli. Nale iilonga sho kwa li ihayi endebele, otwa li tu nokutegelela oondanda, oshoka dha pulwa kUushimba. Ngashingeyi otu na eshina lyokuteleka oondanda nohali longithwa kolusheno. nolyo tali endebelelitha iilonga ayihe nosho wo omashina omakwawo hagingi.

Ihe omusamane Katau okwa longo nuudhiginini oshilonga she, nokwa kala ongomuevangeliste mokati ketu noku tu uvithila oohapu dha Kalunga. Oye a longo oomvula 5, ihe ina vulwa moshilonga she, okwa longo onganoka ta ti:

“Oonkondo ndhi dhandje dhi longith’ Omuwa” . . . . na “Omushigakano gwoye gu yele, ongoye u kale wa simanekwa, nohenda nombili u lele.” Rauna L. Lwanda.

Pamwe nomusamane Katau egumbo lye alihe lya yi nosho wo ompangi gwokOnandjokwe Hilka Björn nomumati Tauno Tirronen a ka tsikile oskola ye huyaka. Ayehe mbokatu ya halele efudho ewanawa li neyambeko lya Kalunga.

## OVAENDA VA FIMANA.

Efiku eti 2 la April 1961, ovakriste vomu Windhoek otua talelwa po komushamane Dikman pamue nomualikadi uaje va dile ku Duishlanda. Ovakriste aveshe ovauambo novaherero otua ongala mongerki potundi ofi 3 omutenja. Ongerki oja li ji jadi tuundo. Otua hovela neimbilo 445. Omushamane Diehl okua ninga elongelo-Kalunga, konima okua eta jo epandulo omolu ovaenda vetu, ovo ve ja oku tu talelapo va dja kokule ku Europa. Okua pandula jo Kalunga eshi tua



## OYA MANA OONDJENDA DHAWO.

Efolo LAIMI MUTANEN  
a valwa 1. 7. 1897, a si 12.2.1961.  
Omusitagongalo ARI MUTANEN  
a valwa 17. 4. 1908, a si 8.4.1961.

Oya longo omimvo 1935-1949 muka mOwambo. Kalunga okwe ya zimbula konyala pethimbo limwe. Meme Laimi okwa alukwa uuvu uudhigu, ihe ethimbo efupi ngaa. Tate Ari Mutanen okwa mana oondjenda dhe ombadhilila, shokwa li pokuya kolwendo lwe okutalelapo omagongalo nokuninga iigongi yetumo.

“Oomboka taa kunu nokulil’ omahodhi, oyo taa ka teya nenyanyu lyopombanda. Oyo taa ende nokulila sho taa fala ko ombuto, otaa ka galuka ko nokuligola nge taa humbata ihampi.”

Eps. 126:5-6.

**Omufitaongalo uokEdundja Natanael Kapofi a hulifa ouenda uaje mefiku eti 13 mu Mei 1961.**

“Omuene, paife oto lekele omu-  
oija uoje nombili. . . . .” Luk. 2:29.

tuminua omujevangeliste, ou a nangekua moshilonga shaje efiku tuu olo. Okua hambelela jo Kalunga eshi e tu tumina omaano odula, nedu noimeno ili po ja hafa unene.

Eshi a hulifa omujenda uetu omushamane Diehl okue tupopifa neendjovo dotekisti jefiku tuu olo, Mark. 16:1-9. Okua tonga ta ti: Ovakriste aveshe mu Duishlanda paife ove nehafo omolu enjumuko lOmuene. Ovo otava ende jo mokati kovaiteki, noku va hokololela efjo nenjumuko lOmuene. Nanje jo ovakriste ava mua ongala mongerki omu, hoveloni nena mu lombuele ovapaani aveshe mu tje: Jesus okua njumuka, efjo kali na vali eeñgono oku tu kuatelela mo mombila, omaljenge aeshe a tokauka po.

## JULI.

1. Sa. Gal.6:1-5. Rom.9:25-29.
2. S. Os. 5 ya landula Uukwatatu. Rom.3:19-27. Joh.1:45-51. 2Mos.19:3-6.
3. M. Mark.9:38-41. Rom.10:12-21.
4. D. 1Aak.19:15-21. Rom.11:1-10.
5. W. Mat.19:27-30. Rom.11:11-24.
6. Do. Hes.13:17-23. Rom.11:25-32.
7. V. 1Tes.2:13-20. Rom.11:33-36.
8. Sa. Mat.13:47-52. Iil.14:1-7.
9. S. **ESIKU LYETUMO.** Rom.3:28-31. Mat.5:17-19. 1Sam.15:22-29.
10. M. Jes.45:9-13. Iil.14:19-28.
11. D. 1Petr.3:18-22. Iil.15:1-12.
12. W. Gal.3:26-29. Iil.15:13-35.
13. Do. Mark.16:14-18. Iil.15:36-16:8.
14. V. Mat.3:13-17. Iil.16:9-15.
15. Sa. Ef.3:14-21. Iil.16:16-25.
16. S. Os. 7 ya landula Uukwatatu. 1Joh.1:1-7. Joh.13:31-32. 2Mos.34:4-9.
17. M. Mark.8:13-21. Fil.1:1-6.
18. D. Jak.3:1-10. Fil.1:7-11.
19. W. 1Kor.6:19-20. Fil.1:12-26.
20. Do. Mark.9:43-50. Fil.1:27-2:4.
21. V. Mat.10:26-33. Fil.2:5-11.
22. S. 1Kor.9:24-27. Fil.2:12-18.
23. S. Os. 8 ya landula Uukwatatu. Rom.4:1-8. Mat.7:12-14. 1Aak.18:36-39.
24. M. Mat.5:13-16. Fil.3:1-11.
25. D. Gal.6:7-10. Fil.3:12-16.
26. W. Jak.2:14-17. Fil.3:17-4:1.
27. Do. 1Kor.12:12-26. Fil.4:2-9.
28. V. Mat.21:18-22. Fil.4:10-23.
29. Sa. Ehol.14:14-20. Iil.17:1-15.
30. S. **ESIKU 3 LYEGALIKANO.** Sef.3:9. Rom.10:9,10. Mal.4:2.
31. M. Omuuvithi 9:13-18. Iil.18:1-17.

Konima omatanga ovaimbi ovanjasha ova imba omaimbilo mahapu omahambelelo. Nokonima omujevangeliste uetu mupe okue tu popifa jo neendjovo dOmuene, nokue tu tua omukumo mokukala moukriste uashili neilikano, mounjuni ou u jadi oiponga nomapukifo mahapu.

Omudimbi ueendjovo da Kalunga ua talaleka eemuenjo detu. Nefiku tuu olo eemuenjo detu da ehenufua popepi nOmuene. Ohatu hambelele shili Tate Kalunga eshi e tu tumina, nohe tu tumine alushe ovatumua vaje, ovo tave tu tu omukumo mokukalamuenjo kuetu alushe.

Ovaenda vetu ohatu va halele e-nangekonoupuna lOmuene, oje muene e va endife nondjila i na elao fijo te va fikifa nombili, va uape okutuikila natango oshilonga shavo nehafo.

Abraham Jakob,  
Windhoek.

## OONKONDO DHESHASHO.

Mat. 28:19.

Eshasho olyo eshike?

Shika otu shi shi nawa kutya eshasho olyo oshilonga shesilohenda lya Kalunga, nosha kolekwa ku Jesus Kristus, oshoka a pe aalongwa ye oshilonga sheshasho ye ke shi longe muuyuni auhe. Oye nokwe ya uuvanekele okukala pamwe nayo omasiku gawo agehe.

Meshasho omu na oshinima oshinene. Ngiika to ti: oshishike?

Ndi shi osho tuu shoka she etitha elongo ndika muuyuni. Omuwa Jesus ta ti: Indeni nuuyuni auhe ne mu longe aantu ayehe, noya dhigini ne ayihe. Osho Jesus a dhika eshasho eyapuki noonkondo dha tya ngaaka. Meshasho omu na oshinima oshinene sha holekwa mo, osho endhindhiliko ngashi tatu li mono peshasho: Taamba endhindhiliko eyapuki lyomushigakano moshipala shoye nopontulo yoye, li kale onzapo yokuhokolola kutya ongoye wa kulilwa ku Jesus Kristus, omwalelwa komushigakano, no wi ithanwa u kale omulongwa gwe.

Nena otaku ya epulo: ngame onda ndhindhilikwa wo tuu? Eeno kape nomalimbililo na ngoye owa pewa endhindhiliko lyoye esiku una wa shashwa.

Eeno, omukriste kehe oye a pewa endhindhiliko ndika lya Kalunga, lya ningi onzapo ye. Oku naakriste oyendji natango omboka inaa ndhindhilikwa momwenyo nendhindhiliko ndika ye li pewa pombanda. Omukriste omukwetu, oho pangelwa kulye?

Otu nokukoneka oshinima shika, tse nangoye, okeshasho lya tya ngaaka, otwa yoololwa mo maantu yalwe mboka kaye na euvaneko lyetegelelo lyomwenyo gwa aluhe, noye li kondje yehupitho lya Kalunga. Koneka Joh. 1:12! Omboka ayeke ya shashwa, oyo taa pewa oonkondo ku Jesus ya ninge aana ya Kalunga. Nomadhina gawo ga tseyika ku Kalunga, e ga nyolela mo nokuli moramata ye.

Tu ipuleni ano ngele tu li moonkondo dheshasho notwa kuthwa mo mepangelo lyomutondi nolyonyama yetu yene!

Stefanus K. Shivolo.



*“Otandi ku shashele medhina lyaHe nolyOmumwana nolyOmbepo Ondjapuki.”*

## OKWITAALA NGOYE MWENE ITAKU KU PE ELAGO.

Muuyuni wongashingeyi omu na aantu ye na eitaalo omolwooyakwa wo ngele taa yi mongerka, aniwa, ku monike komuhongi nenge komulongi nenge komusitagongalo, ihe hamolweitaalo lye mwene, Gal. 2:16, 21.

Eeno, omukweni ye mwene ita tseye eitaalo lyoye nkene li li mungoye. Ihe Jesus ta tala momwenyo nota konakona, ngele tse aaneitaalo ya shili nenge awe.

Moramata tamu tiwa: oshoka mwa hupithwa keitaalo, Ano ongoka i itaala, ota hupithwa. Ihe nena aantu oyendji inaa hala eitaalo lyehupitho ndyoka ye li pewa omagano, otaa lalakanene ndyoka lyokwimonitha kaantu, 1Kor. 15:2.

Omuntu ngoye, wa hala u tseye tuu eitaalo lyaa niilonga kali vulu sha?

Mpaka onda nyola nda mono opendji nomungame mwene omuntu okwa gongele omambo goohapu dha Kalunga, ihe eitaalo muye itali inyenge nando. Ongashika etango noonnyothi ito yi mono po oshita, awe; etango ngele lya piti, oonyothi ito dhi mono nando yimwe. Ihe oko dhi li. Oshike ano tashi longithwa eitaalo ndyoka lya dhima, eitaalo lyaa niilonga, Joh. 12:42-43.

Oyendji yomaakuluntu ye neitaalo, ihe lyaafarisayi, oshoka oyo ya li ye hole esimano lyaantu komeho gesimano lya Kalunga. Omukwetu, o tse nangoye tatu ilongele okugeelwa moshilonga sha tya ngeyi.

Ongoka i itaala Omwana gwa Kalunga, oye e nomwenyo gwa aluhe, ihe ongoka ita vulika kOmwana, ita ka mona omwenyo gwa aluhe, ihe ondjahi ya Kalunga tayi kala kombanda ye, Joh. 3:36. Iyelekeleni ngele mu li meitaalo; ipulapuleni, nenge inamu itseye one yene nokutya Kristus e li mu ne? Nenge pamwe itamu vulu eyeleko, 2Kor. 13:5.

Ohandi galikana, ongoye u neitaalo, eitaalo lyoye li kale li noonkondo dhokuyakula iilonga ya Kristus omokutseye uwanawa auhe tu u na, Iil. 1:6. Oshoka ngele to hempulula nokana koye Kristus oye Omuwa no u mu itaale momwenyo gwoye Kalunga e mu yumudha kuusi, nena oto hupithwa, oshoka okwitaala komwenyo otaku ku yuukipalitha noku ku hupitha, oshoka oramata tayi ti: Shaa ngoka e mu itaale, ita ka siithwa ohoni, Rom. 10:9-11. Nokaku na omukwawo ehupitho lya kala muye, oshoka kaku na edhina lilwe koho yegulu lya hololelwa aantu moka tu na okuhupithilwa, Iil. 4:12.

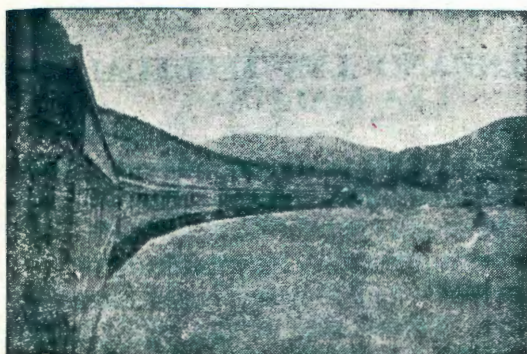
Johannes Eliakim Mukunda.

ONDERWYSDEPARTEMENT.

ADVERTENSIE: VAKATURES VIR SES SKOOLRAADSEKRETARISSE IN OVAMBOLAND.

Aansoeke van geskikte applikante vir bogenoemde poste word ingewag tot 16 Junie 1961. Applikante moet bereid wees om hulle te vestig op die standplaas waar hulle aangestel word. Die volgende standplase word beoog: Oshikango, Omunguelume, Ondangua, Onajena, Uukuangulo (Uukwambi), Ombalantu, Meld kwalifikasies en ondervinding. Aansoeke moet vergesel wees van twee onlangse getuigskrifte.

Stuur aansoeke aan die Inspekteur van Inboorlingonderwys, Posbus 8, Grootfontein, S. W. A.



*Eshina lyolutenda tali ya ku S.W.A.*

ONDJILA YOKUYA KU JOHANNESBURG.

Esiku eti 24 Februarie 1961 otwa tameke olweendo lwetu okuya ku Johannesburg. Otwa yi pamue na tatekulu A. Hukka nomusitagongalo J. Shifiona. Otundi onti 12 yesiku tuu ndyoka otwa thiki mu Tsumeb. Potundi 3. 30 otwa tsikile ondjila yetu neshina lyokolutenda, nokuuka kUsakos. Ongula yesiku eti 25 potundi 6. 30 otwa thiki mu Usakos, moka twa adha eshina ndyoka lya zi ku Walvisbaai, notali yi sigo ku Union, nokuli sigo ku De-Aar. Otwa londo meshina ndyoka notwa thiki ku Windhoek pomutenyalela. Okuza ku Tsumeb sigo Windhoek, koombinga noombinga oku na oondundu, dhimwe odhi niihwa ya ziza nawa, manga dhimwe dhi nomamanya gowala. Melundu omu niihwa nomano omawanawa, nosho tuu.

Potundi 1. 30 otwa thigi po Windhoek notu uka kUumbugantu kiilando mbika ngashi ya landulathana, Rehoboth, Mariental, Keetmanshoop na Karasburg. Okuza mu Windhoek sigo Karasburg, oondundu odhi lyathane kokule, pokati kadho opu nomahala omanene ge eguluka, kage nomiti, omwidhi aguke, ihe iihwa yimwe, yimwe ayike. Nongula yesiku eti 26 potundi 9 otwa thiki ku Karasburg. Oshilando osho oshilando oshinene sha hugunina mondjila ndji kiilando ya S. W. A. nokuya ku S. A.

Komatango gesiku tuu ndyoka potundi 5 otwa thiki mu Upington, shili nokuli mu Union. Eshina olye tu ukitha ku De-Aar, omo moka twa yi meshina ndyoka tali uka kUumbangalantu, notwa yi ku Kimberley. Okuza

mu Kimberly otu uka ku Johannesburg, notwa pitilemilando mbika: Bloemfontein, Klerksdorp, Potchefstroom na Heidelberg. Omalundu okuza ku Kimberly oga ziza nawa, noge niihwa yo opala. Oondundu odhi niihwa koombinga noombinga, oku noma-pya omanene gepungu lya koka nawa nosho wo iikunino iinene. Ongula yeti 28 potundi 6. 30 otwa thiki ihe mu Johannesburg mu Parkstasie. Omo moka twa adha mo aantu oyendji noonkondo, taa inyenge neulumo koombinga noombinga. Otwa taambwa nenyanyu megumbo lyomusitagongalo omuzulu Paulus Mhlungo. Otwa mono wo ompito okutala oshilando koombinga noombinga. Osho oshinene sho opala noonkondo, shi nomatungo omale ga londathana.

Esiku limwe onda yi wo ku Pretoria, osho oshiwana shili. Onda tala wo egumbo lyepangelo, osho wo Monument. Eopalo nuwanawa ou li ko hwiwaka, itau pu kuhokololwa. Ando okwa li tashi vulika, ando onda thigi ko omeho gandje ga tale natango koombinga noombinga. Aantu mboka taa longele, notaa simaneke Kalunga, oye li ko wo oyendji. Otaa dhiginine wo okupa Kalunga sha, sho taa gandja oongalo ya dhiginina. Oya hala wo okukala mekondjo nometonato, ya tegelela Omuwa Jesus. Shika nashi tu gwedheleni wo uupe-nda mekondjo lyetu, oshoka nani hantse atuke mekondjo ndi, unene sho Omuwa Jesus e li aluhe pamwe natse.

Omwa kundilwa po tuu kwaambe-yaka!

Andreas Shingenge.



Tu jandjeni eendja pefimbo lado.

Luk. 12:42-48.

Ovatukuli voikulya jeendjovo da Kalunga mOuambo, ngeno keshe umue a dimbulukue oshihupe shefimbo tu li na kutja, otali pumbua oludi loikulja ei tai uapalele efimbo tu li na paife.

Oshiuana eshi otashi pumbua ovafita, ovalongi, ovaevangeliste novaudifi aveshe omapenda, itava tila nande okupopja nokutoñela oulunde uovene, no itava tila omahepeko. Ve nokukala ovahekeleki, ovanalukeno novanahole momaudifo avo, tava shilile eedi koshiunda. Kave na oñepo jokushundula oshiuana, kave fi ovanandubo poñele jokujambula oshiuana. Tala Luk. 12: 4-12. 1Kor. 13:1-8. Heb. 13:1; 13:9; 12:1-3, 12-13; 5:11-6:1-3.

Hano konga eeñele adishe odo, opo u tale etukulo loje leendja ngenge oho di jandje tuu pefimbo la uapalafana neudifo loje, ile natango ou li ngaho mekujandja omashini ngouhanana.

Oshiponga shinene shi li mOuambo, osho ohole jeliko, novaudifi vahapu va kuatua naji kohole jeliko, nova ninga ovapukifi novashunimoni-ma ovakua. Poñele imue mOmbibeli taku ti: "Eongalo lange itali ka findua nande okeeñgono doheli," Iil. 22:5-8.

Hano omuudifi uevangeli ita dulu, no ita pumbua okulitula moimima i li kokule nehupifo lovaitaveli. Jesus ina kondjela oikuadu. Ngenge Kalunga okua ufa ovauambo va mangeluke moutekupangelo, ehala lae nali longue.

Tu tamekeni hano okulonga noudiini fijo Omuene ote ja.

Benjamin Shiteni,  
Onguediva.

# OSHIKOLOLO SHAAGUNDJUKA



## ETHIGATHANO

Omayamukulo gomapulo ngaka ga nyola mombapila ndjika u tete ombapila nawa ngashika ya ndhindhulikwa. Ino dhimbwa okunyola oadresi yoye wo, opo tu wape oku ku tumina okapandulo ngele wa yamukula nawa omapulo ngaka.  
Yamukula pafupi!

Teta mpaka \_\_\_\_\_

Edina lyomotumi: \_\_\_\_\_

Oadresi: \_\_\_\_\_

Nyola mpaka  
eyamukulo lyoye:

1. Oolye taa popiwa mOmbimbeli inaa mona eso? .....
2. Tumbula omageelo ga 5 ngoka aagipiti ye ga tuminwa. ....
3. Oolye ya pewa oshilonga shuusaseri? .....
4. Omuprofeti e vule ooyakwawo, olye? .....
5. Tumbula omadhina 3 gaalumentu mboka ya umbilwa  
meziko lyomulilo. ....
6. Epsalmi ndyoka ele li vule omakwawo agehe, olini? .....
7. Iipango omulongo otatu yi adha peni mOmbimbeli? .....
8. MEvangeli lya Mateus ontopolwa 5, otu na euvitho lya shike? .....
9. Evangeli pa Lukas niilonga yaayapostoli oya nyolwa kulye? .....
10. Aalongwa ya Jesus yatatu ya li popepi naye, oolye? .....
11. Omuwa Jesus sho a kala kombanda yevi okwa yumudha aasi yangapi? Tumbula  
omadhina gawo. ....
12. Ehokololo yletililo lyOmbepo Onjapuki otatu li  
adha peni? .....
13. Omuyapostoli Petrus okwa si ngiini? .....
14. Omuyapostoli Paulus okwa shashwa kulye? .....
15. Omuyapostoli Paulus okwa si eso lya tya ngiini? .....

## ETHIGATHANO LYA FEBULUALI NO- LYA MALITSA

Omboka ye tu tumine omayamukulo	305
Omboka ya yamukula nawa	213
Omboka ya puka	77
Omboka ya tumu etata lyeyamukulo	15
(eyamukulo lya Febuluali nenge lya Malitsa alike)	
Omboka ya yamukula nawa, oya tuminwa uumbo wawo.	

## DIMBULUKUA OMUSHITI UOJE PEFIMBO LOUNJASHA UOJE.

Ofje ovanjasha ovauambo otua fa inatu pashukilua naua koshinima sha tja ngaha. Ndele tala efimbo eli tu li kuete paife, olo efimbo londilo shili. Omukuetu omuhoolike, efimbo eli u li na paife, ope na vahapu tave li lilile ndele kave na vali oñito. Omoluaashi eeñgono davo da pua po nomoluaashi ve li danaukifa nale.

Omukuetu omuholike, apa ope na omapulo e ku fikamena: Oua ja lungapi koshigongi shovanjasha kongerki? Onaini ua ende ondjila ile to i koshigongi nokuli to i u ka konge epalulo lokupalula omuenjo, okomaongalo e lili na ku lili koigongi jOmbimbeli?

Mokunangala kuoje nomokupe-nduka kuoje oho dimbulukua tuu omushiti uoje momaindilo nomohambelero? Oho shi ningi tuu, omukuetu omuholike? Oua peua omaano, jandja jo omaano. Efimbo eli u li na paife, olo oliua shili, ino li kuata ouhefi, omunjasha omukuetu.— Kala ua hokua alushe omalongo, osheshi mokulongua otamu di shihapu tashi ku kuafa notashi ke ku kuafa meulu, nokombada jedu jo, unene tuu meulu. Ofje ovanjasha ovauambo ngenge itatu kondjele omalongo, nena oshiuana shetu otashi ka kala konima shili, nohatu ka talika ovañu vongaho, tu li moupofielela. Inatu kala mouhefi uongaho uounjuni ou mokunua nomokunangala ashike, ndelene, tu kale shili ovanjasha ava otava kaleke oshiuana shauo ofika. Omunjasha ove omukofeleli, penduka, ove ou li po natango oshilongifo shipe meke la Kalunga. Tala Fil. 3:22-14.

Ino dimbua omushiti uoje opefimbo lounjasha uoje.

Erkki Ndaudako Muashindange.



# OSHIKOLOLO SHEGUMBO

## IILONGA YOMUNONA.

(Etsikilo).

Mokukoka omunona ta pewa wo uulonga we mu yelesa. Oye e nokutseya ethimbo lyokulonga nolyokudhana ogi ili. Ngele a paluka nawa kuudhano, ota dhiginine noto opaleke iilonga ye. Onda tseya omukulukadhi gumwe e naanona oyendji. Ayehe oya topolelwa iilonga paukuntu wawo. Mboka aakuluntu otaa longo ngashi aakuluntu, ihe aashona wo ye nuulonga wawo. Shaa ngoka okwa tseya nawa oshinakugwanithwa she shesiku kehe. Oya topolelwa iikondo megumbo okuopaleka, no shaa ngoka oku na li thike poonkondo dhe. Oyo taa longo iilonga iikwawo wo, ihe e shi shi shili eha ndika e noku li opaleka esiku kehe.

Esiku limwe onda yi megumbo ndika komatango. Omukulukadhi okwa li a piti mo. Aanona oye ya ku ngame notwa nyanyukwa nayo. Opo tu li po yina okwe ya mo. Ongomuntu gumwe mokuuva oonkatu dha yina, shaa ngoka okuluhati. Taa kombo na mbo aashona puuhale wawo. Onda hokwa aluhe elandulathano megumbo ndyo. Inandi uva ta gandagula nenge ta dhenge - nando ndi shi shi ta dhenge wo ngaa - no inandi tseya ha geele ngiini na unake ngoka ina tsakanitha iilonga ye. Shimwe ndi shi shi: oye a putudha nawa oyana, onke taa longo paiuvo.

Natango tandi ti: Omunona e nokutseya iilonga ye nomukalo gwo-ku yi longa, opo kaa geelwe na uuna ini ilongela egeelo. Ihe e nokupewa wo ompito okudhana nokukokithilwa iidhanitho. Moostora mu na wo iidhanitho ngashi okatanga nuupopitha, n. sh. t. Opo kaa tuule oohema dhe nenge dhoyakwawo a mone oonguwu dhuupopitha we, e nokupewa iiyando inayi pumbiwa palwe.



Esiku limwe aanona taa pewa wo uukulya wa sha; ongele uusila nenge uukunde, n. sh. t. yi itelekele mominzile dhomiti nenge muutsali ye u dhiki. Osho taa ningilathana uututhi notaa ilongo wo okuteleka. Uuna ya humu komeho, taa vulu wo okuhiya aakuluntu yawo koshililo notaa nyanyukwa pamwe. Pe nokukotokwa pwaa holoke oshiponga shomulilo niiponga yilwe.

Aanona ye nokuigilila okupewa aluhe, ha okuyaka. Omufuthi nomutanani nomunambepo kehe ombwinayi e nokugeelwa; ongele okukondwa mo nokuli muudhano. Osho taku dhigininwa uuyuuki nuuyogoki wo.

Omuputudhi omunandunge nomudhiginini oku noshimpuyu aluhe okutseya oyana oye li peni noye li noolye notaa ningi shike taye shi ningi ngiini.

L. Mp.

E. Nd. Shiimi, Uukwaluudhi, ota ti: Tu dhimbulukweni okukala kwetu kombanda yevi olyo efupi, ngele tatu li tegameke nthimbo ndiyaka. Otse twa ningi aanelago, sho tu noohapu dha Kalunga. Oshoka ookuku yetu nando ya kala momilema, oya li nga ya dhiladhila "oku na Kalunga ka shili", nando inaye mu tseya. Ihe tse mbaka twa mono notu uvu, ihatu dhiginine uuyamba mboka twe u pewa. Tu dhiginineni iipango ya Tate Kalunga notui itaale shili Jesus Kristus, e tu sile komushigakano, etatu ka hupithwa.

## OJE HA KALA AKUSHE.

Kalunga omushiti uetu, Oje Kalunga shili, kape na shimue sha holekua omesho aje. Oñge ta ti: "Ame nghifi Kalunga kokokule ile kopopepi. Ohandi kala apeshe, ngenge ua hala u hondame ondi ku uete, oñge nande u je momakololo opo jo ondi ku uete." Aamuatate, inatu lifufja nounjuni ou fje tu tje pamue hatu dulu okuhondama Kalunga.

Omuene ta ti: "Mbela ha ame nda jadifa eulu nedu, ile mbela ha ame ndi li meulu nedu? Eulu olo olukalua luange nedu olo oshipundi shokuljata?" Omue ne ota ti jo: "Ongulu ja shike mua hala okutungila nge, ile oñele jetulumuko lange i li peni? Ha eke lange la shita eshi a shishe hamba?"

Eshi oshi li po shili ouua ua uana eshi Kalunga Tate a hala alushe okuholola oshipala shaje ku fje, Je ina hala oku tu idimbika.

Tu mu jeululileni eemuenjo detu Je a kale mo do di ninge oñele jaje jokukala mo. Simon Namunjekua.

## LALEKENI AANONA YA YE KOSKOLA.

Aakuluntu, kambadhaleni shili okulaleka aanona, ya ye kootundi ku ye, yaa pitililwe po kiilongwa ayihe. Oshoka uuyuni wongashingeyi otau pumbwa omuntu nguka a longwa nawa. Ngashi mu shi shi nawa nokuli kutya, omuntu ngele ina longwa sha, kee na ekwatho unene.

Aakuluntu, oshinima shika nashi ninge oshimpwiyu sheni, opo aanona kaa mone iihuna, ngele taa ya huka kUushimba. Nongashi aakuluntu yamwe pethimbo ndika otaa tameke nokuli okuninga aanona aapika yuusita. Omunona iha yi we koskola nokuli.

Nongele he yomunona ta monathana nomulongi, okonena tuu ndjika omulongi ota pula omulongwa gwe, omolwa shike ihee ya koskola. Nena ngoye oto yamukula wa geya: "Aanona otaa litha oongombe." Omunona ngele te ya kUushimba, e ta kala nokumona iihuna, dhimbulukwa oshiponga mpoka sha zi: Omungoye, sho wa li we mu ningi omupika gwoongombe. Onkee ano, sigo aluhe muupika wa tya ngaaka ita ka manguluka mo we.

Omuwa Kalunga ketu nOmumwana Jesus Kristu na yambeke aasita yomagongalo naalongi omiilongo ayihe, ye e ya kolekele oshilonga shawo.

F. Lyameua.

Mongulu yOmuwa  
gwandje  
Enyanyu li li mo.  
Oomwenyo ndhoka  
dha aala  
Ngoongala dhi li po.  
Dha senota,  
dha kugu,  
Dha taalela Omuwa.  
Komume yomegulu  
dha talalekithwa.



Uutoye wOmuwa  
gwandje  
Omo nda makele.  
Megalikano  
lyandje  
Oonkondo ndi indile.  
Uujamba mbu  
wuyuni  
Wa hal' u kwate ndje,  
Owo omuzizimb'  
owala  
Kenyanu lya aluhe.

Konda mpaka u pungule ehokololo ndika. Etsikilo tali ya.

Epandja 3

## ELIKO LYA ALUHE.

(etsikilo)

### II

Mookatakombe.

Omuhokololi II. Oku nuusiku. Aantu ya zimbuka, ya ka lala. Oonyothi adhike tadhi tonata. Tadhi mono ko aantu yamwe ya zi koshilando, taa ende nokumwena e taa hedha popepi noongulu dhoonakusa dhomeni lyevi, ookatakombe. Taa kulukile mo e taa ende noondjila dhomeni lyevi. Oonyeka dhomiikaha yawo tadhi minikile oondjila ndhoka dhomoshashi. Itilitho yuusiku no yoshaasi ya fa yi li po oyindji, ihe aakriste oyo tuu mboka taa gongala melongelokalunga lyawo. Mokati kawo mu na Klelia nomupika gwe Veronika.

Klelia: Oshike andola na ngame nde ya?  
Mokati koombila uumbanda ndi na.  
Oku nomilema dhuusiku wo mpa.  
Uuyelele owo nda halelela.

Veronika: Matilitho tage ka kanduka po,  
kathimbo—no pwe ya elunduluko:  
Enyanyu nuuyelele tuu sindi ngaa.  
Ombili tu na muJesus, Omuwa,  
Ayihe ote ke ku yelithila!

Klelia:

Oshindji wa hokololele ndje,  
momwenyo omulilo wa hwameke.  
Omu nomapulo ga nyenge ndje,  
te pula, nda tega, ga yamukulwe.

Veronika: Omumwene, u tege neinekelo, to mono wo mbala eyamukulo.

Klelia: Ewi lyaaambi, ngoy' u uvu ko?

Veronika: Olyo no kutse eithano.

Ongundu yaaimbi I, II:

One mbo mwa silwahenda,  
simanekeni Omuwa!  
Jesus Kristus oye ependa,  
kwa si nokwa sindana.  
Onime ya Juda ye,  
ye a pwa a simane! (Ehangano  
430)

Ongundu I: Ileni, tu nyanyukilweni Omuwa, tu imbileni emanya lye-hupitho lyetu! Tu tsakaneneni koshipala she nokuhambelela noku mu imbila omaimbilo genyanyu.

Ongundu II: Oshoka Omuwa oye omunene nomusimanekwa pombanda, Oye onakutilika kombanda yiikalunga yihe.

Ongundu yaaimbi: Omuwa oye omukwaniilwa, iikalunga kayi po!  
Ye awike e noonkondo, oye e nesimano!  
Omuwa oye omukwaniilwa ndaa nelimbililo we. Mwenyo gwandje kwe gu sindi, nonda ningi omu-

ntu gwe. (Imb. Omuwa 158)

Ongundu I: Ileni, tu tseni oongolo, tu isizimikeni, tu tseni oongolo koshipala shOmuwa, oMushiti gwetu!

Ongundu II: Oshoka oye Kalunga ketu, notse aantu ye noonzi dhuusita we.

Omawi gomoongundu: Onena tuu ndjika nge tamu uvu ewi lye, inamu kukutika oomwenyo dheni.

Klelia: Ndi uve ko wo ewi lye?

Omwilikigongalo: Osho Kalunga a kala e hole uuyuni, ye a gandja Epona lye, opo shaa ngoka e mu itaale kaa kane, awe, oye a mone omwenyo gwa aluhe.

Ongundu yaaimbi:

Jesus, ngoy' oMumangululi,  
we tu sile, ngashi tu li  
nowa zala shekoshani  
peha lyandje, ngu omukani.  
Kwatha ndje, ndi pandule!

Hole yoy' onene shili;  
Nando omunandjo ngame ndi li,  
ngame tuu wa hepekelwa,  
oondjo dhandj' wa dhipagelwa,  
Ngoye ngu, oNzigona.

Klelia: Omolwandje wo  
Epona lya He a gandjwa po?

Veronika: Omolwoye tuu, ongoye ngu wo.

# OUNJUNI OTAU TONGO SHIKE

## OSHILO MU WINDHOEK.

Eshi osha shivifua nale kutja Union tashi ka tambula epangelo lopa-republika meti 31 la Mai neudo; efiku olo mu Windhoek otali kala oshivilo ku ava ve nehalo.

Va indilua nokuli eengerki di ninge omailikano nomaindilo ngenge tadi tetekelele efiku olo ile eli tadi landula. Ku Union no mu Windhoek kashimba pu na nokuli ovo tava ningi omalongelokalunga pokati koufiku uokusha eti 31 Mai.

Meti 30 la Mai omapandela taa jelufua peefikola di lili na di lili, novahongua tava ende momitetete eengundu neengundu.

Meti 31 la Mai taku shivifua ne ou ta ningi omupresidente uotete mu Pretoria.

## OMUPRESIDENTE UA UNION

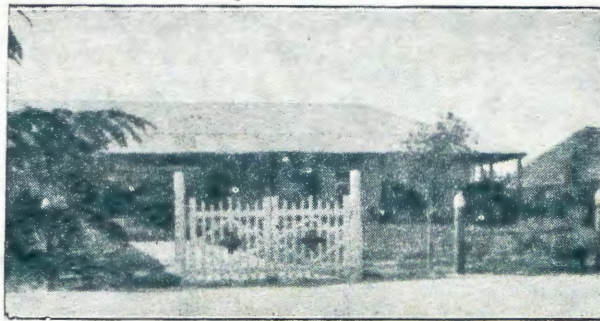
Union eshi sha kala mu Statebond, omupangeli akula uoshilongo okua kala Goewerneur-generaal, omupofeile uohamba mepangelo loshilongo. Ndele paife oshilongo eshi tashi tambula omukalo uepangelo lopa-republiki, omukuluñu uoshilongo ota kala omupresidente. Ehololo eshi la ningua moupresidente mua hololelua oo a kala nale goewerneur-generaal, S. R. Swart.

## OSHIUANA SHOVAJUDA NOU-REPUPLIKI

Omuprofessor Rabinowitz, omurabbi omukulufu meongalo lovayuda mu Johannesburg, okua udaneka moshiongalele shomaongalo omakuayuda kutja: oshiuana shovayuda mu Union ngashi sha kala nale nokudulika nokulinekelala epangelo loshilongo eshi, osho natango tashi tuikile moku-kala oku nomepangelo lourepubliki.

## EEFIKOLA DOUKATOLI MU AFRIKA

Okua dimbululua nokutja ongerki oñguakatoli otaji kondjo mu Afrika, ngashi ja dika eefikola domalongelo elili noelili da hanga fijo 53,050 mu Afrika alike, shi dule momadu amue akula omounjuni.



Omueelo gwokOnandjokwe.

*Etumo lopaluteri* tali koko keembinga neembinga domounjuni ngashi mu Australia, osheshi mongerki oñgualuteri medu lavo tamu valulua ovakuaneongalo 54 894, ndelene i novatumua 121. Mounjuni aushe omu na ovakualuteri eemiljona 70. Ovatumua vavo 3 850.

## Eembibeli omiljona 1 (1000 000) da landua muIngilanda mefiku limue.

Elundululo lipe lOmbibeli ola holoka muIngilanda, nenjangido eli la li eembibeli omiljona 1, ndelene ola landua po konjala alishe mefiku tuu olo lotete sho da holoka. Oshiongalele shoku i lundululula osha longa eedula 14. Elundululo lonale la longifua eedula 350.

*Omubishofi uotete omudaleluamo* moilongo joubangalantu jomu Tanganjika oje omufitaongalo Stefano R. Moshi. Oje a kala tete omupresidente uongerki oñgualuteri moilongo ojo okudja kodula 1958, ndelene okua lukua paife omubishofi. Mongerki oñgualuteri moilongo ojo omu novañu 115 000. Omubishofi Moshi oje omutshagga.

Mu Duishlanda *Ovanjasha 4000* (ovamati noukandona) otava jakula oodiakoni (ovajakulieongalo) moilonga javo okukuafa nokutalela po ovanau-du novakulupe neehepele. Ovanjasha ava itava peua sha omoluoilonga javo, ndelene tave shi ningi kefiminiko lohole ja Kristus.

## OMALAKA MOUNJUNI

Pevalulo lovakonakoni mounjuni otamu popiua omalaka 3000. Muo 1500 inamu holoka manga omishangua meendjovo da Kalunga, mañga amue omuo inamu monenua omadidiliko eendada noalfabeta (omalandulafano eendada).

## OSHIPOPOLUA SHOMEVA.

Oshilonga shokufa omukanka uoshipopolua shokutondoka omeva okudja komulonga ua Kunene nokueta kondama yokOkatana, fijo opapa kua longua eemaila 50, Oshikako shi fike opo osha pula Ooranda 180,000-00. (£90, 000 -/-).

Oshilonga osho nge tashi ka uanifua, oshipopolua otashi ka lotokela omeva efimbo keshe okulongifua mokunua nomokutekela oimeno. Ndele etonatelo loilongifo i lili noi lili otali ka filua oshisho kovauambo ovo tave li linekelelua.

## EHUMO KOMESHO MU UNION.

Omuministeri uepopilo loshilongo sha Union okua holola ediladilo lokuhumifa komesho oilonga jomipepo okuforoma oiluifo, moshilongo shove-ne. Epangelo la tokola nokuli omuuliki ou ta kala noshisho omolu oilonga ja tja ngaha, opo Union lihambulile oiluifo ja uana. Osho edidiliko lehumo komesho loshilongo noleeñgono dasho.

## OU DU UA POLIO.

Meeñele dihapu mu S.W.Afrika kua ningua omalilongekido meenkundafano okukondjifa oudu ua Polio. Oshilonga shokuvendela ovañu ile oku va nuefa omuti va amenue koshiponga, otashi hovele meti 15 la Mai ou.

*Omualu uovañu* kombada jedu alishe ua konda eemiljardi fiatu (3 000 000 000) neudo.

## ONDA KANITHA

Ongombe ondumentu inaayi thonwa, osizi-onkanga. Oya kana esiku eti 22 Desember 1960, ya kanena kIipanda.

Simon Natanael  
Elondo, Tsandi.

## AALESHI TAA NYOLA

## OMAKUNDILO

*Petrus Eelu*, Windhoek, Ota hambelele Kalunga sho e ya tumine omuyenda gwawo oku ya ningila iigongi yohapu dha Kalunga. Natango tatu yuulukwa shili iigongi ya tya ngaaka, moka tatu mono mo iipalutha yoomwenyo.

*Immanuel Nampila*, Oranjemund, ta ti: Aakwetu aaholike mu Jesus Kristus, ondi na oluhodhi olunene omolwukriste wongashingeyi, oshoka tau dhimi mokulandula Omukulili. Iimpwiyu nomafundjaleko guuyuni mbu tage u yono po. Onke ano tu kaleni megalikano, twaa pukithwe komutondadhi. Omboka ya Kristus, kape na shoka tashi ya topola mohole ya Kalunga. Rom. 8:35-39.

*Maria Mwatale*, Oshigambo, te tu njelele: Otandi kundu aaleshi ayehe yOmukwetu neimbilo 490. Oohapu ndhoka oombwanawa shili, ngu dhi dhiladhile mokulessa kwoye.

*Gerhard S. Kalimbe*, Oranjemund, ota pandula oshifo shOmukwetu omolwoohapu dhasho oombwanawa eta ti: Onda pandula unene, oshoka Omukwetu te tu pukulula noohapu dhOmuwa no ina suunje. Na kondje komeho wo. Natse wo tu nokwindila Kalunga e tu kwathe, twaa se uunje, ihe tu lalakaneni shili shika, osho ehukumokomeho mOmbimbili. Tu shi ninge mu ngoka te tu koleke.

Otandi mu kundile po noohapu mu Mat. 21:28-32.

*Andreas Absalom*, Swakopmund, te tu kundu ngeyi: Omukwetu, otatu yi peni, notatu uka peni, ngele twe etha po Omukulili gwetu? Tala, otseni aanelago shili, sho tu na omukwatiketi gwetu, oye tuu nguka Ombimbili. Ngele tatu etha oohapu dhayo nomalongo gayo, otatu uka peni mbela? Ndi shi, mekano tuu, omukwetu. Ihe tu landule omikalo dhomOmbimbili ndjoka tayi tu thikitha ku Kristus Jesus omomwenyo gwa aluhe.

*Elta Shitalengaho*, Usakos, ota kundu ovaleshi aveshe neendjovo di li mu 2 Kor. 4: 16-17, nota ti: Ohatu mono omapijaaano mahapu nomalundilafano, oñge hano dimbulukueni Jesus nokufja kuaje ehe na omatimba, tu dimbulukueni hano okuhambelela nokufimaneka Kalunga muaishe tai ke tu hanga.

*J. K. Ananias*, Okatope ota ti: Ovakuetu ovaholike mu Jesus Kristus, onje ovakuetu mu li mehalakano, ngenge u li moduda joje, ile keshe tuu apa u li, oho dimbulukua tuu omushiti uoje? Omuene okue tu teelega efimbo keshe, tu je kuje. Osheshi meendjovo daje tamu tiua: "Kongeni Omuene mañga ta monika, nje mu mu ifane mañga ku li popepi."

*Justinus Jesaja*, Ogongo, ote tu kumagidha ngeyi: Omutondi satana ote tu kundukidha koombinga noombinga, noku udha

omamakelo ogendji. Sho a makelele Omuwa Jesus, Jesus okwe mu sinditha oohapu dha Kalunga. Oyendji ya yiwa nayo kuye, oshoka inaaye mu sinditha oohapu dha Jesus. Igandja tango ku Jesus, nena oto sindi ayihe omolwe.

*Selma J. Emvula*, Etilyasa, ota kumagidha aakriste ayehe ngeyi: Megumbo lya Tate omu na oondjugo odhindji, moka aantu atuhe tatu vulu okukala mo. Ngele tatu kala nokulonga uwanawa manga tu li kevi ndika, notatu dhiginine oohapu dha Kalunga nokuvulika kiipango ye ayihe iiyapuki, nena otse aanelago shili muka naamwiyaka.

*Titus Ilonga*, Etilyasa, ota ti: Omimvo ndhika adhihe sho tu na ondjala ondhigu ngeyi, inatu vulweni okutsa oongolo tu kugilani ekwatho kOmuwa, opo e tu tumine omagano gomvula, tu wape okumona iipalutha yetu yomalutu.

*Alfeus Naholo*, Omaruru, ota pandula omoluomaano odula ta ti: Ohai hambelele Tate Kalunga eshi e tu lokifila odula mOmaruru. Oimuna novañu ova mona oihuna kenota, ihe paife Omuene okue tu talaleka. Otua uana shili oku mu hambelelela efiloñgenda laje.

*Nabot Shadifeni*, Windhoek, ota hokolola ngeyi: Ovaudifi veendjovo da Kalunga, vahapu ova ninga ovatondua keembinga neembinga, omoluevangeli lOmuene. Ndelele nande ongaha, dimbulukueni eendjovo dOmuene eshi ta ti: "Ounjuni ngenge tau mu tondo, dimbulukua kutja oua tonda. nge tete." Joh.15:18.

## OMAKUNDILO GOKOTJIMBINGWE

Esiku limwe otwa talele po oskola yo kOjtjimbingwe. Tango twa yi mongerka notwa ningi elongelokalunga. Sho twa piti mo, otwa faiwa komaendo, tu ka tale ombila ya nakusa Johanna Gertz no ya Samuel Gertz. Ayehe yaali oyo aatango megongalo lyOjtjimbingwe. Osho wo otwa talithwa ongulu ndjoka yaahongi yotango mUushimba notwa hokololelwa omusamane Hugo Hahn; Oje wo okwa longo mOjtjimbingwe mongulu ndjoka. Ekuma nonena opo li li. Otwa ulukilwa oskola yaakadhona nomilunga odhindji ndhoka omusamane H. Hahn e dhi kuna, ngashingeyi odhindji noonkondo. Onda tameke oku dhi yalula nonda adha po 236 ominenenene, omishona inandi dhi yalula oshoka odhindji noonkondo. Moskola onda adha mo aakadhona 14 aawambo noyilongo yilwe. Otwa kumwa unene, oshoka inatu mona nale Ojtjimbingwe. Notwi imbilwa omaimbilo go opala kaakadhona mboka yoskola notua yakulwa nawa mwayihe.-Ekota li nomwenyo.

Mat.28:18-20.

P. Pilatus,  
Karibib.

## EPUKULULO.

Kehe ngoka twa adhika kuudhigu ngele womukithi, nenge woosa, nenge kehe tuu oompumbwe, ihe ou li mOwambo nowa hala okwiithana omuntu ngoka e li kiilongo ku Oranjemund e ye e ku yakule, omolwuudhigu mboka we ku adha, ninga ngeyi tango.

Inda u ka hokololele tango komufala kombelewa kOndangua, nenge kOshikango. Ngoye u mu hokololele uudhigu woye auhe, noompumbwe dhoye, ngoye to pula ihe ekwatho e ku ithanene omuntu ngoka wa hala e ye e ku yakule muudhigu woye.

Inamu shanga we oombapila nenge okudhenga oondelekelama koposa, oshoka iinima mbika iyali ihayi vulu okupetha omuntu ompito yokuya kOwambo. Oshoka ngele ta falele omupangeli (omugandji gwezimino) ombapila nenge odelekelama ndjoka tayi mu ithana, note mu hokololele shoka she mu ithanitha, nena ota lombwelwa owala, inda manga tandi ka pula kOmufala gweni, ngele oshili tuu to popi. Komukalo tuu ngoka ina mona we ekwatho lya sha. Olwindji omupangeli ta pula tuu kOndangua nenge kOshikango, ngele oshili, ihe ndi shi tashi vulu okupula iiwike itatu nenge omwedhi. Ethimbo ndyoka wa li wa pumbiwa lya pitilile nale nokuli. Oshoka oye ini ithanwa nomukalo omuwanawa.

Longitha ano omukalo nguka omuwanawa, opo u mone mbala ekwatho muudhigu woye.

Omuyakuli mombelewa,  
James H. Kauluma,  
Oranjemund.

## ONDA KANITHA.

Ondjato yiimaliva ombulau, mu na 15/- nokakalata ka C. D. M. nokakwawo ka Lalugweyi, noombapila dhominwe mbali. Oya kanena mondjila yokuya kEngela. Oya kana eti 28 Februarie 1961.

Ashipala Nengushe.  
Omulilo.

Oondongi mbali, yimwe onduudhe ome-la yoshimbundu moshipala, ondema oya fa yina ishewe. Inadhi gumwa nande komakutsi. Ngoka we dhi mono otandi ku fu tu £3. 10s.

Pinehas Josef,  
Onakandi, Onyanya.

FINSE SENDINGDRUKKERY  
OVAMBOLAND  
ONIIPA

## OMAIMBILO GEGON ALO LYA KRISTUS GA HOLOKA.

Taga landwa ngashi nale 5/6, nenge oosente 55.  
Ostora yomambo, Oniipa