

OMUKWETU

No 5.

MAI

1961



“Jesus tuu nguka e mu kuthwa a yi megulu, osho tuu ngeyi ta galuka, ngashi mwe mu mono a yi megulu.”

Iil.1:11.

Egalikano lyesiku lyeyeluko:

Omuwa Jesus Kristus, Omuna gwa Kalunga! otatu ku simaneke, oshoka wa pitililile meso, ou li kolulyo lwOmu kwaniilwa, ongoye Omukwaniilwa kombanda yinima ayihe. Otatu ku taalele Penduthila ongerki yoye aavithi ya hwama mombepo.

Dhika oshilongo shoye koonkondo dhoye! Kandula po ashije shoka tashi ku kondjitha! Kwatha oohapu dhoye dhevangeli dhi sinde natango oyendji ye ku itaale shili, ngoye nguka u li ko, ho pangele pamwe na Ho nOmbepo Ondjapuki ya shili, omunankondoadhihe.

Amen.

TATE OMUYUUKI, UUYUNI INAAU KU TSEYA.

Joh. 17: 24-26.

Jesus okwa pewa ku He ashije miikaha ye, oshoka oye a gwanitha ehalo lya Kalunga. No nando oye Omuwana okwi ilongo evuliko okuwehame mbuka e u hambata, nosho a gwanitha a pwa, okwa ningi ekota lyehupitho lya aluhe olya ayehe mboka taa vulika kuye. Hebr. 5: 8, 9. Onkene sho a sindi eso, nokwa gwaniitha oshilonga shekulilo, okwa ningi shili ngeyi ekota lyehupitho lya aluhe. Pulakena moohapu ndhika ewi lyOmusita omuwanawa. Ota tumbula megalikano ndika enene: Tate, onda hala omboka we ya pa ndje ya kale wo nkoka ndi li.

Muuyuni wEtestamenti Ekulu, otu shi shi ngoka a pitikilwa a kale koshipala sha Kalunga nokugalikanena oshigwana oye nga omusaseri ngoka a yololelwa oshilonga. Muuyuni mbuka wEtestamenti Epe, otatu lesa kaaheberi 8: 1, 2. Ihe ekota lyoohapu ndhoka tatu dhi popi olyo ndika: otu nomusaseri omukuluntu a tya ngeyi a kuutumba kolulyo lwoshipangalapundi shOmusimanekwa megulu a longe oshilonga shuusaseri muuyapukielela, metsalielela ndyoka lya shili Omuwa mwene e li dhike. Omusaseri omukuluntu, omunyoli gwepistoli kaaheberi te mu popi, oye Omuwa Jesus, Omukulili gwetu. Ota galikana megalikano ndika lyuusaseri uukuluntu: Tate, onda hala omboka we ya pa ndje, ya kale wo nkoka ndi li. Oshimpwiyu oshinene shi thike mpoka aantu ya Jesus ya thike megulu, otatu shi adha mu Kalunga mwene. Omuwa ta ti: opo ya tale eaadhimo lyandje we li pe ndje. Omuyevangeli ta nyola: Otwa tala eaadhimo lye, eaadhimo tuu ndyoka lyEpona lya He, oye nokwa li ku udha esilohenda noshili. Joh. 1: 14; 17: 5. Oshoka ongoye wa kala u hole ndje no manga uuyuni inau dhikwa.

Ohole ndjoka Kalunga a kala e hole Omumwana, oyo wo Kalunga e tu hole nayo, tse aanandjo aakweyi. Ohole ya Kalunga okuhola uuyuni oya kolekwa koshilonga shoku Golgata.

Tate omuyuuki, uuyuni inau ku tseye, ihe ngame ondi ku shi, na mbaka oya tseye ongoye wa tuma ndje. Ongame nonde ya tseyithile edhina lyyoye, notandi li tseyitha natango, opo ohole ndjika wa kala u hole ndje yi kale muyo na ngame ndi kale muyo.

Otekisti ndjika yesiku lyeyeluko lyOmukulili nda hala u yi leshe yoyene nokuleshulula, opo omwenyo gwoye gu tale Omuwa Jesus e li kolulyo lwa Kalunga noshimpwiyu oshinene te tu galikanene megalikano ndika lyuusaseri uukuluntu, opo tu thike nkoka e li muukwaaluhe.

Johannes Nantinda.

ONDJENDA YA DOKTOR JUVA.



Mai 1961

EHEPULUKO

Eteyo otali tameke koombinga adhihe dhoWambo. Nuumvo otatu dhimbulukua ngika okuhambelela Kalunga, sho e tu pititha methimbo ele lyuudhigu nokwe tu hepulutha. Otatu dhiladhila ngika wo nawa oye nkene a hala tu longithe omagano ngo-ka te ge tu pe, tu kwathe mboka ya hepa tu mu pe wo shoka ta tegelele tu shi mu pe: iigandjwa yegongalo noongalo ndhoka dha gwana dhi tsakanithe nawa oshilonga shevangeli neputudho lyopakriste.

Ethimbo lyuudhigu olye tu longo oshindji shoka shaa shi kudhimbiwa nando. Omukwetu okwe shi popi nokuli, ombili nehanganano nkene tali tungu. Osha monika shili methimbo ndika lya piti, ombili nehanganano sho lya gamene aantu yaa sile mondjala no lye ya gamene koshiponga shomahalutho giifundja ga li ga hala okupyaganeka noku tu tula moshiponga. Omathimbo geyeleko osho hage ya ngashi ge nokuya nga, ihe onawa sho tatu longwa oondunge eyeleko manga eshona.

Ethimbo lyoluhepo olya aadha olwindji oWambo yetu. Onke oyendji haa kambadhala nga okwipungulila omahangu omolwomimvo ndhoka tadhii ya. Osho tuu shoka tashi pumbiwa shi dhigininwe naa naa. Onawa, ngele tashi dhimbululwa, iimaliwa nkene tayi vulu okupungulwa wo, yi lande iikuulya ethimbo lyondjala. Nge tayi pungulilwa mombanga nenge moposa, otayi gamenwa notayi hohelelwa nokuli kashona ethimbo alihe ndyoka yi li mo, no tayi vulu okukuthwa mo una tashi pumbiwa. Eindhiliko methimbo ewanawa otali pupaleke omathimbo goluhepo.

Ethimbo lya piti olya gwana wo oku tu longa nkene tu nokukala niimuna yetu. Oonkambadhala okufula ominkanka noondama odha holola oshilonga shadho, iimuna oyindi oya hupu. Ihe ope nokudhiladhilwa nawa, oludhi lwiimuna oluni po lwa gwana okukalwa nalwo. Uusino noongombe ndhoka dha koka unene, otadhi hepitha owala omwidhi nomeya. Andola tadhi liwa manga dhi nonyama, ando aantu taa imonene oonkondo. Andola tapu longithwa oludhi lwoonzinzi ombwanawa ngashi ndhoka dhokUushimba, ando aantu, unene aanona otaa imonene omahini ge ya koleke.

Ngashi sha popiwa moMukwetu gwa Apilili, omuwilikihapu gweHanganotumo lyaSoomi prof. Juva ote tu talele po pamwe naMushanga, omusita-gongalo Vallisaari. Oondjenda odhi li ngeyi:

Windhoek	9-11.5	Eeñana	26.5
Walvisbay	12.5	Engela	27-28.5
Swakopmund	13-14.5	Onguediva	29.5
Runtu	17.5	Onandjokue	30.5
Mupini	18.5	Onayena nOlukonda	31.5
Lupala	19-20.5	Oniipa	1.6
Mpungu	21.5	Oshigambo	2-4.6
Kuring-Kuru	22.5	Elim	6-8.6
Nkongo	24.5	Ombalantu nUukwaluudhi	9.6
Omundaungilo	25.5	Ongandjera	10-11.6

Aayenda yetu oye li melongelokalunga moMonda eti 14.5, moMpungu eti 21.5, mEngela eti 28.5, mOshigambo eti 4.6 nomOkahao eti 11.6.

OSHINGE SHA KALUNGA.

Joh. 17. 18-23.

Atushe otu shi shii omuñu okua shitua a fa Kalunga: "Tu shiteni ovañu ve tu fe." Gen. 1:26. Kalunga okua fudila omuñu omuenjomufudo nde omuñu ta tjoñalo i nomuenjo omunamuenjo (lewende siel), Gen. 2:7. Oñalo aishe ei, omuñu okue i kanifa mokenjona kuaje, eshi a lja komuti e u shilikua a ha lje ko. Melongo loukriste ohatu lesa okunjona oku ñge kua ningila ovañu: Efano la Kalunga eli la kala muvo, ola njonauka, osheshi eendunge davo oda njika omilaulu; ehalo lavo ola ama kouii; ondaka javo jokomuenjo oja vela nova ninga ovapika voulunde no vefjo no vasatana. Tashi ti omuñu a kanifa oshinge sha Kalunga eshi e shi pelue mokushitua kuaje.

"Ndele onde va pa oshinge eshi ua pa nge." Ovamuatate mu Kristus, tu taleni ounene uondjovo ei: Oshi-

Oshindji oshi nokulongwa natango melongitho lyuuhoho wo. Evi ndika Kalunga e li tu pe tu li longithe nuudhiginini noondunge.

Oshinima shimwe natango shi nokutumbulwa sho tatu popi oluteni shoka lwe shi tu longo: osho omakuti getu. Miilongo yimwe yaaEuropa omakuti omanene ga kunwa nomwa monika naa naa, omakuti nkene taga etele oshilongo omvula. AaWambo oyendji mboka ya talwa aanandunge nokuli, oya holola uugoya uunene mokuhanagula po owina omakuti nokushonopeka ngeyi omvula. Aantu mboka ya li ye nokudhiladhila uwanawa wolualo lwawo, oya mbu-gapaleke oshilongo. Navulwa natu etheni uugoya mbuka.

nge ua pa nge onde shi va pa. Tu taleni osho tua li tua kanifa, tua kua-tunuka na Kalunga meendunge, mehalo, mondaka jokomuenjo; tua li ovapika voulunde, vefjo no vasatana.

"Oshinge eshi ua pa nge onde shi va pa." Omulongua ua Jesus oku noshinge sha Jesus, she mu kua-takanifa naje no naHe Kalunga no she mu kuatakanifa novaitaveli vakua.

Ou te litukuka novaitaveli vakua, okua tukuka jo na Kalunga nOmona. "Vo va kale vamue ngashi fje vamue aveke."

Po kapena ou ta dulu okutumua manga e he na oshinge shomutumua, oshinge sha Kristus na He. Nokape na ou ta dulu okukuatafana novañu vakua fimbo e he na oshinge sha Kalunga na Kristus.

Olupe loukuaita uovalongua va Jesus nomidjala doukuaita uavo moita ei ijapuki, aishe ojo oshinge sha Kristus. Oshilonga shavo metumo eli osho oshinge eshi va peua. "Ngashi Tate a tumu nge osho jo handi mu tumu." Eudifo lavo neenedi davo, oshinge eshi va peua melijapululo la Jesus eshi e ve lijapulila: "Ohandi ve lijapulile vo va japulilue moshili."

Omukriste omukwetu, otu udite tuu eshi tua ningilua ku Kristus na eshi e tu pa? Otu na oshinge sha Tate mu Kristus moku tu lijapulila kuaje; moku tu fila no moku tu njumukila. Nande to dinua kounjuni no to shekua, ino dimbua ou na osho ounjuni u he shi kuete, osho oshinge sha Kalunga. Novahongua votete osho va dinua nova shekua, nde otava ti ngali? "Ndele fje otua mona oshinge shajo, oshinge ngashi shOmona euifa uaHe, shi jadi oñgenda noshili."

Amen. Joh. 1:14.

Nathanael Kapofi.

OSHIKONGA SHOMBEPO.

One otamu pewa oonkondo Mbepo Muyapuki nge te ya mune one otamu ka ninga oonzapo dhandje omu Jerusalem nomu Judea ashihe nosho mu Samaria no sigo okooha dhuu-yuni. Iil. 1: 8.

Jesus sho a londo a yi megulu okwa thigile aalongwa ye oshilonga oshinene noshi netameko edhigu o-molwuutondwe waayuuda aaladhi okukondjela ompango yaa yonwe. Onkene omasiku ngoka ya kala mu Jerusalem inaa longa sha, oshoka oya li ye nuumbanda owindji okuhokolola Jesus.

Ihe mesiku ndyoka enene lyaayuda haa gongala koshituthi mu Jerusalelem, manga ya adhika motempeli oya pewa Mbepo Muyapuki ngashika Jesus e shi ya uvanekela kutya: "Kaleni mu Jerusalem nokutegelela oonkondo tadhi zi kombanda." Mehololo lyetililo otatu longwa nawa nkene ya tya: Oyo ya fokambiya nongomalaka gomulilo. Iilonga yokambiya oyo okukomba mo iiyagaya yi li momwenyo, opo ihe ngele ya gongelwa kokambiya yi fikwe po ihe komalaka gomulilo. Omukriste ngoka a mono Mbepo Muyapuki okwa tondo uulunde auhe, oshoka okambiya ka yagaya mo momwenyo gwe niyagaya ya fikwa komalaka gomulilo. Omuntu a tya ngeyi ita pitika a nyatekwe ku satana, oshoka omulilo gwa li gwa hwama muye ogwa fike mo ayihe yi nondumbo na Kalunga osho wo omadhiladhilo omawinayi.

Oshilonga oshitiyali shomulilo osho shi: esiku ndyoka aalongwa ya mono Mbepo Muyapuki oya hwama nuuladhi owindji okuhokolola yaa nuumbanda evangeli lya Jesus. Omulilo tagu hwameke ukriste u kale wa pupyala u kale onzapo ya Jesus moku mu hokolola niilonga nokupopya. Omukriste omukwetu, owa mono tuu Mbepo Muyapuki opo u dhiminwe po oondjo, opo ihe u ninge onzapo ya Jesus mokati kuuyuni uulunde womuupagani. Ngele wa dhimbulula waa mu na, indila ngashingeyi nomutima aguhe shaa mpoka u li to lesa ndhika ngele wa kuutumba nongele wa lala nenge omuthika. Indila u mone oonkondo dhopombanda nangoye u ye miilonga okukala onzapo ya Jesus maandjeni, muushiinda na apehepehe.

Festus Armas.

KALENI MU AME.

Joh. 15: 1-9.

Eendjovo edi otadi popi ekuatafano lomunu na Jesus moshilonga shehupifo lomuenjo. Ngashi omuti ua kuatafana noitaji jao, osho jo omuenjo uomunu u nokukuatafana na Jesus. Shashi oje a tulua po ku Kalunga a kale pokati komunu na Kalunga ongomuvinu ua kunua mokati kepja li na edu liua, ndele tau tuijuka oitaji keembinga neembinga adishe i shiive okuima oimati iua. Oñge Jesus ta ti: "Ame omuvinu ua shili". Oshike Jesus ta ti "ua shili." Pandunge doshitja eshi ua shili otashi ti: muje kamu nehulilo nokamu nekukuto nefjo. Muje omu nomuenjo ua alushe.

Hano ou to kala muje, ove oto kala pamue naje moinguanima aishe ngashi mokufja kuaje, osho menjumuko laje, u kale u nomuenjo ngashi oje e nomuenjo; Rom. 6: 5.

Oua dimbulukua tuu, omukuetu, ñge ua ninga oshitaji shomuje? Oua ende ngahelipi? Oua kufua peni eshi ua tulua mo? Dimbulukua apa ua kufua, ove u dimbulukue ñge ue ja mo muje, ove oshitaji shongaho sha kufua mofuka, u na okukeua mo okupu ngenge ito eta oimati; Rom. 11: 24. Okukeua mo taku ti ngahelipi? Otashi ti, ngenge ito kala mu Jesus ndele to diinine eendjovo daje, nena eendjovo daje odi neñgono oku ku kukutika nohunina okukeua ngoshitaji.

Tala oitaji jomeshito ñge ja keua mo ove u tuikue mo muje. Hano kala ua tila, pamue to keua mo; Mat. 3: 10; 7: 19. Ndelene ngenge hasho, poñele jasho otapu uja eupaleko la shili ngashi omuti tau uapalekua komuene uepja koitaji jao fijo tau ima naua.

Ngashi Omuene Jesus efiku linja a kosha eñadi dovahongua, ndele tava jela osho a hala oku tu uapaleka efiku keshe. Ndele ou a kala mekosho la Jesus ndele ina kosho, oje e nomupja; Mat. 13: 10; Oil. 15: 9. Mekosho la Jesus kamu noka-tongotongo pokati komunu nomunu omukua, nokutja pokati komujuda nomupaani, ile pokati komulaule nomutiliane, ile pokati komukuañgala nomujamba. Aveshe ve li mu Jesus, otava kala ve noimati i nomuenjo ua alushe. Omuene Jesus ta ti: kaleni muame name jo ohai kala munje Ope na epulo, omukuetu fje na ove, otu li tuu mu Jesus? Oimati jetu na.



KRISTUS OKUA NJUMUKA!

Joh. 20: 1-10.

1. Opo a uanife oshilonga shekulilo.

Eshi oshikumuifanima shili, oñge oona kushimona ove nokutula shili. Kristus oku nokunjumuka opo a uanife oshilonga shaje shekulilo, osho omishangua tadi ti. Omoluenjumuko la Kristus otu na ekulilo la uanena. Ngeno Kristus ka njumukile, ngeno kape nekulilo kufje atushe ava tu nokufja. Paife ekulilo ola uanifulua movaitaveli.

2. Opo u itavele omuenjo ua alushe.

Ope na eembangi dihapu tadi tu lombuele kutja Kristus okua njumuka. Ino limbililua omuenjo ua alushe oo tau ka monika konima jombila. Enjumuko la Kristus ola holola naua kutja, efjo itali dulu oku ku kuatelela mombila, osheshi Omukulili uoje okua njumuka. Ito pumbua okuja kombila ngashi venja, oto pulua ashike eitavelo kutja, oshili, osheshi onakumona ovo tava hepaulula kutja, Kristus okua njumuka, ovelishe 8. Oje Omute uonakunjumuka.

3. Opo jo u njumuke.

Kaume, Omuene uoje eshi a njumuka nave ou nokunjumuka. Ef. 2: 1-6. Nande ou li molutu eli, enda ongomunjumuki. Oua fja mo moulunde nomouii aushe, noua njumukila moujuki nomoukoshoki nomoshili. Omuene uoje ite ku hafele ngenge to ende meendjila defjo, ile ngenge ito itavele evangeli, kutja okua njumuka moluoje nomoluovaitaveli aveshe, opo paha kale nande omulimbililui uenjumuko. KRISTUS okua njumuka, na ove jo kala omunjumuki. Ef, 5:14.

J. Mufeti.

ove oilipipo? Oimati jomukriste i nomuenjo oje ji okudiinina okuindila nokuilikana okulindilika ouui keshe okuenda mohole, okukala meendjovo da Kalunga.

Joh. 16: 23, 26; 1 Joh 3: 22.

Henok Haufiku.

OHOLE EKOTA LYUUDHIGININI.

Joh. 15:10-17.

Ihe ngashingeyi, otaku kala eitaalo, etegameno, ohole, ombika itatu. Ihe ohole onene yi vule ayihe mbyoka, 1Kor. 13:13.

Ohole otayi monika wo moondjokana. Mboka ye holathane, otaa dhigininathana nokulongelathana nuudhiginini miilonga yegumbo lyawo. Ohole otayi opaleke nawa ayihe yawo, 1Kor.13:4-7.

Omuwa Jesus okwe shi koneke nawa, pokati kawo naHe okwa pangelwa kohole. Ote shi holola megalikano lyuusaseri uukuluntu, sho ta ti: "The hamboka ayeke tandi ya galikanene, awe, namboka wo taa itaalitwa ndje okoohapu dhawo. Ayehe opo ya kale yamwe ngashi ngoye Tate u li mu ngame nangame ndi li mu ngoye nayo wo ya kale mu tse. Uuyuni opo mwi itaale ongoye wa tuma ndje", nosho tuu. Joh. 17:20-26.

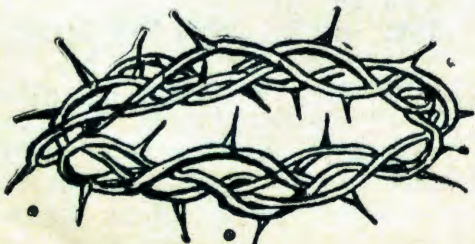
Jesus sho te ya lombwele ngeyi okwa hala enyanyu lye li kale mu yo, nenyanyu lyawo li gwanenene. Oshoka ohole ye otayi monika mpoka sho ta gandjele ookuume ke omwenyo gwe. Oshoka kaku na ngoka ta gandja omwenyo gwe muuyuni a se peha lyookume ke. OJesus awike e shi ningi a sile uuyuni nangame wo nangoye wo okwe tu sile. Okwe shi ningi, oshoka e hole shili oomwenyo dhomongerki ye onkwaevangeli paLuter yomOwambokavango tse nangoye tu li mo, okwe tu gandjele omwenyo gwe omolwohole ye e tu hupithe. Ota ti nokuli, otse ookuume ke ngele tatu ningi shono te tu lombwele e shi uvu kuHe, Joh.6:28-29.

Oshinima oshinenene motekisti ndjia ka Jesus e shi popi, osho ehogololo. Otwa hogololweni, aakwetu. Ombimbeli otayi shi ti: Eitaalo kali shi lyomuntu kehe, 2Tess. 3:2.

Ano tse nangoye sho tu li mo, natingo, hamolwoonkondo dhetu noondunge dhetu, aue, omolwehogolo lya Kalunga, e tu hogolola ye mwene. Otashi monika metendo etitatu lyeitaalo lyaakriste: "Ongame mwene ndaa noondunge, ndaa noonkondo okwitaala Jesus Kristus, Omuwa gwandje nokuya ku ye, ihe Ombepo Ondjapuki okwi ithana ndje nevangeli nokwa minikile ndje nomagano ge nokwa yapula ndje nokwa gamene ndje meitaalo eyuuki, ngashika oti ithana nota gongele nota minikile eta yapula ukriste auhe kombanda yeve te u gamene meitaalo limwe eyuuki omu Kristus Jesus. Omuukriste mbuka ota dhimi po oondjo dhandje nodhooitaali ayehe esiku kehe. Nesiku lya hugunina ota yumudha ndje pamue naasi ayehe yomu Jesus Kristus omwenyo gwa aluhe; shino oshilielela."

Ano omolweithano ndika lya Kalunga etu hogolola otwa gwana okugalikana shili ngashi omupsalmi: Dhiginina ndje sigo ehulilo, Eps.179:33. Oshoka otse twa ningi aakwawo ya Kristus nge tatu dhiginine sigo ehulilo cinekelo ngashi twa tamekeni, Heb.3:14.

Johannes Iitope.



Oye a thigi ko omilongo omugoyi nomugoyi nokwa ka konga ndjika ya kana.

EMONA LA KALUNGA LA KANA.

Ofje ava ovalunde, ofje emona la Kalunga eli je a kanifa nale. Nomafiku manini eshi a pita po, Kalunga a kufa omona uaje euifa a ka konge emona laje eli la kana.

Jesus eshi e uja mounjuni, okua konga nokukongelela fijo a mona emona la He eli la li la kana. Eshi la monika Tate Kalunga a hovela okuninga oshivilo shinene shokuhafela emona eli la monika. Ndelene ava va ifanua koshivilo, ova li ve lipjakidila nomaupjakadi elili nokulili. Omuene uoshivilo okua hovela okutuma keendjila doshilongo nokomalila keengubu nokomapandavanda, opo eumbo lOmuene uoshivilo li jadifue ku ava va dja luanima.

Tala, ove emona la Kalunga ua kongua ua ifanua noua kulilua nou-djuu, oua hala tuu, nonda hala tuu okujadifa eumbo la Kalunga? Tala, efimbo tali uja, omo Kalunga ta i keendjila nokomalila, manga ue lipjakidila. Opo ta eta mo aveshe nota idile po oshivilo nde ta ti: "Oshili, kape na umue uaava ve lipjakidila ta makele oitendele jange fijo alushe." Luk. 14: 24.

KONGA JESUS MANGA TA MONIKA.

Konga Omuene manga ta monika, osheshi efimbo otali uja je ita monika vali. Omukuetu omuholike, konga Omuene manga ta monika, osheshi ngenge to kanifa efimbo nokumuena itashi kuafa sha nande. Konga hano Omuene uoje manga ta monika.

Omuene Jesus ota lombuele ova-juda ta ti: "Ame ohandi ilile onje notamu ka konga nge, nje itamu monoge, notamu ka fila momatimba eni." Joh. 8: 21.

Hano venja eshi inave mu konga manga va li ve nomito oku mu mona, ova kanifa efimbo nove li hepifa. Ofige hano omukuetu konga Omuene manga ta monika, opo u mone edimepo lomatimba, nehupifo la alushe fijo alushe.

Shikongeni A. Shajuka.

Omukuetu, efimbo ole uja nokuli lokulilongekidila oshivilo noitendele jOmuene uetu. Hano tu li longekide keshe efimbo, osheshi oshivilo sha jeululua, noku nefimbo linini, noli-hupi, opo oshivilo tashi patua po filu, noshivilo tashi danua ku ava ve shi lilongekidila. Luk. 15: 6, 8-9.

Filemon Ndeutapo.

OKAANDJETU



EFJO LOMBADILILA.

Foibe ja Nekango oje a li omulongi uouputuputu uoshikunino mEndola. Oje a hangua kefjo, manga a teleka ouvalelo uavo nounona vaje. Eshi tuu ve li ngeno pokukala omutumba va lje, ohaluka efjo le mu nangeka ongali. Ofilu. Okanona kaje ke dule vakua, eshi ke mu kuata, oka pula: "Meme, oshike?" Omuenjo ua ja nale.

Foibe okua li shili omulongi e hole oshilonga shaje. Oje a li e li tula mounona nomuenjo uaje aushe. Ngenge ue mu hanga mounona vaje, oto mu hange e li po ngokanona.. Ote va file oshisho aveshe pamufika uavo, opo a dule oku va pa keshe kamue ke li po oshipumbiua shako.

Luhapu nande ina nangala po naua, okue lidiinika ngaho e ja kongudu jaje. Omuenjo uaje ue shi holola naua, ina hala okuefa ounona vaje.

Omuene e mu dimbula diva, manga ina vela, ina kema . . . Omukemo uaje ua fiilua ovadali vounona vaje. Vahapu va lila nokunjemata moluomutekuli uovana, kee po vali.

Eongalo lomEndola la fiilua oluhodi linene, osheshi Foibe a li omulongi muua, a hokifa ounona mongudu. Ongudu nande ja li ja hapupala pomathimbo epungu, Foibe ina fjounje okuhavaleka nande okamue. Oupenda nouidiini uaje ua monika moiminima ihapu.

Omulongi omukuetu, ove ua peua jo oshilonga sha Kalunga nga Foibe, oto pulua omoluefjo lomupia omukueni Foibe: Oua diinina tuu oshilonga shoje? Oue li jandja tuu mokamungu ue ka peua? Omukuetu, Kalunga te tu pula ohole moukriste uetu. Tu hole Kalunga nomukuetu. Eholololo lefjo eli, nali tu pe elilongekido. "Longekida eumbo loje, osheshi ove oto fi."

Omujakuli molupaleongalo,
Endola.

Kenongelo lovajakuliongalo oku noshiongalele shovashangi vomolupale leongalo (ovajakuli voshinjanga sheongalo). Ovashangi novajakulishangi nava ovafitaongalo otava tumine va ninge ovashangi vomalupale leongalo nava uje koshiongalele shavo. Oshiongalele eshi otashi hovele, Omuene ngenge e shi hala, eti 13 la Junie 1961 notashi hulile eti 24 la Junie

Omunashiongalele keshe na ete oifilinga 3 (eesende 30) omolu oikulja.



JUNI

1. Do. 4Mos.6:22-27. Iil.4:32-37.
2. V. Ef.1:3-14. Iil.5:1-11.
3. Sa. Joh.5:17-23. Iil.5:12-16.
4. S. **Os. 1 ya landula Uukwatatu. Rom.1:16,17. Luk.12:13-21. Dan.5:1-9,13-17, 25-30.**
5. M. 2Petr.1:16,19-21. Iil.5:34-42.
6. D. Hes.2:1-7. Iil.6:1-15.
7. W. Joh.5:41-47. Iil.7:1-16.
8. Do. Ef.4:11-16. Iil.7:17-29.
9. V. Hes.3:22-27. Iil.7:30-53.
10. Sa. Jes.5:1-7. Iil.7:74-8:4.
11. S. **Os. 2 ya landula Uukwatatu. Rom.1:18-25. Luk.14:25-35. Eps.36:6-11.**
12. M. Joh.4:4-14. Iil.8:26-40.
13. D. Omuuivithi 4:17,5:1-6. Iil.9:1-9.
14. W. Mat.11:25-30. Iil.9:10-19.
15. Do. 1Kor.14:1-4,23-25. Iil.9:20-31.
16. V. 1Kor.1:20-25. Iil.9:32-43.
17. Sa. Jak.2:1-9. Iil.10:1-20.
18. S. **Os. 3 ya landula Uukwatatu. Rom.2:1-16. Luk. 15:11-32. Hes.34:11-16.**
19. M. Mark.2:1-12. Iil.10:34-43.
20. D. Aatok.10:6-16. Iil.11:1-18.
21. W. Mark.2:13-17. Iil.11:19-26.
22. Do. Rom.4:1-8. Iil.11:27-30.
23. V. Rom.5:1-5. Iil.12:1-17.
24. Sa. Luk.1:57-80. Iil.12:18-25.
25. S. **Os. 4 ya landula Uukwatatu. Rom.2:17-29. Joh.8:1-11. Mika. 6: 8.**
26. M. Joh.8:1-11. Iil.13:13-25.
27. D. 2Kor.2:5-11. Iil.13:26-41.
28. W. Mat.5:43-48. Iil.13:42-52.
29. Do. Mat.18:15-20. Rom.9:1-13.
30. V. Rom.15:1-7. Rom.9:14-24.



EPANDULO.

Ohatu pandula unene eshi ovamati ava voku Kongo eshi va kundana kutja okangerkifikola komu Kongo otaka uedelua, ka ninge kakula, osheshi ovakriste ihava uana mo ue vali pefimbo lelongelokalunga. Oshinima eshi ove shi kundafana novamati vakua ava va kala navo moilonga nova ninga ongalo jekuafo omolu okangerki ketu. Ove tu tumina oimaliva £3. 5s. 5d.

Aveshe ava otatu va halele enangeko noupuna lOmuene, omolu aishie ei ve tu ningila.

Josua Hanjango.

EFIKU LANGE LA HUNINUA ONAINI?

Efiku lange no loje, kape noma-limbililo onena ile mongula, omutenja ile oufiku, efiku loje la huninua le uja nokuli.

Tala lañegele kuinja koushilo lañegele kEeñana oku nomukunda tau ifanua Oshangu. Omo mo eshi efiku la huninua lomuneumbo umue pamue nokakadona oshiveli shaje le uja. Fimbo ve li mo meumbo pamue novaneumbo vaje, tala oluvadi la shela ndelene la kufa po omushamane nokanona kaje. Hano la fija po ava la hala aveke.

Onda hala unene tu kale nepulo eli alushe: "Efiku lange la huuninua onaini?" Tala opo tapa pumbua elilongekido la sha. Ta! ovakuetu ava ngeenge ova hangika ve lilongekida, o, ova li ve noupu shili. Ohatu diladila ngahelipi hano ngenge va hangika inave lilongekida, na ame na ove ngenge to hangika ino li longekidila efiku olo?

Efiku olo ngenge la pita ko ihaku tiua: Handi uja manga ndi lilongekide, ahoue. Tala nomafiku neevili dimue po efiku le uja nokuli. Omunelao ou ta hangika e lilongekidila efiku tuu olo.

Filemon Ndeutapo.

OSHITUTHI SHA MISSION KOKAHANDJA.

Esiku eti 25 September 1960, mOkahandja omwa gongala aantu oyendjiyendji ya zi kiilongo niilongo, ye ya koshituthi sha mission. Otwa gongala momiti dhi li momulamba lwo kuuzilo wOkahandja. Oya li 2100. Nando ya li po oyendji ye thike mpoka, aaludhe naatiligane, oya kuutumba melandulathano ewanawa, noya mwene thilu, nokupulakena ashike nawa nombili. Oshituthi shetu sha tamekithwa negalikano. Opwa imbwa omaimbilo ogendji gi ili nogi ili. Twa nyanyukwa shili, nando pwa kala amaloloko, omolu omalaka gi ili nogi ili. Onda dhimbulula naanaa kutya, nando tu li po omihoko nomihoko, otwa kala ngashi omuhoko gumwe.

Opwa li wo oongundu dhaaimbi odhindji. Mukupulakena oondjimbo ndhoka twa imbilwa, onda dhiladhila kutya, oshili otse aanelago, sho twa etelwa oohapu dhevangeli, sigo onena otu li nalyo. Otatu dhimbulukwa aluhe esiku ndika mokukalamwenyo kwetu akuhe.

Kalunga na hambelelwe shili, omolwe-silohenda lye sho e tu tumine aatumwa yetu, sigo onena omo ye li mokati ketu.

Paulus Martin,
Okahandja.

EKONDJITHO LYUUVU WA POLIO.

Miilongo ya Europa noya Amerika uuvu wa Polio (uulema waanona) owa kondjithwa omimvo ndhika noonkondo, oshoka tau nkundipaleke omuntu nayi. Opwa dhimbululwa omukalo omuwanawa oku u kondjitha ogwo okuvenda nenge okunwetha aantu omuti, manga inaa kwatwa kuuvu.

Uuvu wa Polio owa monika unene omaanona aashona ihe otau vulu wo okukwata aagundjuka naakuluntu nokuli. Otau ningi omuntu oshilema kiilyo yimwe nenge kiilyo ayihe. Ihe omboka ya vendwa lutatu nenge ya pewa lutatu omuti gwa Sabin, itaa aadhika kuuvu.

Ondohotola omukuluntu gwoshilongo okwa tokola aanona ayehe aatiligane naaluudhe yoshilongo ya mone ompito okunwa omuti nguka, uuvu wa Polio waa taandele nando moshilongo muka.

MoWambo ekondjitho lyuuvu otali tamekwa eti 5 lya Juni. Aanona pokati koomwedhi ndatu nokoomvula omulongo otaa pewa omuti. Aapangi ayehe naalongi yooskola otaa tegelelwa ya kwathe moshimpwiyu shika ngashi ya kwatha olwindji. Uudhigu u li po mpoka, omuti sho gu nokupungulwa miikangwa mooskopa oontalala. Omuti gwesiku ndyoka alike otagu vulu okulongithwa gwa hengumuka. Poongulu mpoka pe nooskopa dhuutalala, omuti otagu pungulwa gu topolwe omasiku gu uuthwa, naantu ye ga tseyithilwa ku yele, ya tseye okugongala omasiku ngoka.

Ano aanona mboka inaa gwanitha oomvula omulongo naa gongelwe poongulu dhontumba nge taa tseyithilwa omasiku gawo. Omuti kagu shi omululu nokuli.

Naku dhigininwe nawa okuholoka lutatu.

Aanaskola naa holoke omasiku ngoka taga tumbulwa mpaka, naavali naa ete aanona aashona wo koongulu ndhoka dha tumbulwa.

ONDONGA

- eti 7 lya Juni Oniipa
- eti 12 Ondangua, Oshitayi, Okaku
- eti 13 Eheke, Etambo, Okashandja
- eti 14 Olukonda, Onkumbwimbi, Ontananga, Iikokola, Onathinga, Onamulunga
- eti 15 Onyaanya, Ihongo, Onathinga (Oshig.) Elombe, Oniihwa, Oshilulu
- eti 16 Onayena, Oneputa, Oshigambo, Onanona, Okankolo

OUKUANJIAMA

- eti 5 lya Juni Okalongo, Oneleiua, Epasha, Enekuaja, Etale, Omundaungilo, Hauuanga munene, Oshuli
- eti 6 Eenana, Odibo, Engela, Ohaingu, Oshimuaku, Ongenga, Elakalapua
- eti 7 Nkongo, Iipinga, Onahova, Oshandi, Onangulo, Endola, Omududu, Olupandu
- eti 8 Eenjana, Elundu, Ohandjumbali, Ohalushu, Okatope, Ohanguena, Onakalunga, Holy Cross
- eti 9 Ondema, Omboloka, Oñala, Ondobe, Oumbada, Etombe, Eembahu

- eti 10 Onengali, Edundja, Eembidi
- eti 12 Onepandaulo
- eti 13 Okambebe, Oikokola
- eti 14 Onguediva, Omusheshe, Omupanda, Onamutaji

UUKWAMBI

- eti 5 Okando (Ev.L), Okatana, Amutanga, Otshikuku
- eti 6 Elim, Olupumbu, Ogongo, Okando (R.k), Emono, Oniimwandi (R.k)
- eti 7 Oshuuli, Oshakati, Uukwanatshikare, Onampira, Omeege, Omusimbodi (R.k)
- eti 8 Ombuga, Othika, Onaanda, Afoti, Uutsima
- eti 9 Ekamba, Uukwiyongwe, Omusimbodi (Ev.L), Ompundja, Ohetai, Otshikutshatshipya
- eti 10 Oniimwandji (Ev.L), Iviyongo
- eti 12 Iipandayamiti, Oshikushomunkete

ONGANDJERA

- eti 5 Uutsathima
- eti 6 Okahao, Oshukwa, Omwaanda
- eti 7 Uukwandongo, Etilyasa, Otamanzi, Epató
- eti 8 Pyamukwiyu, Eendombe

UUKWALUUDHI

- eti 6 Tshandi, Onangalo, Oshilemba
- eti 7 Ondukuta, Okathitu
- eti 8 Elondo

JESUS TA PURA HORE ZAPETRUS.

Joh. 21:15-25.

Moukriste imo atu pingindire, Hompa Jesus asi: "Nina hara ku ku kwama dogoro kokufa." Nye nampili tuna pingida ngesi, kapi atu dameke nokugwanesa epingido lyetu. Yeyi unkundi nononzo nouhanahuguvaro netjiro tayi dimisa hore nepingido lyetu.

Imo sina kara hena kwaPetrus. Epingido lyendi lina zonauka kepunduko lyendi, eyi ana lihapa Muzowoli gwendi. Nampili ana tanta asi: "Navenye nampili va ku lihape, kapi si nyame tani ku lihapa. Ame hena nampili ni ka fe nove kapi tani ka lihapa." Mat. 26:33,35. Nose hena pamwe Hompa Jesus ta purapura hore zetu, ozo twa mu pingidira. Pamwe ana mono asi tuna gwire mourunde ndi kapi tuna ku mu kwama hena, iponye ta tu pura ngoso. Nose tu dimburure unkundi nouhesi nouhanavuliko ndi kulihara kwetu nyosevene. Mapuro ga Hompa Jesus ta ga pindura ruhodi nelitekururo kogo, ana kara popepi na Jesus ngwendi Petrus. Petrus eyi ana limburura epuro lyautatu, lina horora uhesi netongehuguvaro lyendi, eyi tanta si: "Hompa, nayinye wa yi diva; ono diva asi na ku hara."

Muntu ogo ana hara Jesus, ta kara nediworoko ngano a mono Hompa Jesus, ipo a gwane edongonono lyononzo. Jesus eyi ta dongonona po nonzo detu, naina ta durura hore zetu, ozo za kanka kourunde. Hompa kapi ta hara asi tu vande mourunde ndi meharo lyanyamwetu, inye ta hara tu litekurure mosili, ipo a tu ruganese.

Erago lyenene sili Jesus eyi ana hara ku tu dwareka hore ozo nkwa-guru kapi tazi dimi morwa uzuni.

Elia Neromba.

OMBALANTU

- eti 5 Ohanamulenge, Olupaka, Omahokwe
- eti 6 Omufituero, Oukuandongo (R.k)
- eti 7 Onerago, Omakoya
- eti 8 Oshikulufitu, Iipanda
- eti 9 Oluango (R.k) Oluvango (Ev.L), Epoko
- eti 10 Uukwandongo (Ev.L)
- eti 12 Onakayaale, Ontokolo, Eengolo, Olukulo

UUKOLONKADHI

- eti 5 Onesi

EUNDA

- eti 5 Etunda, Eunda



Ovanaudu omafele nomafele tava kongo efiku keshe ekuafu moihakulilo jomo Vambo nojoko Kavango. Mefano eli hatu mono oshihakulilo shok Eñana.

OUUA UOMUENE ONDI U FUTE SHIKE?

Ps. 116: 12.

Ovakriste ovakuetu vongerka jo-uambokavango, ohandi mu kundile po noku mu hokololela osho nde shi talifua ku Kalunga ketu.

Inaku pita omafiku mahapu eshi nda kuatua koshiponga shoujehame uoshidinda. Tete nda peua ekuafu kOnandjokue fijo sha aluka vali shi dule nale, opo tua peua elaka sha po, ndi konakonue kOushimba, tete kOshivanda, (Grootfontein.) Eshi tua fika mOshivanda, tua tuminua ku Windhoek. Ovahakuli ova ti sha po, otava pula ku Union. Oko va pula, manga tua teelelua mu Windhoek e-fimbo lehani mbali netata. Manga tua teelela tua kuminua shili ekuafu la Kalunga eshi tua jakulua naua kovauambo vakuetu nokovahona. Ovahakuli vanene ava ve tu longekidila ondjila joku Union, eshi osha li ekuafu lavo vene, itatu pulua sha. Ovamati nje, mue tu jakula, ofje na tatekulu, Kalunga ne mu kuafe moilonga jeni.

Eshi enjamukulo le uja ame andike nda li ndi na okuja, tashi kumuifa eshi eembapila da longekidua di popile nge. Ondjila aishe inandi pumbua sha, nda fikama ku Windhoek 2. 9. 58 ngashi sha li sha longekidua; Nande mokuja kua li shili oudjuu, okuja ame andike no inandi shiva ko. Tatekulu a imbila nge eimbilo eti 63 mu "Imbileni Omuwa" olo la hekeleka nge kutja, kandi li andike.

INO DHINA OMAPUKULULO.

Ngele wa hala u kale u na elago lyomwenyo gwa aluhe, taamba o-mapukululo agehe gOmuwa Kalunga nomwenyo gu udha ombili, nohole, neifupipiko lya shili. Osho tatu lo-

Moshihakulilo nda kuafua ngashi ovahakuli venja votete, nova jakula nge ngashi hai hakulua kumeme, ve nohole inene. Eshi nda hakulua ova shuna nge mondjila jange fijo nda fika keumbo, ondi li naua fijo onena.

Oku na oshinima shimue shi he fi okuefiua inai shi tonga: Ovapukifi ovo tava longo ovañu ve li tuale mouhaku uanjata, otue va mona luhapu ve tu hongolola va ti, ohatu hepifa oimaliua ngeno, tu shikule omalongo ovo tu veluke. Ndelene ngenge to puilikine ouhaku uavo, oihuna, ovolela ovahunganeki ovanaipupulu tave uja mounjuni. Oñge ohai ti: ovaholike vakuetu, ounjuni ou paife oujadi oiponga, ndelene tu kongeni ekuafu poujelele. Oundudu uoshipaani nouopañepo da njata ou li mokati ketu paife, tu lungameni, fje tu ilikane Kalunga e tu tumine ovanandunge tave tu kuafa, inatu puila vali moulai uovapaani.

Omuene na kuafe oihakulilo ojo tue i tuminua novajakuli aveshe. E-tumbulo lomukulu uonale eshi a ti: "Kalunga ihe ku efa nganjoko," la tua.

Ouua ua Kalunga ondi u fute shike?

Lilli Timoteus,
Okatope.

EHAMBELELO LYOMWAALU-DHWA.

Omuwa ngoye Jesus nguka wa pewa epangelo lya aluhe na apehe, otandi ku pandulile esilohenda lyoye enenenene lyaa shi okuyelekwa nasha. Notandi ku tangele wo uwanawa mboka woye sho ho tu ulukile aluhe ohole yoye mpoka yi thike. U tangwe Omukulili kaakuuyuni ayehe. Simanekwa ngoye Omuna gwa Tate. Ngoye nguka omukwiita omunankondo komeho gaakwiita ayehe. Okwa li wa hepekwa ngoye waa shi ohepele, wa dhipagwa ngoye waa shi omusi, wa tulwa mevi ngoye waa shi evi. Yaloo, Kristus sho inoo taamba omahongololo gondiapolli.

Omuleshi gwOmukwetu otandi ku tseyithile nkene nda kala nda lala moshipangelo oomwedhi 3. Onda li nda aala, inandi dhiladhila ngele otandi ningi omunamwenyo kevi ndi. Ihe esilohenda lya Jesus enene. Ngashingeyi onda kola nawa. Kundweni nehambelole ndi Eimb: 529: 5.

Matheus David.

mbwelwa mEhololo: "Ayehe mboka ndi ya hole ohandi ya geele nohandi ya dhenge. Kala wa suuladhi ano ngu itedhulule," Ehol. 3:19.

Aakriste aaholike ne, inatu dhi-mbweni omakumagidho gomoohapu dha Kalunga tage tu kumagidha, no-tage tu lombwele, twaa dhine omapukululo gOmuwa, tse twaa lolo-ke nokusuunye, oshoka mugo otatu mono elago nelalekonuuyamba, Heb. 12:5.

Oye ta hende oshilalo, no te shi kwatha wo, oye ta dhengagula, noshikaha she otashi panga.

Kokutya, ondhimbo ya Kalunga oyo ombwanawa komuntu ngoka ti itedhulula shili. Omuwa Jesus ote mu panga shili komwenyo, note gu kwatha, e tegu thina oontsika dheolelo lyuulunde, no temu ningi ihe omuntu omupe. Pulakena nawa Omuwa shoka ta ti: "Talen ngashingeyi ongame ngu, no kaku na ookalunga aakwawo, ongame awike. Ongame tandi dhipaga po, notandi tulomwenyo. Ongame otandi dhenge notandi hungu wo. Kaku ka ngoka ta vulu okuhupitha miikaha yandje," 5Mos. 32:39; 1Sam. 2:6.

Omukwetu omuholike, Jesus okwe ku hupitha muulunde, nomoondjo, nomeso, nomepangelo lja sata-na. Vulika kuye nokoohapu dhe!

Silvanus Efraim.

OSHIKOLOLO SHAAGUNDJUKA

JESUS OMUKOLEKI.

1.

*Jesus tal'uunkundi wetu
neho lyoy' lyohole ndjo.
Shike tu nuuthigwa wetu?
Natu ye kehupitho!*

Halleluya, Halleluya, Halleluya, Amen.

2.

*Natu mu pandule atuhe,
Ye ta taamb' eimbilo.
Tse tu mu indiile aluñe;
Pu ye pu negundjilo.*

Halleluya, Halleluya, Halleluya, Amen.

3.

*Ye ta koleke mekondjo,
no mondjila te enditha.
Ila, ota dhimi p'oondjo,
ila, te ku nyanyudha!*

Halleluya, Halleluya, Halleluya, Amen.

(Die Halleluja 360)

Lya ndongekwa ku N. Leonard Shongolo.

EPANDULO OMOLWETUMO.

Otse aawambo otwa gwana oku-pandula ohole ya Tate Kalunga sho e tu hole. Ohole ye otatu yi dimbulula mpoka, sho ta kokitha natango omugundjuka ngoka a valwa mesiku eti 9 Julie 1870, nokwa tsakanitha oomvula 90, nevalo lye olya dhanwa kOmandongo nkoka a valelwa ko.

Omugundjuka nguka oye Etumo lyookuume aasoomi, sho ya thiki mO-wambo momumvo 1870 kOmandongo. Ookuume aasoomi sho ye ya oku tu konga, opo ye tu hololele ondjila yehupitho, tu pilamene omilema, tse tu taalele uyelele, notu iteke melelo lya satana, notu igameke ku Kalunga, nomoku mu itaala, opo tu mone edhimo po lyoondjo, tu wape okuthigulula oshilongo sha Kalunga. Iil.26:18. Onke ano aawambo, otwa gwana okupandula shili Tate Kalunga sho e tu ukata nesilohenda lye nokwe tu tumine aapukululi mboka e ya pe oonkondo nOmbepo ye Ondjapuki, ya wape okutokola oonkandja adhihe dhuupagani mutse.

Onke ano, aawambo atuhe, tu panduleni. Eimbilo 466: 1, 4, 6.

Rebekka Ananias.

KEngelo lovajakuliongalo oku noshiongalele shoukadona shokukonakona Ombibeli. Oshiongalele eshi otashi hovele mEngela, Omuene ngenge e shi hala, eti 27 la Junie 1961 notashi hulile eti 25 la Julie.

Eongalo keshe nali tume oukadona vamue ve hoole eendjovo dOmuene nde inava kala mo nale moshiongalele shatjangaha.

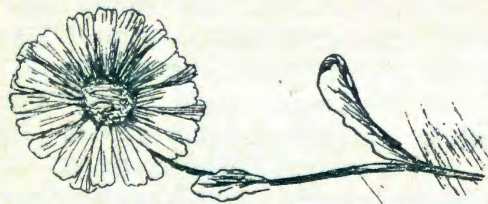
Omunashiongalele keshe na ete oifilinga 6 (eesende 60) omolu oikulja.

Omukulufu uenongelo.

OMUNJASHA OMUKUETU!

Ohai ku dimbulukifa ngaha: Djala onjati joupe alushe. Kala ngashi efimbo letemuno lodula. Osheshi odula tai temuna pefimbo lajo, novakuaunjuni aveshe tave i hafele. Osho omunjasha omukuetu, ove odula tai temuna momesho ovañu nomeongalo leni nomoshilongo sheni. Holoka pomafimbo maua nopomafimbo madjuu, ino fja ounje okukondjela eemuenjo dovakueni.

Mateus Shikongo.



OSHILONGA SHOKAKADONA MEUMBO.

Okakadona ngenge kake mo meumbo, nena eumbo ola hepa, shashi okakadona oko taka pashukile meumbo. Okakadona otaka pashukile meumbo ngaha: okutua, okuteka, okutjava, okuteleka, nokukomba eumbo nosho iikuauo iihapu. Ope na ovanjasha vamue tava hepeke ovakuluñu vavo inava hala okulonga oilonga aishe ojo. Oñge ovakuluñu va njenjetela ovanjasha va tja ngaha.

Omukuetu, dimbuluka omukulu uonale okua tile: Kahuhuena hadela njoko, njoko onale e ku hadele.

Omukuetu omuholike, ejakulo oshinima shiua, ile eduliko, osheshi na Jesus okua dulika kovakuluñu vaje. Dulika kuho na njoko opo u kale nelao nomuenjo mule kombada jedu.

Rauna Mbangula.



OSHIKOLOLO SHEGUMBO



IILONGA YOMUNONA.

Twa popi nokuli uudhano nkene tau putudha omunona. Muudhano omunona ta nu mo aluhe okwiinekela nondjungu nuuladhi nuundjolele. Ombinzi tayi dthingoloka nawa monkandja kehe, osho oontumba nomasipa taga koko nawa. Osho oye ti idheulile ohole nolukeno nomauvitonapamwe noondunge adhihe, nosho tuu.

Iinima mbika ayihe ote yi pumbwa miilonga, onke uudhano kau shi kumwenekwa, ihe u nokukumi-kwa. Ope noshiponga oshinene sha holama aaputudhi. Oyo ya pilike omayele noya tala uudhano owo oshiponga nehethitho lyethimbo. Papilamo ndika aanona oya indikwa okudhana na uuna kaye na iilonga.

Shika shi nokuyela tango: Omunona omunamwenyo ita kala a mwena. Aawambo wo nonale oya kuminwa omunona kee nehala okwinyenga nokudhana. Oya ti: "Ngele kee shi ego-ya, shila oku nuuvu." Oyo ya tseyo wo

nawa uudhano owo endhindhiliko lyoondunge nolyuundjolele. - Ano uudhano kau shi kudhinwa!

Aanandunge taa longekidhile aluhe aanona yawo iidhanitho iiwanawa. Osho natse tatu vulu okulongekidha aanona yetu. Omunona kehe e nokupewa iidhanitho ye mwene, opo itaa penduthilwa oontamanana. Onawa ngele ite yi pewa ayihe oshita, ihe shimwe na shimwe pampumbwe napankondo dhe. Omukuluntu ha zimuna wo methimbo lye okuulukila omunona, nkene iidhanitho tayi longithwa. Olupita oha tala wo, nkene taa dhana. Shika otashi pe aanona onkondo notashi hupitha iidhanitho yaa yonuke mokudhanithwa pambambo.

Uudhano kehe u nokukala niilongitho, niidhanitho ayihe yi nokukala yi nekwatathano niinima mbyoka omunona te ke yi longitha komeho, ongele uutungwa nenge uufethanona woondunga noweloya nowomalapi nenge wiiti. Ongele uuyuma wi ili nowi ili nenge iifethamuna, no-

Oonkolwi itaa thigulula oshilongo sha Kalunga.

1Kor 6:9-10.

Omukriste omukwetu gwopethimbo lyongashingeyi, ethimbo ndika olyo ethimbo lyiikolitha oyindji yomaludhi kehe. Otatu ka mona tuu oshilongo sha Kalunga? Ndi shi mpoka pe nuunkolwi, opo pu na wo uukoloshi.

Omusamane omukwetu, nomukulukadhi meme, dhimbulukweni sho mwa zimine megumbo lyeni mu teleke mo iikolitha yontumba, opo mwi imonene aniwa sha, tashi zi miikolitha, dhimbulukweni kutya, oonkolwi naanalwiho kaa thigulula oshilongo sha Kalunga.

Kuume kandje omumati nomukadhona, sho wi iningi omunwi gwomangandja nogwiikolitha iikwawo nomuhangi gwayo nokuli, dhimbulukwa oohapu ndhika: "Oonkolwi itaa ka mona oshilongo sha Kalunga."

Matti Tushishi Iindongo.
Walvisbaai.

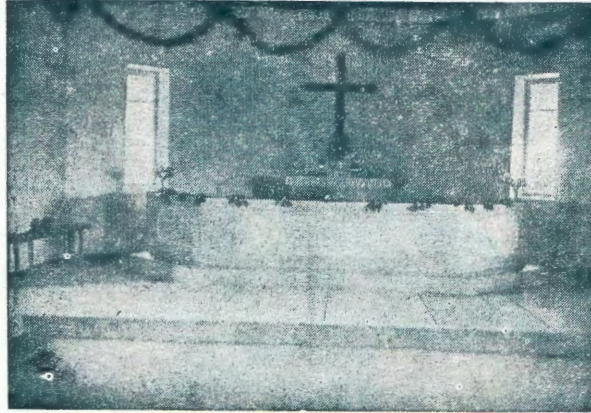
sho tuu. Oyo tuu mbika taye ke yi pumbwa komeho notaa ilongo ngeyi oku yi longitha mokudhana. Inashi opala okudhana nuunamwenyo ngashi uumbishi nuumbwa, oshoka taye u alula olwindji noyo wo taa alulwa kuwo.

Uutsini tau indjipala olwindji mokwaa na idhanitho. Omunona ina tseyo uuanawa nuwinayi, onke okudhenga nokugandagula itaku kwatha unene mpoka. Esiku limwe i ilongele tuu omadhengo, ihe olwindji ta pumbwa owala okuulukilwa shoka e nokuninga peha lya sho a ningi. Omakamba taga koko wo, ngele ta kekelwa okudhana. Osho ta dthingoloka aluhe yina nokunyeneyeta, sigo te mu dhikitha miilonga.

L. Mp.



"Eeno, namusheshe oya mono ko egumbo, nangombeyalunganza oshihandila, moka tayi langeke mo oyana; omayambelo tuu goye, O'nuwa Sebaot, omukwaniilwa gwandje na Kalunga kandje."
Eps. 84:4.



"Oshoka esiku li-mwe lyomomikala dhoye li vule geyuvi palwe, okukala meyelo lyegumbo lya Kalunga ku vule okukala momatsali gaalunde."
Eps. 84:11.

Konda mpaka u pungule chokololo ndika. Etsikilo tali ya.

Epandja 2.

ELIKO LYA ALUHE.

(etsikilo)

ETENDO I.

Omunelago.

Omuhokololi II:

Mehokololo ndika tatu adha omukadhona omuRoma omuvalekele nomuuyamba, edhina lye Klelia. Oye e na ashihe te shi pumbwa. Omumati gwe, ongoka wo a valekeka nomunedhina, e mu tegelela ya dhane mbala oshituthi shawo shohango. Ihe Klelia e nomupika gwe Veronika, ngoka omukriste.

Egumbo lya he ya Klelia lyo opala ngini! Ongulu yoyene yi li koha yomulonga omunene no ya tungwa nomamanya go opala nuunkulungu owindji. Oku noongudhi dhi nuulenga uuwanawa, ku niyelekela yaantu yokunyanyudha omeho, oku nomaluthithiya tamu zi omeya taga nukile pombanda, oku nuuyamba woongala dhoombapa dhi ili no dhi ili nowiyimati iitoye. Aapika taa ipyakidhile niilonga yi ili no yi ili mokulongekidha oshituthi tashi ka dhanwa omolwomumati gwa Klelia te ke ya oku ya talela po. Moku mu tegelela Klelia ti ipopile e ta yamukulwa ku Veronika.

Klelia:

Ongay' omunelago megumbo tuu ndi.
Enyanyu te mono miinima nga mbi:
Otate na meme ye hole ndje, kezimo wo ngame omuholike,

nomumati ngu gwandje ta tege. Elago alike oli na ndje.

Veronika:

Elago alike oli ku na?
Elago lya shili lyaa shiwike kungoye, omwene omuholike.
Elago lya shili ongay' ndi na.

Klelia:

Ongoye, omupika, elago u na?
Aawe, itashi ka vulika.
Iilonga iidhigu omupika e na, enyanyu nelago lya kanenena.
Shipewa shomupika oshi li po ngaa aluhe shiinayi, sha tilikika.
Omupika omukweyi nohepele, kooyene nando a halike.

Veronika:

Ongame omunona guyelele, na Tate omuyamba e hole ndje. Ngomupika no nando tand'ende mpa ndi na ngaa enyanyu lya gwanenena.

Klelia:

Oohapu ndhi dhoye kand'uuvite, oonkumitha shili, dha nyenge ndje,
Omeho ngo goye ga adhima, enyanyu shipala sha holola.
Oohapu ndhi dhoye kand'uuvite.

Veronika:

Omwene, wa nyengwa kuuva ndje Muuyuni ngondjendi tand'endele.

Egumbo lya Tate megulu ndi na, na kuume ngu kandje oKristus, Omuwa,
Omwene omuholike, pulakena:
Eliki lyuuyuni okali na sha, omwenyo nge tagu ka kanenena.

Ewi lyokomwenyo: (ongundu)
Eliki lyuuyuni okali na sha, omwenyo nge tagu ka kanenena.

Omuhokololi I:

Omupika ta yi, iilonga e na.
Omwene ta kala, ta dhiladhila.

Omadhiladhilo ngano omape taga kudhile Klelia, oye no a hala oku ga kandula po, ihe ta nyengwa. Enyanyu lye enene, sho ta mono omumati gwe Marius te ya po, ta kawile okakambe okawanawelela.

Marius: Omukadhona gwandje omuholike,
u ye koshituthi u endelele!
Kathimbo kowala u tegelele, e tandi ya oku ku iila, tu ye!

Klelia: Mbalambala to ya u iile ndje, tu kale aluhe tu nyanyukwe!

Klelia na Marius: Tu ye, tse atuhe, tu nyanyukwe,
elago ndi lyetu tu pandule!
Uuyamba neliko lyuuyuni tu na, twa hala wo oku li nyanyukilwa!

Ewi lyokomwenyo: (ongundu)
Eliki lyuuyuni okali na sha, omwenyo nge tagu ka kanenena.
Tapu tsikilwa.

OUNJUNI OTAU TONGO SHIKE

EENGERKI EENĠUALUTHER MU S. W. A.

Oshoongalele shotete shomapan-gelongerki aeshe atatu eengerki eenguaLuther domuS.W.A. osha ongala koKariveva eti 11 la Malitsa ngashi tashi hepaululua mEhangano. Omuu-likingerki H.K. DIEHL eshi a kunda tete ovaenda, omuulikingerki K. F. HOEFLICH a hoololua a uilike eendjovo moshooongalele. Opa tokolua pa kale ombelelua jokushivifilafana oifo oiningua jeengerki edi, nopa kale ovanaisho va longekide omito okuu-difila ovañu va S.W.A. evangeli mo-radio, nopa hoololue jo eengudu dokukonakona omapulo amue elongo loukriste, nopa hoololue jo okangudu taka longekida oiongalele ja fa eshi no komesho jo. Omushivi oje omuulikingerki L. AUALA.

Oñepo iua jombili oja kala mo-shoongalele. Aveshe ovo va li mo, ove udite ñumbi tu li pamue mu Kristus. Ovaenda va fimana dr. V. VAJ-TA ouku Geneve nomuulikitungi uetumo la Rein dr. DE KLEINE ova popifa jo omapangelongerki. Ope na eteelelo, eengerki edi di neh paululo limue, di hangane, eshi tadi ehenene kumue.

EMBO LOSHIONGALELE SHA MADAGASKAR.

Otapa ka holoka embo moshie-nglisa olo otali hepaulula oshiongalele sha ningua ouduali ku Antsirabé, oko ovatumua ongerki jetu va li jo. Moshiongalele mua tokolua oinima ihapu i noshilonga keengerki da Afrika.

OVAKATOLI OVA TAMBULA EVANGELI.

Moilongo ihapu jomu Europa no-jomu Amerika ovapristeri ovakatoli ova ninga ovakuaLuther eshi va lesa oMbibeli. Moshilongo sha Italia nokuli - osho ekota loukatoli - osho mua ningua omido edi. Ongerki oñguaLuther mu Italia oja uedelua ovañu omajovi. Neudo omalongeloka-lunga ovaevangeli otaa ningilua ova-kuilongo jo ovo tava talele po edu la Italia. Oko kaku neengulu dova-kuaLuther, oko omalongelokalunga otaa ningua meengulu dovaanglikani, osho ova udafana.

Embo Sha Kalunga shi peni Kalunga moshiNdonga nomoshiKuanjama lya pwa po mostora yomambo.



Edila eli ola etela mu Afrika ovatumua vahapu. Ovatumua vamue ovaSoomi ova tuka nalo jo. Eedila tadi ende eemaila 100 motundi imue, oikuti jefimbo eli (oosputnik) otai ende nokuli eemaila di dule 500 motundi.

OMUNU OKUA ENDA POMBADA.

OmuRusia edina laje Gagarin okua enda eti 12 la Apilili moshikuti sha kula (osputnik) sha umbilua keulu. Ina pumbua eetundi mbali di jadi eshi a dingonoka edu alishe nokua alukila pedu e nomuenjo, ina hangika koshiponga nande. Okua enda pombada moule ueemajila 110.

OSHIHAKULILO SHOSHIHAUTO.

Ongerki oñgualutheri jomouni-ngininombuañu ua Tanganyika oja peua omaano: oshihakulilo tashi ende keembinga neembinga moshilongo. Oja udanekelua jo okudikilua oskola moshilongo osho. Omaano aa okua dja ku Duitsland.

OINAMUENJO IKUMUIFA.

Kofaalama Wiesental ja Mnr. J. Nienaber (Grootfontein distrik) ongoobe jaje ja dala okatana ke nomakondo atatu e li luopongolo jokuulu kuokomesho kolumosho. Omakondole-la ngashi naanaa oo e li kondungu jokuulu oko.

Natango pofaalama tuu ojo, mu Januari joneudo, oshikombo shimue sha dala epasha likumuifa. Ounimue-na vavali, kamue oke li naua; ndele kamue ove li kumue vavali. Oñulo imue, omutue umue ndele ou nomatui ane. Omaulu oku li atano naatatu, hano a jeleka oinamuenjo ivali, nomishila mbali. Ovo ova kala nomuenjo efimbo lihupi no va fja. Omuene uofaalama, Mnr. Nienaber okue va tula momeva e neñgono va ha ole, opo ovatali vahapu ve uja nova kufa nomafano avo olupe olo lukumuifa.

OVAFITA VAPE VA JAPULUA MU ENGLAND.

Mongerki jomuEngland (Angli-kaanse kerk) omua japulua ovafita vahapu ouduali (1960). Ovo vahapu ve dule ovafita aveshe va japulua odula keshe kokudja kodula 1914. Ovaenglisha ova hafa osheshi mongerki javo omua li mu noluhepo luovafita.

OVAFINDJALA VOMUKONGO OTAVA KUAFUA.

Ngashi tua hepaulula moMukuetu, oku nondjala ku Kongo. Eedila tadi fikifa natango omakuafu, ovañu va ha fja sheke kondjala. Msondaha ja huuninua ja Januari eongalo keshe lomusoomi jo ola umba ongalo jokukuafa ovakongo ovo tava fi ondjala. Ongalo ojo oja eta oiponda 10.000. Oiponda 6.000 ja tuminua ko nokuli. Oku na ediladilo okulanda omi noufila uomashini noimaliva ojo tai hupu ko, oiponda 4.000.

OVAKONGO ITAVA UDAFANA.

Ovapangeli vokeembinga neembinga da Kongo ova li va ongala ko Tananarive koMadagaskar, na vali va ongala koKongo jovene. Ndelene inava udafana naua natango. Omukulufu ua Katanga Tshombe ove mu kuata nokuli, nomushikuli uaje ote lilongekida oku ka kondjifa ovakuao. Moshilongo omu noluhepo linene.

OVAMBOLAND JA PEUA EPU- NGU.

Neudo moUambo mua etua eeshako depungu 62,300. Ouduali okua etua eeshako 89,155.

AALESHI TAA NYOLA

Sr. Sh. Malakia, Otjiwarongo, ta pandula ayehe mboka haa dimbulukwa aamati mboka haa longo kUushimba mehalakano, ihe taye ya nyolele noku ya tseyithila shoka tashi ningwa mOwambo. Unene ta pandula aagalikaneni yawo naasitagongalo naevangeliste mboka taye ya sil' oshimpwiyu omolwoomwenyo dhawo. Ayehe taa kundwa noohapu dhi li mu Heb. 6:9-12.

Oskar Haukelo, Windhoek, ote tu kundu ngeyi: Omukwetu omuholike mu Jesus Kristus, tu kondje shili manga tu li kevi ndi, opo tu ka mone oshishani sha aluhe kashi yonuka po.

Joel Sh. Samuel, Oranjemund, ota popitha aakriste ayehe ta ti: Aakriste aakwetu, ngashingeyi twa ningi aankundi yokomwenyo okukonga Omuwa momagalikano. Oyendji twa kanitha nokuli oomwenyo dhetu ihe Omuwa ota ti: "Ongoka ti idhimbike ndje paantu, nangame wo otandi mu idhimbike pu Tate megulu." Onkee ano omukwetu, tema onyeka yoye esiku kehe nthimbo kehe, opo u ka teye oshindji.

T.S. Kudulu, Oranjemund, ote tu kundu ngaha: Otetetete konga oshilongo sha Kalunga noujuki uasho, opo aische to i uedelua ko omaano.

Festus Niitembu, Walvisbaai, ota pandula ngeyi: Otandi hambelele Tate Kalunga, sho iha dhimbwa aashitwa ye. Muka mu Walvisbaai omwa tungwa ongerki ompe molukanda, popepi nokomboni yaawambo. Oya yapulilwa oshilonga shayo esiku eti 19. 2. 61. Ngashingeyi shaa ngoka ota vulu okuthika ko, opo a mone ngeyi iipalutha yokomwenyo.

E. Konias Haindongo, Helmeringhausen, S.W.A. te tu kundifa nEendjovo da Kalunga di li mepist. Kaaheberi. 3:7-18neimbilo 510.

Justus S. Amuwene, Outjo, ta kumagidha aantu ayehe ye nokudhiginina okuya mongerki nomiigongi moka oohapu dha Kalunga tadhi uuvithwa.

Opasa mOmaruru.

Otse aawambo yomOmaruru otwa gongala mOngerki yetu potundi onti 3 okuninga oshituthi sha pasa. Twa tamekitha nelongelokalunga, notwa piti mo otundi onti 4. Esiku ndyoka otwa yi komagumbo gatatu gaatiligane oku ya imbila. Oya li ya nyanyukwa shili oku ga pulakena. Oye etu pe wo omagano, ngoka twe ga nyanyukilwa wo.

Esiku lyeyumuko otwa ka talela po aavu koshipangelo shaaludhe, aatakumi, aaherero, naawambo oku ya faalela oondjimbo. Oya li ye dhi pulakene nenyanyu enene. Oya tumbula wo ya ti: "Otse otwa aluka shili koomwenyo dhetu, nando omalutu getu taga alukwa. Otatu mu pandula shili unene sho mwe tu talele po noondjimbo oombwanawa. Oondjimbo dheni odha thika megulu koshipala sha Kalunga. Tsikileni natango oshilonga sheni nuupenda."

S. P. Heita,
Omaruru.



EKUNDO LEHAFO la dja ku Wenduka notali ti: Omuevangeliste uetu Paulus Isak a pula pehulilo lomudo ua dja ko edimino a shune kOuambo a ka hombole. Manga e li pokuja, okua indila eongalo li mu ilikanene. Eongalo la dimina nondaka inene: Eua, ohatu ku ilikanene. Eongalo ole mu umbila ongalo nokuli (£ 6. 18. --. nofeua). Omukulufutumuua ua N. G. Kerk Potgieter mongalo a umba mo ohamushuhu. Osho ngaha tua lekela Paulus uetu a ka hombole. Efiku keshe hatu keuka ngenge ta di ko na meme, opo tu kale nehafo li dule lefiku tue mu lekela.

Pehovelo la Febuluali tate Paulus e uja pamue na meme Emma Isak. Otua li tua tuminua ekundo liua la dja keongalo lEtiljasa no tatu ti: ndangi, ekundo leni lehafo la fika naua. Ovakuetu ava va hovela vali oshilonga shavo ku Wenduka. Kalunga a uda omailikano etu, nde a uanifa o-maudaneko aje. Otatu va halele epuniko la Tate Kalunga meumbo lavo nomoilonga javo.

Malakia Hauuanga.

Simon Hedibi, Windhoek, ote tu kundu ngeyi: Efiku limue omukuetu umue okua pula nge kutja ouhamba ua Jesus otu hulu po naini. Ame onda ti: tala, omukuetu, ouhamba ua Jesus itau hulu po, otatu kala po alushelushe. Ovakuetu, imbileni Kalunga, imbileni Ohamba jetu.

Ps. 47: 7 na Luk. 1: 32-33.

L. Namutenya Kornelius, Otavi, Ote tu kundile po noohapu ndhika Joh. 4:7-10.

Titus Joel, Oranjemund, ota pandula nokuhambelela Kalunga sho a longitha ohole onene koholomende, osho e tu sile oshimpwiyu tu mone iipalutha.

OSHIPONGA SHOMAKAYA.

Ngaashi twa li twa tseyithilwa moshifo sha zi ko nkene omakaya taga yono po omuntu, notaga eta omikithi omidhigu nokuli.

Omakaya gogone ihaga tungu sha molutu, nokage na oshilonga sha sha molutu. Ihe aantu oye na wo o-matompelo kutya, ngame ohandi hili omolu ontumba, ngame omolu omukolo, nosho tuu.

Oshilonga shoka omakaya ge shi na shila uuzigo mboka tau tiwa "nikotien". Uuzigo mbuka owo ou na oonkondo ndhoka itadhi pumbiwa molutu lwomuntu. Olwithi ngele lwa yi komapunga, nena uuzigo mboka "nikotien" otatu yi mombinzi, nohau lemaneke oonerive. Unene uuluyi hau kwatwa wo mbala kuuzigo mboka u li molwithi lwomakaya. Nomuntu ota ningi omugoya, omakoto ageke ta dhiladhila shaa mpoka e li.

Aakwetu, olwithi lwomakaya kalu na sha shokupalutha molutu. Otalu imbi owala omuntu kaa koke. Omolwashi olwo oshiponga kuunona mboka tau koko natango.

Ngaashi epangwe, oli na olwithi lu nuuzigo u vule mboka u li momakaya. Nomolwashi wo lyi indikwa koveta kali hilwe. Nando yamwe haa li hilile mumwe nomakaya pamukalo guufuthi.

Omukwetu, ngele ino tameka natango okuhila, kambadhala shili waa pitike okuhila omakaya. Ngele oho hili shito, kambadhala okuteya omukalo ngoka omwiinayi. Niimaliwa yomaka yi landa iikulya.

Otandi mu halele eihalelo ndi ewanawa. Ono E. Angula.

ONDA KANITHA.

Ongobe jomedi ofidi, jeembinga da tala koshipala, ja tetua kanini kokutui kumue. Oja kana eti 21 Januarie 1961.

S. Petrus Hamunjela
Enoleu, Ongenga.

Uusino uyali, okasinona na yina. Onzinzi ontsimine komagulu yepunda enene, yi na ukonda wa fa wongolo.

Petrus Ilonga,
Etilyasa.

OLYE A KANITHA.

Oongombe mbali oondumetana, d a gwana ketemba, olwaala, nomakutsi nkene ga tewa, lu etelela kungame. Tseyi wo ethimbo lyekano lyadho. Shika onde shi ningi omolu aafuthi. Omudhiginini gwadho oye,

Isak A. Shaduka,
Onamukulo, Oshigambo.

FINSE SENDING DRUKKERY
OVAMBOLAND
ONIIPA.