

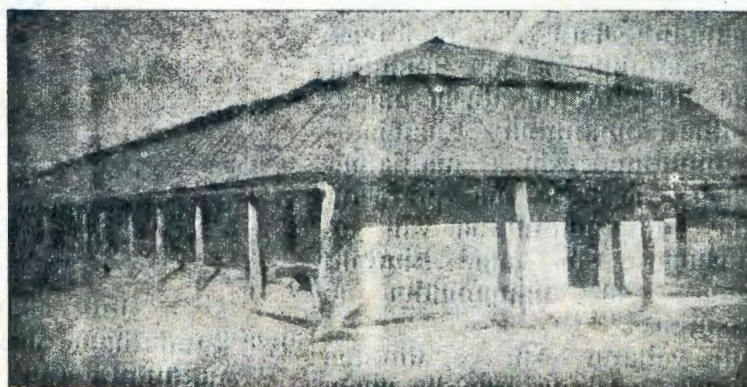
OMUKWETU



No 4.

APILILI

1961



Oshinyanyangidho shokOniipa.

OSHINYANYANGIDHO SHA LONGO *1901 - 1961*

OKAMBUTO KA NINGI OMUTI.

“Ino dhina omatameko omashona.” Osho Ombimbeli tayi tu kumagidha.

Pwa piti ngashingeyi omimvo 60 okambuto koshinyanyangidho sho ka kunwa mOwambo kEhanganotumo lyaasuumi lya landele aakriste aawambo okanyanyangidho koku ya nyanyangidhila iifo yokulesha, opo aakriste yi ilonge miifo oshindji. Pethimbo ndiyaka aakriste aawambo ya li inaa gwana natango egongalo limwe pamauuthompango, oshoka aakriste yomOwambo ayihe ya adhika inaa adha natango omathele gatatu, molwa sho aatumwa aasuumi ya adhika opo ya longo mOwambo omimvo 30 adhi-

ke. Ihe nando aakriste ya li po aashona ngaaka Ehanganotumo lya Suomi inali suunye oku ya landela okashina koshinyanyangidho, oshoka ya tala oluhepo lwaakriste aawambo naahongi yawo. Kapwa li pu na omambo goshiwambo nokapwa li nando iifo ya sha yokulesha, oluhepo lwowala.

Omumvo 1901 aahongi mboka ya adhika mOwambo oya li ya nyanyukwa shili Ehanganotumo lya Suomi sho lye ya tumine okanyanyangidho okashona kokunyanyangidha iifo yimwe yokulesha kaakriste.

Omuhongi Albin Savola guokOniipa okwa tameke ihe omumvo ngoka 1901, pamwe naakwathi ye okunyanyangidhila aakriste okafo okashona melaka lyoshiwambo.

Okafo hoka kotango komOwambo No:1 na No:2, otau monika mefano mOmukwetu tuu nguka. Nongele to

tala nawa oondanda domuufu mboka u li mefano oto vulu naanaa okulesha oshiwambo sha nyolwa kaatumwa mbeyaka ya li po konima yomimvo 60.

Okafo heyaka oka li haka topolwa aakriste mOsondaha, opo mesiku ndyoka lyOsondaha aakriste ya uuhale taa lesa no taa leshelathana omauvitho goohapu dha Kalunga ge li mokafo nomafatululo goohapu dha Kalunga nogelongo lyuukriste nomahokololo omawanawa taga tungu oomwenyo dhawo; esiku lyOsondaha opo li yapulwe mokuleshelathana kwa tya ngaaka. Onke okafo kawo ka li ka lukwa nokuli “OSONDAHA.” Koke ne oka li po okashuushu manga, (ngashi u ka wete mefano ndyoka), noka li ke nomapandja gane ageke omashona, ihe oka li ka hokiwa shili kaakriste oyendji, noka humitha komeho aatapu tsikilwa mep. 3.



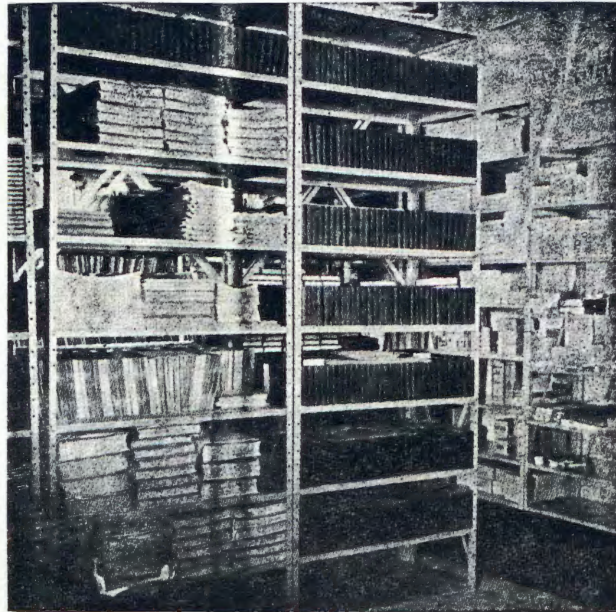
Apilili 1961

OSHILONGA SHOSHINJANJANGIDO.

Neudo otu noshivilo shoshifo shoMukwetu noshoshinjanjangido sho-moNaipa, osheshi pa pita eedula 60 oshilonga eshi sha hovelua. Oifo ihapu oja tandavela moVambo nokoKavango nomambo oo a leshua kovañu e he shi okuvalua nande. Eendjovo da Kalunga di nomuenjo neendunge ovañu vahapu ove di peua ngaha. Oshinjanjangido shetu oshe tu longekidila jo omaimbilo oo taa longifua alushe nde taa pumbua alushe mape, ngashi ouduali omaimbilo Ehangano omajovi omulongo eshi a njanjangidua ndelene aeshe a pua po filu. Neudo taa njanjangidululua vali, Omuene nenge e shi hala. Eimbilo lovaKavango ola njanjangidua jo paife moNaipa.

Ovañu vahapu eshi ve lihonga okulesha, nde eefikola eshi da ehena komesho, omambo a pumbua mahapu. Oñge oshinjanjangido osha pumbua jo eeñele da uana nomashina mape ndelene unene osha pumbua ovajakuli ovo va shiiva oshilonga shavo. Ohatu diladila nepandulo linene ovo va diinina oshilonga shavo nokuliehenifa komesho meendunge no mokuendelela moilonga javo. Ohatu diladila nepandulo linene ovakuateli-komesho voshinjanjangido nookuume koshilonga shetumo vokoSoomi, ovo va jandja luhapu omashina neempila oshali.

Ndelene efimbo eli loshivilo natu taleni komesho. Ehovelo alike ola ningua manga. Aveshe ndelene unene ovalongua vomeefikola otava pumbua komesho omambo mahapu oshiKuanjama nooshiNdonga nooshiKuangali. Omambo mahapu e li po taa longekidua paife kovanongeki. Ehovelo liua otali udaneke etuikilo liua komesho jo. Ngashi fijo paife oshilonga otashi ka monifa jo omaudju asho. Ndelene omaudju e li po tu findane keeñgono da Kalunga ou te tu pameke eshi tu li meke laje tu longifue kuje. Oshinjanjangido osho oshijakulifo ile oshilongifo ashike. Oshi noshilonga Kalunga nenge te peua alushe epangelo nefimano.



Mostora yomambo.

EKUNDATHANO LYAAKULUNTU.

Joh. 11:47-57

Oya kundathana shike?

Aakuluntu tuu mboka Kalunga e ya uthile Moses e ya wilike oshigwana she, omusita omukuluntu e ya manga.

Aasaseri aakuluntu naa kale aalunde, ngashika tse oya punduka mombepo noya kanitha ewiliko lyOmbepo, noya yugu Omuwa esimano lya ningi lyawo. Omuwa kwa tumu aaprofeti oku ya ulukila omapuko gawo, ihe ye ya tondo noye ya dhipaga. Jesus te ya ulukile neyele lyaa-nashitsambe, oyo noya yamukula noya nyengwa okuitedhulula.

Oshilonga shOmuwa Jesus inashi kwatathana nuuyuni auhe. Onke ano naa mboka ya kondjele euvathano lyuuyuni ya tsika. Iilonga iiwanawa yeuvathano oyo mbika yomu Kalunga, onke iilonga ayihe iiwinayi nayi dhipagwe. Oyo oya kundathana Omuwa ngo gwokombandambanda ye mu dhipage, opo esimano lya ninge lye,

Ovañu otava pumbua jo okuehena komesho melongifo lomambo. OvaVambo novaKavango nande ve dule nga oiwana ihapu jomuAfrika mokushiva okulesha, ope na vahapu kave shi shi natango. Nde mu ovo ve shi shi, omu na ovo itava lesa omambo maua oo tae va pe eendunge. Oupuna ou tu u na natu u longifeni tu mone elao.

ihe li ninge lyawo. Sigo onena Jesus ota longo iilongankondo, ihe omuto-ndi ta longitha aantu ye oku tonda Jesus noshilonga she, nokwa hala oku mu dhipaga.

Omuleshi omukwetu, tala nawa, ongundu yaasaseri, noyaakuluntu opo yi li moongongahangano dhongerki tadhi kundathana dhi dhipage Jesus. Ihe oonkundathana adhihe odhowalawala tuu. Otse nangoye otatu gama ku dhini? Okundhika dhuuyuni nenge okundhika dhomuyengeli tadhi popi omwaalelwa komushigakano, oKristus? Sakeus Iihuhwa.



Omuhogololi moshilonga she.



OMUKWETU

Apilili 1961

OSHILONGA SHOSHINJANJANGIDO.

Neudo otu noshivilo shoshifo shoMukwetu noshoshinjanjangido sho-moNaipa, osheshi pa pita eedula 60 oshilonga eshi sha hovelua. Oifo ihapu oja tandavela moVambo nokoKavango nomambo oo a leshua kovañu e he shi okuvalua nande. Eendjovo da Kalunga di nomuenjo neendunge ovañu vahapu ove di peua ngaha. Oshinjanjangido shetu oshe tu longekidila jo omaimbilo oo taa longifua alushe nde taa pumbiua alushe mape, ngashi ouduali omaimbilo Ehangano omajovi omulongo eshi a njanjangidua ndelene aeshe a pua po filu. Neudo taa njanjangidululua vali, Omuene ngenge e shi hala. Eimbilo lovaKavango ola njanjangidua jo paife moNaipa.

Ovañu vahapu eshi ve lihonga okulesha, nde eefikola eshi da ehena komesho, omambo a pumbiua mahapu. Oñge oshinjanjangido osha pumbua jo eeñele da uana nomashina mape ndelene unene osha pumbua ovajakuli ovo va shiiva oshilonga shavo. Ohatu diladila nepandulo linene ovo va diinina oshilonga shavo nokuliehenifa komesho meendunge no mokuendelela moilonga javo. Ohatu diladila nepandulo linene ovakuateli-komesho voshinjanjangido nookuume koshilonga shetumo vokoSoomi, ovo va jandja luhapu omashina neembapila oshali.

Ndelene efimbo eli loshivilo natu taleni komesho. Ehovelo alike ola ningua manga. Aveshe ndelene unene ovalongua vomeefikola otava pumbua komesho omambo mahapu oshiKuanjama nooshiNdonga nooshiKuanga li. Omambo mahapu e li po taa longekidua paife kovanongeki. Ehovelo liua otali udaneke etuikilo liua komesho jo. Ngashi fijo paife oshilonga otashi ka monifa jo omaudju asho. Ndelene omaudju e li po tu findane keeñgono da Kalunga ou te tu pameke eshi tu li meke laje tu longifue kuje. Oshinjanjangido osho oshijakulifo ile oshilongifo ashike. Oshi noshilonga Kalunga ngenge ta peua alushe epangelo nefimano.



Mostora yomambo.

EKUNDATHANO LYAAKULUNTU.

Joh. 11:47-57

Oya kundathana shike?

Aakuluntu tuu mboka Kalunga e ya uthile Moses e ya wilike oshigwana she, omusita omukuluntu e ya manga.

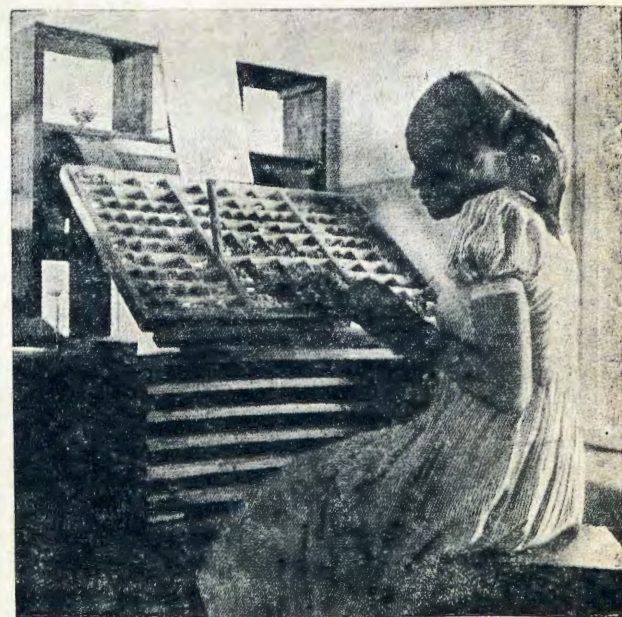
Aasaseri aakuluntu naa kale aalunde, ngashika tse oya punduka mombepo noya kanitha ewiliko lyOmbepo, noya yugu Omuwa esimano lya ningi lyawo. Omuwa kwa tumu aaprofeti oku ya ulukila omapuko gawo, ihe ye ya tondo noye ya dhipaga. Jesus te ya ulukile neyele lyaanashitsambe, oyo noya yamukula noya nyengwa okuitedhulula.

Oshilonga shOmuwa Jesus inashi kwatathana nuuyuni auhe. Onke ano naa mboka ya kondjele euvathano lyuuyuni ya tsika. Iilonga iiwanawa yeuvathano oyo mbika yomu Kalunga, onke iilonga ayihe iiwinayi nayi dhipagwe. Oyo oya kundathana Omuwa ngo gwokombandambanda ye mu dhipage, opo esimano lya ninge lye,

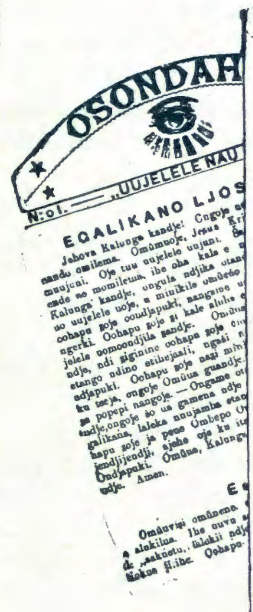
Ovañu otava pumbua jo okuehena komesho melongifo lomambo. OvaVambo novaKavango nande ve dule nga oiwana ihapu jomuAfrika mokushiva okulesha, ope na vahapu kave shi shi natango. Nde mu ovo ve shi shi, omu na ovo itava lesa omambo maua oo tae va pe eendunge. Oupuna ou tu u na natu u longifeni tu mone elao.

ihe li ninge lyawo. Sigo onena Jesus ota longo iilongankondo, ihe omuto-ndi ta longitha aantu ye oku tonda Jesus noshilonga she, nokwa hala oku mu dhipaga.

Omuleshi omukwetu, tala nawa, ongundu yaasaseri, noyaakuluntu opo yi li moongongahangano dhongerki tadhi kundathana dhi dhipage Jesus. Ihe oonkundathana adhihe odhowalawala tuu. Otse nangoye otatu gama ku dhini? Okundhika dhuuyuni nenge okundhika dhomuyengeli tadhi popi omwaaelwa komushigakano, oKristus? Sakeus Iihuhwa.



Omuhogololi moshilonga she.



ETANGO LJEVULULUKO.
2.
(Egwezo.)
Kalunga nokwe li JAPULA esiku ndjoka etibejasi, uljevululuko. Ejapulo esike? nokujapula okuwike, au taku ti ngini? Ejapulo limue nejoloto, nokujapula limue nokujoloto. Osinima sa japulus, oja joololua, to inasi joololua oshinaji, oja joololua oshinana. Osinima nge sa japulus, oja joololua sa, si ikalela, sa simana, mokusimana, ngele sa tilika, nenge sa hokua. Aantu nkene ja kala muujuni apaganani, saajuda, makriste oja kala je nitaina, nomikalo, nitila ojindji ijapuki; no ngasi Aandonga uo je nitinima jao ijapuki ojindji. Ihe nena kandi nokujopja itinima ojindji ijapuki, auc, ondi nokujopja esiku neage etango ejapuki, Kalunga kue li japula, kue li tu japulile.
Auo esiku ndika tatu popi so lja japulus, olja japulus ku Kalunga, 'IJO INAALI JAPULUA KAANTU; auo oljo ejapuki na sito nale, KALUNGA kue li japula. Auo uena oohapu ngoka zopango osititatu Kalunga so ta lombuele, e ta ti: gim bulukua etango ljesabati, ag'u li japula, otangi ti ngini, oondunge zazo! Otae otu noku li japula ngini? Tu li ninge ikike? Otae jene katu na toka tatu li ningi; katu nuujapuki mutse jene oku li japula. Ihe, otae otu nokujapulila esiku ndika ejapuki, Esiku ndjoka, ongame odl nokujapula OKANA kandi, NOMAKUTI gandja, NOMENO, gandje, nitika sa jantije. KOMPAKI NOMURNO gandiya.

Onomola yotango
yoshitetekeli shoshifo
"Omukwetu".

Moohapu dhevangeli lyonena Jesus ota galikanene aatumwa omboka ye noshilonga shevangeli muuyuni mbuka. Ehanganathano lya Jesus na He olya ningi wo lyaalongwa na He. Onkene tuu oku shi shi otaa ka mona uudhigu moshilonga shika, okwa tameke oku ya gandja ku He, e ya joolola muuyuni.

Ongoye omutumwa gwOmuwa Jesus, ou na elago enene. Ito pumbwa okulimbililwa nando mokuhokolola Jesus. U kale momathiniko ncenge muudhigu sigo omeso nokuli, ino tila sha. Adhimitha ashike Jesus, oshoka omagalikaneno ga Jesus otage ku humbata, ha peha limwe, awe, omuuyuni mbuka auhe. Jesus ota galikanene aatumwa ye ya gamenwe kuuinayi.

"Etango itali ku tsu omutenya nomuedhi itagu ku tsu uusiku. Omuwa ota gamene okupita kwoye nokuyamo kwoye, onena naaluheluhe."

H. Sakeus.

OMUWA KEE MO, OKWA YUMUKA.

Joh. 20:11-18.

Omahunganeko gomooramata oga gwanithwa shili naa naa ngashi tatu lesa. Mat. 18:32,33.

Omuwa Jesus manga a kala naalongwa ye nosho wo aakiintu mboka ye mu landula, okwe ya lombwele ashihe shoka tashi ka ningwa, shaa tuu taa dhiginine omanyolo omayapuki. Ihe nando ongeyi, una Jesus sho a zi po, oyo inaa itaala, ihe otaa ukile ngaa kombila taa kongo, ihe Omuwa kee mo, okwa yumuka. Metumwala ndika lyezumuko tatu pumbwa eitaalovuliko oyo tu dhimbulule neitaalo lyetu yene, Omuwa okwa yumuka shili. Omuwa okwe tu ihololele oye e nomwenyo, unene sho te ya putse wo, aawambo, no te tu popitha a yumuka. Ewi ndika lyezumuko otali uvika-miilongo, miigwana nomomalaka agehe: Omuwa okwa yumuka e li po Omusindani. Oitaali ya Jesus ohaa paluthwa no haa kolekwa aluhe kohapu ndji: "Inda kaamwameme." Omuwa kee shi ngoka ta londo, ye e ta kala ko a mwena, awe, ihe ote ya mbala kegongalo lye, Iil. 1:11.

Ohapu ndji yeyumuko oyi nomwenyo yo no tayi gandja oonkondo dhokuhokolola eso neyumuko lya Jesus. Ohapu ndji otayi meneke omimeno dhe. Odho no tadhimi imike iyimati.

Omuholololi ngoye gweyumuko, ongoye onzapo yeyumuko lyOmuwa, Omuwa ta tegelele u adhe mpeyaka na mpeyaka manga u na ethimbo muuyuni. Uumbanda nehalutho kau po we, shila omumboka taa ti: Katu shiwo ngele okwa yumuka tuu shili, ihe konzapo yOmuwa, ongele momaudhigu nenge moothina oye shi shi, Omuwa okwa yumuka noku na omwenyo no ta pangele, 1Kor. 15:25.

Johannes Gueendama.

MEGALIKANENO LYA JESUS.

Joh. 17:6-10.

Ayehe mboka ye mu taamba okwe ya pe oonkondo ya ninge aana ya Kalunga. Oyo ye li po aana yomagalikaneno, taa galikanenwa ku Jesus.

Oshifo shOmukwetu tashi longo oshilonga oshinene mOwambo nomUushimba; niifo omayuvigaheyali (7000) tayi nyanyangidhwa momwedhi kehe. Aamati mboka ye li mehalakano kiilongo niilongo yokUushimba, ohaa dhiginine okuilandela "Omukwetu," shoka tashi ya manga nawa nomagongalo gaandjawa gokOwambo. Oshifo shika ngashingeyi oshi nomapandja omulongo nagaali (12) omanene nokuli, nosha ningi eyakulo ewanawa kaawambo ayehe.

Oshifo oshikwawo tashi nyanyangidhwa wo, luhamano momuvo kehe, osho "Ehanganu" notashi kwatha unene mboka ye li moshilonga sha Kalunga momayakulo giili nogiili.

Ihathu vulu okudhimbwa okambo okaholike kutseni atuheni, oko "Ondjalulamasiku." Uumbo nando tau nyanyangidhwa owindji (ngashi numvo 15000) otau pu po aluhe manga oye ndji ye u hala, inaa pewa nande.

Oumambo agehe ngashi iifo mbika twe yi popi, tayi lalakanene oshinima shimwe ashike: okutaandelitha oohapu dha Kalunga nokukwatha oomboka ya tokola okulandula Omukulili, oku ya dhiginina eitaalo lyawo noku li koleka. Nayihe tayi zi koonkondo dha Kalunga dhi li moohapu dhe.

nyanyangidho kashi shi kuyelekwa, oshoka sha ningi oshinene kevi alihe lyomOwambo. Sho pwa piti omimvo konyala 30, oshifo shOmukwetu sha holoka.

Sho pwa pita ethimbo, opwa holoka uumbo wokufatulula Ombimbeli ngashi tatu vulu okutumbula "Omafatululo gepistoli lyokaagalati." Momimvo ndhika kwa holoka embo enene nokuli, "Efatululo lyevangeli pa Markus."

Oseminari sho ya tameke okulonga mOniipa, uumbo uupe wa holoka okuyakula oseminari ndjoka, ngashi "Ehisteri lyongerki," okambo kelongo lyolyene nolyepatudho.

Oumuhongi N. Wäänänen omunyoli omudhiginini pethimbo ndyoka. Uumbo wokuhunga aavu wa ningwa kaapangi yokOnandjokwe.

Uumbo uushona auke wa nyanyangidhwa tango mOniipa, omambo omanene moSoomi. Ihe iita sho ye ya 1939 oya teta ekwatathano pokati kOwambo noSoomi, nena oshinyanyangidho sha li shi nokutaamba oshilonga ashihe. Nosho ya ningi wo nosha humu nawa komeho, unene momimvo ndhika dha hugunina, shoka sha pewa aahongi mboka ya longwa nawa iinima mbika mu Soomi.

Oshinima shenyanyu kuaayehe shokwa monika aawambo yamwe ye nomagano okunyola omambo, ngashi omumvo 1955 okwa holoka okambo "Ongundumbimbeli," ka nyolwa komusitagongalo Timoteus Andreas nomomumvo gwa landula "Moshilongo shetu" komulongi Leonard Michael nosho wo "Omahodhi gaavali" komulongi Hans D. Namuhuya.

OKAADNJETU



Aasi m'Oniimuandi.

Immanuel Henok	a si	4	6	1960
Kusta Stefanus		(kUushimba)		
		23	11	59
Vilhelmina Enkono		10	7	1960
Aron Iiyambo		10	7	1960
Tomas Paulus Shipena		23	8	1960
Helena Shipanga		3	9	1960
Rebekka Iipinga		25	10	1960
Martin Emvula		4	11	1960
Justina Iiyambo		7	11	1960
Josef Emiliha		11	11	1960
Vilhelmina Emvula		26	11	1960
Vilhelmina Uguanga		12	12	1960
Saara Filemon		21	12	1960

Aasi k'Omaruru 1960.

Thomas Nangolo Amutenya Oniipa	5.	1.	60
Josef Ananias	Onguediva	12.	1.
Johannes Shilongo	Uukwambi	13.	11.
Natanael Amakali	Uukwambi	16.	12.

"Tu longa shili okuyalula omasiku getu opo tu mone omwenyo gu noondunge,, Eps. 90:12.

TU KALANI METONATO NOMO-KUTEGELELA OMUWA.

Omuwa Kalunga okwa longo oshikumitha, sho omukulukadhi Marta Negoli, gwomusitagongalo Daniel Mutumbulua kwa mana oondjenda dhe mu Swakopmund 29. 11. 1960. Oye okwa mana oondjenda ombadhilila esiku tuu ndyoka una a li ti ilongekidha a shune kegumbo k'Otavi. Oye nokwa li kee na nando oombudhi dha sha. Nangame nguka nda popi naye potundi onti 9 nokwa li nokanona ke. Ihe pethimbo ndyoka nenge konima yokathimbo Kalunga e mu fala kekululuko lye.

Meme Marta Negoli okwa li omuyakulilela, okwa yakula wo peha lyomulumentu gwe moshinyanga nomokupukulula aantu. Nokwa li onyeka ya minikile.

Ihe omunona gumwe okwa landula yina esiku 24. 2. 61.

Kalunga na kwathe nokuhepulu-tha omusamane Daniel noothigwa dhe. Oye omunankondo oku tu humbata.

Otto Namene.

MAI.

1. M. Ef.5:8-14. Jona 1:1-16.
2. D. Joh.6:66-69. Jona 2:1-11.
3. W. Kol.3:16-24. Jona 3:1-10.
4. Do. Mat.21:12-17. Jona 4:1-11.
5. V. 1Kor.2:6-10. Hab.1:1-4.
6. Sa. 1Sam.16:14-23. Hab.1:5-14.
7. S. **Os. 5 ya landula Eyumuko. Osondaha yegalikano. Heb.7:19-28. Joh.17:18-23. 2Mos.17:8-15.**
8. M. Mark.1:35-39. Hab.3:1-19
9. D. Jak.5:13-18. Sef.1:1-7,14-18..
10. W. Joh.17:11-26. Sef.3:8-20.
11. Do. **EYELUKO LYOMUKULILI. Heb.10:12-18. Joh.17:24-26. Eps.110:1-4.**
12. V. Kol.3:1-4. Joel 1:1-15.
13. Sa. Luk.18:1-8. Joel 2:1-11.
14. S. **Esiku 2 LYEGALIKANO. Hes.18:4. Esra 8:22. Omayelet.6:23. 1Aak.19:8-14.**
15. M. Joh.14:15-21. Joel 2:18-27.
16. D. Joh.15:17-21. Joel 3:1-5.
17. W. 1Kor.2:12-16. Eps.42.
18. Do. Joh.7:37-39. Eps.43.
19. V. Heb.11:32-40. Iil.1:1-14.
20. S. Jes.41:17-20. Iil.1:15-26.
21. S. **PENTEKOSTE. ESIKU LYOSHIPE. Ef.2:17-22. Joh.15:10-17. Hes.36:25-27.**
22. M. Joh.3:16-21. Iil.2:14-24.
23. D. Eps.51:3-14,17-19. Iil.2:25-36.
24. W. 4Mos.11:16,17,24-29. Iil.2:37-41.
25. Do. Ef.2:17-22. Iil.2:42-47.
26. V. Ef.4:11-16. Iil.3:1-10.
27. Sa. Joh.20:19-23. Iil.3:11-18.
28. S. **ESIKU LYUUKWATATU UUYAPUKI. 1Joh.3:1-9. Joh.15:1-9. 4Mos.6:22-27.**
29. M. 5Mos.6:4-13. Iil.4:1-12.
30. D. 1Aak.8:6-14,22,23,26-30. Iil.4:13-22.
31. V. Ef.4:1-6. Iil.4:23-31.

OU LI NA NALE?

Omumvo gwa yi, moshinyanya-ngidho m'Oniipa mwa nyanyangidhwa embo ewanawa shili. Ngele wa hala u kuminwe Luther, lesa embo ndi:

"Ependafule lyoku Wittenberg"

Embo ndyoka otali kumitha unene. Shaa tuu wa tameke oku li lesa, nena ino hala we u li tule po. Eholololo ndyoka otali ku kwata.

Shaa tuu wa tameke: "Ondjodhi ya tsa," uuna u leshela ontopolwa ndjoka tayi hokolola Luther e li mu "Ndithinduudhe" ya Jena, ngiika ngweye ku na we mayeye.

Embo ewanawa shili noonkondo. Li landa ano opo u tseye okukala kwa Luther.

KALII PO NAUA!

Ovakriste ovakuetu, olufo luetu tu ka fude koSoomi ola fikana. Otua hala oku mu pandula amushe omoluohole jeni jopakriste mue i tu humbatifa noku tu jakulifa naua pae-ñgedi dilili no dilili no meedula edi ñano tue di peua vali koñgenda ja Kalunga okukala medu leni omoshilongalanga shaje shinene. Ihatu dulu okudimbua nande ouua aushe mue u tu ningila.

Nande tua li tu nokutukauka vali, otua tukauka ashike palutu, ndelene m'Omue uetu nom'Ompo jaje Ijapuki otu li pamue. Jesus Kristus oje ombili jetu, okue tu manga kumue.

Otua hala oku mu lekelifa eendjovo edi dimue dom'Ombimbeli:

"Lihomatekeni oikondjifo aishe ja Kalunga, mu dule okufikamena omakonda aeshe omujelani".

"Ndelene kombada ja ei aishe diken ohole, ojo ekuamo leuaneneno olukumanga kumue, nombili ja Kristus nai pangele meemuenjo deni."

"Eendjovo da Kristus nadi kale di jadi munje, longafaneni, pukulufaneni neendunge adishe --."

"Ilikaneni alushe. -- Omepo inamu i dima po. -- Kalafaneni mu nombili."

"Taleni, pa ha kale ou ta alulile mukuao ouui, ahoue, mu kale alushe okulongelafana ouua noku u longela aveshe."

"Nangekeni noupuna ava tave mu taataa. Nangekeni noupuna, nje inamu finga. Nangekafaneni noupuna, osheshi osho tuu osho mue shi ifanenua, mu fjuulule enangeko noupuna."

"Ndelene mu shituke vape no fi-jo moñepo jomeemuenjo deni, nje mu dike omuñu mupe a shitua a fe Kalunga omoujuki nomoujapuki uashili."

"Kalunga na hambelelue, ou te tu pe efindano omolua Jesus Kristus-Omuene uetu."

"Efiloñgenda nombili nai kale pamue nanje."

Aino na Erkki Hynönen.

Mboka mu li k'Uushimba, li mbesteleni k'Ostora yomambo, Oniipa, Pk. Ondangua, S. W. A.

Endeleleni, otali pu po. Pula ano, embo ndi: "Ependafule lyoku Wittenberg." Li lesa e to kumwa. Ohali pula 2/3 (22 1/2c)

H. D. Namuhaja,



Dr. M. Juva



Mnr. A. Vallisaari

OMUWILIKIHAPU GWEHANGANOTUMO LYOSOOMI OTA TALELE PO OWAMBO NOKAVANGO.

Otatu tegelele omuyenda a simana, omuwilikihapu gwehanganotumo lyoSoomi, professor Mikko Juva e tu talele po. Ote ya pamwe naMusanga, omusitagongalo Aleksii Vallisaari. Tango pwa li pwa dhiladhilwa, e ye pamwe nomuwilikitumi Vuorela, ihe omusamane Vuorela sho a yi ngashingeyi kuIsrael no ku nokuthika natango ku India no ku Pakistan, ita wapa okuya we huka.

Professor Juva oku noomvula omilongo ne, ano omugundjuka natingo, ihe oye omundohotola guunongo nomundohotola guuteologi wo, okwa kala omimvo dhimwe nokuli omulongi gwehistori moskola yokombanda (university) yokoTurku. Okwa nyola omambo ogendji taga hokolola nawa ehistori lyoSoomi, unene ehistori lyongerki yoSoomi. Mewilikongundu lyeHanganotumo a kala okuza omumvo 1951 nokwa ningi omuwilikihapu omumvo 1955. Okwa li omutumwa gwongerki yoSoomi miigongi oyindji iinene. Omukulukadhi gwe oye omundohotola guupangi.

Omusitagongalo Aleksii Vallisaari okwa longo muusitagongalo sigo a ningi amushanga gweHanganotumo.

Aayenda yetu otaa thiki koVenduka eti 9 lya Mei notaa popitha aawambo mboka ye li ko. Otaa yi wo koMbaye nokoMonda. Okuza kuUshimba otaye ya tango koKavango, nena koWambo. Olweendo moWambo otalu tameke koNkongo eti 24 lya Mei, no taa tsikile eti 25 koMundaungilo, eti 26 keeNana, eti 27-28 keNgela, eti 29 koNgediva, eti 30 koNandjokwe, eti 31 koLukonda, n. sh. t. Osondaha, eti 4 lya Juni ye li koShigambo, nosondaha eti 11 lya Juni koKahao.

Aayenda yetu ayehe sho ye li po ookume naawiliki yoshilonga shetumo, oya yuulukwa okumona ongerki ndjoka ya holoka mpoka oshilonga shetumo sha longwa. Omuwilikihapu gwewilikongundu ote ya ngaka lwotanogotango oku tu talele po. Natu dhimbulukweni okugalikana, atuhe tu lalukwe nuuyamba kondjenda ndjika, nookuume ketumo ya tsuwe omukumo okutsikila eyakulo lyawo.

EKWATHO OKUTUNGITHA ONGERKI YOMU WALVISBAAI.

Aamati mboka haa longo mu Walvisbaai, oya tumine oshifo shOmukwetu ombapila yelandulathano li nomadhina 125 yamboka ya tula sha moshiketha shokukwatha etungo lyongerki ndjoka. Ihe omolwehala eshona mOmukwetu, twa nyengwa okutumbula omadhina gawo, onke ano tatu ti pafupi ekwatho lyawo alihe lya ningi £ 7. 10. 11.

Aatungi ya taamba nepandulo omaganogawo noku ya halela eyambeko lya Kalunga.

EJAPULO LONGERKA MUWALVISBAAI.

Mefiku eti 19. 2. -61 omo tua ninga oshivilo shongerka jetu ipe mu Walvisbaai. Efiku olo la li liua shili kufjeni atusheni.

Petameko manga inatu uja momongerka, poshivelo opa imbua eimbilo 152. Eshi tue uja meni, opa imbua vali 433. Otua kundua tete ku tate Leonard Auala neendjovo edi mEps. 84. Konima jeudifo eli tua popifua komuhongi Diehl neendjovo di li mu Ef. 2:19-20 nokomukulunu ueongalo laWalvisbaai ku Joh.10: na Bantoesakekommissaris.

Sho pua imbua 635, elongelokalunga la hula novañu va fuda po kanini, ndelene efimbo ola li lifupilela. Ovañu ova li vahapu shili. Omufitaongalo omuhherero te tu popifa nosho jo omuhongi uOkahandja. Omuwilikingerki L. Auala e tu leshele Mat.28: 19-20 nokue tu popifa neendjovo edi. Navalitua kundua komuhongi Marttunen (1. Mos.1:16) nokomuhongi a dja ku Tsumeb (Joh.6:19-20) nokomufitaongalo T. Nakanyala (Eps. 135:1-5). Konima jaishe omuhongi uetu Kuhles okua jandja omakundifo aeshe komuwilikingerki L. Auala, e a tuale kedu letu lovauambo. Omuhongi E Hynönen nomufitaongalo I. Ninda ve tu kunda jo. Oshivilo sha li shi jadi unene novahongi vamuve va dja ku Douishlanda nokoilongo ilili no ilili. Oshivilo shetu shiua sha hulifua neimbilo 340.

Natu kaleni alushe neilikano Omueene a nangeke noupuna ongerka jetu ipe.

Ndinoñolo Dias Ndilula.

Embo ELONGO LYUUKRISTE

moshindonga olya holoka notali pulala 20c.

OMAKUNDITHO.

Aasitagongalo, naevangeliste naanongeki yomooskola, naahungi yaavu, naakriste tuu amuhe miilongo yaawambo. Aamwatate naamwameme aaholike mu Kristus Jesus Omuwa nOmukulili gwetu.

Onda kala te nyenyetelwa komwenyo gwandje uuhethi wandje, ngame sho nda ningi esiku inaandi mu nyolela. Eeno, ondu uvite ohoni shili.

Okudhimbwa inandi mu dhimbwa, awe, onda kala noku mu dhimbulukwa noku mu yuulukwa noku mu galikanena. Nonena te kambadhala ihe oku mu nyolela ngeyi. --- Otse na meme Kuukende twa kala noshimpwiyu noluhodhi omolweni, sho twa kundana omaluteni nomanota ge mu etele uudhigu. Eeno, oondjala nomanota mu ga shi no shito, ihe ihaga iigililwa, awe, uudhigu shili. Tse nookuume ketumo, aaSoomi oyendji, twa kambadhala oku mu gongela ekwatho wo muudhigu weni. Nokugalikana twa kala noku mu galikanena Tate Kalunga ketu e mu dhimbulukwe ye e mu tumine oomvula oombwanawa. Eeno, uuwanawa auhe nomagano ga gwana ohaga zi kombanda oku He yuuyelele, oku Tate Kalunga ketu. Oye omunandunge nomunankondo shili, e shi shi shoka she tu oopalele shili, ye no ta vulu okuukitha iinima ayihe kuuwanawa oku mboka ye mu hole. Eeno, nomaluhepo nomaudhigu nomaluhodhi Tate ta vulu oku ga longitha ehalo lye. Nonando omatale agehe, nomilonga adhihe nomaluthithiya agehe nando ga pwine, omulonga gwa Kalunga, ogwesilohenda lye onkene gu udha, gu udhilila. Oye nokwe tu uvanekele ompito okuya komulonga ngoka gwepitho. Eeno, omulonga ngoka gwomeya omanamwenyo otagu fuluka mo moshipangelapundi sha Kalunga no shOnzigona, Ehol. 22: 1. Omulonga ngoka nogu li mo nomokati ketu nomeya ngoka omanamwenyo otagu tu fulukile moohapu dha Kalunga nomomasakramenti omayapuki. Tu kaleni, ooyakwetu, tu nuupenda nuuladhi okuteka mo, tse twaa sile enota lyokomwenyo, awe, ihe oomwenyo dhetu dhi ninge wo omaluthithiya

gokufulukila aantu aakwetu wo omeya ngoka omanamwenyo, Joh. 4: 13, 14.

Omukwetu, ngiika to pula ndje: omeya ngoka ogo oga shike, nenge ogo omashike? Tala, ogo esilohenda nohole ya Tate Kalunga ketu noyOmukulili gwetu Jesus Kristus. Omuwa mwene note tu ithana ta ti: "Ileni kungame amuhe mboka mwa loloka, ngame tandi mu pe evululuko," na "Ngoka a senota, ne ye kungame, ye na nwe." Aamwameme aaholike, elago enenenene ndika inaatu li dhineni, awe, tu kaleni noku li taamba esiku kehe nokwitedhulula nokwinekela omauvaneko gOmuwa nokwinekela ekulilo, sho twa kulilwa ku Jesus Kristus, Omusaseri Omukuluntu ngoka "a yi muuyapukilela --- onombinzi ye mwene --- nokwa gwanitha ekulilo lya aluhe." Omukwetu, pamwe to pula: olye nalye ya kulilwa? Tala u tale ngu leshe mEtestamenti Joh. 3:16 na 1. Joh. 2:2 na 2Kor. 5:14-21. Oohapu ndhoka. nadhi ninge ekunditho lyandje lyoku mu kundila po. Eeno, tu kaleni nokudhama nokwikwatelela shili kesilohenda nohole yOmuwa. Nenyanyu lyokunyanyukilwa mOmuwa olyo nali kale oonkondo dhetu mematuko ndika lyethigathanopo tu li mo nomekondjo lyetu lyokukondjitha ondeveli nuuyuni nonyama yetu yene. "Kondja, u adhe ethikilo lyoye." Nyanyukilweni oshipewa sheni oshinene shi li megulu. Onatango taambeni ongekunditho lyandje mepistoli lyokaakolosi 3:1-17. "Nomibili ya Kalunga yi vule uunongo auhe, nayi gamene oomwenyo dheni nomadhiladhilo geni mu Kristus Jesus Omuwa gwetu."

Omakunditho getu na meme Kuukende ogo ngaka ogoku mu kundila po noku mu halela omaganohenda agehe ga Tate Kalunga ketu nogOmukulili gwetu Jesus Kritisus. Ngame kuume keni Niikondo na meme Kuukende.

Inatu dhimbweni muuyuni mukahamo maandjetu, awe, Otse aakwiilongo noondjendi kevi ndika. Kaandjetu omegulu maandja Tate Kalunga ketu. Tu kaleni ano nokulalakanena ethikilo lyetu okelaago lya aluhe lya gwana lya gwanenena shili.

Niikondo.



OMILEMA DHOKU GOLGATA.

Ihe okotundi ontihamano kwa kala omilema moshilongo ashihe sigo okotundi ontimugoyi. Mat. 27: 45.

Ethimbo ndyoka omilema dha tameke kombanda yevi, pethimbo lyetu olyo otundi 12 yomutenya, ano pokati komutenyalela. Ano ethimbo tuu ndyoka omilema dhe ya nodha siikile Golgata. Oshilonga shomilema osho iihuna yowala, netango lya fa lya sohoni oku shi tala. Etango lya tala tuu iilonga oyindji muuyuni, ihe mpoka uuwinayi woheli, noondjo dhaantu dha londo sigo okegulu, noonte dhetango tadhi nyengwa oku dhi ulula esiku lya Golgata. Ihe ongoka e li po uuyelele uuyuni, oye awike e na oonkondo oku dhi dhima po mokusa.

Omukwetu, ootundi ndhoka 3 dhomilema sho dha kala kombanda yevi, odha gwana wo shili dhi tu dhimbuluthe omilema dho moshilongo shiyaka, moka mwaa na nando onte ya sha yuuyelele aluhe sigo aluhe.

Otse otwa gwana owala tu tye: "Omuwa, kwatha ndje okutonda omilema, niilonga ayihe mbyoka ya nika omilema, ngame ndi hole uuyelele. Minikila okukala kwandje akuhe, ngaye ndi ende muuyelele woye. Hupitha ndje momilema dhaaluhwe, ngu thikithe ndje dongo omeadhimo lyegulu."

B. J. Lasarus.

Jesus Kristus e ya omuhanganithi okuhanganitha iigwana niilongo Joh. Gweendama.

OSHIKOLOLO SHAAGUNDJUKA



OUDJUU NANDE U LI PO, KALUNGA OPO E LI.

Okua li ku na okakadona ka kuatua komukolo uepunga. Oudu eshi ue ka hepeka unene oka tualua moshihakulilo. Moshihakulilo oka ninga mo efimbo lile. Tete okakadona oka li ka hepa shili. Omolu oujehame ou inaka dula okukofa naua. Oufiku aushe ka kala nokukolola. Omolu oluhepo la tja ngaha okakadona ka tameke okukukutika omuenjo uako. "Omolua shike Kalunga a efa oudu ou u kuate nge? Omolua shike ndi nokuehama ngaha fimbo vakuetu ve li naua? Omolua shike omiti dihe na eefigono okukuafa nge? Fijo onaini ndi nokukala ngaha?" Osho ngaha ke lipula luhapu moujehame uako.

Okakadona ka kukuta shili nai. Ovahakuli ove ka limbililua moluashi inaka hala okupopja navo. Kape na nande sha tashi ka hafifa. Osho ka kala eehani dihapu.

Ndelene okuenje eshi kue uja, pa ningua sha. Popepi noshihakulilo opua li omiti diua okutala. Eedila dihapu oda tameka okutungila oiha-dila jado komiti odo. Mondjuuo jokakadona mua li ekende. Nekende olo ola li la jeululua alushe, shaashi ovanauudu tava pumbua alushe oñepo ja uana.

Okakadona fimbo ka li mombete jako oka tala nokupuilikina ehafo leedila. Omutenja aushe oda longa nokuhambelega. Efiku limue odila imue je uja mondjuuo jokakadona.

Ojo ja tala tete nokutula ndele eshi ja mona okakadona ka nangala nombili mombete jako, oja hafa, shaashi je uja mo, nde tai talatala keembinga adishe fijo ja mono aishe i li mo.

Efiku lotete oja kala mo okafimbo kahupi nde tai tuka mo tai i pondje.

Ndelene okakadona eshi ka li ka hokua odila, oka diladila okuninga sha, ngenge tai uja vali. Eshi ka lja oka hupifa okamboloto nde take ka tuvikile naua.

Efiku etivali eshi je uja mo. Okakadona ka kufa okamboloto nde taka kala meke lako. Odila oja tuka diva nde tai uile peke lokakadona nde tai li. Odila oja kala hai uja keshe efiku no ja mona oikulja jajo.

Ndelene okakadona eshi ka mona alushe odila ei, oka hafela unene etalelepo eli.

Ndele efiku limue eshi je uja vali oja li i na sha mokanja kajo. Oja li ja mona einjo pedu, ndele oje li toola po nde tai li etele okakadona. Divadiva je li tula kombete nde tai tuka po.

Ndele okakadona eshi ka mona einjo, ka tameke okulila. Otaka lilile oukukutu uomutima uako. "Nani ndi na odila i hole nge, osheshi einjo olo ondombuedi johole." Ndele mokulila kuako oka dimbulukua nokutja Kalunga opo e li. Opo ke lipopila momuenjo uako taka ti: "Haje a tuma odila je uja i hekeleke nge?"

Osho ngaha efiku nefiku oukukutu ua dja mo momuenjo uokaka-

Otatu tegelele natango omayamukulo geni komathigathano gaali (mu Febulwali nomu Malitsa).

Kristus oye awike na simanekwe.

„Omugundjuka oto opaleke ngiini ondjila ye yi kale ya yela? Ongele ti iutha koohapu dhoye." Eps 119:9.

Aagundjuka aakwetu mu Jesus Kristus, otandi mu halele eyambeko lya Kalunga, one ngele tamu kala moohapu dha Kalunga nokwiiutha kii-pango ye iiyapuki. Ngashingeyi uuyuni ou li po wa katuka onkatu onde, niiponga oyindji yi li po ye tu kundukidha. Onke ano, tu kondjeni shili nomatati ga kola nokwiikankameka koohapu dhOmuwa, oshoka opuye awike tu negameno.

Ngashingeyi otu li po twa fa twiigandja miikaha ya satana oye e tu pangele. Ihe awe, tu kondjeni, opo tu ka pewe ondjambi yesindano omegumbo lya Tate, uuna tatu ka imbeni eimbilo lyehambelega. Omuwa Jesus ota ti: „Ongame otandi ya mbala, nondjambi yandje ondi yi na oku yi pa okehe tuu ngoka yi thike piilonga ye." Ehol. 22:12. Eimbilo 405.

S. T. Shindongo.

EGALIKANO LYOMUGUNDJUKA.

Otse aagundjuka yongashingeyi, otse tu li po ngaaka, twa vulwa oku ku landula, Omuwa gwetu. Ongoye wa hili ndje mo moshilambo shekano nomenono lyontopo, ihe eitaalo lyandje efupi naamakeli yandje oyendji. Kalunga kandje, ongame omuntugwoye, sa ndje ohenda. Kalunga, ondi ku shi, ongoye wa shiti ndje oshiningitho shiikaha yoye. Tumina ndje aakwiita yomegulu okukondjitha aatondi yandje ye li po oyendji noya tsikitha omadhiladhilo gandje.

Eeno, Kalunga kandje, ondi ku shi u hole ndje okuza kuunona wandje, dhima po oondjo. dhandje omolwesilohenda lyoye, ngu kaleke oompadhi dhandje kemanya lyehupitho, ngu koleke oonkatu dhandje mepola lyoye.

Sospater M. Shikuele.

dona nde taka indile ombili omolu efimbo ke li hepifa.

Omuenjo eshi ua veluka, olutu jo ola tameka okuveluka.

Ove ngenge to vele ou udite ngahelipi? Pamue ou udite oujehame ua fa tau kukutike omuenjo uoje. Oto pumbua mbela odila i uje ku ove? Ile odila joje je uja nokuli?

OSHIKOLOLO SHEGUMBO

Omalutu getu.

Omalutu getu otwe ga pewa omagano ku Kalunga. Olutu olwo egumbo lyomwenyo kombanda yevi. Ano italu yelekwa nomalutu giishitwa yilwe, oshoka molutu lwomuntu hamu kala omwenyo ngoka itaagu kana. Moohapu dha Kalunga tamu tiwa: "Omalutu geni ondjambo yi nomwenyo, ondjapuki yo opalela Kalunga."

Kalunga okwa shiti omuntu oshifetha she, e mu fe muuyuki nomuuyapuki. Ano omuntu kee shi oshifetha sha satana muulunde no monyata kehe. Ihe tu taleni nawa twaa yakulile omalutu getu okahalu kuulunde kehe, ngashi taku tiwa (Rom. 13:14.) ha ngashi aavali oyendji taa kolekele oyana muulunde. Omugundjuka ngele te ende noondjila dhomilema, aniwa ontaagona tayi dhana omalondo, nenge oondjenda dhaagundjuka. Kalunga nani okwa utha aagundjuka ya ende ngeyi kombanda yevi, ye e ke ya ekelehi? Nenge ote ke ya hupitha tuu? Ye okwa gana a ti: "Shaa shoka sha

nyatekwa kuulunde, megulu itashi yi mo." Eyakulo lyuulunde otwe li indikwa. Okukalanawa okwo omagano ga Kalunga. Lesha nawa Rom. 13:11-14.

One aakriste ooyakwetu, kaleni mu noshimpwiyu shehupitho lyoomwenyo dheni. Omwenyo gwomuntu ihagu yonuka ngele a si, awe, otagu yonuka manga gu li molutu nduka, mombila tagu yi mo gwa yonuka nale. Ngele olutu nomwenyo ya yonuka kuulunde mokukala kombanda yevi, nena kaku na we etegelelo lya sha muusi.

Itashi vulika omuntu a shitululiwe molutu lumwe manga e li kombanda yevi, awe, olwo tuu ndoka aluke lwopanshitwe lwopetameko. Omuntu e nokuutha okukala kwe mwene, ngele muudhudhu nomuupwidhi, ngele muuyuki nomuuyogoki.

Olutu nduka tu lu na ngashingeyi, olwo oshilutu, oshoka okwa tiwa nduka otalu shuna mevi moka lwa zi mo. Ano otatu lu yeleke noshilya tashi kunwa momba. Shoka sha kunwa mo hasho we tashi zi mo, awe, oshipe tashi piti mo. Osho tuu noshilyalutu tashi yi momba mombila, e tamu ka za oshilyalutu oshipe, tashi ka gongelwa megulu.

Ngele wa tula uusila mumwe nomakaya, nando nau kale uutokele kau liwa we. Osho wo omwenyo ngele gwa vundakanithwa noonyata dha sha, Kalunga kee gu hokwa we. Kalunga okwa hala omwenyo kehe e ke gu hupithe.

Kotokela ano omwenyo gwoye omuyelele ongashi uusila uutokele, waa gu humbate molulu lwompunda yomakaya, opo gwaa ka ekelwehi esiku lyepangulo.

J. Leonard Manasse.



TUNGA EINEKELO MOMUNONA.

Omunona e nehalo aluhe okuholela aakuluntu ye shoka she mu adha, ongele enyanyu nenge oluhodhi. Olwindji nda ndhindhilike iinima yimwe maanona yaahongi yetu. Mokudhana oyi itsu wo miinima yimwe ye ya thiminike okuya kaakuluntu yawo. Ongele a pewa okati nenge okaando, nosho tuu nenge a kwathwa ku mukwawo moshinima sha sha, pamwe okwa tungu nenge a hongo sha nenge a kanitha sha, oye ta holoka pomukuluntu gwe noku mu hokololela. No nando omukuluntu e li miilonga iidhigu ngiini, nenge yi neulumo, oti ipe okathimbo okukundathana nomwana.

Okwi itula mo. A tongolola omwana moshipala okathimbo. Iipala tayi faathanithwa komauvitonapamwe, Oye e na wo oshitopolwa menyanyu lyomunona. Ngele omunona ta nik' oluhodhi molu okanima ke, oye ita wapa okuyola mpoka, awe, ihe te mu fudhitha noku mu ulukila ompito yelago epe. Osho omunona ta kokithilwa einekelo nomukumo gwokuholoka ishewe.

Nale twa popi omafano gomunona gomeni. Ogo tage tu kwatha okuuvako nawa shika. Okati hoka

ka ningi omunona e holike shili, ngele taka teka nenge taka kana, aanona yamwe taa lili nokuli ngashinaa naa wa silwa omumwoye. Oshindjwe shoye u noku shi pungula mpaka, opo omunona kaa dhimbulule nando sha ku sho.

Uuna a pewa ontanduulenge yininge ongombe ye, oku na omauvito tuu ngoka u ga na, uuna wa pewa ongombe ku ho nenge ku nyoko. Miinima nga mbika tu nokukotoka twaa shundule enyanyu lyomunona notwaaye mu thindile kofi yoluhodhi. Omagando nga ngaka: "To piyaganeke ndje!" "To kudhile ndje!" "Okalalo okashona hoka!" Ku shi kutunga!" nosho tuu otaga dhipaga einekelo. Omunona ta kanitha omukumo okuholoka koshipala shoye nokukundathana na ngoye.

Ope noshiponga shini po? Oshika: Uuna ta koko nota dhimbulula oondjo, ota nyengwa okuadha oshipala sha yina. No ngele e nuudhigu ota dhiladhila: pamwe meme ta yolo ashike nenge ta sheke ndje. Oye e ta mwena. Aakuluntu oyendji taa kundana iinima yaagundjuka yawo kaantu yamagumbo notaa yemata. Kotoka ano petamekolela waa teye einekelathano lyeni nomumwoye.

L. Mp.

Tashi kwatha shike omuntu nando ni ilikolele uuyuni auhe eta kanitha omwenyo gwe?

Mat.16:25,36



*“Oyo no ye mu sindi kombi-
nzi yOnzigona nokoohapu
dhomahokololo gawo noya
li inaa hokwa oomwenyo
dhawo sigo okusa.”*

Ehol.12:11.

Konda mpaka u pungule ehokololo ndika. Etsikilo tali ya.

Epandja 1.

ELIKO LYA ALUHE.

Iya shangwa ku Hilja Hahti.

Elundululo, hapaitya.

Aahokololi taa pumbiwa mo:

Omuhokololi I
Omuhokololi II
Klelia, omukadhona omuRoma o-
muyamba a valekeka.
Veronika, omupika gwe.
Marius, omumati gwa Klelia.
Omwilikigongalo.
Aakriste yalwe.
Aakwiita aaRoma.

Omuhokololi I: (Efalo)

Ehokololo ndika tali tu fala koku-
kulekule methimbo, konima yomimvo
omathele 19, una ukriste wa adhika
wa taandela moshilongo oshinene
shuuyuni mbwiyaka, osha Roma, no
wa thiki sigo koshilando shelelo lya-
sho shoka shi ithanwa wo Roma.
Uukriste wa taandele nokwendelela
nowa li tango u nombili. Ihe inapa
pita ethimbo ele, aapangeli yoshilo-
ngo shika oshinene, aakesari, ya ta-
meke okutidhagana nokuhepeka aa-
kriste. Oyo aniwa aatondi yoshilongo.
Omukesari gwotango, ngoka a hepeke
aakriste, oye Nero, ngoka a li shili
omudhudhu. Oshiponga shomulilo sho
sha fike po ombinga onene yoshila-
ndo sha Roma, Nero okwa paaakriste

uusama, aniwa oyo tuu ya tomeke
oshilando, nando a fa e shi ningi
mwene. Osho ngaaka a hwameke
ondjahi yaantu yokutonda aakriste.
Aakriste ya kwatwa, ya tulwa mondo-
longo, ya fikwa ngoonyeka oonene
miikunino yomukesari, aantu no ya
nyanyukilwa omililo ndhoka tadhi
minikile momilema .Yamwe yomaa-
kriste ya umbilwa iilikama. AaRoma
yonale, nando aapagani, oya li ya
humu nawa komeho miinima oyindji,
ngashi ya li aatungilela. Oya li yi
itungile ongulu onenenene, edhina
lyayo Kolosseum, omo ya gongala
okwinyanyudha. Pokati kongulu, pevi,
kwa li pu neha lyowala lya fa ete-
ngedhelo enenenene lyi ithanwa Arena
no lya kundukidhwa komikweyo dhii-
pundi. Omukweyo gwotango gwa li ko-
mbanda yekuma lya landula olungenge
lwa Arena, omukweyo gwokonima ya-
gwo gwa li pombanda kashona na ngo-
ka gwa landula ishewe pombanda, opo
aatali ayehe ya wape okumona shoka
sha ngingwa kuArena. Esiku limwe
aapika yaali ya tulwa ya kondjitha-
thane nomatati, sigo gumwe a sindwa
komukwawo, ngoka e mu dhipaga po,

okuninga omukesari ta gandja endhi-
ndhiliko lyesilohenda, esiku limwe
ishewe omupika e nokuya ko a ko-
ndjithe iilikama. Aakriste wo ya u-
mbilwa iilikama mbyoka ya kala
konima yiyela ya kola. Aakriste sho
ye ya kwArena, iilikama ya piithwa
mo no ye ya nukile, ye ya tuulagula,
ye ya umbile pombanda mombepo.
Ihe nando omahepeko omanene ngeyi,
aakriste oyendji inaa idhimbika Kris-
tus, awe, oya tindile muye sigo oku-
sa.

Omolwomahepeko nomatidhagano
aakriste inaa vula okugongala puuye-
lele momalongelokalunga gawo. Oya
gongala meholamo. Eholameno lya
tya ngaaka ye li mono peni? Oye li
mono moongulu dhoonakusa, dhi
ithanwa edhina lyadho ookatako-
mbe. Meni lyevi mwa ningwa oma-
kwena. Momakumamanya koombinga
adhihe mbali mwa hokelwa oombila,
dha fa uundjugo uushona, omo aasi
ya langekwa. Pomaha gamwe okwena
kwa ningi okunene, no pomaha ga
tya ngaaka aakriste ya li haa gonga-
la, ha mutenya, awe, uusiku tuu.

Tapu tsikilwa.

OUNJUNI TAU TONGO SHIKE



Ngashingeyi ihauto yi nokupita omeya omale.

ODULA INENE MU UNIONI.

Mu Unioni mua lokua unene. Momilonga omu nomeva mahapu, oikunino imue ja hanaunua po komeva neendjila da njonua po.

Omulonga ua Oranje ua li u nefundja linene. Olutenda pokati ka Unioni na Suidwes-Afrika ola njonua po jo komeva. Oshivike shimue omashina okolutenda inaa enda nande okudja koUnioni nokuja mu Suidwes-Afrika.

OMAHOOLOLO OVAKULUŃU VOSHILONGO SHA S. W. A.

Ehoololo lovakuluŃu vape va S. W. A. ola ningua kovatiliane voshilongo eti 8 la Malitsa. Konjala aveshe ovakulu va hoololululua. Aveshe kumue otava kala 18, muvo 16 vongudu ja Nasionale Party, 2 aveke va Verenigde Nasionale Suidwes Party. Vane ovo va ninga oiljo jepangelo lovene (uitvoerende komitee), ovo ovasamane A. H. du Plessis, J. H. Cloete, S. Frank na S. von Bach. OvakuluŃu ova ongala nokuli omolu oinima i lili no ku lili moshiongalele shavo (wetgewende vergadering). Oisho jomepangelo oja tukulua ngaha: omusamane du Plessis oku noshisho shemona, sheefikola, sheemina nosheefabrika deeshi, omusamane Cloete oku noshisho shoitauua, shoilonga, shoposa, omusamane Frank oku noshisho sheefalama, shee-

UNION OTASHI LIPANGELE.

Oshilongo Ehangano la Afrika loUmbuuŃu (Unie van Suid-Afrika, Union of South Africa) osha tokola shi lipangele okudja efiku lotete la Juni. Otashi lihoololele omukululuŃu uasho shovene (president), hano itashi ka pangelua vali kohamba ja England.

Unioni itashi kala jo vali mehangano loilongo ojo ja li ja pangelua ku Englanda (Britse Statebond, British Commonwealth), ndelene otashi kala nomaudafano na England kombinga jepopilo lohilongo nokombinga joimaliua nojemona likuao, okulanda po nokulandifa po ku tuikilue ngashi fijo paife.

Ohamba ja England eshi ja li omupangeli ua Suidwes-Afrika jo, epangelo la England ola pulua, Suidwes-Afrika otashi ka kala ngahelipi paife, Unioni eshi tashi di momake ohamba javo. Epangelo la England ola njamukula kutja kali na sha vali na Suidwes-Afrika. Ohamba javo oja li je shi peua ashike omolu epangelo la je mu Suid-Afrika, ine shi peua omolu epangelo la England. Hano Suidwes-Afrika otashi kala oshilongo osho tashi filua oshisho kepangelo la Unioni (mandaat).

mbeleua, shoveta noshiofitukuti, omusamane von Bach oku noshisho shouhakuli, shomapja noshomakuafelo e lili no ku lili.

PROFESSOR SUNDKLER OTA NINGI OMUBISOFI.

Ongerki oŃgua Luther jova Haja ku Tanganjika oja hoolola omubisofi omuSvede Dr. Bengt Sundkler. Oje a kala omulongi uelongo letumo moskola jokombada ku Upsala nokua shanga omambo ngashi Bantu Prophets in South Afrika (otali hepaulula oiveva joko Unioni) na The Christian Ministry in Africa (otali popi oufitangalo mu Africa) n. sh. t. Fimbo ina ninga omulongi uelongo letumo, okua li tete omutumua kedu lovaZulu nomukululuŃu kedu lovaHaja. Ope na eteelelo, pa monike omubisofi omudalelua mo ngenge pa pita eedula dimue.

OVAKAIŃU OVA NINGA OVAFITAONGALO.

Ku Svede no ku Noorvee ovakaiŃu vamue va japulilua paife moufitangalo. Ku Denmark ovakaiŃu vamue ova longa nokuli eedula dihapu moshilonga shoufitangalo. KoSoomi inave shi itavelua manga, nande sha kundafanua moshiongalelengerki.

OMAPIJANO KU ANGOLA.

KoumbangalaŃu ua Angola okua enda eengudu dimue da dja ku Kongo di hanaune po omaumbo nde di dipae ovaŃu. OvaŃu ve dule efele nokuli ova dipaua ngaha. Ovakuaita ovaPutu ova pameke epopilo leeŃaululi, paife ku nombili, vati.

OVAFILISHISHO VEEFIKOLA.

Omusamane Erasmus nomusamane Greyling ovo ovataleli (inspektors) vape va tulua po kepangelo va pashukile eefikola domo Vambo. Ovo aveshe otava tungilua eengulu poNdangua.

Otapa hoololua eengudu 6 dova Vambo (skoolrade) dokufila eefikola oshisho, 2 moUkuanjama, 2 moNdonga 1 moUkuambi, 1 koUninginino.

Eefikola oda hoololelua eengudu dovafilishisho, omusamane Brand uokoVenduka eshi a enda moNdonga nomoUkuanjama nomoUkuambi. Oiljo itatu oja hoololua kovakuluŃu vounona, ivali oja hoololua koNgerki, umue okua tulua po komupangeli uoshilongo umue okomukululuŃu ueefikola adishe.

AALESHI TAA NYOLA



Ongoye to dhimbulukwa evi e to li hugile, to li likolitha uuyamba; **OMULONGA GUA KALUNGA G'UUDH' OMEYA.** Ongoye ho ya menithile iilya, sho ho oopaleke evi ngeyi.

Eps. 64:10.

Henrik Sheetela kUubvley, te tu lombwele oshinima oshinene kaawambo ayehe noma ti ngeyi:

Ovakuetu mu Jesus Kristus, ofje ovambo otue linekela Kalunga e tu tumine odula. Kalunga alushe ote tu dimbulukua oku tu tumina odula, ndelene inatu dimbulukua okujandja ebandulo kuje. Ame onda diladila ngaha notua kundafana novamati vamue nde va pula oshinima eshi: tu indileni shili meengerka, nomoionga'ele, nomeefikola nomomaumbo omafiku nomafiku nomomaongalo aeshe Kalunga opo e tu filongenda. Ando tu udafane omafiku neehani onaini hatu indile odula mOwambo aische, ngashi mu Novemba osondaha imue, nomu Januari osondaha imue, nomu Apilili osondaha imue vali. Ngenge taku kundafana notaku udafana, omosondaha jofumba medu alishe. Ando tu shi ude jo fje a va tu li koilongo noilongo.

Omukuetu, ngenge tua peua odula, inatu dimbueni okuninga oingongi jomahambelole. Kalunga ne tu kuafe tu ninge ovalanduli vaje va shili.

Matias Paulus Amashisha, Oranjemund, te tu nyolele: Kalunga a hala nokuhalelela okuyoga omitima dhetu nombinzi yOmuwana Jesus Kristus nOmbepo Ondjapuki no a hala okuya meni moomwenyo dhetu ngashi ta ti: „Tandi thikama posheelo notandi konkola.” Ota konkola natango, tu mu egululileni oomwenyo dhetu, oye te tu pe evululuko. Mat. 11:28.

Simeon Linekela Shihungileni ta ti: Eumbo ngenge tali pi kese ou e li meumbo, ta hovele okukuafa. Ovashinda tava tondoka va dime omudilo. Ovakriste fje, tatu peua ku ljelje ekuafu? Kristus okue ja okudima po omudilo uomukengeleli a hala oku tu njona po. Openi hai mono etulumuko? Ngenge tandi lijandja kOmuene Jesus.

Jeremia J. H. Ekandjo, te tu shangele kutya, omukriste kehe e nokudhimbulukwa nkene e nokutegelela Omuwa Jesus. Ano lumwe aluke Jesus okwa sa, lumwe aluke okwa yumuka. Ano lumwe aluke omuntu e nokushashwa, oshoka eyogo lyoondjo tali gwana oku tu yoga twa pwa.

Andreas M. Haingkumbi na Erastus W. Nakatay, Omaruru, otaa kundu aakriste yomOwambo noohapu dhombimbili Eps. 37:1-40 na Kaaheb. 11:32-40.

Petrus Haufiku, Okahandja, ota ti: Ovamuameme, lipamekeni mOmuene nomeefigono dajje mu uape okukondjifa omutondi uetu. Omatati oo aa: evangeli loshili nohole nolukeno nombili.

E. J. Tobias na M. P. Nkandi Mateus, Windhoek, taye tu hokololele enyanyu enene nkene ya mono esiku etoye mu krisimesa, aamati 12 ya shashwa naaherero 2. Naamati ya kolekwa ya li po 8. Aamati aakriste ye shi nyanyukilwa unene.

Simon Shaanika, Okahandja: ota kundu aagundjuka ayehe nokuipula wo kutya, uunake tatu ka ninga aantu ya Kristus ya shili, oshigwana sha hogololwa ku Kalunga okugwanitha ehalo lye?

Absalom Matheus, Walvisbaai, a nika uuthigwa omolwaamati mboka ya hokwa iikunwa, nkene iikunwa mbyoka tayi ya longitha okuyona oshipango oshiti 7 wo, nokude nga nokudhipaga ooyakwawo. Ota ti: „Ovalumeñu oovakwetu, tu lididimikeni tuha puile moanima i fike apa.”

Johannes Nd. Shilomboleni, Tsumeb, ta hambelele Kalunga, shoka a li te ehama nokwa kala moshipangelo oomwedhi 7. Nando a mono uudhigu okwa adha aamati ooyakwawo aakriste ye mu imbile oondjimbo dhomogulu nomolwa sho ta nyanyukwa nokuhambelela Omuwa.

F. Ita Iilonga, Walvisbaai, ta halele aaleshi ayehe yOmukwetu omumvo omupe gu nelago. Nomumvo nguka gu nelago shili ngele tatu kala mu Jesus Kristus nokuigandja kehalo lye.

L. Keendjele, Otavi, ta kundu aaleshi yOmukwetu: Uuyuni nando u udha uuwinyai, Kalunga ine tu etha nomolwontalanteni yOmuwa inatu yonwa po natango: Ontakumandjimbo. 3:22-23.

Titus Hango, Olukonda, ta ti: Ethimbo ndika edhigu, oshoka aantu oyendji kaye nethimbo lyokuholoka koongundumbimbili dhawo, unene aalumentu. Tu dhimbulukweni, ayihe hatu yi likola nohatu ipaluthitha nohatu ipyakidhile nayo, ohatu yi pewa kesilohenda enene lya Kalunga.

EPUKULULO.

Ondu uvite shili ohenda onene omolu epuko enene li ikuna mOwambo no mUushimba wo. Aluhe mombelewa ya Swanla mu Grootfontein ohamu kala oombapila odhindji shili. Omuntu manga e li mu Grootfontein, ota tameke ashike okunyolela kegumbo noku nyola kombanda oadresi yomu Grootfontein nande hamo e no-

Johannes Kulula, Oranjemund, te tu nyolele nenyanyu enene ngaka: Otandi pandula shili Kalunga omolu esiku ndika lyakrisimesa. Onda li ndu uvite enyanyu nenene ndjoka li vule ookrisimesa adhihe dha piti. Otwa li twa gonga'a okuimba oondjimbo oondjapuki nokupulakena oohapu dhomuwa. Osho wo omukwetu omuholike mOwambo, landula Omuwa, oshoka oye omutoye shili. Noohapu dhe dhi noonkondo.

OMUKULUKADHI OKWA KONDJO.

Okwa li omuselekadhi a koko omukulukadhi gwomimvo odhindji. Oye ina uvako we nawa nuunona womeho ge waa ko. Oye a kala mokagumbo ke ka li kooaha dhondjila, no ndu uvu omukulukadhi nguka okwa popi mokule, e ta ti: „Za po mpoka, nda ti. Jesus Kristus, Omuna gwa Kalunga, oye Omukulili gwandje, ongame omuntu gwe.” Ongame no nda yi mokagumbo no nde mu pula, nda ti: kuku, oshike ano? Olye e li mo te ku kondjitha? Omukulukadhi okwa ti: hamuntu ta kondjitha ndje. Osatana tayi fundjaleke ndje. Oshifundja sho she ya mo no sha ti: omukulukadhi ngoye, oto si, oto si, ondjala tayi yi na ngoye. Nda li nda pula satana: Ngoye wa shiti ndje? Ngame sho nda li okanona, ngoye wa hupitha ndje, aniwa ndi kale ndi nomwenyo?

Awe hangoye, satana wa shiti ndje, hangoye wa pe ndje iikulya, hangoye wa gamene ndje, awe, awe. Kalunga kandje okwa shiti ndje; oye nokwa gamene ndje; oye nokwa tumine ndje Omukulili Jesus Kristus, Omuwa gwandje. Oye a kulila ndje nda li omukani nomugelwi, nokwa mangulula ndje moondjo adhihe, oye a futile ndje oongunga dhandje, ngame inaandi pumbwa sha. Onke ngoye, satana, za po mpoka.—Omukulukadhi nguka osho a kondjitha satana.

Vulikeni ano ku Kalunga, kondjitheni ondeveli, oyo no tayi mu tembuka, Jak. 4: 7.

J. W.

kulonga moka. Omuntu sho ku uvu „Nima” oku li mu Grootfontein, nena ota tameke ihe oku mu nyolela. Osho ngeyi oompunda noostombe dhenni tadhil hepa owala. Pamwe yamwe oya tula mo imaliva, notayi kana owala, oshoka tse katu na mpoka tatu yi fala.

Tegelela ano omuntu a thike kii-longa nkoka ta ka longa sigo te ku tseyithile mpoka e li. Nongele ita shi vulu, nyola „afsender” koho opo yi ku galukile.

Juuso Katangolo,
Nuwe Swanla, Grootfontein.