

OUVALELO UJAPUKI.

1Kor. 11: 22-29.

Olutu lOmuene talu liua.

Oshilja ngenge itashi uile medu nde itashi file mo, otashi likalele, ndele ngenge tashi file mo, otashi dala oilja ihapu. Joh. 12: 24. Meudifo lonena Paulus ta eta etumbulo la Jesus "Eshi olutu luange talu jandjua poñele jeni."

Olutu talu njanjaulua lu ninge oipaluifa jeemuenjo dovañu. Omuenjo uange naave u kute. Oshike ovakuancongolo ihava holola ekuta eli, mokukala kuavo? Osheshi kave neeñgono okuninga eendobuedi dOmuene. Omoluashike?

Paulus ote tu pe enjamukulo meendjovo donena moverse 23. "Onda peua kOmuene." Hano ovakriste eshi itava holola ekuta olo, inava peua ehololelo la uana momasakramendi. Hano omuñu ehe neshiivo la uana, ita peua sha komasakramendi, osheshi ote a li ngoikulja jopaunjuni. Ngashi vamue pOuvalelo tava leme ehola va nue shihapu. Vamue tava akama neeñgono mu je shihapu. Ovañu va tja ngaha otava li nai, itava peua sha.

Ohonde jOmuene tai nuua.

Ehanganolumbakano la Kalunga novañu, inali fa lokomunda Sinai, oko ovañu va li va tila, shaashi kapa li oñgenda. Oukumue uomeholo eli, otatu ku kuatakanifa na Kalunga moñgenda. Omukuetu, tu hambelelele Kalunga omasakramendi.

Andreas Kañalelo.

KEE MO MUKA.

(Mark. 16:1-8)

Omukulili okwa yumukile elago lyetu, opo na tse tu ze moombila dhuusi wuulunde no tu ka yumuke wo

meyumuko lyaasi, tu li aanamwenyo yomuye ngele twa itaala eso neyumuko lye nomwenyo gwaaluhe ngoka gwa kala muye.

Ooitaali ye oya gwana okunya-nyukwa oshoka oyo ye na omusindani meso noshilonga shawo osho shi kale shokuhokololela mboka ye li natango muumbanda weso nowekano lyaaluhe kutya:

"Jesus okwa sindi oonkondo adhihe dha satana nodhuulunde nodheso, onkene ileni tu yeni ku ye okemanya ndyoka li nomwenyo", Petr. 2:1-5.

Ooitaali itaa pumbwa okulimbililwa ngele ku na omauukukutu ga sha maantu. Pamwe itaa hala okulunduluka mokukala kwawo okukulu ya ninge andola mbalambala aape.

Omuwa mwene ota ka longa oshilonga oshikumitha. Osho aakiintu mbeyaka ya li noshimpwiyu shemanya ndyoka lya li lya siikila ombila, ihe sho taa thiki ko, otaa kundwa ashike:

"Oye a yumuka, kee mo muka." Osho oonkondo dha Jesus dheyumuko lye tadhi longo notadhi ka longa ka mpoka pwa kukuta, shaa tuu tapu longwa meinekelo lyokuiinekela Onakuyumuka. Okwa li a sa, ihe oku nOmwenyo. Ombila inayi mu kwatelela mo "Kee mo muka, a yumuka."

Omuwa Kalunga na kwathe uuyuni we u mone oonkondo dheyumuko lya Jesus dha gwana opo esiku tali ya ku adhike oyendji mboka haa dhiladhila nohaa kongo mbiyaka yokombanda molwa Jesus Omukulili gwetu. (Kol. 3:1-7)

Herman Sakeus

JESUS TI IHOLOLA MOONKUN-DATHANA.

Pethimbo lyongashingeyi aantu oya simaneka oonkundathana. Oonkundathana odho wo omutaandelithi gwiiningwanima.

Omuyumudhwa oti iholola moonkundathana dhaalongwa yaali mondjila. Mbala okwa yi moonkundathana dhawo, nokwa pula: "Otamu kundathana shike molweendo lweni?" Osha holoka oyo oya kundathana Jesus omunankondo. Moonkundathana mwa holoka iikumitha moverse 17. "Nokwe ya fatululile adhihe dhe mu tiwa momanyolo" Oshikwawo "Kala putse." Ihe keindilo ndika okwa kala po shili puyo. Nena omeho ga tonata oye mu dhimbulula nawa. Sho ye mu dhimbulula, oya hokololele ooyakwawo: "Omuwa okwa yumuka shili." Simon ngoka e mu idhimbike, e mu itaale nenyanyu enene.

Jesus oye omupulakeni gwoonkundathana adhihe dhomuuyuni. Ota hedha popepi naambaka ye li moonkundathana dhetungo lyoomwenyo, na ndhoka tadhi hokolola Jesus, na shoka sha ningwa ko. Ihe ota kala kokule noonkundathana dhaa na etungo lyuwanawa. Muuyuni, miilonga, momagongalo, moondjila nosho tuu omu udhilila oonkundathana. Epulo lya Jesus oli li popepi na ayehe. "Oonkundathana dhethimbo ndika odha shike? Ngiika aakuluntu momagumbo ya kundathana okukala nawa kwomuuyuni mbuka. Moombilive dhookuume, moonkundathana itamu hokololwa omuyumudhwa. Moondjila Jesus ina kundathanwa. Ngele ongeyi, Jesus ita hedha moonkundathana dhetu. Omeho getu itaga tonata, ye itetu fatululile adhihe tadhi tu nyenge.

Opu na wo yamwe ya adhika taa kundathana Jesus omuyumudhwa. Otwe shi dhimbulula miifo yimwe sho mu na oonkundathana oombwanawa, tadhi tungu noku tu kumidha. Moosikola, nomomagumbo otamu kundathanwa Jesus omunasaret. Oye ndji ye shi holola sho ya dhiginine oonkundathana ndhika ongulohi nongula, notwa indile: "Kala putse." Otatu ya halele ihe ngeyi: 1 Kor. 15: 58. Ihe ku yalwe, ando Kalunga awike a kale miinima ayihe, nomoonkundathana wo.

Oonkundathana ndjika yeyumuko lya Jesus, oyi vule oonkundathana adhihe muuyuni. Onke oonkundathana Kepandja eti 2.



April 1960
EENĠONO

Omuñu eshi ina kola naua otashi talua mboli e he na eeñgono da uana. Eeñgono tadi kongua pamikalo dilili nodilili, shashi keshe umue ta djuulukua ile ta lalakanene a kole nokukolelela ile a kale e na omuenjo nde e na eeñgono. Oñumba ta kongo oikulja tai pameke olutu a mone eeñgono, ongadi ta i komuñu a nue ile a peue sha moluoukolele. Ovapaani vahapu nande tava shashua mongerki jetu nde tava ningi ovakriste, natango tuu tapu diladilua ngashi moupaani nokuli kutja, eeñgono nomuenjo tau monika komiti noimbodi (ile koikunua!) tai kongua komikunda. Natu etelue omuñu atjangaha a kuafua shili! Pamue ita hangika nande. Ovakongi veeñgono datjangaha novajandji vomiti datjangaha va fa tava kala inava mangululua natango moupika uoupaani ile uomikalo dikulu dongaho.

Eeñgono itadi monika kombingainja.

Oikulja otai tungu olutu, heeno; ndele eeñgono dolutu inadi uana omuñu natango, ahoue. Vamue va fa va penduka nokupashuka tava diladila ngashi ovaroma nalenale kutja: eendunge odo eeñgono (kennis is mag). Shaña ta ehene komesho mokusiiva, oje ta ningi omunaeeñgono. Omuneshiivo ta fimanekua, fikulimue ta filua efupa nokuli ku vamue ndele ta dimbuluka kutja oinima ojo je mu njenga shito, itai mu njenge vali. Eshiivo lilili nolilili otali kuafa omuñu unene, ndelene itali mu etele natango eeñgono dasha. Ngashi omukriste, nande ta shiiva eeñango da Kalunga nehongo ñumbi a kulilua nena eshiivo lovene ka li neeñgono dokufindana momamakelo noshotuu manga ina tambula Kristus muene neeñgono daje momuenjo uaje.

Uditeko tuu? Eeñgono tadi jandjua ku Kristus muene. Taleni ñge eeñgono deulu nomuenjo mupe ue tu longekidilua momushijakano ua Kristus nomenjumuko laje! Eeñgono dashili nomuenjo uashili mu Jesus Kristus omo tuu omo amuke u li. Ei aische i tambula oshali mokulihupipika koshipala sha Kalunga nokudulika kelaka levangeli nokuefa eeñgenda-balo doje dimue dilili dokulikongela eeñgono moinima i he nekuafu! Kala u na eeñgono da uana odo da dja mu Jesus Kristus, mefjo nomenjumuko laje!

Edi odo eeñgono da shili.



OMBILI YA JESUS.

Joh. 20: 19-31.

Ombili otayi lalakanenwa muuyuni aube, oshoka oyo tayi koleke oshilongo, neendathano lyaantu naantu.

Aalongwa ya Jesus ya kanitha ombili, oshoka ya limbililwa pamwe ita yumuka.

Okuenda kwomukriste otaku uka momalimbililo omolwomauudhigu ga sha. Jesus ta hedha kutse, manga tu li muumbanda, nomomalimbililo nota ti: "Ombili nayi kale na ne."

Ongoka ti itala ye mwene, ita sindi noita vulu sha. Aalongwa manga ya li yaa lwete Jesus, oya tyololoka, ihe sho ya pewa ombili noye mu ta-

Jesus ti iholola

na odhindji momagumbo, mookomboni, moondjila, miifo nosho tuu ando dhi kale ndhika: "Omuwa okwa yumuka shili. Otwe mu mono sho a tonatitha omeho getu moonkundathana piililo yetu, moongundumbimbeli, moosikola e tu fatululile omanyolo. Mboka Jesus itaa hedha moonkundathana dhawo, oyo oohepele ye vulike kwaayehe. Aayamba otaa hokolola eso, eyumuko, sho ya fatululilwa omanyolo, notaa indile a kale puyo. Otaa fala ihe ehokololo ndi: "Omuwa okwa yumuka shili." Jesus omwalelwa, nomuyumudhwa, molwandeje ota pula aaleshi yOmukwetu: "Otamu kundathana shike mokuenda kweni?"

Kleopas Dumeni.

IIGONGI MENONGELO LYAA-YAKULIGONGALO MENGELA

Oshiongalele shovaudifi ovo va peua eitavelo lokuudifa kepangelongerki, naava tave li kongo paife, tashi ka ongala mEngela eti 6-10 April 1960.

Oshiongalele shovaevangeliste tashi ka ongala eti 26 April - 1 Mei 1960.

OOKAUME KA JESUS.

Joh. 15: 14.

Onje ookaume kange, ngenge tamu ningi eshi handi mu lombuele. Eli elaka la Jesus kovahongua vaje. Okua lombuela ovahongua vaje shike? Okua tja: "Ngenge tamu diinine oipango jange, opo otamu kala mohole jange."

Omukulili oje muene a hoolola ovahongua vaje, va ninge ookaume kaje, vo va uanife ehalo laje.

Ookaume ka Jesus ovo epata laje kombada jedu. Osheshi ou ta longo ehalo la Tate meulu, oje omumuame-me omulumenu nomumuameme omualikadi na meme. Mat. 12: 50. Ovo jo eedi daje. Eedi dange odi shii nge. Joh. 10: 14. Ove li meongalo. Omadina avo okua shangelua meulu. Hafeni, shaashi omadina eni a shangelua meulu. Luk. 10: 20.

Ovaholike vOmukulili ava alushe otava ifanene ovakani mongerki ja Kristus. Ohava imi oiimati. Onde mu tula po, mu je, mu ka ime oiimati. Joh. 15: 16.

Ovauambo, ovashuni moupaani ihava longo pahalo la Kalunga. Ova-dinikalunga novapaani vomounjuni aushe, kave li mOho, mOmushiti.

Aveshe ava ve he li moukaume ou ua Jesus, ove li hana, vo kave na Omufita.

Simson Ndatipo.

la, oya nyanyukwa, oshoka oye mu dhimbulula.

Mokati komalimbililo getu, Omuwa oku li putse nokwa hala oku tu fudhitha nombili ye onkumithi.

Ombili ndjika kayi shi kuyelekwa noombili dhaantu hadhi lunduluka omolu okutumb' oshinyenu, nokutonda ookuume nokuli.

Jesus ote tu ulukile iikaha ye ya ululwa, omolwoondjo nomayonagulo getu. Tu mu dhimbulule oye oku nomwenyo nokwa sindi eso elulu.

Ombili ndjika itatu yi pewa tu yi pungule owala moomwenyo dhetu, awe, oye ote tu tumu tu kale aataandelithi yayo.

Ombili yini u yi na momwenyo gwoye? Ombili ya Jesus nenge ombili yuuyuni?

Malakia Alugongo.

OKAANDJETU



Aasitagongalo Simson Shituua na Sa-
keus Iihuhua oyo yomongundu yota-
ngo yaasita ya yapulilwa oshilonga
shuusitagongalo omumvo 1925.
Omusamane Hukka ta kundatha-
na na yo moshigongi.



AASI.

kUukolonkadhi.

Jasoni Paulus a si 26. 8. 1959.
Paavo Ipinge a si 17. 9. 1959.
Tomas Ashimbanga a si 8. 11. 1959.
Salmi Josef a si 29. 11. 1959.
Maria Nasimanekue Shoombe a si 21. 2. 1959.
Abraham Taati a si 1959.

EKUNDO.

Sho twa thikama tu ka fudhe manga kashona kOsoomi, otwa hala okukunda aakriste yOwambo noyOkavango noyUushimba nokumupandula noku mu halela eyambeko lya Kalunga. Ethimbo nando efupi lyoku ka menekela kOsoomi, etata lyomumvo alike, otu uvite, onawa oku mu nyolela ngeyi pafupi oohapu dhelaleko.

Ethimbo ndika tu li na ngashingeyi, olyo ethimbo lyeyeleko kaakriste. Nomathimbo ga tya ngaka haga pumbiwa, ukriste u monike, ngele wa kola moomwenyo, nomomikalo nomokukalathana kwaantu. Omuwa mwenne a ti, omahongololo oge nokuya. Mboka ya yelekwa ya monika aadhinini naaidhidhimiki, Kalunga te ya uvanekele oshishani shomwenyo. Mboka taa suunye, ye li popepi noshiponga. Na mboka taa hongolola, ya yi mo musho nokuli.

Otamu pumbiwa aakriste mboka ye noondunge ya dhiladhile nawa iinima muuyelele wOohapu dha Kalunga no wOmbepo ye. Otu nokukonakona nawa oombepo, ngele dhoopalelathana nehala lya Kalunga nokudhiginina nomukumo shoka shoshili. Aanelago omboka taa dhiginine nomwenyo gwa yela ehupitho lyomOmukulili, yi igandje wo mokutaandelitha evangeli manga ku nethimbo. Ukriste u nevaneko lyokukala kwaluhe nolyokukala kwongashingeyi.

"Otu shi shi kumboka ye hole Kalunga iinima ayihe otayi longo mumwe uuwanawa."

Leena na Alpo Hukka naanona.

OMUKWETU ta halele omuwiliki ngerki Hukka negumbo lye efudho ewanawa li neyambeko.

ESHI NASHI DIININUE KEHALO NO KEEŃGONO DEPANGELO LOSHILONGO.

Heeno, oŃgenda unene, omoluoshilongo shetu shOuambo tashi aanje okuuanenua kekulilo, nokudiinina omalongo eefikola.

Heeno, onda talatala keembinga neembinga dounjuni, ndelene onda njengua okuuda ile okumona oshilongo hashi jandje eefelo kounona va je koilonga ava ve li oinovele natango, ile inava pita momalongo, nando Ouambo ja hula ko eefikola. Eefikola odi lile po tuu naanaa ounona. Oshinima osho omedu letu amuke hashi longifua. Onaini hano tashi hulu po?

Ondi shi shii omadiladilo etueni otaa ti ngaha: "Okanona naka je koilonga, opo ka hupife ovakuluŃu vako." Omadiladilo oo ngenge oo to longifa, otashi ti, oua hepeka omadiladilo oje, shaashi okua ja ashike ndele aeshe taa ka hulila moluhepo lomuhoko ile loshilongo ashishe. Ngaa-shi paife shoo konjala shi li koshi joluhupo eli li na oku ka hulila ashike mefjo.

Otue shi shiiva nalenale kutja, ounona avesho mounjuni, nomoilongo aishe otaa pumbua omalongo. Ndelene ounjuni aushe, noilongo joo, otai lalakanene kutja, ounona ove na okumona tete omalongo. Opo nee okanona keshe ngee ka piti mofikola, opo taka peua oŃito oku ka tameka oilonga. Tashi ti, olutu ola jeleka oilonga neendunge daje tadi uapalele okukala pamue novatiljane. Omukalo oo uokudiininina ounona meefikola keshe moshilongo, oua diininua kepa ngelo loveta. Kashi na mbudi ngenge ino hala okaana koje ka longue, ndelene moluoveta ou na ngaa oku shi ninga. Otu shi uete kutja, oludalo alishe eshi tali aanje okumanako omalongo, osheshi epangelo loshilongo shetu ihali longifa omukalo oo oveta. Ohai shi hafele unene, ngenge tamu jandje oŃito omoluoludalo leni li kale hali tetekele okulonga, opo nee

OHAMBA JA FJA.

Ohamba jovakualudi, MUALA NASHILONGO, okua fja eti 29 la Februarie 1960. Okua li e needula, vati, 95 nokua kala moshilonga shouhamba okudja 1908 fijo 1947. Momudo tuu ou poŃele jaje okua hoololua omukua shashi je muene ina kola naua.

keshe kamue komounona ngeenge taka i koilonga, otaka peua eefelo kovalongi, ile komango jofikola. Okanona keshe fimbo kehe li kohambo, ile pe he fi pefimbo loufita, oshilonga shako okukalela omalongo.

Ovapangeli vange, omoluomalongo ohandi mu ilikana, mu jandje oŃito, omukalo oo u tamekue okudiininua nokuli momudo 1961. Neindilo lange kunje olo eli kutja: Oshinima eshi nashi je meeŃgundafana domapangelo aa avala:

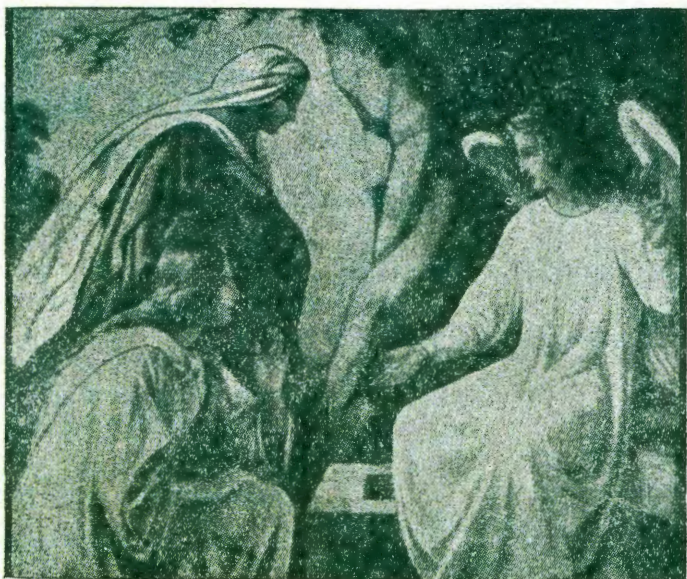
1. Omalenga, novanamikunda moshilongo keshe.

2. Ovafita, ovalongi veefikola, novakuluŃu veongalo moshilongo keshe.

Ounjuni noilongo jo oja hula ko okuuda evangeli lijapuki, nokulonga ounongo uokulihupifa pakukalalutu kuomuŃu. Ndelene oshilonga shetu oshi na natango eengudu dinene edi tadi pula ehupifo levangeli. Oshike tuu mua ti? Nomalongo eefikola otaa kuafa tuu shike omuŃu? Ovapangeli vange, fileni oludalo leni oshisho li mone epukululo. Ohai tee-tele Epangelongerki li njamukule nge mOmukuetu kutja, heeno, osha juka, notashi longekidua, opo tuu shi kale sha ningua.

Pamue nomakundilo ohole koshiuana noshuana sha Kalunga. Rom. 15:5-13; 1 Tim. 1:1-5.

E. H. Shipo.
Tsumeb.



OMUWA OKWA YUMUKA.

*Natu imbe, natu tange
Omuwa okwa yumuka.
Natu mu simanek 'atuhe,
Moondjo kwe tu hupitha!
Natu imbe, Natu tange,
Omuwa okwa yumuka!*

*Una sho kwa zi mombila,
Shili kwa li ta adhima.
Eso, heli, katu tila,
Geelo sho lya kandulwa!
Natu imbe, natu tange,
Omuwa okwa yumuka!*

*Jesus oy' omwenyo shili,
Tse wo te tu mwenyeke.
Ite etha twaa na mbili,
Ngashi kwe tu lombwele!
Natu imbe natu tange,
Omuwa kwe tu mwenyeke!*

*Die Halleluja 86
Lya ndongekwa ku Noa Markus.*

MONDJILA YA EMAUS.

EKUNDATHANO MOLWEYUMUKO.

1. Omuidhimbiki
2. Kleopas
3. Nima ya Nima.

(Oye li mondjila taye ende. Omuidhimbiki ote ya landula noku uvite shoka taa popi nosha fa she mu kumitha nke te ya pula.)

1. Onkundathana oya shike ano mu yi na mondjila yeni?

(Oyo oye mu keuka, ihe inaye mu dhimbulula kutya oye oye, Kleopas nokwe mu yamukula.)

2. Nani ongoye awike maakwiilongo yomu Jerusalem inoo uva, shoka sha ningwa pomasiku ngano?

1. Oshishike?

2. Nokutya Jesus omunasaret, omuhunganekilela moohapu nomiilonga ku Kalunga nokaantu ayehe, aakuluntu yetu osho ye mu gandja a se noye mu aalele komushigakano, nonando tse twa li tu shi ote ya okukulila Israel.

1. Nani osho mwa kala netegelelo lya tya ngawo, i, ano etegelelo lya tya ngaaka lyOmukulili omwa fa naa naa mwe li kutha momanyolo omakulu omayapuki. Ngashi lya tamelwa mu Abraham sho kwa tiwa "Moluvalo lwoye otamu ka za ngoka iilongo ayihe tayi ikolelele kuye. Sigo Kalunga a dhike po ombinga ya David nokutya omuye tamu zi Omukwaniilwa e vule aakwaniilwa ayehe.

3. Eeno, ando osho tuu, ihe Jesus ina longa i itala omukwaniilwa ngashi sha popiwa. Tango okwa li a hokiwa kaantu ayehe shili, ihe muye mwene ina konga etungo lyiilongo nokwa tondo nokuli okukondjitha aaniita na ye.

1. Ano ngele ongawo, oku li ne naa naa molupe lwehunganeko ndi tali ti; oye ita longitha iikondjitho yaakuuyuni ye ita piitha ombinzi yaathiminiki ye. Nenge ngashi Jesaja a tile: "Okwa tumu ndje ndi uu-

vithile oohepele nondi mange omitima dha nyanyauka ngame ndi tseyithile oonkwatwa emanguluko naathiminikwa ombili nondi ya tseyithile omumvo gwohenda yOmuwa.

(AayEmaus oya kumwa noya yamukula oshita)

2. 3. Eeno shili, konyala twe dhi dhimbwa po. Okukala kwe osho kwa li naa naa shili.

3. Ihe nando ongaaka oye mu tondo, okwa fa omuwinayi kuyo, oshoka oye mu kwata noye mu endjeleleke komuti gwesithahoni, na mboka ya li po oyu uyagana noku mu sheka naakwiita oya topolelathana oonguwo dhe montaneho ye.

1. Iikumithalonga shili, ihe osha monika naale momanyolo mEpsalmi 22 omo shi li: "Oya topolelathana oonguwo dhandje noya anekele elwakani lyandje ya mone ngo te li kutha po. "Notamu tiwa ishewe: "Oyu ulula iikaha noompadhi dhandje nelaka lyandje lya kakatele koondathe-lo."

3. Osho ye mu ningila, ihe oshi nekwatho lya shike sho ye mu hanagula po noshilonga she osha siithwa ohoni montaneho yaantu. Ou shi pamwe osho sha halika ku Kalunga? Tse oshe tu nyenge.

1. Ne aakwashike ano sho mu nelimbililo lya tya ngaaka? Kalunga otamu mu dhiladhila ngiini? Omu shi oonkondo dhe odha hulithwa keso? Ha ta vulu okuthikitha ompangela ye nando e li mondjila yeso?

2. Ote yi thikihta ngiini sho etha omuyapuki gwe a hule po? Ando kwa li te mu akula mo manga e li kokanyengenyenge keso ote mu pe esindano montaneho yaatondi ye, ihe nani hasho a ningi, ngashingeyi ethimbo lya pu po kapu na we ekwatho.

1. Ote ti: Otamu dhimbululwa tuu omutetekeli gwe Johannes Omushashi okwa ti oku nokukala ngiini?

2. Okwa uvitha kutya oye ta ningi onzigona ya Kalunga.

1. Onzigona ya Kalunga omu shi shi oyo oshike?

3. Aawe, katu shi shi nawa.

1. Nani omumvo kehe motempeli ihamu dhipagelwa onzi yopassa yi ninge edhimbulukitho lyekulilo lyomuupika womu Egipiti. Ano Jesus osho a uuthilwa a ninge onzigona ya Kalunga yaa noshipo sha sha, tayi humbata po oondjo dhuuyuni ahe. Inashi mu kumitha sho a si moshituthi sha Passa? Inashi fa i itula peha lyonzi yekulilo? Ha ye nani euudho lyalyo.

3. Shimwe ashike ndi wete shi imba po, oshoka inaa dhimbulukiwa kaa-

saaseri yetu ya fa ye mu tala owala a ekelwahi ku Kalunga. Noye mu ekamene omakana noya ti ni ikuthe ko ye mwene komushigakano. Omolwashike inaye mu dhimbulula?

1. Eeno shili, omolwashike ano? Nomolwashike nane hamu nyengwa okuitaala? Hasho shika Jesaja kwe shi hunganekele ishewe sho a tile: "Kee na nando olupe lwokutalwa, ihe okwa dhinika. Tse okwa li owala twa tengeneke ta monithwa uudhigu we auhe a geelwa ku Kalunga." Ihe sho a longo ngashi e shi pewa, - na ne moku shi mona otashi mu limbilike. Eitaalo lyeni eshona ngiini ano? Nenge na ye mu lwete a limbiliwa pamwe, sho a li meso?

2. Aawe, puye kapa li elimbililo.
3. Pamwe omolu uwehame wokolutu, we mu tilitha lumwe aluke sho a ti: "Kalunga kandje, Kalunga kandje, oshike we ekelehi ndje?"

1. Eeno, elilo ndino oli li wo mepsalmi eti 22 nolya ningi olwoondje lwe mesiku lyeso. Odho adhike a hulitha na dho?

2. Aawe, okwa popi ishewe ohapu yimwe yomepsalmi eti 31, a ti: "Tate, ombepo yandje otandi yi gandja momake goye."

3. Nohugunina okwa ti ishewe: "Sha longwa sha pwa." Nopo ihe okwa yi meso.

1. Eso alike a popi?

2. Aawe, sho a tameke oku tu lombwela eso lye, okwa ti wo, ota yumuka ishewe.

1. Okwa ti ota yumuka uunake?

2. Okwa ti otapa piti omasiku gaali, etitatu ota yumuka.

1. Ano etitatu unake?

3. Etitatu onena tuu ndjika noku-li.

1. Nani nkee kwa shile mu uve sha. Aakulukadhi mbeya ya menekelele kombila inaye mu etela elaka kutya kee mo we? Omu shi ina za mo shili. (Aayemaus oya mwena ya kumwa inaya popya we sha.)

1. One aasama yokuitaala iipopwiwa ayihe yaahunganeki. Hasho tuu ngeyi Kristus a li e nokuehamekwa nomolu uwehame we a taambe esimano lye? Nenge omu shi Jesus ota ningi Omukwaniilwa gwopantu, eta pangele nando uule woomvula 30 nenge 40 no ngele a si, eta fumvikwa pamwe na kwaniilwa ooyakwawo ye ita kala po we? Ando osho sha ningilwe ando sha taandele nayi pamauvaneko. Sha longo tuu ayihe mbyoka ye mu aadha oyo mbyoka e yi uuthilwa. Nonge mwa hala okutseya kutya ekwatho lyomushigakano gwe olini, olyo ndi lya popiwa ku Jesaja ngashi e wete omuti gwomoshilongo sha Israel tagu kewa po, nokoshithindi taku tuma oshitutuma oshipe nosho tashi hupithwa, niihupe yaayapuki otayi mono ekulilo, lyo itali hulile mu Israel, aawe, otali yi sigo okondongolondongo yuuyuni, nomesiithohoni lyomushigakano omo tuu amuke mwa tameke ekwatho lyekulilo." Sho a tsuwa omolwomayonagulo getu, oshikondjitho okwe shi iukitha ye mwene tse tu kale tu nombili notwa aaludhwa kiilalo ye.

(Osho ngeyi ya thiki ku Emaus nomuidhimbiki a hala okutopoka na yo. Ihe ayehe yaali ye mu indile a hungile na yo)

2, 3. Omuwa ila, u hungile putse, ongulohi ye ya netango li li pokuningina.

P. Schulte.

OMAFANO OMAKUMITHI.

Muuyuni omu na omafano gi ili nogi ili, ihe mugo omu na gamwe gago omakumithi. Ongulohi yimwe otwa talithwa omafano omakumithi mongerki yomEngela komusamane E. Hynonen.

Tango otwa tala efano lyongulu moka Omukulili a valelwa mo, notwa tala wo okuti kwa Betlehem moka aasita ya langlele iimuna yawo uusiku mbwiyaka Kristus a valwa. Omuyengeli gwOmuwa u uuvithile tango evalo lyOmukulili mokuti nkwiya, sho a lombwele aasita a ti: "Mwa valelwa Omukulili moshilando sha David, oye tuu nguka Kristus Omuwa". Luk. 2:11.

Otwa mono ishewe omakulukuma gosinagoga yomu Kapernauma moka Omukulili a longo aantu. Otwa tala efuta lya Genesaret mpoka Jesus okwa aaludha aavu oyendji. Mar. 6:53.

Otwa tala ishewe omafano ngoka ge etele ndje uumbanda uunene, oshoka onda tala nkene Omuwa gwandje ta kondjele ndje moshikunino sha Getsemene ndi hupithwe meso nomepangelo lya Satana. Luk. 22:39-46.

Otwa tala wo nkene Jesus ta thikama mongulu yepangulo maandja Pilatus. Luk. 23:3-7. omolwa ndje. Onda tala nkene Omuwa Jesus ta humbata omushigakano, ihe mondjila okwa vulwa. Tala Omuyapuki nkene ta dhengwa noongola. Omolwa lye ano? Omolwandje.

Otwa tala Jesus omukeenoondjo ta hulwa eta langekwa ongali, opo ihe aalumentu aakanohenda taa kutha oohamara dhawo, noondungo dhawo etaa alele Jesus komushigakano, pamwe na ye aakolokoshi yaali. Luk. 23:33-34.

Tala omishigakano dhi li ndatu tadhi thikama koshikulundundu sha Golgata kuumbangalantu wa Jerusalem. Owe mu dhimbulula tuu ngoka e ku sile? Ngame onda kwatwa kehaluko enene, molwasho omukeenandjo ta hepekwa omolwoondjo dhandje, ihe kombinga nda kwatwa kenyanu, oshoka ombinzi ya Jesus tayi yogo po oondjo dhandje, opo ndi mone omwenyo gwaaluhe mu Kristus amuke.

Manga tatu tala Jesus sho endjelela momushigakano, aakadhona yomokagumbo oyi imbi ondjimbo ndjoka ya holola eso lyOmukulili, ndjoka tayi ti: "Wa li ko, Omuwa sho a alelwa".

Otwa tala nkene ta langekwa mombila, nonkene wo mombila yi li owala.

Okwa yi peni mbela? Ombimbili otayi yamukula mbala. Tala Mark. 16:4-7; Otwa tala wo oshipangelo oshipe sha tu ngwa kOndundu yoomono yi li kuuzilo wa Jerusalem. Twa tala wo ongulu yetumo lya Soomi yi li mu Jerusalem. Kalunga na hambelelwe molwohole ye. Joh. 3:16.

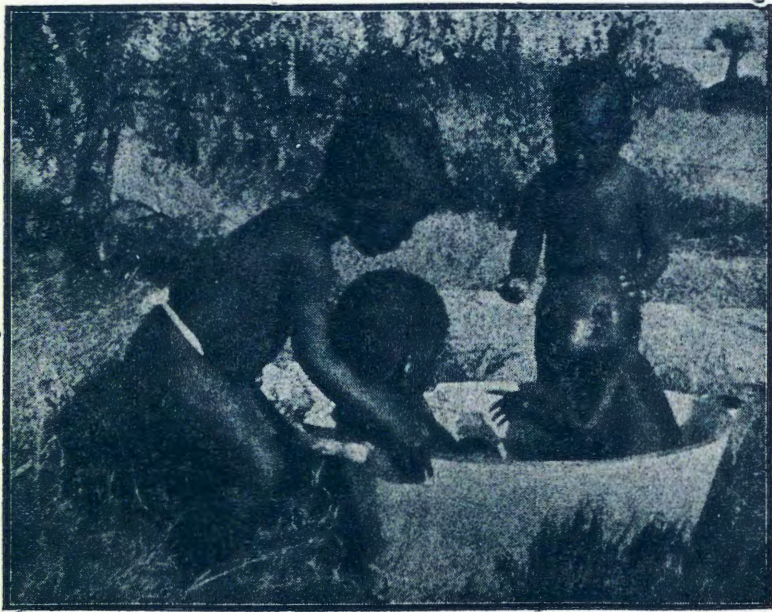
Ano kOndundu yoomono hoka a londo sho tayi megulu, osho wo ta galukile ko esiku lye ngele lya thikana. Tala moramata yomuprofeti Sakaria 14:4.

Kundweni aakritse ooyakwetu noohapu dha Kristus Jesus, nguka a li ko, noku li ko, note ya. Ehol. 22:12.; Mat. 16:22.; 2 Kor. 5:10.

Titus Andreas Ngula.



OSHIKOLOLO SHOMEGUMBO



Miifo oyindji twa lesa mo iinyolwa ya Rauha Votpto tayi popi eputudho lyaanona.

Ngashingeyi tu na natango iinyolwa yimwe mbyoka tayi hulitha manga omapukululo ngaka.

OMAKAMBA.

Omumwoye a monika omuvuliki e holike ku ayehe nowe mu nyanyukilwa shili. Ihe esiku limwe a lunduluka nayi. Okwa udha omakamba, ta ningi omwenyo omuwina-yi, noshaa shoka we shi mu lombwele, oye te shi yamukula no-kuigidha: "Awe, inaandi shi hala." Shika tashi ningwa omunona nge a gwanitha oomvula 3 nenge 4. Elu nduluko lya tya ngaka tali monika ishewe omunona nge ta ningi omugundjuka, poomvula 14-16. Ethembo ndyoka tali pula eidhidhimiko lyomukuluntu. Olwindji omunona mwe-ne a tseya oye omutsini te etele aakuluntu uupyakadhi owindji. Ote shi sile oluhodhi ihe kee shi okupangela. Omukuluntu omunandunge ita tameke okudhenga omunona noku mu yematela, awe, ota kambadhala oku mu kwatha, omunona a konde nawa ethimbo ndyoka edhigu. Shika tashi pula eidhidhimiko enene nohole yi noondunge. Omukuluntu a gwana okutseya, konyala kehe omunona ta mono ethimbo lya tya ngaka lyoomwedhi dhimwe nenge lyoomvula dhimwe. Nge dha piti, omunona ta ningi ishewe omuvuliki nomunyanyukwi.

IINAKUGWANITHWA.

Omunona kehe e niinakugwanithwa ye. Oye e niilonga mbyoka e noku yi longa. Otayi mu humitha komeho. Ihe aanona yamwe taa tala iilonga oyo oshinima oshidhigu shi n okulongwa ashike kethiminiko lya-

kuluntu. Haayehe ye li ngeyi. Onawa omunona ngele a dhiladhila: "Yaloo, yaloo, na ngame wo nda ziminwa nokuli okulonga pamwe naakuluntu." Ngele omunona a dhimbulula enyan-yu lyoshilonga, ngele a mono ondji-gilile yokuyakula nenyanyu, okwi imonene eliko enene tali ke mu kwatha oomvula dhokomeho. Onawa ngele omunona ti ilongo wo nkene kehe oshilonga sha gwana okulongwa nawa nuudhiginini. Omuntu ngoka ta longele iimaliwa ayike, kee na mpoka ta mono elago. Ihe ngoka ta longo nawa ngashika ta vulu, oye omunelago.

EHALO LYA KALUNGA.

Ngele twa hala egumbo lyetu li mone enyan-yu, otse yene tu nokulalakanena okunyanyudha ooyakwetu. Ngele tatu lalakanene ehala lyetu yene li gwanithwe, otapu holoka oombudhi noontamanana. Ihe ngele tatu kongo ehala lya Kalunga, otatu mono elago.

Ohatu longele Kalunga mongerki ihe tatu mu longele wo momagumbo getu. Ngele tatu longo iilonga yetu nenyanyu, ngele tatu putudha aanona nonge tatu yakulathana nohole, otatu mu longele. Omunelago ngoka ta vulu okutya: "Meme oye omugalikani gwa shili."

ITAALA OMUWA JESUS E TO HUPITHWA, NGOYE MWE-NF NEGUMBO LYOYE ALIHE

Ethaneko lyombila ngashika oombila dha li dha kala ko pethimbo lya Jesus mu Palestina.

With acknowledgments to African Features.

NGE OUDJUUHOMBO TAU JEPUA.

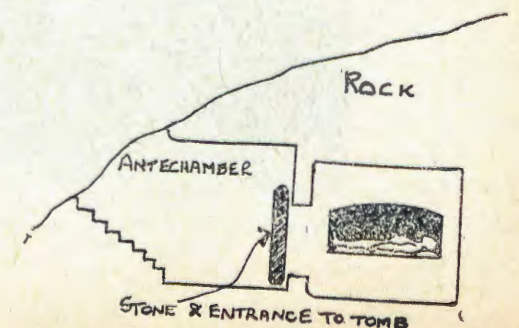
Mombibeli otamu tiua: "Keshe oshilongo nenge tashi lituile ondu-bo mushovene, otashi hanauka po ndele keshe omukunda ile eumbo li nondubo mu lovene, itali kala po", Mat. 12:25.

Eumbo paushili olavavali, nohombu kai fi jomuñu umue ndele ojavavali, omutitatu oudijo mujo. Oue shi koneka tuu? Onje vavali omua ninga omuñu umue mehombolo lijapuki, Mat. 19:6. Omu udite tuu oukumue ou mehombolo? Oua hafa tuu omolu omukulukadi uoje? Ove jo ou na tuu ehafo omolu o-mulumeñu uoje? Nenge ihamu hafelafana, opu na enjonauko noudu mohombo jeni. Ngaashi olutu hali vele, osho jo oukumuemuenjo oupahombo hau dulu okuvela. Omue shi dimbulukua? Nenge inapu holoka oudu uasha uokuhadulikafana, uoluodi, ueñamanama, oukuhaudafana, uetukauko momadiladilo maua, uehengafano, uokuhafimanekafana, uokulihola ove muene auke, uoshinjenu shidjuu nosho tuu uoinima ikuaou ja finda kouii ngaashi oukupa-pata ou tau hutulifa oludalo nosho tuu, nenge inamu ljata mo mu shimue sha ei, nena Kalunga na hambeleleue. Nenge omua mona po enjonauko mohombo jeni, li uapalekeni diva koshipala sha Kalunga.

Kaleka ohombo joje meveluko nomoukolele. Opu na okukala elineekelafano nohole. Elineekelafano lihe na ohole ola fa okumangela kumue oinima ihe fi joludi limue. Osho jo ohole ihe na elineekelafano kai na oshilonga.

Oudjuuhombo netekepo leumbo ei otai jepua hano ngahelipi? Ninga ngaha: Indileni pamue. Shileni ondjoko jeni oshita. Hokolelafaneni omanjono. Endeeleni okulipa ombili nge mua ningafana. Kaleni mu na omadiladilo maua. Vjuleni eshi sha endama. Lesheni Eendjovo da Kalunga pamue. Mu Kristus Jesus omo amuke hatu mono ouino joñumba ei tai kulu efiku keshe nondjele.

Kornelius T. Ndjoba.



OUNJUNI TAU TONGO SHIKE

EVANGELI TALI TANDAVELE

Mefimbo letu oradio tai jakula jo mokutana evangeli. MuKina omu na ovañu ve fike peemiljona 600 ndele vamuevamue aveke fijo onena va uda odaka injenje jevangeli. Nde ovakriste ava tava hepekua nokuli kovakommunisme tava pangele oshilongo.

Ndele paife etumo lokutuma o-maudifo evangeli mu radio ola dikua popepi nongaba ja Kina opo ovakina va udifilue elaka lehupifo. Ngashi tu shi shi, medu eli linene letu, Afrika, omu na jo omatumo atjangaha nande eendaka dao itadi fiki natango apeshe. Oshinima shimue tashi imbi oshilonga eshi shiua osho kutja, omalaka taa popiua koiana omahapu neñgono unene.

EJAKULAFANO LEENGERKI

Mu Japan, oshilongo shinene-nene mEfuta la muena osha hangikua koshiponga shoshikungulu sha dipaa ovañu omajuvi atano nomambo mahapuhapu a hanauka po noshonosho. Moluhepo luovajapan ava eengerki di li poushiinda ngashi mu Birma, Australia, Malai, Pakistan, Geylon, ode va kuafa nde ve va tumina oimaliua 2.500 omoluejakulafano. Taleni, ovakriste mokujakula kuavo moluohole ja Kristus, hava dimbua noupu eengaba doilongo javo. Ou ta jakula oje omunene!

ETUMO LOVASUOMI

Omoluomapulo mahapu ohatu eendulula natango pahupi eeñele omo ovatumua ovasuomi tava longo mo:

1. Oñele inene i dule dikua ojo OUAMBO. Ojo jo jotete jEhanganotumo la Suomi la hovela mujo. Mu Kavango omu na jo ovasuomi, ndelene meeñele edi mbali ngashi moushimba jo oshilongashetumo tashi longua unene medina lOngerki jOua-mbokavango.

2 Mu Tanganyika, mOuninginino ua Afrika, omu na ovatumua ovasuomi ve dule omulongo. Tava longo meeñele mbali ile tu tje moilongo ivali, mOumbangalañu nomu Konde.

3. Mu Asia lokokule, Ku Formosa nomu Hongkong. Oñele ipelela ojo Pakistan, omo ovatumua tava i neudo.

4. Mu Israel (ile Palestina) mokati kovajuda omu na jo ovatumua ovasuomi vamue.

5. Mu Japan omu na jo ovatumua ovasuomi.

OVAKUAPATA VA MARTIN LUTHER

Mounjuni ua Luther (a fja 1546) ongerki jopakotolika oja shilika ehombolo lomufitaongalo (ngashi tai ningi fijo nena). Ndelene Luther, paujelele ou e u mona mOmbibeli, okue i kondjifa moshinima eshi ndele a hombola Katharina von Bora. Paife epata laje olinene, pamuvalu ovakuapata vaje ve fike po 1834.

OKULESHA KUOVAÑU

Mounjuni aushe omu na ovañu vakula ve fike peemiljoni 700 ovo itava shiiva okulesha nokushanga. Mu Afrika ovo ve li po eemiljoni 100. Mu Ruslanda ovañu eemiljoni omulongo itava shiiva natango eendada dokulesha nokushanga.

Eshi hatu tale ovadaleluamo mu Union nena 35 kefele limue (35 %) keshe otava shiiva okulesha, omuvalu uavo eemiljoni ñatu.

Ongerki oñguaevangeli ohai lalakanene okulonga omuñu keshe a leshe naua opo je muene a shive okulesha Eendjovo da Kalunga. Ndelene, omupja munene, vahapu ovo hava shiiva okulesha ova dimbua okulesha Ombibeli. Natu lesheni noupenda Eendjovo da Kalunga!

OSHIPONGA MOMINA

Oshiponga shinene sha hanga omina imue mu Uniona eshi eti 21 la Januarie edu la kuluka ombadilila novañu vahapu ova fufilua mo oshita, ova fitikilua ovanamuenjo. Ave-she kumue ove li 435, ovadaleluamo novatilianene. Nande ova feua mo neñgono, inava hangika. Ova fjaala mokule medu mui.

Omoluefjo lavo omalongelokalunga momalaka mahapu okua ningua omo oluhodi laaveshe la hololua koshipala sha Kalunga.

Fijo nena oshiponga shi fike apa inashi ningua medu eli, nande mu Uniona nomu Suidwes omu na eemina dihapu dilili nodilili.

"OHALFAKOLONA" TAI KANA

Ngashi tua hokolola shito epangelo tali ka lundulula edina loimaliua tai longifua paife nokutja poñele joponda nojofilinga tapu ka kala oranda nosenti (lesha natango oshipopiua eshi moshifo sha Januarie nedina "Olupe lupe luoimaliua"). Omafo noimaliua ikukutu jetu tai ka kala melongifo manga pamue noimaliua ipe ojo tai holoka momudo tau

uja, 1961. Ndelene oshinima shimue tashi lunduluka, ohalfakolona (2/6), itai longifua vali komesho, tashi ti otai ka kana filu. Momudo uoneudo oi na nga ondilo natango.

OMADILADILO OVAKINA.

Ovakina tava shiiva mounjuni aushe komadiladilo avo e neendunge. Ove na omajeletumbulo makulu mahapu.

Limue muo tali ti: "Okuhongua nokulihonga mokuhadiladila itaku kuafa. Okudiladila mokuhahongua otaku eta oshiponga". Uuditeko tuu eendunge edi?

Limue vali tali ti: "Kapenambudi nande itandi shiivika kovañu, ndelene osho tashi etele nge oñgenda kutja inandi uana ndi shiivike".

OILONGA HATU I PUMBUA JO.

Mongerki jovazulu, mu Uniona, omua tulua ovatumua vavali va kale ve na oilonga ei aike: umue ta pukulula omaongalo mokulifa emona noimaliua oshisho eongalo keshe li shiive okulihumbata mokufuta eendjabi noshotuu, ndele omukua oshilonga shaje osho okukuafa moivike-mbibeli mokukonga ovapaani novashunimonima, tashi ti okupashula nokupendula omienjo keitavelo.

Ohatu pula ne: onaini ongerki jetu tai limonene ovakuafi vatjangaha shashi omapukululo moimima tuu ojo a fa taa pumbiua shili?

OSHIPONGA SHA TB.

Pefimbo lopaipe unene mokati kovadaleluamo ngashi movauambo jo epunga, TB, oudu uoñulo otai hepifa ovañu, ha vamuevamue aveke, ndelene oshiuana ashishe shi li moshiponga osho ngenge itashi pashuka kujele.

Ovahakuli otava ti, kutja oudu ou tuu tau shiiva okuhakulua naanaa ngenge tau dimbulukiua kujele nde nge tau hakulua kujele.

Omadidiliko otete muo oo: okuutama na okukanifa ehalo lokulja na okungonopala na okudja oshiñui neñgono oufiku na okukolola unene kanini. Omadidiliko aa ngenge taa holoka nena onaua ngenge to i komuhakuli.

Oshiponga eshi oshi shi kujepua noupu kanini omuñu eshi ta pashuka noku shi kondjifa KUJELE.

Sly.

AALESHI TAA NYOLA

ESHIVIFO KOVAKUETU

Ovamati vakuetu ava mua li ku Oranjemund momudo 1956 nomua li mua itavela epulo lange eshi kual handi pula ekuafu kombinga jetungo longulu joskola kOngenga: Ombili eshi mboli nda kanifa o-madina eni. Kuafei nge mu shivifile nge apa mu li paife, opo tu popjeni naua manga, osheshi otashi pumbua tu kundafaneni mboli natango moshinima eshi. Lesha Heb.13:20,21

Omukueni,

Adolf Hangula.

ENYANYU ENENE.

Esiku eti 8 Maart 1960. otse otwa mono aayenda yetu ya zi ku Swakopmund, omuhongi Marttunen, nomusitagongalo Jason Haufiku. Oyo ye tu etele omvula ombwanawa, omvula yomwenyo, oohapu dhOmuwa gwetu Jesus Kristus. Oyo sho ye tu ningile ohungi, ongerki oya li yu udha shili noonkondo aawambo. Omusitagongalo Jason Haufiku okwe tu leshele oohapu dhi li mu Mark. 10: 46. Okwe tu fatululile nkene omuntu e nokukala muukriste. Aamati yolwiimbo oya imbi omaimbilo omawanawa shili. Omuhongi Marttunen okwe tu ulukile okino ombwanawa yoku Soomi nkene yi li. Otwa mono wo aawambo yamwe tu ya shi, ngaashi omusamane Leonard Auala, nomusamane Natanael Kapofi, negumbo lye, noyendji ishewe yalwe. Okino sho ya pu, omuhongi Marttunen okwe tu leshele oohapu ndhika. Luk. 19:1-10. Otwa imbi eimbilo 138. Omuevangeliste gwetu Stefanus okwa ningi egalikano.

Komima yegalikano omuhongi Marttunen okwe tu popitha ishewe a ti: "Aawambo yomOmaruru one aanelago, oshoka omu na ongerki yeni, moka kamu gongalwa koohapu dhomwenyo."

Na tse wo mpaka otatu pandula Tate Kalunga sho he tu tumine aavuthi yoohapu dhehupitho sigo onena. Tu galikaneni ano, evangeli li taandele muuyuni auhe, ngaashi Omuwa Jesus ta ti: "Indeni ano ka ningeni aantu ayehe aalongwa yandje noku ya shashela medhina lya He nolyOmumwana, nolyOmbepo Ondjapuki, noku ya longa okudhiginina ayihe mbika nde yi mu lombwela. Ihe tala ongame ndi li pamwe na ne sigo ehulilo lyuuyuni" Mat. 28:19-20.

Aamati noya laleke aayenda yetu neimbilo ndika tali ti:

Thimbo lyelalekathano lye ya..

Oshigongi, nenge ohungi yetu noya hulu ihe.

F. J. Shipanga,
Omaruru.

"OMUMATI A KANA."

Omusamane Paul Schulte uoku Duitsland ota shangele omumati Leonbard ou a dja mOukuanjama a ja koilongo jokoumbangalañu.

Ino ninga "omumati a kana"! No nande oso ua ninga, opo ningulula, ngashi uinja a ningile. Esi kual e liuditile oukuanaluhepo -oje nande ota li esi hasi liua koingulu no ta djala esi hasi djalelua kohambo, kutja oinjanju -okua hovele okulidimbulukua, nokulidilulula nokulialuluka nde ta ti: "TATE, onda hala ku TATE, ohai lisuna KOMUDALI UANGE. Osesi oko e li natango, ina fja. Iha fi nokuli. Oku li po, nokuli, ha teelee nge; HE JOMAPONGO, INA JOMAUILANDJILA, Omukombelesi, Omunamutimañgenda, iha kofa, iha fi ounje, ha lungama no ha handuluka diva, ina hala efjo lomunamatimba, je a hala, omunamatimba e liululuke, a ka mone omuenjo. Onda hala okulisuna keemadi da Jesus, ou nda saselua muje, je a situlukife omupja uange, ndi ninge omunelao mekolo leameno laje."

Oso u ninga, oso u tja, Leonard, nde to ke si ningilua! Onde si kufa peni? Ha mokukala kuange muene hamba?! "Hanga nda njona, nda kaul' onjanga." Na ame hanga nda li nda kana. Na ame onda li osondolo jongaho. Jesus okua alulila nge mETUMO laje. Ndele ñgi na okudja po vali pu je.

ONJOFI JA DIMA

Omusamane E. J. Pentti ou a hulifa ouenda uaje efimbo lihupi eshi la pita ohatu mu dimbulukua natango.

Oje onjofi ja jela ja vadima, ja jetele ja vadimina no ja minikila nomOuambo jetu no pamue pe lill. Eeñe dajo da eta eehandje apeshe. Oje a longa noudiinini koshipala sha Kalunga ina fa nge. Heno edina laje tali kala alushe la tua.

Omukulukadi noludalo laje hatu li halele ejambeko la Kalunga mokukalamuenjo kuavo.

Leonard Michael

TU NA TUU EMONAFANO

Omulongi uange omuholike itandi dudu ndi kale inandi tja sha kombinga jaje. Oje omutumua E.J. Pentti. Oje okua longa nge noudinini mOseminari. Oje okua li omudinini nomunambili osho jo omukulukadi uaje. Kalunga na kuafe omukulukadi nounona moufije uavo.

Ame omulongua umue uomutumua ou ndi li mombete moluongundi uomukifi uange. Heeno ondi na elinekelo eli Kalunga ote ke tu pendulila omulongi umue omdinini nomunambili a kuafe oshiuana shetu ngashi Pentti.

Ohatu ka shakaneni mu Jerusalem jopombada.

Immanuel P. Shaamena.

NDA KANITHA.

Okalumetana okaluudhe, ka gwana okuhila etemba. Ke na uuyaja moshawo, ka tetua kondungu yokutsi komakandelo, ke nolukombo. Oka kana pehulilo ljomumvo 1958. Ngoka we yi mono tseyithila ndje.

Benjamin Andreas,
Oshali, Olukonda.



OKULIKOLA KWA SHILI.

Omuwa gwetu Jesus Kristus okwa ti: "Inamu ilikolela omaliko kombanda yeve moka hali yonwa po koothithi nokooshushi naafuthi haye li fulu mo nohaye li yaka po." Mat: 6: 19.

Unene tse aagundjuka twa fa twa dhimbwa oohapu ndhika, sho twa ningi aapika yeliko noitatu hala okutula Kalunga. Omumati ina hala okutsa oongolo, aniwa ombulukweya ye otayi yonuka a fa a dhimbwa oohapu dhi li momuuvithi tadhi ti: "Omuntu oti ilikolele mo shike mokuipya-kidhila kwe?"

Eeno Kalunga ina tonda uuyamba, oshoka oye a yambeke kuku Abraham. Ihe oye te tu londodha eliko lyaa ninge Kalunga ketu. Dhimbulukwa omushiti gwoye momasiku guugundjuka woye: Omukwetu omugundjuka, kala u shi shi kutja ethimbo lyuugundjuka olyo ethimbo lyokuhambelela Kalunga kali shi lyokugwanitha uuhalu nokulikola iikolokolo, kaayi na oshilonga.

Johannes Endjala Kamati.
Oranjemund

OSHIPONGA SHOMULILO.

MUukuambi omulilo ogwa fike po egumbo lyomusamane Vilho Ashela alihe thilu eti 12 lya Septembe 1959. Niikuulya okandunda kamwe ka kuthwa mo kaakiintu yaali Maria na Laina manga tse aalumentu twa tila shili.

Ohaluka esiku eti 1 Januari 1960 twa dhimbutula ishewe omulito. Omulilo gwa fike mo ombinga yimwe. Twa tondoka no-twa kutha ombanza twe gu dhimi. Omwa adhika omukulupe kee na nomeho. Kalunga oye egameno.

Kain ta ti: Oondjo dhandje oonene kandi yulu oku dhi humbata. 1Mos. 4: 13. Ha Kain awike ta ti: ngeyi, ihe tu shi ninge otse na ngoye.

Petrus Eelu.