

Oshituthi shokudhimbukwa etameko lyoshilonga shEhanganotumo lya Soomi kOkavango omumvo 1926.

OMAKUNDITHO GA TUMINWA KOSHITUTHI SHOMIMVO 100 DHEHAGANOTUMO LYA SOOMI.

Omumwanangerki yomOwambokavango tayi halele Ehanganotumo lya yinangerki eyambeko lyoshituthi shomimvo 100.

Kalunga na hambelelwe sho a humbata nawa nokwa koleke nokwa yambeke Ehanganotumo lya Memengerki momimvo 100.

Kalunga na hambelelwe wo sho mpo pu thike okuindjipala kwomimvo dha Memehanganotumo opo pu thike wo okutana kwoonkondo dhe dhokuputudha oyana.

Nomakundo gesimaneko nenyanyu lyeligolo.

ONGERKI ONKWAEVANGELI PA LUTHER YOMOWAMBO-KAVANGO.



*EHANGANOTUMO LYA SOOMI,
HELSINKI.*

Nokuhambelela Kalunga otatu hokolola kutya, mekuno lyoohapu omwa zi muka mOwambo, moshimpungu shotango shEhanganotumo lya Soomi, eteyo lyo oopala. Olugodhi lwokukondjitha uupagani nuhasha nokwaavulika olu li po natango oludhigu notalu pula ayehe mboka ye li moshilonga shetumo eitaalo nohoole neidhidhimiko. Otatu tsikile oshilonga shetu nokuinekela omauuvaneko ga kolelela ga Kalunga nogOmukulili gwetu nokuinekela wo oonkondo dha Mbepo Muyapuki hadhi longo iikumitha.

Otatu kundile po Ehanganotumo moshituthi shalyo.

Aatumwa yokOwambo.

(Elundululo.)



Omuwa, esimano lyaa ninge lyetu, aawe, nali ninge olyedhina lyoye.

Eps. 115:1.

KALUNGA TI ITHANA AATUMWA.

1 Mose 12:1-4.

Elaka lya Kalunga olya aadha omusamane Abram moshilongo sha Haran. Omuwa okwe mu lombwele eta ti: "Tembuka moshilongo shaandjeni nomaakweni nomegumbo lya ho, ngu ka ye ko kevi ndyoka tandi li ku ulukile."

Abram nokwa tembuka mo, Omuwa ngashi kwe mu lombwele. Oye ina tila uudhigu wondjila. Oye ina tila iigwana mbyoka kwa li kee yi shi. Miinima ayihe oye okwi inekele owala omauuvaneko ga Kalunga noonkondo dhe.

Abram nokwa ningi ihe Abraham, he yooitaali ayehe. Eitaalo lye nevuliko lye olye mu etele eyambeko olindji. Nokuli omazimo agehe gokombanda yevi oga yambekwa omolwe.

Elaka lya Kalunga olya aadha wo aakriste yomoshilongo shaasoomi. Omuwa okwe ya lombwele eta ti: "Tembukeni moshilongo shaandjeni nomaakweni nomomagumbo gooho, mu ye komavi gaapagani, mu ke ya uuvithile evangeli."

Oyo noya tembuka mo, ngashi Omuwa e ya lombwele. Oyo inaa tila uudhigu wondjila. Oyo inaa tila ondjahi yaapagani nefupa lyawo. Oyo inaa tila uukukutu woshilonga shika ye shi pewa kOmuwa. Miinima ayihe oyo oyi inekele owala omauuvaneko ga Kalunga noonkondo dhe.

Aatumwa mboka noya dhikile Kalunga egongalo komavi gaapagani. Oya aaludha aavu noya kwatha oohepele noya longo aantu oohapu dha Kalunga. Aantu oyendji oya yambekwa keyakulo lyawo lyomevuliko.

Elaka lya Kalunga ngele tali ku aadha wo, oto mu yamukula ngini? Oye ngele te ku ithana, u ze nkoka wi iigilila ko, note ku tumine nkoka inoo iigilila ko, oto yi ko tuu nenge to tindi? Oshini po shi ku vulile oshikwawo: Okuvulika kehalo lya Kalunga nenge okutindila maandjeni?

Natango tuu Kalunga a pumbwa aatumwa, e ya tume. Okwe ya pumbwa wo mokati kaawambo nokaa-kavango. Pamwe ongoye tuu gumwe gwomuyo.

Dhimbukwa: Mondjila ya Kalunga omu neyambeko. Omauuvaneko gOmuwa oga kolelela note ge ku gwanithile wo, shaa wi itaala. Oonkondo dhe otadhi ku piitha momaudhigu agehe. shaa to ende mevuliko.

Shaa ngoka ti igandja kuye, Kalunga ote mu ningi eyambako e-nene koyendjiyendji.

Elias J. Pentti.

OMUAMBO TA PANDULA ETUMO LA SUOMI.



OMUKUETU

OOMVULA ETHELE LIMWE.

Kalunga okwe tu thikithile ishe-we momumvo omupe. Ogwo omumvo 1959 okuza kokuvalwa kwOmukulili gwetu Jesus Kristus. Ogu nomasiku 365 gu uudha esilohenda neyambeko.

Kombinga yetumo lyetu omumvo nguka 1959 ogwo omumvo gwenyanyu lyoshituthi. Ehanganotumo lya Soomi otali gwanitha oomvula 100 momwedhi tuu nguka gwa Januarie. Ano otashi ti, olya dhikwa eti 19 lya Januarie 1859, nolya longo ngashingeyi oomvula ethele limwe.

Palwe moshifo shika otapu hokololwa nawa iituthi mbyoka tayi ningwa ku Soomi ko kwene. Otamu vulu okulesha wo moshifo shetu omakunditho ngoka ga tuminwa ko kaatumwa yokOwambo nongerki yetu yokOwambokavango. Na nkuka kOwambo okwa longekidhwa iituthi, oyindji nokuli. Shotango otu shi na 18 - 19 lya Januarie, oshitiyali 9 lya Julie noshititatu oshinene eti 16 lya Augustus, Kalunga ngele te shi hala.

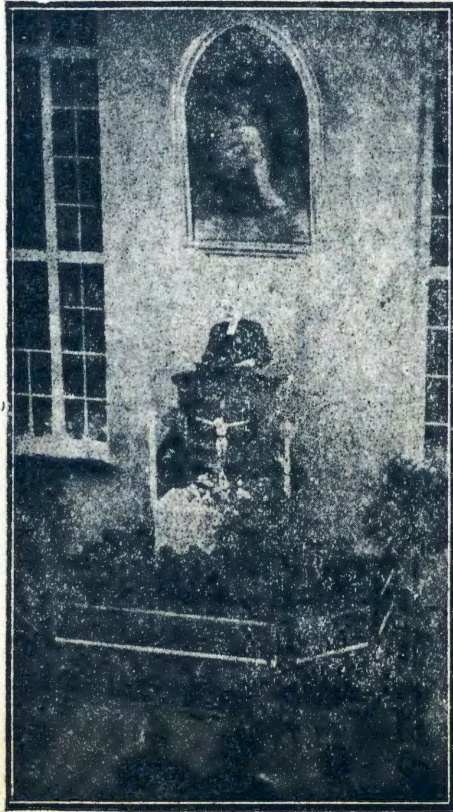
Eeno, omuwambo kehe okwa gwana shili okunyanyukwa nokuhambelela Kalunga omolwehangano lya Soomi, oshoka olyo lya kala oshilongitho sha Kalunga, oye sho kwa hala okupa aawambo uyelele wevangeli lyehupitho. Ngashi ohoole tayi manga kumwe yina nomumwana, osho wo yinangerki yoku Soomi nomumwanangerki yokOwambokavango odha mangwa kumwe kohoole yoomvula odhindjindhindi.

Ihe otu nokudhimbulukwa kutya, aakriste aasoomi inaa longa kOwambokavango akuke, aawe, oya ulukilwa ku Kalunga iilongo yilwe wo mbyoka ya pumbwa oohapu dhehupitho. Aatumwa yEhanganotumo lya Soomi otaa longo ngashingeyi komavi gatano, notaku dhiladhilwa omatameko omape koombinga oonkwawo wo. Aatumwa ya Kalunga itaa vulu okukala omutumba peha limwe ethimbo ele; oye nokundelela, ya thikithe oonkundana ombwanawa dhehupitho koombinga adhihe, manga ehulilo lyomathimbo inaali ya.

Oshituthi shika shoovula ethele limwe otashi dhimbulukitha wo aakriste aawambo kutya, nayo wo oya ithanenwa koshilonga shetumo. Aapagani oyendji oye li natango mokati ketu, noku noshigwana shimwe shaapagani shi li muushinda wetu. Oyo aakwankala. Oyo inaa uuva natango oohapu dha Kalunga melaka

Onda hala nokuhalelela, Omuene Kalunga a nangeke noupuna oshilonga eshi shetumo la Suomi mOuambo. Omuene Kalunga na pe alushe ovasuomi ava eefigono oku tu kondjela, osheshi vo va etela edu eli lOuambo ependuko. Omilaulu da li mo, ove di ta mo. Hano Omuene na kuafe ovasuomi ava. Otu shishi, enangeko noupuna medu lOuambo otali etua kuvo.

Absalom J. Nangonya, Kalkfeld.



Poaltari ndjika yongerka yEhanganotumo lya Soomi pwa lalekelwa aatumwa oyendji.

lyawo. Nayo wo oye noku dhi uuva dhi ya etele ehupitho, oshoka nayo wo oya kulilwa nombinzi ya Jesus Kristus.

Ongalo yesiku eti 18 lya Januarie oyo okampito okashona kokulongekidha oshilonga shetumo mokati kaakwankala yokuuzilo, oshoka ongalo ndjoka otayi ka longithwa ku Kongo, kuuzilo wUukwanyama, okutungila ko ongulu ompe tayi ka ninga komeho oshipangelo shaayehe mboka ye li komikunda ndhoka.

Tu gandjeni nenyanyu lyoshituthi, omagano ngoka ga holole shili epandulo omolwuwunawa mboka Kalunga e u tu ningile, sho kwe tu tumine oohapu dhehupitho.

Tu igandjeni tse yene ku Kalunga, tu kale aatumwa ye naahokololi ye mokati kaantu ayehe.

OLUFO LWOYE OTALU YA WO...

Omuukwetu, ethimbo lyetu lyokukala kombanda yevi olyo efupi shili. Omvula kehe tayi hulu, etango kehe tali yi mo, edhengo kehe lyotundi otali ningi ethimbo lyetu efupilela notali tu endelelitha ongefundja, li tu hilile muukwaluhe noku Kalunga.

Nena oto endagula ongula oshinkoti shompadhi otashi monika, ihe owa za po ngaa. Oto yi peni mbela? Omuukwaluhe! Nena natango oto longo niikaha yoye mwene, to mono ko nomeho goye, to dhiladhila natango nuuluyi woye, to kongo natango ondunge, u tale sho to ka longa nenge to ka ninga komeho. Ongula ayihe ya mwena, kayi po. Owa tula omaako kumwe, omeho ga thithikile okutala ayihe mbyo. Owa yi peni? Omuukwaluhe.

Tala u tale. Olufu lwoye otalu ya shili, na mbalambala oto yi wo muukwaluhe. Ipula u tale ngoye mwene: "Ondi ilongekidha tuu shili okuya muukwaluhe?" Gandja komaiuvo goye ethimbo oku ku yamukula, ngu ga pulakene nawa.

"Onena tuu ndjika nge tamu uuvu ewi lye, inamu kukutika oomwenyo dheni." Heb.3:15.

Dhiladhila u tale kiinima iyali: egulu noheli, mu mbika iyali siku limwe otamu ka monika eha lyoye. Hogolola nena pu mbika iyali, oshini po tashi ka ninga eha lyoye, omutumba gwoye. Ongula kape na ethimbo.

Inda kOmuwa Jesus, Omukulili gwoye, manga pe na ethimbo. Itaala Omuwa gwoye oye Omukulili gwoye. Mu tala Omuhupithi nOmukulili gwoye, oshoka okwe shi ku longele. Lesha Joh.3:16; Joh.3:36. Joh.1:12. Itaala shili iidhigu mbyoka e ku kulile nayo, mbyoka Omuwa Jesus e ku landa nayo. Mu pandula. Oye Kalunga, Omumangululi gwoye.

(Dha tumwa ku Juuso Katangolo.)

ESHI OYE OMUNANGONO ADISHE,

ongwe inandi pumbua sha, osheshi oje oha dulu okupa nge ashishe. Eshi oje Ohamba nOmushiti ueulu no uedu, onge kape na ou ia dulu okukufa nge sha ile okuetela nge oshiponga. Heno ashishe oshi nokuapalela nge nokujakula nge, osheshi onda filua ongenda kOhamba ojo aveshe ve noku-dulika ku jo.

Martin Luther.

O K A A N D J E T U



EYAPULO LYAAEVANGELISTE MENGELA 16. NOV. 1958.

Aaevangelistelongwa mboka ya kala moskola yuuevangeliste okuza komumvo 1956 sigo onuumvo oya yapulilwa oshilonga shuuevangeliste komuwilikingerki Alpo Hukka eti 16 lya November 1958.

Aakwanepangelongerki nomuwilikingerki oye ya mEngela eti 14 lya November 1958 noya konakona aaevangelistelongwa eti 15 lya November, naayehe ya piti omakonakono gepangelongerki noya taambwa ya yapulilwe uuevangeliste. Aaevangeliste ya li po 29 noya topolelwa omagongalo gomongerki yetu. Yamwe yawo taa ka longa kUushimba, ihe taa yakula manga taa tegelele epitikilo lyawo lyokuya kUushimba.

Eyapulo lyawo lya ningwa mongerki yomEngela osondaha 16 lya November. Aaevangeliste ya zi kongulu yomuhongi Hynönen ye li momukweyo ooyali noyalandulwa kaasitagongalo nomuwilikingerki nosho ya thiki omweelo. Ongundu yaaimbi ya thikama yi imbi, naambaka ya pitile komwelo omunene yu uka sigo koaltari nkoka kwa li omuwilikingerki naayakuli ye aakwanepangelongerki 4 nomusitagongalo gwa Ngela nomulongi gwaevangeliste, ayehe ano yaheyali ya li keyambelo.

Omuwilikingerki a lesa Mat. 28:20, eta popi euvaneko enene lya pewa aalongwa ya uvanekelwa kOmuwa gwawo ta kala nayo. Inayu uvanekelwa uwanawa, aawe, inaku tiwa itaa ka adhika kuudhigu, inaku tiwa otaa ka mona uupu, ihe ota kala nayo nge muudhigu nenge mo luhodhi.

Omuwilikingerki a gandja omalufu kaayakuli ye ya leshe oohapu dha Kalunga ndhoka dha popi omakumagidho nokuts'omukumo aayapulwa ya kale mu Kristus, nokwa pula aayapulwa omapulo gatatu moka tamu hololwa okukala kwopambepo nokuenda mu Kristus nokuvulika koohapu dha Kalunga nokudhiginina oshilonga noku shi taamba. Aaevangeliste yuvaneka ya longele Kalunga, e taa hempulula eitaalo lyawo, ya ts' oongolo noya tentekwa omake ya pewa ngeyi oonkondo dhuuevangeliste ya faalele aashitwa ayehe evangeligi.

Ongundu yaaimbi ya kala tayi ya imbile yapewa elago enene sho taa longele Omuwa.

Maapopi mwa li omakumagidho nga:- a) Otwa ithanenwa okugwanitha ehalo lya Kalunga, oshoka osho tuu shoka twe shu uthilwa nokuli, na Kalunga mwene oye ta pendutha ehalo niilonga ohokwe ye yi gwani-the.

b) Otwa pewa euvaneko enene shili sho taku tiwa onyama nombinzi itii thigulula oshilongo sha Kalunga. Euvaneko ndika ewanawa tatu ka pewa omalutu omape go opalela oshilongo sha Kalunga.

c) One omongwa gwevi nuuyelele wuuyuni, tamu ka minikila notamu toyaleke uuyuni.

d) Otatu tegelele oshindji kegongalo lya Ngela. Otatu tegelele omagalikaneno opo Omuwa e tu koleke.

Omulukuntu gwenongelo lyaevaevangeliste a pandula egongalo lyomEngela sho hali galikanene oshilonga shomenongelo nokugalikanena aaevangelistelongwa sigo ya thiki kesiku lyehulitho, nokwa pandula wo mboka ya yakula moompumbwe dhokolutu ngashi mokutsa n. s. t.

Eyapulo ndika olya dhanwa pashituthituthi lya kwata oomwenyo, oshoka ayehe ya mwena, mboo, ongo kapu naantu ya tala ya pulakene sigo omambo ga piti, e tatu halakana ihe, aaevangeliste ya kala po manga.

One aayakuli yongerki noshilyo kehe shongerki otatu mu indile mu taambe ooyakwetu mbaka aape miilonga nomagalikaneno.

Jason Amakutuwa.



mEheke.

Viktoria Paulus a si 6. 1. 57
Sakaria Nepembe a si 20. 3. 57
Johanna Petrus a si 4. 5. 57
Emilia - Ndejapo -, a si 23. 5. 57
Tomas Antindi a si 1. 7. 57
Andreas Abed a si 25. 7. 57
Juuso Hesekeiel a si 4. 8. 57
Paulina Nenima a si 6. 7. 57
Albin Iijambo a si 22. 9. 57
Toini Nangombe a si 30. 9. 57
Tomas Shigueda a si 8. 11. 57
Fredrika Kakuiju a si 22. 11. 57
Matilda Frans a si 29. 11. 57
Mirjam Elias a si 26. 11. 57
Mateus Amadila a si 22. 12. 57

IITUTHI YOHANGO

Eti 18 lya September 1958 olya li esiku lyoshituthi sha Vilho Kakwiyu na Saimi Nepando. Mehokanitho mongerki yokOnayena omusita okua popi oohapu ndhika:

„Otaku kala eitaalo, etegameno, ohoole.” Omukriste e nokuitaala nokutegamena nokukala mohooole ya Jesus.

Aakagumbo mboka ya hiywa oyi imbi mongerki omaimbilo gomahaleloyambeko. Omaimbilo gomolwendendo oyi imbwa melandulathano ewanawa, nomufuko okwe endeleele nawa. Sho ya thiki, aantu ayehe oya gongala momwandi pooha dhegumbo.

Omusamane M. Nashandi okwa popi oohapu dhi li mEhololo tadhi popi eoopalo lyoshilando sha Jerusalem oshipe. Omulongi T. Egumbo okwa popi ohango, nkene yi nesimano, sho hayi yelekwa noshituthi shomogulu.

Oshituthi ashihe osha li sho oopala melandulathano ewanawa. Osho ngaaka oshituthi osha hambelelitha edhina lya Kalunga.

Johanna Auene.

Esiku eti 19 lya September 1958 Samuel Epafra nomupangi Laina Iijambo oya dhana oshituthi shawo mu Elim.

Oshituthi shika nando sha hokanithwa pokati komutenya aahokani yo yene oya kambadhala okuulumina kegumbo, oshoka oya ti: „otwa hala oshituthi shetu shi dhane mbala, manga etango li li ko nokuli.” Ano twa dhiladhila, ya hala wo, Kristus a ninge etango lyawo.

Omusitagongalo Timoteus Andreas a laleke Laina a ti: „Ongoye sho wa kala omudhiginini miilonga yoye yuupangi, Kalunga te ke ku pa wo natango oonkondo okudhiginina nokuyakula nguka wa pewa nena ndjika.”

Ongula yosondaha omusamane S. Iipumbu a tumu oshihauto she, opo shi fale aafuko kOndonga kOntonananga, ano kegongalo lyomumati. Ano nena Laina oku li po ta nyanukilwa ezimo epe e li mono mOndonga.

Teodor Namandje.

Okambo okape ka holoka:
Ombimbeli yandje otandi yi lesa
ngini.

KOwambo -/9, kUushimba -/10

OSHIKOLOLO SHAAGUNDJUKA



(Ghana Information Office)

Omugundjuka omukriste a fa oshungo yomulilo (vuurtoring) mokati kuuyuni. Ngashika uyelele mbuka woshungo yomulilo tau pukulula aaendifuta, osho omukriste ta vulu oku shi ninga muyelele woohapu dha Kalunga.



Ondjila jomukriste.

Omukuetu omuholike, shimue ashike nda hala, ndi ku shivifile, osho ngaha, omukriste n̄umbi ē na okuenda mondjila jaje jopakriste.

- 1) Omukriste e hoole eendjovo da Kalunga neitavelo nomutima aushe.
- 2) Omukriste ha diinine oipango ijapuki ja Kalunga.
- 3) Omukriste ha indile efiku kesheshipala sha Kalunga nomutima ua shili ue lihupipiko.

Paulus Johannes.

OLUENDO LUOMUUJELELE.

Mokukala kuoje akushe lijeleka neendjovo da Kalunga. Efimbo lelikano ino li dimbua. Indila alushe Omuene, e ku pe ouladi, u findane mu aishe. Okukalela oovene vavali itashi dulika. Ookaume vounjuni itava kua fa sha. Mounjuni ou li mo omuenda. Ope na oudjuu okuja moshilongo shomeulu. Okudinua nokushekua kounjuni oshipu shi dule okufimane kua kounjuni ndele meulu to ningi omudinua nomuhandukilua ku tate uomeulu.

Omunjasha omukuetu, efa eendjila dounjuni nomahafelo ao, ndele lijandja kOmuene. Indila alushe: Omuene, pe nge eēngono dokufindana momamakelo, opo ndi ka je mehafo laalushe meulu loje. Omuene, pe nge eendunge domeendjovo doje. Ino dimbua okuilikanena omufita ueongalo leni.

Omunjasha omukueni
Sylvia Kornelius.



ONGERKI YOYE U YI HOOLE TUU.

Ongerki ndjika yetueni u yi shi tuu nawa? Egongalo lyaandjeni u li shi, ihe omagongalo ge li po gangapi mongerki ayihe? Aantu ye thike peni ye li mo? Esiku limwe tatu ka shuna miinima ya tya ngaaka, ihe ngashingeyi natu taleni aasebinari yamwe yokOngandjera nkene ya yamukula sho ya pulwa: Omolwa shike u hoole ongerki yoye.

Omolwashoka omo tu nompito okutsila Kalunga oongolo (ngashi tu noku mu simaneka komeho gashashoka.)

-Ongerki oyo omuleli gwandje gwokuputudhila ndje mu Kristus.

-Omo wo tse atuhe twa hanga-nithwa twa ninga yamwe.

-Ongerki yetu ndi yi hoole oshoka inandi mona uutoye palwe u vule muka nda mono mOngerki ndjika yetu yomOwambokavango.

-Ongerki yetu ndi yi hoole molwashoka omo mu na wo egongalo lyetu. Moka nda shashelwa mo nonda kolekelwa mo. Nonda ningi oshilyo shomu Kristus mekwatathano lyomUulalelo Uuyapuki.

KK.



EIMBILO LONGULA

Ongovela: „Lobet den Herren, alle, die ihn ehren . . .“

1. Tangua, Omuene,
Kongudu inene,
pamek' eendaka, tu ku tumbaleke,
nedina loje tu li fimaneke:
Tangua, Omuene
2. Moloj' Omusiti
opo hatu piti,
Kouua tu uoje fje tua mon' ongula,
noufik' ulaula noufile ua xula:
Tangua, Omuene!
3. Fje tu liuete,
Ove u tu kuete,
ua jambidida omuenjo nolutu,
longif' elaka neke olupandu:
Tangua, Omuene!
4. Ua ta oiponga,
inai njon' oilonga,
ua dim' omundilo, inau xwik' eumbo,
moipo no ue tu umbil' oluumbo:
Tangua, Omuene!
5. Ua ta omulunga,
a nangel' eembunga,
mesijo loje ua ama omumuoje,
nomuengeli a kondja, si tu koje:
Tangua, Omuene!
6. No nena jandja
Kovamuoj' epandja,
va jep' omutondi, vaha je moxuati,
fje tu ha xulile ondjlakati:
Tangua, Omuene!
7. Jandja ehalo
-kohokueuapalo -
fje tu ku sikule pomufindaŋenda,
naapa tua njengua, jandja po oupenda:
Tangua, Omuene!
8. Kelela oita
no momutenj' Omufita,
tu nue momufima uombili ja jela,
tu pa oilonga je ku uapalela:
Tangua, Omuene!
9. Kele' oudano
nounipafimaano,
u he tu hange ng' ovasima venja,
tu kal' oupafi noufiku nomutenja:
Tangua, Omuene!
10. Fiku to uja,
tu tje: Haleluja,
tu je mosinge sovahokui voje,
tu ke ku imbil' ekandanga loje:
Tangua, Omuene!

Elekelafano
lomumuaxo P. Schult

OSHIKOLOLO SHOMEGUMBO

KOKULEPALA KWOMUTI OKO KOKUNENEPALA KWEKOTA.

Oontayi nando dhi nontanto onene, odha yelekathana nuudhigu wekota. Oontayi sho tadhi tana nekota otali tamunuka wo. Ekota ngele tali nopoka manga oontayi tadhi taandele mombanda nena shoka osho oshiponga shi igalala.

Ekota ngele tali tamunuka manga oontayi tadhi ningi iihwinina nena naampoka ope na wo oshiponga. Oonakutala omuti ngoka otaa ti: „Omuti nguka ogwaala mugo gwene.” Ekota noontayi otadhi tegelelwa dhi koke meyelekathano.

Muuyuni ohamu kunwa omalongo gi ili no gi ili nago wo ohaga tegelelwa ga koke meyelekathano. MOWambo inamu kunwa omalongo galwe olyo tuu ndika lyevangeli lyehupitho. Ano ngele tatu tala ombuto ndjika yevangeli otatu ka dhimbulula nkene ya fa naanaa okukoka kwomuti. Tangotango elongo lyevangeli sho lye ya mOWambo inaku uvika no inaku monika mbala aaleshi yoonyolo, ihe ooitaali oyo tuu ya holoka po mbala oyendji. Kashona na kashona pwa holoka ekota oonakulesha yamwe yamwe ayeke. Ihe nando ongeyi oonakulesha ihaa thiki pamwe nooitaali, ooitaali oyo tuu oyendji, oshoka ooitaali oyo oontayi dhelongo. Ihe aawambo otu nokutya otse aanelago sho tu nelongo limwe alike, lyo ishewe olyo elongo lyehupitho lyoomwenyo dhetu. Ihe nando ongeyi, ope na shoka tashi li ekunde shi li molukunde. Osho oshike mbela? Tala omumwameme; ngashi twa ti: okulesha okwo ekota lyelongo. Otashi ti okulesha ngele kwa nopoka nena ooitaali kaye na we eikwatelelo, oshoka ooitaali oyendji kaye shi kulesha. Tala nduno oshipwe shi li mokati ketu, oshoka ngashingeyi tse aawambo otwa mono Ombimbeli ya pumba miigwana yilwe. Otwa mono wo uumbo uupe tau nyanyangidhwa noshifo shOmukwetu wo. Ihe ayihe mbyoka otwe yi tala owala. Aantu yamwe taa ti: Ae, ngame onda landa tuu ndyoka ekulu lyetu. Aantu yamwe ayeke ya landa Ombimbeli. Yamwe taa ti: „Ngame itandi lombwelwa uumbo mboka tau pula owala aantu iimaliwa yawo.” Mba taa ti: „Oshifo oshohapu dhuuyuni.”

Taleni aamwameme, omakandeko agehe ngaka kage shi gomutse yene, aawe, otaga zi komutondadhi okukelela aantu uuyamba wokutseya okulesha. Nenge ope na ngo ta ti: Eeitaalo otali holoka, manga pwa



AANONA NAA TUMWE KOSKOLA!

Onda hala ndi tye kune, aakuluntu yaanona: kamu uvite ko nawalela, shoka oskola tayi ti. Ihe ngame ondi yi uvite nonale, na ngashingeyi huka ndi li, onda kolekwa nawa.

Sho ku naamati yamwe yi ilonga mooskola dhi ili nodhi ifi, oye li po ya mona iiwanawa, ya kwathwa keilongo lyawo.

Onke ano oti ku tsu omukumo. Unene iilongo mbi te tumbula, oyi nondhino nooskola, notayi simaneke iilonga yawo komeho goskola, ngashika Uukwambi sigo kuuninginino.

Tumeni aanona yeni kooskola, ya longwe shili. „Kau shi wetu.” Aanona yiilongo yetueni oyo ye li konima huka, shoka inaa mona ooskola nawa. Ano ethimbo lyomumwoye ino li hepitha mu longitha a mone oondunge. Oskola yetumo oyi li pepi naamwoye.

„One aakuluntu, - - aana yeni ya putudhileni mevuliko nomekumagidho lyOmuwa.” Ef. 6:4.

Isak Kasheeta.

(Omunyoli nguka okwa kala muulongi oomvula 15 nongashingeyi oku li miilonga ku Orajnemund; onkee oku shi shi nawa, shoka ta popi.

Omukwetu.)

na aaleshi? Aawe, ndishi, satana ota kunu ombuto yokusheka omambo, opo aanyoli ya suunye okunyola, manga ethimbo tali piti. Mpaka dhimbulula omukulu gwonale ina fundja sho ta ti: „Pwa kala tako hapo pwa kala kugulu”. Ino dhiladhila u tye: Jehova Kalunga okwa shita efaalela lyuuyuni, aawe, uuyuni owa shitwa ngokayiga konona taka fuluka. Aantu ngele itatu landa iinyolwa iiyapuki ethimbo otali ka ya, nethimbo lyiinyolwa yuuyuni tali ke ya. Sataka na ta ka longa ihe oshilonga she. Aakwetu, ookuku otaa ti: „U li pomeya okunwa u li pomugumbo gwiniima okugandja”. Na ishewe: Fnota olya lya omukwati gwomafuma. Ou shi oshiponga shino ngele inashi tu etha, oomvalo dhetu otadhi ka uka peni? Tu likoleni omambo, opo ga

UUNONA NAU DHIGININE OSKOLA!

Olwindji omulongi gwoskola tu uvu omapulo ngoka:-

- Oongundu oonene otadhi holoka unake moskola yetu?

Unake omalongo taga humu komeho?

Eeno, omapulo ngaka nomakwawo ge ga fa oge na eyamukulo limwe alike. Aakuluntu oyendji otaa yono po elongo lyokanona nepashi ono. Okanona taka ka pashiona oomwedhi hamano. Otashi ti, oomwedhi ne adhike ka nongekwa, oshoka mbali odhefudho.

Okanona nkoka otaka vulu ngiini okuhuma komeho?

Omukwetu, tonatela po mpoka. Thiga po aamwoye, ngele to ka fudha, ngele wa hala, aamwoye ya hume komeho. Noskola yoye opo tayi mono oongundu oonene. Tuma omumwoye kehe esiku koskola, a wape okuhuma komeho ye a wape oku ka aadha koongundu ndhoka oonene, manga inaa aadha okupita moskola.

Okanona oke na omafudho gane (4) momvula. Ogo oga gwana okanona.

Omunandunge, ongoka ta ningi, ngashi a lombwelwa.

Nekundo enene kaakuluntu ayehe, (Dha fupipikwa)

B. J. Kustaa,
omulongi gwoskola,
Luderitz.

kale eliko lyetu aakwetu. Iinyolwa oyindji mbyoka hayi holoka pomathimbo getu oyo wo tayi uvitha evangeli. Nena ngele to sheke iinyolwa iiyapuki, wa ningi omusheki gwoshipango oshititatu nefatululo lyasho.

Otatu ka kala aanelago ngele moompungulo dhetu tamu udha omambo, opo tu vule oku ga paathana omilongelo nookuume ketu. Kaku na eliko li vule omanyolo omayapuki.

Tala nawa nkene u nokulongitha iimaliwa niiniwe yoye ayihe, ongele omoongeshefa dhomuuyuni mbuka nenge omiinyolwa iiyapuki?

Sakeus Efram.

SHITLANGU.

omunagwokombanda

Lya nyolwa
ku
Andre de Clerc
na
Edoardo Mondlane

Lya lundulwa
ku
Hosea Namupala

Etsikilo

Ekapiteli 21.

Omatang aohaga tameke nokupitika Omuwiliki gwago omunene Kristus a popye. Eyele lya popiwa komuwiliki gwetu ta popi nelaka tali kumitha oyo ndika kutya ehokololo lyEvangeli otali gandja tomwe-nyo. Ongulohi yiiningwanima yomaeleko, otwa dhimbulukwa ehokololo lya Jesus ta yogo oompadhi dhaalongwa ye eta ti: - Ogame ngu omuhongi gweni otandi longo oshilonga shomupika. - Omuwa gwetu, omuhongi gwiipilangi okwa li a kutha mo ohema ye nokwa longo, otse notu na okuninga ngashi ye a li a ningi.

Manga omuwiliki a li ta popi, Josua okwa mono ewiwili enene lyolufufu etiliganeti zi moshikuni shu umbilwa peziko. Josua nando omunashilando ngashingeyi ine li palutha noshitago she. Aapulakeni ayehe oya kankwa, ya tegelela ondje ndjoka, olwindji hayi kala pamwe newiwili lyoludhi ndu. Osho lela. Sha ningwa mepathimo lyeho: ondje oyu umbwa mo komulilo, ya tondoka ya lamba oshikuni noya umbwa kiitago yi ili noyi ili sigo ya pwile pokati komakuma gaali.

Konima yeimbilo lya mbwa kegongalo alihe, omusita omuluudhe okwa thikama. Okwa li ti imemeha shaashi te tu pe omagan omanawana: ehokololo lya Masinga, olungano lwa Afrika-lela.

Omusita gwetu okwa tameke e li moonguwo dhe dhokamba, nomainyengo ihe omadhiladhilo oga penduka ye ta wilike niikaha; okwa tameke ngeyi:

Ehokololo lya Masinga

- A vulika sigo okusa, eeno sigo okusa komushigakano. - Ndhika odhi li mombimbeli moka omuyapostoli ta popi Jesus Kristus Omuhupithi gwetu. Otandi fatulula shoka okuvulika taku ti, okukala noonkondo dhevuliko.

Omusamane gumwe omukulupe ngoka a ala ethimbo ele, okua li u uvite ehulilo lye oya hedha ko. Ihe ina kanitha omukumo gokualuka. Okwa ti: Shampa owala tandi etitha Masinga; Oye ota galulile ndje oonkondo dhandje.

Esiku limwe okwi ithana oyana aamati yatatu. Omukuluntu okwa li omukwiita, okwa li e nomwele meke kolumoho, negonga kolulyo. Omutiyaali okwa li omunona kashona, e vulike oomvula dhimwe, okwa li owala e na uutati wonkandja wopana-hambo okwa li omugundjuka omwaanawa. Omutitatu okwa li omushona manga, omusitantana. Ka li unene e na oshindji shopaantu iiti ye oshitago ashike, okwa li ngaa inaa ndjanga.

Aamati yatatu sho ya gongala mondunda yomusamane omuvu okwa ti:

- Aamwandje, otandi ehama tuu shili. Onda kambadhala nuunongo auhe noshonekwatho lyoondohotola adhihe, nonuunganga woonganga koombinga adhihe, ihe osima. Shimwe ashike ndi hi shi, Masinga omunene ngele te ya mpaka, ota aludha ndje. Olye gweni ta yi e ke mu tale.

- Otandi yi tate. - osho omukuluntu a ti:

- Tangi, mumati gwandje, ihe otandi ku kumagidha: opwa pumbiwa oonkondo okugwanitha etumo ndi. Ou na tuu oonkondo? -

O mukwiita okwa yamukula: - Tate, inandi sinda nani aatondi miita? Shaa tuu ndi negonga lyandje, oli na uutoni wombinzi. Ogame ofule nomunankondo. -

- Shi ninga ano mumati gwandje! Ino mana po ethimbo, Taaguluka ekango, netapa, landula okandjila miihwa, eto yi mokuti. Ngele wa adha egumbo mombuga, thikama. Wa adha ethikilo lyeoye. Ithana nduno Masinga to imbi ngeyi:

Sha-wa ni Nwa Ma-si—nga
Tii ku ku-ndu Masi—nga

U—ri yin' nwa—na—nga? U ri yin?
O—shi-ke Omu-mwa-ndje? O—shi-ke?

Mumati gwandje, ngele ou uvite elombwelo lyandje, inda-matuka! -

Nena omkwiita negonga lye moshikaha shokolulyo nomwele moshokolumoho. Okwe endelele ongoshikuti tashi zi monkandja nokwa matuka ootundi odhindji.

Hugunina okwe ya pegumbo kee li shi. Kolulyo okwa li ondunda ombwanawa, kokule kashona kolulyo natango ondunda onkwawo. Egumbo alihe olya yela. Kolumoho lwegumbo oku na oshikuku shoondjuhwa dhomaludhi ogendji popepi noshipungulilo. Ehekevi lyampoka olya li tali adhimba ketango. Ihe apehe opwa mwena. Kape na nando omukiuntu ootuu ta tsu nenge i ipyakidhile niinima yawo, ha ndjuhwa ootuu taye tetena, ha kambishi, ha mbwa, ha shigunda shiikombo nenge shiingulu. Kape na nando osha. Miihwa yopooaha kamu na ootuu uudhila. Othilu! Omukwiita okwa mwena po. A gelelwa muute koshikumitha shi. Ngashingeyi otaningi nee ngiini? Omusimanekwa Masinga oku li peni? Okwa dhimbulukwa oohapu e dhi lombwelwa ku he. Omukwiita okwa thikama pokati kegumbo eti imbi: Tii ku kundu Masinga - (Shawa' ni Nwa Masinga.) Opo mpoka ongundu ayihe oya gongala pomulilo noya yamukula oshita:

Oshike Omumwandje? Oshike?

(U ri yin' nwana nga? U ri yin?)

Shika kashi shi natango eyamukulo kepulo lyomukwiita. Okwa tsikile ko:

- Tate ota alukwa - (Tatana awa babya)

Ongundu oya yamukula:

- Oshike omumwandje? Oshike?

(U ri yin' nwana nga? U ri yin?)

Natango kali shi eyamukulo. Okwa gwe-dha po:

- Ila u ke mu aludhe.

(Tana u ka mu daha) -

Oye nokwa pulakene ongundu tayi yamukula:

- Ondi ku uvite mumwandje. Ondi ku uvite. (Ndza ku twa, nwana nga, ndza ku twa!) -

Pethimbo tuu ndyoka ku yimwe yomoondunda okwa zi oshinima tashi tilitha, omuyoka, omuyoka omunene tagu taagulukala ehalandjandja, tagu ipwedha pevi. Ogwa mwena mepathimo lyeho, gwa yelutha etse, nogwa tala omukwiita noondungu dhomiho. Omuyoka otagu tala, ihe omiho dhagwo otadhi minikile neadhimo lyaa ko. Sho tali hala okuhedha popepi, omukwiita okwa dhiginine egonga lye. Ota kondjitha omuyoka ngeyi? Egonnga olya kola lya gwana okudhipaga ombome, ngele tali ulula olya gwana okutsa aatondi nondungu yomushila gwalyo. Ihe enima ndika kali shi ombome, edhigunene, kali shi eyoka ngomakwawo. . . . Omukwiita okwa kwatwa kuumbanda, a

piluka eta fadhuka po. Okwa tondoka a fa a hilwa a thiki pondunda ye nokwi iunduiiie mo eti iedhiliie mo, a tsike oshipala mekuma nokwa kwatwa kuumbanda nokohoni.

He oku uvu kutya omwana a galuka. Oku uvu omahekumuno. Ina pula sha, okwa tengeneke kutya okugaluka okwoluhodhi. Okwi ithana omwana omutiyaali.

- Mumati gwandje ou uvu tuu mumwan-yoko omukuluntu? Oko e ii hwiya, ta lili kohoni. okwa li a tila. Oto yi?

- Eeno tate otandi yi. Ihe tila sha ndi nuutati wandje. Onda dhipaga nale iiyamakuti iidhigu. -

Osho omumati omutiyaali a shopoka po eta matuka ootundi odhindji. Ongashi omumwayina, okwa thiki pegumbo lya mbugala. Mpoka, kolulyo oku na ondunda yimwe ombwanawa; kokule kashona, onkwawo. . . . Na ehala ndika, olya yela nolya yogoka. Na ishewe emweno tuu ndi. Ha' ndhila, ha' ndjuhwa, ha' ntuko, ha' mwe. Aawe!

Okwa thikama ishewe pokati kegumbo nokwi ithana:

- Tii ku kundu Masinga

(Shawa' ni Nwa Matinga). -

Nongundu yaapulakeni oya yamukula:

- Oshike? (U ri yin) -

Ihe sho a ithana lwahugunina,

- Ila u ke mu aludhe (Tana u ta mu daha)!, - opwa holoka einyengo konima yondunda momwidhi kokule kashona, ita-yi oya teka nenima olya holoka, enima omuyoka, otii ku lombwele, omunene. Ogwa taaguluka ehalandjandja nomainyengo gopandevelo, omaipwedho omapu. Olya mwena kokule kashona nomumati. Lya yelutha omutse mepathimo lyeho. Olya thaneke (nomutse) nontalo yopalodhi oyu ukilile momeho ganakutalela po (gomumati).

Opo mpoka omugundjuka okwa nyengwa, omutima gwe ogwa lunduluka. Na omuyoka ogwe engene kuye. omunahambo niikuti ye ya yagwa, okwa piluka a fadhukile kegumbo ongomuyana-nkuengu nokwi ihata mondunda ye, ta lili kuumbanda nokohoni.

A lala poshiyala she omusamane omukulupe nokwa uvu egaluko lyomwana omutiyaali. Okwe mu uvu ta lili mokwaanoonkondo. Oye nokwi idhiladhilile, oyo aamwandje mbano! Oombandje! Otaa dhiladhila otandi ya tumu ku Masinga ya kase?

Nena omumati omutitatu okwe ya okasita kiikombo, opo owala a adha mpoka. Okwe ya puhe, ngoka a koka muunkundi nokwa kanitha unene omukumo gwe.

Tate, otandi yi ku Masinga notandi mu eta kungoye. -

Mentu gwandje, shoka to ti ku shi shi. Oto ya ngiini kondjila, mpoka aanene, aannankondo oofule ya nyengwa? -

Tate, ngame ine dhenga nando aatondi, nando iiyamakuti iinene, ihe ote yi notandi eta Masinga oshoka onda hala u aluke. Ondi ku hole, tate, nonando ndi nokusila mokukonga Masinga, ote yi.

- Inda ano, - osho he a ti nomufudho guunyengwi.

Okasita koontana oka matuka nondjila yonkandaloya sigo okomahaupu, noka thiki momuthitu gwa thita. Naye wo okwa adha egumbo kee li shi, etokele lya mwena.

Nuudhigu okwi ithana:

- Tii ku kundu Masinga (Shawa' ni Nwa Masinga). -

Ngashi shito ongundu oya yamukula oshita:

- Osh'ke omumwandje, oshike (U ri yin' nwana nga, u ne yin) ? -

Megumboshithigwapo itamu zi eyamukulo. Oye okwa tsikile:

(Tadhi tsikilwa.)

O U N J U N I T A U T O N G O S H I K E

Osivilo shehanganotumo la Soomi

Eti 19 la Januari 1959 eedula efele oda pita, eshi ehanganotumo la Soomi la dikwa mu Helsinki, oshilando shepangelo mu Soomi Momudo 1859 opua pita eedula 700, eshi evangeli la Kristus la fika ku Soomi. Omoluashi omubishofi Schauman okua eta ediladilo olo kutja, osha uapala ngenge omolu elao levangeli olo la tuminua kokule paife, hano momudo 1859, ongerki jovasoomi ji hovele jo okutumina evangeli kovapaani vokokule.

Momido edi adishe Kalunga okua kuafa nokupunika oshilonga shetumo shomOuambo noshomOkavango noshomu Tanganyika noshomu Jerusalem noshomu Kiina (Hongkong na Formasa). Onge okua diladilua okuninga oivilo inene. Pefiku lediko 19 la Januari oku na oshivilo shinene mu Helsinki omo omubishofi M. Simojoki ta popi. Oinima ihapu ja etua komadu etumo letu otai tulua mo (tentoonstelling van Sending) mondjuo ja kula opo i ulike okukala kuopani nelunduluko koMepo Mujapuki, eshi ovañu va tambula oukriste. Mokino omafano mahapu oo taa shiivifa oshilonga shetumo otaa talua.

Oshinima shimue shinene natango tua hala oku shi tumbula osho kutja, ovafitaongalo vavali, umue kOuambo na umue ku Tanganyika, va ifanua koivilo ei okuhokolola oimati jetumo.

Kalunga na punike oshilonga shaje muene omolu ohoole jaje.

EPANDULO NENGONGOTO

Omuleshi umue okue tu shangela ngaha:-

"Heeno, ofje ava tu li mehala-kano poñele eji. ohatu pandula unene, eshi Omukuetu pashiuambo te tu holokele aluhe. Omuje tua popifua mo komatungo ovakriste mahapu."

Okua tumbula nokuli omapandja oo e va hafifa, oo aa: Oshikololo shaagundjuka, Oshikololo shomegumbo. Okaandjetu, Aaleshi taa nyola na Ounjuni tau tongo shike. Heno, omapandja oo aeshe otua hala tu tui-kile nao neudo, osheshi oku noshilonga shihapu kovaleshi aveshe.

Ndele ne omuleshi uetu ote tu ngongotele jo nde ta ti:-

„Nande omatungo ovakriste taa tumua alushe mahapu, ndele ne ova-tungi itava a tula mo mOmukwetu. Luhapu taa ekelwashi ashike, taa monika ke maua."

Omubisofi uovazulu

Epangelotumo lovasveeni ola hoolola omuhongitumwa Helge Fosseus a kale omubishofi uovazulu mongerki onkwaevangeli jopalutheri mokati kovazulu. Omubishofi Fosseus okua longa nale mu Johannesburg. Kalunga ngenge e shi hala, pamue oje te uja a talele po mongerki jetu komesho.

Okaana okatimulongo nokatihatatu.

Mu Fulanisha omu na omukulukadi ou e needula 38 ota teelee okaana kaje okatimulongo nokatihatatu. Aveshe ovo va tetekela venomuenjo nove li naua. Omusamane uomukulukadi ou ta longo a amene omifitu koiponga i liili.

Eengobe dihapu dombulu oda mona oshiponga.

Mufalama "Skuynsbank" mOutjo eengobe di fike 111 oda fja momafiku avali. Omufita uado, omukuangala umue, a li a hala ombelela. Omoluashi okua tula mo oudio (arsenik) unini momeva ado okunua opo nande ongobe imue i fje ndelene oudio ou ua li u neeñgono. Omukulupe ou ombulu okua kanifa ngaha oinamuenjo jaje aihe.

Ejakulo lovandouishimouhaku.

Mu Afrika nomu Asia omu noodohora 68 novahakuli 136 ovo va dja ku Douishlanda. Otu shi shii kutja oodohora novahakuli hava jakula nauanaua moshilonga shetumo mokutaandavelifa ouhamba uaKalunga.

Oshili ope noishangua ihapu itai dulu okupakua mOmukuetu, osheshi eendunge dajo inadi jela nawa. Ndele ne hasho ashike tashi kelele oishangua jovalessi okuja moshifo. Eendjovo dihapu nande di neendunge diua, odi nokuhupipikua, di mone oñele moshifo, ile di nokushangulua nokuli omolu elaka la li inali jela. Oilonga ei ohai pula efimbo lovatungi vOmukuetu ovo ve na oilonga ihapu i lili na i lili. Ngashi paife tua uapeka oishangua je uja nokuli mu Junie 1958. Lididimikeni hano natango, kashimba olufo lueni talu uja tuu.

Moshifo sha Februarie otua hala, tu tumbule vali eeñango dimue tadi kuafa ovanjoli okushanga eendjovo di shi okutambulilua mOmukuetu.

Elias J. Pentti.

OONKUNDANA DHOKU ORANJEMUND.

Felix Erasmus ota hokolola omatanga golwimbo ga gongala eti 20 lya Julie nogi imbi oondjimbo o-dhindji. Aatiligane opo ya li wo. Pehulitho omuhona gumwe okwa ti: "Inandi mona nale aawambo ya gongala ye thike mpaka poohapu dha Kalunga."

Lukas Nahole ota hokolola oshigongi oshikwawo sha gongala 31.8.1958, moka mwa li wo aatiligane naaluudhe. Pwa imbwa omaimbilo. Ehangano lya tya ngaka enene olya nyanyudha mboka ya li ya gongala.

Vilho Andreas Kamati ota hokolola oñepo inene ja monika mu Oranjemund 9.8.1958. Okeeñgono doñepo ojo eshina limue linene lokulonga eeñopa ola tenguka po nde tali lidenge poshi. Esina alishe ola hanauka po filu. Omeameno la Kalunga ovañu inava mona oshiponga.

Isak Kasheeta ota hokolola omumati omuwambo ngoka a mono oshiponga keshina lyontumba nokwa si 28.6.1958. Oye ota pandula aahona yamwe omolweyakulo lyawo enene, sho ya fumvike omumati ngoka pamukalo omwanawa nokulesha wo oohapu dha Kalungu.

Elia Heita ote tu hokololele oiponga ihapu ja ningua ku Oranjemund omudo 1958. Naje muene jo okua teka, ndele Omuene e mu velula. Omumati umue omukuambi okua kala moshihakulilo eehani 15, ndele naje jo okua veluka. Vakua ove mu kuafa, eshi a kala ngaha moluhepo.

Johannes Shipanga ota hokolola wo iiponga imwe ya holoka mu Oranjemund.

Petrus Kangombe ota pandula Kalunga omolwaahona yaali mboka haa ya koshipangelo kehe osondaha okupopitha aavu aawambo noohapu dha Kalunga.

Johannes Kijjala ota hokolola shiponga shomulilo sha holoka mu Windhoek 24.10.1858. Omwa pi ondjugo yomutiligane gumwe, nomuyo omwa pile wo iinima yomusamene gwoshilongo shUukolonkadhi Iikasha Nkandi, mbyoka a li e yi landa niimaliwa oyindji. Kalunga ne tu game ne koshiponga shomulilo, nongashi hatu shi indile osondaha kehe melongelokalunga.

Simeon Iijambo, Ohopoho, okwe tu hokololele ekakamo lyevi moKao-koveld. Esiku eti 27 lya Augustus 1958 evi lya kakama moKayoko a-kehe uule woominute ntano.

AALESHI TAA NYOLA

OMAYELETUMBULO GAAWAMBO.

Johannes Shitima, Okahandja, ota dhimbulukitha aamwayina yomehalakano, ya kwathe aakuluntu yawo nimaliwa mbyoka haye yi taamba. "Ompinda ya vala ihayi lika kombwa." Oshike ano tatu etha ootate noomeme taa lika koluhepo?

Naemi Ndamonamo Shikulo, Engela, okua hokolola oshivilo shaje shepameko nde ta kundu ovanjasha vakauo neimbilo 504.

Josef Jakob, Pretoria, ota pandula etumo lyaasuomi mOwambo. Oye ote tu londodha omolwomatumo omape ngoka tagi iyakele mOwambo, go inaga tseyu kutya, aawambo oya monika ngiini noya li ngiini petameko.

Daniel D. Amuama, Windhoek, okwa dhimbulula iponga yiikolitha noyoluhondelo no ta ti: "Tu kondjeleni shili okutunga evi lyaandjetu Owambo. Tu kondjeleni omapipi taga landula ko."

P. S. Ndjuluua, Walvisbaai, okwa mono, omutiligane gumwe ihata po noshitututu (okapakapaka) nokwa si. Onke ota ti: "Hinga nawa, ongoye omuhingi gwa shaa shoka we shi landa, opo shaaye ku fale meso ombadhilila."

Albin Abed Kandongo, Oranjemund, okua shanga omolu ovamati ovauambo va ja koilongo jokokule, ku Angola, ku Betjuanalana, ku Kaapstad ile ku Pretoria. Okua tila, venja ve li ko, ova tualua ko koufua nova kanifa oshihako shOmuene.

R. T. Mpangula, Swakopmund, okue tu shangela eendjovo dimue domepsalm 25. Epulo laje limue ota li ka njamukulua komesho.

W. Heita, Okatope, ote tu kumaida, tu ilikanene ovakuetu ava ovaŋgundi meitavelo.

Natnael Uejulu, Outjo, ota hokolola omaufo madjuu a ufua omolu omikifi doimuna. Eengombe 21 oda jashua kovapolifi, eshi da ŋuka ongamba oule ueemeile mbali netata.

Jesaja Ngumbilemo, Okalongo, ota ti: "Dja mo monduda joulunde. Jesus te ku ifana."

Ngenge omuŋu ta holoka koshipala sha Kalunga konima jombila, kaku na ondombuedi jomuŋu, ngeno a kale ombangi joku mu popila, ahoue, oilonga jetu neendjovo detu nomadiladilo etu nohoole jetu nokuhadulika kuetu nouhefi uetu nounje uetu ojo aike tai ka ninga ondombuedi joubangi uetu' ngenge ouua ile ouii.

(Da tumua ku Elia Heita).

KOniipa okwa holoka embo tali nyanyudha omuwambo kehe. Meme Helmi Haapanen okwa gongele omatumbulo gaakulu yonale pamwe nomafatululo gago nokwe ga tula melandulathano, ga ninge embo enene. Embo ndyoka "Omayeletumbulo gaawambo" oli nomatumbulo konyala omayuvi gaali nomafatululo gago. Oli nomapandja 228 nolupe oluwanawa shili.

Embo ndika otali landwa kOwambo iithilinga ine nosipenitha.

4/6

Oomboka ya hala, ye li tuminwe kUushimba, naa gwedhele ko 6d. Ostora yomambo, Oniipa, Pk. Ondangua, S.W.A.

"Ontentekeli ihayi nu omeya genono."



H.F. Reinhold Ferdinand, Oranjemund, ohe tu kumaida, tu kondje tu ka fike ko ku Sioni jopombanda ei tue i longelua, ne te tu kundu mohoole jOmuene Jesus omuvalelua komushiakano.

Aamati oyendji oye tu tumine omakundo goohapu dha Kalunga. **Sh. H. Shikongo, Windhoek**, ote tu kundu noohapu dhi li mOmayel. 30: 2-6 na Ef. 6:23-24. Ekundo lya **Abraham Johannes, Okahandja**, olyo Hosea. 10:1-4, 11-12, nolya **Lukas J. Haipinge, Lusaka**, olyo Fil. 4:4-9. **T. Nuujoma, Windhoek**, okwe tu nyolele oohapu dhi li mu 2 Tim. 2:19, 22-26.

Natanael Elia Hauliondjamba, Engela, okue tu tumina ehokololo limue, ndele ne inali mona oŋele moshifo shetu.

N. Elieser Shikongo, Gobabis, okua dimbulula kutya, aakuluntu yomagongalo oye nokukala aakriste mboka ya monika ye niyimati iivanawa nohaa endathana nombili naantu ooyakwawo.

E. Muatukange oku noluhodhi olunene omolwaalongi mboka ya kongo oostora dhawo yene. Okwa nyengwa komuntu e niimpuyu iyali note tu dhimbulukitha oohapu dhi li mu Mateus 6:24-26.

OMAMINIKO OKRISMESA NOMUDO MUPE.

Onye amushu ava hamu lande omatamba noinima i lili na i lili kufje, otue mu halela Okrismesa iua i na ehafo nomudo mupe u na elao, no u jadi ejambeko neveluko.

S. H. Shafasike,

Poŋele ja Gebr. Diekmann,
P. O. Box 16.
Otjiwarongo.

ONGOMBE YA KANA

Onda kanitha ongombe ontiliganelela yi na ontana. Yo yene oya tetwa kokutsi kwokululyo nenge ndi tye kekandelo, nokekandelo eyala moshao. Omushila omupembe gwegonga. Oya kana omwedhi Desember 1957.

Ngoka we yi mono, tuma eyamukulo kegongalo lyOSHIGAMBO, omukunda Oshatotwa.

Josef Shipanga,
Neue Haribes, Mariental.

Ilandela Okambo komukwanegongalo kehe.

KOwambo -/4; kUushimba -/5.



OMUKWETU TA PANDULWA.

Otandi pandula Omukwetu notandi pandula oomboka hamu lesa nohamu nyola mo sha. OmOmukwetu nda lesa esilohenda lya Tate Kalunga tali kala aluheluhe. Moka twa tsakanene nookuume oyendji omokunyola sha mOmukwetu. Moka ewi lyevangeli lya hokololwa kookuume, nookuume ye tu kundu mOmuwa. Moka omumwameme e tu lombwele ta ti:

"Omumati omunyasha,
Owambo ino dhimbwa!
KUushimba u longe,
KOwambo shuna!

Hoka sheeli nonkelo ye li."

Paulus A. Shigwedha, Windhoek.