

OMUKWETU

No 4.

April

1957.



WA HANGANITHWA NA KALUNGA.

Ku Golgata kua li ku nesiku lyehanganitho. Kalunga okwa li ko nokwa hanganitha uuyuni naye mwene.

Otu shi shi peni? "Oye okwe tu pe ohapu yehanganitho."

Kalunga oku li mokati ketu moohapu dhe nohe tu hokololele iilonga ye mbyoka e yi tu longele. Otu na wo omasakramenti omayapuki, ngoka ge noonkondo oku tu hokololele oshilonga shehanganitho. Oohapu dhehanganitho hadhi uvithwa nuuyuni auhe, nomudho kehe guawe ta hokololelwa edhimopo lyoondjo dhe. Mugo otatu lombwelwa: "Nenge kamu shi shi, otseni mbaka twa shashelwa mu Kristus Yesus, otwa shashelwa meso lye?" na "Oshitenga shika osho ehanganitho epe lyombinzi yandje, tayi mu tililwahi okudhi na po oondjo."

Nangoye wo owa hanganithwa na Kalunga!

Pamwe u nuudhigu okushi itaala. Owa hala, u shi itaale? Owa hala, u shi tseye shili, kutya wa hupithwa ku Kalunga? Nena kutha oohapu dha Kalunga! Lesha mo oohapu tadhi ku hokololele okusa kwa Yesus, u tale ohoole ya Kalunga, mpoka yi thike. mudho to mono, nkene Kalunga a kala e ku hoole nokwa gandja Epona lye, a hepekwe, sigo ta si omolwoye. Uuehame

we kawa li wokolutu auke. Oye okwa aadhika kuuehame mboka womeni, wa li u noku ku aadha omolwoondjo dhoye. Omolwohoole ya Kalunga ayike ngoye ino aadhika kuwo. Kalunga okwa ningi Omuwana uulunde peha lyoye.

Tala uuehame wOmuna gwa Kalunga mu Getsemane! Oshitenga she sha li oshilulu shili. Omazigudhe ge oga shituka o mbinzi. Omolwa shike? Omolwoye. Oye a kala ko peha lyoye.

Tala, nkene oye e endjelele komshigakano, e ekelwahi kaantu noku Kalunga! Muuehame we oye okwi iigidha: "Kalunga kandje, Kalunga kandje, oshike we ekelehi ndje?" Omolwa shike uuehame u thike mpo? Omolwa shoka oye okwa ningi uulunde nokwa aadhika kepangulo lyuuyuki wa Kalunga, opo ngoye u wape okukala koshipala sha Kalunga u li po omuyuki.

Olugodhi olwa ningi oludhigu. Pulakena, nkene lwa hulu! "Osha longwa sha pu!" Oshike? Oshono, wa li we shi pulwa kompango. Ashihe shono Kalunga okwa li e shi ku pula muuyuki we, oye mwene okwe shi ku gwanithile wo.

Wa hanganithwa na Kalunga!

Otashi vulika tuu, shika shi kale oshili? Eeno, kuume kandje, osho oshilielela. Owa hanganithwa na Kalunga sigo aluheluhe.

Ongoye wa hanganithwa na Kalunga. Omuna gwa Kalunga okwe ku sile nokwe ku thigile omizalo dhuuyuki we, u dhi izale. Ngashingeyi to vulu okuya kuHo waa nuumbanda, ha miinyanyu yoye ya nyata, ha nuumbanda wepangulo, aawe, omega-meno lyombinzi ya Yesus, u li po omukulitwa nomumangululwa.

Wa hanganithwa na Kalunga. Nenge ope na tuu natango epangulo lya sha tali ku aadha? Epulo lya tya ngaaka lyuumbanda pamawe olya zi mpoka, sho wa dhiladhila oshilonga sha Kalunga osho shoka shedhimopo alike. Ihe tala: ku Golgata kaku nedhimopo alike, ope nehanganitho. "Kalunga kwa li mu Kristus nokwa hanganitha uuyuni naye mwene." "Osha longwa sha pu!" Ompango oya gwanithwa. Uuyuki wa Kalunga, na ayihe, mbyoka ya pulwa kuwo, oya gwanithwa. Inapu thigala nando okanima kamwe inaaka gwanithwa. Ashihe osha gwana sha pwa. Ashihe oshe ku gwanena.

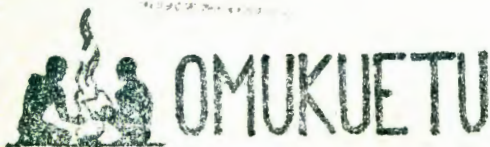
Uuyamba wesilohenda mboka tau aadha omulunde owo wa gwanenena, u nuuyuki nuuyapuki wa gwana. Omulunde a silwahenda oha kala e nomwenyo mesilohenda lyu uuka. Oye u uvite ombili momuenyo gwe. Oye e nombili mejuuve lye nokoshipala sha Kalunga.

Wa hanganithwa na Kalunga!

Kape nelago enene li vule ndyoka. Ombili yi thike peni! Enyanyu li thike peni! Wa hanganithwa na Kalunga! Ongoye omuna gwa Kalunga!

Vainö E Hyvönen.





April 1957

OSHLI.

Ondu uuvu, aantu mboka ya hala okusheka iigwana yaaluudhe, oya ti: "Oye na iinima itatu ya simana mokati kayo: onyalo nuufuthi niifundja." Eeno, esheko olyo esheko, kali shi kulandulwa. Ihe esheko ndika oli na ngaa sha, oshoka iinima tuu mbyoka itatu ohayi monika olwindji nomevi ndika wo.

Aantu oyendji oye nuudhigu shili okupopya oshili ya yela, oshoka oya putuka mokati kiifundja noya putudhilwa iifundja. Omathimbo gonaale, manga oohapu dha Kalunga inadhi uuvithwa natango mOwambo, aantu oya tila okuholola oshili ya gwana. Unene ngele omuntu a aadhika koshipala shomukwaniilwa nenge shomunene-ntu gulwe, oye ina popya oshinima, ngashi shi li po, ihe okwe shi popi, ngashi a tenge-neke, omuntu ngoka omunene a hala oku shi uuva. Onkee ano sigo onena oyendji taa kambadhala okupopya oohapu ndhoka tadhi oopalele aapulakeni, nando esiku limwe kadhi shi dhoshili. Ano oya fa ye shi, iifundja yo oopalele andola aantu, nando otu shi shi, inayi oopalele nando ogumwe. Oshili ya yela otayi oopalele omupopi nomupulakeni kehe.

Unene omuntu oku hoole okuholeka oshili, ngele oyo yi noku mu tompela uusama we mwene. Konyala kehe gumwe ta kambadhala tango okupatana, ngele ta pulwa eyono lye, nando oku shi shi naanaa, shoka e shi longo. Okupatana nakwo wo iifundja. Omuntu ngoka a minikilwa nokwa manguluka nawa momweuyo gwe, ota popi oshili ya yela, nando nayi mu pangulithe. Oshili oyo aluhe oshinima oshivanawa, itashi pumbwa okutilika.

Omuwambo ngele ti indilwa sha, oye ke hoole okutinda nokutindilila. Oshitya shetindo "aawe" kashi holike komuwambo. Oye ota kambadhala ngaa okuholola ezimba lyezimino, nando momwenyo gwe mu na ngiika omalimbililo nomaimbo netindo nokuli. Omukalo ngoka ogu nuwanawa wagwo, ihe ogu na wo oshiponga. Olwindji ezimino lya tya ngaaka oli nihelele. Omuntu otu uuvanekele mukwawo sha, ye ke na mpo te shi gwanitha, inee shi dhiladhila nokuli. Omudhiginini gwoshili ya yela ke na mpo ta mbembeleke ngeyi ooyakwawo. Oye ota dhiginine oohapu dha Yesus, sho kwa ti: "Oohapu dheni nadhi tye: Eeno, eeno, nenge: Awe, awe. Ndhoka dha gwedhwa ko, oombwinayi." (Mat. 5:37.)

Oshili itayi holoka moohapu adhike; otayi dhimbululwa wo momikalo dhomuntu. Omuningithi nomufudhime naye wo omufundja. Nando momagongalo getu mu naantu omayovi, aakriste yashili kaye shi oyendji unene.

Shaa mpoka oshili ya pumba, ope nomalimbililo ogendji nuumbanda owindji.



Ovakainu ova ka konga omudimba ua Jesus, ndelene ova mona osho inave shi teelega nande. Manga va li mondjila, ova kuatua komalimbililo omolu emanja la tulua kombila. Ndelene ondjila jokuja momtilla nande ja li ja fitikua ngaha, Kalunga muene a hangika e va palela ondjila ha-okufika komudimba ua Jesus - ndelene ku Jesus e nomuenjo.

Efiku lenjumuko oli nelaka linene: fje atushe otua palelua ku Kalunga muene ondjila. Ondjila ja shike? Ondjila iua i dule

Oshili otayi mangulula omwenyo gwomuntu notayi tungu ombili neinekelathano pokati kaantu naantu.

Omupangeli Pontius Pilatus okwa pula: "Oshili oshike?" Ope noluhepo olunene, ngele naapangeli wo inaa tseya oshili nenge inaa hala oku yi itaala. Oshili yi nomwenyo, Omuwa Yesus Kristus, okwa thikama koshipala sha Pilatus, ihe oye okwe mu tumu a aalelwe komushigakano.

Oyendji oya aalele natango oshili komushigakano noya mangulula Barabbas. Oyendji oyi iigilile iifundja noohapu dha dhingoloka, sigo itaa vulu we okupopya dhi-lwe. Oya ningi aapika yiifundja. Kaye shi kumangululwa ku sha shilwe, okoshili tuu ndjoka yi nomwenyo, oku Yesus Kristus.

Ngele twa hala, uukriste wa shili u tsame nawa mevi ndika, otu nokulalakana oshili ya yela noku yi dhiginina miinima iinene nomiinima iishona, aluheluhe.

eendjila adishe. Ondjila iua ojo aike tai uana okuendua komunu ua Kalunga. Ondjila jokuja ku Jesus e nomuenjo! Ondjila jehupifo! Menjumuko la Jesus omadiladilo manene a Kalunga okulongekidila omunu ehupifo nokuhanauna po oilonga aishe jomutondi a shakanifua. (Kol. 2:15). Efiku lenjumuko olo efiku leshito lipe! Enjumuko la Jesus tali ti hano: omunu a palelua ondjila iuaiua, a shune vali meshito! Ehupifo laje la longua la pua!

Paife ondjila jedimopo lomatimba no joujuuki oja palua hano (Rom. 4:25), omunu ua Kalunga a kale vali omujuuki, ngashi Kalunga e mu shita.

Paife ondjila jokeumbo jo oja palua. Omunu ita pumbua okukala vali epongo, ou e li kokule neumbo, kokule nouua nohoole jomeumbo, ahoue, paife e nompito jokuninga vali omona ua Kalunga nokukala pu Kalunga.

Ndelene ondjila jemanguluko jo no jomuenjo mupe oja palua. Omunu ota ka ninga vali mu Jesus Kristus cfimano la Kalunga nomunu uajelela ou he mu kalele (Rom. 7:6), fijo ta ka mangululua momaimbo aeshe oo tae mu kelele okulongela Omuene (Ehololo 7:15).

Ndelene Kalunga menjumuko la Jesus okue tu palele jo ondjila jokuja komunu omukuetu. Menjumuko la Jesus ouui ou jo aushe kuningilafana ouui. Mu Kristus omunu no mokukalafana kuavo nomunu omukuauo ota shuna meshito, okutja ota ningi vali omujakuli uomukuauo.

Fijo enjumuko la Jesus tali ti jo: Kalunga e tu palela ondjila jokuja momuenjo

O K A A N D J E T U



FILENI OSHIUANA SHOVA- UAMBO OŅGENDA!

Oshiuana otashi filua ngahelipi oŅgenda?

Unene omukriste keshe ota shiiva okunjamukula epulo li li ngaha, osheshi oje muene omufiluaŅgenda, okutja oje muene omujakulua ou a jakulifua nde ha jakulifua vali keshe efiku ejakulo linene ine li lilingela nande. Omukriste ota shiiva kutja oshiuana shoŅumba tashi filua oŅgenda, nge tashi jakulua medina la Jesus Kristus nde tashi longua eendjovo da Kalunga nde tashi uudifilua evangeli lehupifo lomu Jesus Kristus. Ngenge pe noshuana shi novaŅu vahapu ovo va taambula eendjovo da Kalunga nova ninga ovaitaveli va shili va Jesus Kristus, otu shi shii, oshiuana osho osha mona oŅgenda i he fji kutumbulua nokujelaku.

Ndelene epulo olo „oshuana tashi filua oŅgenda ngahelipi” ohatu dulu oku li njamukula vali ngaha: Oku noinima hai shundula no hai etele omuŅu noshuana oshiponga. Na ku na vali oinima hai jambula no hai etele omuŅu noshuana epuniko. Oinima ojo hai shundula nge tai kondjifua na ojo haji etele epuniko nejambuko nge tai kondjelua, opo tuu opo ovaŅu tava filua oŅgenda, na opo tuu opo pe nefiloŅgenda nohoole jokuhoola oshiuana.

Omukriste keshe a ifanenua ejakulo li li ngaha, ndelene unene fje atushe tua ningi ovajakuli voŅumba veongalo la Kristus otue

ualushe. Mu Kristus mu he nefjo. „Efjo la ponua, ola findua sheke.” Oshivelo sha paradisa osha jeululua vali!

Kalunga na hambelue, ou te tu pe efiandano omolua Jesus Kristus!

E. Hynönen.

EIMBILO LENJUMUKO

*Fikufindano la fika,
fje tua dja moutekupika,
: Eti lefjo la teka! :
Vanamuenjo nje amushe,
pandekeleni akushe:
Tu nondjai ja findana.*

*Vatondadi nje vonale
omue mu tuile je a kale
: a pakua melambo ne? :
Heno, osho je a ninga,
nga Kalunga e shi shinga,
shuuje shi mu uapalele.*

*She ja shili sha uapala,
ng' vahongua ve mu tala,
: Ņge e ja moujelele. :
Hano, mukriste, ino kema,
ino anjena momulema:
J' e ku pa u findane.*

*Nge ua fikama pombila,
ino tila, ino lila,
: Kristus je ejumukol :
Oikuanjuni nga ja hulu,
moshilongo shomeulu
j' e ku nin' oukalelo.*

(Ongovela: "Ostern, Ostern . . .")
P.S.

li ifanenua. Unene fje hatu lombuelua: Fileni oshiuana sheni oŅgenda!

Oinima ojo hai shundula omuŅu noshuana ihapu, ndelene paife tua hala okupopja kanini shimue shajo: oikoluifa. Ile oikoluifa i he fji kukondjifua, hai jambula nde hai etele oshiuana epuniko? Onda ninga efimbo lile medu lovauambo, ndelene fijo nena inandi hanga omuuambo nande umue ta lombuele nge kutja oikoluifa hai eta ouua nepuniko. Vamue va lombuela nge nga kutja inava mona moikoluifa ouui ua sha, ndelene vahapuvahapu va hepaulula - ve he nomalimbililo - kutja oikoluifoa jo oshiponga, jo ihai eta ouua ua sha ile epuniko la sha, eshunduko alike. Moshinima eshi shoikoluifa omalimbililo ovaŅu inaa tukuka unene, osheshi oimati ii joikoluifa ihapu no i li po hai kala jo luhapu poluhaela, Ovo jo have i nu nde have i longifa, ihave i popile, osheshi vahapu vavo va shiiva nokuli muvovene eeŅgono dajo dokushundula omuŅu. Kaume koikoluifa nge to mu pula okunua kuaje, okutja omolua shike ta nu, ota njengua okunjamukula naua. Mokunjengua kuaje luhapu ota njamukula ashike: „Osho oŅgedi jetu” ile „osho vahapu hava ningi” ile „osho tua iika,” ndelene meni laje mui e nomalimbililo, a fa e uudite, oikoluifa i he fji kupopilua, ojo oshiponga, oja hovela oku mu pika nokuli. Oikoluifa i na shili eeŅgono dokupika, oŅge ojo „omuene” e novapika vahapu noja kala jo alushe oshilongifo shiua meke lomutondi okushundula ovaŅu noiuanu.

Oshinima eshi kutja oikoluifa hai tuala oiuanu meshunduko no mehanauno osha dimbululua naale. Mounjuni ukulu nokuli, mefimbo loupaani fokofoko oshiponga eshi osha kondjifua.

Mu India omua kala omulongi umue

omupaani, edina laje Gotama. Omolu elongo laje a peua edina lopoŅo Buddha, tali ti „omuminikilua.” Okua fja odula 480 Kristus manga ina dalua. Paife opua pita hano eedula 2436 kokufja kuaje. Buddha okua fijila po ovaitaveli vaje ile ovahongua vaje oipango itano inene. Moshipango shaje shimue ota popi oikoluifa noku i indika. Okua dimbulula ojo oshiponga, oŅge e i kelela kovahongua vaje. Moiuana inja inene jomuAsia omu novahongua vahapu va Buddha - ove fike peemiljona 150 paife, oŅge oko ku na jo vahapu ihava makele nande oikoluifa.

Ovaegipiti vakulu jo va fa va dimbulula oshiponga shoikoluifa. Osho tashi monika mehokololo lavo okuhokolola ejeelu la mana po oiuanu. Pahokololo lavo ejeelu olo la mana po oiuanu la li li he fji ejeelu lomeva ndelene ejeelu lohonde no loikoluifa.

Moshilongo shikulu shovaroma ovakaiŅu va indikua okunua oikoluifa. Ohoni inene omukaiŅu ngenge a nua. Unene omolu oshilonga shavo shouteku okutekula oouna ovakaiŅu inava pitikua okunua. Otu shi shii, pehulilo lefimbo lohilongo osho ovakaiŅu jo va hovela okunua. Moivilo javo omua nuua no mua longua oihuna ililii nokulilii. Eshunduko linene le uja, fijo oshilongo shovene sha hanaunua po.

Omulongi umue omunene omuroma, edina laje Seneca, mokulonga kuaje - eshi a kondjifa oshiponga shoikoluifa - okua tja ngaha efiku limue: „OmuŅu ou oku li po ta diladila kutja ota dulu okunua oikoluifa, je ita mono nande oshiponga, je ita hepifa nande omaano oo e a peua, a fa omuŅu ta diladila kutja ota dulu okunua oudio, nde ita fi, ile ta dulu okunua omuti oukokofeka, nde ita kofa.” Seneca okua kala mu Roma mounjuni ua Jesus.

Omulongi umue vali omuroma, edina laje Epiktetos okua tja: „Omuvinu u noitai itatu: shimue tashi humbata ouhalu, oshitivali shi noukolue, oshititatu oukolokoshi”.

Ngashi oiuanu ihapu jovapaani osho ovauambo jo mupaani uavo va koneka oshiponga shoikoluifa Aanona novakaiŅu novamati jo inava peua omalodu ile oikoluifa imue ililii. Kashimba ovakaiŅu ovauambo jo omolu oshilonga shavo shouteku ova li ve nokukala ovalidiliki. OŅgolue mefimbo loupaani a talua e he fji vali omuŅu - oje omupuidi. Omalodu ina nuua nokuli apeshe, a nuua mouhamba nomomaumbo manene. Ndelene ovapia ovo va tonata, eshi va ifanua, va je komalodu, inava nua vali unene, va ha kanife onduge, osheshi luhapu momaumbo manene ile mouhamba ovaŅu va nuefua, opo pu monike oŅmito iua joku va denga ile joku va dipaa po nokuli.

Heno, ekondjo lokukondjifa oshiponga shoikoluifa olikulu. Ovapaani jo ova kala have shi kondjifa paeŅgono no pandunge davo.

Nge hatu hovele okujeleka efimbo lo-paife nefimbo likulu loupaani medu eli lovauambo, otu nokuhepaulula, efimbo loupaani la fa la li ihuepo. Eshunduko lopaife linene. Oikoluifa no moshuana shovauambo oja holola naa naa eeŅgono dajo dokupika nokushundula. EeŅgedi dikulu dovalumeŅu dokunua oda ninga paife eeŅgedi dovamati

Etsikilo kepaŅdja eti 4.

FILENI.

no dovakaiñu jo. Moshuana eshi omu na paife ovamati vahapu va ninga nale ovapika. Nge to kendabala okukundafana navo oinima ei, oto koneke diva oupika uavo. Okukalamuenjo kuavo jo otaku holola kutja oikoluifa oja ninga "omuene" uavo ou ta mane po oimaliva javo nefimbo lavo no ta njono po omalutu neemuenjo davo nokukalamuenjo kuavo akushe. Oshuana shinini shovauambo oshi novalumeñu ovanjasha omajuvu ovo va njonauñua po koikoluifa, ndelene ovalumeñulela ovanjasha ovo va ninga ovalidiliki no ve li po ve noshisho shokuehena komesho noshisho shoshuana ova pumba. Omulumeñu omuuambo e li paife meshunduko linene, a fa ina koneka narde okuifanua kuaje noshilonga shaje, e shi uufilua ku Kalunga.

Eshunduko loshiuana eshi itali monika ashike movalumeñu, ndelene unene tali monika movakaiñu. Ovakaiñu ovo tuu ova-dungi vomalodu. Tete moupaani ova dungila ovasamane, ndelene paife hava dungile jo ovamati nokulidungila vovene nokudungila ounona vavo vanini nokuli. Oojina joshuana eshi - vahapu vavo - otu shi shii - ohava nuefa ounona vavo vanini omalodul Ohoole joojina oja shituka oshihoole shongaho osho tashi njono po ovanini va Kalunga! Kape nomalimbililo, nge hatu diladila ovamati vahapu vomoshuana eshi ovo va ninga mounjasha uavo nokuli ovapika voikoluifa, oojina javo ove va tula mondjila tuu ojo jeshunduko! Apa tua uana okudimbulukua eendjovo da Jesus tadi ti: "Itashi dulika, omashindo e he uje, ndele uuo ou te a eta. Emanja loshini ngeno tali tulikua kofingo jaje a umbilue moule uefuta, oshe mu uapalela, shi dule okushinda kuaje umue uava vanini". (Luk.17:1-2.) Jesus Kristus oku li po e hoole cunona ovauambo jo, e noshisho shavo, oñge oku li po jo te va kondjele. Oje ita pitika tava hongaulua! Nande oojina javo ite va pe epitikilo olo! Ndelene oojina joshuana eshi va hovela okuhongaula ovana vavo, ohatu pula, oshuana otashi ka kala ngahelipi? Kaume kounona, Jesus Kristus e nelaka lidjuu: Uuo, nje oojina mua hongaula ovana veni! Uuo, ove oshuana ho hongaula ovana voje! Oshuana shi he noshisho shounona vasho, ndelene osha hovela nokuli oku va hongaula, oshi he neteelelo la sha.

Ovajakuli ovakuetu, tu fileni oshuana shovauambo oñgenda. Kristus ckue tu fila oñgenda nokua hala jo okufila oshuana eshi ashishe oñgenda, opo omadiadilo maua a Kalunga a shakenifue mokukalamuenjo kuasho. Fje oñimbu ja Kristus mejakulo laje lokujakula oshuana shaje. Oñge inatu i jandjeni vali koulunde, ong'omatati oukolokoshi, ndelene tu lijandjeni ku Kalunga. Ofje ovakriste otua ifanenua shili ejakulo loshiuana, tu shi file oñgenda. Na ombinga imue jomejakulo eli ojo okukondjifa oshiponga shoikoluifa, osheshi ojo ja ninga shili oudu uolutapo uoshuana shovauambo jo, u shi njone po.

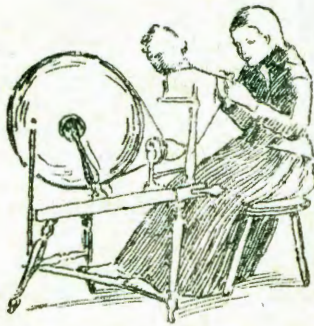
E. Hynönen.

Omupangi Eva Holm okwa shuna ku Soomi esiku eti 9 Iya April a ka fudhe po manga.

IIYATA.

Aantu yotango oya zala iifo yomiti. Omboka ye ya landula, oya zala wo iipa yimuna noyiyamakuti, ngashi aantu yamwe haye shi ningi sigo onena. Ihe inapa pita ngiika omathimbo omale, aantu oyi ilongo ekutungu iyata nokuihondjela omizalo omiwanawa.

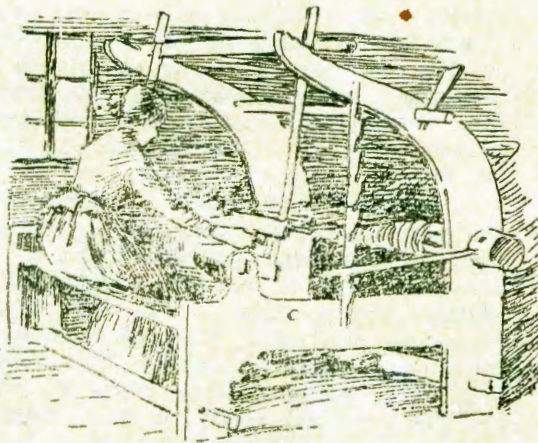
Iitungitho yiyata oyi li po yopaali. Yimwe otayi monika miishitwa; iikwawo oya longwa kaantu. Mbyoka yopanshitwe oyo iifufu notheyi niilugu nolina niikwawo ya fa mbyoka.



Iifufu oyindji otayi monika moonzi. Oonzi otadhi kululwa, niifufu otayi tuminwa koofabrika, moka otayi oopalekwa notayi kuthwa omagadhi. Otayi „kamulwa” ihe momashina omanene notayi yogohwa, yi ninge ongodhi yiifufu.

Muuyuni wonaale iilonga mbika ayihe oya longwa momagumbo. Mefano lyetu lyotango omu nomukadhona ta yogoha iifufu nokashina ke. Ngashingeyi iilonga mbyoka otayi longwa moofabrika nuupu nokuendelela.

Iiyata oya tungwa wo naale momagumbo. Mefano etiyaali omukulukadhi a kuu-tumba poshitungitho she. Ongodhi yokutungitha ote yi umbu niikaha ye pokati koongodhi dhomatungitho. Omapingathano goongodhi dhomatungilo ote ga uutha noopadhi dhe.



Moofabrika eshina enene otali longo iilonga mbyoka ayihe pamukalo gwokukumitha shili. Omuleli gweshina oku li po owala ta tonatele eshina, lyaa mone oshiponga, nota tula mo iinima mbyoka tayi pumbiwa mo. Eshina lyo lyene otali enditha oongodhi adhihe pamukalo gwetungo notayi gandja oshiyata sha pwa, sha gonywa nokuli iipundi.

Otheyi yo yene oya „yogohwa” komazinyo gontumba haga monika moshihwa shentumba. Omazinyo ngoka otagi igonyene

mokangodhi okashonalela taka zi momalutu gago gene. Aantu otaa gongele „uupakete” wa tya ngaaka notaye u tula momeya omapyu. Omo moka uungodhi otau zi kumwe notau vulu okuyogohwa ishewe kumwe, u ninge oongodhi dha kola.

Otheyielela oya pumba. Iiyata oyindji mbyoka hayi ithanwa „otheyi” oyo oludhi lu ili, lwa longwa owala kuunkulungu waa-ntu.

Iilugu otayi monika mihwa yoshilugu. Oya shitwa, yi kwathe oonsheno dho-shilugu, dhi tuke nawa kokule mombepo. Aantu otaa gongele iilugu mihwa notaa kutha mo oonsheno notaye yi ningi konyala ngashi twa popi iifufu.

Oliina oyo oshigwanga oshishona shi nuukolele; ihaashi teka nuupu. Aantu ohaa kunu oliina momapya. Sho ya koko, otayi muwa notayi kukutikwa. Komeho otayi tutikwa ishewe momeya notayi oopalekwa pamikalo dhi ili nodhi ili, sigo kwa hupu owala oongodhi ndhoka ihaadhi teka. Odho otadhi yogohwa ihe.

Omaasigo otaga longithwa konyala ngashi oliina. Muuyuni omu na wo iimeno iikwawo yi shi okulongithwa pamukalo tuu ngoka.

Muuyuni wongashingeyi aantu oya mono oondunge dhokulongekidha oongodhi dhi ili nodhi ili, dhi nuukolele u vule wotheyi nowoliina. Oshiti showala otashi vulu okuteyagulwa nokutsuwa, nuusila mboka otau telekwa pamikalo dhi ili nodhi ili, sigo tau ningi okangodhi ka kola. Omaludhi omakwawo goongodhi otaga zi momahini nomoombundufukwa nomooniga dhiimuna. Ongodhi ya „asbes” otayi zi nokuli momamanyanya gontumba. Oyo kayi na mpoka tayi pi, nando nayi tulwe meziko. Onkee ohayi tungithwa uulapi woolamba dhi nuuyelele owindji.

Omalwala giyata otaga longekidhwa pamikalo mbali. Oongodhi dhaomalwala gi ili nogi ili ngele tadhi tungilwa mumwe nuunkulungu, otapu holoka oshiyata shi noma-lwala go oopala. Ihe iyata ya tya ngaaka oyi nondilo aluhe. Iiyata yaa nondilo oya mono omalwala gayo pamukalo gu ili. Tango otapu tungwa oshiyata oshitokele to, nokusho otaku nyanyangidhwa omafano gomalwala gi ili nogi ili, ngashi omafano ngoka tu ga na momambo getu Oombapa ngele inadhi kola nawa, oshiyata otathi kanitha mbala omalwala gasho.

OMAPULO OVALESHI HAA NJAMUKULUA.

Omuleshi umue okue tu tumina oñu-mafo ileile, i nomapulo mahapu. Ihatu dulu okunjanjangida apa adishe odo e di shanga, ndele ne ohatu kendabala nga okueta eendunge dado, opo tu dule jo okunjamukula omapulo aje.

Epulo linene lomuleshi oo uetu olo eli: **OMOLUA SHIKE PE NEENGERKI DIHAPU KOMBADA JEDU?**

Tete omuleshi uetu oha tumbula oini-ma imue, ojo nafje jo hatu i tumbula apa pahupi.

„Kalunga okua jandja oipango jaje kovañu vaje ovaisrael. Okue ji va pa, opo va dulike kuje, nopo jo va dulafane vo vene. - Kalunga okua tuma Omona uaje mounjuni, opo ou te mu itavele, a hupifue - Omasakramenti aeshe neindilo lomuene, ei

OUNJUNI TAU TONGO SHIKE

aishe omahongelo a Kristus. - Kristus a jandja eengono kovahongua vaje no kongerki jaje ijapuki, ngashi e i japula efiku a jadifa ovahongua vaje nOmepo Ijapuki. Kristus okua udaneka nokutja ota kala pamue novahongua vaje nongerki jaje fijo ehulilo lounjuni. Kristus okua lombuela ovahongua vaje: „Indeni nounjuti aushe, mu ka ninge ovañu aveshe ovahongua vange, ndele ne va hongeni okudiinina aishe ei nde i mu lombuela.” - Ovahongua va Kristus, venja votete na aveshe ve va shikula, ova udifa eendjovo da Kalunga mu Europa aishe. Ovatiliane eshi ve uja mu Afrika, ove ja tava udifa vo tava hongo ovalaule eendjovo da Kalunga neindilo lOmuene uetu. Ovatiliane ava ove tu hongu Kalunga kashili omunamuenjo. - Kalunga oje umue aeke. Osho jo Omona ou a tumine nounjuni umue aeke. Kristus eshi a li kombada jedu, pefimbo olo okua li ashike ku na ongerki jimue ajike. - Paife eengerki kombada jedu odi li ko dihapudihapu. (Omuleshi uetu ohe di tengeneke kutja di dule pefeke, ndele ne mu Union amuke omu nomatumo e lili noku lili e fike p'78 noimanga jovalaule i dule 1,000.) - Eshi omolua shike sho hano?”

Enjamukulo: Omatumbulo oo tue a shangulula apa, aeshe e li mondjila. Ehalo la Kristus olo tu olo, ongerki jaje i kale imue aike, ngashi okue i ilikanena: „Tate omujapuki, va diinina medina loje, eli ua pa nge, va kale vamue aveke, ngashi ove Tate mu ame na ame mu ove, ndele vo va kale mu fje, ounjuni u itavele, nokutja ove ua tuma nge.” Johannes 17:11 20,21. Jesus okua tja jo: „Opo ne keshe tu omuñu ote shi dimbulukua, nokutja nje ovahongua vange, ngenge mu nohoole mokati keni.” Johannes 13:35. Omolua shike hano paife pe netopoko linene pokati keengerki neengerki? Omolu oulundu u ovañu u nomolu oshilonga shomutondi satana, ou e na alushe ehala lokupiaaneka eongalo la Kalunga.

Epulo: Mbela Kalunga okua hafela ngaho eengerki odo dihapu ngaha?

Enjamukulo: Ahoue, Kalunga ine shi hafela nande. Omakondjifafano ovaitaveli vaje ohae mu njikifa oluhodi shili.

Epulo: Ngenge Kalunga eengerki dimue ine di hafela, mbela etimba otali ka peua oljelje? Otali ka peua onakuitavela ongerki joipupulu ile otali ka peua onakutota ongerki joipupulu?

Enjamukulo: Unene onakutota ongerki joipupulu oku netimba. Onakuitavela oku na jo etimba, ngenge oku shi shi kutja oipupulu. nde te i itavele. Shapu ngenge ine shi shiiva, nena etimba olomupukifi uaje.

Epulo: Mbela Kalunga ota ka pangula ovañu moluetimba li he fi laje?

Enjamukulo: Ahoue, Kalunga „je omujuki meendjila daje adishe, oku noñenda moilonga jaje aishe.” Epsalmi 145:17. „Heno, Omuene Kalunga omupangeli uaasbishe. o matokolo aje a juka.” Ehololo 16: 7.

Epulo: Eengerki odo adishe mbela odi na ngaho Kristus?

Enjamukulo Apeshe opo evangeli la Kristus hali udifua la jela nomasakramenti majapuki haa jandjua paufu laje, opo

Elidilululo lomona uelenga.

Omona uelenga umue mu Spanja, edina lelenga Artajo okua ningi omukriste omukuavevangeli momafiku aa. Paife oje omukuaneongalo ueongalo likuavevangeli mu Madrid, oshilando shepangelo lohilongo osho.

„Tu ameneni ku Alkohol!”

Omufitaongalo umue uomu Kamerun edina laje Bahoken okua hokolola moshiongalele shimue shomu Kopenhagen kutja ovafransa tava tumu ku Kamerun omavinu mahapumahapu novañu tava landa omavinu oo.

Pastor Bahoken okua ti: „Ovañu vomu Afrika otava ningua ngashika ovaindiani vomu Amerika va ningua, ovaspanja eshi va nangala edu olo, ve va pa oikoluifa.” (Ovaindiani va shundulua nova dipaua koikoluifa). Okua ti jo: “Fje otu li po tua njengua okulipopila, onge otu li po hatu ilikana, ovakriste vomu Europa ve tu kuafe oku tu popila.”

„Ha oikoluifa vali!”

Omupresidente omuene ua Verenigde State van Amerika, Eisenhower okua tokola kutja oivilo aisheishe noiongalele aisheishe ojo hai ningua mongulu jovakuluñu voshilongo („Mongulu itoka”) i noku-kala i he na vali oikoluifa nande.

Omupresidente Eisenhower okwa dimbulula ñumbi oikoluifa ja ninga oshiponga moshilongo shaje, onge a jandja ondaka i li ngaha. Taku diladilua kutja oshihopaelua eshi shiiva otashi ka lundulula eengedi doivilo nodoiongalele moshilongo osho shaje.

Oovene voilongo va ninga ovalidiliki.

Moshifo shimue shoshienglisa „Sunday Dispatch” omu noñgundana tai ti: ovakuluñu nomalenga oilongo e fike 24 ova tokola kutja itava pitika nande oikoluifa i kale moivilo ile moiongalele ojo hai uilikua kuvo. Ngashika ohamba jomu Sweden nomukesari uomu Japan, omukuluñu ua India, Nehru, nosho jo omukuluñu uomu Holland

pe neongalo la shili nopo pe na jo Kristus muene. Ongerki keshe nai konakonue hano moimima ei ivali: meudifo levangeli nomejakulo lomasakramenti.

Epulo: Omolua shike ongerki keshe oi na oveta jajo ja dikua po kovañu vo vene noñgedi jajo omu ovaitaveli vajo ve na okuindila nokufimaneka Kalunga kavo?

Enjamukulo: Mehepaululo leitavelo la totua ku Augsburg omudo 1530 ohamu tiua:

„Eshi osha uanena oukumue uashili uongerki jovakriste, ngenge mujo hamu udifua evangeli meudafano pandunge da jela no hamu jandjua omasakramenti pahapu da Kalunga. Hano omolu oukumue uashili uonger-Etsikilo kep. eti 8.

e li mongudu ojo. Omupresidente Eisenhower okwa tumbulua nale nokuli.

Onaini eehamba nomalenga etu taa tokola jo ngaha?

Oshiponga sholuvadi.

Moshitukulua sha Gibeon oufikulu ueti 12 la Februarie oluvadi lua denga momuti mofalama imue popepi na Gibeon. Momuti ou mua hangika etemba lomusamane umue nomukulukadi uaje navo jo va li mo va kofa. Omua li jo eedi noikombo i fike 100. Oluvadi eshi lua denga, oikombo ivali ashike ja jaluluka po. Eedi noikombo ikua oja kala ashike ja footela inai linjenga nande. Eshi pua pita okafimbo oimuna ihapu jomujo ja penduka po ngoo, ndele oimuna 40 ja fja.

Omusamane jo nomukulukadi uaje ava va hangika metemba ova fila po oshipupulu, ndele inava mona oshinga shasha. Momuti mua hangika jo eehuhua ndele inadi mona nande oshiponga shasha.

Omupresidente (omuene uoshilongo) uomu Liberia omukriste omupenda.

Omupresidente uomu Liberia oje omupenda, noje oshinimbu shi nomuenjo shomongerki imue onguaevangeli. He okua li omuudifi uomongerki ojo. Omona ou okua shikula eemadi dahe noupenda nota kuafa oshilonga shongerki.

Ovahongi ovakwalutheri.

Paife omuvalu uovahongi ovakualutheri ovo va longo moiuana jovapaani ove li po ve fike 3,400. Oshanganotumo oku li po 63 oo e va tuma.

Oshilonga sha Kanada osha tumu ovahongi vahapu ve li 1,478.

Oshilonga sha Norvegia sha tumu ovahongi ve fike 518

Ovahongi va dja mu Verenigde State van Amerika.

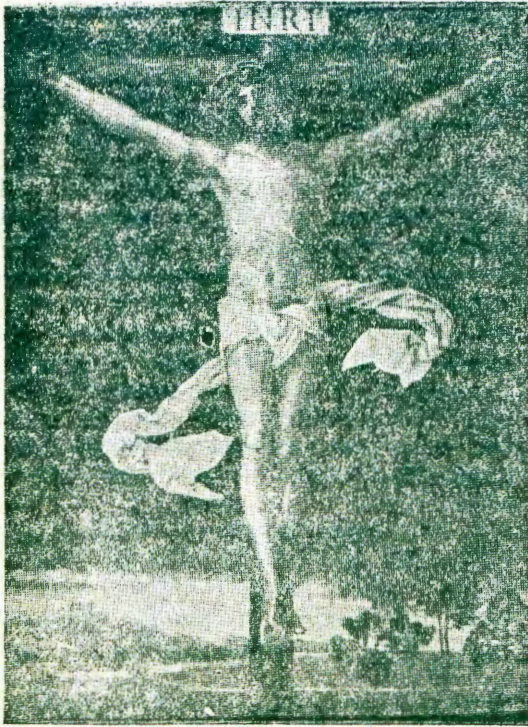
Omudo 1655 moilongo jovapaani mua li mu novahongi ovo va dja mu Verenigde State van Amerika ve fike 11,289, ndele paife omuvalu uave ua hapupala, ove fike 23,432. Ovahongi ovo otava longo mu India Japan, Afrika nomu Suid-Amerika jo.

Mu Verenigde State van Amerika omukuanegongalo konjala keshe oha jandje £1 keshe omudo koshilonga shetumo.

Ovakriste vomu Japan tava hovele oshilonga shetumo.

Momafiku aa mu Japan omua totua Ehanganotumo lotete lovakriste ovaJapani tali ka longa moilongo jokokule (Japan Overseas Evangelistic Mission). Ehanganotumo lovajapani, eli lipe, ola tuma nokuli omuhongi umue ku Birma noli li pokulongekida okutuma ovahongi vahapu nokuli ku Brasilia, Formos, Korea, Filipin noku Suid-Asia.

Oshikololo shaagundjuka.



"SHIKA NDE SHI KU NINGILE. WA NINGILE NDJE SHIKE?"

Mu Engeland omukadhona gwontumba a mono wo naale efano ndika to li mono mpaka. Omukadhona oye Franses Haver-galin. (a sa 1879.) Esiku limwe Franses okwe ya okutalelape omusitagongalo, oshoka a li a vulwa komwenyo. A dhiladhila pamwe ta mono ekwatho. Manga a kuutumba moshinyanga a lengalenga a tale shoka shi li mondjugo a mono efano ndika tali holola Yesu a aalelwa komushigakano. Kofi yefano okwa li kwa njoolwa: "Shika nde shi ku ningile. Owa ningile ndje shike?" Omatumbulo ge mu popitha nosho wo efano lyolyene. Omadhiladhilo ge ga tameke okuenda noye sho e ga tula melandulathano, opwa totwa eimbilo ndika:

1. *Onde ku tilile
Ombinzi ndi ka se,
Ngaj' nde ku kulile,
Ongo' uaa jonuke.
Onde ku igandjele,
- Oshik' ua pele ndje?*
2. *Egumb' euanaua
Megulu lja li mo,
Onda li ndi li na
Nonde li cigi po.
Moloj' ndi hepekue.
To hepekelua ndje?*
3. *Kombanda jevi ndi
Okui nda jangele.
Nda ningi Omukulili,
Ngaj, ndi ku hupice.
Onde ku endele.
Ho endele olje?*
4. *Nda sile eso ndjo,
Ljaa shi ku tumbulua.
U mon' ekulilo.
Nda li nde ehamekua.*

*Onde ku konajele.
Ho kondjele olje?*

5. *Ongoj' omuhoolike,
Ku ngoje nde ja po.
Ondi ku jambeke
Ombil' ekulilo.
Ajihe nde ku pe.
Oshik' ua pele ndje?*

6. *Omuenjo mu jambela,
Oonkondo doje uo.
OJesus longela
Osig' ehulilo.
Uujuni laleka.
Pu Jesus cigala.*

Mel. H. L. & V. 314.

Iitya ya totwa omumvo 1858. Franses sho a mana oku yi nyoola, e yi tala e ta dhiladhila: "Omikweyo ndhino shila kadhi shi uutewo. Nokuli itandi ke dhi nyoolulula kombapila ombwanawa. Shi vule ngele tandi dhi uumbile momulilo."

Nokwe shi ningi wo, ihe manga ombapila inayi hwama, okwe yi akula mo momulilo. Konima a yi okutalela po omukulukadhi gumwe omuhepele ngoka a kala megumbo lyoohepele. Oyo ya kundathana Yesu, no Franses okwe mu leshele ooverse ndhoka e dhi nyoola. Omukulukadhi e dhi hokwa noonkondo nopo mpoka Franses okwa mono omukamo nokwa gandja okatewo ke komunyanyangidhi. Mokupita kwomimvo ka lundululilwa momalaka ogendji, ka tseyika konyala mevi kehe ekriste. Ihe edina lyomutoti gwewi itali tseyika.

Ngoye omugundjuka, Omukulili gwoye e ku sile. Ue mu ningile shike? Ue mu yambela omwenyo gwoye noonkondo dhoje? Ua tokola oku mu longela? Uuyuni we u laleke u kale pu Yesu?

A.H.

EHOKOLOLO LYOMWAALUDHI A SIMANA.

(Sir James Simpson.)

Manga nda li okamatyona, onda mono sha shoka inandi wapa oku shi dimbwa po - omulumentu a mangelwa ketemba nokwa kokololwa momapandaanda goshilando montaneho yayehe. Ombunda ye ya li ya dhe-gwa nayi. Ogwo ogwa li omukalo omudhigu gwegeelo. Omolwomayono ogendji? Awe, omolweyono limwe alike. Opu na gumwe mooyakwawo a pula a geelwe pamwe naye? Awe, ngoka a yone, oye awike e nokuhumbata egeelo lye. Olyo olya li egeelo lyokuyona ompango yaantu hayi lunduluka. Olwo lwa li nokuli lwahuginina, ompango ndjoka sho ye etele omuntu egeelo lya tya ngaaka.

Sho nda li moskola yokombanda, onda mono oshinima oshikwawo shoka itashi zi mo momadhiladhilo gandje - omupangulwa ngoka e nekudhipagwa. Omaako ge ga li ga mangwa. Oshipala she sha pemba noonkondo. Aantu omayovi ye mu tananekela omeho, sho a holoka pomweelo gwondjedhililo. Ope na tuu gumwe a tokola, a se

peha lye? Ope na tuu gumwe gwomookuume ke i iile e mu mangulule nokwa lombwele, a mangwe peha lye? Awe, oye awike e nokupangulwa. Omolwoondjo odhindji? Awe, omolwoondjo yimwe ayike. Oye okwa yaka iimaliwa yomoposa. Na huka kwa li okuyona ompango yaantu hayi lunduluka, oshoka lwahuginina uufuthi womoposa we etele omuntu egeelo lyokusa.

Natango onda mono oshinima itaashi dimbiwa. Ngame mwene, omulunde nda li nda thikama kolungenge lwolumbogo lweyonuko, nda thingwa sigo omekaño lyaaluhe. Omolwoondjo yimwe ayike? Awe, omolwoondjo odhindjidhindji, sho nda yone ompango ya Kalunga ndjoka ihaayi lunduluka. Ihe onda tala nonda mono Yesu Kristus, nkene a yi peha lyandje, a futu oondjo dhandje nokugeelwa kwe. Oye a sile komushigakano, opondi ye mesimano lyaaluhe. Oye a hepekelwa uulunde wandje, opo a fale ndje kuhe megulu. okwa kulila ndje metulomutima lyompango. Oshoka ongame nda yono nonda li ndi nokugeelwa kwaaluhelube.

Ompango ya Kalunga otayi pula uuyuki wa gwanenena, mboka ngame inandi u tseyi nandonando. Onda tala ishewe nonda mono, Kristus oye uuyuki u udhilila kwayehe mboka ye mu itaala.

Ompango otayi pula uuyogoki womwenyo waa noonyata, ihe ongame onda nyatekwa koondjo. Onda tala ku nguka e tu hoole nokwe tu yogo oondjo dhetu onombinzi ye.

Onda li omuna gwa satana, omuna gwehingo. Ihe ayehe mboka ye mu itaala, okwe ya pe oonkondo, ya ninge aana ya Kalunga. Ina ninga ashike omupeha lyandje, ihe omuye nda mono egwanico lyoompumbwe dhandje adhihe.

Onda halelela oku mu hokololela Omumangululi ngu, oshoka kaku na edhina lilwe kombanda yevi moka tu nokuhupithilwa mo.

Opo mpoka pe nohoole: ha mpoka tse sho twa li tu hoole Kalunga, aawe, oye okwa li e tu hoole nokwa tumu Omuwana, a ninge ofuto yoondjo dhetu." 1 Joh. 4:10.

(Elundululo.)

(Christelike Lektuur-Verspreidersbond Postbus 2114, Kaapstad, 1955.)

ETSEYITHILO.

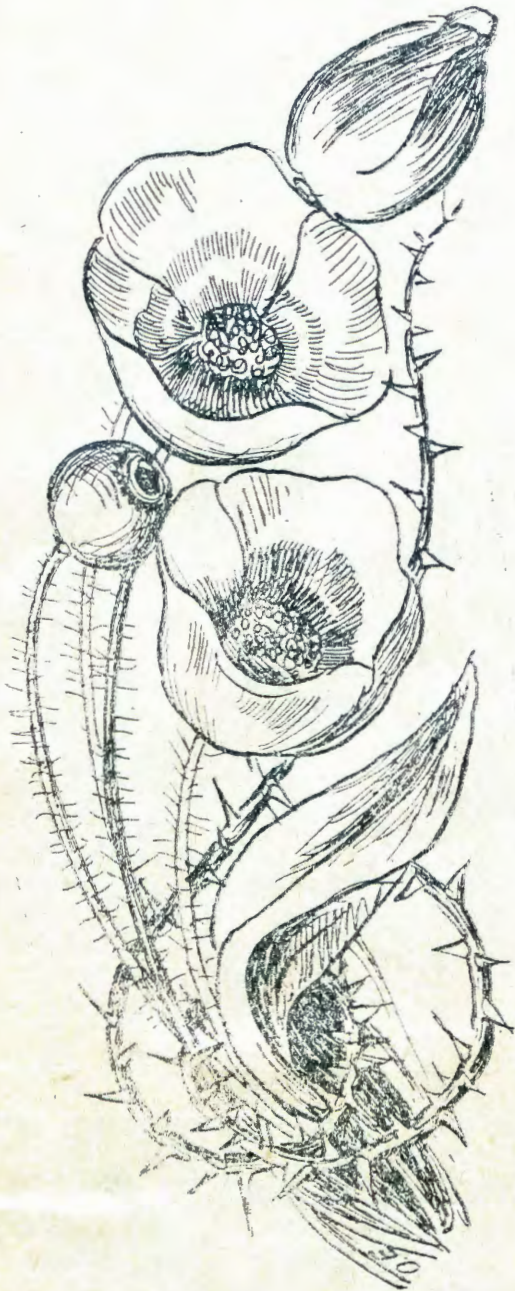
Ethigathano lyomatotwahokololo inali nyanyudha unene Oshikololo Shaagundjuka. Opwa holoka omahokololo gamwegamwe, ihe inapa monika ngoka ga gwana okupetha aatoti ondjambi nenge ga gwana okunya-nyangidhwa.

Shika inashi ku tyololokitha ongoye omugundjuka, aawe. Nashi ku tule mematuko enene, u ka hakane oshishani shesindano, Omuwa e shi uuvanekele mboka ye mu hoole.

Leshi Fil.3:14.

OSHIKOLOLO SHOMEGUMBO

UUVU TAU TAANDELE.



*Omuwa Kalunga ne mu pe ethimbo lya
Passa ewanawa li neyambeko!*

Uuvu tau taandelithwa kiinima yi ili noyi ili. Ngashi omavu ge li po ogendji, osho uo niitaandelithitho yago oyo oyindji. Uunene uuvu nenge oombuto dhuuvu ohadhi indjipala unene tuu mpoka pe na aantu oyendji.

Omatumbulo ngaka nda hala okuhokolola ombinga yimwe nde yi mono kepondoka lyokOndjondjo. Aamati aawambo oye na ehala limwe 'aiike mpoka haa gongala okutegelela omutete opoya mone oholo yokuya kUu-shimba. Otse atuhe otwa tseya nawa epondoka ndika, notwa mono nkene aamati yokiilongo niilongo yagongalele ko. Pulakena ano ngele ongoye gumwe gwaamboka haa kala mo.

Aamati aanandunge yokepondoka ya aaneke iinguma yawo pomutenja noye yi pupula wo ontsi, manga aamati mboka inaa tonatela oombakiteli oya pupulile iinguma yawo mokati kooyakwawo onkene oontsi dha lambele iinima niinguma yooyakwawo nosho iikulya mbyoka inayai sjikilwa yu uudha wo oondoya noontsi. Omukalo gwa tya ngaka nagwo tagu taandelitha oombuto dhuuvu mbala.

Tala ihe pethimbo lyothinge oombuto dhuuvu tadhi endelele mbala okutaandela. Omolwa shike mbela? Ethimbo ndika olyo shili ewanawa nolyoombuto dhuuvu wo. Oshiponga oshinene osho shika, omvula sho ya loko nevi alihe olyu uudha omeya no lya tuta. Aamati ya tameke ihe okuiyoga medhiya ndika li li kuuzilo na yamwe mboka aananyalo nenge aasuunye oyi iyogo muulambo mbuka wa kundukidha epondoka. Ano oyendji oyo ya kalele uulambo mboka manga aashona ya yi kedhiya. Tala ko ihe, ano mokalambo kamwe otamu iyogo aamati yatano oshita nenge yahamano oshita. Gumwe ota kulula oombenzi, gumwe oti ipushu mokana, gumwe omoshipala na gumwe okoompadhi. Tala ihe kuume, koondoya adhihe dhi thike mpoka mokalambo ke thike ando pokayo. Natango omeya omo tuu ge li, taku zi natango yamwe, nayo wo oye na ehala okuiyoga naa naa ngashika mbeyaka yotango, ano konyala taa ningi omalufu ogendji konyala aamati 30 mesiku tayi iyogo mokalambo kamwe akeke. Ongula natango omeya ngele omo ge li, osho tuu taa ningi ongehela. Dhihadihila ihe omeya ngoka kutya oge li ngiini ngashingeyi. Inaga ndoyala mbela? Ano omolwokuaatseya uukalinawa aantu otaa kwatwa mbala koombuto dhuuvu. Konima yomasiku, yoomwedhi, yoomvula oto dhimbulula nawa nkene eho nenge oshilyo shoye shimwe shaa li nawa. Ano tashi ti pombinga mpoka opwa kwatwa kombuto yontumba yuuvu wongandi. Ano ombuto ya tya ngaka ito yi dhimbulula pethimbo ndyoka no ito yi mono nomeho goye, oshoka oyo okanima okashonalela shili.

Ha pepondoka lyOndjondjo apeke tapu monika ando iinima mbika, awe, nomomagumbo wo getu na shaa mpoka pena aantu oyendji oombuto dhuuvu tau gongalambala.

Natu ikotokeleni tse tu kwathe wo omalutu getu nogooyakwetu.

T Namandje



OOMBUTO DHOMAVU.

Kape na ngiika nando omuwambo gumwe ngoka ina tseya ombuto nkene yi li, noshilonga shayo nkene sha tja. Oombuto hatu dhi kunu momapya getu, odho oombwanawa, oombuto dhiilya. Ohadhi hogololwa noondunge ondhoka dhi nomitse dha kola nawa, opo dhi wape kueta omimeno dha kola nawa omvula nge ya loko.

Mpaka tandi landulitha wo ehokololo ndyoka tali hokolola nkene ku na wo oombuto oombwinayi odho oombuto dhomavu hadhi dhipaga aantu.

Oombuto dhomavu odho oonshonashona ku vulu ku dhi mona nande nomeho goye gokomutse. Oombuto ndhoka dha hepeke aantu oyendji shili muwehame wi ili no wi ili. Unene tuu maawambo oyo ya hepekwa koombuto dhika omolu okuhatseya sha. Mowambo mwa fa naanaa mwa ndhindhilikwa nkene ezimo lyongandi li na omukithi gwalyo ngoka hagu li aantu mezimo ndyoka. Osha zi peni ano? Ndi shi ohekulu tuu Ngandi ngoka sho a adhika komukithi omwinayi, mokuhungwa kwe aanezimo lye sho oyo inaa kotokela ombuto konima yeso lya hekulu nenge lya yina taa kwatwa kuuvu mbuka.

Natu tye oombuto odho dhi nomwenyo nenge ongini ano? Eno oombuto odho dhi nomwenyo shili, no hadhi ipalutha mombinzi yoye ano nge ya yi mo.

Ombuto ngele ohayi li no hayi paluka mombinzi yomuntu, oshike ano tashi ka longwa komeho maandjeni okombuto tu ndjoka joondoka sho, ya mana po onkondo mombinzi yanakusa gwaandjeni? . . .

Opo ano tu kale twa gamenwa komalutu getu, tu yakuleni aavu yetu nuudhiginini pamwe nuuyogoki okulya nokunwa nokulala kwomuvu gwetu naku ikalele. Oothithiya dhoombuto odho oomue, oondhi, iiyagaya megumbo ekowe lyoye ngele lya nyata moka ngoye ho ende mo noompadhi dhowala. Jagaya ano egumboli kale lya yela nawa. Mokutungu egumbo lyoye nali kale hali mono oonte dhetango. Pupula ontsi miinguma yoye. Oonyata dhiimuna pooha dhegumbo dhi komba po oshoka omdho oondhi tadhi mono eha lyokutaandelitha oombuto, sho hadhi valele mo.

Eeno, ooyakwetu, tu uveni ano epukululo ndika opo tu vule okuigamenena omalutu getu koombuto dhomavu. Unene sho tatu ki igamena wo oomwenyo dhetu kookuume aawinayi taa hala kupukitha oomwenyo dhetu nomikalo dhawo omiwinayi.

Nomakundo gombili, kuume keni

Severus Kamati

Okahac

AALESHI TAA NYOLA

KAANYOLI YOMAMBO.

Maawambo omwa holoka nokuli mbo-ka ye nehalo lyokunyolela ooyakwawo omambo nenge uumbo. Omasiku hamale omuntu a tya ngaaka a pula ndje a ti:

Ngele omuntu ndi na iityatumbulo nda hala oku yi tuma koshinyanyangidho, nda hala, yi tungwe okambo, otashi vulika tuu? Nenge otaku pumbiwa ofuto ya gwama okunyanyangidhitha okambo?"

Oshinima shotango osho okutuma iinyolwa ya tya ngaaka kungame opo ndi yi tale, nkene ya tya. Ngele tse kombinga yetumo tatu yi panda nawa notwa hala oku yi nyanyangidhitha medhina lyetumo, nena omunyoli ita pumbwa okufuta sha. Esiku limue ota futwa nokuli, sho kwa longo oshilonga oshiwana.

Ngele embo itali vulu okunyanyangidhithwa ketumo lyetu, nomutoti a hala, e li fute ye mwene, nena e noku li tuma kiinyanyangidho yokUushimba.

Elias J. Pentti, Onajena.

OMAPULO

ki jovakriste inaku pumbiwa, eengedi delo- ngelokalunga, odo da ufua kovañu, di diini- nue akushe da fafana."

Ovakuluñu veengerki ova ufa eemango neengedi, opo meongalo keshe mu kale eshikulafano la jela moimima aische. „Osheshi Kalunga je ke shi Kalunga kedundakano, ndelene kombili." 1 Kor. 14:33. Opa shangajo; „Dulikeni kovahongo veni, mu va ude, osheshi vo otava diinine omienjo deni, ngashi vo ve noku di pulua, vo ve shi ninge nehafu, ve he shi kemene, osheshi eshi itashi mu kuafele sha." Heb. 13:17.

Ame muene onda ilikana luhapu pamue novakriste vomeengerki di lili na di lili, ndelene eengedi davo di lili na dili inadi njona oukumue uetu meitavelo nomohoole.

Epulo: Ondi udite, omuñu ueitavelo longerki joñumba nenge ta tale mukuao ueitavelo jongadi, oku uete eitavelo la mukuao kali fi eli loshili. Eshi omolua shike sho hano?

Enjamukulo: Mokuendafana novaitaveli vomeengerki di lili inatu kala nokupangulafana. Lesha Mateus 7:1-5 nosho jo Kovaroma 14:10-13. Ndelene tu kale ovajuki mohooole, ndele mu aische tu ninge neefongo mu Kristus, oje omutue." Ef. 4:15. Hano osha uapala nga, tu pukululafane, ndelene otu noku shi ninga nokudiinina oshili nohoole oshita.

Epulo: Hano ongerki ei jashili ja Kristus oi lipipo meengerki edi adishe?

Enjamukulo: Kolutu eengerki da ninga dihapu shili, „ndelene ohote ja Kalunga ja pama ndele tai kal'ofika ndele i nondaka ei: Omuene ota dimbulukua ovamuaje." 2 Tim. 2:19. Kalunga ota ka ongela ovamuaje meengerki dihapu, „ndele otapa ningi oshiunda shimue nomufita umue." Joh. 10:16.

Paife keshe umue ne litokolele naua ongerki jaje, ojo ja diinina naua eendjovo da Kalunga nomasakramenti aje, je ne i diinine pa eendjovo edi:

OSHIPONGA KONJAANJA.

Esiku 1 lya Maart 1957 mOshiyagaya mO- nyaanya mwa kana omunona Auni Albin. Okwa ya komakambamba yo na yina ya ka unde oondjuhwa. Sho ya mana, omunona okwa laleke yina a ye koskola. „Ota- ndi yi koskola, meme." "Inda u ka pitule chema yoye" yina a ti. Omunona a yi, nani a puka kegumbo. - Aantu ya tameke oku mu konga esiku tuu ndyoka, ihe ina- ye mu mona sigo ya manga oombago ya ka konge omunona. Esiku eti 4 lya Maart aasamane yaali taa ende taa kongo sigo pe- dhiya moka mwa sile okanona. Oya aadha a mona iihuna momeya, a sa naale, esiku tuu a kana.

Osho ngeyi Omuwa Kalunga te tu dbi- mbulutha okusa kwetu. „Ano kaleni mwa tonata, oshoka kamu shi shi esiku nethi- mbe Omuwa gweni te ya."

Yuuso Katangolo.

„Ndele ove kala muashi ue shi lihonga, ndele ua pamekua musho, osheshi u shi ou e ku longa. Ndele eshi oto shiiva omisha- ngua dijapuki okudja mounona uoje, odo di neefongo, di ku pe eendunge dehupifo meitavelo olo li li mu Kristus Jesus." 2 Tim. 3:14,15.

Lesha jo naua eendjovo di li momu- kanda uotete ua Johannes 4:1-3.

Omatumbulo amue omuleshi ou otu nokushuna muo moshifo sha April.

E. J. P.

OONKUNDANA DHOKUORANJE- MUND.

Erastus Josef Uubvley Oranjemund, ote tu tseyithile kutya mu Oranjemund mwa shashwa aalumentu 17 no mwa kolekwa aalumentu 23. Aauambo otaa nyanyukwa unene sho taa yakulwa komuhongi gwoku Luderitzbucht, F. Kuhlmann. Aniwa aawa- mbo ayehe ya dhiginine nawa, inaa faula. Otatu ya halele wo eyambeko lya Kalunga.

Oonkundana dokuOtjiwarongo

Megalikano enene lyongerki omu na omatumbulo omanene omusita kehe te ga tumbula, ogo ngano: Kalunga, tu gamena keso lyombadhilila no lyomuitekikalunga, eso lyaanetegameno, eso lyoluhepo, eso lyaanelaago.

Esiku eti 2 lya Maart 1957 mOtjiwa- rongo, uusiku tuu mbu wokupendukila eti 3 lya Maart omugundjuka gumwe gwaawa- mbo yomehalakano, Pinehas Kankono ka Haluendo, Ohalushu, okwa si eso lyomba- dhilila. Omutenya oku uhala molukanda ta nu oshikaliva.

Omuwameme mehalakano, okunwa kwa fa kwekondombolo tali ipwikike etiti, e tali sile mo.

Kotoka ano waa se eso lyombadhilila, eso lyoluhepo. „Uusiku mbuyaka Belsassar, omukwaniilwa gwaakaldi, okwa dhipagwa."

Dan. 5:30. Uusiku tuu mbuka manga ya kolwa eso lyombadhilila lye ya. Onkolui ita thigulula oshilongo sha Kalunga.

Evangelis Werner Amuaalua



Tu li mondjila tu ka kongele OMUKWETU aaleshi aape. Gumwe gwomutse a hala okuninga omusindani gwomethigathano lyaanaskola.